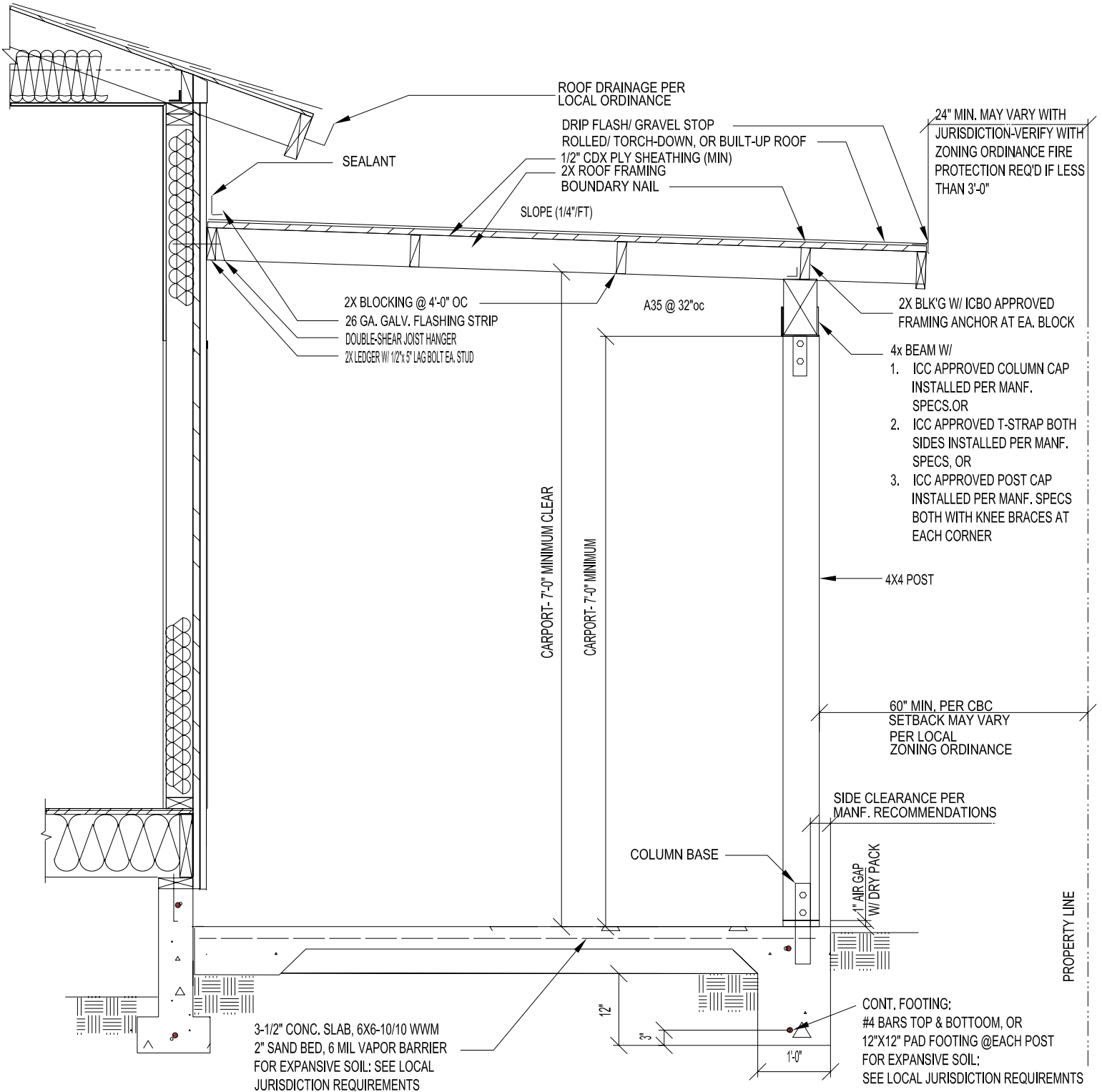
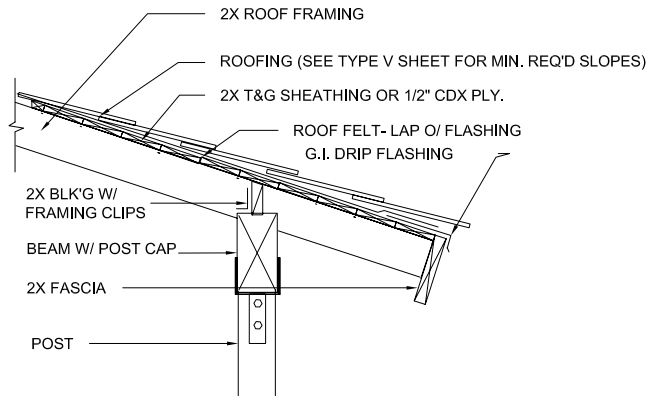


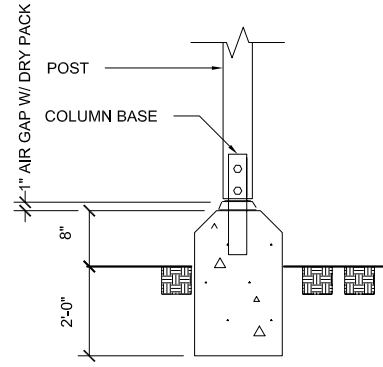
# 2008 LOS ANGELES BUILDING CODE CARPORT

TYPE V CONSTRUCTION- WOOD FRAME RESIDENTIAL BUILDINGS  
(LACBC CHAPTER 23, SECTION 2308) ONE-STORY CONSTRUCTION

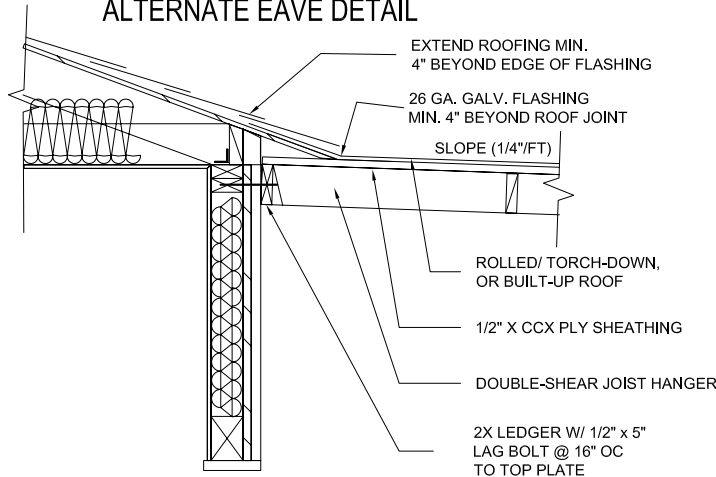




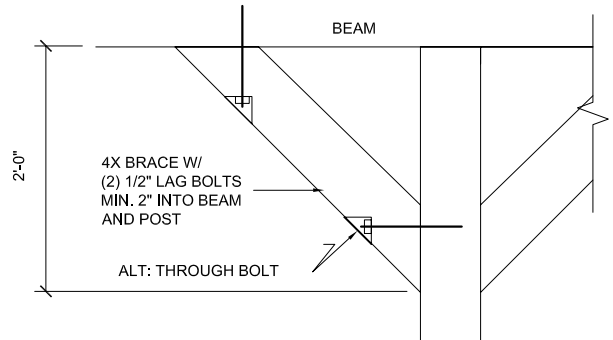
ALTERNATE EAVE DETAIL



ALTERNATE FOOTING DETAIL



ALTERNATE CONNECTION DETAIL



KNEE BRACE DETAIL

ALLOWABLE SPANS FOR DF #1 HEADERS					
Maximum span of tributary load 20'-0"					
SPAN	BEAM SIZE				
Up to 4'-0"	4x4				
4'-1" to 6'-0"	4x6				
6'-1" to 8'-0"	4x8				
8'-1" to 10'-10"	4x10				
10'-0" to 12'-0"	4x12				
ALLOWABLE SPANS FOR DR #2 ROOF RAFTERS		ALLOWABLE SPANS FOR DR #2 CEILING JOISTS			
Light Dead Load (up to 15 psf)/ Max. Roofing Load: 6 psf (Asphalt Shingles)		Dead Load 5 psf/ Live Load 10 psf			
Live Load: 20 psf					
RAFTER SIZE	SPACING	ALLOWABLE SPAN	JOIST SIZE	SPACING	ALLOWABLE SPAN
2X6	24"	10'-10"	2x4	24"	9'-10"
	16"	13'-3"		16"	11'-13"
	12"	14'-11"		12"	12'-5"
2X8	24"	13'-0"	2x6	24"	14'-10"
	16"	16'-11"		16"	17'-8"
	12"	15'-6"		12"	19'-6"
2X10	24"	16'-11"	2x8	24"	18'-9"
	16"	20'-9"		16"	23'-0"
	12"	23'-11"		12"	25'-8"
2X12	24"	19'-7"	2x10	24"	22'-11"
	16"	24'-0"		16"	26'-0"
	12"	25'-0"		12"	26'-0"

TYPE V CONSTRUCTION IS A CLASSIFICATION OF BUILDINGS BY CONSTRUCTION MATERIALS AND METHODS. IT IS THE LEAST RESTRICTIVE PERMITTED BY THE LA COUNTY BUILDING CODE AND INCLUDES LIGHT, WOOD-FRAME CONSTRUCTION. THIS SHEET IS FOR INFORMATION AND REFERENCE ONLY AND IS NOT A SUBSTITUTE FOR ACCURATE DRAWINGS PREPARED FOR PROPOSED CONSTRUCTION PROJECT.