

GENERAL CONSTRUCTION NOTES

1. BEFORE STARTING ANY WORK ON THIS PROJECT, THE CONTRACTOR SHALL:
 - A) HAVE SUBMITTED IN SEPTUPLIET A WRITTEN LISTING OF ALL MATERIAL ITEMS TO BE FURNISHED TO AND/OR INSTALLED ON THE PROJECT, TO THE ENGINEER AND POSSESS A RETURNED COPY OF SUCH MARKED "APPROVED" FOR THIS PROJECT BY THE ENGINEER.
 - B) HAVE SUBMITTED TO THE ENGINEER PROOF THAT THE AGENCY IS NAMED INSURED BY THE CONTRACTOR'S INSURERS IN ACCORDANCE WITH THE GENERAL PROVISIONS OF THE SPECIFICATIONS.
 - C) HAVE GIVEN THE ENGINEER THE TELEPHONE NUMBER, BUSINESS OR HOME ADDRESS AND MAILING ADDRESS AND NAMES OF THE PERSONS WHO CAN BE CONTACTED IN THE EVENT OF AN EMERGENCY OCCURRENCE ON THE PROJECT DURING THE TIME THE WORK IS IN PROGRESS, 24 HOURS PER DAY, 7 DAYS PER WEEK.
 - D) HAVE GIVEN THE ENGINEER 2 DAYS IN ADVANCE OF START OF WORK, NOTICE, IN WRITING, OF THE TIME OF START OF WORK.
2. IT IS RECOMMENDED THAT THE DEVELOPER CHECK THIS PLAN WITH HIS PLANS BEFORE COMMENCING CONSTRUCTION OF THE WATER SYSTEM. THE WATER DISTRIBUTION SYSTEM PLAN FOR THIS PROJECT WAS PREPARED BY THE DEVELOPER'S ENGINEER. THE ACCURACY OF THE LOCATION OR THE EXISTENCE OR NONEXISTENCE OF ANY UTILITY PIPE OR STRUCTURE WITHIN THE LIMITS OF THIS PROJECT SHOWN ON THESE PLANS DOES NOT CONSTITUTE A GUARANTEE AS TO THEIR LOCATION BY THE AGENCY. NEW PAVING, CURBS, AND SIDEWALKS INDICATED ON THESE DRAWINGS ARE SHOWN FOR INFORMATION ONLY. THE CONTRACTOR FOR THE WATER SYSTEM SHOULD VERIFY THE LOCATION AND THE PROPOSED SCHEDULING OF THE NEW PAVING, ETC., WORK BEFORE HE PROCEEDS.
3. ALL WATER SYSTEM MATERIALS AND CONSTRUCTION METHODS SHALL COMPLY WITH THE REQUIREMENTS OF THE DISTRICT THESE PLANS AND THIS LIST OF MATERIALS HAVE BEEN DETAILED FOR USE OF DUCTILE IRON, CEMENT MORTAR LINED FITTINGS AND APPURTENANCES OR STEEL CEMENT MORTAR LINED AND COATED APPURTENANCES AS SHOWN. THE CONTRACTOR'S MATERIAL LISTING APPROVED BY THE ENGINEER SHALL BE IN THE CONTRACTOR'S POSSESSION PRIOR TO HIS PURCHASE OR FABRICATION OF SUCH MATERIALS. DUCTILE IRON FITTINGS SHALL BE MINIMUM PRESSURE RATED 350 P.S.I., STEEL FITTINGS SHALL BE MINIMUM SCHEDULE 40S. FITTINGS SHALL BE DESIGNED FOR A MINIMUM WORKING PRESSURE OF 200 P.S.I. CONTRACTOR SHALL APPLY TWO COATS OF HEAVY DUTY RED PRIMER AND TWO FINISH COATS OF PAINT TO FIRE HYDRANTS AND FLUSHOUTS, AS SPECIFIED IN THE APPLICABLE STANDARD DRAWINGS.
4. ALL WORK IS SUBJECT TO THE REQUIREMENTS OF THE PERMIT(S) OF THE CITY OF PALMDALE REGARDING BARRICADES, TRAFFIC CONTROL, BACKFILL COMPACTION, PAVEMENT REPAIRS, ETC.
5. ALL SURVEYING SERVICES ARE TO BE FURNISHED BY THE DEVELOPER'S ENGINEER.
6. ALL 4" AND 6" DIAMETER PIPE SHALL HAVE A MINIMUM COVER OF 36". 8" AND 10" DIAMETER PIPE SHALL HAVE A MINIMUM COVER OF 42". 12" DIAMETER PIPE SHALL HAVE A MINIMUM COVER OF 48". ALL SERVICE CONNECTIONS SHALL HAVE A MINIMUM COVER OF 24" MEASURED VERTICALLY FROM TOP OF SERVICE CONNECTION TO APPROVED GUTTER SURFACE, FLOW LINE CROSSED BY THE SERVICE CONNECTION. WHERE CONSTRUCTION OF PERMANENT GUTTER SURFACES IS NOT COMPLETE OR ESTABLISHED ADJACENT TO THE WATER MAIN WORK, WATER MAINS SHALL BE CONSTRUCTED WITH THE MINIMUM REQUIRED COVER MEASURED FROM THE PROPOSED ADJACENT FLOW LINES.
7. EARTH COVER OVER TOP OF THE PIPE AT FITTING IS CONTROLLED BY LARGEST PIPE OUTLET.
8. ALL SERVICE CONNECTIONS SHALL BE INSTALLED FROM THE MAIN IN THE STREET FROM WHICH THE HOUSE IS NUMBERED AND INSTALLED AT RIGHT ANGLES TO THE WATER MAIN AND AS CLOSE AS POSSIBLE TO THE CENTER OF THE LOT BUT NO CLOSER THAN 5' TO ANY DRIVEWAY, WALKWAY, CURB RETURN, OR OTHER UTILITY UNLESS NOTED OTHERWISE ON THE PLANS. WATER METER BOXES AND SERVICE CONNECTIONS SHALL BE INSTALLED BETWEEN THE BACK OF CURB AND PROPERTY LINE PER STANDARD W-5 OR W-7, AS APPLICABLE. METERS SHALL BE INSTALLED BY THE CONTRACTOR AFTER:
 - A) AN APPLICATION FOR EACH METER HAS BEEN SUBMITTED TO THE AGENCY.
 - B) ALL APPLICABLE CHARGES HAVE BEEN PAID.
 - C) THE CONTRACTOR HAS BROUGHT THE WATER METER BOXES AND SERVICE CONNECTIONS TO FINISHED CURB AND SIDEWALK GRADE.
9. IT SHALL BE THE DEVELOPER'S DUTY TO CAUSE THE SEWER OR LATERALS TO MEET THE REQUIREMENTS OF STANDARD 2100-0 OF THE LOS ANGELES COUNTY DEPARTMENT OF PUBLIC WORKS AND WATERWORKS DISTRICT STANDARD W-50.
10. PROPOSED UTILITY INFORMATION, AND LOCATIONS SHOWN ON THIS PLAN ARE SUBJECT TO CONTRACTUAL ARRANGEMENTS WITH THE DEVELOPER. CONTRACTOR SHALL CHECK THIS INFORMATION WITH THE APPROPRIATE UTILITY COMPANY.
11. FIRE HYDRANT RISERS SHALL BE INSTALLED AS SHOWN IN THE APPLICABLE DISTRICT STANDARD DRAWINGS. ANY NECESSARY ADJUSTMENT OF FIRE HYDRANT BREAK-OFF FLANGE ELEVATION SHALL BE PERFORMED AT DEVELOPER'S EXPENSE AT TIME FINAL FINISH GRADE IS DEVELOPED.
12. ALL NEW WORK SHALL BE TESTED VALVE TO VALVE AT 200 P.S.I. FOR FOUR HOURS, UNLESS OTHERWISE SPECIFIED. PRESSURE TESTING SHALL NOT BE CONDUCTED AGAINST ANY NEW OR EXISTING VALVE THAT IS CONNECTED TO BE EQUIVALENT TO NEW MATERIAL REQUIRED FOR THIS PROJECT. DESIGN, FURNISH AND INSTALL ANY NECESSARY THRUST BLOCKS IN ACCORDANCE WITH STANDARD W-21, OR AS SHOWN ON THESE PLANS.
13. DISINFECTION: CONTRACTOR SHALL TAKE ALL MEASURES NECESSARY TO ASSURE SANITARY INSTALLATION. HE SHALL ENDEAVOR TO KEEP ALL DIRT, RODENTS, INSECTS, ETC. AWAY FROM WATERWAY SURFACES. ISOLATION VALVES SHALL BE KEPT CLOSED (EXCEPT DURING FILLING AND FLUSHING, WHEN VALVES SHALL BE OPERATED SO AS TO ASSURE FLOW TOWARD NEW DISCHARGE) AND LEFT CLOSED AT ALL OTHER TIMES UNTIL AFTER PRESSURE TEST. DISINFECTION, FLUSHING AND BACTERIAL TEST HAS BEEN PASSED. CONTRACTOR SHALL NOTIFY AGENCY AT LEAST 24 HOURS IN ADVANCE OF ANY OPERATION OF ISOLATION VALVES WHICH SHALL BE OPERATED ONLY BY AGENCY PERSONNEL. AGENCY WILL ARRANGE FOR BACTERIOLOGICAL TEST SAMPLING OF WATER MAINS UPON NOTIFICATION BY CONTRACTOR. AGENCY WILL ALSO ARRANGE FOR CONCURRENT BACTERIOLOGICAL TEST SAMPLING OF SUPPLY.
14. IF THE DEVELOPER DESIRES TEMPORARY WATER SERVICE FOR CONSTRUCTION AND TO OPERATE HOUSE PLUMBING PRIOR TO INSTALLATION OF PERMANENT WATER METER BY CONTRACTOR, THE DEVELOPER SHALL APPLY FOR INSTALLATION BY THE DISTRICT OF TEMPORARY CONSTRUCTION METER(S) OFF FIRE HYDRANTS OR FLUSHOUTS.
15. INTERCONNECTIONS: CONTRACTOR SHALL NOTIFY THE AGENCY, IN WRITING, TWO WORKING DAYS IN ADVANCE THAT HE IS PREPARED WITH ALL LABOR MATERIAL, EQUIPMENT, AND NECESSARY PRELIMINARY WORK TO MAKE THE CONNECTION. THE AGENCY WILL MARK ON THE SURFACE THE DISTRICTS EXISTING FACILITIES AND WILL PROVIDE SUPERVISION ONLY FOR CONTRACTOR TO MAKE INSTALLATION. THE CONTRACTOR SHALL EXCAVATE, INSTALL CONNECTIONS, BACKFILL AND REPAIR ANY DAMAGES AT HIS EXPENSE.
16. ANY MATERIAL SALVAGED FROM THE EXISTING WATER SYSTEM BY THE CONTRACTOR SHALL BE RETURNED BY THE CONTRACTOR TO THE AGENCY (260 E. AVENUE K-8 LANCASTER), UNLESS SUCH MATERIAL IS DETERMINED BY THE ENGINEER TO BE EQUIVALENT TO NEW MATERIAL REQUIRED FOR THIS WORK, IN WHICH CASE THE CONTRACTOR WILL BE ALLOWED TO USE SUCH EQUIVALENT SALVAGED MATERIAL IN PLACE OF NEW MATERIAL. CONTRACTOR SHALL RECOAT, REPAINT, REWORK, CLEAN AND TEST SUCH MATERIAL TO THE SATISFACTION OF THE ENGINEER BEFORE INSTALLING SAME.
17. PIPE LENGTHS IN ENGINEER'S "ESTIMATED" QUANTITIES WERE CALCULATED ON A HORIZONTAL OFFSET. PIPE LENGTHS ADJUSTMENT FOR JOGS, SLOPES, VALVES, AND FITTINGS HAS NOT BEEN MADE.
18. CONTRACTOR SHALL MAKE ARRANGEMENTS TO ADJUST VALVE BOXES, FIRE HYDRANT BREAK-OFF FLANGES, METER BOXES, VAULTS, ETC. TO SUBDIVISION FINISH GRADE AT TIMES WHEN FINISH GRADES ARE ESTABLISHED BY OTHERS AT NO COST TO AGENCY.
19. CONTRACTOR SHALL NOT UNREASONABLY RESTRICT THE USE OF PUBLIC RIGHT-OF-WAY OR ACCESS TO ADJACENT PREMISES.
20. UPON REQUEST, AGENCY WILL FURNISH DRILLED BOLTS FOR FIRE HYDRANT AND/OR FLUSHOUT BREAK-OFF FLANGES AS NEEDED.
21. IN ADDITION TO ITEMS IN LIST OF MATERIALS, CONTRACTOR SHALL FURNISH ALL NECESSARY ADAPTORS, COUPLINGS, BOLTS, GASKETS, CAULKING MATERIALS, AND REPAIRING MATERIALS AS REQUIRED TO COMPLETE THE WORK.
22. BEFORE BACKFILLING TRENCH, ALL EXPOSED UNDERGROUND METAL SURFACES, UNLESS NOTED OTHERWISE OR SPECIFIED ELSEWHERE IN THE PLANS AND SPECIFICATIONS, SHALL BE COATED WITH A 2-INCH MINIMUM THICKNESS OF 1,000 LB. CEMENT MORTAR. [THREE (3) PARTS SAND TO ONE (1) PART PORTLAND CEMENT TO ONE (1) PART LIME.]
23. CLEARANCE: (EXCEPT SEWERS, SEE NOTE 9) UNLESS NOTED OTHERWISE IN THE PLANS AND SPECIFICATIONS, IT SHALL BE THE DEVELOPER'S DUTY TO ARRANGE ALL OTHER EXISTING OR PROPOSED PROJECT IMPROVEMENTS INCLUDING ALL UNDERGROUND STRUCTURES AND UTILITY LINES TO PROPERLY CLEAR WATER PIPE AS SPECIFIED BELOW
 - (A) HORIZONTAL : 24 - INCHES OUTSIDE - TO - OUTSIDE
 - (B) VERTICAL : 12 - INCHES OUTSIDE - TO - OUTSIDE
24. THE CONTRACTOR IS TO NOTIFY THE AGENCY, TELEPHONE (661) 940-5456 EXTENSION 223, AT LEAST TWO (2) WORKING DAYS BEFORE STARTING ANY WORK ON THIS PROJECT.
25. THE CONTRACTOR SHALL VERIFY THE SIZE, TYPE, CLASS, PROTECTIVE LINING AND COATING, AND DEPTH OF THE EXISTING WATER MAIN AND SHALL BE RESPONSIBLE FOR MAKING THE PROPER CONNECTIONS.
26. THE DEVELOPER MUST PROCEED WITH, AND COMPLETE, THE REQUIRED WATER SYSTEM IMPROVEMENTS WITHIN ONE YEAR OF THE DATE OF THE DISTRICT APPROVAL OF THE PLANS. AFTER THE 12 - MONTH PERIOD, THE DISTRICT REQUIREMENTS ARE SUBJECT TO CHANGE.
27. METERED WATER SERVICE CONNECTIONS MAY ONLY BE INSTALLED AFTER RECEIPT AND PROCESSING OF WATER SERVICE APPLICATION BY THE AGENCY AND AGENCY THEREFOR.
28. WHERE PUBLIC FIRE HYDRANTS ARE INSTALLED OR UPGRADED, THE CONTRACTOR SHALL INSTALL A TWO-WAY BLUE REFLECTIVE RAISED PAVEMENT MARKER, ALSO COMMONLY CALLED "BLUE DOTS". REFLECTORS SHALL COMPLY AND BE INSTALLED PER SECTION 714 - "PAVEMENT MARKERS" OF THE LATEST EDITION OF THE STANDARD SPECIFICATIONS FOR PUBLIC WORKS CONSTRUCTION. ONE MARKER SHALL BE INSTALLED PERPENDICULARLY OPPOSITE EACH HYDRANT, APPROXIMATELY 6 INCHES OFFSET FROM THE CENTERLINE OF THE STREET ON THE HYDRANT SIDE OF THE STREET. (TWO MARKERS SHALL BE REQUIRED IN THE CITY OF LANCASTER).
29. THE EXISTENCE AND LOCATION OF ANY UNDERGROUND UTILITIES, PIPES AND/OR STRUCTURES SHOWN ON THESE PLANS WERE OBTAINED BY A SEARCH OF AVAILABLE RECORDS. TO THE BEST OF OUR KNOWLEDGE, THERE ARE NO EXISTING UTILITIES EXCEPT AS SHOWN ON THESE PLANS. THE CONTRACTOR SHALL ASCERTAIN THE TRUE LOCATION OF ANY UNDERGROUND UTILITIES AND SHALL BE RESPONSIBLE FOR DAMAGE TO ANY PUBLIC OR PRIVATE UTILITIES, SHOWN OR NOT SHOWN HEREON. IT IS ALSO SUGGESTED THAT THE CONTRACTOR POHOLE THE AREA PRIOR TO INSTALLATION TO MAKE SURE CONNECTIONS AND CROSSINGS CAN BE MADE ACCORDING TO PLAN. ANY CHANGES TO THE PLANS MUST BE APPROVED BY THE ENGINEER.
30. ASBESTOS CEMENT PIPE SHALL BE CUT IN ACCORDANCE WITH CAL-OSHA STANDARDS AND THE LAWS OF THE STATE OF CALIFORNIA. ABRASIVE SAWS FOR CUTTING THIS PIPE SHALL NOT BE USED. ALL ASBESTOS RESIDUE SHALL BE REMOVED FROM THE JOB SITE AND DISPOSED IN ACCORDANCE TO STATE LAW. THE CONTRACTOR WORKING WITH ASBESTOS MATERIALS MUST HAVE REGISTRATION FOR THIS WORK FROM CAL-OSHA.
31. CONTRACTOR SHALL POSSESS A VALID "A", "C-34", OR "SC-34" CONTRACTORS LICENSE.
32. A DISTRICT APPROVED BACKFLOW PREVENTION ASSEMBLY, OF THE TYPE SPECIFIED, IS REQUIRED WHEN POTENTIAL BACKFLOW HAZARDS TO THE DISTRICT'S WATER SUPPLY EXIST. THE APPROVED ASSEMBLY SHALL BE INSTALLED ABOVE GROUND DIRECTLY AFTER THE METER. NO CONNECTIONS ARE ALLOWED BETWEEN THE METER AND THE BACKFLOW ASSEMBLY. WATER SERVICE SHALL BE CONTINGENT UPON TESTING AND CERTIFICATION OF THE ASSEMBLY BY A LOS ANGELES COUNTY CERTIFIED BACKFLOW TESTER. SUBSEQUENT TO THE INITIAL CERTIFICATION, THE PROPERTY OWNER SHALL BE RESPONSIBLE FOR SUBMITTING AN ANNUAL TEST CERTIFICATION TO THE DISTRICT. ALL TESTING PROCEDURES AND CERTIFICATIONS SHALL BE CONDUCTED AT OWNER'S EXPENSE.
33. ALL BURIED PIPING, INCLUDING MAINS, HYDRANT LATERALS, FLUSHOUT LATERALS, AIR RELEASE VALVE LATERALS, AND OTHER APPURTENANCES SHALL BE INSTALLED WITH FACILITY IDENTIFICATION "WARNING TAPE" (SEE SPECIFICATIONS).

LEGEND

PROPOSED WATER MAIN	— W — W —
EXISTING WATER MAIN	— W — W —
PROPOSED SEWER AND MANHOLE	— O — S —
EXISTING SEWER AND MANHOLE	— O — S —
PROPOSED GAS LINE	— G — G —
EXISTING GAS LINE	— G — G —
STREET CENTER LINE	— C —
PROPERTY LINE	— P —
EXISTING A.C. PAVING	— PAVING —
PROPOSED SIDEWALK AND DRIVEWAY	— SIDEWALK — DRIVEWAY —
EXISTING SIDEWALK	— SIDEWALK —
FIRE HYDRANT 6" x 4" x 2 1/2" COMPLETE	— W —
GATE VALVE: FLANGED-BELL, FLANGED	— W —
TEE: ALL BELL, ALL FLANGED BELL-BELL-FLANGED	— W —
ELBOW: ALL BELL, BELL x FLANGE, ALL FLANGED	— W —
DOMESTIC SERVICE CONNECTION & WATER METER	— W —
INTERCONNECTION	— W —
MAX STATIC PRESSURE/MIN DYNAMIC PRESSURE FINISH GRADE ELEVATION	— W —
EXISTING RIGHT OF WAY LINE	— W —
FLUSHOUT ASSEMBLY: 4" x 2 1/2" COMPLETE	— W —
PROPOSED RIGHT OF WAY LINE	— W —
AIR AND VACUUM RELEASE VALVE ASSEMBLY	— W —
ADAPTORS: BELL x FLANGE, MECH JT x FLANGE	— W —
COUPLINGS: TRANSITION, FLEXIBLE FLANGED, D.I.P. TO D.I.P.	— W —

STATISTICS

NUMBER OF LOTS	2
NUMBER OF ACRES	2.54
FEET OF WATER MAIN	72
PUBLIC FIRE FLOW, G.P.M.	2250
ON-SITE FIRE FLOW, G.P.M.	0
FIRE SPRINKLER DEMAND, G.P.M.	700 (BOTH LOTS)
DURATION OF PUBLIC FIRE FLOW, HOURS	2
RESIDUAL PRESSURE, PUBLIC FIRE FLOW, P.S.I.	20
MAXIMUM STATIC PRESSURE, P.S.I.*	110
MINIMUM DYNAMIC PRESSURE, PUBLIC FIRE FLOW, P.S.I.**	78
MINIMUM DYNAMIC PRESSURE, ON-SITE FIRE FLOW, P.S.I.**	20
MINIMUM DYNAMIC PRESSURE, FIRE SPRINKLER DEMAND, P.S.I.**	20
H.W. OF PRESSURE ZONE	2696
DISTRIBUTION SHEET	K-02E

* THE MAXIMUM STATIC PRESSURE VALUE IS NORMALLY BASED ON THE OVERFLOW ELEVATION OF A GRAVITY FEED STORAGE TANK OR A DISCHARGE PRESSURE SETTING AT A PRESSURE REGULATION STATION. THIS VALUE IS TO BE USED FOR THE DESIGN OF PRESSURE CLASSES OF PIPES, VALVES, METERS, FITTINGS, ETC., EXCEPT WHERE A BOOSTER PUMPING STATION PRODUCES PRESSURES GREATER THAN THE MAXIMUM STATIC VALUE. THE GREATER PUMPING HEAD VALUE MUST THEN BE USED IN THE EVALUATION AND REVIEW.

** THE MINIMUM DYNAMIC PRESSURE VALUE IS NORMALLY BASED ON THE AVERAGE MAXIMUM DOMESTIC DEMAND OF EXISTING CUSTOMERS PLUS THAT OF THE PROPOSED PROJECT AND THE FIRE FLOW OCCURRING CONCURRENTLY. IF AN EXISTING OR PROPOSED PROJECT REQUIRES A SUBSTANTIAL FIRE FLOW WHICH IS GREATER THAN WHAT IS BEING CONSIDERED FOR THE SUBJECT PROJECT, AND WHICH MAY HAVE A SIGNIFICANT EFFECT ON THE SUBJECT PROJECT, THE EFFECT OF THE GREATER FLOW MUST THEN BE CONSIDERED IN THE EVALUATION AND REVIEW. THE MINIMUM DYNAMIC PRESSURE VALUE IS TO BE USED FOR THE HYDRAULIC COMPUTATION.

UNDERGROUND SERVICE ALERT

1-800-227-2600
TWO (2) WORKING DAYS BEFORE YOU DIG

ARTICLE 2, SECTION 4216 OF THE GOVERNMENT CODE REQUIRES A DIG ALERT IDENTIFICATION NUMBER BE ISSUED BEFORE A "PERMIT TO EXCAVATE" WILL BE VALID. FOR YOUR DIG ALERT I.D. NUMBER, CALL UNDERGROUND SERVICE ALERT AT THE NUMBER ABOVE.

REFER TO SECTION 7-10.4.1 OF THE STANDARD SPECIFICATIONS REGARDING SAFETY ORDERS

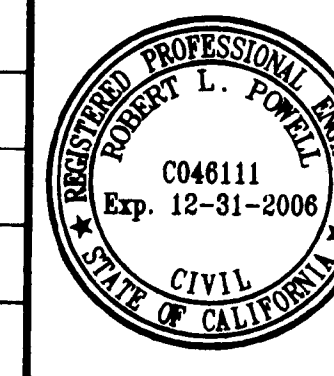
THIS DRAWING IS THE PROPERTY OF THE LOS ANGELES COUNTY WATERWORKS DISTRICTS. THE INFORMATION SHOWN HEREON IS NOT REPRESENTED OR WARRANTED TO BE COMPLETE, ACCURATE OR UP-TO-DATE. NO PERMISSION IS GRANTED FOR IT TO BE REPRODUCED OR COPIED.

NOTES

ALL PIPE LENGTHS SHOWN HEREON ARE APPROXIMATE. PIPE LENGTH ADJUSTMENTS FOR JOGS, SLOPES, VALVES, AND FITTINGS HAVE NOT BEEN MADE.

SEE LOS ANGELES COUNTY WATERWORKS DISTRICT STD DWG. W-6 FOR ADDITIONAL INFORMATION. STANDARD DWG. W-6 SUPERSEDES ALL CONFLICTS WITH THIS PLAN.

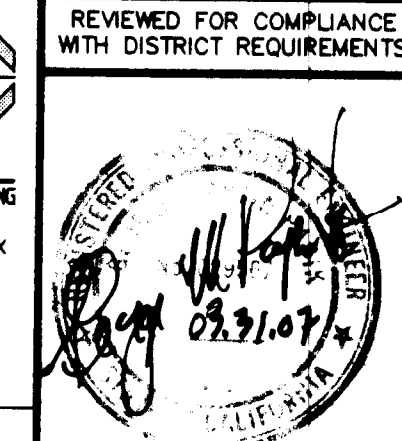
NO.	DATE	REVISION	SUBMIT BY	APP'D BY



CCL
ENGINEERING, INC.
CIVIL ENGINEERING, LAND SURVEYING, GEOTECHNICAL ENGINEERING
43434 SANHAYO STREET
LANCASTER, CA 93535
(661) 949-9500
(661) 949-8380 FAX

Robert L. Powell 6/10/05
ROBERT L. POWELL RCE 46111 DATE

CCL DWG FILE: G:\1750\Projects\Plan\1750 Water2.dwg
PLOT DATE: 08-09-06



CITY OF LANCASTER
PLANNING DEPARTMENT
APPROVAL FOR WALL COMPLIANCE

6/10/05

LOS ANGELES COUNTY
WATERWORKS DISTRICTS
DEPARTMENT OF PUBLIC WORKS
COUNTY OF LOS ANGELES

FOR DISTRICT USE ONLY PLAN CHECKER TV UNIT NO. 4228
APPROVED BY: [Signature] DATE: 6/10/05

WATERWORKS DISTRICT NO. 40
ANTELOPE VALLEY
SPEC. NO. WWD 4-1820 (PC)

DEVELOPER: CAMBRIDGE DEVELOPMENT GROUP
15725 VENTURA BLVD STE. 402
ENGLEWOOD, CA 91431
(818) 501-5030

JOB NO. Y 5045341 (PC)
INQUIRY NO. I 35733-4
DWG. NO. WWD 4-1820.1

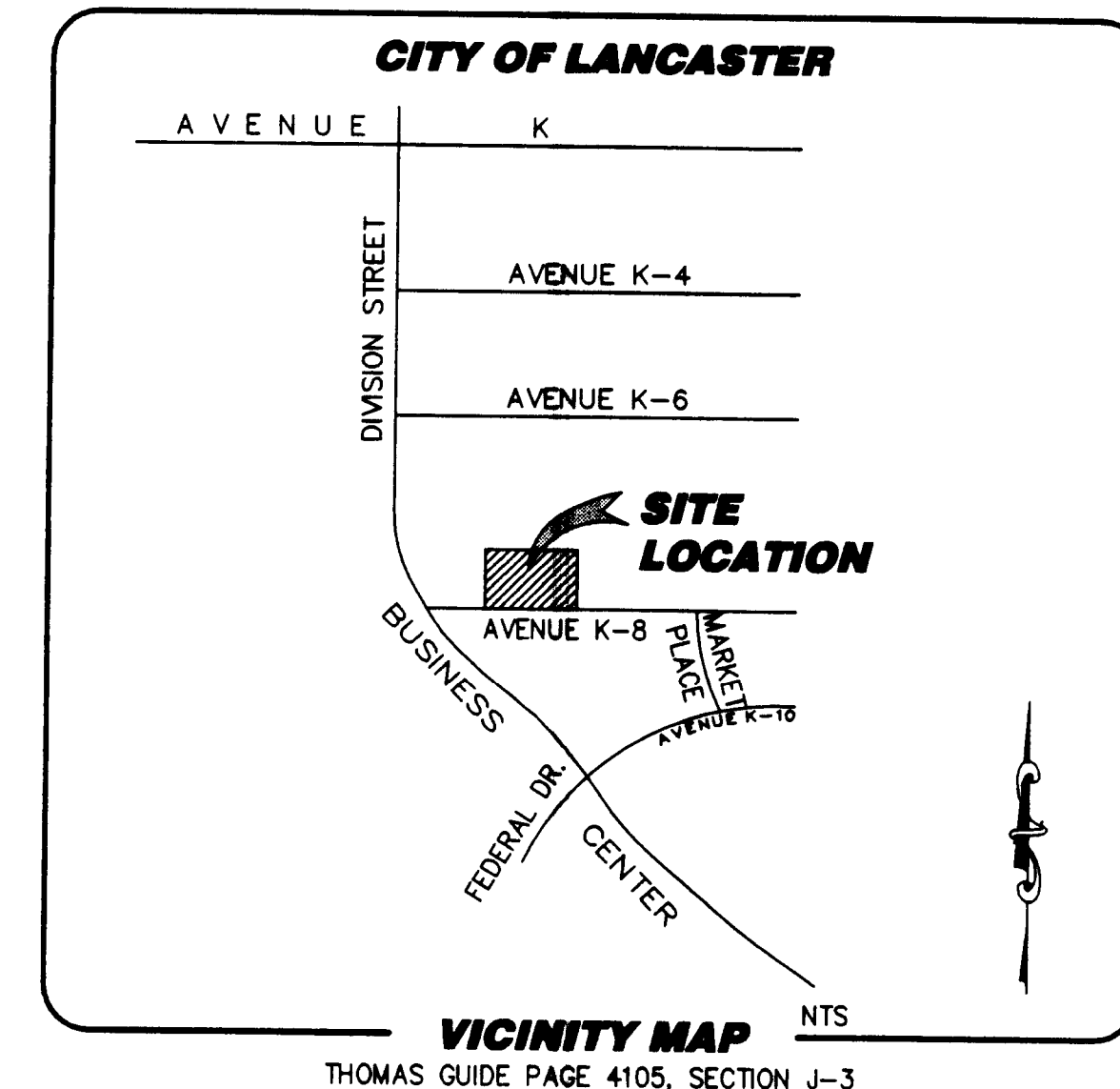
IMPROVEMENTS: WATER SYSTEM IMPROVEMENTS TO LOT 59, 60 TRACT 32548
LOCATION: 229 & 249 E. AVE K-8 LANCASTER, CALIFORNIA

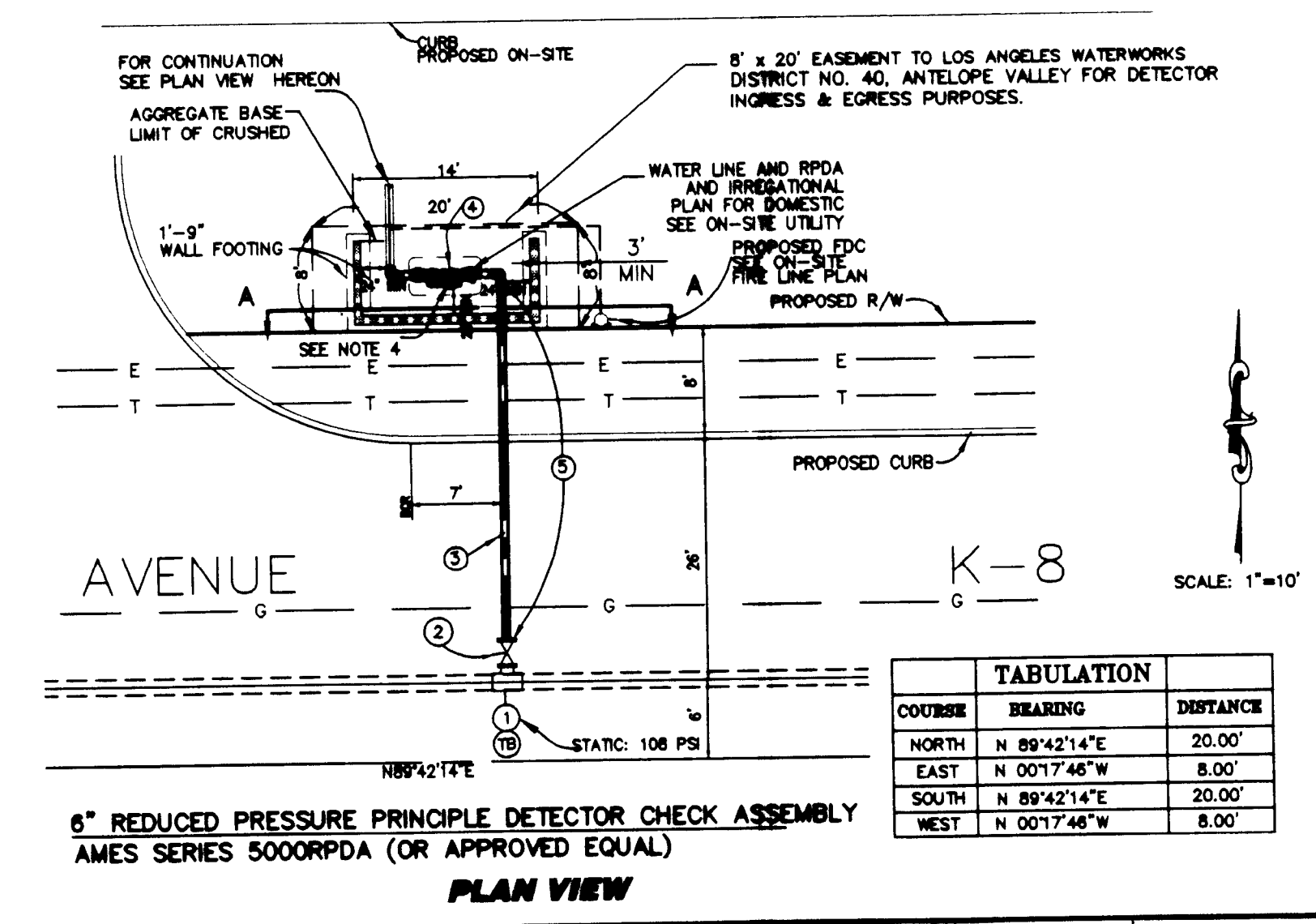
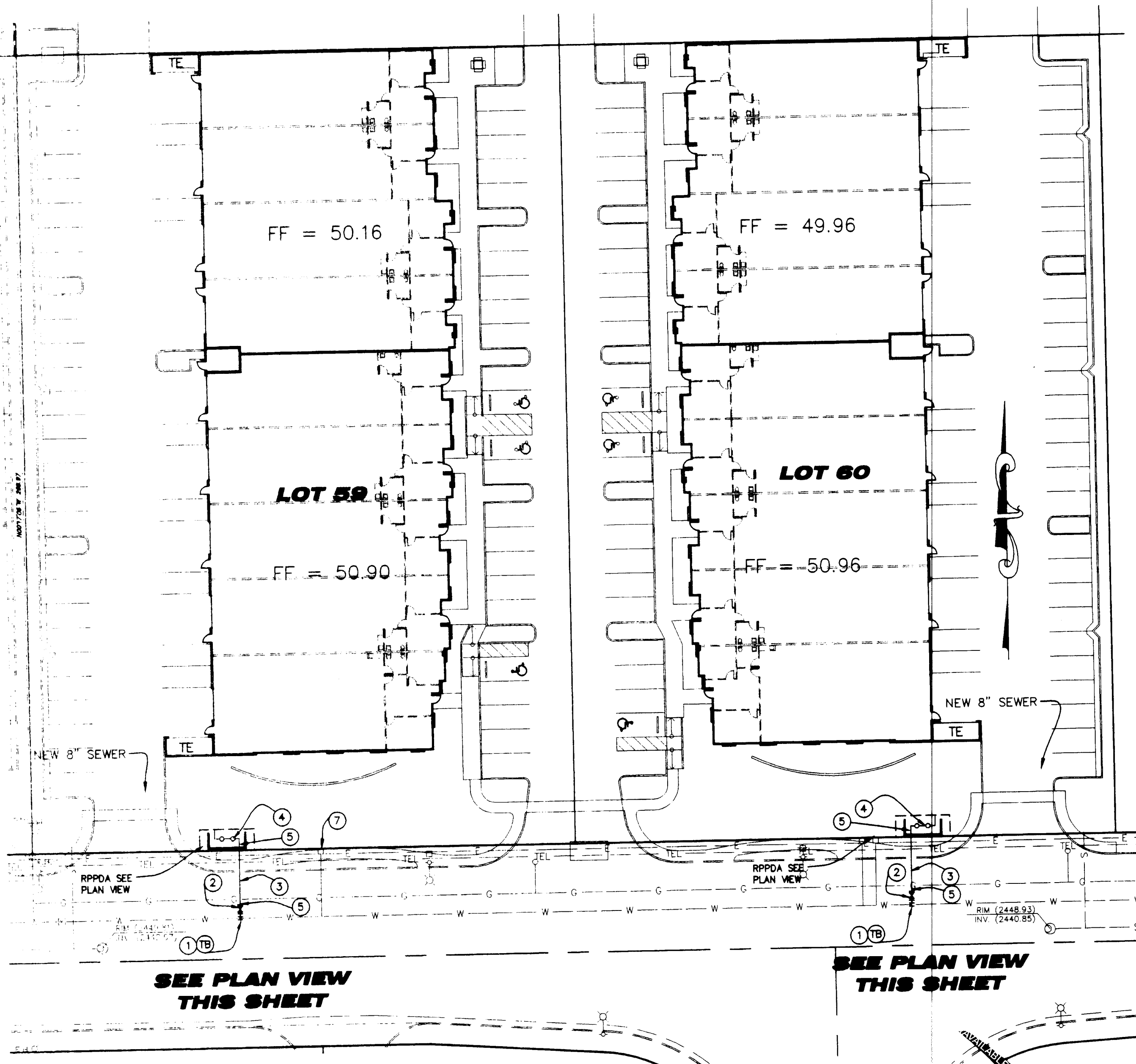
SHEET 1 OF 2 SHEETS

LIST OF MATERIALS

ITEM NO.	DESCRIPTION	ENGINEER'S "ESTIMATED" QUANTITIES		
		SHEET NUMBER	TOTAL	UNIT
1	14" x 6" TAPPING TEE, MUELLER H-615, MJ W/10" FLGD OUTLET, CL125, EPOXY LINED (OR APPROVED EQUAL)	2	2	EA
2	6" TAPPING GATE VALVE, MUELLER T-2360, FLGD, CL125, NRS, 200 PSI WWP, W/ VALVE BOX PER STD W-15 (OR APPROVED EQUAL)	2	2	EA
3	6 5/8" O.D. STEEL PIPE, 10 GA, CML & CMC	72	72	LF
4	6" REDUCED PRESSURE PRINCIPLE DETECTOR CHECK ASSEMBLY, AMES 5000RPOA OR APPROVED EQUAL (SEE GENERAL NOTES 8, 27 & 32)	2	2	EA
5	6" SLIP-ON WELD FLANGE, CL150	AS REQ'D	AS REQ'D	EA
6	BLOCK WALL ENCLOSURE	72	72	LF
7	1 1/2" METER PER LACWMD STD. DWG. W-5 CONNECTED TO EX. 2" WATER SERVICE CONNECTION (SEE NOTES 8 & 27)	2	2	EA
TB	P.C.C. THRUST BLOCK PER STD. W-21 AS REQUIRED EVEN IF NOT SHOWN	AS REQ'D	AS REQ'D	

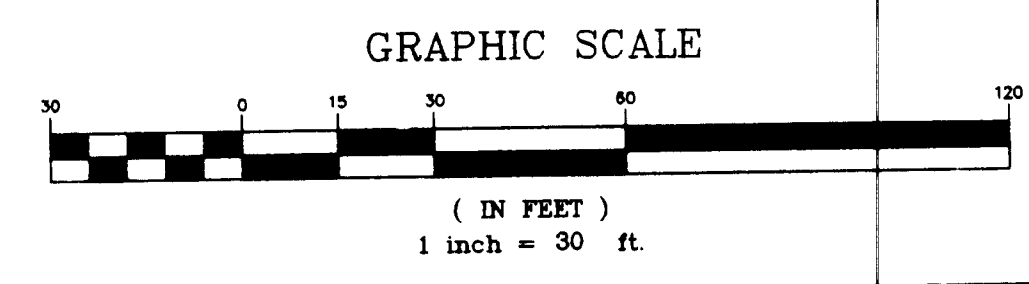
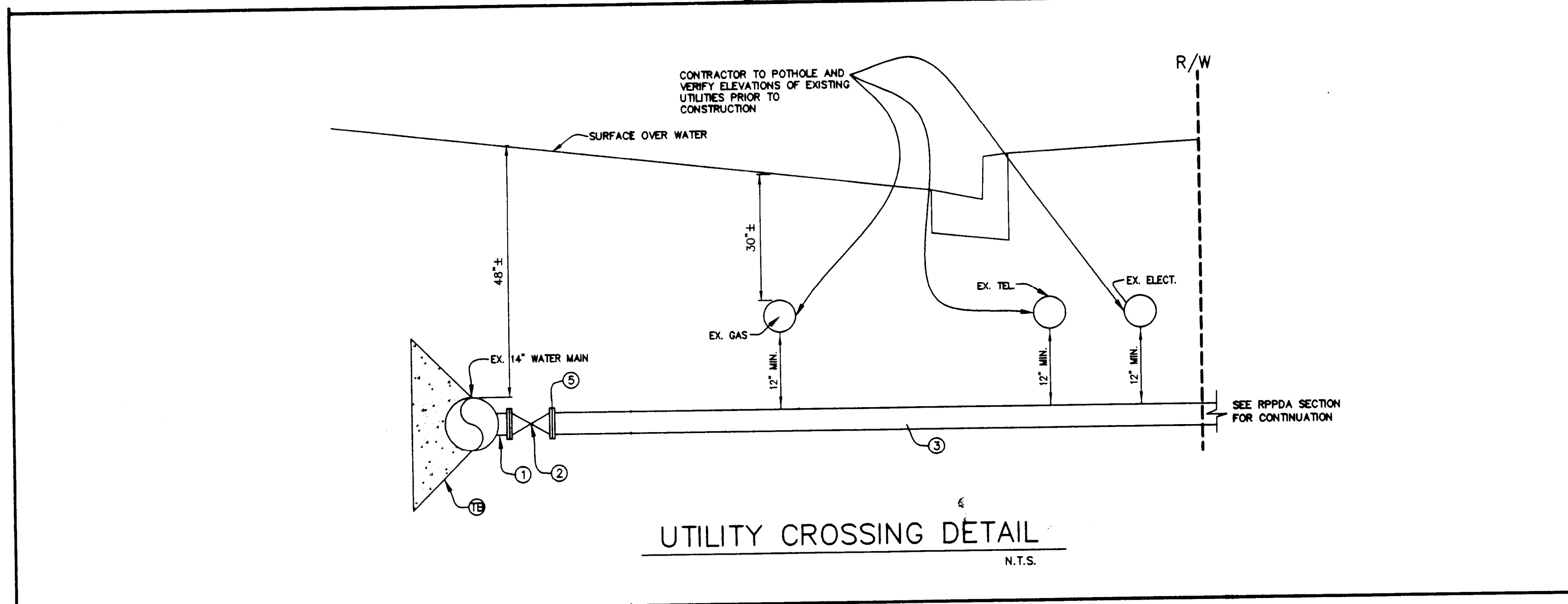
FOR ALL DOMESTIC WATER METERS WITH STATIC PRESSURE OF 80 PSI AND GREATER, PRESSURE REGULATORS ARE REQUIRED TO BE INSTALLED AND MAINTAINED BY THE OWNER/DEVELOPER ON HIS/HER SIDE OF THE WATER METER PER LOS ANGELES COUNTY PLUMBING CODE, SECTION 1007. APPLIES TO ALL LOTS HEREON.



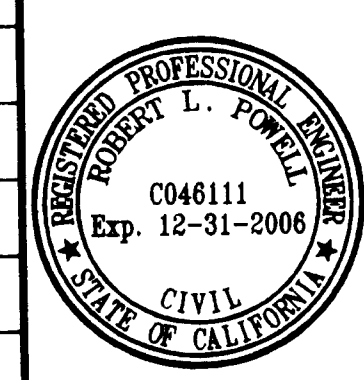


SEE PLAN VIEW THIS SHEET

SEE PLAN VIEW THIS SHEET



NO.	DATE	REVISION	SUBMT BY	APP'D BY



CCL
ENGINEERING, INC.
 CIVIL ENGINEERING, LAND SURVEYING, GEOTECHNICAL ENGINEERING
 43434 SAHAYO STREET (861) 849-9500
 LANCASTER, CA 93535 (861) 849-8380 FAX

LOS ANGELES COUNTY WATERWORKS DISTRICTS
 DEPARTMENT OF PUBLIC WORKS
 COUNTY OF LOS ANGELES

WATERWORKS DISTRICT NO. 40
 ANTELOPE VALLEY
 SPEC. NO. WWD 4-1820 (PC)

DEVELOPER: CAMBRIDGE DEVELOPMENT GROUP 15720 VENTURA BLVD STE. 402 ENGLEWOOD, CA 91431 (818) 501-5030	JOB NO. Y 5045341 (PC)
IMPROVEMENTS: WATER SYSTEM IMPROVEMENTS TO LOT 59, 60 TRACT 32548	INQUIRY NO. I 35733-4
LOCATION: 229 & 249 E. AVE K-8 LANCASTER, CALIFORNIA	DWG. NO. WWD 4-1820.1

SHEET 2 OF 2 SHEETS