

Tapping into Available Capacity in Existing Infrastructure to Create Water Supply and Water Quality Solutions

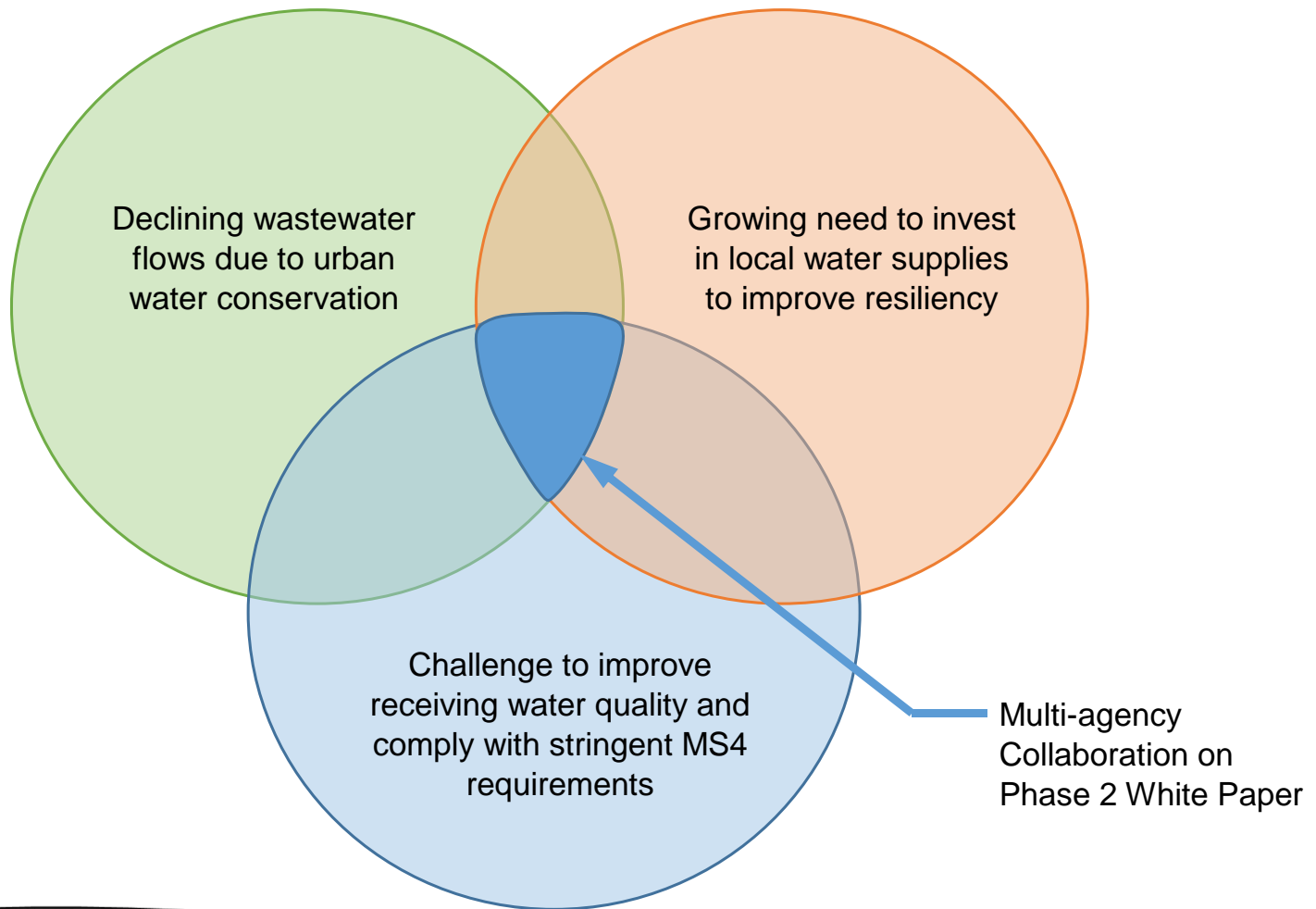
Greater Los Angeles Region
IRWMP Leadership Committee

August 28, 2019

David W. Pedersen, P.E.
General Manager

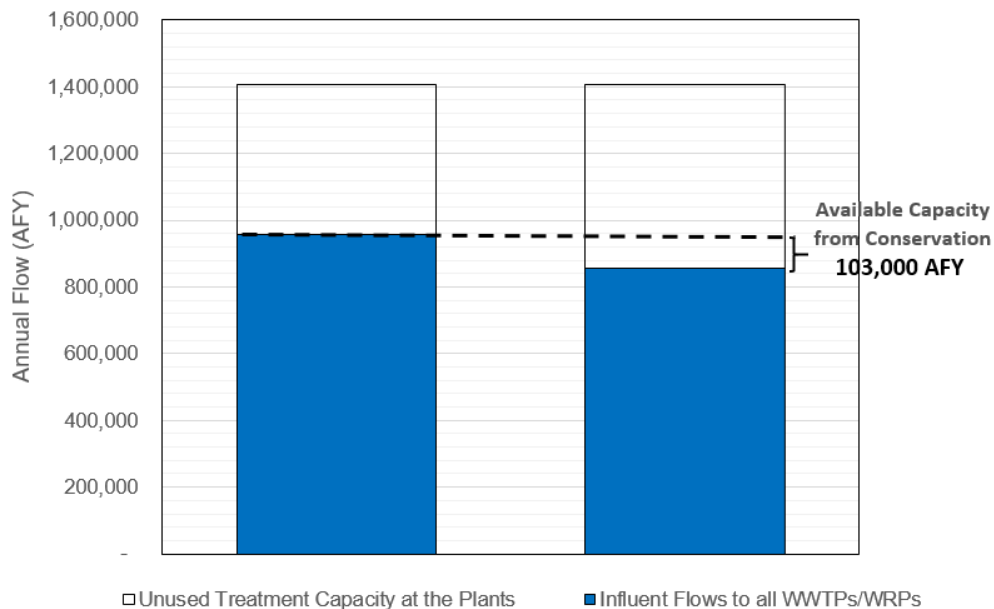


Primary Drivers for Study



Conservation and Wastewater Flows

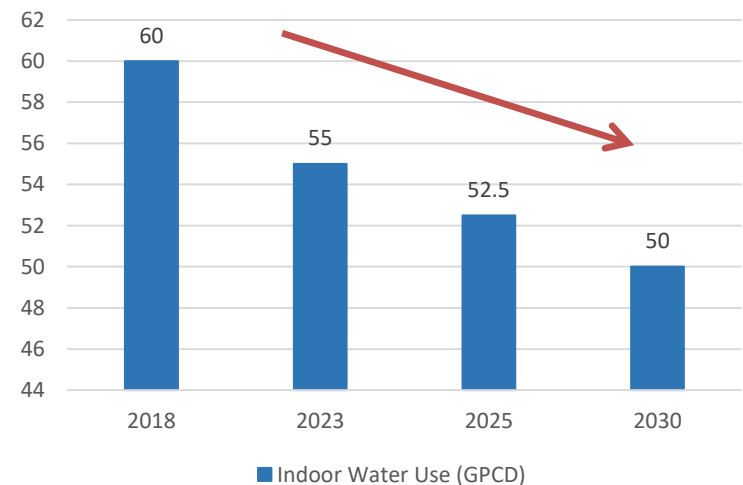
Conservation Practices Post-Drought Provide Additional Capacity to Use for Stormwater Treatment and Reuse



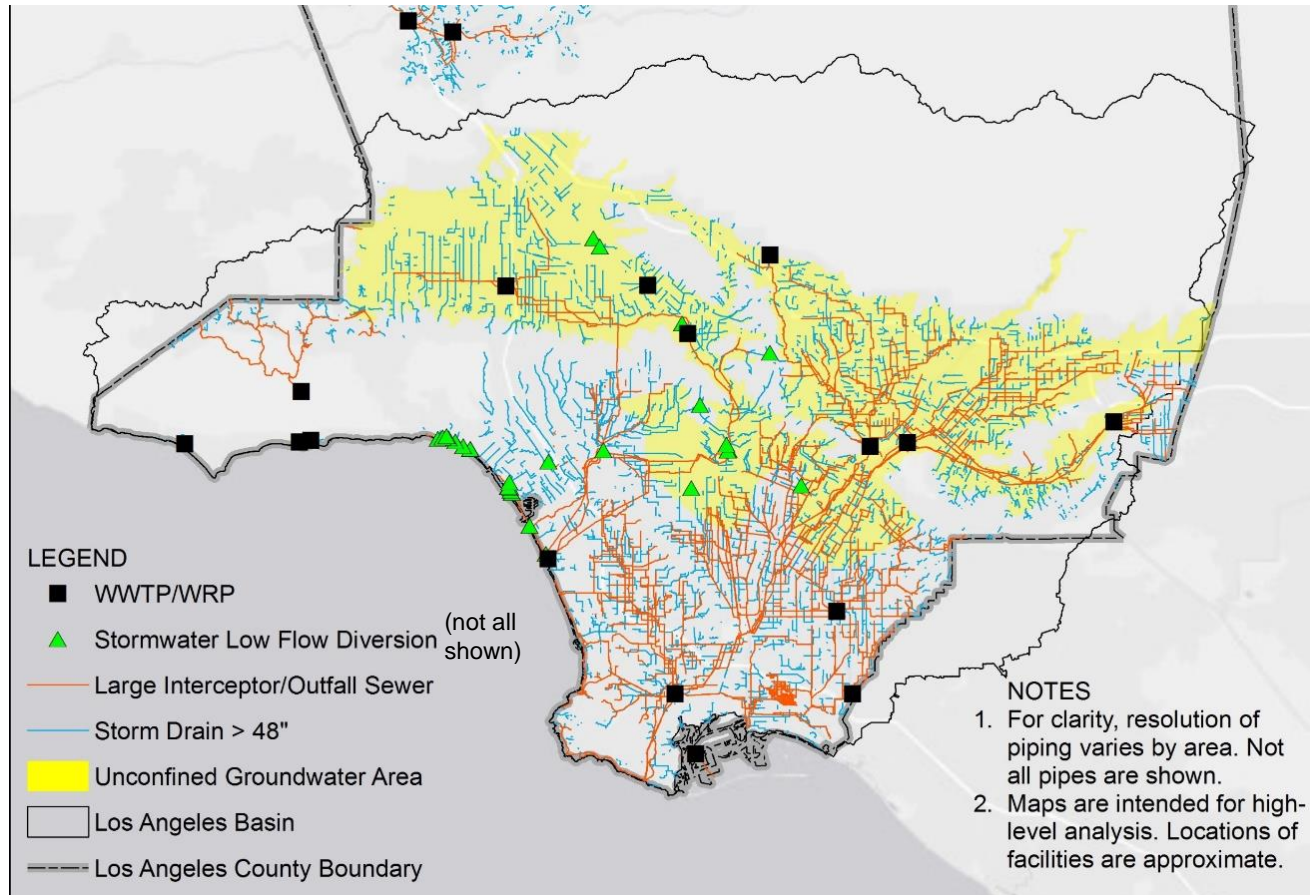
Note: Figures estimated based on preliminary analysis.

SB 606 / AB1668 – Making Conservation a California Way of Life

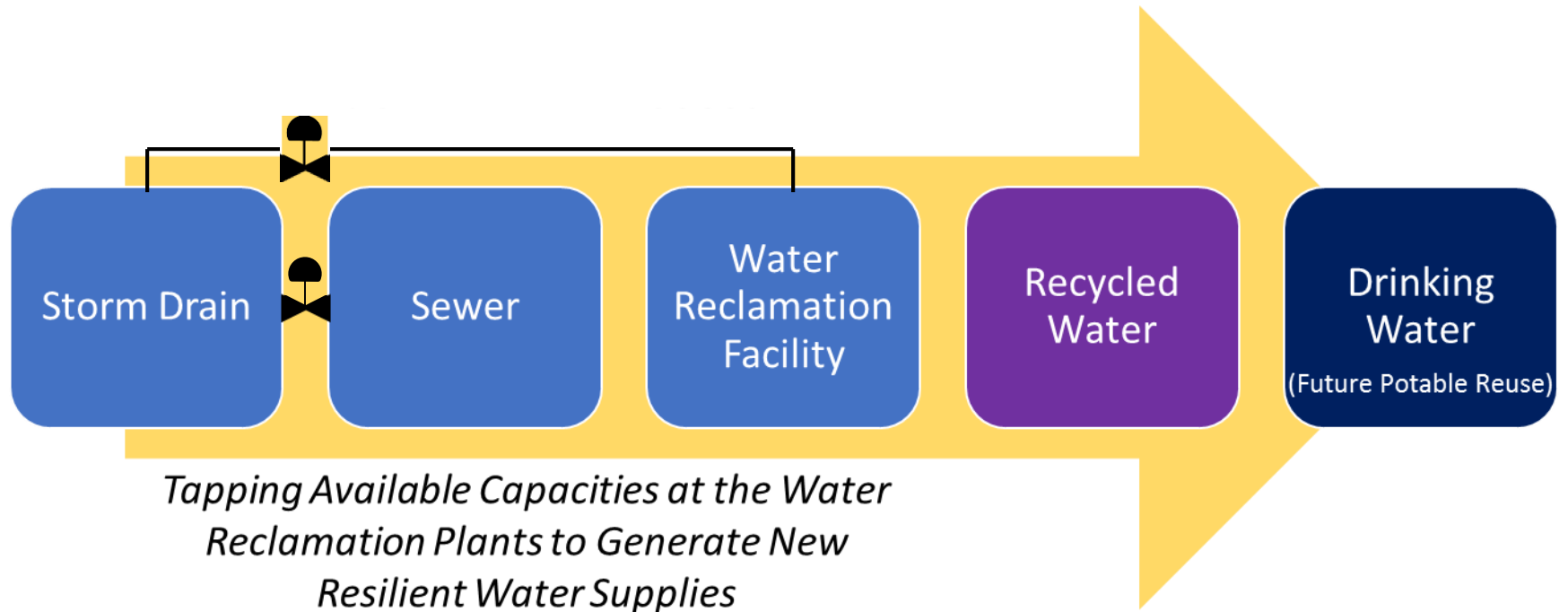
Indoor Water Use (GPCD)



Overlapping Infrastructure



The Approach



Alignment w/Existing Efforts



Phase 1 White Paper

- Completed in May 2018.
- Highlighted the merits of diverting urban runoff and first flush stormwater to the wastewater system.
- Illustrated the need for additional study:
 - To address potential challenges and complexities.
 - To engage a much broader group of stakeholders.

WHITE PAPER

PRE-RELEASE VERSION

Tapping into Available Capacity in
Existing Infrastructure to Create Water
Supply and Water Quality Solutions

Prepared for

Las Virgenes Municipal Water District
Main San Gabriel Basin Watermaster

May 2018

ch2m:

CH2M HILL Engineers, Inc.
1000 Wilshire
Suite 2100
Los Angeles, CA 90017



Purpose of Phase 2 White Paper

- Explore the opportunity for controlled and strategic integration of the region's existing stormwater and wastewater systems to achieve multiple benefits:
 - Enhance the quality of receiving waters in Los Angeles County, and
 - Increase water supplies available for recycling.
- Build upon the work initiated with Phase 1 White Paper and engage a broader group of stakeholders.
- Provide a roadmap for municipalities to pursue the strategy.



Participating Agencies

- Las Virgenes Municipal Water District
- Sanitation Districts of Los Angeles County
- Los Angeles County Department of Public Works
- Los Angeles Department of Water and Power
- LA Sanitation and Environment
- Main San Gabriel Basin Watermaster
- Water Replenishment District of Southern California
- Central Basin Municipal Water District
- Pasadena Water and Power
- Three Valleys Municipal Water District
- City of Torrance
- Upper San Gabriel Valley Municipal Water District



Conclusions

- Water and wastewater agencies are valuable partners to develop multi-benefit solutions that support MS4 compliance.
- Drought and long-term conservation have resulted in reductions to influent sewer flows, a trend that is likely to continue in the future.
- Over the next 10 years, water reuse projects are expected to more than double the current reuse flow rate.
- Permissive diversion of urban runoff and some stormwater can help to address MS4 requirements, while generating additional source water for recycling.
- Maximizing the use of existing infrastructure makes good economic sense.
- Additional study of the strategy is warranted through a Phase 2 White Paper.



Phase 2 Progress

- Phase 2 Study underway - 30% complete
- Final report expected in early 2020
- Presentation to SCCWRP on Aug. 29
- Technical Review and Steering Committees
- Roadmap for MS4 Permittees

