



## OVERVIEW

Watershed Management Division implements Public Works' mission related to the Los Angeles County Flood Control District through projects that address flood protection, water conservation, stormwater quality, and aesthetic and recreational enhancements within District right of way. Using a watershed management methodology to achieve this mission has led to the integration of ideas, resources, and funding and opened communication channels with a broad spectrum of stakeholders. As part of the Department's 2006 Strategic Plan, Public Works set a Department-wide goal of proactively meeting or exceeding environmental and water quality regulations and standards. This goal was set in recognition of the importance of the environment to the community we serve. In addition the Division has been called upon to provide guidance to Public Works in the arenas of sustainability, low-impact design, and environmental awareness.

## HIGHLIGHTS

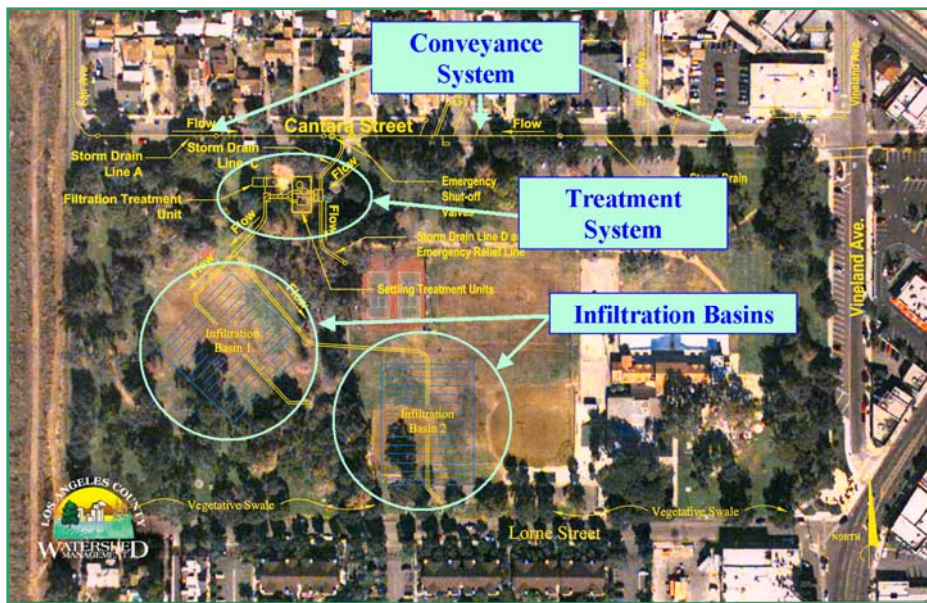
- The County and its Los Angeles River stakeholders celebrated the 10-year anniversary of the Los Angeles River Master Plan in June 2006. Since its inception, the master plan has guided implementation of more than \$115 million river projects.
- The County adopted the San Gabriel River Master Plan in December 2006. The San Gabriel River Master Plan represents more than 130 enhancement projects in a framework developed by the County, 19 cities, and various other public agencies and community organizations along the San Gabriel River.
- The Greater Los Angeles County Region adopted the Integrated Regional Water Management Plan ([lawaterplan.org](http://lawaterplan.org)) in December 2006. The IRWMP is a comprehensive document that defines issues and possible integrated solutions for the next 20 years of water supply, water quality, and water pollution issues. IRWMPs for the Upper Santa Clara River Region ([scrwaterplan.org](http://scrwaterplan.org)) and the Antelope Valley Region ([avwaterplan.org](http://avwaterplan.org)) are also being prepared by regional stakeholder groups.
- Construction is completed on the Sun Valley Park and Tuxford Green Multiuse Projects. These projects resonated with the nation's environmental and municipal communities for their innovative use of technology to achieve sustainable flood protection, water conservation, and clean water solutions.
- Bike trails, rest areas, landscaping, and interpretive signage are installed in Phase II of the Paseo del Rio at the Rio Hondo Spreading Grounds Project in Pico Rivera.



Students from Community Harvest Charter School planted native shrubs along Ballona Creek during Earth Day 2007.

- Youth in six watershed communities learned the value of environmental stewardship by participating in 10 County-sponsored Earth Day events. Earth Day activities included classroom presentations, the planting of thousands of native trees and shrubs, and the creation of numerous riverside gardens, pocket parks, rest areas, and ornamental structures designed by local artists.

—Cont'd



The Sun Valley Park Multiuse Project was hailed by Environment Now as one of the Top Achievements in the Environmental Community in Southern California in 2006. Stormwater and urban runoff in the vicinity of Sun Valley Park is now treated on site by an underground filtering and infiltration system. An estimated 10 million gallons of clean water will be returned to groundwater supplies each year to provide potable water for Angelenos.

- Rubber dams are used in the San Gabriel River to reduce the County's dependence on imported water supplies by infiltrating water through the river's soft bottom and diverting captured rainwater to local spreading grounds.
- The Antelope Valley Comprehensive Plan of Flood Control and Water Conservation was updated for the first time since the plan's 1987 adoption. The County supports the position that a regional flood control and water conservation agency would be instrumental in developing solutions to remediate the widespread flooding and water resource concerns that threaten public safety and sustainability of local water supplies in the Antelope Valley Region.
- Construction begins on the Dominguez Gap Wetlands Project. This multipurpose wetland development is a joint project of the County and City of Long Beach (DeForest Treatment Wetlands Project) that will provide habitat, water quality improvement, groundwater recharge, passive recreation, and interpretive signage in the City of Long Beach.
- Construction begins on the Marie Canyon Water Quality Improvement Project, a low-flow diversion in Malibu that will significantly reduce bacteria and other pollutants at one of the County's most chronically impacted beach outlets. The project is the result of a partnership between Public Works, the City of Malibu, and the California Department of Transportation.
- Installation of 441 catch basin trash excluder devices in cooperation with the Cities of Hermosa Beach, Inglewood, Manhattan Beach, Rancho Palos Verdes, Santa Monica, and West Hollywood.
- Participation in the North Santa Monica Bay Watersheds Task Force in the development of the North Santa Monica Bay Regional Watershed Implementation Plan. This collaboration includes cities within the watershed; the County of Ventura; and other stakeholders including public agencies, regulators, environmental groups, and homeowners.
- Development, design, and construction of more than 18 low-flow diversion systems designed to divert dry-weather urban runoff away from the ocean and into the septic sewer system for treatment.
- The 2001 National Pollutant Discharge Elimination System Municipal Separate Storm Sewer System Permit expired in December 2006; however, as the liaison between 84 municipal co-permittees and the Los Angeles Regional Water Quality Control Board, the County continues to implement existing programs until the State issues a new permit in 2008. As of June 30, 2007, 13 Total Maximum Daily Load regulations are in effect in the County of Los Angeles.

*For more information, visit [lawatersheds.org](http://lawatersheds.org) or call (626) 458-4348.*