

City Terrace Community Meeting

Cogen Landfill Permit Update

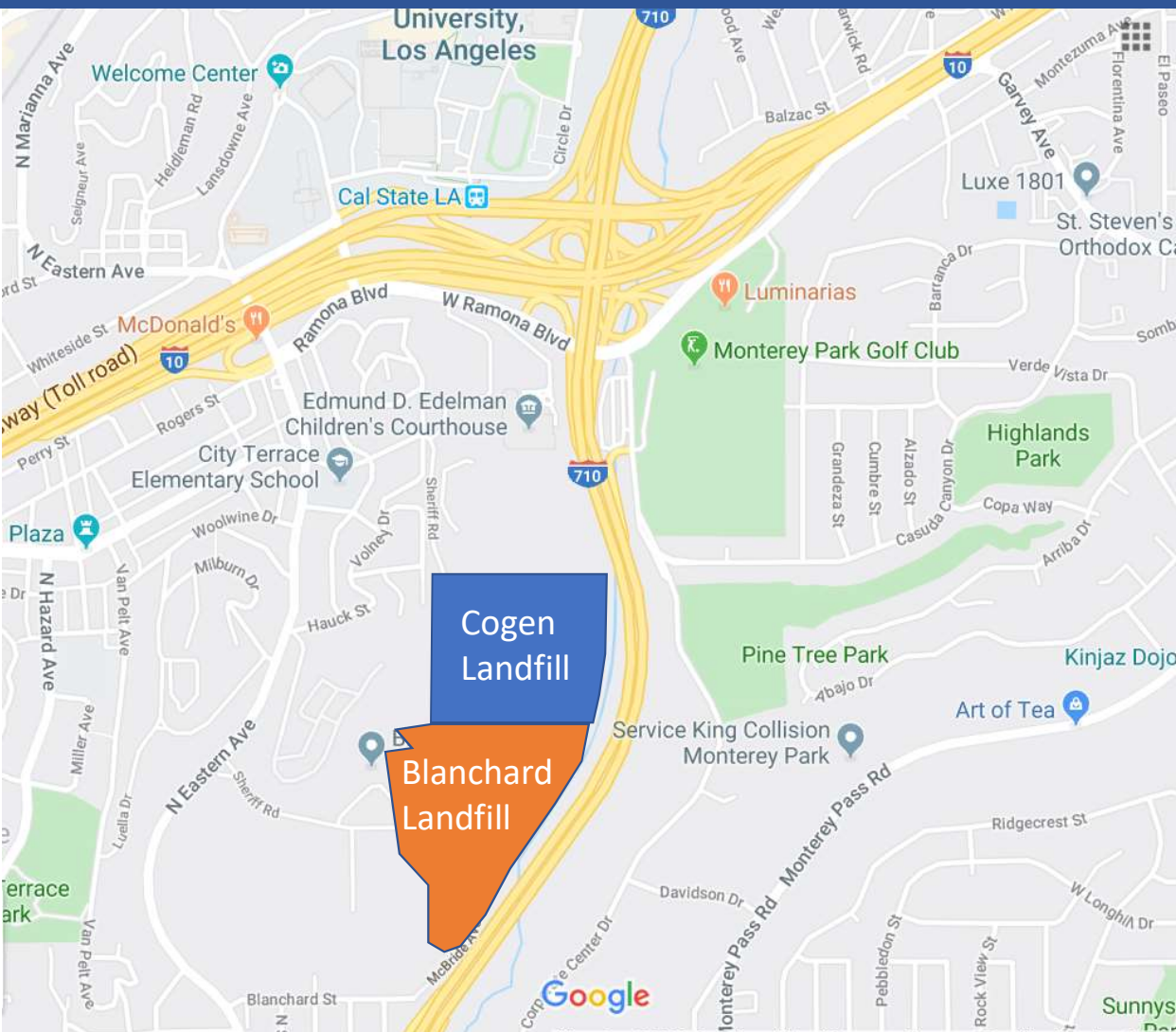
October 29, 2019



Tonight's Agenda

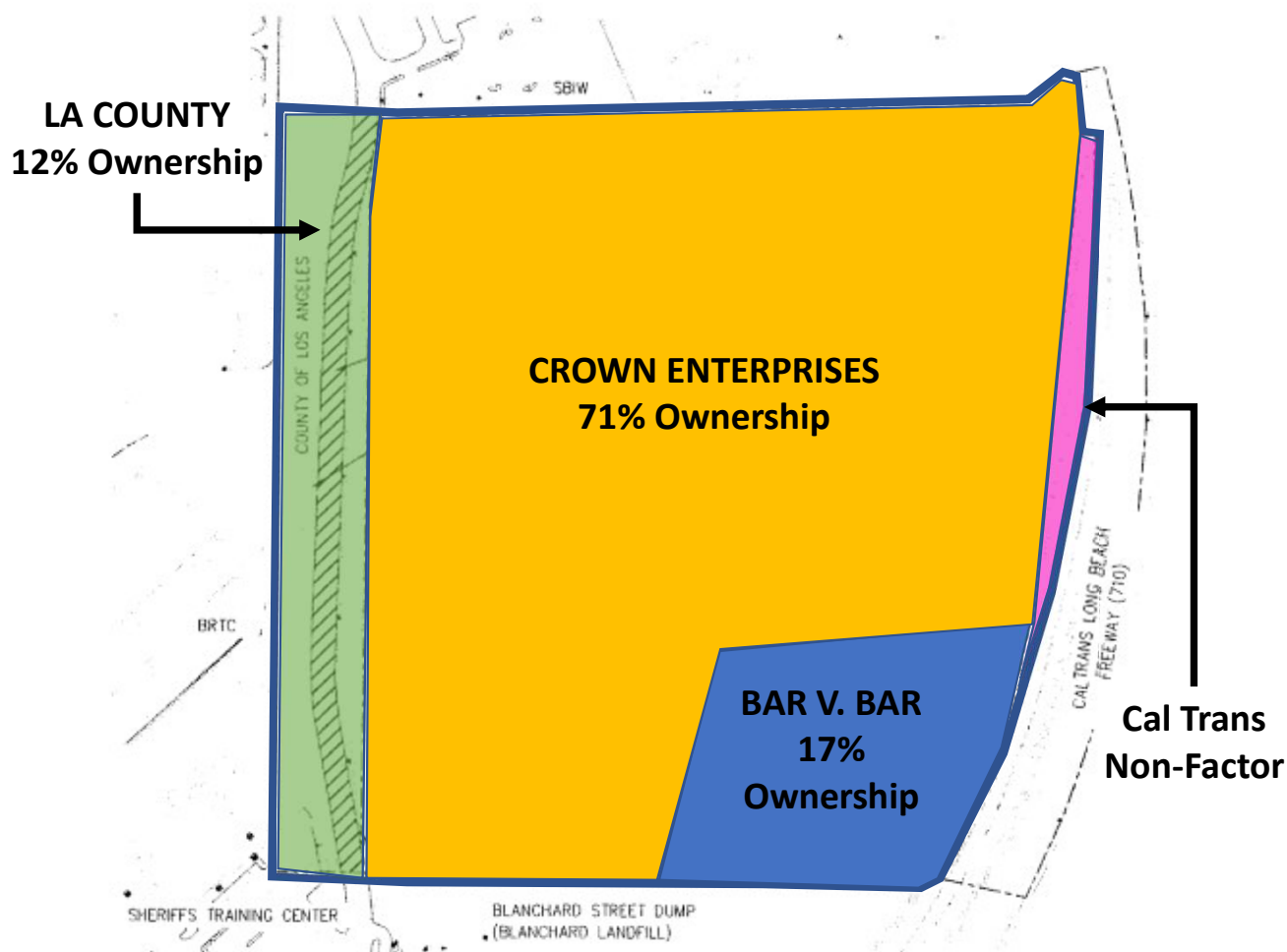
- Welcome
 - Supervisor Hilda L. Solis
- Project Background
 - Director Mark Pestrella, Public Works
- Local Enforcement Agency (LEA) Role
 - Dr. Barbara Ferrer, Public Health
- Project Description
 - Alicia Ramos, Public Works
- Questions and Answers
- Next Steps

Where are the Former Eastern Hill Landfills?



- Cogen and Blanchard are “Legacy Landfills” which means they were opened and operated prior to the establishment of the 1977 State required permitting
- Cogen operated from 1951 to 1958 and was closed in 1959
- Blanchard operated from 1935 to 1958. Slope stabilization, irrigation, and gas extraction system are complete.

Who Owns COGEN?



- Cogen ownership is shared among four entities:
 - Crown Enterprises (71%)
 - Bar V. Bar (17%)
 - LA County (12%)
 - Cal Trans (see below)
- Cal Trans is the fourth entity (indicated in pink), however, removed their portion of the landfill material when the 710 FWY was constructed in 1958
- Blanchard ownership(not shown)
 - County (75%)
 - Bar V. Bar (25%)

Former Cogen Landfill Facility DPH Roles and Responsibilities

Dr. Barbara Ferrer, PhD, MPH, MEd

Director

Los Angeles County Department of Public Health

October 29, 2019

What is the Department of Public Health's Role?

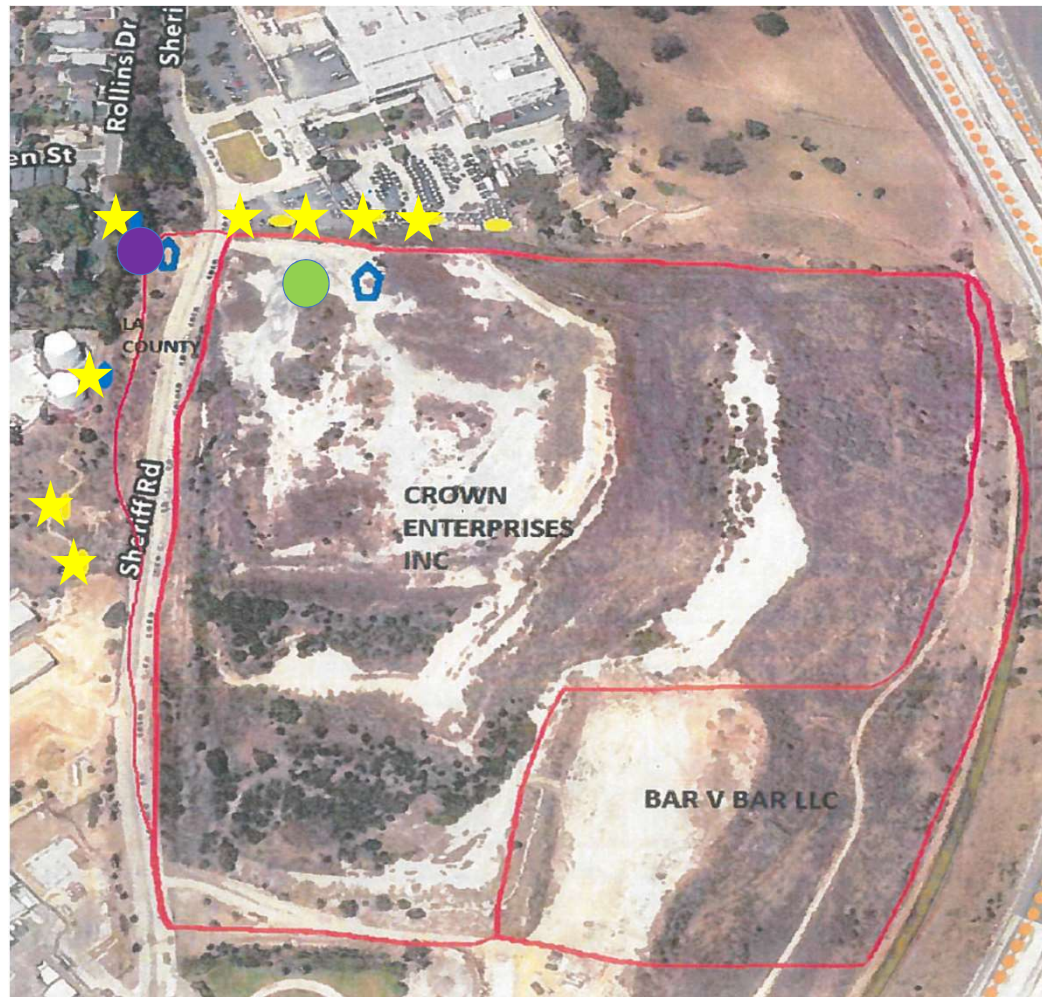
- DPH is the Local Enforcement Agency (LEA), acting on behalf of CalRecycle and has local regulatory authority to ensure landfills comply with state and local laws
- DPH also ensures that the public is protected from health risks due to environmental exposures

Local Enforcement Actions Taken:

- LEA conducts quarterly monitoring of methane gas
- LEA reviews monthly DPW monitoring reports of methane gas
- In 2010, LEA identified exceedances of methane levels and issued violations to all 3 responsible parties, requiring a mitigation program
- Between 2010 and 2019, LEA has continued to work with responsible parties to obtain compliance
- Upon completion of gas control system, post closure landuse plan will be submitted to the LEA for review and approval

Landfill Gas Monitoring and Control System

- Existing gas control system
- ★ Existing gas monitoring well
- Proposed gas control system



Does the landfill pose an immediate threat to health and safety?

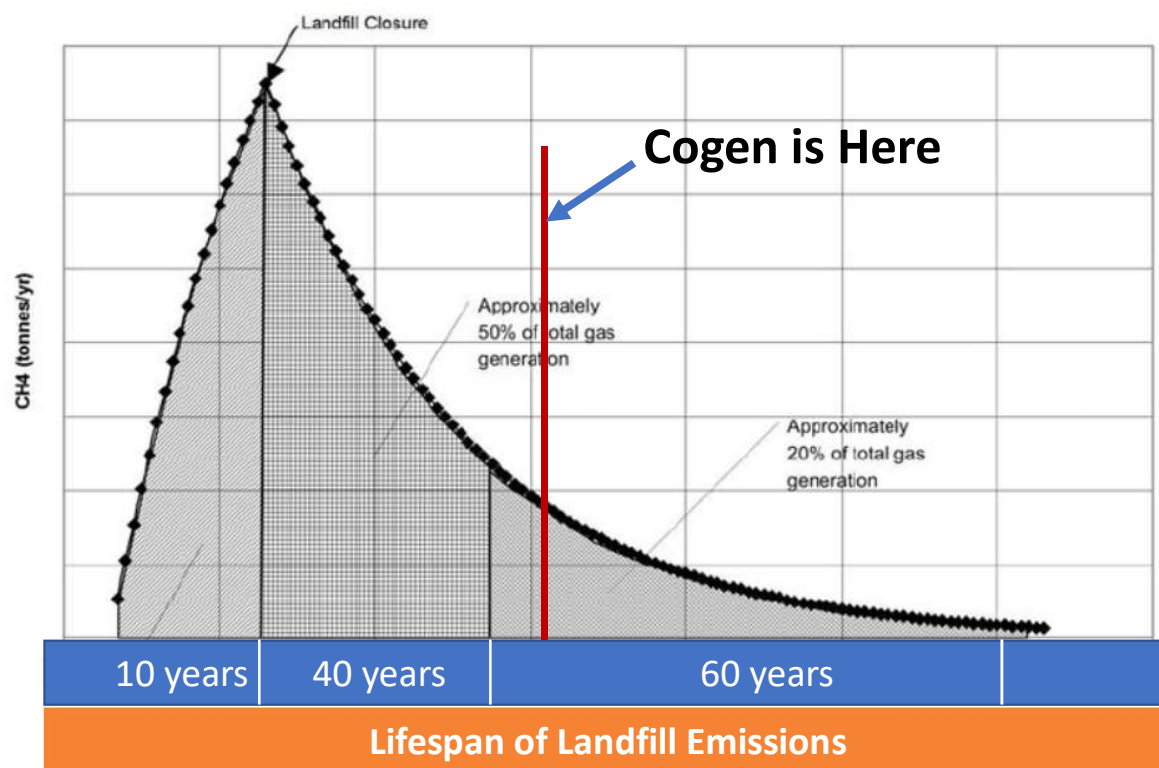
No. Based on ongoing monitoring results and the assessment of immediate hazards, methane gas levels are acceptable.

The LEA will continue to monitor as part of the inspection process and review responsible party monitoring reports to protect public health.

DPH Recommendations

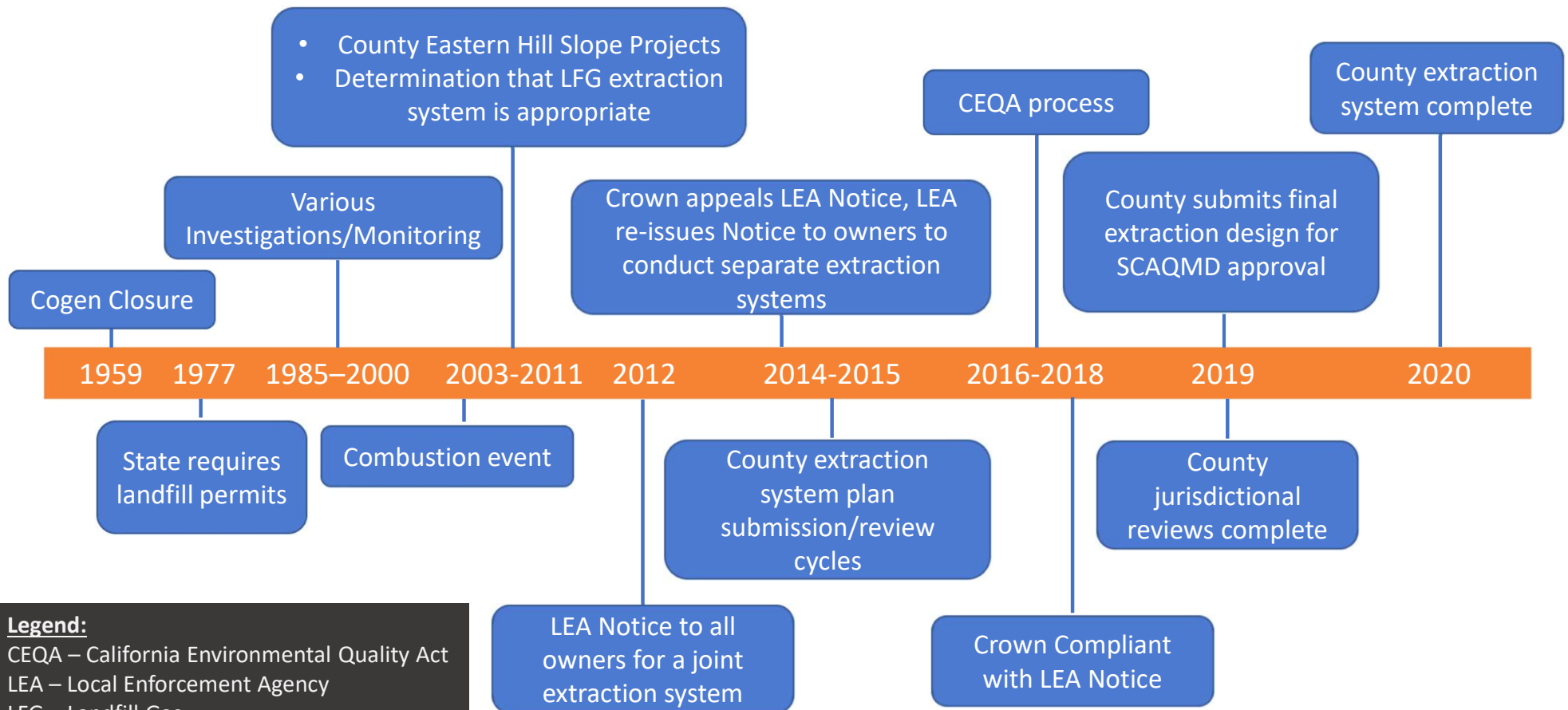
- Continue to monitor gases to ensure health and safety of nearby residents
- Commission a comprehensive long-term health risk assessment
- Expedite implementation of the mitigation project

Landfill Lifespan



- LFG (landfill gas) emissions are greatest for the first 10 years during operation
- Approximately the next 30-40 years become a “Steady State” with a consistent decline in emissions
- Emissions will continue to decline in the last 60 years
- Factors that affect landfill gas production include: Waste composition, Refuse age, Oxygen content, Moisture content, and Temperature

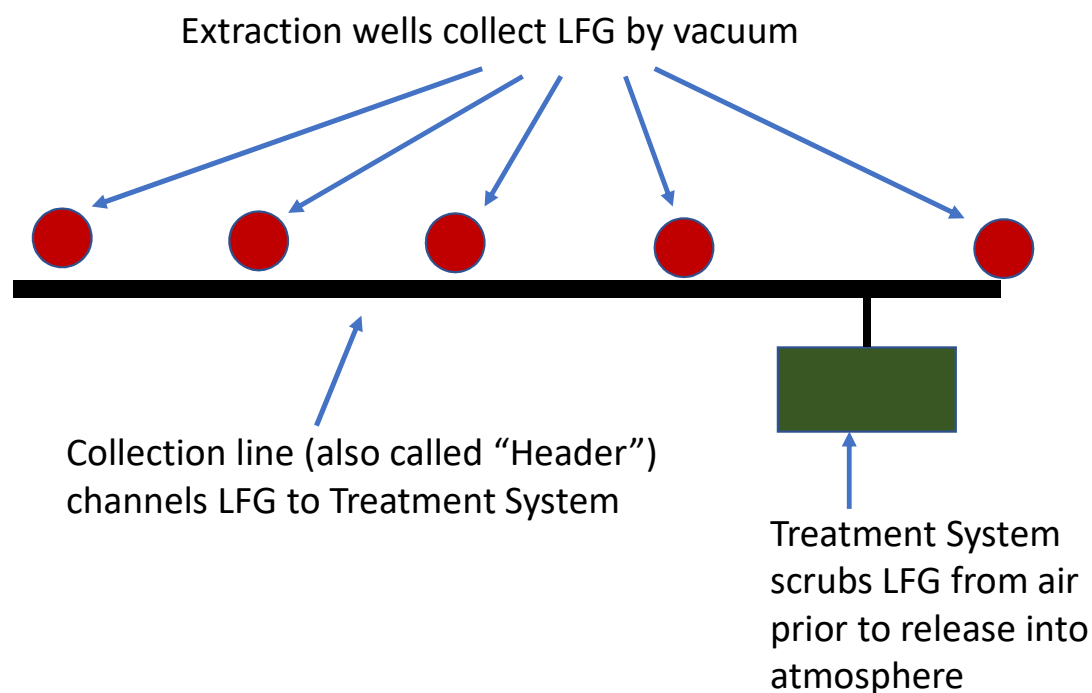
Cogen History and Next Steps



Legend:

CEQA – California Environmental Quality Act
 LEA – Local Enforcement Agency
 LFG – Landfill Gas
 SCAQMD – South Coast Air Quality Management District

How Does an LFG Extraction System Work?



- Extraction wells which extend into the ground will be placed along the west side of Sheriff Road to collect LFG
- LFG is collected and piped to a treatment system that scrubs the air to remove the predominance of VOCs before it is released to the atmosphere
- This system will continue to be monitored to ensure its effectiveness



SCAQMD Community Meeting

DATE: Thursday, November 14, 2019

LOCATION: To be determined

Contact

For more information, please contact us at:

Project Manager: Alicia Ramos

Phone Number: (626) 300-2605

Email: cogenlandfill@pw.lacounty.gov

Website: pw.lacounty.gov/pmd1/cogenlandfill