



GAIL FARBER, Director

# COUNTY OF LOS ANGELES

## DEPARTMENT OF PUBLIC WORKS

*"To Enrich Lives Through Effective and Caring Service"*

900 SOUTH FREMONT AVENUE  
ALHAMBRA, CALIFORNIA 91803-1331  
Telephone: (626) 458-5100  
<http://dpw.lacounty.gov>

ADDRESS ALL CORRESPONDENCE TO:  
P.O. BOX 1460  
ALHAMBRA, CALIFORNIA 91802-1460

March 21, 2012

IN REPLY PLEASE  
REFER TO FILE: **SM-1**

Mr. Carlos Alba, City Engineer  
City of Artesia  
18747 Clarkdale Avenue  
Artesia, CA 90701

Attention Mr. Hui Lai

Dear Mr. Alba:

### **CONSOLIDATED SEWER MAINTENANCE DISTRICT CONDITION ASSESSMENT PROGRAM REPORTS PROJECT NOS. Y0TV0708C AND Y0TV0809B**

This letter is to inform you that as part of the Sewer Condition Assessment Program, the County of Los Angeles Department of Public Works Consolidated Sewer Maintenance District has completed the closed-circuit television inspection of 164,840 feet or 100 percent of the City of Artesia's sewer system as part of the two inspection projects referenced above.

The enclosed reports for each of the respective inspection projects outline the structural and maintenance ratings of your system based on the Pipeline Assessment and Certification Program's rating methodology. Included in the reports are the following:

- Condition Assessment Report
- Project Overview Map (Enclosure 1)
- Quick Maintenance Rating Report Priority List and Quick Maintenance Rating Map (Enclosure 2)
- High Water Levels List and Map (Enclosure 2)
- Infiltration List and Map (Enclosure 2)
- Quick Structural Rating Report Priority List and Quick Structural Rating Map (Enclosure 3)
- Infrastructure Inspection Reports for Grades 4 and 5 (Enclosure 4)

Mr. Carlos Alba  
March 21, 2012  
Page 2

The Condition Assessment Report will provide you with details regarding the maintenance and structural condition of your City's sewer mainlines. This information should be included in your agency's Sewer System Management Plan as a reference in Chapter 8.0 System Evaluation and Capacity Assurance Plan. The segments with critical maintenance issues have been cleaned and, in some instances, incorporated into our enhanced maintenance schedule for continued monitoring. In addition, the segments with severe structural defects have either been repaired or will be scheduled for repair as part of the ongoing Accumulative Capital Outlay Project.

If you have any questions regarding this report or the Condition Assessment Program, please contact Mr. Robert Swartz, Sewer Maintenance Division, at (626) 300-3367, Monday through Friday, 8 a.m. to 4 p.m., or [rswartz@dpw.lacounty.gov](mailto:rswartz@dpw.lacounty.gov).

Very truly yours,

GAIL FARBER  
Director of Public Works



KEITH E. LEHTO  
Assistant Deputy Director  
Sewer Maintenance Division

EL:sb  
H:\SMHOME\GYoung\Memos.Letters\2348.doc

Enc.

bc: Programs Development (Chinn)

KL, MM, RS, FV, File (Project Y0TV0708C & Y0TV0809B), SPINDLE

**CONDITION ASSESSMENT REPORT  
COUNTY OF LOS ANGELES DEPARTMENT OF PUBLIC WORKS  
CONSOLIDATED SEWER MAINTENANCE DISTRICT**

**100 PERCENT SUMMARY**

SUP. DISTRICT(S) 4	MAP PAGE(S): 2029, 2030
Report By: Eric Liu	Report Date: 07/25/2011

**INTRODUCTION**

As part of the Sewer Condition Assessment Program, the County of Los Angeles Department of Public Works Consolidated Sewer Maintenance District (District) has completed the closed-circuit television (CCTV) inspection of 164,840 feet or 100 percent of the City of Artesia’s (City) sewer system.

The CCTV inspection in the City was completed as part of Project Nos. Y0TV0708C and Y0TV0809B. Enclosed for your reference are the reports.

**SUMMARY MAINTENANCE REPORT**

Our inspection revealed that approximately 94 percent of the system televised was free of blockages or restrictions that would impede sewer flows. The remaining 6 percent of the inspected pipe segments within the City area had a Pipeline Assessment and Certification Program (PACP) maintenance grade of 4 or 5 as indicated in the Quick Maintenance Rating Table shown below. Corrective actions to mitigate the deficiencies in these segments have been taken as noted in the enclosed reports.

**QUICK MAINTENANCE RATING TABLE**

DEFECT GRADE	PIPE LENGTH (FT)	PERCENT TOTAL INSPECTED PIPE LENGTH	NO. SEGMENTS
1: Minor	39,731	24.1	180
2: Minor to Moderate	105,345	63.9	442
3: Moderate	9,843	6.0	38
4: Significant	4,927	3.0	20
5: Most Significant	4,994	3.0	23
TOTAL	164,840	100.0	703

## **SUMMARY STRUCTURAL REPORT**

Our inspection revealed that approximately 96.9 percent of the inspected pipe segments within the City were free of severe structural defects. However, the remaining 3.1 percent of the inspected pipe segments had a PACP structural grade of 4 or 5 as indicated in the Quick Structural Rating Table shown below. The priority lists for these items are located in the enclosed reports.

### **QUICK STRUCTURAL RATING TABLE**

<b>DEFECT GRADE</b>	<b>PIPE LENGTH (FT)</b>	<b>PERCENT TOTAL INSPECTED PIPE LENGTH</b>	<b>NO. SEGMENTS</b>
1: Minor	108,532	65.9	480
2: Minor to Moderate	18,166	11.0	73
3: Moderate	32,993	20.0	129
4: Significant	3,293	2.0	12
5: Most Significant	1,856	1.1	9
TOTAL	164,840	100.0	703

**CONDITION ASSESSMENT REPORT  
COUNTY OF LOS ANGELES DEPARTMENT OF PUBLIC WORKS  
CONSOLIDATED SEWER MAINTENANCE DISTRICT**

---

PROJECT NAME:	Y0TV0809B	PROJECT MGR:	Kari Eskridge
PROJECT DATE:	01/23/2009	CONTACT NO:	(626) 300-3390
SUP. DISTRICT(s):	4	MAP PAGE(S):	2029
Report By:	Eric Liu	Report Date:	07/19/2011

---

**INTRODUCTION**

As part of the Sewer Condition Assessment Program, the County of Los Angeles Department of Public Works Consolidated Sewer Maintenance District (District) has completed the closed-circuit television (CCTV) inspection of 90,665 feet or 55 percent of the City of Artesia's (City) sewer system. This is the section of your City located north of 183rd street. Enclosed for your reference is an overview map of the project area within your City (Enclosure 1).

The Sewer Condition Assessment Program utilizes the Pipeline Assessment and Certification Program (PACP Version 6.0.1) Quick Rating methodology to rank the structural and maintenance condition of your system based on industry standards.

**DEFECT GRADE DESCRIPTION**

The Quick Rating indicates the number of occurrences for the highest severity grade for each pipe segment for either maintenance or structural defects. A grade of 1 indicates that a pipe segment is in excellent condition with minor defects while a grade of 5 indicates that a pipe segment may require immediate attention. A detailed breakdown of the five possible defect grades is as follows:

<b>Grade</b>	<b>Defect Grade Description</b>
<b>1:</b>	<b>MINOR</b>
<b>2:</b>	<b>MINOR TO MODERATE</b>
<b>3:</b>	<b>MODERATE</b>
<b>4:</b>	<b>SIGNIFICANT</b>
<b>5:</b>	<b>MOST SIGNIFICANT</b>

## **MAINTENANCE REPORT**

Our inspection revealed that approximately 93 percent of the system televised was free of blockages or restrictions that would impede sewer flows. However, the remaining 7 percent of the inspected pipe segments within the City area had a PACP maintenance grade of 4 or 5 as indicated in the Quick Maintenance Rating Table shown below. These segments have been incorporated into our routine cleaning schedule with corrective action taken as noted on the Quick Maintenance Rating Report Priority List (Enclosure 2).

In addition, a color-coded map showing the quick maintenance rating for each pipe segment is provided in Enclosure 2.

### **QUICK MAINTENANCE RATING TABLE**

<b>DEFECT GRADE</b>	<b>PIPE LENGTH (FT)</b>	<b>PERCENT TOTAL INSPECTED PIPE LENGTH</b>	<b>NO. SEGMENTS</b>
1: Minor	955	1.1	5
2: Minor to Moderate	79,700	87.9	336
3: Moderate	3,649	4.0	14
4: Significant	2,383	2.6	8
5: Most Significant	3,978	4.4	19
<b>TOTAL</b>	<b>90,665</b>	<b>100.0</b>	<b>382</b>

### ***Lateral Notices***

Also included on the Quick Maintenance Rating Report Priority List are deficiencies discovered inside lateral connections to the mainline. The District does not maintain lateral lines; it is the responsibility of the property owner to maintain their respective lateral lines to facilitate the flow of wastewater from their property to the mainline. A letter will be sent to the lateral owner notifying them of the maintenance issues discovered in their lateral. A sample lateral notice letter is provided in Enclosure 2 for your reference.

### ***High Water Levels***

Our inspection revealed that approximately 94.6 percent of the system televised has adequate capacity. However, the remaining 5.4 percent of the inspected segments included deficiencies associated with high water levels. Capacity of the sewer pipe can be determined by analyzing several PACP codes, including Water Level, Water Mark, and miscellaneous remarks, which have indicated camera underwater or sags in the line. A sewer pipe can be considered at capacity when 50 percent of the diameter of sewer pipe is full of water. However, there are particular conditions in which the water level or water mark has reached 50 percent or greater due to heavy flows in adjoining pipes, a temporary stoppage due to debris in the sewer lines, or a sag in the line.

Therefore, additional review of all pipe segments with such high water level concerns was conducted to determine capacity issues, if any. All sewer pipes where Water Level, Water Mark, and miscellaneous remarks of camera underwater or sags in the line are at or above 50 percent capacity, have been outlined and analyzed on the High Water Level Table in Enclosure 2. The nature of these high water level conditions is also summarized on this table.

A map showing the sewer lines with high water levels is provided in Enclosure 2.

***Infiltration***

Our inspection revealed that infiltration was not detected in any pipe segment in your City's system.

**STRUCTURAL REPORT**

Our inspection revealed that approximately 96.6 percent of the inspected pipe segments within the City were free of severe structural defects. However, the remaining 3.4 percent of the inspected pipe segments had a PACP structural grade of 4 and 5 as indicated in the Quick Structural Rating Table shown below. These segments have been placed on a priority list based on the severity and need for action. For items 1 through 12 in the Quick Structural Rating Report Priority List (Enclosure 3), which require a corrective action, the proposed repair or replacement will be scheduled in the next 24 months as part of the ongoing Accumulative Capital Outlay Project. A color-coded map showing the Quick Structural Rating for each pipe segment is located in Enclosure 3. Copies of the actual inspection report for these 12 segments are included in Enclosure 4.

**QUICK STRUCTURAL RATING TABLE**

<b>DEFECT GRADE</b>	<b>PIPE LENGTH (FT)</b>	<b>PERCENT TOTAL INSPECTED PIPE LENGTH</b>	<b>NO. SEGMENTS</b>
1: Minor	58,249	64.3	254
2: Minor to Moderate	9,982	11.0	42
3: Moderate	19,294	21.3	74
4: Significant	2,205	2.4	8
5: Most Significant	935	1.0	4
<b>TOTAL</b>	<b>90,665</b>	<b>100.0</b>	<b>382</b>

**FUTURE PROJECTS**

The Sewer Condition Assessment Program has performed a CCTV inspection of the following sewer lines within the City:

<b>FISCAL YEAR</b>	<b>PROJECT NAME</b>	<b>LENGTH (FT)</b>	<b>PERCENTAGE OF SYSTEM</b>	<b>STATUS</b>
2007-08	Y0TV0708C	74,175	45.0	COMPLETED
2008-09	Y0TV0809B	90,665	55.0	COMPLETED
<b>TOTAL</b>			<b>100.0</b>	

CCTV Project Y0TV0809B

City of Artesia

(North of 183rd Street)

ENCLOSURE 1:

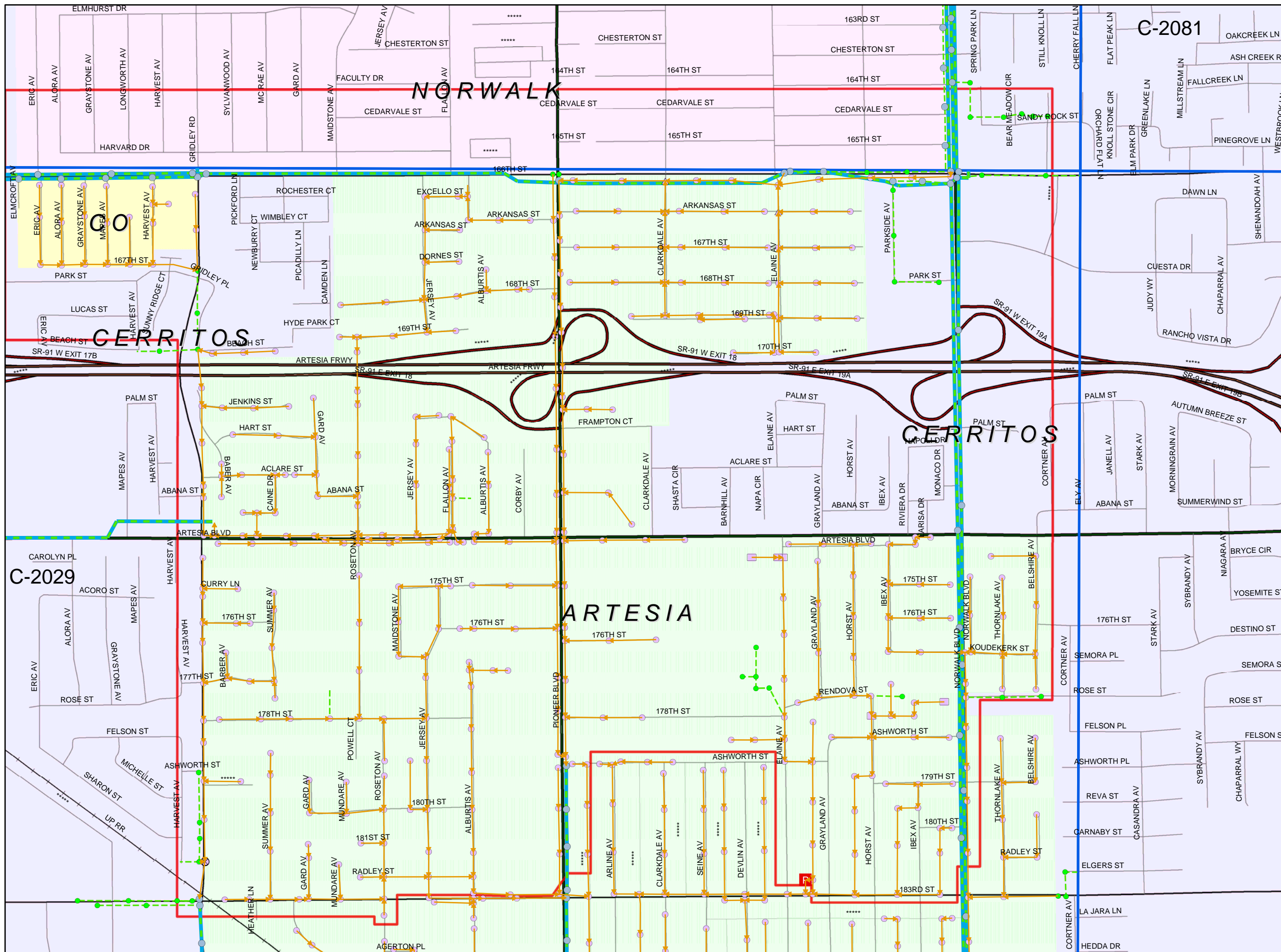
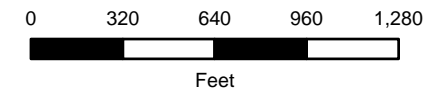
Project Overview Map



# OVERVIEW MAP ARTESIA

## CCTV PROJECT Y0TV0809B

Cities of  
Artesia, Bellflower, Bell Gardens,  
Commerce, Lakewood, Paramount  
& County Unincorporated



### Legend

- SMD Sanitary Sewers
- SMD Manholes**
  - Other
  - Manhole Type**
    - Standard
    - DROP
    - Shallow
    - Trap
    - Siphon
    - SMD Pump Stations
    - SMD Treatment Plants
  - Maintained by Others:**
    - Trunk Sewerlines
    - Non SMD Sanitary Sewers
    - Non SMD Maintained MH
    - SMD Operations Maps
    - CCTV PROJECT AREA

This map is intended only for internal operations of the Los Angeles County Sewer Maintenance Districts. Los Angeles County expressly disclaims any liability for any inaccuracies which may be present in this map. Data contained in this map is produced in whole or part from the Thomas Bros. Maps® digital database. This map is copyrighted, and reproduced with permission granted, by Thomas Bros. Maps®. All rights reserved.

JUNE 2011

## ENCLOSURE 2:

- Quick Maintenance Rating Report  
Priority List
- Quick Maintenance Rating Map
- High Water Levels
- High Water Levels Map
- Sample Lateral Notice Letter

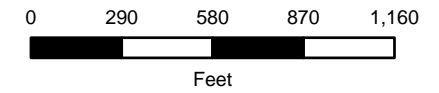
**ENCLOSURE 2**  
**QUICK MAINTENANCE RATING REPORT PRIORITY LIST**  
**CITY OF ARTESIA (Y0TV0809B)**

as of 01/23/09

Item No.	QMR	Start MH	End MH	Street	Observation	Corrective Action Taken
1	5141	2029-0291	2029-0309	FLALLON AV	High flow	Hydrojet (completed 01/12/12)
2	5141	2029-0318	2029-0317	166TH ST	High flow	Hydrojet (completed 01/12/12)
3	5141	2029-0318	2029-0319	166TH ST	High flow	Hydrojet (completed 01/12/12)
4	513H	2029-0085	2029-0087	PIONEER BV	Grease; high water mark	Hydrojet (completed 08/25/09)
5	5100	2029-0271	2029-0272	ARTESIA BV	High flow	Hydrojet (completed 01/12/12)
6	5100	2029-0272	2029-0274	ARTESIA BV	High flow	Hydrojet (completed 01/12/12)
7	5100	2029-0274	2029-0275	ARTESIA BV	High flow	Hydrojet (completed 01/12/12)
8	5100	2029-0275	2029-0618	ARTESIA BV	High flow	Hydrojet (completed 01/12/12)
9	5100	2029-0279	2029-0280	ARTESIA BV	High flow	Hydrojet (completed 01/12/12)
10	5100	2029-0279	2029-0283	ARTESIA BV	High flow	Hydrojet (completed 01/12/12)
11	5100	2029-0280	2029-0282	ARTESIA BV	High flow	Hydrojet (completed 01/12/12)
12	5100	2029-0280	2029-0618	ARTESIA BV	High flow	Hydrojet (completed 01/12/12)
13	5100	2029-0281	2029-0282	ARTESIA BV	High water mark	Hydrojet (completed 01/12/12)
14	5100	2029-0282	2029-0284	ARTESIA BV	High flow	Hydrojet (completed 01/12/12)
15	5100	2029-0283	2029-0285	ARTESIA BV	High flow	Hydrojet (completed 01/12/12)
16	5100	2029-0284	2029-0286	ARTESIA BV	High flow	Hydrojet (completed 01/12/12)
17	5100	2029-0285	2029-0289	ARTESIA BV	High flow	Hydrojet (completed 01/12/12)
18	5100	2029-0289	2029-0290	ARTESIA BV	High flow	Hydrojet (completed 01/12/12)
19	5100	2029-0291	2029-0290	ARTESIA BV	High flow	Hydrojet (completed 01/12/12)
20	4321	2029-0421	2029-0422	Easement by HORST and 183RD	Roots	Rodder (completed 08/25/09)
21	4131	2029-0096	2029-0098	PIONEER BV	Grease; camera under water; sag	Hydrojet (completed 08/25/09)
22	4122	2029-0598	2029-0599	Easement by ASHWORTH and GRAYLAND	Grease; small root; root ball lateral	Hydrojet (completed 01/12/11). Letter to homeowner.
23	4122	2029-0603	2029-0604	Easement by ASHWORTH and ELAINE	Alignment change	No action needed.
24	4121	2029-0049	2029-0051	ROSETON AV	Root ball lateral	Letter to homeowner.
25	4121	2029-0051	2029-0052	ROSETON AV	Small root ball lateral	No action needed.
26	4121	2029-0409	2029-0410	Easement by ASHWORTH and HORST	Small roots; root ball lateral	Hydrojet (completed 05/25/11). Letter to homeowner.
27	4100	2029-0314	2029-0328	CLARKDALE AV	Grease; sag	Hydrojet (completed 02/23/11)

ENCLOSURE 2  
CCTV PROJECT  
YOTV0809B

ARTESIA  
QUICK  
MAINTENANCE  
RATING  
(QMR)



Legend

SMD Sanitary Sewers

QMR DEFECT GRADES

- 1: MINOR
- 2: MINOR TO MODERATE
- 3: MODERATE
- 4: SIGNIFICANT
- 5: MOST SIGNIFICANT

SMD Manholes

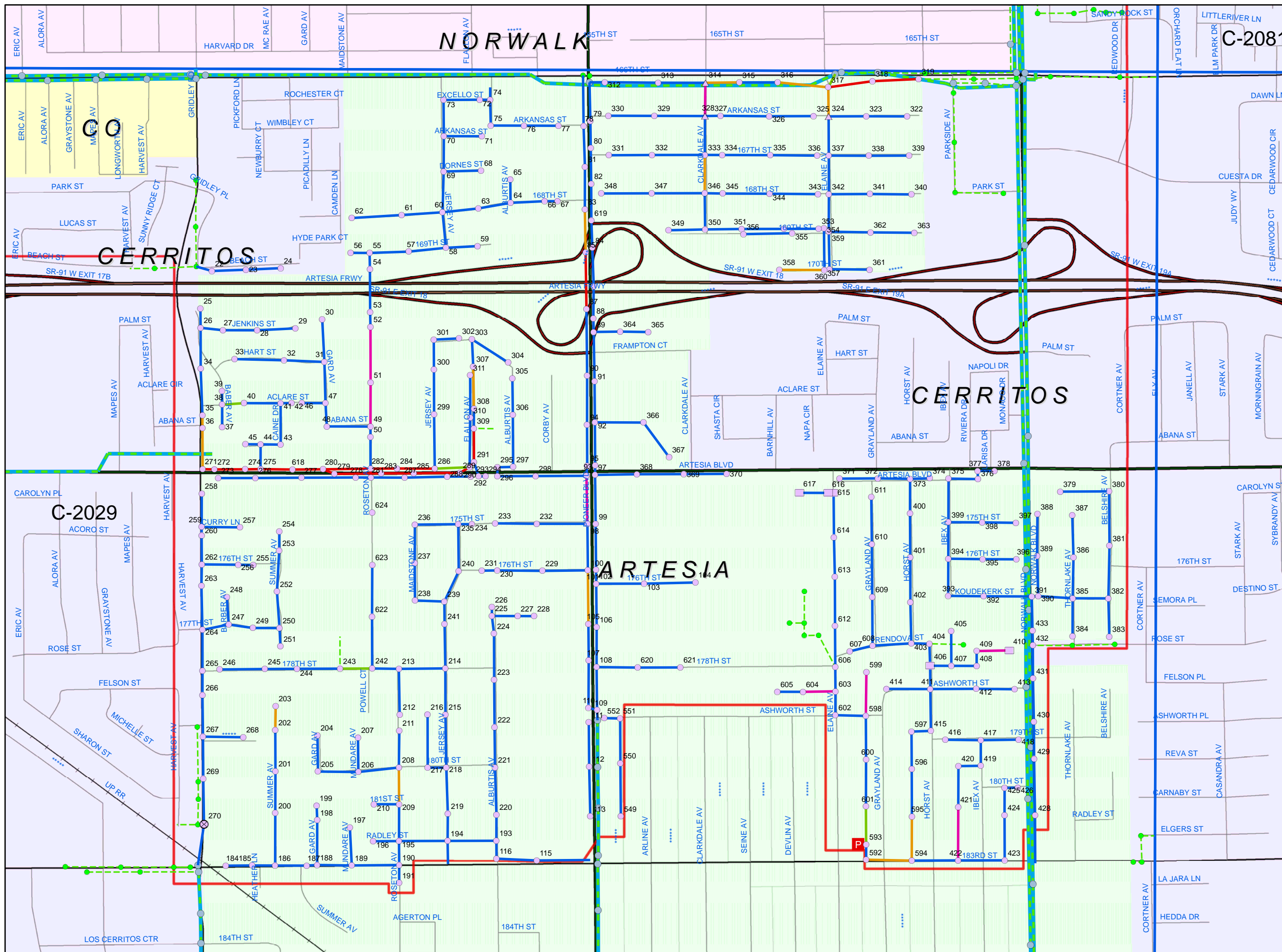
- Other
- Standard
- DROP
- Shallow
- Trap
- Siphon
- SMD Pump Stations
- SMD Treatment Plants

Maintained by Others:

- Trunk Sewerlines
- Non SMD Sanitary Sewers
- Non SMD Maintained MH
- SMD Operations Maps
- CCTV PROJECT AREA

This map is intended only for internal operations of the Los Angeles County Sewer Maintenance Districts. Los Angeles County expressly disclaims any liability for any inaccuracies which may be present in this map. Data contained in this map is produced in whole or part from the Thomas Bros. Maps® digital database. This map is copyrighted, and reproduced with permission granted, by Thomas Bros. Maps®. All rights reserved.

NOVEMBER 2011



C-2081

C-2029

**ENCLOSURE 2**  
**HIGH WATER LEVELS**  
**CITY OF ARTESIA (Y0TV0809B)**  
as of 01/23/09

Item No.	QMR	START MH	END MH	STREET	OBSERVATION	
1	5141	2029-0291	2029-0309	FLALLON AV	High flow (due to local dairy business and Sanitation District pump station capacity)	(90%): at both MHs
2	5141	2029-0318	2029-0319	166TH ST	High flow (due to local dairy business and Sanitation District pump station capacity)	(90%): at both MHs
3	513H	2029-0085	2029-0087	PIONEER BV	High water mark	
4	5100	2029-0271	2029-0272	ARTESIA BV	High flow (due to local dairy business and Sanitation District pump station capacity)	(90%): at both MHs
5	5100	2029-0272	2029-0274	ARTESIA BV	High flow (due to local dairy business and Sanitation District pump station capacity)	(90%): at both MHs
6	5100	2029-0274	2029-0275	ARTESIA BV	High flow (due to local dairy business and Sanitation District pump station capacity)	(90%): at both MHs
7	5100	2029-0275	2029-0618	ARTESIA BV	High flow (due to local dairy business and Sanitation District pump station capacity)	(90%): at both MHs
8	5100	2029-0279	2029-0280	ARTESIA BV	High flow (due to local dairy business and Sanitation District pump station capacity)	(90%): at both MHs
9	5100	2029-0279	2029-0283	ARTESIA BV	High flow (due to local dairy business and Sanitation District pump station capacity)	(90%): at both MHs
10	5100	2029-0280	2029-0282	ARTESIA BV	High flow (due to local dairy business and Sanitation District pump station capacity)	(90%): at both MHs
11	5100	2029-0280	2029-0618	ARTESIA BV	High flow (due to local dairy business and Sanitation District pump station capacity)	(90%): at both MHs
12	5100	2029-0281	2029-0282	ARTESIA BV	High water mark	
13	5100	2029-0282	2029-0284	ARTESIA BV	High flow (due to local dairy business and Sanitation District pump station capacity)	(90%): at both MHs
14	5100	2029-0283	2029-0285	ARTESIA BV	High flow (due to local dairy business and Sanitation District pump station capacity)	(90%): at both MHs
15	5100	2029-0284	2029-0286	ARTESIA BV	High flow (due to local dairy business and Sanitation District pump station capacity)	(90%): at both MHs
16	5100	2029-0285	2029-0289	ARTESIA BV	High flow (due to local dairy business and Sanitation District pump station capacity)	(90%): at both MHs
17	5100	2029-0289	2029-0290	ARTESIA BV	High flow (due to local dairy business and Sanitation District pump station capacity)	(90%): at both MHs
18	5100	2029-0290	2029-0291	ARTESIA BV	High flow (due to local dairy business and Sanitation District pump station capacity)	(90%): at both MHs
19	5100	2029-0317	2029-0318	166TH ST	High flow (due to downstream trunkline)	(90%): at both MHs
20	4131	2029-0096	2029-0098	PIONEER BV	Sag	(50% - 80%): 170' - End MH
21	4100	2029-0314	2029-0328	CLARKDALE AV	Sag	(30% - 60%): Start MH - 24'

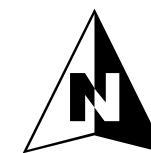
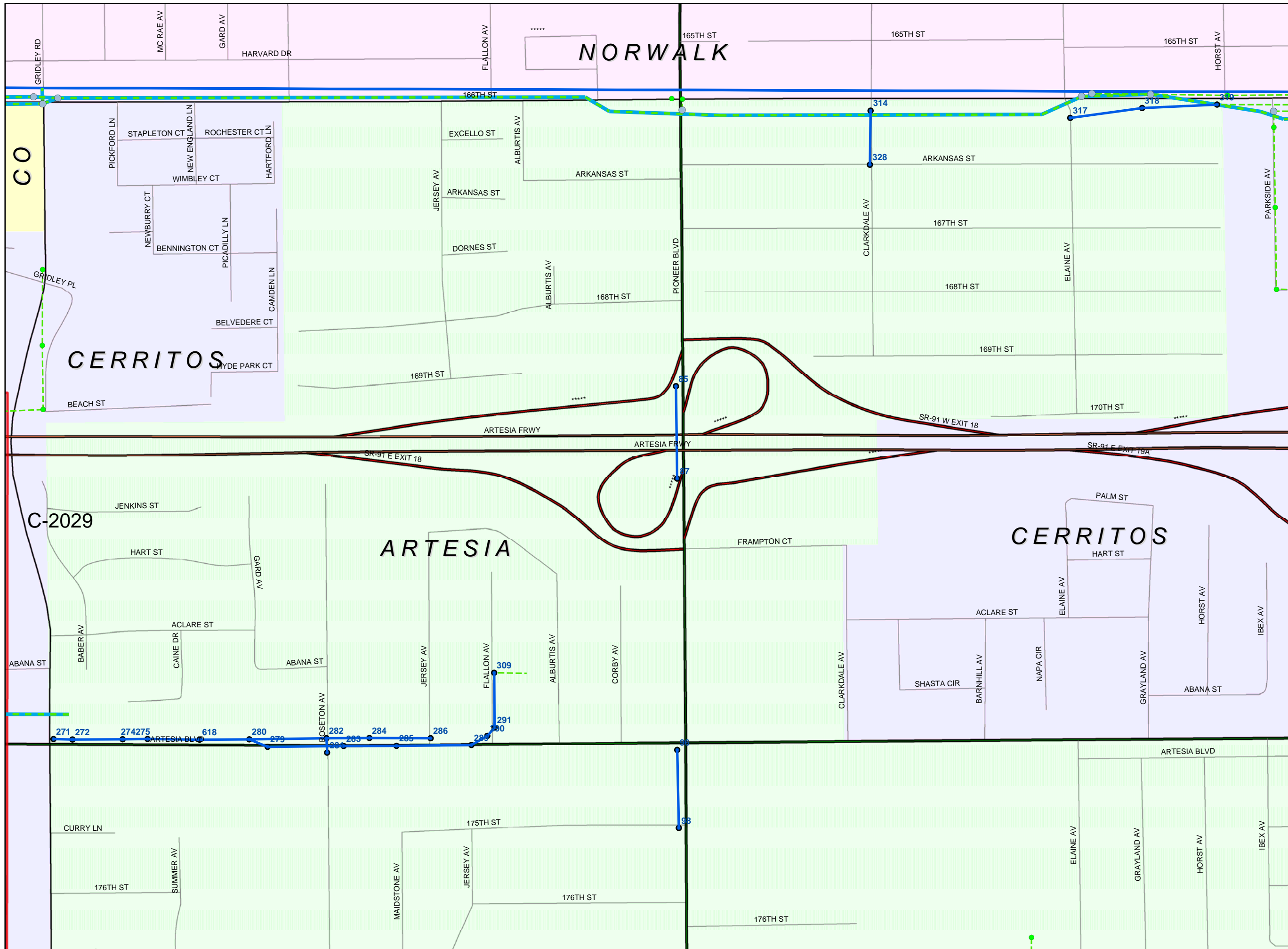


# ENCLOSURE 2

## CCTV PROJECT Y0TV0809B

### ARTESIA

### HIGH WATER LEVELS



### Legend

— High Water Levels

#### SMD Manholes

- ⊕ Other
- Standard
- ▲ DROP
- Shallow
- ◇ Trap
- ⊗ Siphon
- MH: High Water Levels
- Ⓟ SMD Pump Stations
- Ⓜ SMD Treatment Plants

#### Maintained by Others:

- Trunk Sewerlines
- - - Non SMD Sanitary Sewers
- Non SMD Maintained MH
- SMD Operations Maps
- CCTV PROJECT AREA

This map is intended only for internal operations of the Los Angeles County Sewer Maintenance Districts. Los Angeles County expressly disclaims any liability for any inaccuracies which may be present in this map. Data contained in this map is produced in whole or part from the Thomas Bros. Maps® digital database. This map is copyrighted, and reproduced with permission granted, by Thomas Bros. Maps®. All rights reserved.

JULY 2011



GAIL FARBER, Director

# COUNTY OF LOS ANGELES

## DEPARTMENT OF PUBLIC WORKS

*"To Enrich Lives Through Effective and Caring Service"*

900 SOUTH FREMONT AVENUE  
ALHAMBRA, CALIFORNIA 91803-1331  
Telephone: (626) 458-5100  
<http://dpw.lacounty.gov>

ADDRESS ALL CORRESPONDENCE TO:  
P.O. BOX 1460  
ALHAMBRA, CALIFORNIA 91802-1460

May 26, 2011

IN REPLY PLEASE

REFER TO FILE:

SM-1

Dear:

### SEWER LATERAL ROOT INTRUSION

As the agency responsible for the maintenance of the sanitary sewer system in your area, the County of Los Angeles Consolidated Sewer Maintenance District (District) is providing you with this letter informing you that the sewer lateral serving the property located at XXXX, requires maintenance and is in violation of **County Code 20.24.080 Maintenance of Sewer Laterals**, which states:

***"All house laterals, industrial connection sewers, septic tank outlet connections to STEP system, and appurtenances thereto existing as of January 23, 1953, or thereafter constructed, shall be maintained by the owner of the property served in a safe and sanitary condition, and all devices or safeguards which are required by this Division 2 for the operation thereof shall be maintained in good working order."***

Using closed-circuit television (CCTV) camera technology, the District recently televised the sanitary sewer mainline and discovered the presence of roots in your sewer lateral connection. The intrusion of the roots from your lateral may block the flow of sewage in the mainline sewer causing a sanitary sewer overflow upstream of your property.

Since the CCTV inspection, the sewer mainline has been cleaned and blockages from root growth have been removed; however, the root blockage in your sewer lateral is still present. As the property owner, you are responsible for the entire length of the sewer lateral, which includes the portion that extends beyond the property line into the public right of way. We request that you contact a qualified plumbing contractor to service

May 26, 2011  
Page 2

your sewer lateral within 90 days to remove roots and any other obstructions that may cause a sewage backup.

Prior to your plumbing contractor servicing your lateral, please notify the District's sewer maintenance yard in your area at XXXX to arrange for authorization to access the downstream manhole.

During your lateral service, your plumbing contractor must protect the District's sewer mainlines from dislodged roots and other debris by utilizing catcher baskets at the manhole downstream from your lateral connection.

After your lateral has been serviced, please notify the District office, XXXX, Sewer Maintenance Division, at XXXX.

For your reference, we have enclosed photos of your lateral connection showing the presence of the root blockage. Also enclosed are some literature on ways of minimizing sewer overflows and damage to your home.

Thank you for helping the Department of Public Works keep the public's sewers clean and in good working order.

Very truly yours,

GAIL FARBER  
Director of Public Works

KEITH LEHTO  
Assistant Deputy Director  
Sewer Maintenance Division

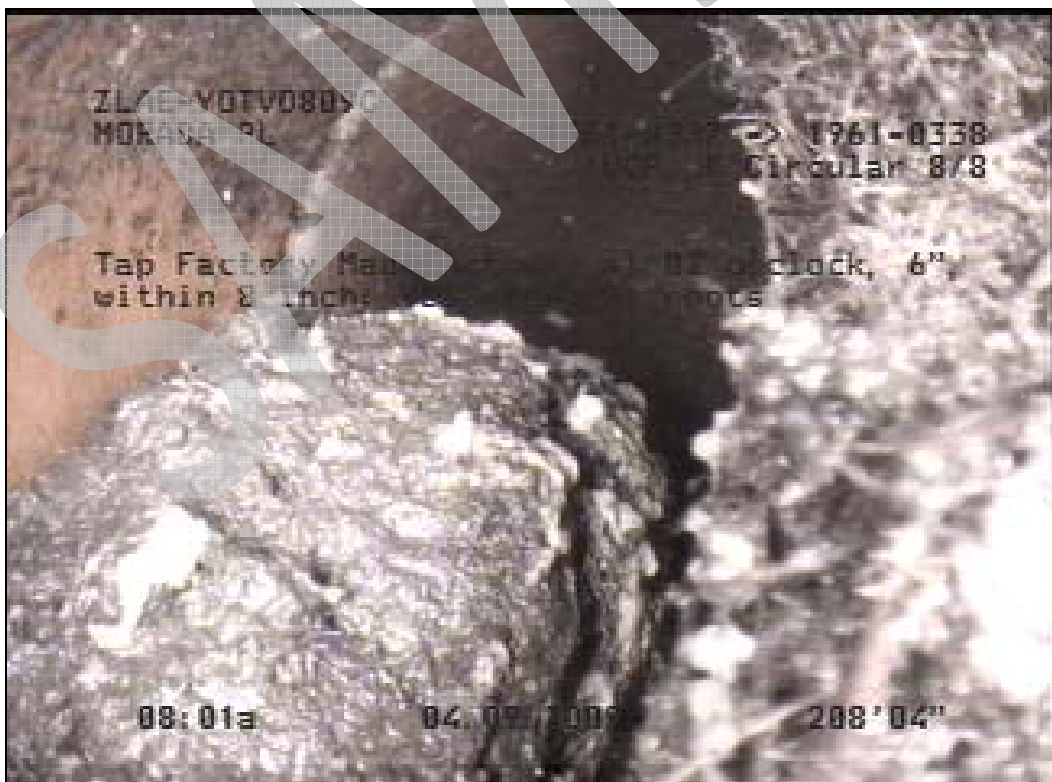
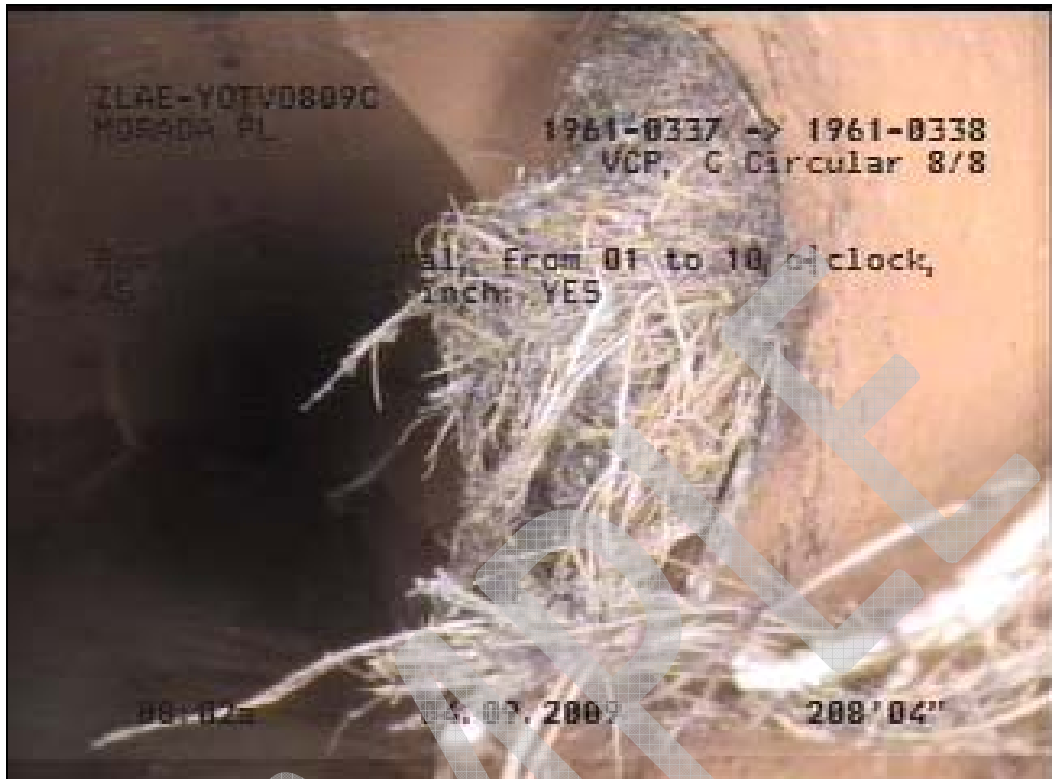
EL:

Enc.

bc: KL, MM, RS, FV, RH, File (Lateral Notice), SPINDLE



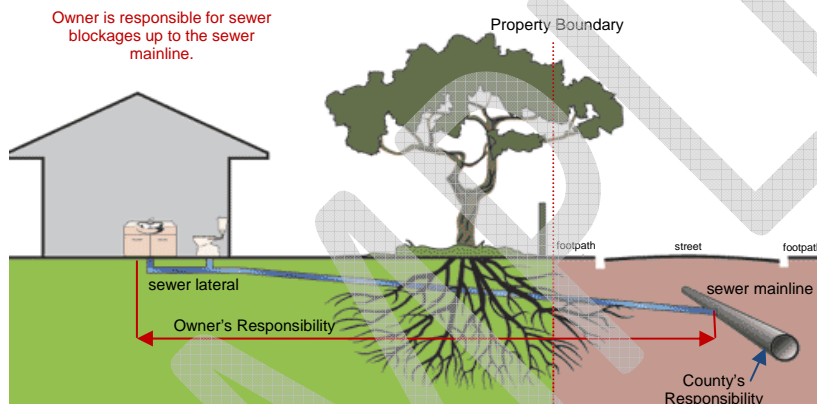
XXXX  
Roots at Lateral Connection



## Minimizing Sewer Overflows and Damage to Your Home

The sewer system within the County of Los Angeles Consolidated Sewer Maintenance District (District) is comprised of a series of underground pipes. Many are publicly owned; however, the sewer laterals are entirely owned by the private property owner they serve. The laterals extend from the building to the mainline within the street (or within an easement at the rear of your home). The laterals are typically four inches in diameter while the District's mainline is typically at least eight inches in diameter. The private property owner is responsible for the entire length of the lateral, which includes that portion that may be located within the public right of way (under the asphalt and street landscaping).

### SEWER LATERALS – AREAS OF RESPONSIBILITY



Sewer backups can cause tremendous damage to the interior of a home. In order to minimize these, the District provides continual maintenance services for the public sewer mainlines.

Unfortunately, sewer laterals are often not maintained by private property owners until a disaster strikes. "Out of sight, out of mind" is a typical approach to sewer lateral maintenance and operation by many. It is our hope that we can provide you various means of addressing these issues and thus minimize your risk of an overflow entering your home.

The three methods we suggest are:

1. Maintain your lateral through proper cleaning, repair, and replacement
2. Do not place improper items into the sewer or make improper connections to the sewer
  - a. Keep rainwater out of the sewer lines as it overwhelms the capacity of the sewer lines and may cause sewer spills.
  - b. Do not pour fats, oils, and grease in your drains as these products harden and stick to the inside of the sewer pipes, which build up and may eventually cause a blockage in the sewer pipe.
3. Install a backflow preventer and cleanout in your sewer lateral.

## ENCLOSURE 3:

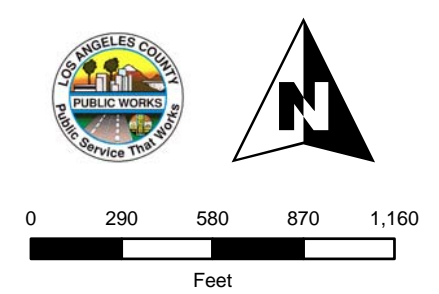
- Quick Structural Rating Report  
Priority List
- Quick Structural Rating Map

**ENCLOSURE 3**  
**QUICK STRUCTURAL RATING REPORT PRIORITY LIST**  
**CITY OF ARTESIA (Y0TV0809B)**

as of 01/23/09

Item No.	QSR	Start MH	End MH	Street	Observation: Location	Proposed Corrective Method	Length of Repair (FT)
1	5231	2029-0093	2029-0097	PIONEER BV	Hole with patch visible: 71'	Structural integrity in tact. No action needed.	-
2	5133	2029-0422	2029-0423	183RD ST	Broken with multiple fractures: 135'	Emergency Repair (Point Repair): completed October 2008	
3	5131	2029-0112	2029-0113	POINEER BV	Hole: 96'; fracture: 257'	Structural integrity in tact. No action needed.	-
4	5123	2029-0603	2029-0604	Easement by ELAINE & ASHWORTH	Hole: 42'; joint offset: 55'	Lining: MH to MH	214
5	4136	2029-0079	2029-0080	PIONEER BV	Broken with multiple fractures: 177'; cracks throughout	Lining: MH to MH	264
6	4134	2029-0068	2029-0069	DORNES ST	Fractures: 190', cracks	Lining: MH to MH	268
7	4134	2029-0058	2029-0060	JERSEY AV	Fractures: 151', 195'	Lining: MH to MH	231
8	4132	2029-0297	2029-0306	ALBURTIS AV	Broken due to tap break-in: 9', cracks	Structural integrity intact. No action needed.	-
9	4111	2029-0371	2029-0372	ARTESIA BV	Broken with fracture & joint offset: 78'	Lining: MH to MH	263
10	4100	2029-0329	2029-0330	ARKANSAS ST	Fracture multiples: 196'	Structural integrity intact. No action needed.	-
11	4100	2029-0305	2029-0306	ALBURTIS AV	Hole: 195'	Structural integrity intact. No action needed.	-
12	4100	2029-0312	2029-0313	166TH ST	Multiple fractures: 295'	Structural integrity in tact. No action needed.	-

ARTESIA  
QUICK  
STRUCTURAL  
RATING  
(QSR)



**Legend**

**SMD Sanitary Sewers**

- QSR DEFECT GRADES**
- 1: MINOR
  - 2: MINOR TO MODERATE
  - 3: MODERATE
  - 4: SIGNIFICANT
  - 5: MOST SIGNIFICANT

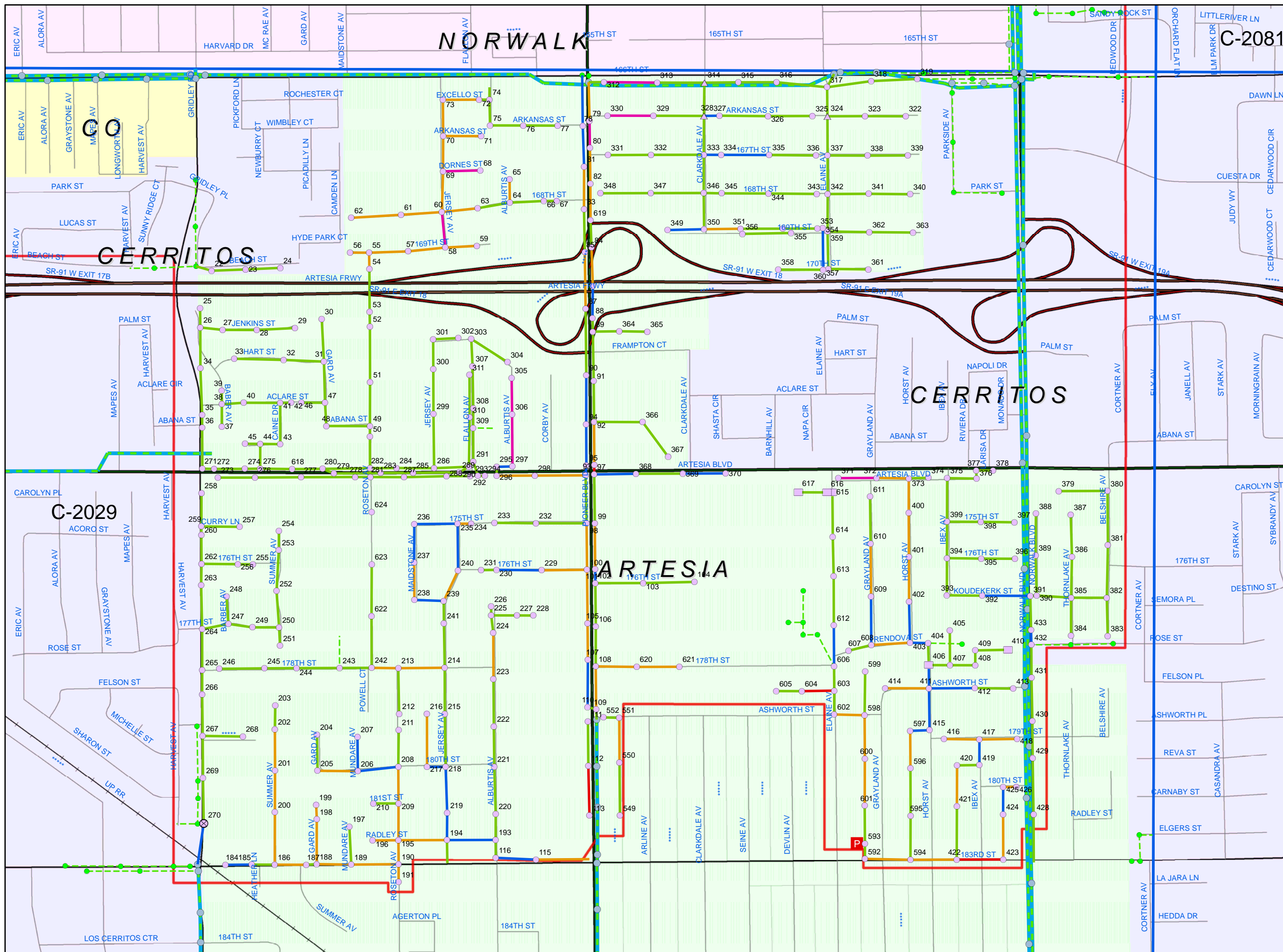
**SMD Manholes**

- Other
- Standard
- DROP
- Shallow
- Trap
- Siphon
- SMD Pump Stations
- SMD Treatment Plants

**Maintained by Others:**

- Trunk Sewerlines
- Non SMD Sanitary Sewers
- Non SMD Maintained MH
- SMD Operations Maps
- CCTV PROJECT AREA

This map is intended only for internal operations of the Los Angeles County Sewer Maintenance Districts. Los Angeles County expressly disclaims any liability for any inaccuracies which may be present in this map. Data contained in this map is produced in whole or part from the Thomas Bros. Maps® digital database. This map is copyrighted, and reproduced with permission granted, by Thomas Bros. Maps®. All rights reserved.



## ENCLOSURE 4:

Infrastructure Inspection Reports  
for Grades 4 and 5



**WinCan America, Inc.**  
 1730 Montano Road NE, Suite E  
 Albuquerque, NM 87107  
 Tel: (505) 341.0109, Fax: (505) 341.0133

## Inspection report

Date: <b>20081021</b>	P.O.#: <b>Y0TV0809B</b>	Weather: <b>1 Dry</b>	Surveyed By: <b>B.FUGATE</b>	section number: <b>1615</b>	PSR: <b>15381</b>
Total Pipe Length: <b>64</b>	Survey Customer: <b>LACDPW</b>	System Owner: <b>ART</b>	Clean Date: <b>10/21/2008</b>	Pre-Cleaned: <b>J Jetting</b>	Map Grid #: <b>2029</b>

Street: <b>PIONEER BV</b>	Flow Control: <b>N Not Controlled</b>	Start MH: <b>2029-0093</b>
City: <b>ART</b>	Year Renewed:	End MH: <b>2029-0097</b>
Location Code: <b>A Main Highway - Urban</b>	Tape/Media #:	pipe length: <b>51.7 ft</b>

Reason for inspection: <b>F Routine Assessment</b>	Dia/Height: <b>C Circular 8/8</b>
Use of Sewer: <b>SS Sanitary</b>	Material: <b>VCP</b> Pipe Length: <b>64</b>
Drain. Area: <b>0093/2029-0097/2029</b>	Lining Method:
	Category:

Remark:: **AGAINST THE FLOW**

1:150	position	observation	MPEG	photo	grade
	0.00	Downstream Manhole, Survey Begins 2029-0097		98	
	0.00	Water Level, 5 % of cross sectional area			
	0.00	Water Mark, 20 % of cross sectional area			M 2
	9.65	Hole Void Visible, from 11 to 01 o'clock, within 8 inch: YES	00:01:29	99, b	S 5
	10.55	Crack Multiple, from 08 to 04 o'clock, within 8 inch: YES	00:01:39	101, b	S 3
	11.60	Broken, from 09 to 03 o'clock, within 8 inch: YES	00:02:00	103, b	S 5
	51.70	Upstream Manhole, Survey Ends 2029-0093	00:04:19	105	

QSR	QMR	SPR	MPR	OPR	SPRI	MPRI	OPRI
5231	2100	13	2	15	4.33	2	3.75



## Inspection report

Date: <b>20081016</b>	P.O.#: <b>Y0TV0809B</b>	Weather: <b>1 Dry</b>	Surveyed By: <b>B.FUGATE</b>	section number: <b>1288</b>	PSR: <b>14975</b>
Total Pipe Length: <b>315</b>	Survey Customer: <b>LACDPW</b>	System Owner: <b>ART</b>	Clean Date: <b>10/16/2008</b>	Pre-Cleaned: <b>J Jetting</b>	Map Grid #: <b>2029</b>

Street: <b>183RD ST</b>	Flow Control: <b>N Not Controlled</b>	Start MH: <b>2029-0422</b>
City: <b>ART</b>	Year Renewed:	End MH: <b>2029-0423</b>
Location Code: <b>C Light Highway</b>	Tape/Media #:	pipe length: <b>135.9 ft</b>

Reason for inspection: <b>F Routine Assessment</b>	Dia/Height: <b>C Circular 8/8</b>
Use of Sewer: <b>SS Sanitary</b>	Material: <b>VCP</b> Pipe Length: <b>315</b>
Drain. Area: <b>0422/2029-0423/2029</b>	Lining Method:
	Category:

Remark:: **MSA PIPE BROKEN**

1:350	position	observation	MPEG	photo	grade
	0.00	Downstream Manhole, Survey Begins 2029-0422		153	
	0.00	Water Level, 5 % of cross sectional area			
	0.00	Water Mark, 5 % of cross sectional area			M 2
	9.15	Crack Multiple, from 03 to 09 o'clock, within 8 inch: YES	00:00:56	154, b	S 3
	20.00	Tap Factory Made Active, at 03 o'clock, 6", within 8 inch: YES	00:01:37	156	
	71.40	Tap Factory Made Active, at 03 o'clock, 6", within 8 inch: YES	00:03:15	157	
	71.95	Crack Multiple, from 04 to 08 o'clock, within 8 inch: YES	00:03:24	158, b	S 3
	110.50	Tap Factory Made Active, at 03 o'clock, 6", within 8 inch: YES	00:04:44	160	
	133.15	Crack Multiple, from 03 to 08 o'clock, within 8 inch: YES	00:05:44	161, b	S 3
	135.80	Broken Soil Visible, from 04 to 06 o'clock, within 8 inch: YES	00:06:13	163, b	S 5
	135.90	Survey Abandoned, Remark: CAMERA BLKD PIPE BROKEN	00:07:41	165, b	

QSR	QMR	SPR	MPR	OPR	SPRI	MPRI	OPRI
5133	2100	14	2	16	3.5	2	3.2





## Inspection report

Date: <b>20081016</b>	P.O.#: <b>Y0TV0809B</b>	Weather: <b>1 Dry</b>	Surveyed By: <b>B.FUGATE</b>	section number: <b>1295</b>	PSR: <b>14975</b>
Total Pipe Length: <b>349</b>	Survey Customer: <b>LACDPW</b>	System Owner: <b>ART</b>	Clean Date: <b>10/16/2008</b>	Pre-Cleaned: <b>J Jetting</b>	Map Grid #: <b>2029</b>

Street: <b>183TH ST</b>	Flow Control: <b>N Not Controlled</b>	Start MH: <b>2029-0423</b>
City: <b>ART</b>	Year Renewed:	End MH: <b>2029-0422</b>
Location Code: <b>C Light Highway</b>	Tape/Media #:	pipe length: <b>180.65 ft</b>

Reason for inspection: <b>F Routine Assessment</b>	Dia/Height: <b>C Circular 8/8</b>
Use of Sewer: <b>SS Sanitary</b>	Material: <b>VCP</b> Pipe Length: <b>315</b>
Drain. Area: <b>0423/2029-0422/2029</b>	Lining Method:
	Category:

Remark:: **MSA PIPE BROKEN**

1:450	position	observation	MPEG	photo	grade
	0.00	Upstream Manhole, Survey Begins 2029-0423		216	
	0.00	Water Level, 5 % of cross sectional area			
	0.00	Water Mark, 5 % of cross sectional area			M 2
	31.85	Tap Factory Made Active, at 09 o'clock, 6", within 8 inch: YES	00:02:16	217	
	66.55	Crack Multiple, from 11 to 08 o'clock, within 8 inch: YES	00:03:43	218, b	S 3
	72.80	Crack Multiple, from 04 to 08 o'clock, within 8 inch: YES	00:04:09	220, b	S 3
	76.95	Tap Factory Made Active, at 09 o'clock, 6", within 8 inch: YES	00:04:30	222	
	102.60	Crack Multiple, from 11 to 02 o'clock, within 8 inch: YES	00:05:44	223, b	S 3
	111.70	Crack Spiral, from 07 to 03 o'clock, within 8 inch: YES	00:06:11	225, b	S 2
	113.05	Tap Factory Made Active, at 09 o'clock, 6", within 8 inch: YES	00:06:25	227	
	120.40	Crack Longitudinal, at 04 o'clock, within 8 inch: YES	00:06:51	228, b	S 2
	138.20	Crack Multiple, from 04 to 10 o'clock, within 8 inch: YES	00:08:01	230, b	S 3
	147.30	Crack Multiple, from 04 to 10 o'clock, within 8 inch: YES	00:08:29	232, b	S 3
	150.70	Crack Longitudinal, at 04 o'clock, within 8 inch: YES	00:08:46	234, b	S 2
	173.75	Crack Multiple, from 04 to 08 o'clock, within 8 inch: YES	00:10:19	236, b	S 3
	175.15	Crack Multiple, from 04 to 02 o'clock, within 8 inch: YES	00:10:40	238, b	S 3
	178.25	Crack Multiple, from 04 to 06 o'clock, within 8 inch: YES	00:11:11	240, b	S 3
	180.05	Broken Soil Visible, from 07 to 08 o'clock, within 8 inch: YES	00:12:27	242, b	S 5
	180.65	Survey Abandoned, Remark: CAMERA BLKD PIPE BROKEN	00:13:38	244, b	

QSR	QMR	SPR	MPR	OPR	SPRI	MPRI	OPRI
5138	2100	35	2	37	2.92	2	2.85



## Inspection report

Date: <b>20081021</b>	P.O.#: <b>Y0TV0809B</b>	Weather: <b>1 Dry</b>	Surveyed By: <b>B.FUGATE</b>	section number: <b>1630</b>	PSR: <b>15280</b>
Total Pipe Length: <b>336</b>	Survey Customer: <b>LACDPW</b>	System Owner: <b>ART</b>	Clean Date: <b>10/21/2008</b>	Pre-Cleaned: <b>J Jetting</b>	Map Grid #: <b>2029</b>

Street: <b>POINEER BV</b>	Flow Control: <b>N Not Controlled</b>	Start MH: <b>2029-0112</b>
City: <b>ART</b>	Year Renewed:	End MH: <b>2029-0113</b>
Location Code: <b>A Main Highway - Urban</b>	Tape/Media #:	pipe length: <b>336.3 ft</b>

Reason for inspection: <b>F Routine Assessment</b>	Dia/Height: <b>C Circular 8/8</b>
Use of Sewer: <b>SS Sanitary</b>	Material: <b>VCP</b> Pipe Length: <b>336</b>
Drain. Area: <b>0112/2029-0113/2029</b>	Lining Method:
	Category:

Remark:: **NONE**

1:825	position	observation	MPEG	photo	grade
	0.00	Upstream Manhole, Survey Begins 2029-0112		215	
	0.00	Water Level, 5 % of cross sectional area			
	0.00	Water Mark, 5 % of cross sectional area			M 2
	64.95	Tap Factory Made Active, at 03 o'clock, 6", within 8 inch: YES	00:02:39	216	
	96.25	Hole Void Visible, at 02 o'clock, within 8 inch: YES	00:03:45	217, b	S 5
	97.65	Tap Factory Made Active, at 03 o'clock, 6", within 8 inch: YES	00:04:02	219	
	110.05	Crack Spiral, from 12 to 12 o'clock, within 8 inch: YES	00:04:29	220, b	S 2
	136.15	Tap Factory Made Capped, at 03 o'clock, 6", within 8 inch: YES	00:05:30	222	
	162.95	Tap Factory Made Active, at 03 o'clock, 6", within 8 inch: YES	00:06:31	223	
	222.95	Tap Factory Made Active, at 03 o'clock, 6", within 8 inch: YES	00:08:24	224	
	257.60	Fracture Spiral, from 12 to 12 o'clock, within 8 inch: YES	00:09:38	225, b	S 3
	267.35	Tap Factory Made Active, at 03 o'clock, 6", within 8 inch: YES	00:10:17	227	
	296.05	Crack Spiral, from 02 to 11 o'clock, within 8 inch: YES	00:11:25	228, b	S 2
	315.70	Tap Factory Made Capped, at 03 o'clock, 6", within 8 inch: YES	00:12:10	230	
	336.30	Downstream Manhole, Survey Ends 2029-0113	00:12:56	231	

QSR	QMR	SPR	MPR	OPR	SPRI	MPRI	OPRI
5131	2100	12	2	14	3	2	2.8



## Inspection report

Date: <b>20081015</b>	P.O.#: <b>Y0TV0809B</b>	Weather: <b>1 Dry</b>	Surveyed By: <b>B.FUGATE</b>	section number: <b>1409</b>	PSR: <b>14784</b>
Total Pipe Length: <b>220</b>	Survey Customer: <b>LACDPW</b>	System Owner: <b>ART</b>	Clean Date: <b>10/15/2008</b>	Pre-Cleaned: <b>J Jetting</b>	Map Grid #: <b>2029</b>

Street: <b>0</b>	Flow Control: <b>N Not Controlled</b>	Start MH: <b>2029-0603</b>
City: <b>ART</b>	Year Renewed	End MH: <b>2029-0604</b>
Location Code: <b>D Easement/Right of Way</b>	Tape/Media #:	pipe length: <b>214.1 ft</b>

Reason for inspection: <b>F Routine Assessment</b>	Dia/Height: <b>C Circular 8/8</b>
Use of Sewer: <b>SS Sanitary</b>	Material: <b>VCP</b> Pipe Length: <b>220</b>
Drain. Area: <b>0603/2029-0604/2029</b>	Lining Method:
	Category:

Remark:: **MH#'S REVERSED ON MAP**

1:525	position	observation	MPEG	photo	grade
	0.00	Downstream Manhole, Survey Begins 2029-0603		51	
	0.00	Water Level, 5 % of cross sectional area			M 2
	0.00	Water Mark, 5 % of cross sectional area			M 2
	0.50	Crack Spiral, from 12 to 12 o'clock, within 8 inch: YES	00:01:09	52, b	S 2
	7.75	Crack Spiral, from 12 to 12 o'clock, within 8 inch: YES	00:01:59	54, b	S 2
	11.05	Alignment Left, 45	00:02:26	56, b	M 4
	37.10	Roots Fine Joint, from 04 to 08 o'clock, within 8 inch: YES	00:03:41	58, b	M 1
	40.90	Roots Fine Joint, from 04 to 10 o'clock, within 8 inch: YES	00:03:55	60, b	M 1
	42.20	Hole, at 12 o'clock, within 8 inch: YES	00:04:16	62, b	S 5
	44.45	Roots Fine Joint, from 03 to 09 o'clock, within 8 inch: YES	00:04:41	64, b	M 1
	53.75	Tap Factory Made Active, at 10 o'clock, 4", within 8 inch: YES	00:05:09	66	
	55.15	Joint Offset Medium	00:05:18	67, b	S 1
	56.40	Tap Factory Made Active, at 12 o'clock, 4", within 8 inch: YES	00:05:29	69	
	60.00	Roots Fine Joint, from 10 to 01 o'clock, within 8 inch: YES	00:05:41	70, b	M 1
	66.90	Roots Fine Joint, from 01 to 02 o'clock, within 8 inch: YES	00:06:22	72, b	M 1
	70.10	Crack Longitudinal, at 03 o'clock, within 8 inch: YES	00:06:41	74, b	S 2
	103.30	Tap Factory Made Capped, at 03 o'clock, 4", within 8 inch: YES	00:07:56	76	
	109.70	Tap Factory Made Active, at 09 o'clock, 4", within 8 inch: YES	00:08:16	77	
	152.45	Tap Factory Made Capped, at 03 o'clock, 4", within 8 inch: YES	00:09:39	78	
	155.50	Tap Factory Made Capped, at 09 o'clock, 4", within 8 inch: YES	00:09:52	79	
	192.00	Tap Factory Made Capped, at 03 o'clock, 4", within 8 inch: YES	00:11:10	80	
	194.35	Tap Factory Made Capped, at 09 o'clock, 4", within 8 inch: YES	00:11:21	81	
	214.10	Upstream Manhole, Survey Ends 2029-0604	00:12:27	82	

QSR	QMR	SPR	MPR	OPR	SPRI	MPRI	OPRI
5123	4122	12	13	25	2.4	1.63	1.92



## Inspection report

Date: <b>20081023</b>	P.O.#: <b>Y0TV0809B</b>	Weather: <b>1 Dry</b>	Surveyed By: <b>B.FUGATE</b>	section number: <b>1640</b>	PSR: <b>15362</b>
Total Pipe Length: <b>185</b>	Survey Customer: <b>LACDPW</b>	System Owner: <b>ART</b>	Clean Date: <b>10/23/2008</b>	Pre-Cleaned: <b>J Jetting</b>	Map Grid #: <b>2029</b>

Street: <b>PIONEER BV</b>	Flow Control: <b>N Not Controlled</b>	Start MH: <b>2029-0079</b>
City: <b>ART</b>	Year Renewed:	End MH: <b>2029-0080</b>
Location Code: <b>A Main Highway - Urban</b>	Tape/Media #:	pipe length: <b>263.65 ft</b>

Reason for inspection: <b>F Routine Assessment</b>	Dia/Height: <b>C Circular 8/8</b>
Use of Sewer: <b>SS Sanitary</b>	Material: <b>VCP</b> Pipe Length: <b>185</b>
Drain. Area: <b>0079/2029-0080/2029</b>	Lining Method:
	Category:

Remark:: **MH#'S REVERSED ON MAP**

1:650	position	observation	MPEG	photo	grade
	0.00	Downstream Manhole, Survey Begins 2029-0080		33	
	0.00	Water Level, 5 % of cross sectional area			
	<u>0.00</u>	Water Mark, 5 % of cross sectional area			M 2
	<u>4.35</u>	Crack Multiple, from 09 to 03 o'clock, within 8 inch: YES	00:01:01	34, b	S 3
	<u>7.00</u>	Crack Multiple, from 08 to 05 o'clock, within 8 inch: YES	00:01:30	36, b	S 3
	<u>10.30</u> S1	Crack Multiple, from 05 to 03 o'clock, within 8 inch: YES, start	00:01:52	38, b	S 3
	<u>22.70</u> F1	Crack Multiple, from 05 to 03 o'clock, within 8 inch: YES, end	00:02:28	40	S 3
	<u>31.60</u>	Crack Longitudinal, at 03 o'clock, within 8 inch: YES	00:02:53	41, b	S 2
	<u>33.60</u>	Tap Factory Made Active, at 03 o'clock, 6", within 8 inch: YES	00:03:05	43	
	<u>52.35</u>	Crack Multiple, from 04 to 05 o'clock, within 8 inch: YES	00:03:51	44, b	S 3
	<u>61.50</u>	Crack Multiple, from 10 to 05 o'clock, within 8 inch: YES	00:04:21	46, b	S 3
	<u>63.35</u>	Tap Factory Made Capped, at 03 o'clock, 6", within 8 inch: YES	00:04:36	48	
	<u>84.20</u>	Tap Factory Made Capped, at 03 o'clock, 6", within 8 inch: YES	00:05:21	49	
	<u>114.10</u>	Tap Factory Made Active, at 02 o'clock, 6", within 8 inch: YES	00:06:20	50	
	<u>143.85</u>	Tap Factory Made Capped, at 03 o'clock, 6", within 8 inch: YES	00:07:21	51	
	<u>167.40</u>	Tap Factory Made Active, at 03 o'clock, 6", within 8 inch: YES	00:08:13	52	
	<u>177.30</u>	Fracture Multiple, from 07 to 04 o'clock, within 8 inch: YES	00:08:47	53, b	S 4
	<u>194.35</u>	Tap Factory Made Capped, at 03 o'clock, 6", within 8 inch: YES	00:09:35	55	
	<u>221.40</u>	Tap Factory Made Capped, at 03 o'clock, 6", within 8 inch: YES	00:10:41	56	
	263.65	Upstream Manhole, Survey Ends 2029-0079	00:12:29	57	

QSR	QMR	SPR	MPR	OPR	SPRI	MPRI	OPRI
4136	2100	24	2	26	3	2	2.89



## Inspection report

Date: <b>20080930</b>	P.O.#: <b>Y0TV0809B</b>	Weather: <b>1 Dry</b>	Surveyed By: <b>T.GLOCK</b>	section number: <b>873</b>	PSR: <b>15350</b>
Total Pipe Length: <b>252</b>	Survey Customer: <b>LACDPW</b>	System Owner: <b>ART</b>	Clean Date: <b>09/30/2008</b>	Pre-Cleaned: <b>J Jetting</b>	Map Grid #: <b>2029</b>

Street: <b>DORNES ST</b>	Flow Control: <b>N Not Controlled</b>	Start MH: <b>2029-0068</b>
City: <b>ART</b>	Year Renewed:	End MH: <b>2029-0069</b>
Location Code: <b>C Light Highway</b>	Tape/Media #:	pipe length: <b>268 ft</b>

Reason for inspection: <b>F Routine Assessment</b>	Dia/Height: <b>C Circular 8/8</b>
Use of Sewer: <b>SS Sanitary</b>	Material: <b>VCP</b> Pipe Length: <b>3ft</b>
Drain. Area: <b>0068/2029-0069/2029</b>	Lining Method:
	Category:

Remark:: **Cracks,Fractures**

1:675	position	observation	MPEG	photo	grade
	0.00	Upstream Manhole, Survey Begins 2029-0068	00:00:24	149	
	0.00	Water Level, 1 % of cross sectional area	00:02:39	150	
	<u>6.30</u>	Water Mark, 5 % of cross sectional area	00:02:47	151	M 2
	7.20	Tap Factory Made Active, at 09 o'clock, 6", within 8 inch: YES	00:02:59	152	
	<u>8.80</u>	Crack Multiple, from 08 to 04 o'clock, within 8 inch: YES	00:03:19	153, b	S 3
	9.80	Tap Factory Made Active, at 03 o'clock, 6", within 8 inch: YES	00:03:43	155	
	39.80	Tap Factory Made Active, at 03 o'clock, 6", within 8 inch: YES	00:04:44	156	
	42.20	Tap Factory Made Active, at 09 o'clock, 6", within 8 inch: YES	00:04:59	157	
	<u>77.70</u>	Crack Multiple, from 07 to 10 o'clock, within 8 inch: YES	00:06:14	158, b	S 3
	99.40	Tap Factory Made Active, at 09 o'clock, 6", within 8 inch: YES	00:07:06	160	
	<u>100.80</u>	Crack Multiple, from 07 to 10 o'clock, within 8 inch: YES	00:07:22	161, b	S 3
	105.30	Tap Factory Made Active, at 03 o'clock, 6", within 8 inch: YES	00:07:58	163	
	155.70	Tap Factory Made Active, at 09 o'clock, 6", within 8 inch: YES	00:09:20	164	
	161.40	Tap Factory Made Active, at 03 o'clock, 6", within 8 inch: YES	00:09:44	165	
	<u>190.10</u>	Fracture Multiple, from 06 to 09 o'clock, within 8 inch: YES	00:10:51	166, b	S 4
	215.10	Tap Factory Made Active, at 03 o'clock, 6", within 8 inch: YES	00:12:00	168	
	<u>233.60</u>	Crack Multiple, from 03 to 09 o'clock, within 8 inch: YES	00:13:03	169, b	S 3
	268.00	Downstream Manhole, Survey Ends 029-0069	00:15:08	171	

QSR	QMR	SPR	MPR	OPR	SPRI	MPRI	OPRI
4134	2100	16	2	18	3.2	2	3



## Inspection report

Date: <b>20081001</b>	P.O.#: <b>Y0TV0809B</b>	Weather: <b>1 Dry</b>	Surveyed By: <b>T.GLOCK</b>	section number: <b>1031</b>	PSR: <b>15341</b>
Total Pipe Length: <b>241</b>	Survey Customer: <b>LACDPW</b>	System Owner: <b>ART</b>	Clean Date: <b>10/01/2008</b>	Pre-Cleaned: <b>J Jetting</b>	Map Grid #: <b>2029</b>

Street: <b>JERSEY AV</b>	Flow Control: <b>N Not Controlled</b>	Start MH: <b>2029-0058</b>
City: <b>ART</b>	Year Renewed:	End MH: <b>2029-0060</b>
Location Code: <b>C Light Highway</b>	Tape/Media #:	pipe length: <b>231 ft</b>

Reason for inspection: <b>F Routine Assessment</b>	Dia/Height: <b>C Circular 8/8</b>
Use of Sewer: <b>SS Sanitary</b>	Material: <b>VCP</b> Pipe Length: <b>3ft</b>
Drain. Area: <b>0058/2029-0060/2029</b>	Lining Method:
	Category:

Remark:: **Cracks**

1:575	position	observation	MPEG	photo	grade
	0.00	Upstream Manhole, Survey Begins 2029-0060	00:00:16	88	
	0.00	Water Level, `10 % of cross sectional area	00:00:43	89	
	0.00	Water Mark, 25 % of cross sectional area	00:00:50	90	M 2
	38.30	Crack Multiple, from 12 to 05 o'clock, within 8 inch: YES	00:02:20	91, b	S 3
	55.20	Crack Multiple, from 10 to 02 o'clock, within 8 inch: YES	00:03:19	93, b	S 3
	79.90	Tap Factory Made Active, at 09 o'clock, 6", within 8 inch: YES	00:04:22	95	
	117.90	Crack Multiple, from 03 to 06 o'clock, within 8 inch: YES	00:05:35	96, b	S 3
	151.50	Crack Multiple, from 09 to 06 o'clock, within 8 inch: YES	00:07:19	98, b	S 3
	195.30	Fracture Multiple, from 10 to 02 o'clock, within 8 inch: YES	00:08:58	100, b	S 4
	215.40	Material Change, CAS Cast Iron	00:13:38	102, b	
	215.40	S1 Surface Spalling, from 09 to 03 o'clock, within 8 inch: YES, start	00:11:18	104, b	
	225.50	F1 Surface Spalling, from 09 to 03 o'clock, within 8 inch: YES, end	00:12:42	106, b	
	225.50	Material Change, VCP Vitrified Clay Pipe	00:13:03	108, b	
	231.00	Downstream Manhole, Survey Ends 2029-0058	00:14:59	110	

QSR	QMR	SPR	MPR	OPR	SPRI	MPRI	OPRI
4134	2100	16	2	18	3.2	2	3



## Inspection report

Date: <b>20081006</b>	P.O.#: <b>Y0TV0809B</b>	Weather: <b>1 Dry</b>	Surveyed By: <b>T.GLOCK</b>	section number: <b>1253</b>	PSR: <b>15103</b>
Total Pipe Length: <b>352</b>	Survey Customer: <b>LACDPW</b>	System Owner: <b>ART</b>	Clean Date: <b>10/06/2008</b>	Pre-Cleaned: <b>J Jetting</b>	Map Grid #: <b>2029</b>

Street: <b>ALBURTIS AV</b>	Flow Control: <b>N Not Controlled</b>	Start MH: <b>2029-0297</b>
City: <b>ART</b>	Year Renewed:	End MH: <b>2029-0306</b>
Location Code: <b>C Light Highway</b>	Tape/Media #:	pipe length: <b>318 ft</b>

Reason for inspection: <b>F Routine Assessment</b>	Dia/Height: <b>C Circular 8/8</b>
Use of Sewer: <b>SS Sanitary</b>	Material: <b>VCP</b> Pipe Length: <b>5ft</b>
Drain. Area: <b>0297/2029-0306/2029</b>	Lining Method:
	Category:

Remark:: **Cracks**

1:800	position	observation	MPEG	photo	grade
	0.00	Upstream Manhole, Survey Begins 2029-0306	00:00:17	77	
	0.00	Water Level, 2 % of cross sectional area	00:00:39	78	
	0.00	Water Mark, 10 % of cross sectional area	00:00:45	79	M 2
	0.00	Deposits Settled Gravel, 5 % of cross sectional area, at 06 o'clock, within 8 inch: YES	00:00:52	80	M 2
	8.80	Hole, from 01 to 02 o'clock, within 8 inch: YES	00:02:21	83, b	S 4
	9.40	Deposits Attached Encrustation, 2 % of cross sectional area, from 02 to 06 o'clock, within 8 inch: YES, Remark: from lateral	00:03:04	85, b	M 2
	9.40	Tap Break-In Active, at 02 o'clock, 4", within 8 inch: YES	00:01:29	81, b	
	14.90	Tap Factory Made Abandoned, at 09 o'clock, 6", within 8 inch: YES, Remark: Dirt inside	00:03:55	87	
	32.50	Tap Factory Made Capped, at 03 o'clock, 6", within 8 inch: YES	00:04:27	88	
	55.60	Tap Factory Made Capped, at 09 o'clock, 6", within 8 inch: YES	00:05:09	89	
	88.80	Tap Factory Made Capped, at 03 o'clock, 6", within 8 inch: YES	00:06:03	90	
	101.50	Tap Factory Made Capped, at 09 o'clock, 6", within 8 inch: YES	00:06:31	91	
	149.10	Crack Spiral, from 08 to 11 o'clock, within 8 inch: YES	00:07:53	92, b	S 2
	150.20	Tap Factory Made Capped, at 09 o'clock, 6", within 8 inch: YES	00:08:18	94	
	151.70	Crack Multiple, from 08 to 04 o'clock, within 8 inch: YES	00:08:32	95, b	S 3
	152.80	Tap Factory Made Capped, at 02 o'clock, 6", within 8 inch: YES	00:08:55	97	
	201.30	Tap Factory Made Capped, at 09 o'clock, 6", within 8 inch: YES	00:10:02	98	
	207.70	Crack Multiple, from 07 to 05 o'clock, within 8 inch: YES	00:10:24	99, b	S 3
	265.30	Tap Factory Made Active, at 09 o'clock, 6", within 8 inch: YES	00:11:57	101	
	318.00	Downstream Manhole, Survey Ends 2029-0297	00:13:39	102	

QSR	QMR	SPR	MPR	OPR	SPRI	MPRI	OPRI
4132	2300	12	6	18	3	2	2.57



## Inspection report

Date: <b>20081007</b>	P.O.#: <b>Y0TV0809B</b>	Weather: <b>1 Dry</b>	Surveyed By: <b>B.FUGATE</b>	section number: <b>1179</b>	PSR: <b>15048</b>
Total Pipe Length: <b>258</b>	Survey Customer: <b>LACDPW</b>	System Owner: <b>ART</b>	Clean Date: <b>10/07/2008</b>	Pre-Cleaned: <b>J Jetting</b>	Map Grid #: <b>2029</b>

Street: <b>ARTESIA BV</b>	Flow Control: <b>N Not Controlled</b>	Start MH: <b>2029-0371</b>
City: <b>ART</b>	Year Renewed:	End MH: <b>2029-0372</b>
Location Code: <b>C Light Highway</b>	Tap/Media #:	pipe length: <b>263.35 ft</b>

Reason for inspection: <b>F Routine Assessment</b>	Dia/Height: <b>C Circular 8/8</b>
Use of Sewer: <b>SS Sanitary</b>	Material: <b>VCP</b> Pipe Length: <b>258</b>
Drain. Area: <b>0371/2029-0372/2029</b>	Lining Method:
	Category:

Remark:: **AGAINST THE FLOW**

1:650	position	observation	MPEG	photo	grade
	0.00	Downstream Manhole, Survey Begins 2029-0372		127	
	0.00	Water Level, 5 % of cross sectional area			
	0.00	Water Mark, 5 % of cross sectional area			M 2
	17.00	Tap Factory Made Active, at 09 o'clock, 6", within 8 inch: YES	00:01:07	128	
	77.95	Fracture Multiple, from 01 to 09 o'clock, within 8 inch: YES	00:03:06	129, b	S 4
	116.45	Joint Offset Medium	00:04:39	131, b	S 1
	127.25	Tap Factory Made Active, at 09 o'clock, 6", within 8 inch: YES	00:05:09	133	
	168.30	Tap Factory Made Active, at 09 o'clock, 6", within 8 inch: YES	00:06:30	134	
	216.40	Tap Factory Made Active, at 09 o'clock, 6", within 8 inch: YES	00:08:01	135	
	259.25	Tap Factory Made Active, at 09 o'clock, 6", within 8 inch: YES	00:09:21	136	
	263.35	Upstream Manhole, Survey Ends 2029-0371	00:09:41	137	

QSR	QMR	SPR	MPR	OPR	SPRI	MPRI	OPRI
4111	2100	5	2	7	2.5	2	2.33





## Inspection report

Date: <b>20081001</b>	P.O.#: <b>Y0TV0809B</b>	Weather: <b>1 Dry</b>	Surveyed By: <b>B.FUGATE</b>	section number: <b>955</b>	PSR: <b>15012</b>
Total Pipe Length: <b>311</b>	Survey Customer: <b>LACDPW</b>	System Owner: <b>ART</b>	Clean Date: <b>10/01/2008</b>	Pre-Cleaned: <b>J Jetting</b>	Map Grid #: <b>2029</b>

Street: <b>ARKANSAS ST</b>	Flow Control: <b>N Not Controlled</b>	Start MH: <b>2029-0329</b>
City: <b>ART</b>	Year Renewed:	End MH: <b>2029-0330</b>
Location Code: <b>C Light Highway</b>	Tape/Media #:	pipe length: <b>346.7 ft</b>

Reason for inspection: <b>F Routine Assessment</b>	Dia/Height: <b>C Circular 8/8</b>
Use of Sewer: <b>SS Sanitary</b>	Material: <b>VCP</b> Pipe Length: <b>311</b>
Drain. Area: <b>0329/2029-0330/2029</b>	Lining Method:
	Category:

Remark:: **MH#'S REVERSED ON MAP**

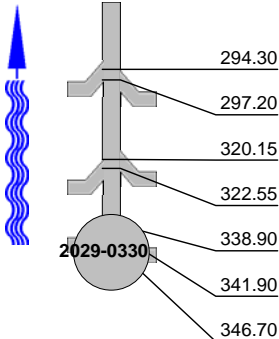
1:660	position	observation	MPEG	photo	grade
	0.00	Downstream Manhole, Survey Begins 2029-0329			12
	0.00	Water Level, 5 % of cross sectional area			
	<b>0.00</b>	<b>Water Mark, 5 % of cross sectional area</b>			<b>M 2</b>
	3.15	Tap Factory Made Active, at 03 o'clock, 6", within 8 inch: YES	00:00:48		13
	29.20	Tap Factory Made Active, at 09 o'clock, 6", within 8 inch: YES	00:01:48		14
	55.70	Tap Factory Made Active, at 03 o'clock, 6", within 8 inch: YES	00:02:49		15
	68.50	Tap Factory Made Active, at 09 o'clock, 6", within 8 inch: YES	00:03:22		16
	84.70	Tap Factory Made Active, at 09 o'clock, 6", within 8 inch: YES	00:03:58		17
	101.00	Tap Factory Made Active, at 03 o'clock, 6", within 8 inch: YES	00:04:35		18
	110.35	Tap Factory Made Active, at 09 o'clock, 6", within 8 inch: YES	00:04:59		19
	113.00	Tap Factory Made Active, at 03 o'clock, 6", within 8 inch: YES	00:05:11		20
	142.80	Tap Factory Made Capped, at 03 o'clock, 6", within 8 inch: YES	00:06:08		21
	162.40	Tap Factory Made Active, at 03 o'clock, 6", within 8 inch: YES	00:06:49		22
	171.90	Tap Factory Made Capped, at 09 o'clock, 6", within 8 inch: YES	00:07:18		23
	188.15	Tap Factory Made Capped, at 09 o'clock, 6", within 8 inch: YES	00:07:56		24
	<b>196.10</b>	<b>Fracture Multiple, from 12 to 03 o'clock, within 8 inch: YES</b>	<b>00:08:26</b>	<b>25, b</b>	<b>S 4</b>
	204.25	Tap Factory Made Active, at 03 o'clock, 6", within 8 inch: YES	00:09:01		27
	214.50	Tap Factory Made Active, at 03 o'clock, 6", within 8 inch: YES	00:09:31		28
	216.95	Tap Factory Made Capped, at 09 o'clock, 6", within 8 inch: YES	00:09:42		29
	240.10	Tap Factory Made Capped, at 09 o'clock, 6", within 8 inch: YES	00:10:37		30
	242.55	Tap Factory Made Capped, at 03 o'clock, 6", within 8 inch: YES	00:10:56		31
	262.20	Tap Factory Made Active, at 03 o'clock, 6", within 8 inch: YES	00:11:35		32
	264.75	Tap Factory Made Capped, at 09 o'clock, 6", within 8 inch: YES	00:11:47		33



## Inspection report

Date: <b>20081001</b>	P.O.#: <b>Y0TV0809B</b>	Weather: <b>1 Dry</b>	Surveyed By: <b>B.FUGATE</b>	section number: <b>955</b>	PSR: <b>15012</b>
Total Pipe Length: <b>311</b>	Survey Customer: <b>LACDPW</b>	System Owner: <b>ART</b>	Clean Date: <b>10/01/2008</b>	Pre-Cleaned: <b>J Jetting</b>	Map Grid #: <b>2029</b>

1:660	position	observation	MPEG	photo	grade		
	<u>294.30</u>	Tap Factory Made Capped, at 03 o'clock, 6", within 8 inch: YES	00:12:43	34			
	<u>297.20</u>	Tap Factory Made Capped, at 09 o'clock, 6", within 8 inch: YES	00:12:54	35			
	<u>320.15</u>	Tap Factory Made Capped, at 09 o'clock, 6", within 8 inch: YES	00:13:42	36			
	<u>322.55</u>	Tap Factory Made Active, at 03 o'clock, 6", within 8 inch: YES	00:13:52	37			
	<u>338.90</u>	Tap Factory Made Capped, at 03 o'clock, 6", within 8 inch: YES	00:14:30	38			
	<u>341.90</u>	Tap Factory Made Active, at 09 o'clock, 6", within 8 inch: YES	00:14:44	39			
	<u>346.70</u>	Downstream Manhole, Survey Ends 2029-0330	00:15:05	40			
QSR	QMR	SPR	MPR	OPR	SPRI	MPRI	OPRI
4100	2100	4	2	6	4	2	3





## Inspection report

Date: <b>20081006</b>	P.O.#: <b>Y0TV0809B</b>	Weather: <b>1 Dry</b>	Surveyed By: <b>T.GLOCK</b>	section number: <b>1256</b>	PSR: <b>15109</b>
Total Pipe Length: <b>245</b>	Survey Customer: <b>LACDPW</b>	System Owner: <b>ART</b>	Clean Date: <b>10/06/2008</b>	Pre-Cleaned: <b>J Jetting</b>	Map Grid #: <b>2029</b>

Street: <b>ALBURTIS AV</b>	Flow Control: <b>N Not Controlled</b>	Start MH: <b>2029-0305</b>
City: <b>ART</b>	Year Renewed	End MH: <b>2029-0306</b>
Location Code: <b>C Light Highway</b>	Tape/Media #:	pipe length: <b>307.2 ft</b>

Reason for inspection: <b>F Routine Assessment</b>	Dia/Height: <b>C Circular 8/8</b>
Use of Sewer: <b>SS Sanitary</b>	Material: <b>VCP</b> Pipe Length: <b>5ft</b>
Drain. Area: <b>0305/2029-0306/2029</b>	Lining Method:
	Category:

Remark:: **NONE**

1:750	position	observation	MPEG	photo	grade
	0.00	Upstream Manhole, Survey Begins 2029-0305	00:00:15	53	
	0.00	Water Level, 0 % of cross sectional area	00:00:50	54	
	7.50	Tap Factory Made Active, at 09 o'clock, 6", within 8 inch: YES	00:01:23	55	
	8.00	Water Level, 1 % of cross sectional area	00:01:35	56	
	8.00	<b>Water Mark, 5 % of cross sectional area</b>	<b>00:01:41</b>	<b>57</b>	<b>M 2</b>
	40.70	Tap Factory Made Abandoned, at 03 o'clock, 6", within 8 inch: YES, Remark: Dirt inside	00:02:26	58	
	58.40	Tap Factory Made Abandoned, at 09 o'clock, 6", within 8 inch: YES, Remark: Dirt inside	00:03:11	59	
	76.30	Tap Factory Made Capped, at 03 o'clock, 6", within 8 inch: YES	00:03:48	60	
	94.00	Tap Factory Made Abandoned, at 03 o'clock, 6", within 8 inch: YES, Remark: Dirt inside	00:04:27	61	
	147.80	Tap Factory Made Abandoned, at 09 o'clock, 6", within 8 inch: YES, Remark: Dirt inside	00:05:51	62	
	155.20	Tap Factory Made Abandoned, at 10 o'clock, 6", within 8 inch: YES, Remark: Dirt inside	00:06:22	63	
	168.00	Tap Factory Made Capped, at 03 o'clock, 6", within 8 inch: YES	00:06:50	64	
	185.90	Tap Factory Made Abandoned, at 03 o'clock, 6", within 8 inch: YES, Remark: Dirt inside	00:07:27	65	
	195.40	<b>Hole, at 11 o'clock, within 8 inch: YES</b>	<b>00:08:00</b>	<b>66, b</b>	<b>S 4</b>
	196.50	Tap Break-In Active, at 09 o'clock, 3", within 8 inch: YES	00:08:49	68, b	
	239.70	Tap Factory Made Abandoned, at 09 o'clock, 8", within 8 inch: YES, Remark: Dirt inside	00:10:16	70	
	263.00	<b>Tap Break-In Capped, at 09 o'clock, 4", within 8 inch: NO</b>	<b>00:11:04</b>	<b>71, b</b>	<b>M 2</b>
	283.00	Tap Factory Made Capped, at 09 o'clock, 6", within 8 inch: NO	00:11:51	73	
	285.60	Tap Factory Made Capped, at 03 o'clock, 6", within 8 inch: NO	00:12:08	74	
	287.30	Water Level, 5 % of cross sectional area	00:12:21	75	
	307.20	Downstream Manhole, Survey Ends 2029-0306	00:13:21	76	

QSR	QMR	SPR	MPR	OPR	SPRI	MPRI	OPRI
4100	2200	4	4	8	4	2	2.67



## Inspection report

Date: <b>20081027</b>	P.O.#: <b>Y0TV0809B</b>	Weather: <b>1 Dry</b>	Surveyed By: <b>B.FUGATE</b>	section number: <b>1667</b>	PSR: <b>15113</b>
Total Pipe Length: <b>361</b>	Survey Customer: <b>LACDPW</b>	System Owner: <b>ART</b>	Clean Date: <b>10/27/2008</b>	Pre-Cleaned: <b>J Jetting</b>	Map Grid #: <b>2029</b>

Street: <b>166TH ST</b>	Flow Control: <b>N Not Controlled</b>	Start MH: <b>2029-0312</b>
City: <b>ART</b>	Year Renewed:	End MH: <b>2029-0313</b>
Location Code: <b>A Main Highway - Urban</b>	Tape/Media #:	pipe length: <b>327.99 ft</b>

Reason for inspection: <b>F Routine Assessment</b>	Dia/Height: <b>C Circular 8/8</b>
Use of Sewer: <b>SS Sanitary</b>	Material: <b>VCP</b> Pipe Length: <b>361</b>
Drain. Area: <b>0312/2029-0313/2029</b>	Lining Method:
	Category:

Remark:: **FLOW GOES EAST**

1:800	position	observation	MPEG	photo	grade
	0.00	Upstream Manhole, Survey Begins 2029-0312		1	
	0.00	Water Level, 10 % of cross sectional area			
	0.00	Water Mark, 20 % of cross sectional area			M 2
	5.72	Tap Factory Made Active, at 03 o'clock, 6", within 8 inch: YES	00:01:06	2	
	8.03	Tap Factory Made Capped, at 09 o'clock, 6", within 8 inch: YES	00:01:35	3	
	43.77	Tap Factory Made Active, at 09 o'clock, 6", within 8 inch: YES	00:03:11	4	
	56.82	Tap Factory Made Active, at 03 o'clock, 6", within 8 inch: YES	00:03:48	5	
	76.40	Tap Factory Made Active, at 09 o'clock, 6", within 8 inch: YES	00:04:56	6	
	106.22	Tap Factory Made Active, at 03 o'clock, 6", within 8 inch: YES	00:08:41	7	
	115.95	Tap Factory Made Active, at 03 o'clock, 6", within 8 inch: YES	00:09:20	8	
	125.19	Tap Factory Made Active, at 09 o'clock, 6", within 8 inch: YES	00:09:55	9	
	146.17	Tap Factory Made Active, at 01 o'clock, 6", within 8 inch: YES	00:11:05	10	
	175.59	Tap Factory Made Active, at 09 o'clock, 6", within 8 inch: YES	00:12:19	11	
	205.20	Tap Factory Made Active, at 03 o'clock, 6", within 8 inch: YES	00:13:33	12	
	224.98	Tap Factory Made Active, at 09 o'clock, 6", within 8 inch: YES	00:14:27	13	
	251.39	Tap Factory Made Active, at 03 o'clock, 6", within 8 inch: YES	00:15:35	14	
	274.18	Tap Factory Made Active, at 09 o'clock, 6", within 8 inch: YES	00:16:38	15	
	283.61	Tap Factory Made Active, at 03 o'clock, 6", within 8 inch: YES	00:17:12	16	
	297.67	Fracture Multiple, from 12 to 03 o'clock, within 8 inch: YES	00:18:32	17, b	S 4
	299.57	Tap Factory Made Active, at 09 o'clock, 6", within 8 inch: YES	00:19:08	19	
	309.11	Tap Factory Made Active, at 03 o'clock, 6", within 8 inch: YES	00:19:53	20	
	327.99	Downstream Manhole, Survey Ends 2029-0313	00:21:54	21	

QSR	QMR	SPR	MPR	OPR	SPRI	MPRI	OPRI
4100	2100	4	2	6	4	2	3