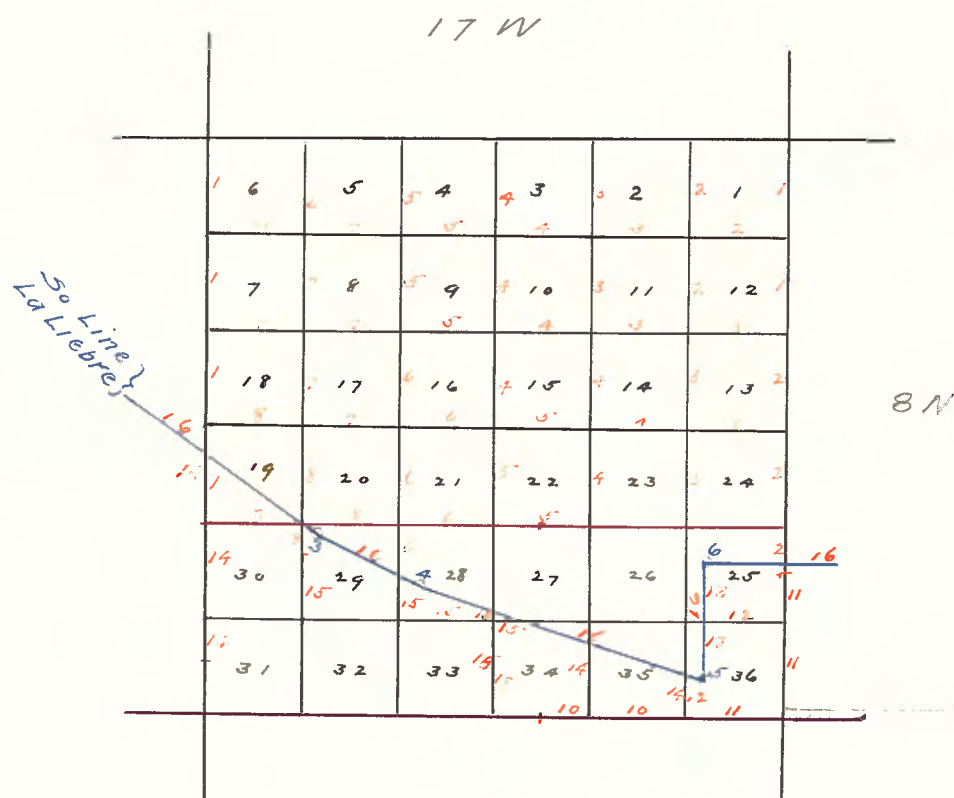


T 8 N., R 17 W.
and
South Line La Liebre.

Copied from notes loaned to County Surveyor
by
Mr. V. J. Rowan.

August 1918.

Norris, 1854-5.
Collins 1880
Duce 1903.



T 8 N, R 17 W., S.B.M.

Exterior by R. W. Norris, December 23, 1854.
Subdivisions by R. W. Norris, August 1, 1855.

Exterior lines of T 8 N, R 17 W., field notes of Exterior boundary according to survey made by Ralph W. Norris, Deputy Surveyor, under contract dated December 23, 1854.

WEST BOUNDARY.

From the corner to Townships 8 and 9 North, Ranges 17 and 18 West
I run

20 00 SOUTH along the east boundary of Sec 1. Var 14° 13' E.
25 50 To ravine, course N 60° W.
40 00 Across the same.
40 00 Set a post, charred and chalked for the $\frac{1}{4}$ Sec corner and raise a mound with trench and pits.
53 00 Leave hill and enter valley.
78 50 To hills brg S 40° E.
80 00 Set a post, Charred, chalked and notched for the corner to Secs 1, 12, 6 and 7 and raise a mound with trench and pits.

22 00 SOUTH on the east boundary of Section 12. Var 14° 13' E.
38 00 To ravine N 45° E.
40 00 Across the same.
40 00 Set a post charred and chalked for the $\frac{1}{4}$ section corner and raise a mound with trench and pits per instructions.
46 00 To ravine course N 40° E
62 00 Across the same.
80 00 Set a post charred, chalked and notched for the corner to Secs 12, 13, 7 and 18 and raise a mound with trench and pits.

SOUTH on the east boundary of Section 13. Var 14° 13' E.

(See C S 9027)
40 00 Set a post, charred and chalked for the $\frac{1}{4}$ section corner and raise a mound with trench and pits.
80 00 Set a post charred, chalked and notched for the corner of secs 13, 24, 18 and 19 and raise a mound with trench and pits.

24 50 SOUTH bet Secs 19 and 24. Var 14° 13' E. (See C S 9027)
36 00 Leave hills for the valley.
40 00 To road to Ft Tejon, course N 80° W.
40 00 Set a post, charred and chalked for the $\frac{1}{4}$ sec cor. and raise a mound with trench and pits.
A Lake bears N 69° W. about 30 chs dist.
60 00 To foot of mountain.
71 00 To scrub and scattering pine.
80 00 Set a post charred, chalked and notched for the corner to Secs 24, 25, 19 and 30 and raise a mound with trench and pits.
A Pine 20" dia brs S 34° E 108 lks.
I cannot survey further south on account of steep and brushy and rugged mountains.

EAST BOUNDARY.

From the corner to Tps 8 & 9 N, Rs 16 & 17 W. I run
40 00 SOUTH along the east bdy of Sec 1. Var 14° 13' E.
80 00 Set a post, charred and chalked for the $\frac{1}{4}$ sec cor and raise a md with trench and pits.
80 00 Set a post, charred and chalked and notched for the corner to Secs 1, 12, 6 and 7 and raise a md with trench and pits.

SOUTH on the east bdy of Sec 12. Var 14° 13' E.

40 00 Set a post charred and chalked for the $\frac{1}{4}$ sec cor and raise a md with trench and pits.

80 00 Set a post, charred, chalked and notched for the corner to Secs 12, 13, 7 and 18 and raise a md with trench and pits.

SOUTH on the east bdy of Sec 13. Var $14^{\circ} 13'$ E.

40 00 Set a post, charred and chalked for the $\frac{1}{4}$ sec cor and raise a md with trench.

45 60 John Philburn house brs S 21° E. 15 chs.

75 00 To road to Ft Tejon, course N 15° W.

80 00 Set a post, charred and chalked and notched to the corner for secs 13, 24, 18 and 19 and raised a md with trench and pits as instructed.

SOUTH on the east bdy of Sec 24. Var $14^{\circ} 13'$ E.

2 00 Enter steep hill.

18 00 Leave hill for valley.

40 00 Set a post, charred and chalked for the $\frac{1}{4}$ sec cor and raise a md with trench and pits.

47 50 Rim over hills isolated.

60 00 Leave hill for valley.

80 00 Set a post charred, chalked and notched for the corner to sections 24, 25, 19 and 30 and raise a mound with trench and pits.

SOUTH on the east bdy of section 25. Var $14^{\circ} 13'$ E.

2 00 Leave valley for steep hills.

16 00 To scattering pine.

35 00 Set a post charred, chalked and notched and raise a mound with trench and pits on the north side of ravine 80 feet wide and 80 feet deep at the foot of the mountain.

T 8 N, R 17 W. S.B.M.

Subdivisions.

Field notes of the subdivisions of T 8 N, R 17 W, according to survey made by Ralph W. Norris, Deputy Surveyor, under special instructions, dated August 1, 1855.

Subdivision commenced November 24, 1855, on the north boundary of township. From the corner to Sections 1, 2, 35 and 36 I run

SOUTH between Sections 1 and 2. Var 14° E.

40 00 Set a post, charred and chalked for the $\frac{1}{4}$ sec cor and raise a md with trench and pits.

80 00 Set a post, charred, chalked and notched for the corner to Secs 1, 2, 11 and 12 and raise mound with trench and pits.

EAST on a RANDOM line between Sections 1 and 12. Var $13^{\circ} 14'$ E.

40 00 Set post for temp $\frac{1}{4}$ sec corner.

80 20 Intersect the east bdy of tp 48 lks north of the corner to secs 1 and 12, from which corner I ran

WEST on a TRUE line between 1 and 12. Var $13^{\circ} 52'$ E.

40 10 Set a post, charred and chalked for the $\frac{1}{4}$ sec cor and raise md with trench and pits as instructed.

80 20 To corner to Secs 1, 2, 11 and 12.

SOUTH between Sections 11 and 12. Var $14^{\circ} 13'$ E.

40 00 Set a post charred and chalked for the $\frac{1}{4}$ sec cor and raise a mound with trench and pits.

80 00 Set a post charred, chalked and notched for the cor to Sec s 11, 12, 13 and 14 and raise a mound with trench and pits.

EAST on a RANDOM line bet secs 12 and 13. Var 14° 13' E.
40 00 Set a post for temp $\frac{1}{4}$ sec corner.
80 23 Intersect the east boundary of the tp 50 lks north of the corner to
Secs 12 and 13, from which corner I run
WEST on a true line bet secs 12 and 13. Var 13° 52' E
40 11 Set a post, charred and chalked for the $\frac{1}{4}$ sec cor, raise a mound
with trench and pits.
80 23 The corner to secs 11, 12, 13 and 14.

SOUTH bet Secs 13 and 14. Var 14° 13' E.
40 00 Set a post charred and chalked for the $\frac{1}{4}$ sec cor. and raise a md
with trench and pits.
41 00 Cross road to Ft Tejon, course S. 85° W.
45 00 To foot of hill brg N. 40° W.
56 00 To summit and over a succession of low hills.
80 00 Set a post charred, chalked and notched for the corner to secs 13,
14, 23 and 24, and raise a md with trench and pits, from which a
lone oak 42" dia brs S 35 $\frac{1}{2}$ ° E. 558 lks dist.

East on a RANDOM line bet Secs 13 and 24. Var 13° 14' E.
17 00 To ravine course N. 42° E.
29 00 Across same to foot of steep hill, which I ascend.
35 00 To summit of hill and descend.
40 00 Set a post for temp $\frac{1}{4}$ corner at foot of hill.
80 26 Intersect the east bdy of tp 58 lks north of the corner to secs 13
and 24, from which corner I run
WEST on a TRUE line bet secs 13 and 24. Var 13° 14' E.
40 13 Set a post charred and chalked for the $\frac{1}{4}$ section corner and raise
a mound with trench and pits.
80 26 The corner to sections 13, 14, 23 and 24.

SOUTH bet secs 23 and 24. Var 13° 14' E.
11 00 Scattering live oak and pine.
27 00 To ravine toward southeast.
27 00 Across the same.
40 00 Set a post charred and chalked for the $\frac{1}{4}$ sec corner, set a mound as
per instructions from which an oak 7 inches dia brs N 72° E, 70 lks.

SOUTH bet secs 2 and 3. Var 14° 13' E
40 00 Set a post charred and chalked for the $\frac{1}{4}$ sec corner and raise a md
with trench and pits.
80 00 Set a post, charred, chalked and notched for the corner to secs 2,
3, 10 and 11 and raise a mound for trench and pits.

EAST on a RANDOM line between secs 2 and 11. Var 14° 13' E.
40 00 Set a post for temp $\frac{1}{4}$ section corner.
80 00 Intersect N & S line 20 lks south of the corner to secs 1, 2, 11
and 12, from which corner I run
WEST on a TRUE line bet secs 2 and 11. Var 14° 22' E.
40 00 Set a post, charred and chalked for the $\frac{1}{4}$ corner and raise a mound
with trench and pits.
80 00 The corner to Secs 2, 3, 10 and 11.

SOUTH bet secs 10 and 11. Var 14° 13' E.
40 00 Set a post charred and chalked for the $\frac{1}{4}$ corner and raise a mound
with trench and pits, as per instructions.
80 00 Set a post charred and chalked for the corner to secs 10, 11, 14
and 15 and raise a mound for trench and pits.

EAST on a RANDOM line bet secs 11 and 14. Var 14° 13' E.
40 00 Set a post for temp $\frac{1}{4}$ sec corner.
80 32 Intersect N & S line 28 lks north of the corner to secs 11, 12, 13
and 14 from which corner I run
WEST on a TRUE line bet secs 11 and 14. Var 13° 57' E.
40 16 Set a post charred and chalked for the $\frac{1}{4}$ sec cor and raise a mound
with trench and pits.
80 32 The corner to secs 10, 11, 14 and 15.

SOUTH bet Secs 14 and 15. Var 13° 14' E.
 25 00 To low hill.
 40 00 Set a post charred and chalked for the $\frac{1}{4}$ sec cor and raise a mound with trench and pits.
 54 00 Cross road to Ft Tejon, brs S 63° W.
 77 50 To a grove of Oaks, extending 5 chs east, 5 chs west.
 80 00 Set a post charred, chalked and notched for the corner to secs 14, 15, 22 and 23.
 A pile of rocks from which an oak 14" dia brs N 77° W. 80 lks dist.
 An oak 15" dia brs N 21 $\frac{1}{2}$ ° E. 21 lks dist.
 EAST on a RANDOM line bet secs 14 and 23. Var 14° 13' E.
 3 00 To scattering cedar and scrub.
 5 00 To ravine, course N 70° -
 20 00 Across the same.
 37 00 To ravine, course N 30 $\frac{1}{2}$ ° E.
 40 00 Set a post for temp $\frac{1}{4}$ sec cor
 45 00 Across ravine.
 80 24 Intersect N & S line 18 lks north of the corner to secs 13 and 14, 23 and 24. From which course I ran
 WEST on a line bet Secs 14 and 23. Var 14° 05' E.
 40 12 Set a post charred and chalked for the $\frac{1}{4}$ sec cor and raise a mound with trench and pits.
 80 24 The corner to sections 14, 15, 22 and 23.
 SOUTH bet secs 22 and 23. Var 14° 13' E.
 3 00 To scattering cedar and oak;
 20 00 To hill becoming steep and rocky and the scrub so thick I can proceed no further. Therefore, I set a post properly marked in a md from which a cedar 5" dia brs N 12 $\frac{3}{4}$ ° E, 35 lks dist.
 A live oak 6" dia brs N 62° W, 72 lks dist.
 SOUTH bet secs 3 and 4. Var 14° 13' E.
 40 00 Set a post charred and chalked for the $\frac{1}{4}$ sec cor and raise a mound with trench and pits.
 80 00 Set a post charred, chalked and notched for the cor to secs 3, 4, 9 and 10. Raise the mound with trench and pits.
 EAST on a RANDOM line bet secs 3 and 10. Var 14° 13' E.
 40 00 Set a post for temp $\frac{1}{4}$ sec corner
 79 44 Intersect N & S line 12 lks south of the corner to secs 2, 3, 10 and 11, from which corner I ran
 WEST on a TRUE line bet secs 3 and 10. Var 14° 18' E.
 39 72 Set a post charred and chalked for the $\frac{1}{4}$ sec corner and raise md with trench and pits.
 79 44 To corner of secs 3, 4, 9 and 10.
 SOUTH bet secs 9 and 10. Var 14° 13' E.
 40 00 Set a post charred and chalked for the $\frac{1}{4}$ sec cor. with mound for trench and pits.
 72.52 To hills.
 80 00 To cor of secs 9, 10, 15 and 16.
 EAST on a RANDOM line bet secs 10 and 15. Var 14° 13' E.
 22 00 Leave the hills for the level plain.
 40 00 Set a post for temp $\frac{1}{4}$ sec corner.
 79 44 Intersect N & S line 32 lks south of the corner to secs 10, 11, 14 and 15 from which course I ran west
 WEST on a TRUE line bet secs 10 and 15. Var 14° 27' E.
 39 72 Set a post charred and chalked for the $\frac{1}{4}$ sec cor, and raise a mound with trench and pits.
 79 44 The corner to secs 9, 10, 15 and 16.
 SOUTH bet secs 15 and 16. Var 14° 13' E.
 37 50 Leave hills for plain
 40 00 Set post charred and chalked for the $\frac{1}{4}$ sec cor. raise a mound with trench and pits.
 77 50 Cross road to Ft Tejon, course S 57° W.
 80 00 Set a post charred, chalked and notched for corner of Secs 15, 16, 21 and 22 and raise mound for trench and pits.

(in edge of live oak and underbrush), from which an oak 14" dia
brs S $51\frac{1}{2}^{\circ}$ E. 322 lks dist.
An oak 12" dia brs S 12° W. 291 lks.

EAST on a RANDOM line bet secs 15 and 22. Var $14^{\circ} 13'$ E.
15 30 To stream of water 5 lks wide, course 30° E.
19 00 To hills.
40 00 Set a post for temp $\frac{1}{4}$ sec cor in some scattered cedar.
79 50 Intersect N & S line 19 lks to corner of sections 14, 15, 22 and 23,
from which corner I ran
WEST on a TRUE line bet secs 15 and 22. Var $14^{\circ} 21'$ E.
39 75 Set a post charred and chalked and mound for $\frac{1}{4}$ sec cor. from which
A cedar 8" dia brs N $80\frac{1}{2}^{\circ}$ E. 182 lks.
79 50 Corner to secs 15, 16, 21 and 22.

SOUTH bet secs 21 and 22. Var $14^{\circ} 13'$ E.
4 00 Leave oaks.
40 00 Set a post charred and chalked for the $\frac{1}{4}$ sec cor and raise a mound
with trench and pits.
80 00 Set a post charred, chalked and notched. Any depression for the
for the cor of secs 21, 22, 27 and 28, and raise mound with trenches
and pits, from which
A live oak 12" dia brs N 49° W. 128 lks dist.
A live oak 9" dia brs N $56\frac{1}{2}^{\circ}$ E. 314 lks.
A white oak 18" dia brs S $44\frac{1}{2}^{\circ}$ E. 750 lks dist.

EAST between secs 22 and 27. Var $14^{\circ} 13'$ E.
25 00 To scattering white oak.
32 39 I marked a white oak 18" dia. As instructed, at the foot of a very
steep mountain, covered with a dense growth of oak shrub. I cannot,
therefore, proceed further. The tree is marked with the range,
township and sections.

Not being able to run south from the corner of sections 21, 22, 27
and 28, I go to the corner to secs 4, 5, 32 and 33 and run
SOUTH bet secs 4 and 5. Var $14^{\circ} 13'$ E.
23 00 To low hill.
40 00 Set a post charred and chalked for the $\frac{1}{4}$ section corner and raised
a mound with trench and pits.
71 00 To ravine, course N 80° E.
78 50 Across same.
80 00 Set a post charred, chalked and notched on the corner to secs 4, 5,
8 and 9. Raised a mound with trench and pits.

EAST on a RANDOM line bet secs 4 and 9. Var $14^{\circ} 13'$ E.
40 00 Set a post for temp $\frac{1}{4}$ sec cor.
55 00 To valley or plane.
80 50 Intersect N & S line 12 lks south of the corner to secs 3, 4, 9 and
10, from which corner I ran
WEST on a TRUE line bet secs 4 and 9. Var $14^{\circ} 18'$ E.
40 25 Set a post charred and chalked for the $\frac{1}{4}$ sec corner and raise a md
with trench and pits.
80 50 To the corner of secs 4, 5, 8 and 9.

SOUTH bet secs 8 and 9. Var $14^{\circ} 13'$ E.
9 00 To ravine course N 75° E.
26 00 Across the same.
28 50 To ravine course N 62° E.
36 00 Across the same.
40 00 Set a post charred and chalked for the $\frac{1}{4}$ section cor and raise and
with trench and pits.
60 00 To ravine. course N 70° E.
70 00 Across the same.
80 00 Set a post charred, chalked and notched for the corner to secs 8, 9,
and 17 and raised a mound with trench and pits.

EAST on a RANDOM line bet secs 9 and 16. Var $14^{\circ} 13'$ E.
20 00 To ravine course N 45° E.
25 00 Across the same.
40 00 Set a post for temp $\frac{1}{4}$ sec cor.

64 00 To ravine course N 40° E.
 76 00 Across the same.
 80 63 Intersect N & S line 21 lks south of the corner to secs 9, 10, 15
 and 16, from which I ran
 WEST on a TRUE line to secs 9 and 16. Var 14° 22' E.
 40 31 Set a post charred and chalked for the $\frac{1}{4}$ sec cor. and raise a mound
 with trench and pits.
 80 63 The corner to secs 8, 9, 16 and 17.

 SOUTH bet secs 16 and 17. Var 14° 13' E.
 18 00 To ravine course 80° E.
 28 00 Across same.
 40 00 Set a post charred and chalked for the $\frac{1}{4}$ sec cor. and raise a mound
 with trench and pits.
 80 00 Set a post charred, chalked and notched for the corner of secs 16,
 17, 20 and 21(in edge of plane)raised a mound with trench and pits.

 EAST on a RANDOM line bet secs 16 and 21. Var 14° 13' E.
 36 50 Cross road to Ft Tejon, course S 77 $\frac{1}{2}$ ° W.
 40 00 Set a post to temp $\frac{1}{4}$ sec corner.
 55 00 Cross road to Ft Tejon course S 28° E.
 62 00 To the same road with it east for 8 chs and then leave it, course
 N 17° E.
 80 50 Intersect N & S line 17 lks south of the corner to secs 15, 16,
 21 and 22, from which I ran
 WEST on a TRUE line bet secs 16 and 21. Var 14° 21' E.
 40 25 Set a post charred and chalked for the $\frac{1}{4}$ sec cor and raise mound
 with trench and pits.
 80 50 The corner to secs 16, 17, 20 and 21.

 SOUTH bet secs 20 and 21. Var 14° 13' E.
 11 50 Across road to Ft Tejon. course S 62° W.
 17 00 To foot of steep hill.
 40 00 Set a post charred and chalked in mound for the $\frac{1}{4}$ sec cor. (in edge
 of oak scrub) from which a ~~white~~ white oak 14" dia brs S 66° E, 150
 lks dist. A white oak 15" dia brs S 3° W 198 lks dist. A white oak
 12" dia brs N 89 $\frac{1}{2}$ ° W, 307 lks dist.
 80 00 Set a post charred, chalked and notched for the corner to secs 21,
 28 and 29 and raise a mound with trench and pits.

 EAST on a RANDOM line bet secs 21 and 28. Var 14° 13' E.
 15 00 As I found it impossible to get through the thick oak shrub, I set
 a post charred, chalked and notched and raised a mound with trench
 and pits.

 SOUTH bet secs 28 and 29. Var 14° 13' E. (See C S 9027.)
 6 00 Leave scrub, 12 chs through the valley with scattering timber.
 40 00 Set a post charred and chalked for the $\frac{1}{4}$ sec cor. and raised a mound
 with trench and pits, from which
 A white oak 24" dia brs S 66° W, 138 lks dist.
 51 00 Leave timber.
 53 00 To foot of mountain.
 80 00 Center post, set a post charred, chalked and notched for the cor of
 secs 28, 29, 32 and 33, and raised a mound with trench and pits.
 This mound is on the side of a steep mountain and I could not go
 any further.

 SOUTH bet secs 5 and 6. Var 14° 13' E.
 25 00 To foot of low hills.
 40 00 Set a post charred and chalked for $\frac{1}{4}$ sec cor, and raise a mound
 with trench and pits.
 80 00 Set a post charred, chalked and notched at the cor of secs 5, 6,
 7 and 8 and raised a mound with trench and pits.

EAST on a RANDOM line bet secs 5 and 8. Var 14° 13' E.
 40 00 Set a post for temp $\frac{1}{4}$ sec corner.
 66 00 To ravine, course N 45° E.
 75 00 Across the same.
 79 55 Intersect the N & S line 20 lks north of the corner to secs 4, 5, 8 and 9, from which corner I run
 WEST on a TRUE line bet secs 5 and 8. Var 14° 4' E.
 39 77 Set a post charred and chalked for the $\frac{1}{4}$ sec cor. and raised a md with trench and pits.
 79 55 To corner of secs 5, 6, 7 and 8.

 WEST on a RANDOM line bet secs 6 and 7. Var 14° 13' E.
 40 00 Set a post for temp $\frac{1}{4}$ sec corner.
 59 00 To valley.
 78 00 To foot of hill.
 79 60 Intersect the west bdy of the tp, 50 lks south of the corner to secs 6 and 7, from which corner I run
 EAST on a TRUE line bet secs 6 and 7. Var 13° 52' E.
 39 61 Set a post charred and chalked for the $\frac{1}{4}$ section corner and raise a mound with trench and pits.
 79 60 The cor to secs 5, 6, 7 and 8.

 SOUTH bet secs 7 and 8. Var 14° 13' E.
 40 00 Set a post charred and chalked to the $\frac{1}{4}$ sec corner and raise a md with trench and pits.
 68 51 To ravine course N 65° E.
 77 51 Across the same.
 80 00 Set a post charred, chalked and notched for the cor to secs 7, 8, 17 and 18 and raise a mound with trench and pits.

 EAST on a RANDOM line bet secs 8 and 17. Var 14° 13' E.
 39 00 To ravine or depression, course N 40° E.
 40 00 Set a post for temp $\frac{1}{4}$ sec corner.
 45 00 Across ravine.
 79 67 Intersect the N & S line 40 lks north of the corner to secs 8, 9, 16 and 17, from which corner I run
 WEST on a TRUE line bet secs 8 and 17. Var 13° 56' E.
 39 83 Set a post charred and chalked for the $\frac{1}{4}$ sec corner and raised a mound with trench and pits.
 79 67 To corner to secs 7, 8, 17 and 18.

 WEST on a RANDOM line bet secs 7 and 18. Var 14° 13' E.
 17 50 To ravine, course 45° N to E.
 22 50 Across the same.
 40 00 Set a post for temp $\frac{1}{4}$ sec corner.
 79 71 Intersect the west bdy of the tp. 58 lks south of cor to secs 17 and 18, from which course I run
 EAST on a TRUE line bet secs 7 and 18. Var 13° 48' E.
 39 70 Set a post charred and chalked for the $\frac{1}{4}$ section corner and raised a mound with trench and pits.
 79 70 The corner to secs 7, 8, 17 and 18.

 SOUTH bet secs 17 and 18. Var 14° 13' E.
 40 00 Set a post charred and chalked for the $\frac{1}{4}$ sec cor and raised a md with trench and pits.
 47 00 To ravine, course N 60° E.
 53 00 Across the same.
 69 00 To ravine, course N 50° E.
 74 00 Across the same.
 80 00 Set a post charred, chalked and notched for the cor to secs 17, 18, 19 and 20, and raised a mound with trench and pits.

 EAST on a RANDOM line bet secs 17 and 20. Var 14° 13' E.
 40 00 Set a post for temp $\frac{1}{4}$ sec cor.
 79 60 Intersect N & S line 25 lks north of the cor to secs 16, 17, 20 & 21. From which corner I run
 WEST on a TRUE line bet secs 17 and 20. Var 14° 02' E.
 39.70 Set a post charred chalked to the $\frac{1}{4}$ sec cor and raised a mound with trench and pits.
 79 40 The corner to secs 17, 18, 19 and 20.

WEST on a RANDOM line bet secs 18 and 19. Var 14° 13' E.
 40 00 Set a post for temp $\frac{1}{4}$ sec corner.
 79 68 Intersect the west bdy of tp. 48 lks south of the corner to secs
 18 and 19. From which corner I run
 EAST on a TRUE line bet secs 18 and 19. Var -----
 39 68 Set a post charred and chalked for the $\frac{1}{4}$ sec cor and raised a md
 with trench and pits.
 79 68 The corner to secs 17, 18, 19 and 20.

 SOUTH bet secs 19 and 20. Var 14° 13' E. (See C S 9027)
 34 00 To valley, course E & W.
 36 00 Across road to Ft Tejon, course E & W.
 40 00 Set a post charred and chalked for the $\frac{1}{4}$ sec corner and raised a md
 with trench and pits.
 73 00 To steep hill and white oak timber.
 80 00 Set a post charred and chalked and notched for the corner to secs
 19, 20, 29 and 30, with trench and pits.
 A white oak 18" dia brs south 47° E., 102 lks.
 A white oak 15" dia brs N. 85 $\frac{1}{2}$ ° E., 71 lks.
 A white oak 18" dia brs N 32° W. 325 lks.

 EAST on a RANDOM line bet secs 20 and 29. Var 14° 13' E.
 40 00 Set a post for temp $\frac{1}{4}$ sec cor.
 79 55 Intersect N & S line 30 lks north of the corner to secs 20, 21, 28
 and 29, from which corner I run
 WEST on a TRUE line bet secs 20 and 29. Var 14° E.
 39 77 Set a post charred and chalked for the $\frac{1}{4}$ sec corner and raised a
 mound with trench and pits.
 79 55 The corner to secs 19, 20, 29 and 30.

 West on a Random line bet secs 19 and 30. Var 14° 13' E.
 40 00 Set a post for temp $\frac{1}{4}$ sec corner.
 79 60 Intersect the ~~XXXXXXXXXX~~ west boundary of the tp., 54 lks south of
 the corner to secs 19 and 30, from which corner I ran
 EAST on a TRUE line bet secs 19 and 30. Var 13° 50' E.
 39 60 Set a post charred and chalked for the $\frac{1}{4}$ sec corner and raised a md
 with trench and pits.
 79 60 The corner to secs 19, 20, 29 and 30.

 SOUTH bet secs 29 and 30. Var 14° 13' E. (See C S 9027)
 17 25 As I cannot survey further on account of the hills and the dense
 growth of oak shrub, I set a post charred, chalked and notched and
 raised a mound from which
 A pine 8" dia brs N 16 $\frac{1}{2}$ ° W. 104 lks.

NOTE:

Certificate as to the foregoing made by J. W. Mandeville,
 U. S. Surveyor General of California, December 15, 1857.

Field Notes
of the
Resurvey of a portion of the boundary line of
T 8 N, R 17 W.

As surveyed by James M. Duee, U. S. Deputy Surveyor,
under his contract dated October 19, 1901, and Sept.
25, 1906.

Survey commenced Jan 22, 1903 and completed Jan 26, 1903.

Copied from Notes loaned County Surveyor by Mr. V. J. Rowan.
August, 1918.

Resurvey of SOUTH boundary of T 8 N., R 17 W. S.B.M.

After diligent search and being unable to find any trace of old corner of Townships 7 and 8 North, Range 17 West, I go to the $\frac{1}{4}$ Section corner between Sections 3 and 34, on South boundary of township, the nearest known corner on said South boundary, which is a badly decayed post, marked and witnessed as described by the Surveyor General. Bearing tree is nearly dead. I re-established same by setting a quartz rock 18x14x7, 12 ins in the ground, marked $\frac{1}{4}$ S on north face, from which a live oak 10" dia brs S 12° W, 137 lks dist., marked $\frac{1}{4}$ S 3 B T. Old three-pronged white oak 10" dia brs N 86° W, 283 lks dist, marked $\frac{1}{4}$ S B T. From said $\frac{1}{4}$ sec cor I run EAST on a random line along S boundary of township, making diligent search at every 40 chs for old corner, and being unable to find any trace of the same, setting temporary corners, and at 203.54 chains intersect range line 6.18 chains S of closing corner of Townships 7 and 8 North, Range 16 West, which is a stone 6 inches above stone mound, marked CC on E face, with 6 grooves on N, S and E faces, and stone mound E of corner. Set temporary closing corner.

I return to the $\frac{1}{4}$ section corner between sections 3 and 34 on S bdy of township and run EAST on a true line between sections 3 and 34.

Descend.

- 9 81 Gulf 25 lks wide, course N E. Ascend.
 12 80 Low ridge, brs NE & SW. Descend through dense brush.
 31 20 Gulch 20 lks wide, small stream of water 2 lks wide. Course N. Ascend.
 38 00 Top of ridge, bears N & S. Descend.
 40 71 Being still unable, after diligent search to find any trace of old corner of Sections 2, 3, 34 and 35, I re-establish same by setting a rock 20x8x8 15 inches in the ground, for cor of sections 2, 3, 34 and 35, marked with two notches on the E and four notches on W edges from which
- A pine 6" dia brs S 39° E. 47 lks dist, marked T 7 N R 17 W S 2 BT.
 - A pine 15" dia brs N 26 $\frac{1}{4}$ ° E. 110 lks dist, marked T 8 N R 17 W S 35 BT.
 - A white oak 16" dia brs S 22° W. 53 lks dist, marked T 7 N R 17 W S 3 BT.
 - A white oak 24" dia Brs N 73° W. 104 lks dist, marked T 8 N R 17 W S 34 B T.

EAST on a TRUE line bet Secs 2 and 35.

- 9 71 Ravine 12 lks wide, course NE. Ascend through brush and scattered pine timber
 14 31 Rocky point, brs N. Descend.
 16 55 Gulch 10 lks wide, course NW. Ascend.
 25 30 Top of spur, brs NE. Descend.
 37 80 Gulch 20 lks wide, course NE. Ascend.
 39 30 Spur brs N. Descend.
 40 71 Being still unable after diligent search to find any trace of old $\frac{1}{4}$ sec cor, I re-establish same by setting a granite stone 20x7x7 15" in the ground for $\frac{1}{4}$ section cor, marked $\frac{1}{4}$ on N face, from which
- A white oak 12" dia brs N 60 $\frac{1}{2}$ ° W. 88 lks dist, marked $\frac{1}{4}$ S 35 BT.
 - A pine 24" dia brs S 77° W. 39 lks dist marked $\frac{1}{4}$ S 2 BT.
- 43 35 Gulch 25 lks wide, course N 20° W. Ascend.
 50 10 Top of ridge brs NE & SW. Descend.
 67 65 Main canyon with small stream of water 21 lks wide, course NE. Ascend.
 81 42 Being still unable after diligent search to find any trace of old corner, I re-establish same by setting a granite stone 20x5x7, 15" in the ground for cor of Secs 1, 2, 35 & 36, marked with 1 notch on E and 5 notches on W edge, from which
- A pine 8" dia brs S 18 $\frac{1}{2}$ ° E. (18 $\frac{1}{2}$ °) 72 lks dist, marked T 7 N R 17 W S 1 BT.

45 90 A wire fence brs N 43° E, and S 43° W.
 52 15 Center of gulch 10 lks wide, course NW. Ascend.
 62 50 Top of spur, brs N. Descend.
 67 20 Enter gulch 15 lks wide, course N. Ascend.
 69 17 Intersect line of Rancho La Liebre, 10.15 chs N. 0° 17' W., of $\frac{1}{2}$ mile corner, and at a point of intersection I set a granite stone 18x7x7 12" in ground for closing cor of secs 25 and 36, marked CC on E, and LL on W face, with 5 grooves on N and 1 groove on S face, in a mound of stone.

James M. Duee, U.S. Dep Surveyor.

Resurvey of a portion of the boundary lines of Rancho La Liebre.

Jan 27, 1903, at Station LL No. 6 on boundary of Rancho La Liebre, I set of 34° 45' N on the latitude arc; 18° 35' S on the Declination arc and determine a meridian with the solar, at 8h 10m A.M. 1 m t.

From Station No. 6 on the boundary line of Rancho La Liebre, which is a redwood post 2"x4", 18" above the ground, marked and described by the Surveyor General, I run

SOUTH on a RANDOM line along said boundary, setting temporary corners at 40.80 chs and at

99 90 A point 60 lks west of Station No. 5, which is a buckeye tree, marked and witnessed as described by the Surveyor General, thence I run

N. 0° 17' W. on a TRUE line along said boundary. Descend.

0 50 Bottom of depression, course W. Ascend.
 14 78 Wire fence brs NE & SW.
 15 80 Top of spur brs NW. Descend.
 20 00 Center of wash 25 lks wide, course NW. Ascend.
 40 00 Set a granite stone 22x12x9 17" in the ground for $\frac{1}{2}$ mile corner, marked $\frac{1}{2}$ M on S, LL on W face, in a mound of stone.
 46 60 Top of spur, brs NW. Descend.
 57 40 Center of gulch 10 lks wide, course W. Ascend.
 73 50 Top of spur, SW, still ascend.
 80 00 Set a granite stone 24x14x10 18" in the ground for 1 mile corner, marked 1 M on S, LL on W face and raised a mound of stone.
 85 00 Top of main spur, brs ~~E~~ West. Descend
 99 90 Station No. 6.

69 70 At Station LL 6 on boundary of Rancho La Liebre, I run on a RANDOM line EAST along boundary line of Rancho La Liebre, and at a point 1.30 chs N of closing corner of sections 25 and 30, described in these notes, I run

N. 88° 56' W., on a TRUE line along said boundary. Ascend.

3 80 Corner of a wire fence, E & S.
 12 95 Top of spur brs N. Descend.
 17 80 Center of gulch 10 lks wide course N. Ascend.
 22 75 chs Top of spur brs N. Descend
 28 75 Center of gulch 5 lks wide, course N. Ascend.
 29 71 Set a granite stone 20x12x9 for $\frac{1}{2}$ mile corner, marked $\frac{1}{2}$ N on W. and LL on N face, in a mound of stone
 32 95 Top of spur brs N. Descend.
 40 75 chs Center of gulch 50 lks wide, course NE. Ascend.
 48 60 Top of spur brs N. Descend.
 69 71 Station No. 6.

January 28, 1903.

James M. Duee,

U.S. Dep. Surveyor.

Extract from notes of George S. Collins, under his contract of
October 21, 1879. In T 8 N, R 17 W.

Retracement of the West boundary of T 8 N, R 17 W.

As all traces to corners to sections 30, 31, 25 and 36 have disappeared, in order to re-establish same, I go to the $\frac{1}{4}$ sec cor bet sections 31 and 36, which I find standing and agreeing with field notes, and run

NORTH bet secs 31 and 36. Var $14^{\circ} 30'$ E.
Descend.

6 50 Cross ravine with springs and ascend. A house brs E. 2 chs dist.
40 00 Set temp cor to secs 30, 31, 25 and 36, and continue NORTH bet
Sections 25 and 30.
70 00 To N side of small lake, extending about 1 ch W. and $2\frac{1}{2}$ chs E.
20 00 Summit of ridge brs E & W. descend
40 00 After diligent search, being unable to find old corner, I set temp
 $\frac{1}{4}$ sec cor.
80 10 To corner to sections 24, 25, 19 and 30, which I find nearly de-
stroyed. I rebuilt the same and set posts 4" sq in md of earth
for corner to secs 24, 25, 19 and 30, from which bears
A pine 24" dia marked R 17 W T 8 N S 30 BT; S 34° E. 108 lks.
From this corner I run

SOUTH on a TRUE line bet Secs 25 and 30, Var $14^{\circ} 25'$ E.
Set a post 4" dia in earth mound
Set post 4" ~~dia~~ sq 1 ft in earth
arth mound and pits for cor to sections . .
and 31

From the corner to secs 24, 25, 19 and 30, I run

NORTH bet secs 19 and 24. Var $14^{\circ} 25'$ E.
Descend.

7 50 Enter valley E & W.
8 75 Cross gulch 10 lks wide NE.
33 75 Cross road, brs E & W.
40 00 Being unable, after diligent search to find old corner, I set post
4" dia in earth mound with pits for $\frac{1}{4}$ corner.
59 13 Intersect South boundary of the Rancho La Liebre,
109 12 N $53\frac{3}{4}^{\circ}$ W. of Corner No. 3 of the final survey of said Rancho, and
being unable to find any trace of corner called for in said survey,
I set post 4" sq. in earth mound with pits for corner to fractional
Secs 19 and 24.

From the corner to Secs 35 and 36 on the South boundary, I run

NORTH bet secs 35 and 36, Var $14^{\circ} 25'$ E.
Descend

4 50 Cross gulch 10 lks wide, NE and ascend.
33 37 Intersect South boundary of Rancho La Liebre,
18 28 chains N $71\frac{1}{4}^{\circ}$ W. of corner No. 5 of final survey of said Rancho and
set post 4" sq. in earth mound with pits.

NORTH bet Secs 34 and 3

NORTH bet Secs 34 and 35. Var 14° 25' E.
Ascend.

34 75 Summit of spur brs NE & SW. Descend.
40 00 Set post 4" dia in earth mound and pit for $\frac{1}{4}$ sec cor.
60 40 Intersect South boundary of Rancho La Liebre, set post 4" sq in
earth md with pits, for corner to fractional secs 34 and 35, from
which corner I run SOUTH 71 $\frac{1}{4}$ ° E. 84 chs to cor to fractional Secs
35 and 36.

NORTH bet Secs 33 and 34. Var 14° 25' E.
Descend.

20 00 Cross gulch 10 lks wide, course NW.
40 00 Set post 4" dia in stone md for $\frac{1}{4}$ sec cor.
68 50 Enter valley brs E & W.
80 00 Set post 4" sq in stone md for cor to Secs 27, 28, 33 and 34.

EAST bet Secs 27 and 34. Var 14° 25' E.
22 00 Intersect South boundary of Rancho La Liebre. Set post 4" sq
in stone md for cor to fractional secs 27 and 34, from which cor
I run S 71 $\frac{1}{4}$ ° E. along south boundary of said Rancho
60 71 chs to cor of fractional secs 34 and 35.

NORTH bet Secs 27 and 28. Var 14° 25' E.
7 50 Intersect South boundary of Rancho La Liebre, set post 4" sq in stone
md for cor to fractional secs 27 and 28, from which cor I run S 71 $\frac{1}{4}$ °
E. along south bdy of said Rancho 22.56 chs to cor of fractional
Secs 27 and 28.

From a post 4" sq, in a stone md, the cor to Secs 28, 29, 32 and 33,
I run
EAST on a RANDOM line bet Secs 28 and 33. Var 14° 30' E.
5 00 Leave Canada brs NE & SW. and ascend
40 00 Set temp $\frac{1}{4}$ sec cor.
60 00 Descend, entering canada brs SE & NW.
74 80 Cross gulch 10 lks wide, course NE.
79 82 Intersect N & S lines, 33 lks N of cor to secs 27, 28, 33 and 34,
from which cor I run
N. 89° 46' W. on a TRUE line bet Secs 28 and 33.
39 91 Set post 4" dia with stone md for $\frac{1}{4}$ sec cor.
79 82 The cor to Secs 28, 29, 32 and 33.

Retracing NORTH bet Secs 28 and 29, through canada.
1 75 Cross gulch 10 lks wide, course NE.
6 50 Leave canada brs NE & SW and ascend.
36 00 Intersect South Bdy of Rancho La Liebre, 8.40 chs N. 61 $\frac{1}{2}$ ° W. of Cor
No. 4 of said Rancho. Set post 4" sq in earth md with pits for
cor to fractional secs 28 and 29

From the cor to Secs 29, 30, 31 and 32, I run
NORTH bet secs 29 and 30. Var 14° 25' E. Descend.

4 50 Cross head of ravine 10 lks wide course E and ~~downward~~ ascend.
18 50 Top of spur brs NE & SW and ascend.
34 10 Cross gulch 10 lks wide, course NE and ascend.
40 00 Set post 4" dia in earth md with pits for $\frac{1}{4}$ sec cor.
80 00 Intersect South boundary of Rancho La Liebre and being unable after
diligent search to find old cor, I set post 4" sq in earth md and
pits for cor to Secs 19, 20, 29 and 30 from which cor I run S. 53°
45' E., 9.30 chs to Corner No. 3 of final survey of said Rancho.

Sept 16, 1880. Note: These field notes are not signed nor sworn
to by anyone.

Field notes of Boundary Ro. La Liebre.

Beginning at a stone mound on the top of the Sierra west of and near "Fine Springs", where a post is marked LL No. 1.

Thence according to the true meridian the variation of the magnetic needle being $14^{\circ} 15'$ E.
SOUTH 2° E.

5 00 Cross creek, course S 45° W.
40 00 Enter brush.
60 00 Leave brush and crosses small creek, course S 20° W.
75 00 Enters Canada de los Ozos,
80 00 Ascends hill.
~~126 27~~
126 27 To post marked LL No. 2. from which a White oak tree 18" dia brs South, 5.95 chs dist, marked LL No. 2 BT, and a large spring of water brs N 52° E, 7.67 chs dist. Station.

Thence over rolling hills S. $53^{\circ} 45'$ E.

10 00 Crosses small canada, course N
42 00 Enters timber.
47 00 Crosses gulch, course N.
58 00 To timbered gulch.
62 50 Leaves timber.
68 00 To timbered ravine, course NE.
81 50 A small house in Canada de los Ozos brs N. 46° E.
88 00 To timbered ravine, course N.
95 00 Small house in Canada de los Ozos brs N 35° E.
118 00 Enters scattering Pine and Oak timber.
149 50 Crosses Canada 2 chs wide, course NE.
183 00 To dry arroyo, thence along same at
200 00 Leave arroyo, bearing to the East.
207 00 Leaves scattering timber.
240 00 To Canada, course N 55° E.
251 00 Crosses road, course NE & SW.
253 00 Leaves Canada.
310 00 Enters valley, course E & W.
383 00 Crosses telegraph line course N 81° E. & S 81° W.
440 00 Leaves valley and enters low hills.
486 34 To gray granite stone marked LL No. 3, from which a White oak tree 10" dia brs S $85^{\circ} 15'$ E, 57 lks dist., and another 1' dia brs N $45^{\circ} 45'$ W, 53 lks dist, both marked LL No. 3 & BT. Station.

Thence over low brushy hills near the base of the Sierra known as the "Cuestade Bellota"
S $61^{\circ} 30'$ E.
40 00 Enters oak timber.
90 00 To oak post marked LL No. 4, Station, from which a white oak tree 8" dia brs N $56^{\circ} 30'$ W. 3.79 chs dist Marked LL & BT.

Thence over low rolling hills covered with scattering oak timber S $71^{\circ} 15'$ E.
262 30 To a Buckeye tree 10" dia marked LL No. 5 Station, from which a White oak tree 30" dia brs N $13^{\circ} 15'$ W. 90 lks dist.

Thence over brushy hills, NORTH
100 00 To Post marked LL No. 6 Station.

Thence over brushy hills EAST.
140 00 To Post in Canada marked LL No. 7 Station.

Thence NORTH.
 75 00 Leaves brushy hills.
 108 00 Crosses Ft Tejon Road, course N 83° 30' W.
 108 75 Crosses telegraph line, course N 75° W. & S 75° E.
 160 00 To Post on $\frac{1}{4}$ Section corner on Section line between Sections 17
 and 18, T 8 N, R 16 W, marked LL No. 8 Station.
 Thence over level plain through Section 18.
 WEST. at
 40 00 "Cow" springs brs S 20° W.
 80 00 Intersects Range line 40 chs N of corner to Sections 13, 18, 19 &
 24, from this point "Cow" springs brs S 18° E. THENCE
 Through the center of Sections 13, 14, 15, and 16, T 8 N, R 17 W.
 377 00 To Post marked LL No. 9 Station, 23 chs E of $\frac{1}{4}$ Section corner, on
 Section line between Sections 16 and 17.
 Thence NORTH over level plain through Sections 16, 9, 4 and 33.
 280 00 To post on Section line between Sections 28 and 33, marked LL No. 10
 Station.
 Thence EAST
 57 00 To Post on corner to Sections 27, 28, 33 and 34, Marked LL No. 11
 Station.

(These are the notes of the Patent Boundary of Rancho
 La Liebre as surveyed by Geo. H. Thompson in 1862,
 See Patent Book 1 pages 536 to 543 inclusive.)

Copied from Notes loaned to County Surveyor by Mr. V. J. Rowan.

August 1918.