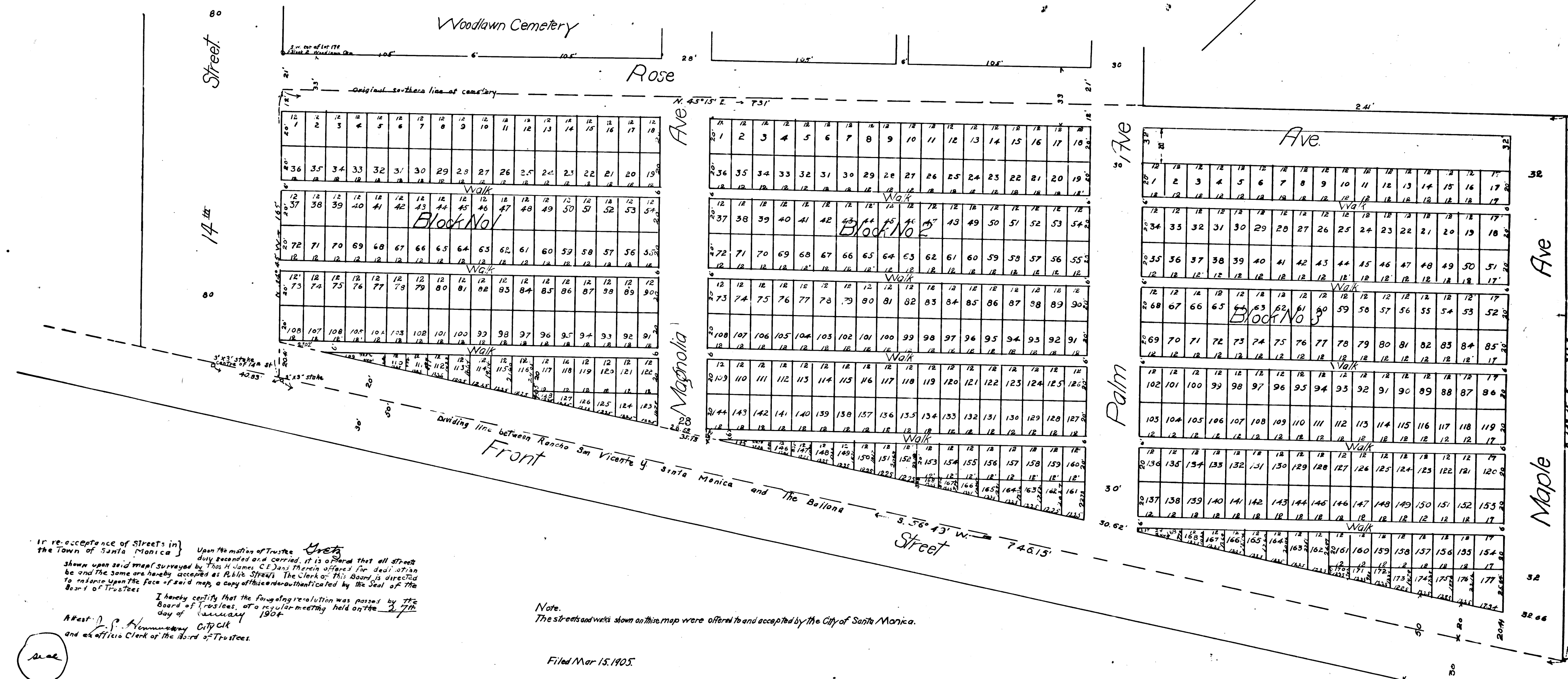
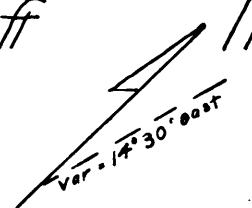


MAP OF
 Woodlawn Cemetery Addition No 1
 Situated in the City of Santa Monica
 County of Los Angeles State of California
 Jan 28 1904 Scale 1 in = 30 ft Thos James C.E.



If re-acceptance of Streets in the Town of Santa Monica } Upon the motion of Trustee Yates duly recorded and carried, it is ordered that all streets shown upon said map surveyed by Thos H James C.E. and therein offered for dedication be and the same are hereby accepted as Public Streets. The Clerk of this Board is directed to endorse upon the face of said map a copy of this order authenticated by the Seal of the Board of Trustees.

I hereby certify that the foregoing resolution was passed by the Board of Trustees at a regular meeting held on the 27th day of January 1904.

Attest: D. P. Almon City Clerk and an official Clerk of the Board of Trustees.

Note: The streets and walks shown on this map were offered to and accepted by the City of Santa Monica.

Filed Mar 15, 1905.

R.F. 222

Vac of Por. of Rose Ave. D: 25-184 Spec Ord. 45
 Vac. Magnolia Ave. Por. Palm & Rose Aves. - D: 88-203 Ord 624
 Por. Palm Ave Vac. - E: 94-186, O.R. 32009-64