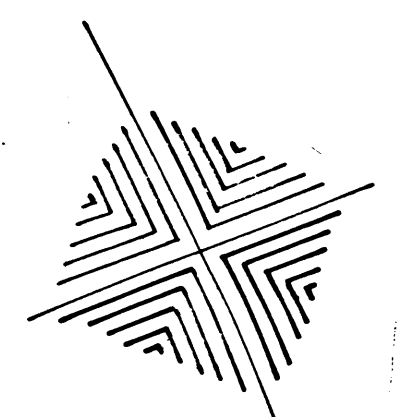
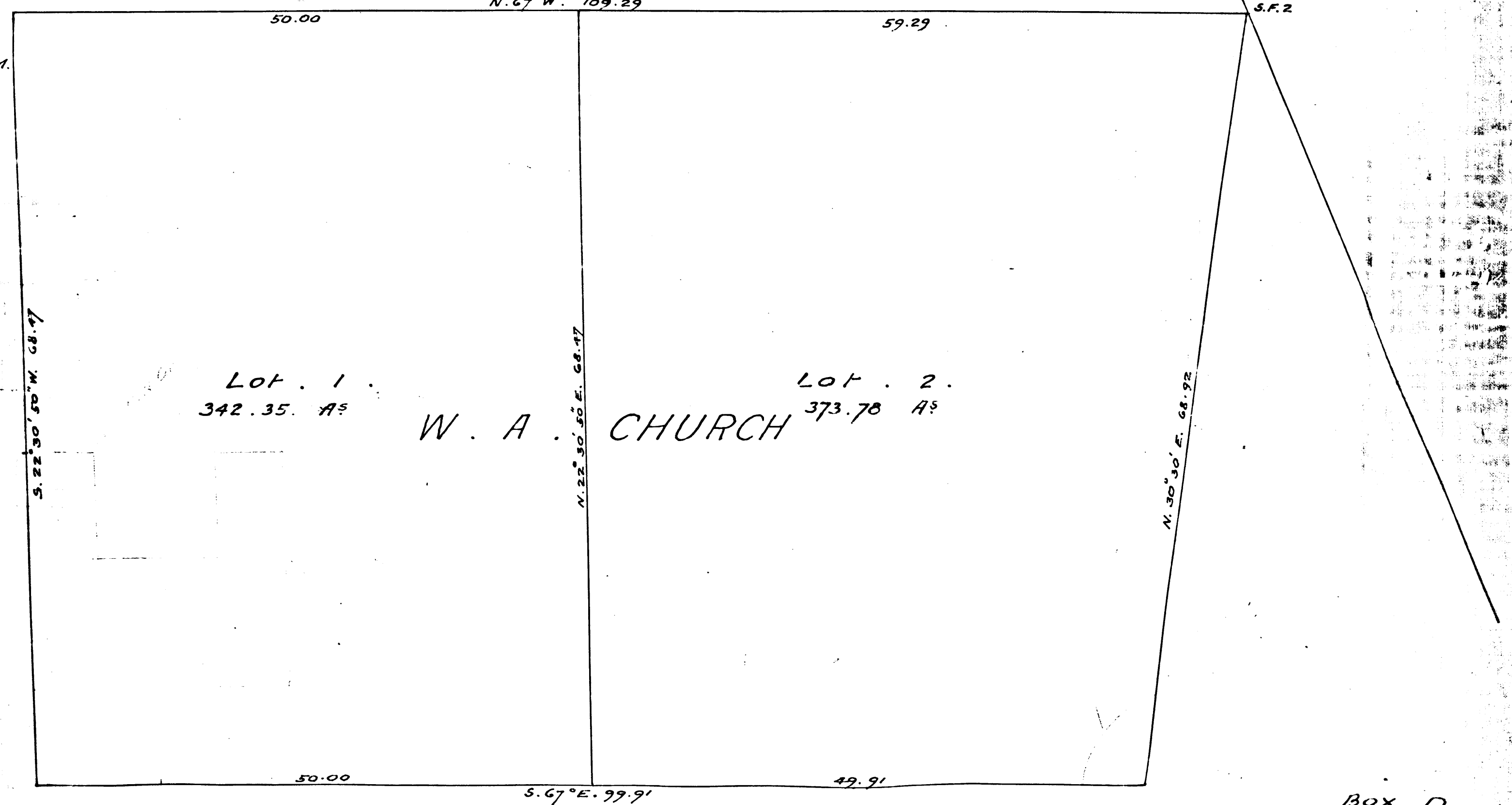


MAP
of Land owned by
W. A. CHURCH
in the
San Francisquito Rancho
made in May 1880
by
E. T. WRIGHT
County Surveyor
N. 67° W. 109.29



Filed at the Request
of W. A. Church.
June 5th 1880 at 3.7 P.M.



Lot . 1 .
342.35 AS

W. A. CHURCH

Lot . 2 .
373.78 AS

scale 10 Chains per inch

Box . D.
Recorder's O.

or lot 1 deduced to City of Monrovia D: 33-8 O.R. 2196-219
ation of certain traveled highways - D: 46-190 O.R. 11056-74

R.F. 509