

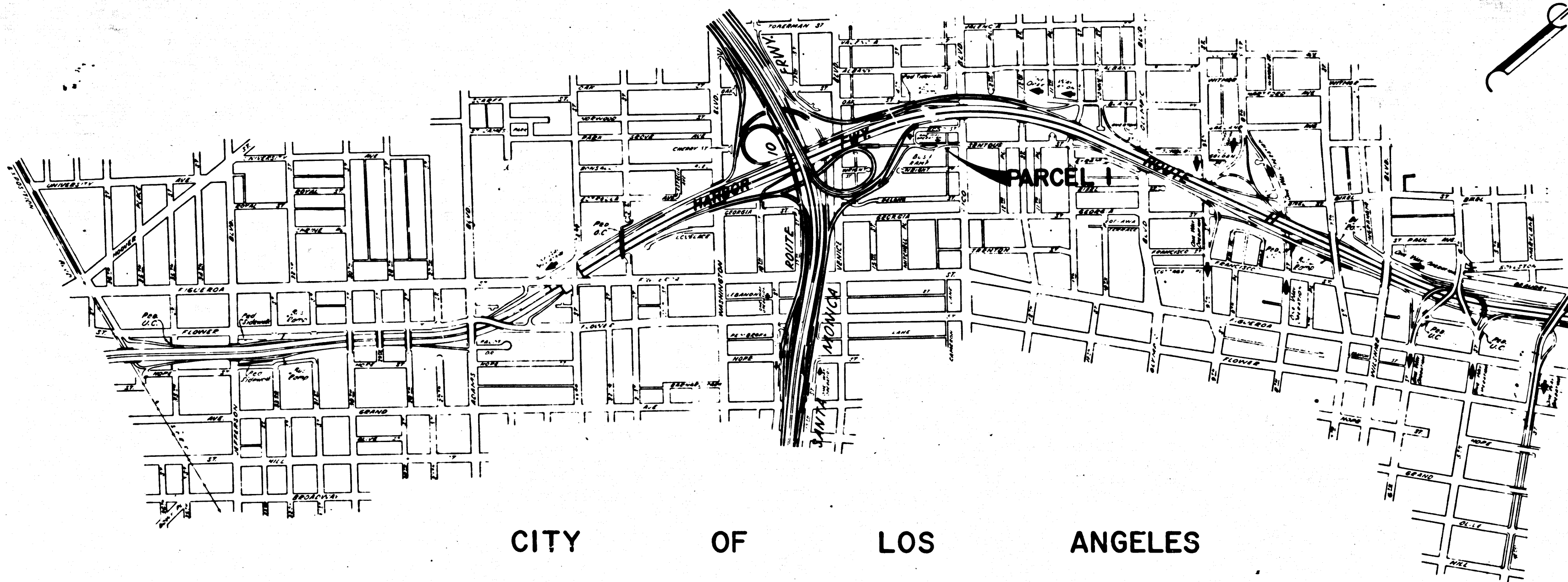
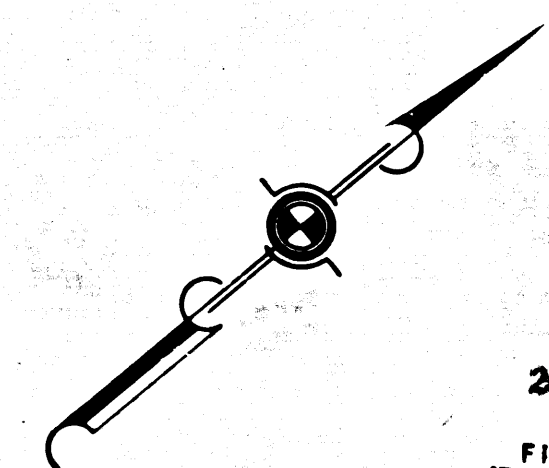
DIST	COUNTY	ROUTE	POST MILES	SHEET NO.	TOTAL SHEETS
07	L.A.	11	21.7	1	2

Al Hummelhoek
 DEPUTY DISTRICT ENGINEER
 DATE Dec. 3, 1969

STATE OF CALIFORNIA
 TRANSPORTATION AGENCY
 DEPARTMENT OF PUBLIC WORKS
 DIVISION OF HIGHWAYS

RIGHT OF WAY MAPS OF
 STATE HIGHWAY

In the City of Los Angeles at an Alley Turn-around
 near Pico Blvd.



CITY OF LOS ANGELES

2664
 FILED
 AT REQUEST OF
 DEPT. OF PUBLIC WORKS
 DEC. 4, 1969
 2 AM
 3 PM
 IN BOOK 8
 AT PAGE 72
 OF STATE HIGHWAY MAPS
 LOS ANGELES COUNTY, CALIF.
 RAY E. LEE
 COUNTY RECORDER
 BY *CSA*
 Deputy *Free*

STATE OF CALIFORNIA
 TRANSPORTATION AGENCY
 DEPARTMENT OF PUBLIC WORKS
 DIVISION OF HIGHWAYS
 PROPOSED RELINQUISHMENT

SCALE
 0 600 1200 1800 2400

DR'N BY <i>L.W.K.</i>	R/W MAP NO. <i>F-1358</i>
C'LC BY <i>G.D.W.</i>	REF. MAP NO. <i>135.15</i>
CK'D BY <i>G.H.</i>	REL-745
REVISED	

COUNTY ENGINEER'S COPY

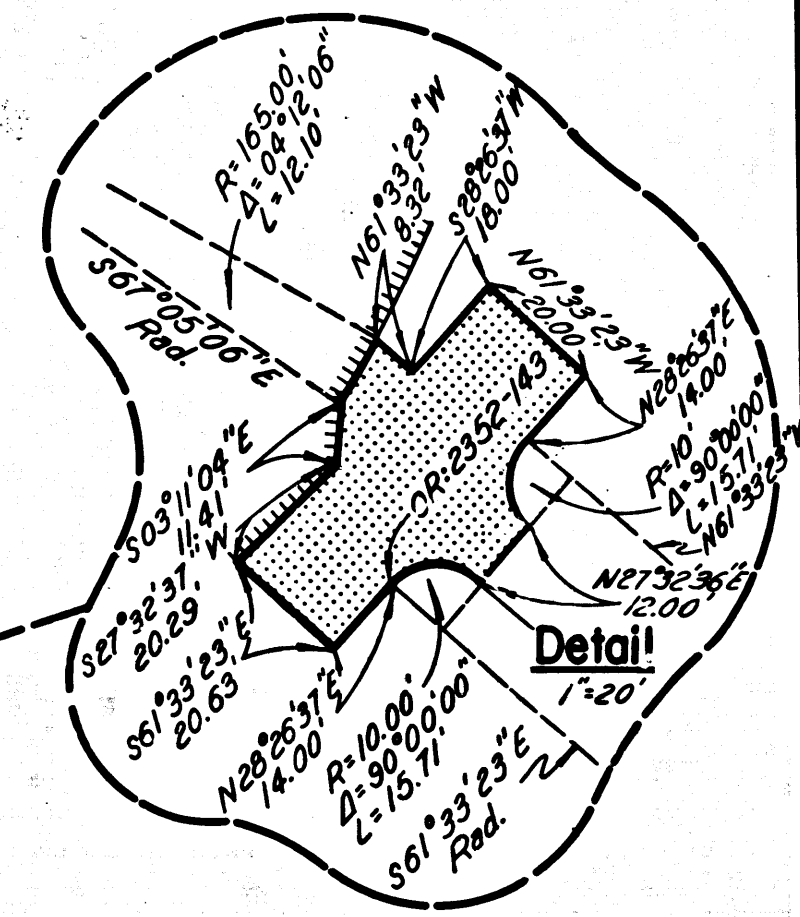
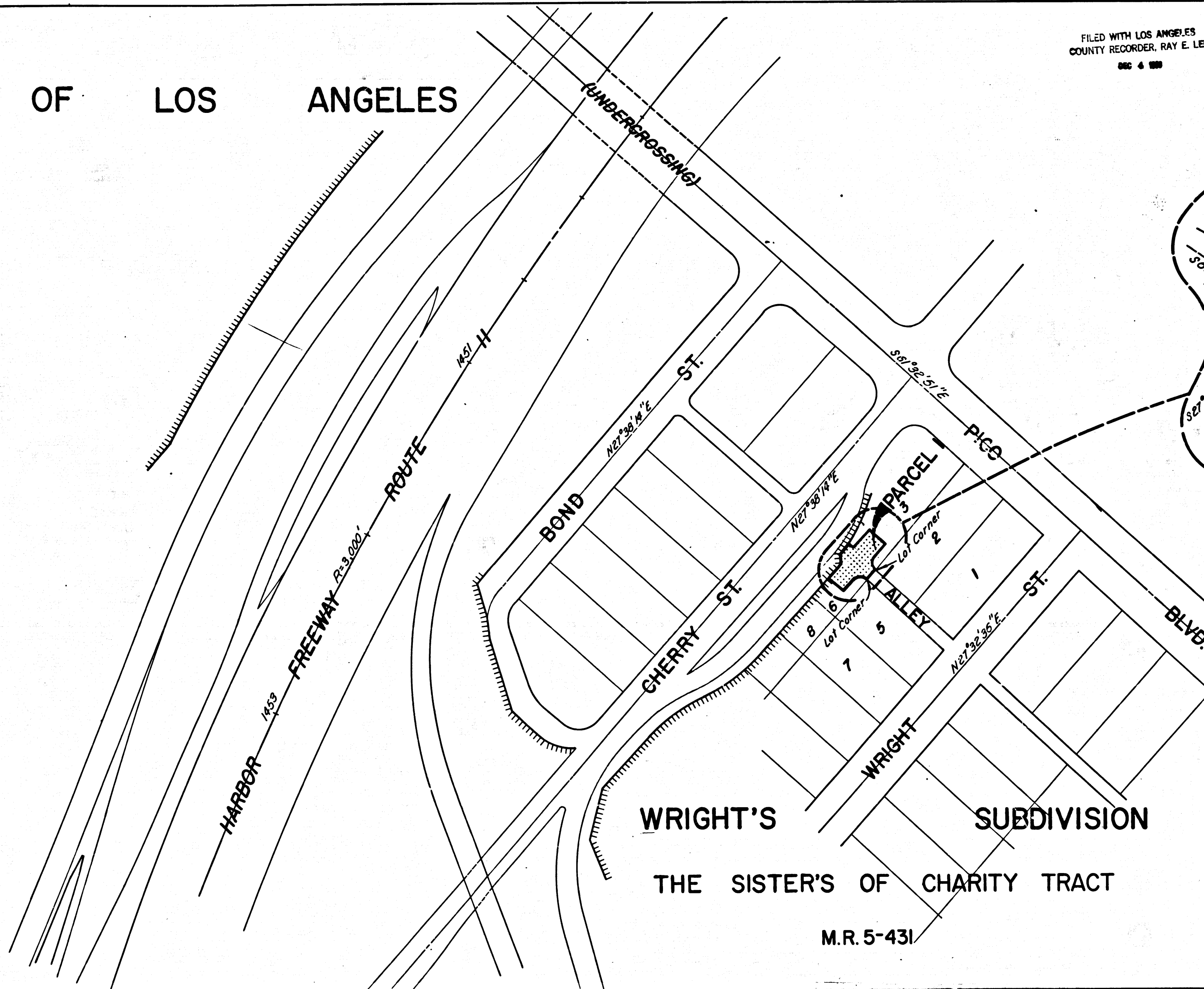
302 8/7-73

DIST	COUNTY	ROUTE	POST MILES	SHEET NO.	TOTAL SHEETS
07	L.A.	11	217	2	2

FILED WITH LOS ANGELES COUNTY RECORDER, RAY E. LEE
DEC 4 1969

R.W.F.M.
SENIOR HIGHWAY ENGINEER
DATE Dec. 3, 1969

CITY OF LOS ANGELES



WRIGHT'S SUBDIVISION

THE SISTER'S OF CHARITY TRACT

M.R. 5-431

STATE OF CALIFORNIA
TRANSPORTATION AGENCY
DEPARTMENT OF PUBLIC WORKS
DIVISION OF HIGHWAYS

PROPOSED RELINQUISHMENT

0 50 100 150 200

AREA TO BE RELINQUISHED SHOWN THUS

ACCESS PROHIBITED

DR'N BY <i>L.W.K.</i>	R/W MAP NO. <i>F-1358</i>
C'LC BY <i>G.D.W.</i>	REF MAP NO. <i>135.15</i>
C'D BY <i>G.H.</i>	REL-745
REVISED <i>10-28-59</i>	

COUNTY ENGINEER'S COPY