

| DIST | COUNTY | ROUTE | POST MILES | SHEET NO. | TOTAL SHEETS |
|------|--------|-------|------------|-----------|--------------|
| 07 | L.A. | 605 | 13.8-14.0 | 1 | 3 |

STATE OF CALIFORNIA
 TRANSPORTATION AGENCY
 DEPARTMENT OF PUBLIC WORKS
 DIVISION OF HIGHWAYS

A. L. Hummel
 DEPUTY DISTRICT ENGINEER
 October 27, 1970
 DATE

1898

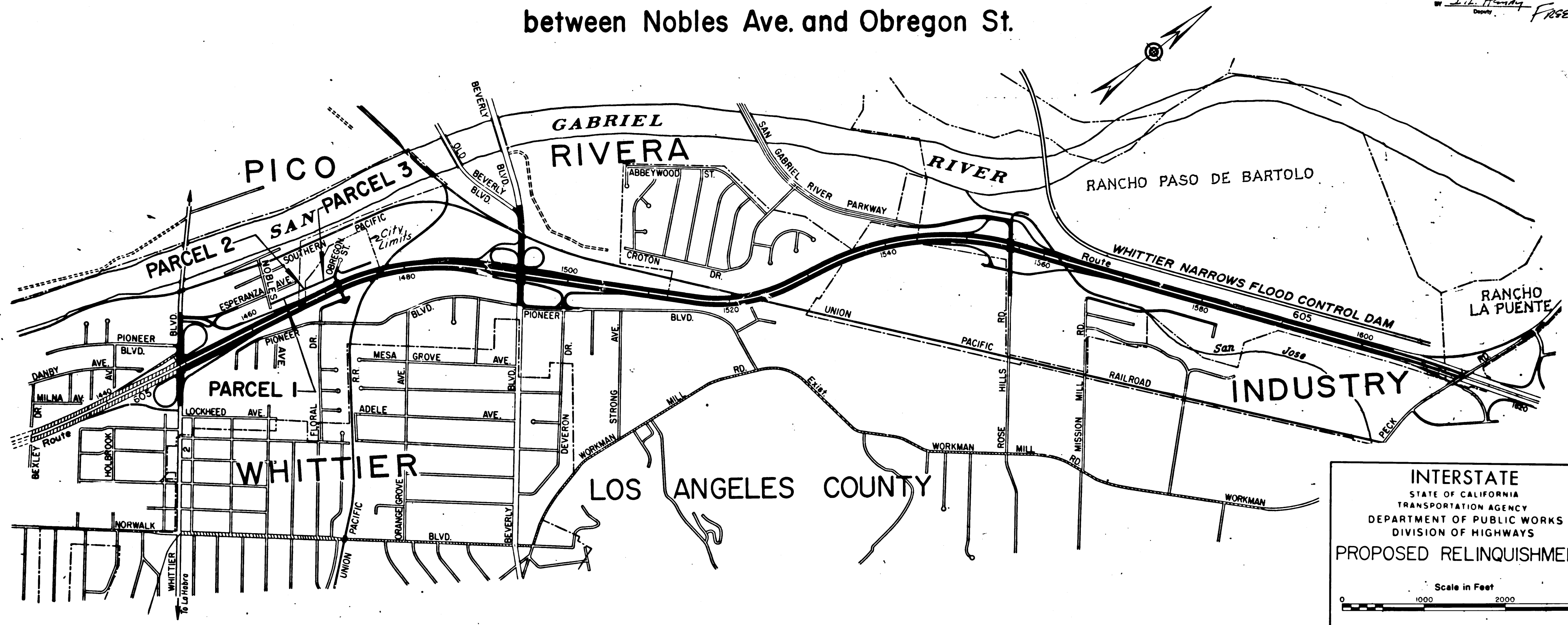
FILED
 AT REQUEST OF
 DEPT. OF PUBLIC WORKS
 JAN. 21, 1971
 9:11 AM
 PAST 11 AM

IN BOOK 9
 AT PAGE 27
 OF STATE HIGHWAY MAPS
 LOS ANGELES COUNTY CALIF.

COUNTY RECORDER
Ed. H. ...
 Deputy *FRSE*

RIGHT OF WAY MAPS OF
STATE HIGHWAY

A Sidewalk in the County of Los Angeles and the City of Pico Rivera
 between Nobles Ave. and Obregon St.



INTERSTATE
 STATE OF CALIFORNIA
 TRANSPORTATION AGENCY
 DEPARTMENT OF PUBLIC WORKS
 DIVISION OF HIGHWAYS
 PROPOSED RELINQUISHMENT

Scale in Feet
 0 1000 2000 3000

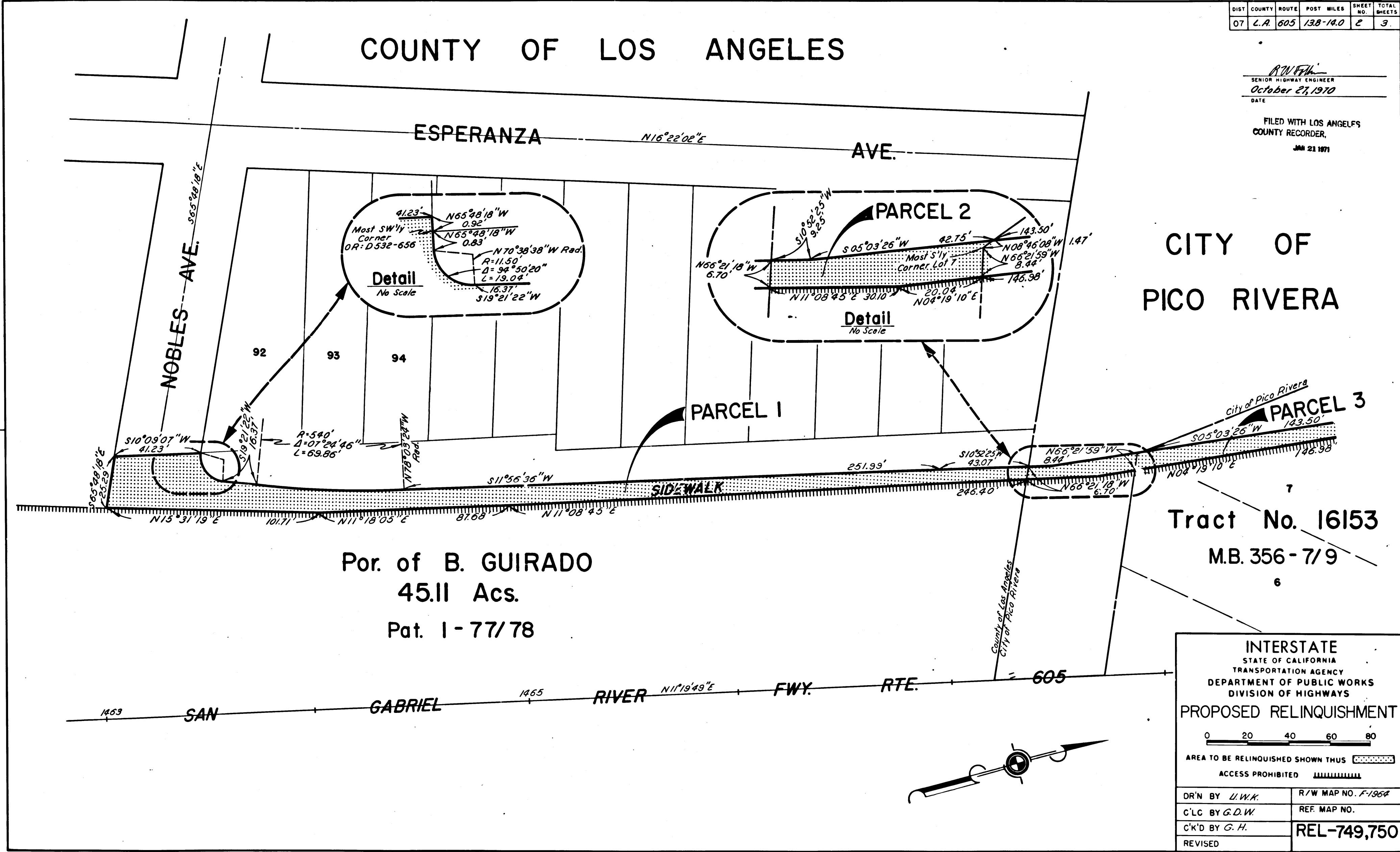
| | |
|-------------------------|---------------------------|
| DR'N BY <i>L.I.W.K.</i> | R/W MAP NO. <i>F-1964</i> |
| C'LC BY <i>G.D.W.</i> | REF. MAP NO. |
| C'K'D BY <i>G.H.</i> | REL-749,750 |
| REVISED | |

| DIST | COUNTY | ROUTE | POST MILES | SHEET NO. | TOTAL SHEETS |
|------|--------|-------|------------|-----------|--------------|
| 07 | L.A. | 605 | 138-140 | 2 | 3 |

COUNTY OF LOS ANGELES

R.W.F.H.
SENIOR HIGHWAY ENGINEER
October 27, 1970
DATE

FILED WITH LOS ANGELES COUNTY RECORDER,
JAN 21 1971



CITY OF PICO RIVERA

Tract No. 16153
M.B. 356 - 7/9

Por. of B. GUIRADO
45.11 Acs.
Pat. 1 - 77/78

INTERSTATE
STATE OF CALIFORNIA
TRANSPORTATION AGENCY
DEPARTMENT OF PUBLIC WORKS
DIVISION OF HIGHWAYS

PROPOSED RELINQUISHMENT

0 20 40 60 80

AREA TO BE RELINQUISHED SHOWN THUS [Dotted Line]

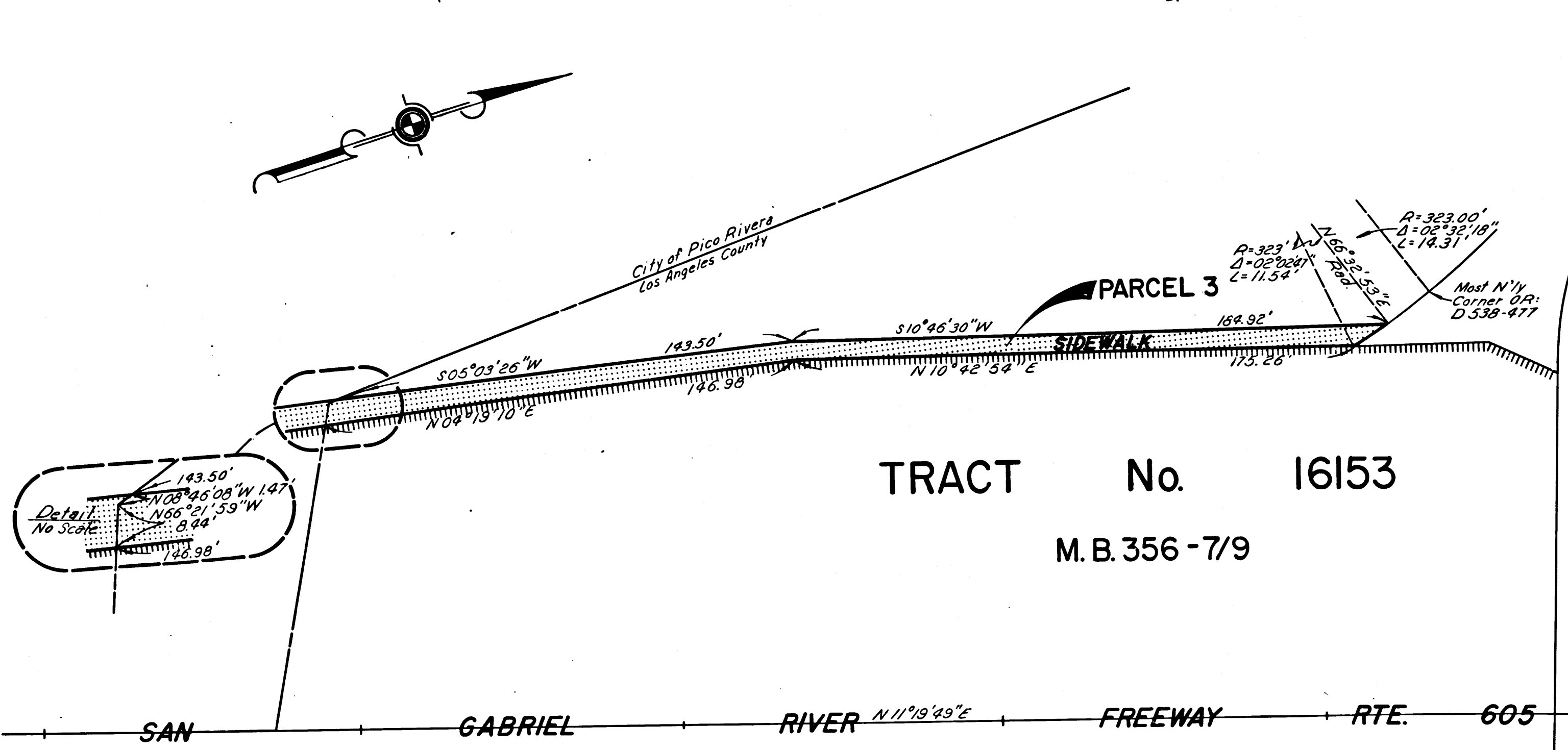
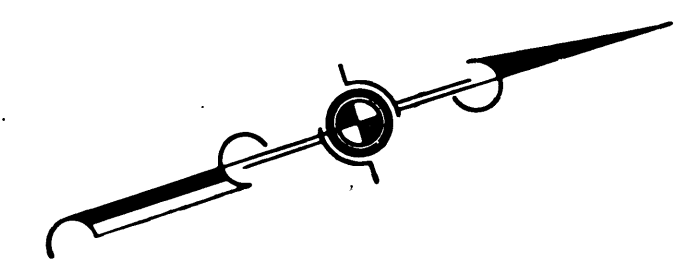
ACCESS PROHIBITED [Hatched Area]

| | |
|-----------------------|---------------------------|
| DR'N BY <i>L.W.K.</i> | R/W MAP NO. <i>F-1964</i> |
| C'LC BY <i>G.D.W.</i> | REF. MAP NO. |
| C'K'D BY <i>G.H.</i> | REL-749,750 |
| REVISED | |

| DIST | COUNTY | ROUTE | POST MILES | SHEET NO. | TOTAL SHEETS |
|------|--------|-------|------------|-----------|--------------|
| 07 | L.A. | 605 | 13.8-14.0 | 3 | 3 |

A.W. Felt
 SENIOR HIGHWAY ENGINEER
 October 27, 1970
 DATE L.E.D.
 FILED WITH LOS ANGELES
 COUNTY RECORDER,
 JAN 21 1971

CITY OF PICO RIVERA



COUNTY OF LOS ANGELES

INTERSTATE
 STATE OF CALIFORNIA
 TRANSPORTATION AGENCY
 DEPARTMENT OF PUBLIC WORKS
 DIVISION OF HIGHWAYS

PROPOSED RELINQUISHMENT

0 20 40 60 80

AREA TO BE RELINQUISHED SHOWN THUS [Dotted Pattern]

ACCESS PROHIBITED [Hatched Pattern]

| | |
|-------------------------|--------------------------|
| DR'N BY <i>L.I.W.K.</i> | R/W MAP NO. <i>F1962</i> |
| C'LC BY <i>G.D.W.</i> | REF. MAP NO. |
| C'K'D BY <i>G.H.</i> | REL-749,750 |
| REVISED | |

9/29

COUNTY ENGINEER'S COPY