

Bl-16 pg 28

BOOK 16 PAGE 28

STATE		FEDERAL PROJECT NO.	
CALIF.		I-405-3(107)163	
DIST	COUNTY	ROUTE	POST MILES
07	LA	405	45.9/46.4
		SHEET NO.	TOTAL SHEETS
		1	6

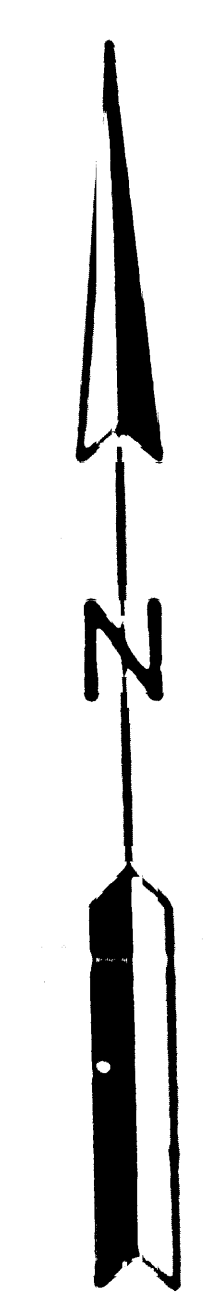
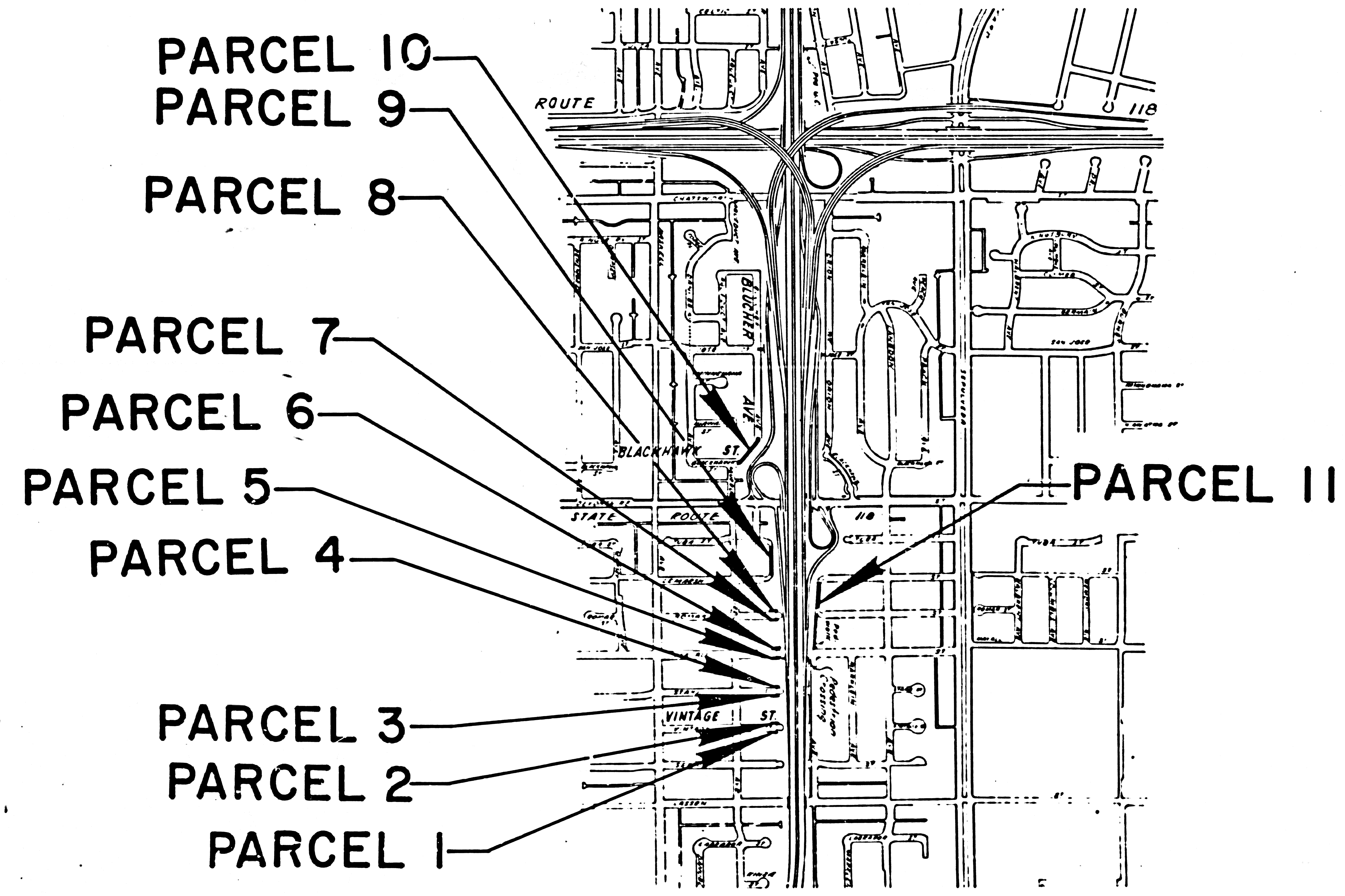
STATE OF CALIFORNIA  
 BUSINESS AND TRANSPORTATION AGENCY  
 DEPARTMENT OF TRANSPORTATION

79-597125  
 79-597128  
 FILED  
 AT REQUEST OF  
 DEPT. OF PUBLIC WORKS  
 JUNE 1, 1979  
 16 4 PM  
 IN BOOK 16  
 AT PAGE 28  
 OF STATE HIGHWAY MAPS  
 LOS ANGELES COUNTY, CALIF.  
 Registrar-Recorder  
 BY *Jm*  
 FREE

*CB Spiller*  
 RIGHT OF WAY ENGINEERING  
 REGISTERED CIVIL ENGINEER NO. 14117  
 DATE 1-9-79

RIGHT OF WAY MAPS OF  
 STATE HIGHWAY  
 IN THE CITY OF LOS ANGELES ALONG RTE. 405 FREEWAY  
 FROM VINTAGE ST. TO BLACKHAWK ST. AND BLUCHER AVE.

Recorded in the Office  
 of the County Recorder  
 LOS ANGELES COUNTY  
 S.H.M.B. No. Pg.



(14)

INTERSTATE

STATE OF CALIFORNIA  
 BUSINESS AND TRANSPORTATION AGENCY  
 DEPARTMENT OF TRANSPORTATION

PROPOSED RELINQUISHMENT

0 600 1200 1800 2400

AREA TO BE RELINQUISHED

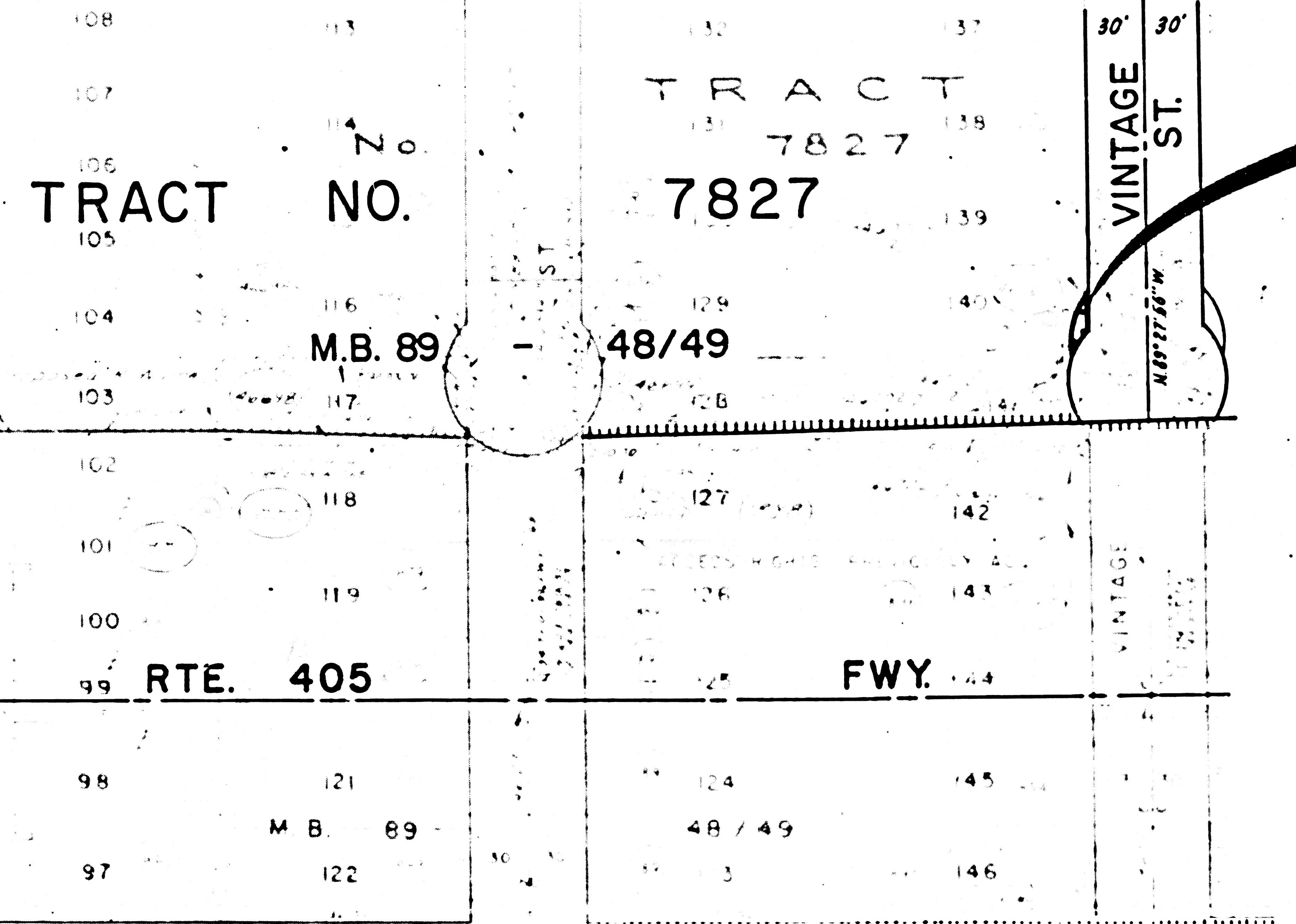
DR'N BY B.T.	R/W MAP NO. F1945
C'LC BY R.B.	CONTRACT NO. 022824
CK'D BY	REL-1037
REVISED	

Br 16 p 29

BOOK 16 PAGE 29

STATE	FEDERAL PROJECT NO.			
CALIF	I-405-3(107)163			
DIST	COUNTY	ROUTE	POST MILES	SHEET TOTAL NO SHEETS
07	LA	405	45.9/46.4	2 6

# CITY OF LOS ANGELES



**PARCEL I**  
SEE DETAIL

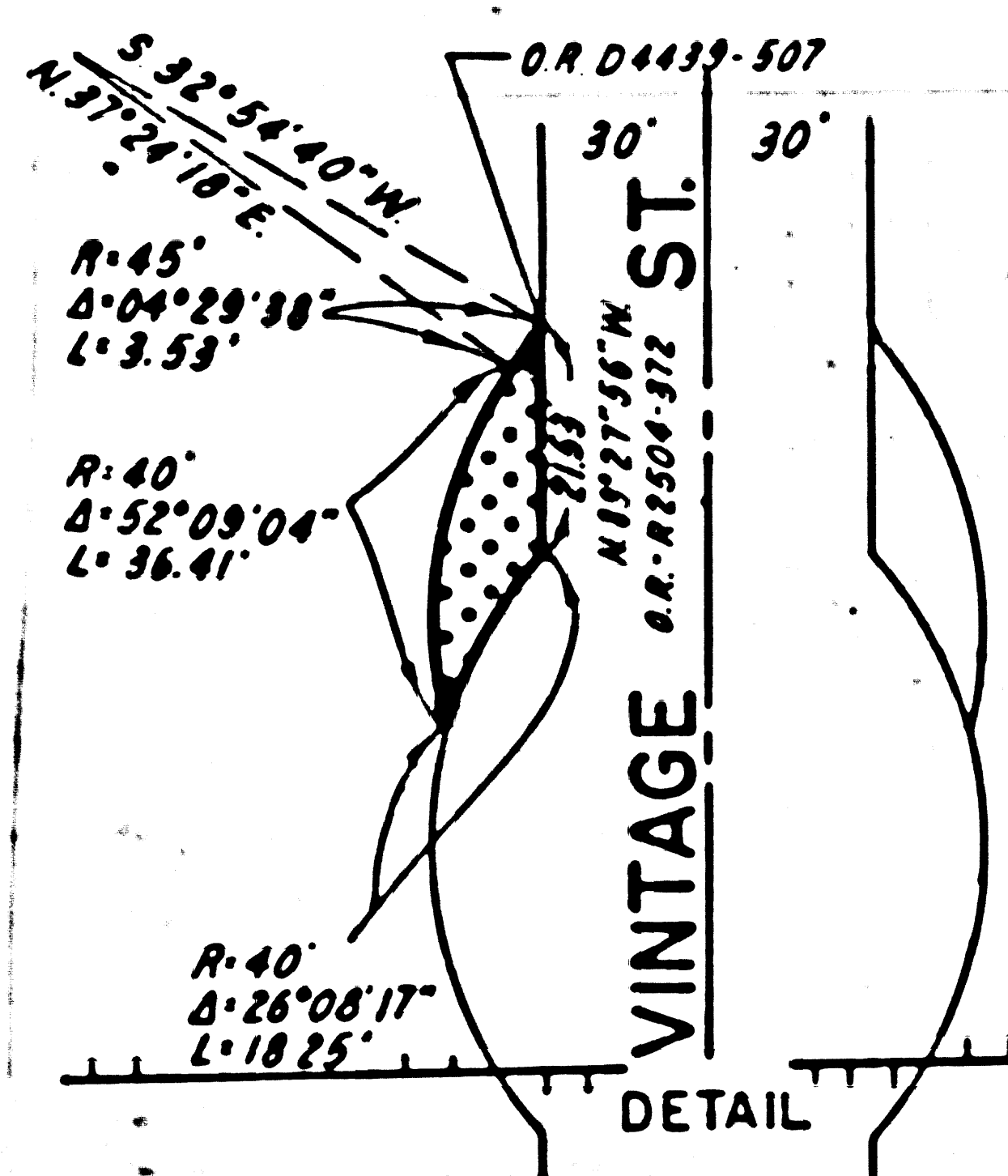
ST

LASSEN

20120  
40

ORION

SEPTO



DETAIL

*CBA*  
 SENIOR TRANSPORTATION ENGINEER  
 RIGHT OF WAY ENGINEERING  
 REGISTERED CIVIL ENGINEER NO. 14117

DATE 1-9-79

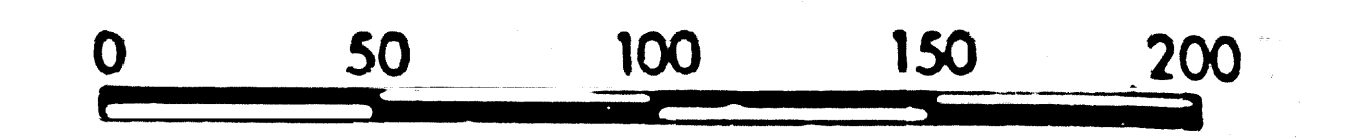
Recorded in the Office  
 of the County Recorder  
 LOS ANGELES COUNTY

S.H.M.B. No. Pg.

## INTERSTATE

STATE OF CALIFORNIA  
 BUSINESS AND TRANSPORTATION AGENCY  
 DEPARTMENT OF TRANSPORTATION

### PROPOSED RELINQUISHMENT



AREA TO BE RELINQUISHED

ACCESS PROHIBITED

DR'N BY	B.T.	R/W MAP NO.	F-1945-1
C'LC BY	R.B.	CONTRACT NO.	022824
C'K'D BY			
REVISED			REL- 1037

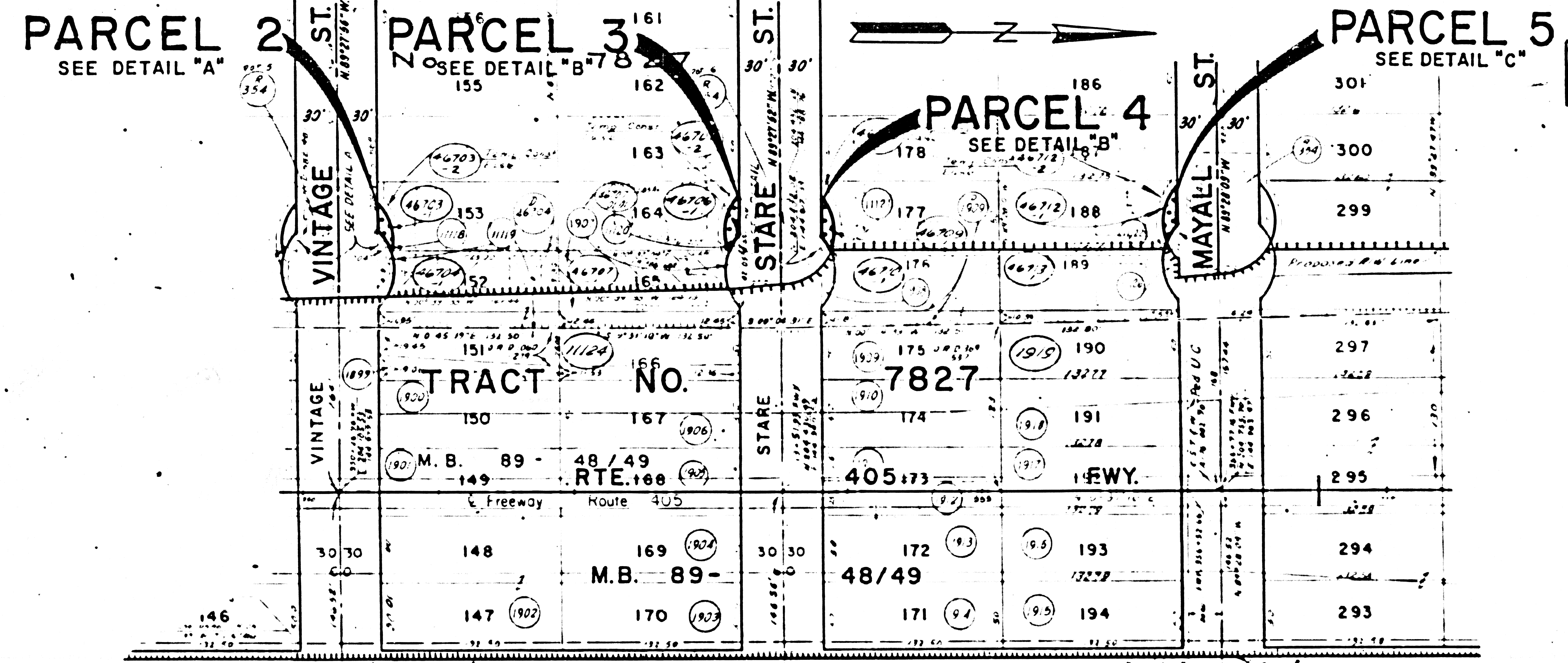
R/L 16 pg 30

BOOK 16 PAGE 30

STATE	FEDERAL PROJECT NO.				
CALIF	I-405-3(107)163				
DIST	COUNTY	ROUTE	POST MILES	SHEET NO	TOTAL SHEETS
07	LA	405	45.9/46.4	3	6

# CITY OF LOS ANGELES

## TRACT



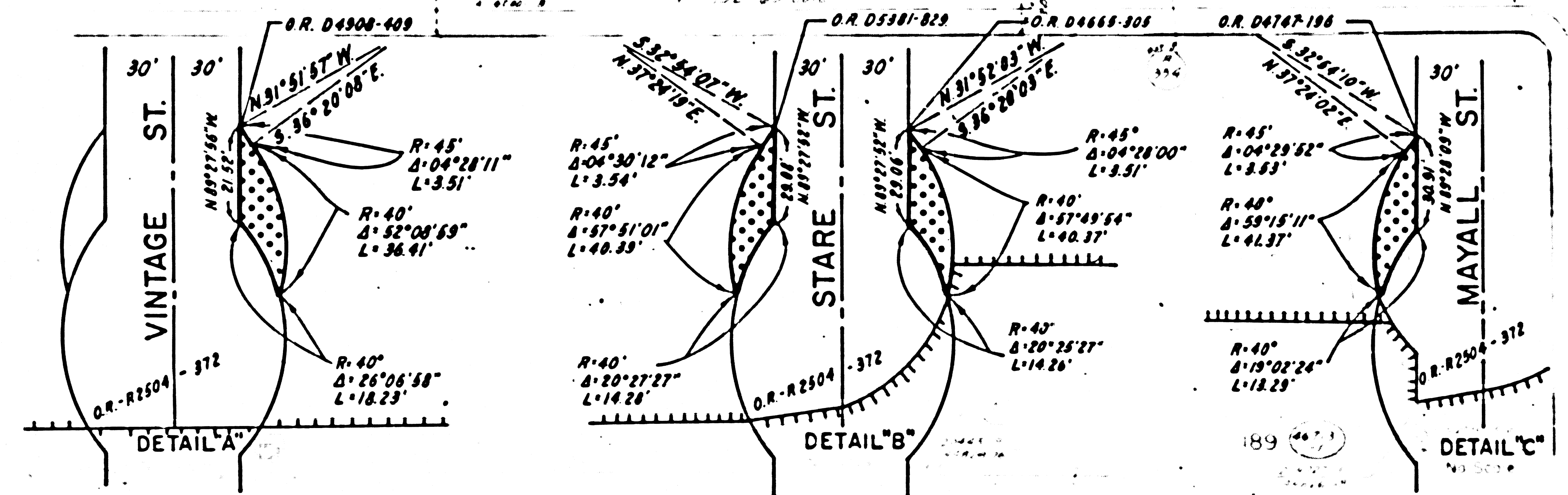
FILED WITH LOS ANGELES COUNTY RECORDER  
JUN 1 1979

*C.B. ...*  
SENIOR TRANSPORTATION ENGINEER  
RIGHT OF WAY ENGINEERING  
REGISTERED CIVIL ENGINEER NO. 14117

DATE 1-9-79

Recorded in the Office of the County Recorder  
LOS ANGELES COUNTY

S.H.M.B. No. Pg.



37
36
35
34

### INTERSTATE

STATE OF CALIFORNIA  
BUSINESS AND TRANSPORTATION AGENCY  
DEPARTMENT OF TRANSPORTATION

## PROPOSED RELINQUISHMENT

0 50 100 150 200

AREA TO BE RELINQUISHED [Pattern]

ACCESS PROHIBITED [Pattern]

DR'N BY	B.T.	R/W MAP NO.	F-1945-2
C'LC BY	R.B.	CONTRACT NO.	022824
C'K'D BY			
REVISED			REL-1037

Bill 1033

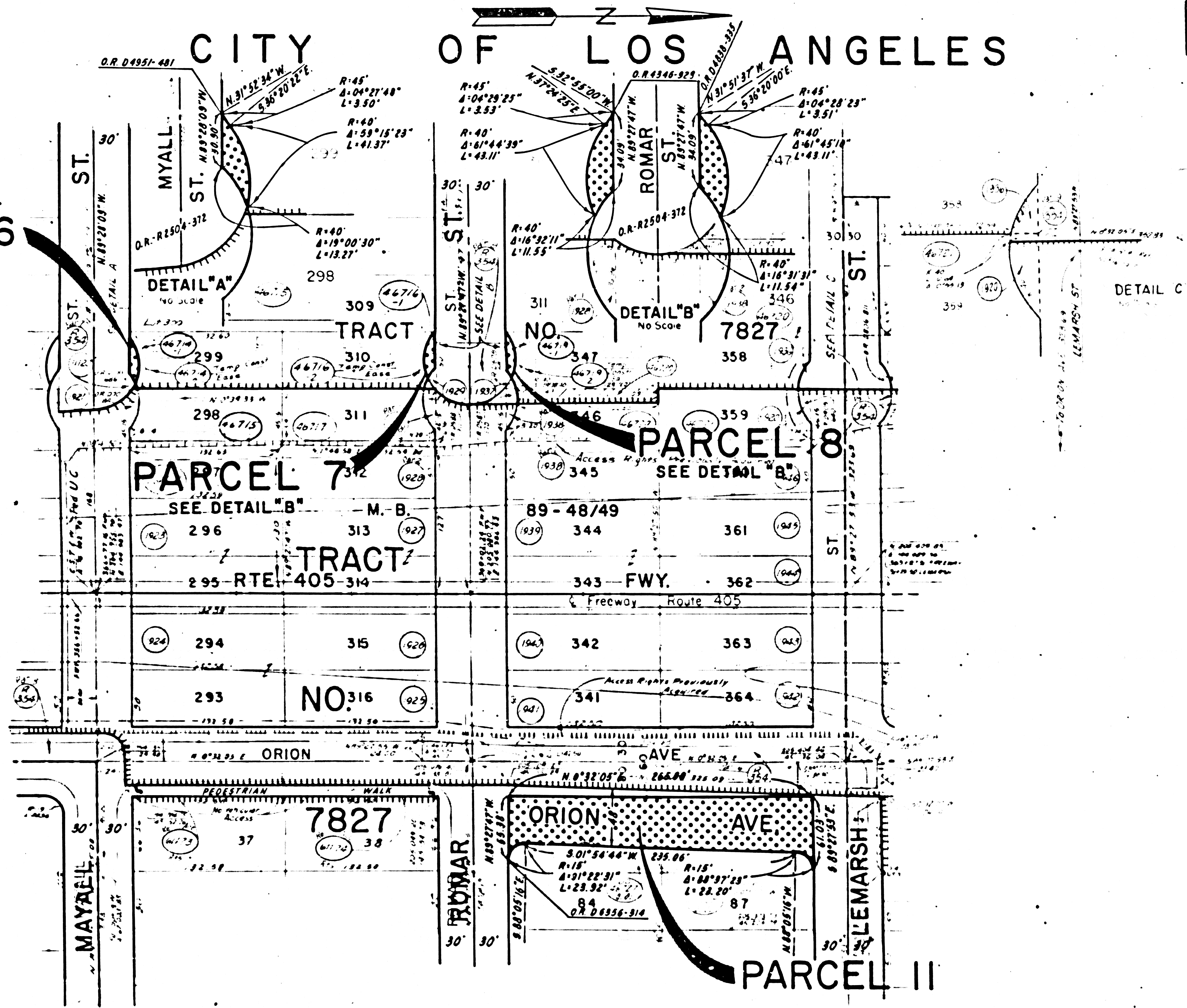
STATE	FEDERAL PROJECT NO.		
CALIF	I-405-3(107)163		
DIST	COUNTY	ROUTE	POST MILES
07	LA	405	45.9/46.4
SHEET NO.		TOTAL SHEETS	
4		6	

FILED WITH LOS ANGELES  
COUNTY RECORDER  
JUN 1 1979

*P. B. ...*  
SENIOR TRANSPORTATION ENGINEER  
RIGHT OF WAY ENGINEERING  
REGISTERED CIVIL ENGINEER NO. 14117  
DATE 1-9-79

Recorded in the Office  
of the County Recorder  
LOS ANGELES COUNTY  
S.H.M.B. No. Pg.

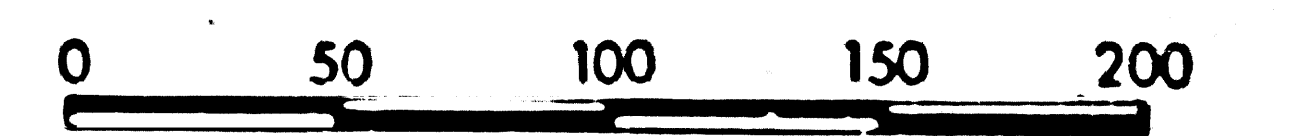
PARCEL 6  
SEE DETAIL "A"



INTERSTATE

STATE OF CALIFORNIA  
BUSINESS AND TRANSPORTATION AGENCY  
DEPARTMENT OF TRANSPORTATION

PROPOSED RELINQUISHMENT



AREA TO BE RELINQUISHED [Stippled Area]  
ACCESS PROHIBITED [Hatched Area]

DR'N BY	B.T.	R/W MAP NO.	F-1945-3
C'LC BY	R.B.	CONTRACT NO.	022824
C'K'D BY			
REVISED			REL-1037

# CITY OF LOS ANGELES

## PARCEL 9

Page 14 of 32

BOOK 86 PAGE 32

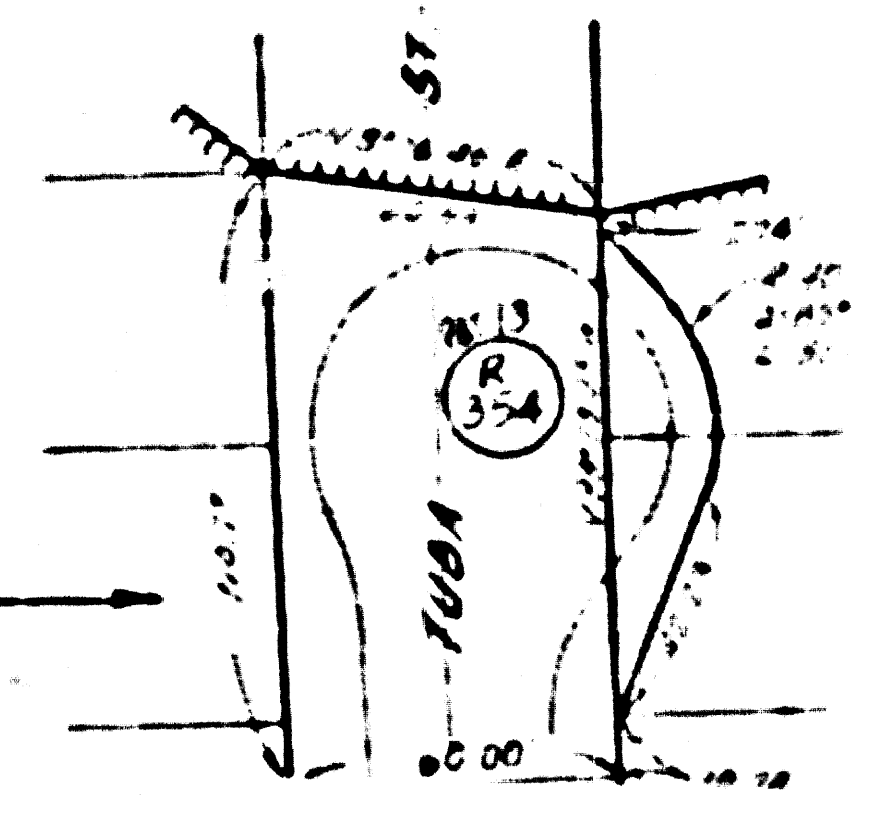
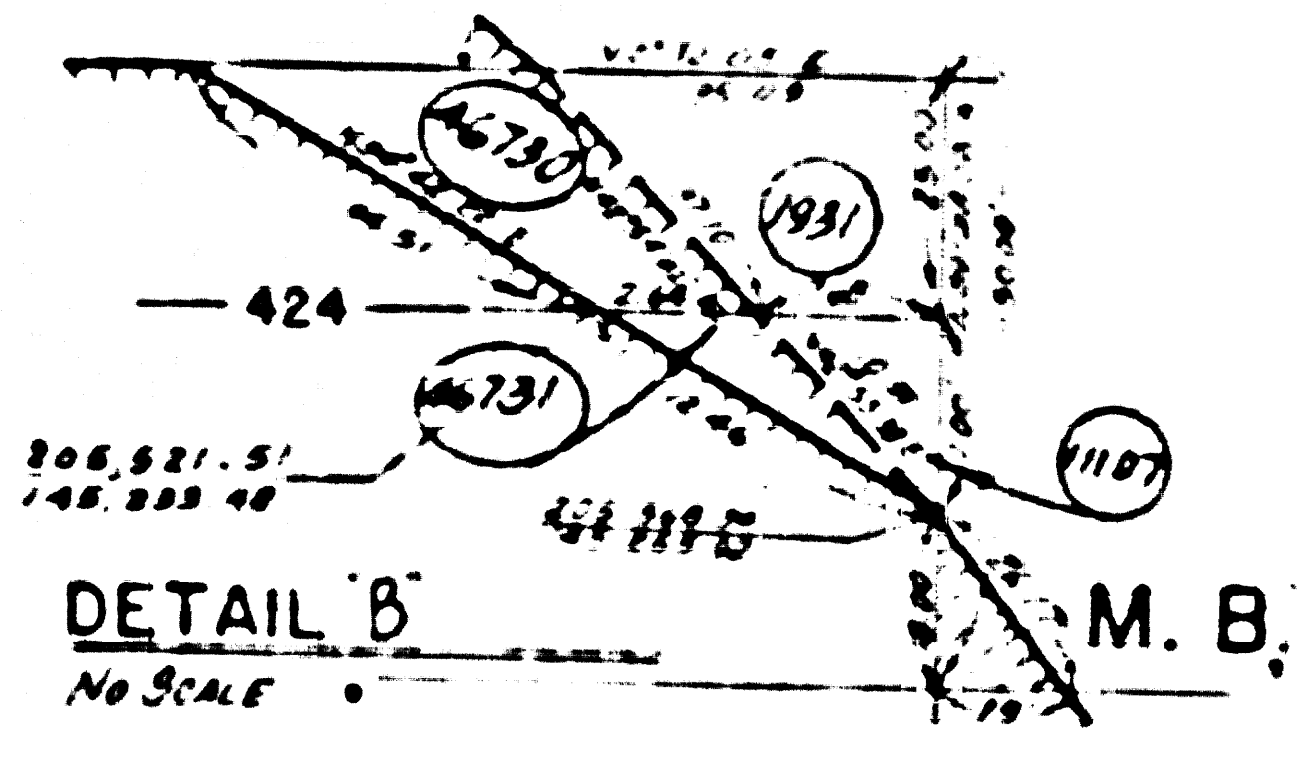
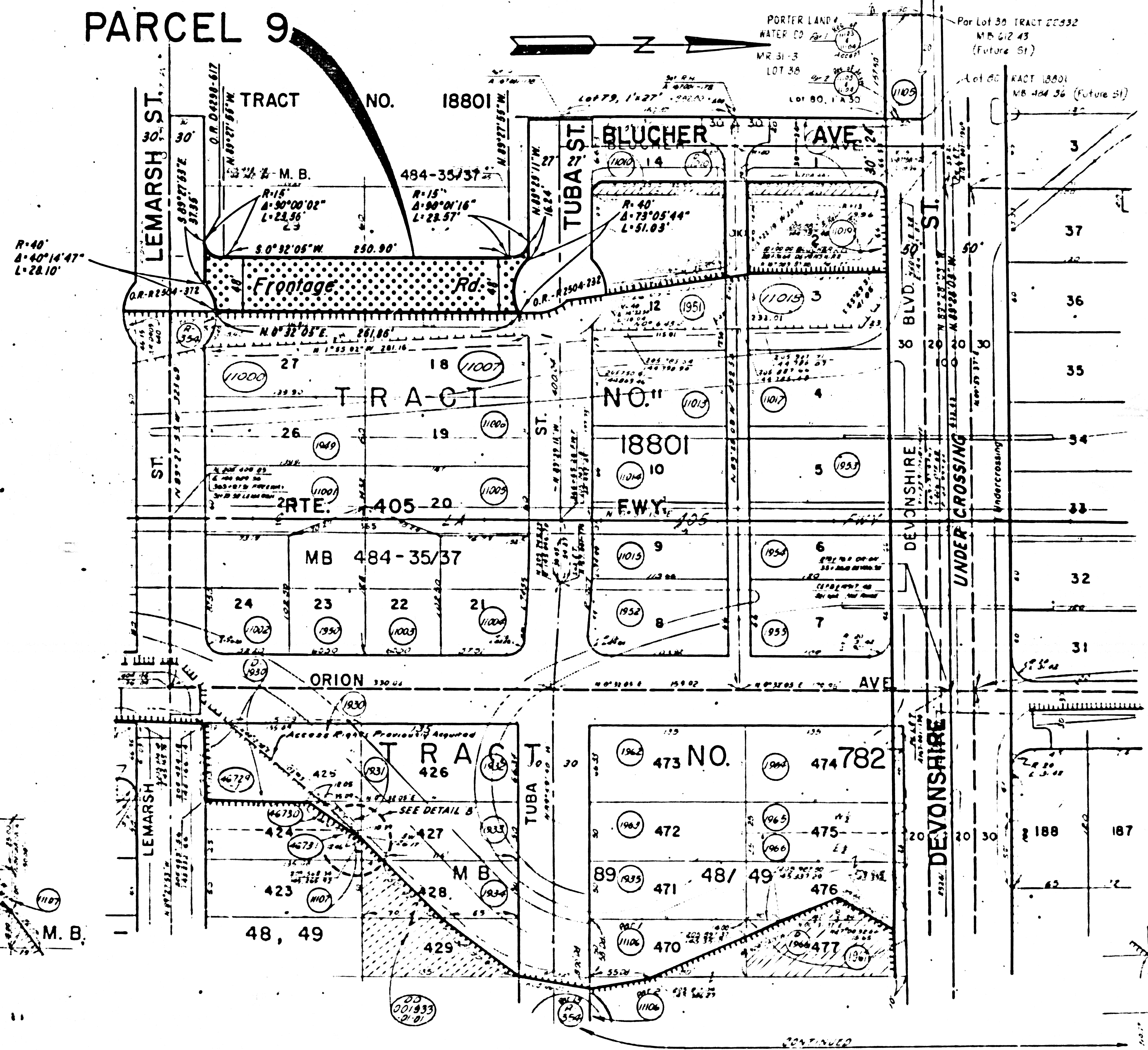
STATE	FEDERAL PROJECT NO.				
CALIF.	I-405-3107163				
DIST	COUNTY	ROUTE	POST MILES	SHEET NO.	TOTAL SHEETS
07	LA	405	459/46.4	5	6

FILED WITH LOS ANGELES COUNTY RECORDER  
JUN 1 1979

*C. B. ...*  
SENIOR TRANSPORTATION ENGINEER  
RIGHT OF WAY ENGINEERING  
REGISTERED CIVIL ENGINEER NO. 14117

DATE  
1-9-79

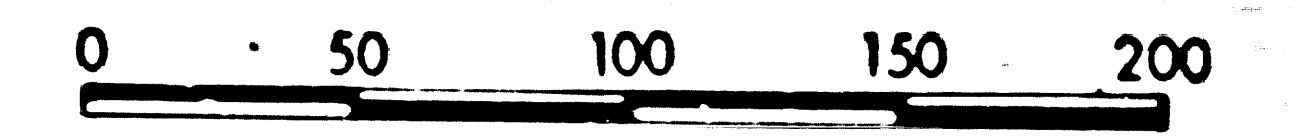
Recorded in the Office  
of the County Recorder  
LOS ANGELES COUNTY  
S.H.M.B. No. Pg.



### INTERSTATE

STATE OF CALIFORNIA  
BUSINESS AND TRANSPORTATION AGENCY  
DEPARTMENT OF TRANSPORTATION

### PROPOSED RELINQUISHMENT



AREA TO BE RELINQUISHED [Symbol]  
ACCESS PROHIBITED [Symbol]

DR'N BY	B. T.	R/W MAP NO.	F-1945-4
C'LC BY	R. B.	CONTRACT NO.	022824
C'K'D BY			
REVISED			REL-1037

BOOK PAGE

BK 16 p 33

BOOK 16 PAGE 33

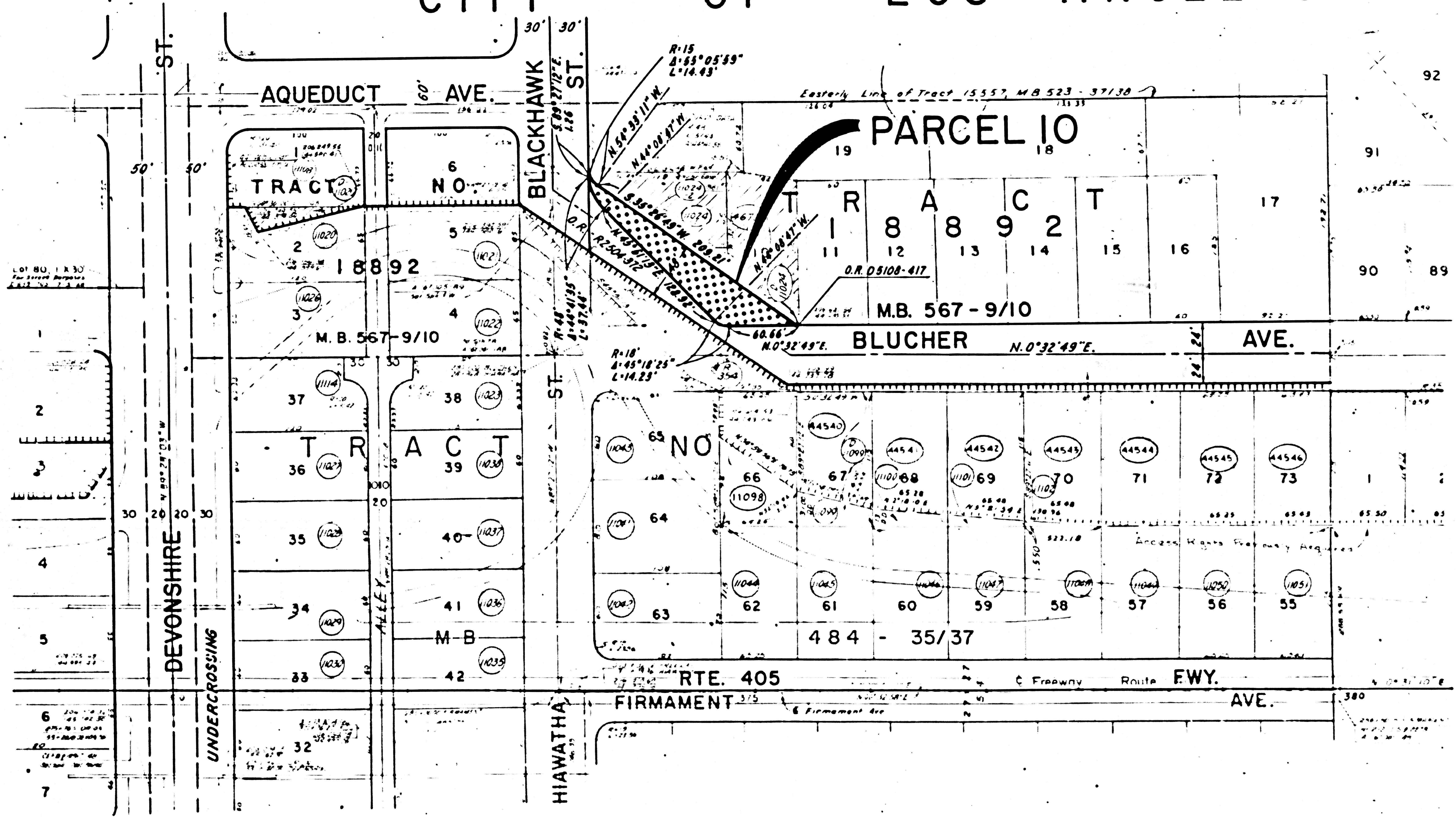
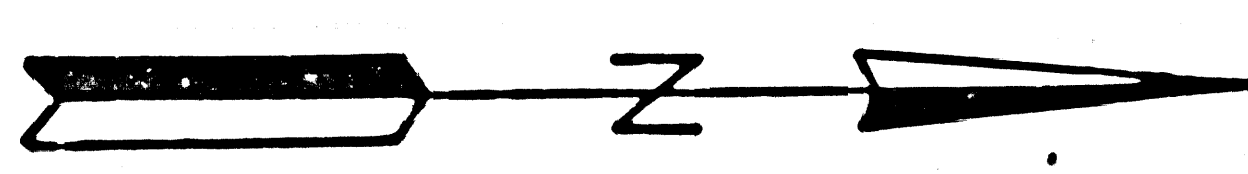
STATE	FEDERAL PROJECT NO.		
CALIF.	I-405-3(107)163		
DIST	COUNTY	ROUTE	POST MILES
07	LA	405	45.9/46.4
		SHEET NO.	TOTAL SHEETS
		6	6

FILED WITH LOS ANGELES COUNTY RECORDER  
JUN 1 1979

*C. B. ...*  
SENIOR TRANSPORTATION ENGINEER  
RIGHT OF WAY ENGINEERING  
REGISTERED CIVIL ENGINEER NO. 14117  
1-9-79  
DATE

Recorded in the Office of the County Recorder  
LOS ANGELES COUNTY  
S.H.M.B. No. Pg.

# CITY OF LOS ANGELES



## INTERSTATE

STATE OF CALIFORNIA  
BUSINESS AND TRANSPORTATION AGENCY  
DEPARTMENT OF TRANSPORTATION

### PROPOSED RELINQUISHMENT

0 50 100 150 200

AREA TO BE RELINQUISHED ACCESS PROHIBITED

DR'N BY	B. T.	R/W MAP NO.	F-1945-6
C'LC BY	R. B.	CONTRACT NO.	022024
C'K'D BY			
REVISED			REL-1037