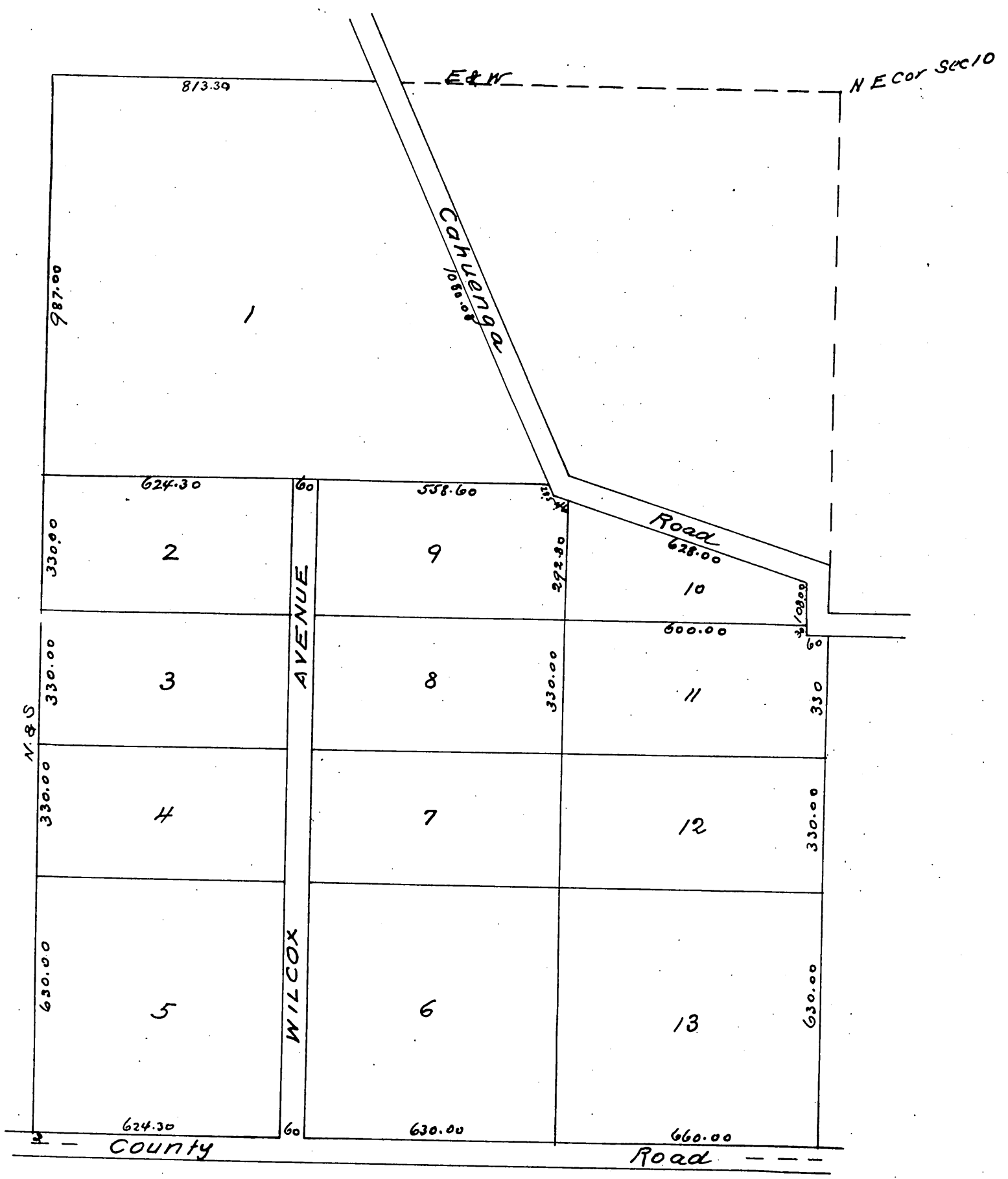


MAP OF HOLLYWOOD

Being the subdivision of the E 1/2 of the NE 1/4
and Lots 1 and 2 Sec 10 T 1 S R 14 W S. B. M
Scale 200 feet to one inch E. G. Jones C. E.



A full, true and correct copy of the original
(reduced to the scale of 300 feet to one inch)
recorded February 1 1887 at 50 min past 2 PM
at request of H. H. Wilcox
Frank A. Gibson County Recorder
By Geo. Bugbee Deputy