

SHERMAN HEIGHTS TRACT

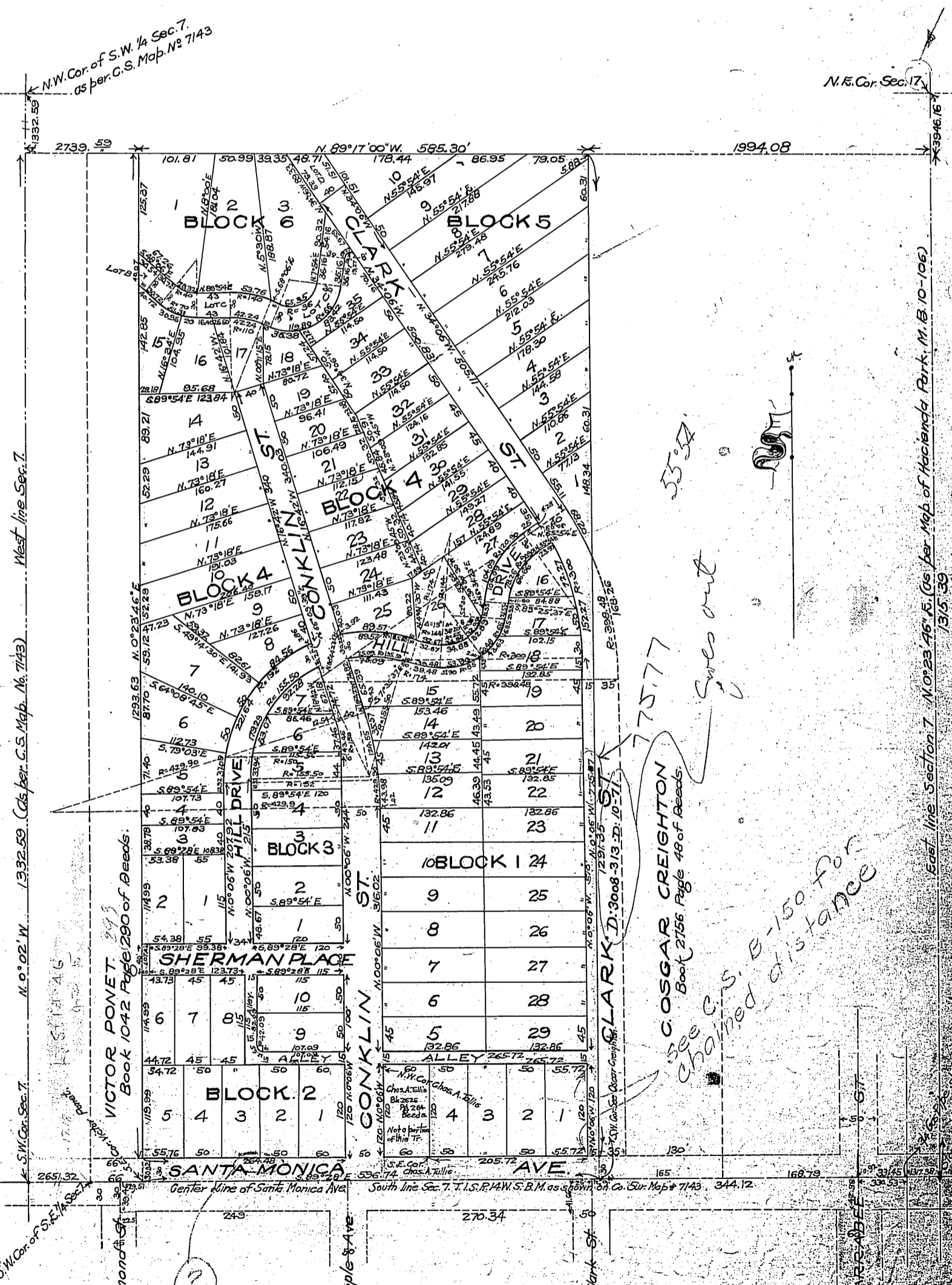
BEING A SUBDIVISION OF A PORTION OF THE S.W. 1/4
OF THE S.E. 1/4 OF SEC. 7. T.1S.R.14W. S.B.M.

Scale 1 in = 60 feet.

Partly in the City of Los Angeles

J. Estrakian
Engineer.

For alley west of this tract see D:84-135, O.R.10781-201; D:84-137, O.R.10826-186.
 Lot A for Sherman Place ~ D:84-135, O.R.10781-202; D:84-148, O.R.10768-362.
 Extending " westerly ~ D:84-137, O.R.10808-160.
 Lot A to City of L.A. ~ D:84-181, O.R.10887-325; D:84-216, O.R.11068-43.
 Clark St. name established ~ Ord.70774-1.
 Hill Drive changed to Ozeta Terrace ~ Ord.70774-2.
 Sherman Place changed to Shoreham Dr. ~ Ord.70774-4.
 For Sunset Blvd. widening see H:38-4-6, C.S.B-150, C.F.1891
 For Lot 14, Blk.4, for Pipe Line Purp. - E:28-161, O.R.16263-366.



Handwritten notes:
 55.54
 Goes out
 775.77
 See C. OSGAR CREIGHTON
 Book 2756 Page 48 of Beeds
 changed S. B-150 for
 changed distance

130.3+

Vac por. Santa Monica Ave D:12-13
 Deed for Santa Monica Ave D:10-94
 Conklin St & Whipple Ave changed to Hilldale Ave.
 For Sunset Blvd. widening see H:38-4-6
 Santa Monica Ave changed to Sunset Blvd D:13-22, and D:13-109 Sht 22, A-446-583
 A-85 1/2
 Proprietor Sherman Heights Land Co
 Recorded April 5, 1907
 (Scale reduced to 150=1) A-903
 Sht 10