

Devil's Gate Reservoir Sediment Removal and Management Project



The Los Angeles County Flood Control District (District) is pleased to announce the release of the Final Environmental Impact Report (EIR) for the Devil's Gate Reservoir Sediment Removal and Management Project. The Final EIR can be viewed in its entirety at <http://www.LASedimentManagement.com/DevilsGate>.

Alternative 3, Configuration D was found to be the Environmentally Superior Alternative in the Final EIR. The District will be recommending Alternative 3, Configuration D, Option 2 (See Next Page) in conjunction with Alternative 5 (optional haul routes) as the Recommended Project to be implemented.

The Recommended Project will remove approximately 2.4 million cubic yards (cy) of current excess sediment in the reservoir in addition to any additional sediment received during the project. Additionally, this alternative will include removal of sediment stockpiled at Johnson Field as part of the annual Interim Measures Project. Excavation will not involve the Oak Grove area of Hahamongna Park or areas of the reservoir outside the excavation limits shown.

The Recommended Project is based on the City of Pasadena's approved Hahamongna Watershed Park Master Plan (HWPMP) and drastically reduces the project's footprint of 120 acres to 71 acres. Additionally, the limited maintenance area for Alternative 3, shown in blue on the next page, further reduces the permanent habitat impacts to approximately 52 acres by including site replanting and mitigation outside the management area.

Other project features have also been included in the Final EIR in order to reduce impacts to air quality. Mitigation Measure MM AQ-1 has been revised to require the use of low emission sediment removal dump trucks. These trucks must meet or exceed EPA's 2007 emission standards. With implementation of this Mitigation Measure, impacts to air quality will be reduced to less than significant.

Alternative 5 has added phasing of haul routes to reduce traffic impacts and balance truck traffic between the cities of La Cañada Flintridge and Pasadena. During the school year, trucks will enter and exit the freeway using the Windsor Avenue during the morning peak hours. The proposed route using Windsor Avenue to exit the freeway and Berkshire Avenue to enter the freeway will be used the rest of the day. During the summer months, traffic will enter and exit the freeway using Berkshire Avenue. Any of these haul routes may be used to avoid traffic.

For removal of the 2.4 million cy of sediment, the Recommended Project specifications will limit hauling to a maximum of 800,000 cy per year and establish hauling hours as 7:00 am to 3:30 pm Monday through Friday excluding holidays and major Rose Bowl events, and will only occur during the dry season from April 15th through December depending on storm events. Trucks will be prohibited from staging on city streets.



FOR MORE INFORMATION

Visit our website:

www.lasedimentmanagement.com/devilsgate

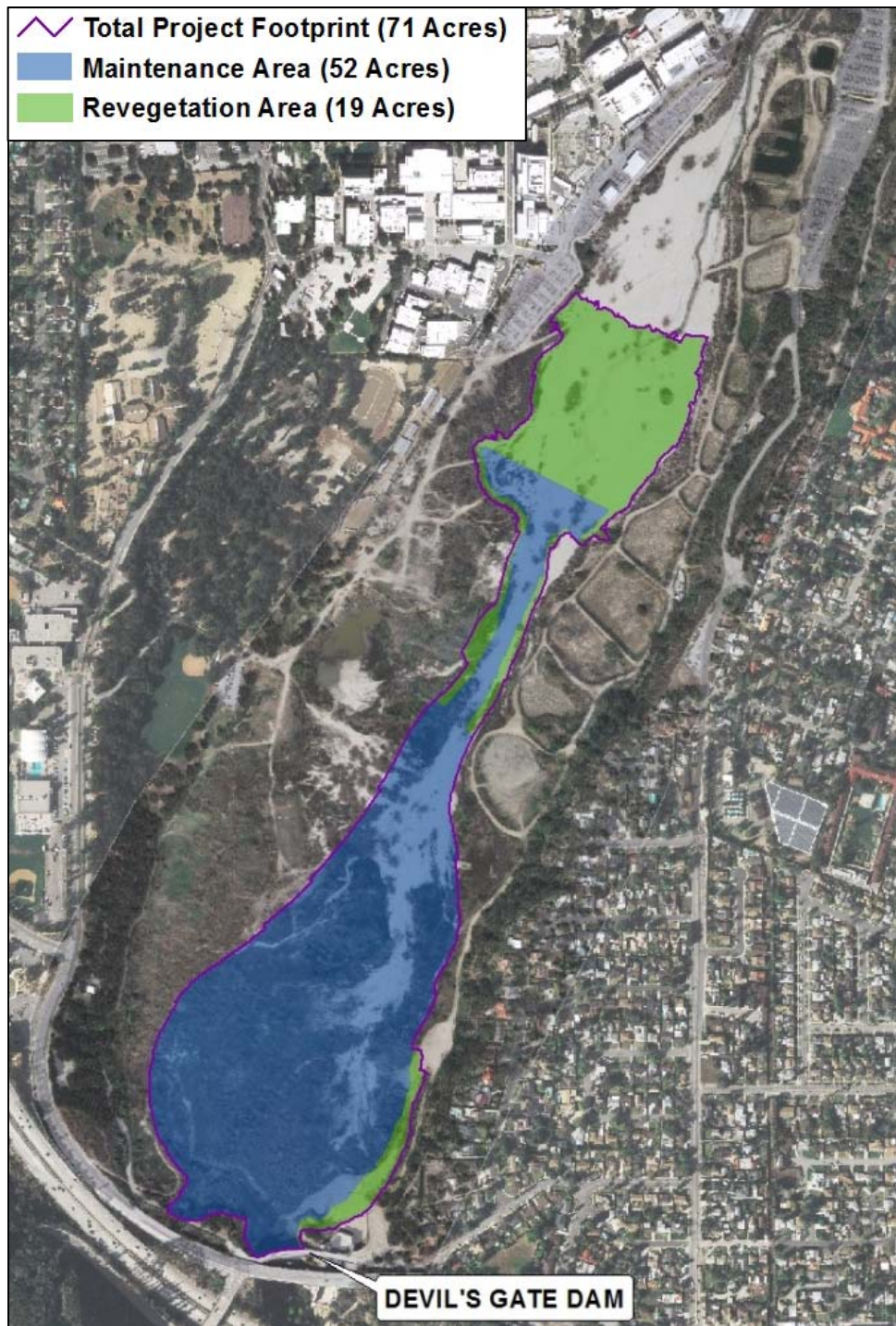
Send an email:

reservoircleanouts@dpw.lacounty.gov

or Write to:

Los Angeles County Department of Public Works
Attn: Water Resources Division - Reservoir Cleanouts
P.O. Box 1460
Alhambra, CA 91802-9974

Devil's Gate Reservoir Sediment Removal and Management Project



Alternative 3, Configuration D, Option 2