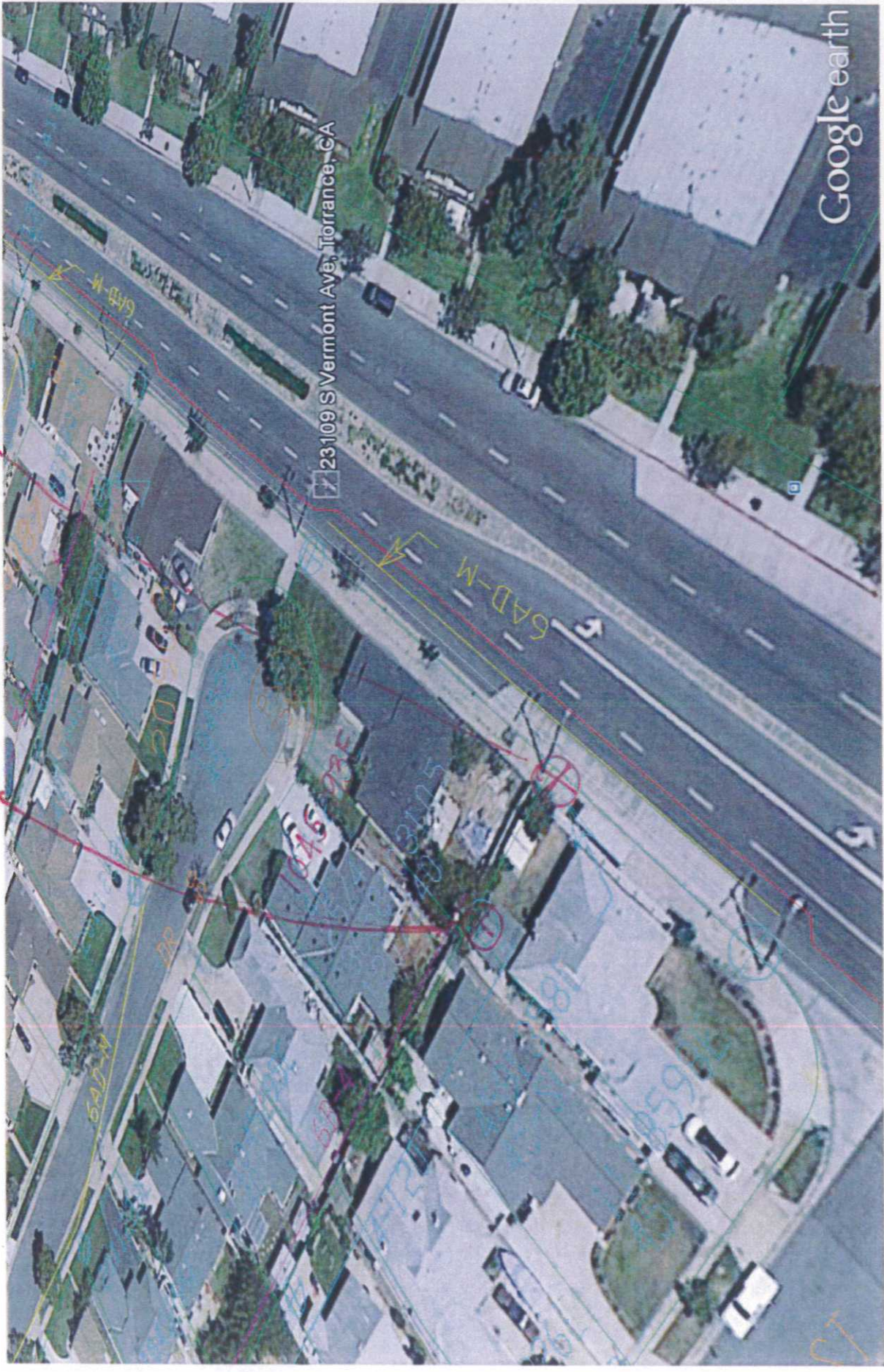


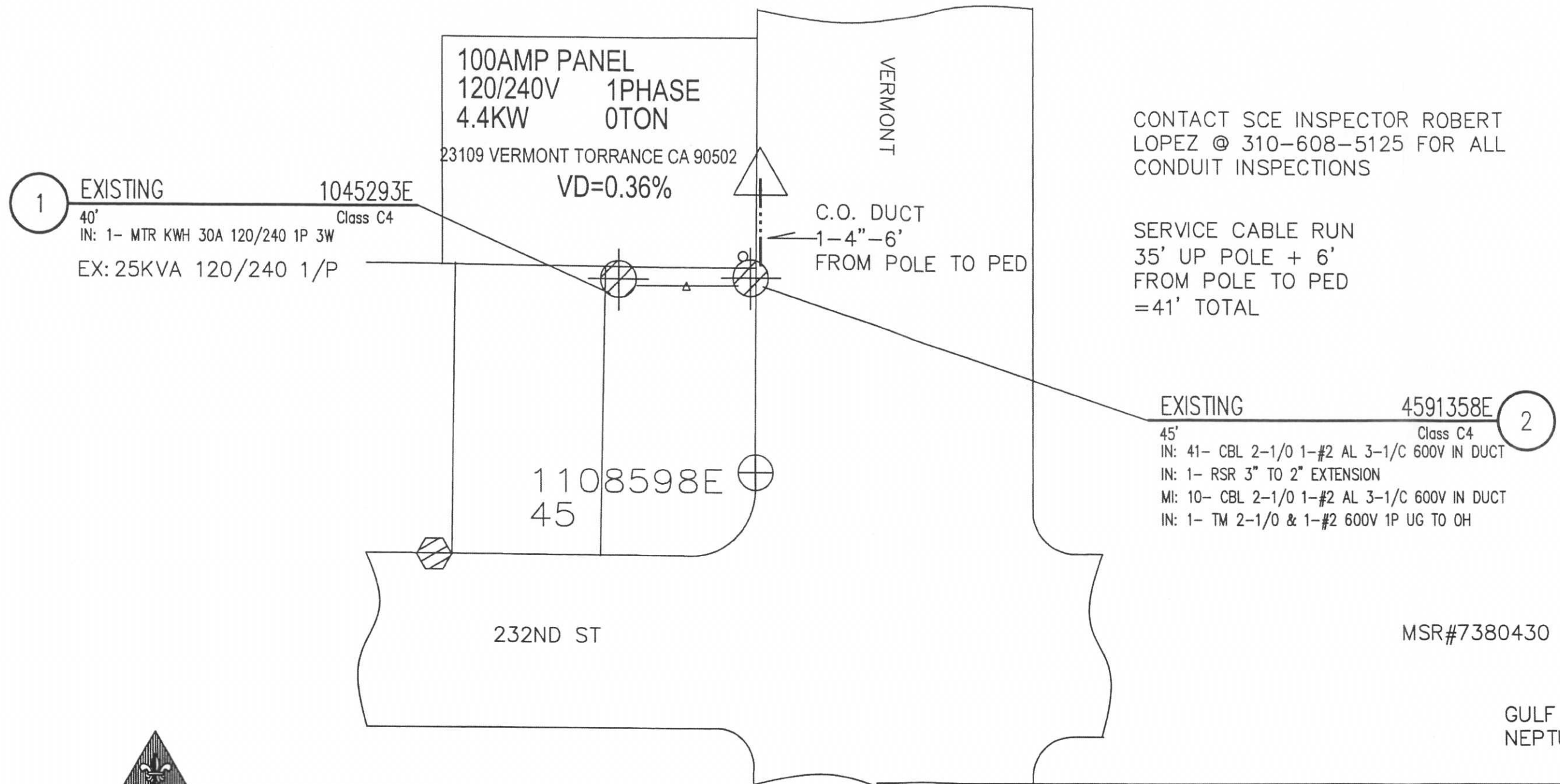
Pole # 4591358E

Pole # 1045293E



Google Earth Pro

NEW 100 AMP PED. SERVICE

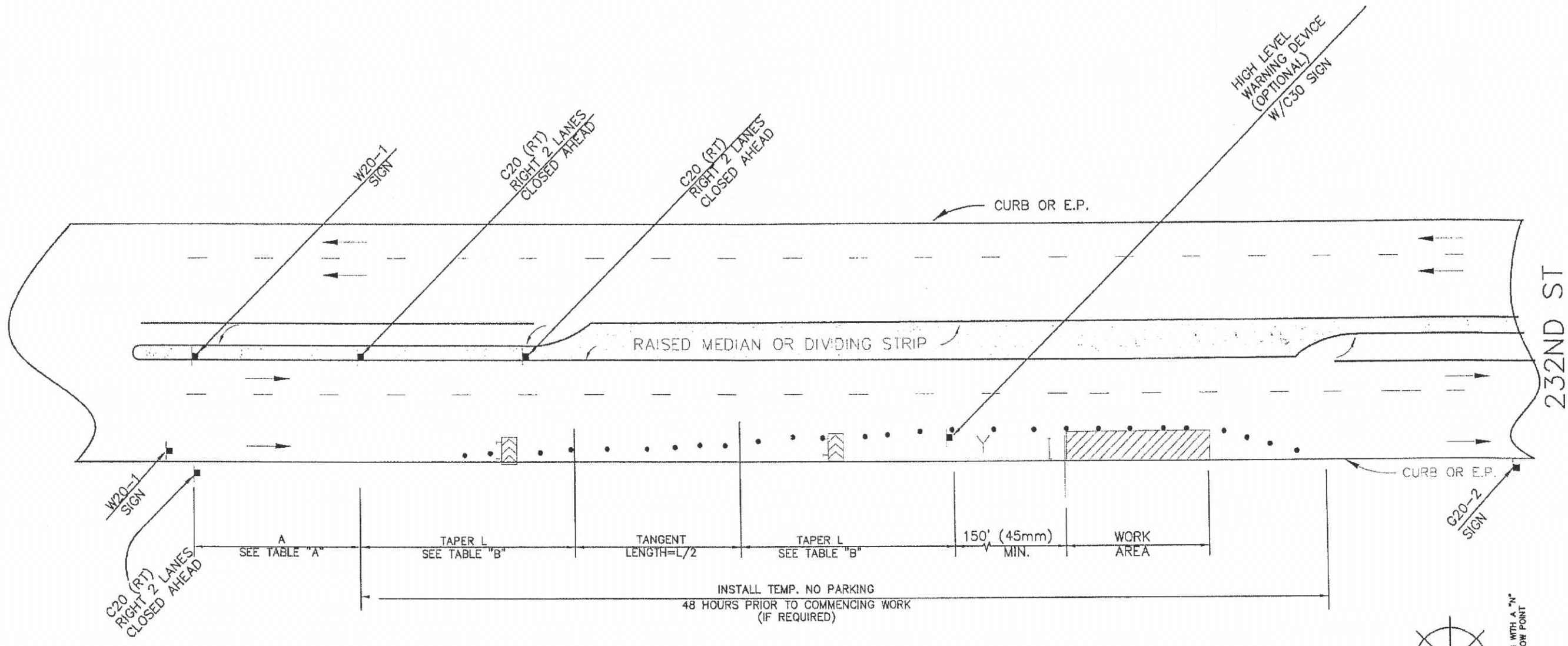


SCALE: 1" = 40'



| TOTAL KVA | TLM PEAK KVA | %LOAD | #CUST |
|-----------|--------------|-------|-------|
| EX: 25 | 32 | 125 | 10 |
| NEW: 25 | 37 | 148 | 11 |

| | | | | | |
|---|-----------------|-----------------------------------|---------------------------------|---|------------------------------------|
| DISTRICT 32 - COMPTON | | PROJ. MGR. MORGAN, TIM J PHONE | | PLANNER MORGAN, TIM J PHONE 5622592117 | |
| FOREMAN | TRUCK NO. | P/E | INVENTORY MAP NO. 044-4197-1 | THOMAS GUIDE 794 B2 | GRID NO. DESIGN NO. 616965_0.01 |
| CSD 140 Y N | BY-PASS CODE | EXISTING CHANGE TO | TLM CHECKED | %LOAD | J.P.A. NO. ASSOCIATED DESIGN NO. |
| PRODUCT/SAP NO. 885758-NEW METER & SERVICE | | | PRODUCT/SAP NO. | | PRODUCT/SAP NO. |
| PROPOSED CONSTRUCTION (LOCATION) | | | | | |
| 23109 VERMONT TORRANCE | | | | | |
| SHEET | | | | JOB NO. 616965_0.01 | |
| TYPE APPROVED BY | | DATE | CHECKED BY | DRAWN BY | PAX # |
| Southern California Edison Company | | | | | |



W20-1 SIGN
C20 (RT) RIGHT 2 LANES CLOSED AHEAD

A
SEE TABLE "A"

TAPER L
SEE TABLE "B"

TANGENT
LENGTH=L/2

TAPER L
SEE TABLE "B"

150' (45m)
MIN.

WORK
AREA

INSTALL TEMP. NO STOPPING
48 HOURS PRIOR TO COMMENCING WORK
(IF REQUIRED)

G20-2 SIGN

232ND ST

HIGH LEVEL
WARNING DEVICE
(OPTIONAL)
W/C30 SIGN

VERMONT
STREET NAME

LEGEND

- TYPE III BARRICADE W/SIGN
- TYPE II BARRICADE W/O SIGN
- 28"(11cm) TRAFFIC CONES W/13"(5cm) REFLECTIVE SLEEVE FOR DAY/NIGHT USE OR DELINEATORS IF DAY USE ONLY
- PROPOSED SIGN AND POST
- EXISTING SIGN AND POST
- SIGNALIZED INTERSECTION
- FLASHING ARROW SIGN CATCH-ON-DRIZZLING
- HIGH LEVEL WARNING DEVICE WITH SIGN
- FLAGGER
- TANSAT TOW AWAY NO STOPPING TO (SHOW HOURS)
- TANSAT TOW AWAY NO STOPPING ANY TIME
- WORK ZONE LIMITS
- DIRECTION OF TRAFFIC
- ROADWAY DESIGNATION (A THROUGH D)

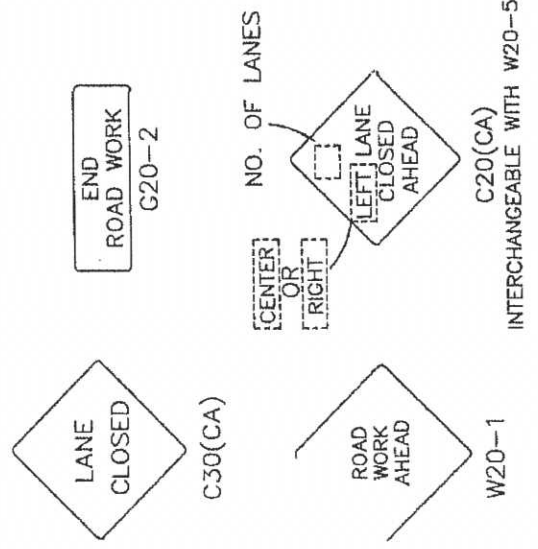
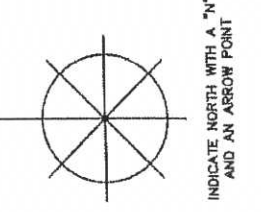


CHART A
MINIMUM RECOMMENDED DELINEATOR/CONE & SIGN PLACEMENT

| POSTED SPEED LIMIT | TAPER LENGTH FOR MERGING | | CHANGELINE SPACING | | SIGN SPACING (ADVANCE BY IN TAPER ZONE) | |
|--------------------|--------------------------|----------|--------------------|---------|---|---------------|
| | SHIFTING | SHOULDER | TAPER | TANGENT | TAPER | TANGENT |
| 20 MPH | 80 FT. | 27 FT. | 20 FT. | 40 FT. | 40 FT. | 100 FT. |
| 25 MPH | 125 FT. | 42 FT. | 25 FT. | 63 FT. | 63 FT. | 100 FT. |
| 30 MPH | 150 FT. | 60 FT. | 30 FT. | 90 FT. | 90 FT. | 350 FT. |
| 35 MPH | 245 FT. | 90 FT. | 35 FT. | 123 FT. | 123 FT. | 350 FT. |
| 40 MPH | 320 FT. | 123 FT. | 40 FT. | 160 FT. | 160 FT. | 350 FT. |
| 45 MPH | 540 FT. | 180 FT. | 45 FT. | 270 FT. | 270 FT. | 500 FT. |
| 50 MPH | 600 FT. | 300 FT. | 50 FT. | 300 FT. | 300 FT. | 500 FT. |
| 55+ MPH | 680 FT. | 330 FT. | 55 FT. | 330 FT. | 330 FT. | PER TABLE 'A' |



WORKSITE TRAFFIC CONTROL PLAN
MULTI LANE CLOSURE (RIGHT LANE)

DATE: _____ SCALE: NONE
DRAWING NO.: 20