

FIELD COPY

**COUNTY OF LOS ANGELES
ROAD DEPARTMENT**

**PRECISE
BENCH MARK LIST**



**ARCADIA QUAD
1965 ADJUSTMENT**

FIELD COPY

PREFACE

The Road Department level net is composed of more than 1,000 miles of levels supporting in excess of 10,000 bench marks. In 1964-65, a major readjustment of the net was undertaken. To emphasize the complete break with previous elevations, the SY, SG & SL series bench marks have been re-labeled BY, BG & BL, respectively.

To facilitate the adjustment, indexing, and distribution of adjusted values of the net, the County territory was divided into 31 quads or areas. For identification purposes each quad was given a name, viz., "Rosemead," "La Mirada," "Santa Fe," etc. When bench marks and elevations in the Road Department net are used, the name of the quad in which the bench mark is located and the date of the adjustment of the elevation must be included in the bench mark description, e.g.,

BG 1887 --L+BN IN CONC HDWL OF DRAIN PIPE UNDER DR 218 FT
NE +18 FT SE C/L INT SAN JOSE HILLS RD +CAMERON AVE MKD (BM)
(COVINA --1965) ELEV. 696.238

It is expected that this general adjustment will, for the most part, remain sound for the next 8 to 12 years. As new circuits are completed, however, re-adjustment of individual quads may become advisable. It is expected that these subsequent adjustments will be in the nature of a few hundredths of a foot. When a quad is re-adjusted, new elevation lists will be published and the date of the re-adjustment will replace the "1965" at the end of the bench mark description. Two bench marks in the same quad with different adjustment dates will not normally join each other. Since all adjustments taper out to nothing at the periphery of the quad, any bench mark in one quad will join any bench mark in another quad regardless of their respective adjustment dates.

The basic accuracy of the net is reflected by an indicated field probable error of plus or minus 0.012 foot per mile of leveling as determined from 298 conditions of closure. However, many years experience in vertical control in the greater Los Angeles basin and Antelope Valley indicate that because of varying degrees of subsidence and heaving, the true datum is recovered only by obtaining substantial agreement of a number of bench marks.

The users of this net are invited to assist in its maintenance by notifying this Department of cases of obliteration, apparent mistakes in descriptions or elevations, and proven disturbance of bench marks.

DATUM: U. S. Coast and Geodetic Survey Sea Level Datum
of 1929, through the medium of the Los Angeles
County Engineer Precise Level Net, 1963 Adjust-
ment.

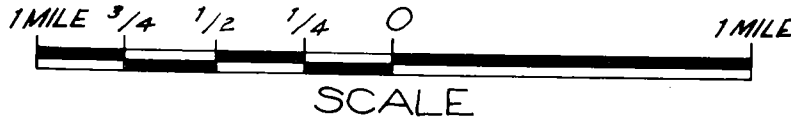
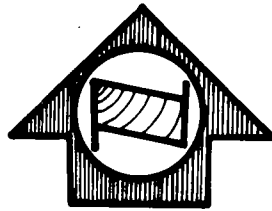
Abbreviations Used in Bench Mark Listings

ABUT--Abutment	L+BN--Lead and Bench Mark Nail
ANG PT--Angle Point	L+BR--Lead and Brad
BC--Beginning of Curve	L+N--Lead and Nail
BCR--Beginning of Curb Return	L+PK--Lead and PK Nail
BLDG--Building	L+SPK--Lead and Spike
BT SPK--Boat or Bolt Spike	L+T--Lead and Tack
CB RET--Curb Return	MCR--Middle of Curb Return
C/L INT--Center Line Intersection	MKD--Marked
C/L PROD--Center Line Produced	NR--Near
COE--Corps of Engineers	OPP--Opposite
CONC--Concrete	PI--Point of Intersection
CS MON--County Surveyor Monument	PK+W--PK Nail and Washer
CS BR CAP--County Surveyor Brass Cap Monument	P/L--Property Line
CT SPK--Cut Spike	P O S T--Point on Semi-tangent
CTR--Center	PP--Power Pole
DN--Down	PVMT--Pavement
DR--Driveway	R D--Road Department
EC--End of Curve	RDBM--Road Department Bench Mark
ENT--Entrance	RR--Railroad
FC--Flood Control (Dept. LA County)	SPK T+W--Spike, Tin and Washer
FTG--Footing	USC+GS--United States Coast and Geodetic Survey
HDWL--Headwall	USGS--United States Geological Survey
HSE--House	WK--Walk
IP--Iron Pipe	±--Plus or Minus
LACE--Los Angeles City Engineer	+--And

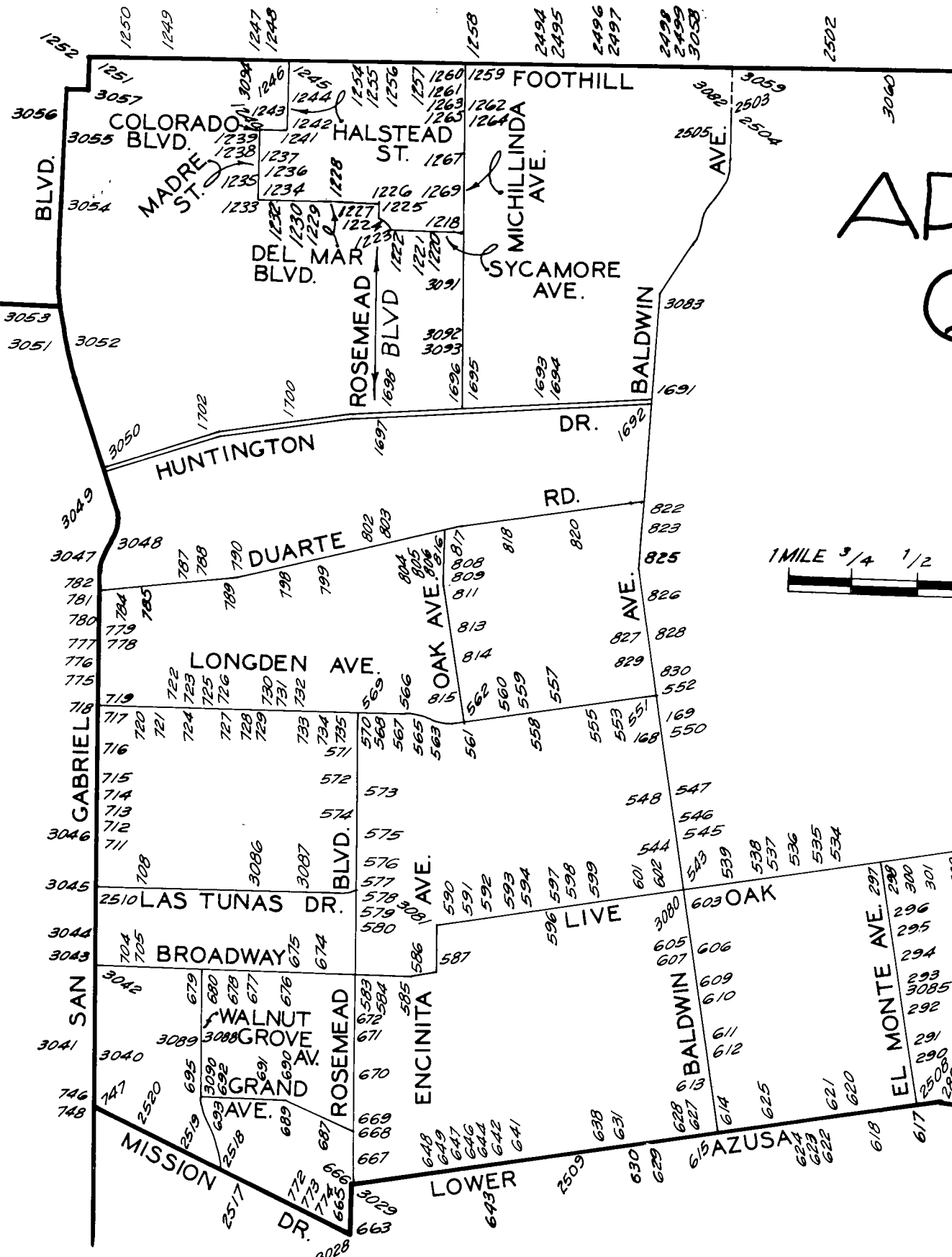
QUAD

ARCADIA QUAD

QUAD



PASADENA QUAD



AC

ROSEMEAD QUA

1

QUAD-YEAR	ELEV	DESCRIPTION (INCLUDE QUAD AND YEAR IN DESCRIPTION)	BM NUMBER
BASELINE (1965)	331.672	L+T MCR @ NW COR OUT + HEMLOCK ST	BG <u>154</u>
BASELINE (1965)	352.326	L+BN 3FT S BCR @ S OUT PECK RD + LIVE OAK AVE	BG <u>160</u>
BASELINE (1965)	352.698	CS MON 215FT W C/L PECK OUT 30FT N C/L LIVE OAK AVE	BG <u>163</u>
ARCADIA (1965)	420.880	USC+GS MON TOP OUT POST 25FT E C/L BALDWIN AVE + 32 OUT C/L WALNUT AVE MKD (RM2)	BG <u>168</u>
ARCADIA (1965)	422.930	USC+GS MON TOP OF CONC OUT 25FT E C/L BALDWIN AVE + 133FT N OUT WALNUT AVE MKD (RM2)	BG <u>169</u>
ARCADIA (1965)	358.842	L+T 1FT E OF END OF CB @ SE COR PECK RD + LONC DEN AVE 90FT E + 38FT S C/L INT	BG <u>170</u>
BASELINE (1965)	304.485	BT SPK E CB 8FT N BCR @ NE COR LOWER AZUSA RD + EL MONTE AVE	BG <u>289</u>
ARCADIA (1965)	309.653	BT SPK E CB EL MONTE AVE 18FT N CONC DR TO HSE NO 4850 28FT E C/L 500FT N LOWER AZUSA RD MKD (TE 466)	BG <u>290</u>
ARCADIA (1965)	314.613	BT SPK E CB 17FT S BCR @ SE COR GRAND AVE + EL MONTE AVE MKD (TE 465)	BG <u>291</u>
ARCADIA (1965)	323.120	BT SPK E CB EL MONTE AVE 475FT S FREER ST MKD (TE 462)	BG <u>292</u>
ARCADIA (1965)	326.771	BT SPK W CB 10FT S BCR @ SW COR FREER ST + EL MONTE AVE MKD (TE 461)	BG <u>293</u>
ARCADIA (1965)	332.561	BT SPK E CB EL MONTE AVE 28FT E C/L + 28FT S C/L PROD OLIVE ST MKD (TE 459)	BG <u>294</u>
ARCADIA (1965)	337.849	BT SPK E CB 9FT S BCR @ SE COR EL MONTE AVE + DAINES DR MKD (TE 551)	BG <u>295</u>
ARCADIA (1965)	341.022	BT SPK W CB EL MONTE AVE 7FT S C/L PROD DANBURY ST MKD (TE 553)	BG <u>296</u>
ARCADIA (1965)	350.865	BT SPK S CB 6FT OUT BCR @ SW COR LIVE OAK AVE + EL MONTE AVE MKD (TE 516)	BG <u>297</u>
ARCADIA (1965)	350.822	BT SPK S CB 8FT E BCR @ SE COR LIVE OAK AVE + EL MONTE AVE MKD (TE 517)	BG <u>298</u>
ARCADIA (1965)	351.147	PKSCB 5FT E BCR @ SE COR PERSIMMON AVE + LIVE OAK AVE	BG <u>300</u>
ARCADIA (1965)	351.883	BT SPK 6FT W BCR @ SW COR MC CULLOCH AVE + LIVE OAK AVE MKD (TE 520)	BG <u>301</u>
ARCADIA (1965)	352.243	BT SPK 8FT W BCR @ SW COR WELAND AVE + LIVE OAK AVE MKD (TE 522)	BG <u>302</u>
ARCADIA (1965)	348.895	BT SPK 5FT OUT BCR @ SW COR DOUBLE DRIVE + LIVE OAK AVE MKD (TE 524)	BG <u>303</u>
ARCADIA (1965)	348.746	BT SPK S CB LIVE OAK AVE 20FT W C/L PROD LOUISE AVE MKD (TE 526)	BG <u>304</u>
ARCADIA (1965)	348.004	BT SPK 4FT W BCR @ SW COR MYRTUS AVE + LIVE OAK AVE MKD (TE 527)	BG <u>305</u>
ARCADIA (1965)	343.691	SPK IN S OUT LIVE OAK AVE 10FT E CB RET @ SE COR FARNA AVE OUT + 57FT E C/L INT CB MKD (TE 873)	BG <u>308</u>

QUAD-YEAR	ELEV	DESCRIPTION (INCLUDE QUAD AND YEAR IN DESCRIPTION)	BM NUMBER
ARCADIA (1965)	344.984	L+T IN S CB LIVE OAK AVE 8FT W BCR @ SW COR HEMPSTEAD AVE (1965)	BG 309
ARCADIA (1965)	346.903	L+T 4FT W BCR @ SW COR CENTER AVE + LIVE OAK AVE	BG 312
ARCADIA (1965)	347.332	L+BN 5FT E BCR @ SW COR NINTH AVE + LIVE OAK AVE	BG 313
ARCADIA (1965)	347.804	PK N CB SERVICE RD LIVE OAK AVE C/L PROD 10TH AVE + 105FT W C/L HODGES AVE	BG 314
ARCADIA (1965)	347.684	L+T 1FT E BCR SERVICE RD @ SE COR EISENHOWER AVE + LIVE OAK AVE	BG 315
ARCADIA (1965)	349.503	L+T S CB LIVE OAK AVE 1FT W ISLAND BCR @ SW COR MAYFLOWER AVE 38FT S + 35FT W C/L INT	BG 316
ARCADIA (1965)	351.920	L+T 1FT W BCR @ SW COR LYND AVE + LIVE OAK AV	BG 317
ARCADIA (1965)	356.171	L+PK W CB 6FT N BCR @ NW COR LONGLEY WAY + LIVE OAK AVE MKD (TE 513)	BG 534
ARCADIA (1965)	359.916	L+PK E CB 5FT N BCR @ NE COR WARREN WAY + LIVE OAK AVE MKD (TE 512)	BG 535
ARCADIA (1965)	362.376	L+PK W CB 6FT N BCR @ NW COR CAROLINE WAY + LIVE OAK AVE MKD (TE 510)	BG 536
ARCADIA (1965)	363.643	L+SPK E CB 9FT N BCR @ NE COR HOLLY AVE + LIVE OAK AVE MKD (TE 508)	BG 537
ARCADIA (1965)	366.561	PK W CB 5FT N BCR @ NW COR WINTHROP AVE + LIVE OAK AVE MKD (TE 507)	BG 538
ARCADIA (1965)	369.742	PK W CB 5FT N BCR @ NW COR BRADFORD AVE + LIVE OAK AVE MKD (TE 506)	BG 539
ARCADIA (1965)	375.781	SPK E C LIVE OAK AVE BCR @ NE COR BALDWIN AVE + LIVE OAK AVE	BG 543
ARCADIA (1965)	383.030	PK+W W CB 5FT BCR @ SW COR BALDWIN AVE + WORKMAN AVE	BG 544
ARCADIA (1965)	387.973	L+BN S CB LAS TUNAS DR 15FT E BCR @ SE COR BALDWIN AVE 80FT E + 95FT S C/L INT	BG 545
ARCADIA (1965)	390.098	L+SPK E C LAS TUNAS DR BCR @ NE COR BALDWIN AVE + LAS TUNAS DR	BG 546
ARCADIA (1965)	394.266	L N+W S C WOODRUFF AVE BCR @ SE COR BALDWIN AVE + WOODRUFF AVE TO THE E	BG 547
ARCADIA (1965)	398.576	PK+W W CB 5FT S C @ SW COR BALDWIN AVE + WOODRUFF AVE TO THE E MKD (TE 89)	BG 548
ARCADIA (1965)	418.518	L+SPK E CB 10FT S BCR @ SE COR BALDWIN AVE + WALNUT AVE	BG 550
ARCADIA (1965)	427.333	L+BN W CB 6FT S BCR @ SW COR BALDWIN AVE + LONGDEN AVE MKD (TE 22)	BG 551
ARCADIA (1965)	428.255	PK+W E CB 5FT N BCR @ NE COR BALDWIN AVE + LONGDEN AVE MKD (TE 23)	BG 552
ARCADIA (1965)	430.606	L+T CONC DR TO HSE NO 9846 1FT E OF W EDGE + 8FT S OF N EDGE + 25FT S C/L LONGDEN AVE	BG 553

QUAD-YEAR	ELEV	DESCRIPTION (INCLUDE QUAD AND YEAR IN DESCRIPTION)	BM NUMBER
ARCADIA (1965)	433.457	L+T @ SE COR OF CONC WK TO HSE NO 6303 62FT W C/L GOLDEN WEST AVE + 30FT N C/L LONGDEN AVE	BG 555
ARCADIA (1965)	437.013	L+BN N CB OF LONGDEN AVE 18FT N C/L 3FT W OF CONC APRON OF DR TO HSE NO 9651 + 330FT W KAUFFMAN AVE	BG 557
ARCADIA (1965)	437.988	L+SPK E CB 9FT S BCR @ SE COR TEMPLE CITY BLVD + LONGDEN AVE	BG 558
ARCADIA (1965)	439.408	L+N W CB 1FT N BCR @ NW COR LONGDEN AVE + TEMPLE CITY BLVD	BG 559
ARCADIA (1965)	442.792	L+BN N CB OF LONGDEN AVE 18FT N C/L 15FT E OF DR TO GIRL SCOUTS BLDG NO 9509 + 300FT W PRIMROSE AVE	BG 560
ARCADIA (1965)	447.257	L+SPK S CB 10FT E BCR @ SE COR OAK AVE + LONGDEN AVE MKD (TE 118)	BG 561
ARCADIA (1965)	448.318	L+T E CB 6FT N BCR @ NE COR OAK AVE + LONGDEN AVE	BG 562
ARCADIA (1965)	449.170	L+SPK W CB ENCINITA AVE 18FT W C/L 15FT S OF END OF CB + 40FT S C/L PROD LONGDEN AVE FRONT OF HSE NO 6261 MKD (TE 119)	BG 563
ARCADIA (1965)	456.635	L+BN W CB 12FT S OF END OF CB 40FT S + 15FT W C/L INT LONGDEN AVE + LOMA AVE MKD (TE 145)	BG 565
ARCADIA (1965)	459.892	L+BN OUT CB RET @ NW COR LONGDEN AVE + LIMA AVE	BG 566
ARCADIA (1965)	458.465	L+BN E CB 5FT S OF END OF CB 35FT S C/L LONGDEN AVE @ SE COR HART AVE MKD (TE 144)	BG 567
ARCADIA (1965)	457.235	L+BN E CB 4FT S OF END OF CB 35FT S C/L LONGDEN AVE @ SE COR SULTANA AVE MKD (TE 143)	BG 568
ARCADIA (1965)	461.771	L+BN E CB 1FT N BCR @ NE COR ROSEMEAD BLVD + LONGDEN AVE	BG 569
ARCADIA (1965)	459.990	L+SPK E CB 5FT S BCR @ SE COR ROSEMEAD BLVD + LONGDEN AVE MKD (TE 142)	BG 570
ARCADIA (1965)	449.760	L+BN W CB ROSEMEAD AVE 2FT N OF DR TO HSE NO 6165 800FT S LONGDEN AVE	BG 571
ARCADIA (1965)	438.368	L+BN N CB 3FT W BCR @ NW COR ROSEMEAD BLVD + GARIBALDI AVE	BG 572
ARCADIA (1965)	436.907	BT SPK IN E CB 6FT S BCR @ SE COR ROSEMEAD BLVD + GARIBALDI AVE MKD (TE 139)	BG 573
ARCADIA (1965)	427.732	L+BN IN W CB ROSEMEAD BLVD 1FT N OF CONC DR TO HSE NO 5947 MIDWAY BET GARIBALDI AV + HERMOSA DR	BG 574
ARCADIA (1965)	420.672	L+SPK E CB 10FT N BCR @ NE COR ROSEMEAD BLVD + HERMOSA DR MKD (TE 137)	BG 575
ARCADIA (1965)	412.633	L+SPK E CB 6FT S BCR @ SE COR ROSEMEAD BLVD + ELM AVE MKD (TE 136)	BG 576
ARCADIA (1965)	408.872	L+SPK E CB 29FT N BCR @ NE COR ROSEMEAD BLVD + LAS TUNAS DR MKD (TE 135)	BG 577

QUAD-YEAR	ELEV	DESCRIPTION (INCLUDE QUAD AND YEAR IN DESCRIPTION)	BM NUMBER
ARCADIA (1965)	406.628	L+T S CB 42FT E BCR @ SE COR ROSEMEAD BLVD + LAS TUNAS DR	BG 578
ARCADIA (1965)	405.319	BT SPK E CB ROSEMEAD BLVD 5FT S OF S BCR OF OF 1ST ALLEY S OF LAS TUNAS DR MKD (TE785)	BG 579
ARCADIA (1965)	400.786	L+SPK E CB ROSEMEAD BLVD 50FT N C/L PROD LIVE OAK AVE IN FRONT OF BLDG NO 5650 MKD (TE 783)	BG 580
ARCADIA (1965)	386.065	L+BN CTR OF OUT @ SE COR ROSEMEAD BLVD + BROADWAY + 44FT E/O C/L INT	BG 583
ARCADIA (1965)	380.306	L+T NR E EDGE OF CONC WK TO HSE NO 9040 @ SW COR SULTANA AVE + BROADWAY 75FT W + 35FT S C/L INT	BG 584
ARCADIA (1965)	374.342	L+SPK CONC WK HSE NO 9144 10FT E OF W END + 1FT S OF N EDGE 55FT E + 35FT S C/L INT LOMA AVE + BROADWAY	BG 585
ARCADIA (1965)	370.837	L+SPK W CB 4FT S BCR @ SW COR ENCINITA AVE + BROADWAY MKD (TE 62)	BG 586
ARCADIA (1965)	373.397	L+SPK S EDGE DD CONC WK TO HSE NO 9205 15FT E OF W END @ NE COR ENCINITA AVE + BROADWAY 30FT E + 75FT N C/L INT	BG 587
ARCADIA (1965)	386.616	L+SPK E CB RIO HONDO AVE 15FT E C/L 20FT N OF END OF CB + 45FT N C/L LIVE OAK AVE MKD (TE 24)	BG 590
ARCADIA (1965)	387.103	L+SPK W CB ALESSANDRO AVE 32FT N OF END OF CB + 62FT N C/L LIVE OAK AVE MKD (TE 25)	BG 591
ARCADIA (1965)	386.113	L+SPK W CB OAK AVE 20FT N OF END OF CB + 50FT N C/L LIVE OAK AVE MKD (TE 26)	BG 592
ARCADIA (1965)	384.356	L+SPK W CB CLOVERLY AVE 15FT N OF END OF CB + 45FT N C/L LIVE OAK AVE MKD (TE 27)	BG 593
ARCADIA (1965)	383.629	L+SPK W CB PRIMROSE AVE 12FT N OF END OF CB + 42FT N C/L LIVE OAK AVE MKD (TE 28)	BG 594
ARCADIA (1965)	379.855	CS MON C/L INT LIVE OAK AVE + TEMPLE CITY BLVD	BG 596
ARCADIA (1965)	381.745	L+SPK E CB 35FT N BCR @ NE COR TEMPLE CITY BLVD + LIVE OAK AVE MKD (TE 30)	BG 597
ARCADIA (1965)	381.035	L+BN E CB CAMELLIA AVE 50FT N OF END OF CB + 80FT N C/L LIVE OAK AVE	BG 598
ARCADIA (1965)	380.058	L+SPK W CB KAUFFMAN AVE 40FT N OF END OF CB + 70FT N C/L LIVE OAK AVE MKD (TE 32)	BG 599
ARCADIA (1965)	377.274	L+SPK E CB AGNES AVE 20FT E + 50FT N C/L INT @ LIVE OAK AVE 20FT N OF END CB-MKD (TE 35)	BG 601
ARCADIA (1965)	374.640	L+SPK E CB ROWLAND AVE 20FT E + 50FT N C/L INT @ LIVE OAK AVE 25FT N OF END CB-MKD (TE 36)	BG 602
ARCADIA (1965)	369.254	L+T W CB 1FT S BCR @ SW COR BALDWIN AVE + DUFFY ST	BG 603
ARCADIA (1965)	361.351	L+T W CB 1FT S BCR @ SW COR BALDWIN AVE + BROADWAY	BG 605

QUAD-YEAR	ELEV	DESCRIPTION (INCLUDE QUAD AND YEAR IN DESCRIPTION)	BM NUMBER
ARCADIA (1965)	357.456	CS MON @ C/L INT BALDWIN AVE + DAINES DR	BG 606
ARCADIA (1965)	357.749	L+T W CB 1FT S BCR @ SW COR BALDWIN AVE + DAINES DR 40FT W. + 40FT S C/L INT	BG 607
BASELINE (1965)	316.898	USC+GS BR CAP MON IN CONC TRAFFIC SIGNAL BASE 45FT N C/L LOWER AZUSA RD + 22FT E C/L BALDWIN AVE MKD (X-1142-1961)	BG <u>614</u>
BASELINE (1965)	313.592	R D MON @ C/L INT BALDWIN AVE + LOWER AZUSA RD	BG 615
BASELINE (1965)	303.555	L+T IN CTR OF (OUT) SE COR LOWER AZUSA RD + EL MONTE AVE	BG <u>617</u>
BASELINE (1965)	304.023	L+SPK N CB 12FT E BCR @ NE COR LOWER AZUSA RD + DOREEN AVE	BG 618
BASELINE (1965)	304.636	L+SPK N CB 3FT E BCR @ NE COR LOWER AZUSA RD + HALIFAX RD MKD (TE 471)	BG 620
BASELINE (1965)	305.363	L+SPK N CB 5FT E BCR @ NE COR LOWER AZUSA RD + HALLOWELL AVE MKD (TE 473)	BG 621
BASELINE (1965)	306.051	L+SPK E CB 8FT S BCR @ SE COR ARDEN DR + LOWER AZUSA RD MKD (TE 474)	BG <u>622</u>
BASELINE (1965)	306.571	L+SPK S CB 8FT W BCR @ SW COR LOWER AZUSA RD + ARDEN DR MKD (TE 475)	BG <u>623</u>
BASELINE (1965)	306.905	L+SPK S CB LOWER AZUSA RD 55FT E C/L PROD GLICKMAN AVE 8FT E OF W DR TO CHARLES E GIDLEY SCHOOL MKD (TE 476)	BG 624
BASELINE (1965)	310.174	L+SPK E CB 5FT N BCR @ NE COR LOWER AZUSA RD + BIRCHLAND PL MKD (TE 477)	BG 625
BASELINE (1965)	316.426	L+T N CB LOWER AZUSA RD ON C/L PROD ROWLAND AVE 68FT W C/L WILLMONTE AV	BG 627
BASELINE (1965)	315.744	L+SPK N CB 5FT E BCR @ NE COR AGNES AVE + LOWER AZUSA RD MKD (TE 10)	BG 628
BASELINE (1965)	313.876	L+T WK 40FT S C/L LOWER AZUSA RD ON C/L PROD GOLDEN WEST AVE	BG 629
BASELINE (1965)	312.215	L+SPK S CB 5FT E BCR @ SE COR ELLIS LN + LOWER AZUSA RD	BG 630
BASELINE (1965)	312.735	L+T N CB LOWER AZUSA RD 40FT W C/L PROD ELLIS LN IN FRONT OF HSE NO 9667	BG 631
BASELINE (1965)	314.762	L+T N CB 1FT W BCR @ NE COR LOWER AZUSA RD + TEMPLE CITY BLVD	BG 638
BASELINE (1965)	316.781	L+SPK N CB 6FT W BCR @ NW COR HELEO AVE + LOWER AZUSA RD MKD (TE 22)	BG 641
BASELINE (1965)	318.380	L+T N CB LOWER AZUSA RD 80FT W CONC DR TO HSE NO 9371 1FT E OF END CB 420FT E RIO HONDO AVE	BG 642
BASELINE (1965)	318.007	R D MON ON C/L LOWER AZUSA RD @ ANG PT 420FT E RIO HONDO AVE	BG 643
BASELINE (1965)	330.760	USC+GS BR CAP MON IN W CONC ABUTMENT @ SW COR OF LOWER AZUSA RD BRIDGE NO B 1053 OVER EATON CN WASH 34FT S C/L LOWER AZUSA RD + 200FT W C/L RIO HONDO AVE MKD (BM S 1142-1961)	BG 644

QUAD-YEAR	ELEV	DESCRIPTION (INCLUDE QUAD AND YEAR IN DESCRIPTION)	BM NUMBER
BASELINE (1965)	327.842	L+BN S CB LOWER AZUSA RD 40FT W C/L SPRR + E OF ENCINITA AVE	BG 646
BASELINE (1965)	324.106	L+SPK IN N CB 6FT E BCR @ NE COR LOWER AZUSA RD + ENCINITA AVE MKD (WM254-A)	BG 647
BASELINE (1965)	323.761	L+T N CB 1FT W BCR @ NW COR LOWER AZUSA RD + ENCINITA AVE	BG 648
BASELINE (1965)	322.153	CS MON @ C/L INT LOWER AZUSA RD + ENCINITA AVE	BG 649
BASELINE (1965)	331.070	CS MON C/L MISSION DR 80FT E C/L ROSEMEAD BLVD	BG 663
BASELINE (1965)	332.921	L+T MCR @ W COR MISSION DR + ROSEMEAD BLVD	BG 665
BASELINE (1965)	336.471	L+T W CB ROSEMEAD BLVD 50FT S C/L PROD LOWER AZUSA RD	BG 666
ARCADIA (1965)	341.588	L+T W CB ROSEMEAD BLVD W SERVICE RD 55FT N OF ENT TO ALHAMBRA SANATORIUM NO 4619 13FT N PP NO 733059E	BG 667
ARCADIA (1965)	348.233	L+SPK W CB 6FT S BCR @ SW COR ROSEMEAD BLVD W SERVICE RD + GRAND AVE MKD (WM 3)	BG 668
ARCADIA (1965)	353.020	L+BN 1FT UP IN S WALL @ W END SPRR BRIDGE OVER ROSEMEAD BLVD 70FT N C/L GRAND AVE	BG 669
ARCADIA (1965)	362.428	L+T IN W CB ROSEMEAD BLVD (W SERVICE RD) ON C/L PENTLAND ST PROD FROM E 80FT W C/L ROSEMEAD BLVD	BG 670
ARCADIA (1965)	373.646	L+SPK E CB 10FT N BCR @ NE COR SERENO DR + ROSEMEAD BLVD (TE 776)	BG 671
ARCADIA (1965)	382.757	FC DISC IN CONC WK NE COR BRIDGE NO 53- 329 OVER EATON WASH 4FT S BCR @ SE COR ROSEMEAD BLVD + OLIVE ST	BG 672
ARCADIA (1965)	394.019	CS MON @ WET @ C/L INT BROADWAY + ACACIA ST MKD (CO SUR)	BG 674
ARCADIA (1965)	395.169	L+T W CB MUSCATEL AVE 8FT N OF END CB + 40FT N C/L BROADWAY	BG 675
ARCADIA (1965)	395.424	L+T W CB MUSCATEL AVE 15FT S OF END CB 80FT S OF C/L BROADWAY	BG 676
ARCADIA (1965)	399.519	L+T S CB 1FT E BCR @ SE COR BROADWAY + LA PRESA AVE (BURTON AVE)	BG 677
ARCADIA (1965)	400.024	CS MON 12IN DN ON C/L BROADWAY 30FT E OF W P/L EDISON TRANSMISSION LINES MKD (CO ENG RE 3363)	BG 678
ARCADIA (1965)	399.573	L+T S EDGE CONC WK 5FT FROM END 30FT S C/L BROADWAY 35FT W C/L WALNUT GROVE	BG 679
ARCADIA (1965)	398.491	L+T N EDGE CONC DR @ SW COR BROADWAY + WALNUT GROVE AVE 133FT S + 35FT W C/L INT	BG 680
ARCADIA (1965)	351.433	SPK NEAR S EDGE CONC WALK TO HSE NO 4756 38FT E C/L IVAR AVE + 100FT S C/L GRAND AVE (MKD WM 297)	BG 687

MAY 1968

LOS ANGELES COUNTY ROAD DEPARTMENT
SURVEY SECTION FIELD ENGINEERING DIVISION

PAGE

QUAD-YEAR	ELEV	DESCRIPTION (INCLUDE QUAD AND YEAR IN DESCRIPTION)	BM	NUMBER
ARCADIA (1965)	361.376	CS MON @ PI OF GRAND AVE 6FT E C/L MUSCATEL AVE	BG	689
ARCADIA (1965)	361.536	CS MON @ C/L INT GRAND AVE + MUSCATEL AVE	BG	690
ARCADIA (1965)	367.573	L+T S CB 1FT W BCR @ SW COR GRAND AVE + BARTLETT AVE	BG	691
ARCADIA (1965)	369.421	CS MON W P/L OF OUT R/W 135FT E C/L INT HALKETT AVE	BG	692
ARCADIA (1965)	371.220	L+T S CB 1FT E BCR @ SE COR GRAND AVE + HALKETT AVE	BG	693
ARCADIA (1965)	372.067	SPK N CB GRAND AVE 4FT E C/L PROD WILLARD AVE 5FT W OF END OF CB MKD (WM 401)	BG	695
ARCADIA (1965)	398.385	L+T W CB 3FT N BCR @ NW COR CHARLOTTE AVE + BROADWAY	BG	704
ARCADIA (1965)	398.332	L+T E CB CHARLOTTE AVE 3FT N OF BCR @ NE COR C/L INT @ BROADWAY	BG	705
ARCADIA (1965)	416.779	L+SPK N CB 22FT E BCR @ NE COR LAS TUNAS DR + CHARLOTTE AVE MKD (BM 216)	BG	708
ARCADIA (1965)	446.949	SPK S CB 6FT E BCR @ SE COR HERMOSA DR + SAN GABRIEL BLVD MKD (BM 224)	BG	711
ARCADIA (1965)	451.668	SPK E CB 6FT S BCR @ SE COR SAN GABRIEL BLVD + LESLIE DR MKD (BM 225)	BG	712
ARCADIA (1965)	456.846	L+T S CB 2FT E BCR @ SE COR SAN GABRIEL BLVD + SANTA YNEZ ST MKD (BM 3A)	BG	713
ARCADIA (1965)	461.729	L+T S CB 3FT E BCR @ SE COR BEVAN ST + SAN GABRIEL BLVD MKD (BM 4A)	BG	714
ARCADIA (1965)	466.519	SPK E CB 6FT S BCR @ SE COR GARIBALDI AVE + SAN GABRIEL BLVD MKD (BM 226)	BG	715
ARCADIA (1965)	472.907	SPK E CB 12FT N BCR @ NE COR OF SAN GABRIEL BLVD + BEVERLY DR MKD (TE 621)	BG	716
ARCADIA (1965)	483.044	SPK E CB SAN GABRIEL BLVD 15FT S BCR @ SE COR LONGDEN AVE	BG	717
ARCADIA (1965)	483.195	RD MON @ C/L INT SAN GABRIEL BLVD + LONGDEN AVE	BG	718
ARCADIA (1965)	483.139	L+T S CB 19FT E CB RET @ SE COR LONGDEN AVE + SAN GABRIEL BLVD MKD (BM 7-A)	BG	719
ARCADIA (1965)	475.869	SPK S CB LONGDEN AVE 5FT E C/L PROD CHARLOTTE AVE MKD (TE 612)	BG	720
ARCADIA (1965)	474.393	SPK S CB LONGDEN AVE 5FT W C/L PROD LONGMONT AVE MKD (TE 611)	BG	721
ARCADIA (1965)	469.308	L+T N CB 1FT E BCR @ NE COR LONGDEN AVE + DEL LOMA AVE	BG	722
ARCADIA (1965)	468.139	L+SPK N CB 5FT OUT @ NW COR LONGDEN AVE + WILLARD AVE MKD (TE 610)	BG	723
ARCADIA (1965)	467.782	L+BN S CB 1FT E BCR @ SE COR LONGDEN AVE + WILLARD AVE	BG	724

QUAD-YEAR	ELEV	DESCRIPTION (INCLUDE QUAD AND YEAR IN DESCRIPTION)	BM NUMBER
ARCADIA (1965)	469.306	L+BN N CB 1FT W BCR @ NW COR LONGDEN AVE + DEERFIELD AVE MKD (TE 608)	BG 725
ARCADIA (1965)	470.495	L+BN N CB 5FT W BCR @ NW COR LONGDEN AVE + VISTA ST TO THE N	BG 726
ARCADIA (1965)	469.438	L+BN E CB 1FT S BCR @ SE COR LONGDEN AVE + BIDN AVE MKD (TE 607)	BG 727
ARCADIA (1965)	471.802	FC DISC IN SE COR CONC FOUNDATION TO POWER TRANSMISSION TOWER 10 TO -5 50FT S C/L LONGDEN AVE + 65FT W C/L BURTON AVE TO S MKD (59-39)	BG 728
ARCADIA (1965)	469.410	L+SPK E CB BURTON AVE 12FT S OF END OF CB 42FT S C/L LONGDEN AVE MKD (TE 606)	BG 729
ARCADIA (1965)	469.952	FC BR TAG IN W CB LEMON AVE 6FT N OF END OF CB 70FT N C/L LONGDEN AVE MKD (TE 605)	BG 730
ARCADIA (1965)	468.708	L+SPK N CB 10FT W BCR @ NW COR LONGDEN AVE + AVON AVE MKD (E 604)	BG 731
ARCADIA (1965)	467.839	L+SPK N CB 10FT W BCR @ NW COR LONGDEN AVE + MUSCATEL AVE MKD (TE 603)	BG 732
ARCADIA (1965)	467.070	L+SPK W CB MUSCATEL AVE 15FT S OF END CB 48FT S C/L LONGDEN AVE MKD (TE 502)	BG 733
ARCADIA (1965)	465.338	L+BN E CB IVAR AVE 9FT S OF END CB 45FT S C/L LONGDEN AVE MKD (TE 601)	BG 734
ARCADIA (1965)	463.140	L+BN E CB OF RENO AVE 6FT S OF END CB 38FT S C/L LONGDEN AVE MKD (TE 600)	BG 735
BASELINE (1965)	366.228	L+T CTR OF CB RET @ NW COR SAN GABRIEL BLVD + MISSION DR	BG 746
BASELINE (1965)	365.404	CS MON @ C/L INT SAN GABRIEL BLVD + MISSION DR	BG 747
BASELINE (1965)	365.619	L+T W CB 7FT S BCR @ SW COR SAN GABRIEL BLVD + MISSION DR	BG 748
BASELINE (1965)	345.934	SPK IN S EDGE CONC APRON TO GAS STA NO 8801 27FT N + 25FT E C/L INT MISSION DR + MUSCATEL AVE MKD (WM 44)	BG 772
BASELINE (1965)	339.065	SPK E EDGE CONC APRON TO GASE NO 8868 35FT S + 17FT W C/L INT MISSION DR + IVAR AVE 3FT S OF END OF WK	BG 773
BASELINE (1965)	336.159	SPK NR SW COR CONC APRON TO STORE NO 8923 40FT N + 20FT E C/L INT MISSION DR + IVAR AVE TO THE N	BG 774
ARCADIA (1965)	490.142	L+SPK W CB 6FT N BCR @ NW COR LOS OLIVOS DR + SAN GABRIEL BLVD MKD (TE 615)	BG 775
ARCADIA (1965)	496.335	SPK W CB 10FT N BCR @ NW COR SOMERSET PL + SAN GABRIEL BLVD MKD (TE 616)	BG 776
ARCADIA (1965)	504.142	L+SPK W CB 6FT S BCR @ SW COR SHEFFIELD RD + SAN GABRIEL BLVD MKD (TE 617)	BG 777
ARCADIA (1965)	504.559	R D MON @ C/L INT SAN GABRIEL BLVD + CLARENCE AVE	BG 778

QUAD-YEAR	ELEV	DESCRIPTION (INCLUDE QUAD AND YEAR IN DESCRIPTION)	BM NUMBER
ARCADIA (1965)	506.130	L+SPK E CB 10FT N BCR @ NE COR CLARENCE AVE E + SAN GABRIEL MKD (TE 618)	BG 779
ARCADIA (1965)	513.618	L+SPK W CB 6FT N BCR @ NW COR WOODLAWN AVE + SAN GABRIEL BLVD MKD (TE 619)	BG 780
ARCADIA (1965)	528.455	R D MON @ C/L INT DUARTE RD + SAN GABRIEL BLVD	BG 781
ARCADIA (1965)	530.651	L+SPK W CB 10FT N OUT NW COR SAN GABRIEL BLVD + DUARTE RD MKD (TE 340)	BG 782
ARCADIA (1965)	526.624	L+SPK W CB 6FT S BCR @ SW COR DUARTE RD + PROVENCE RD MKD (TE 338)	BG 784
ARCADIA (1965)	523.483	L+T S CB 1FT W BCR @ SE COR DUARTE RD + KIMDALE RD	BG 785
ARCADIA (1965)	517.716	L+SPK W CB 7FT OU @ NW COR RUTHLEE AVE + DUARTE RD MKD (TE 336)	BG 787
ARCADIA (1965)	515.722	SPK W CB VISTA ST 10FT N END CB + 45FT N C/L DUARTE RD MKD (TE 335)	BG 788
ARCADIA (1965)	509.304	L+T CONC BASE OF WALL 1FT S OF ANG PT 17FT W C/L KARIN PL + 36FT S C/L DUARTE RD	BG 789
ARCADIA (1965)	510.009	CS MON IN WELL @ C/L INT LA PRESA DR + DUARTE RD 6FT W PI OF CURVE ON C/L DUARTE RD	BG 790
ARCADIA (1965)	511.407	L+SPK E CB DR TO HSE NO 8712 32FT S + 27FT E C/L INT MUSCATEL AVE TO THE N + DUARTE RD MKD (TE 329)	BG 798
ARCADIA (1965)	515.407	L+T E CB OF DR TO HSE NO 8850 55FT S C/L DUARTE RD + 185FT E C/L MAYESDALE AVE	BG 799
ARCADIA (1965)	513.251	RDBM TAG IN N CB DUARTE RD 2FT W CB RET @ NW COR OF ROSEMEAD BLVD 40FT N + 62FT W C/L INT	BG 802
ARCADIA (1965)	512.840	L+SPK N CB 2FT E OUT COR ROSEMEAD BLVD + DUARTE RD MKD (TE 324)	BG 803
ARCADIA (1965)	510.470	L+BN E CB OF DR TO HSE NO 9066 30FT S C/L DUARTE RD 1FT OUT PILLAR	BG 804
ARCADIA (1965)	509.267	L+T IN CTR CONC DR TO HSE NO 9106 30FT S C/L DUARTE RD + 315FT W ENCINETA AVE	BG 805
ARCADIA (1965)	507.534	L+T IN W CB OAK AVE 4 OUT END OF CB @ SW COR OF DUARTE RD 20FT W + 75FT S C/L INT	BG 806
ARCADIA (1965)	495.943	L+SPK E CB 12FT S BCR @ SE COR OAK AVE + NAOMI AVE MKD (TE 352)	BG 808
ARCADIA (1965)	489.401	L+SPK E CB OAK AVE 12FT N C/L ARDENDALE AVE FRONT OF HSE NO 6734 MKD (TE 353)	BG 809
ARCADIA (1965)	482.729	L+SPK E CB OAK AVE 5FT S C/L PROD CAMINO REAL TO W MKD (TE 355)	BG 811
ARCADIA (1965)	471.712	SPK E CB OAK AVE 3FT N C/L PROD EMPEROR AVE TO W MKD (TE 357)	BG 813
ARCADIA (1965)	466.356	L+SPK E CB 2FT S BCR @ SE COR OAK AVE + LEMON AVE MKD (TE 199)	BG 814
ARCADIA (1965)	453.499	L+SPK W CB OAK AVE 35FT S C/L PROD OLEMA ST FRONT OF HSE NO 6333 MKD (TE 204)	BG 815

QUAD-YEAR	ELEV	DESCRIPTION (INCLUDE QUAD AND YEAR IN DESCRIPTION)	BM NUMBER
ARCADIA (1965)	509.469	L+T S CB DUARTE RD 18FT S C/L + 293FT E C/L OAK AVE OUT	BG 816
ARCADIA (1965)	508.412	L+SPK S CB DUARTE RD P HSE NO 1147 IN FRONT OF RESERVOIR MKD (TE 320) OUT	BG 817
ARCADIA (1965)	504.395	L+N E CB 3FT BCR @ SE COR TEMPLE CITY BLVD + DUARTE RD MKD (TE 318) OUT	BG 818
ARCADIA (1965)	478.441	L+BN E CB 10FT S BCR @ SE COR DUARTE RD + BALDWIN AVE	BG 822
ARCADIA (1965)	473.400	L+BN E CB 4FT BCR @ NE COR BALDWIN AVE + NAOMI AVE MKD (TE 311) OUT	BG 823
ARCADIA (1965)	466.948	RDBM TAG IN E CB BALDWIN AVE 50FT N CB RET @ NE COR CAMINO REAL AVE TO E 32FT E + 92FT N C/L INT	BG 825
ARCADIA (1965)	455.382	CS MON 48FT E C/L BALDWIN AVE + 11FT N C/L NORMAN AVE MKD (SD 20-5 1952 RE 63) OUT	BG 826
ARCADIA (1965)	447.929	L+BN W CB 5FT BCR @ NW COR LEMON AVE + BALDWIN AVE MKD (TE 287) OUT	BG 827
ARCADIA (1965)	445.286	L+PK E CB 5FT N BCR @ NW COR LEMON AVE + BALDWIN AVE MKD (TE 287) OUT	BG 828
ARCADIA (1965)	440.234	L+SPK N CB 5FT BCR @ NW COR BALDWIN AVE + VAL ST MKD (TE 285) OUT	BG 829
ARCADIA (1965)	434.211	L+PK E CB 5FT S BCR @ SW COR STELLA AVE + BALDWIN AVE MKD (TE 284) OUT	BG 830
ARCADIA (1965)	339.637	L+T E CB TYLER AVE ON C/L PROD DANESWOOD AVE	BG 953
ARCADIA (1965)	332.021	SPK W CB 5FT S BCR @ SW COR DAINES DR + TYLER AVE MKD (TE 534)	BG 954
ARCADIA (1965)	327.560	L+SPK W CB 8FT S BCR @ SW COR WILDFLOWER RD + TYLER AVE MKD (TE 535)	BG 955
ARCADIA (1965)	324.945	L+SPK E CB TYLER AVE 10FT S C/L PROD FREER ST MKD (TE 536)	BG 956
ARCADIA (1965)	324.153	L+T E CB 1FT S BCR @ SE COR TYLER AVE + MILOANN ST	BG 957
ARCADIA (1965)	308.762	L+BN IN W WALL OF DRAINAGE CHANNEL @ END CB 22FT W C/L TYLER AVE 127FT N OF ENT TO HONDO CERAMIC CO NO 5021 MKD SD 605)	BG 959
ARCADIA (1965)	308.127	L+N IN E WALL DRAINAGE CHANNEL 30FT W C/L TYLER AVE 55FT S OF ENT TO HONDO CERAMIC CO NO 5021 MKD (SD 601)	BG 960
BASELINE (1965)	315.266	CS MON @ C/L INT LOPEZ RD + TYLER AVE (E EDGE) OUT	BG 962
ARCADIA (1965)	601.658	CS MON 1FT W + 1FT N BCR @ NW COR MICHILLINDA AVE + SYCAMORE AVE	BG 1218
ARCADIA (1965)	615.197	L+T W EDGE CONC DR TO HSE NO 3834 SYCAMORE AVE 35FT S C/L	BG 1220
ARCADIA (1965)	618.059	L+T W EDGE CONC DR TO HSE NO 3798 SYCAMORE AVE 35FT S C/L	BG 1221

QUAD-YEAR	ELEV	DESCRIPTION (INCLUDE QUAD AND YEAR IN DESCRIPTION)	BM NUMBER
ARCADIA (1965)	623.708	L+SPK 2FT E BCR @ SE COR WALNUT DR + SYCAMORE AVE	BG 1222
ARCADIA (1965)	623.982	L+T IN CONC APRON OF DR TO HSE NO 325 WALNUT DR ON C/L PROD SYCAMORE AVE	BG 1223
ARCADIA (1965)	629.641	L+T 1FT S BCR @ SE COR MOUNTAIN VIEW AVE + ROSEMEAD BLVD	BG 1224
ARCADIA (1965)	630.943	L+T 1FT N BCR @ NE COR MOUNTAIN VIEW AVE + ROSEMEAD BLVD	BG 1225
ARCADIA (1965)	635.569	L+T E CB ROSEMEAD BLVD ON C/L PROD DEL MAR BLVD	BG 1226
ARCADIA (1965)	635.910	L+SPK 6FT W BCR @ SW COR DEL MAR BLVD + ROSEMEAD BLVD MKD (TE 2)	BG 1227
ARCADIA (1965)	642.250	L+T S EDGE CONC WK TO HSE NO 355 @ NE COR DEL MAR BLVD + BACKUS AVE 251 FT + 52FT N C/L INT	BG 1228
ARCADIA (1965)	644.187	L+T 1FT W BCR @ SE COR LOTUS AVE + DEL MAR BLVD	BG 1229
ARCADIA (1965)	645.279	L+T S CB DEL MAR BLVD 1FT W C/L RET @ SW COR LOTUS AVE 30FT S + 44FT W C/L INT	BG 1230
ARCADIA (1965)	653.904	L+T 1FT W BCR @ SW COR ALPINE ST + DEL MAR BLVD	BG 1232
ARCADIA (1965)	660.496	BT SPK 1FT S BCR @ SW COR MADRE ST + DEL MAR BLVD	BG 1233
ARCADIA (1965)	659.921	L+T 5FT E CB RET @ NE COR MADRE ST + DEL MAR BLVD	BG 1234
ARCADIA (1965)	666.502	L+T 3FT S BCR @ SE COR MILTON ST + MADRE ST	BG 1235
ARCADIA (1965)	672.456	L+T 2FT S BCR @ SE COR BRANDON ST + MADRE ST	BG 1236
ARCADIA (1965)	673.738	L+T 2FT N BCR @ NE COR BRANDON ST + MADRE ST	BG 1237
ARCADIA (1965)	678.899	L+T 6FT S BCR @ SE COR GREEN ST + MADRE ST	BG 1238
ARCADIA (1965)	685.015	BT SPK 6FT E BCR @ SE COR MADRE ST + COLORADO ST	BG 1239
ARCADIA (1965)	686.212	L+T 1FT E BCR @ NE COR MADRE ST (ALLEY) + COLORADO ST	BG 1240
ARCADIA (1965)	680.490	L+T 1FT W BCR @ NW COR HALSTEAD ST + COLORADO ST	BG 1241
ARCADIA (1965)	680.139	L+T 1FT N BCR @ NE COR HALSTEAD ST + COLORADO ST	BG 1242
ARCADIA (1965)	686.187	R D MON C/L HALSTEAD ST 500FT N C/L COLORADO ST	BG 1243
ARCADIA (1965)	694.728	BT SPK E CB HALSTEAD ST 17FT S OF S RAIL SFRR MKD (TE 24)	BG 1244
BASELINE (1965)	701.447	L+BN 1FT S BCR @ SE COR HALSTEAD ST + FOOTHILL BLVD	BG 1245