

**COUNTY OF LOS ANGELES  
ROAD DEPARTMENT**

**PRECISE  
BENCH MARK LIST**



**ARCADIA QUAD  
ROSEMEAD QUAD**

**1980 ADJUSTMENT**

P R E F A C E  
1980 Adjustment

The Road Department level net published in 1975 consisted of more than 1500 miles of levels supporting in excess of 18,000 bench marks. For reasons of economy, this 1980 adjustment is reduced to about 55% of the bench marks previously published. Reductions were made by increasing the spacing between level lines in unincorporated territory, and eliminating lines in non-contract cities and areas where the probability of future engineering projects appears slight. The 1980 adjustment is an update of the remainder of the 1975 bench marks, not including baselines. Data from previous adjustments is available without inferring any responsibility for the current reliability of the data or the actual existence of the bench marks. Elevations of bench marks with the same quad name, but different adjustment dates, are not normally compatible.

To facilitate the adjustment, indexing, and distribution of adjusted values of the net, the County territory is divided into 34 quads or areas. For identification purposes each quad is given a name, viz., "Rosemead," "La Mirada," "Santa Fe," etc. When bench marks and elevations in the Road Department net are used, the name of the quad in which the bench mark is located and the date of the elevation adjustment must be included in the bench mark description, e.g.,

CY 6901 - RDEM TAG S CB 11FT E BCR @ SE COR LA CIENEGA  
BLVD & LENNOX BLVD 32FT S & 73FT E C/L INT  
(HAWTHORNE - 1980) ELEV. 82.549

The precision of the net is reflected by an indicated field probable error of plus or minus 0.012 foot per mile of leveling as determined from over 300 conditions of closure. However, many years experience in vertical control in the greater Los Angeles basin and Antelope Valley indicate that because of varying degrees of subsidence and heaving, the true datum is recovered only by obtaining substantial agreement between a number of bench marks.

The users of this net are invited to assist in its maintenance by notifying this Department of cases of obliteration, apparent mistakes in descriptions or elevations, and proven disturbance of bench marks.

---

DATUM: U. S. Coast and Geodetic Survey Sea Level Datum  
of 1929, through the medium of the Los Angeles  
County Engineer Precise Level Net.

ABBREVIATIONS USED IN BENCH MARK LISTINGS

ABUT - - - - -	Abutment	EC - - - - -	End of Curve
ALG - - - - -	Along	ENT - - - - -	Entrance
ANG PT - - - - -	Angle Point	FL - - - - -	Floor
B/W - - - - -	Back of Walk	FTG - - - - -	Footing
BCR - - - - -	Beginning of Curb Return	FRWY - - - - -	Freeway
BC - - - - -	Beginning of Curve	F/W - - - - -	Front of Walk
BLDG - - - - -	Building	GAR - - - - -	Garage
BM - - - - -	Bench Mark	HDWL - - - - -	Headwall
BT SPK - - - - -	Boat or Bolt Spike	HSE - - - - -	House
BR CAP - - - - -	Brass or Bronze Cap	HWY - - - - -	Highway
C B - - - - -	Catch Basin	INT - - - - -	Intersection
CTR - - - - -	Center	IP - - - - -	Iron Pipe
C/L - - - - -	Center Line	LT - - - - -	Left
C/L INT - - - - -	Center Line Intersection	LACE - - - - -	L. A. City Engineer
C/L PROD - - - - -	Center Line Produced	LACS - - - - -	L. A. Co. Engineer
CONC - - - - -	Concrete	LAFC - - - - -	L. A. Co. Flood Control
COR - - - - -	Corner	L&BN - - - - -	Lead and Bench Nail
COE - - - - -	Corps of Engineers	L&BR - - - - -	Lead and Brad
CULV - - - - -	Culvert	L&N - - - - -	Lead and Nail
CYN - - - - -	Canyon	L&SPK - - - - -	Lead and Spike
CB - - - - -	Curb	L&T - - - - -	Lead and Tack
CS MON - - - - -	Co. Engineer Monument	MCR - - - - -	Middle of Curb Return
CT SPK - - - - -	Cut Spike	MKD - - - - -	Marked
DR - - - - -	Drive or Driveway	MC - - - - -	Middle of Curve
E/O - - - - -	East of	MON - - - - -	Monument
ECR - - - - -	End of Curb Return	N/O - - - - -	North of

ABBREVIATIONS USED IN BENCH MARK LISTINGS . . . CONTINUED

NR - - - - - Near  
OPP - - - - - Opposite  
PI - - - - - Point of Intersection  
PK&W - - - - - PK Nail and Washer  
P/L - - - - - Property Line  
POST - - - - - Point on Semi-Tangent  
PP - - - - - Power Pole  
PVMT - - - - - Pavement  
PROD - - - - - Produced  
RD - - - - - Road  
RDEM - - - - - Road Dept. Bench Mark  
RDEM TAG - - - - - Road Dept. Bench Mark Tag  
RR - - - - - Railroad  
RT - - - - - Right  
R/W - - - - - Right of Way  
SDMH - - - - - Storm Drain Manhole  
SMH - - - - - Sewer Manhole  
SPK - - - - - Spike  
ST&W - - - - - Spike Tin and Washer  
S/O - - - - - South of  
TP - - - - - Telephone Pole  
USC&GS - - - - - U. S. Coast and Geodetic Survey  
USGS - - - - - U. S. Geological Survey  
WK - - - - - Walk  
W/O - - - - - West of

Q U A D

2495 4132 3594 4545 4015 2502 4133 3060 1906 4134 4188 4031 4032 4187 4135 3068

JOTHILL BALDWIN BLVD

# ARCADIA QUAD

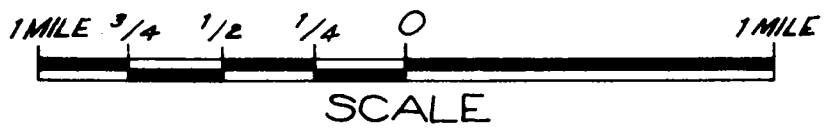
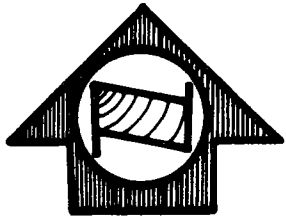
6-27-80

3072 3069 3070 3620 2642 3072 4103 2640

Q U A D

MORE DUARTE RD 2640 2639 2638 2338 2337 2336 3619

SUNSET BLVD DAD ROAD MYRTLE PECK 2332 2333 3278 2637 3617 2329 3616 3615

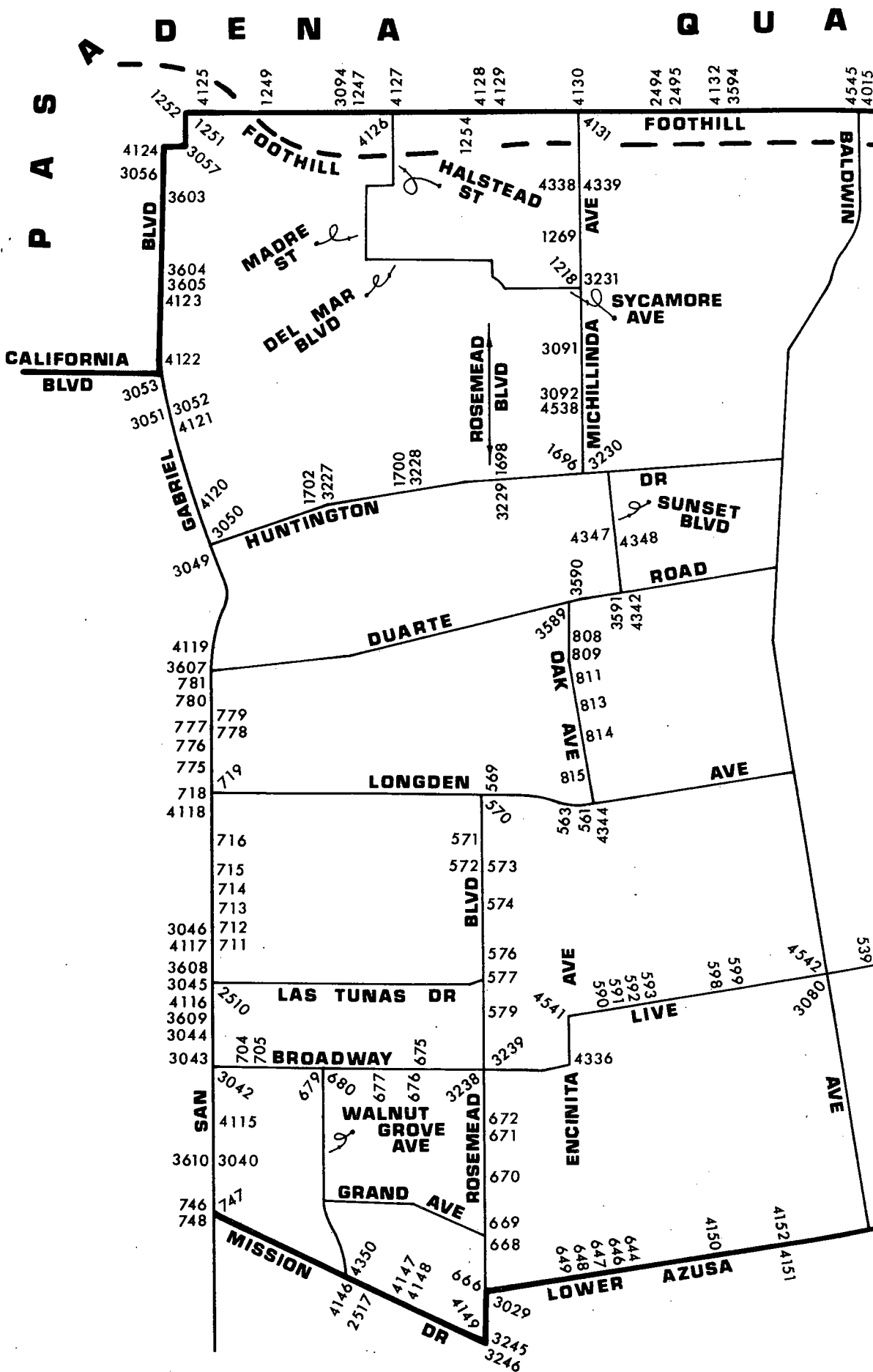


LIGHT SOLID LINES WITHOUT NUMBERS INDICATE PREVIOUS LINES OF BENCH MARKS THAT ARE NOT INCLUDED IN THE 1980 ADJUSTMENT.

534 533 536 537 539 539 4542 3080 3080 3611 625 3601 4150 4152 4151 298 3240 296 294 293 4352 292 290 2507 2506 4157 4156 3241 4155 3255 4539 4540 4161 3326 4162 3617 2329 3616 3615 2332 2333

OAK EL MONTE AVE TYLER AVE ROAD PECK ROAD

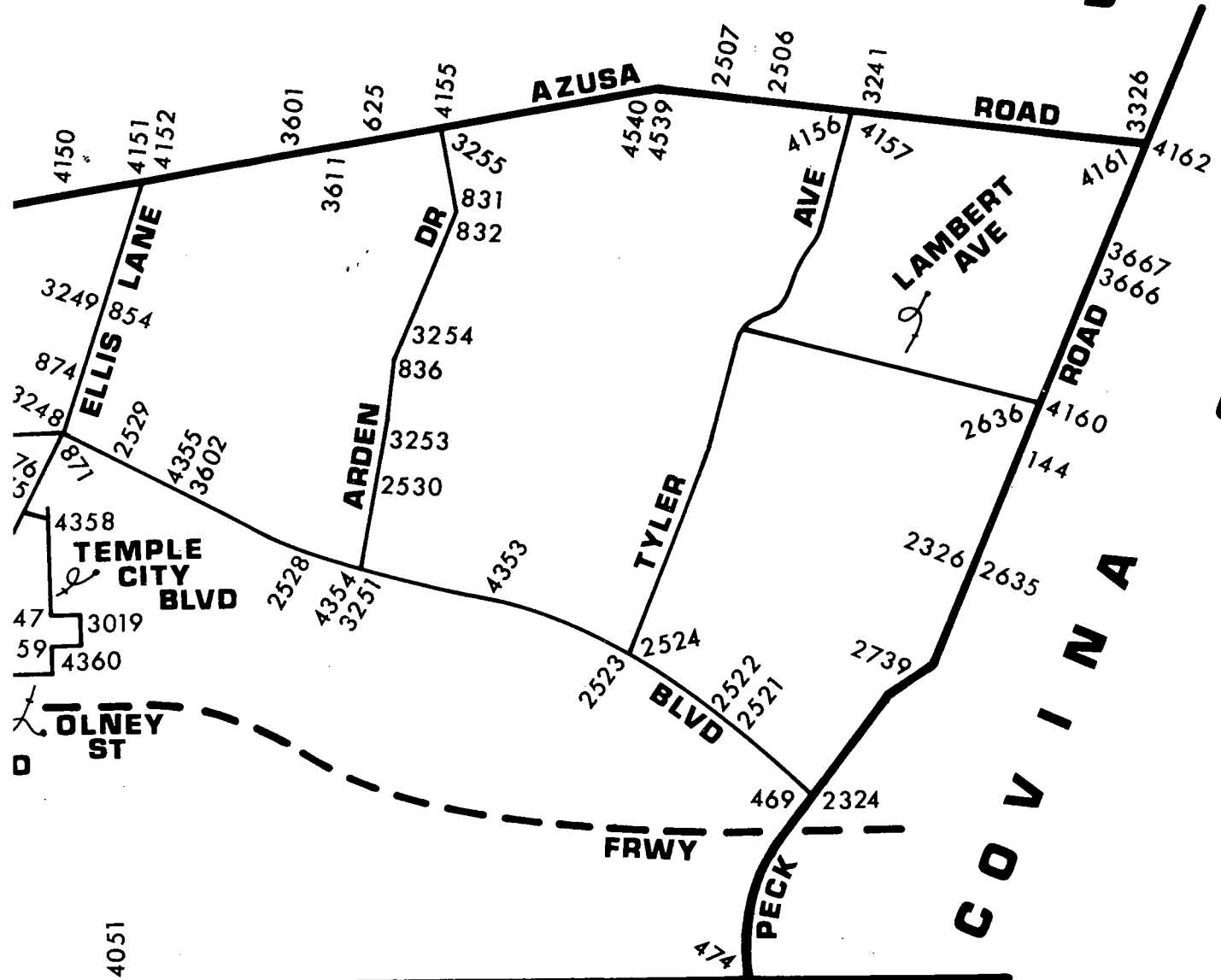
AD Q U A D C O N I N A



I A Q U A D

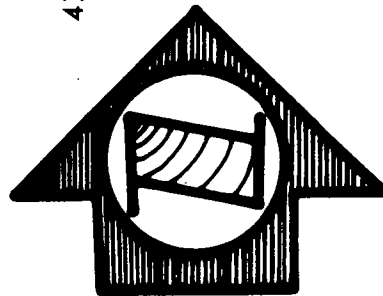
Q U A D

C O V I N A



2569 4051  
 3659  
 3660  
 3661  
 3662  
 2570  
 3663  
 3023  
 2571  
 3664  
 475

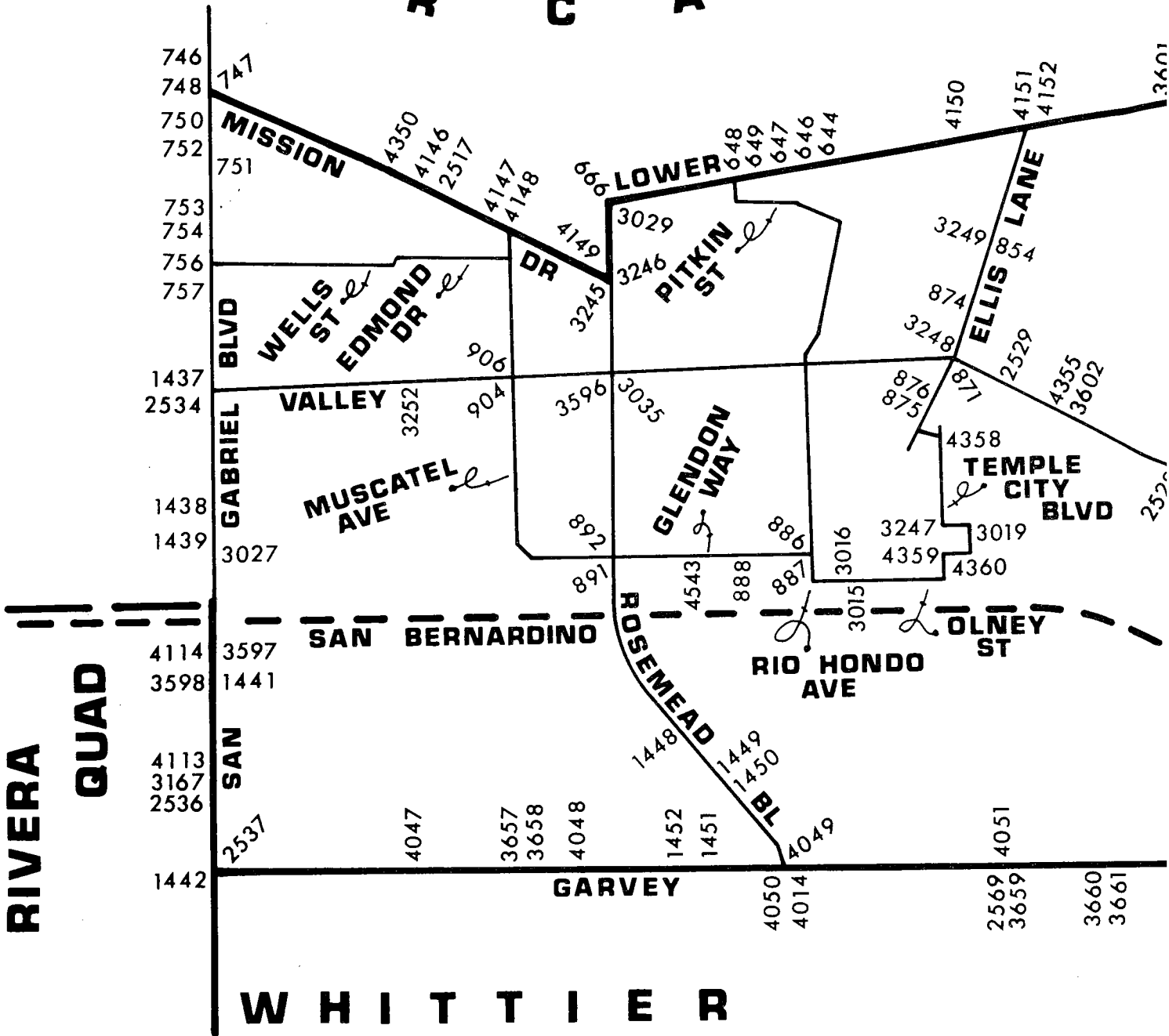
Q U A D



SCALE

LIGHT SOLID LINES WITHOUT NUMBERS INDICATE PREVIOUS LINES OF BENCH MARKS THAT ARE NOT INCLUDED IN THE 1980 ADJUSTMENT.

A R C A D I A



**ROSEMEAD**

**QUAD**

6-27-80



07/10/80

LOS ANGELES COUNTY ROAD DEPARTMENT  
SURVEY SECTION

PAGE 1

QUAD-YEAR	ELEV	DESCRIPTION (INCLUDE QUAD AND YEAR IN DESCRIPTION)	BM NUMBER
BASELINE (1975)	308.678	L&T @ SW COR DRIVEWAY 48FT E C/L PECK RD & 100FT S C/L BASYE ST	CG 144
ARCADIA (1980)	309.721	BT SPK E CB EL MONTE AVE 18FT N CONC DR TO HSE NO 4850 28FT E C/L 500FT N LOWER AZUSA RD MKD (TE 466)	CG 290
ARCADIA (1980)	323.177	BT SPK E CB EL MONTE AVE 475FT S FREER ST MKD (TE 462)	CG 292
ARCADIA (1980)	326.823	BT SPK W CB 10FT S BCR @ SW COR FREER ST & EL MONTE AVE MKD (TE 461)	CG 293
ARCADIA (1980)	332.615	BT SPK E CB EL MONTE AVE 28FT E C/L & 28FT S C/L PROD OLIVE ST MKD (TE 459)	CG 294
ARCADIA (1980)	341.077	BT SPK W CB EL MONTE AVE 7FT S C/L PROD DANBURY ST MKD (TE 553)	CG 296
ARCADIA (1980)	350.876	BT SPK S CB 8FT E BCR @ SE COR LIVE OAK AVE & EL MONTE AVE MKD (TE 517)	CG 298
BASELINE (1975)	283.479	RD HD NAIL IN 1IN STEEL WASHER @ E BCR & W END OF CATCH BASIN @ NE COR PECK RD & VALLEY BLVD 39FT N & 66FT E/O C/L INT	CG 469
BASELINE (1975)	273.420	L&T 8FT E/O CONC DRWY TO GAS STA @ NW COR GARVEY AVE & PECK RD 40FT N & 57FT W/O C/L INT	CG 474
BASELINE (1975)	273.358	L&BN 1FT W BCR @ SW COR GARVEY AVE & PECK RD 38FT S & 77FT W/O C/L INT	CG 475
ARCADIA (1980)	356.219	L&PK W CB 6FT N BCR @ NW COR LONGLEY WAY & LIVE OAK AVE MKD (TE 513)	CG 534
ARCADIA (1980)	359.967	L&PK E CB 5FT N BCR @ NE COR WARREN WAY & LIVE OAK AVE MKD (TE 512)	CG 535
ARCADIA (1980)	362.411	L&PK W CB 6FT N BCR @ NW COR CAROLINE WAY & LIVE OAK AVE MKD (TE 510)	CG 536
ARCADIA (1980)	363.706	L&SPK E CB 9FT N BCR @ NE COR HOLLY AVE & LIVE OAK AVE MKD (TE 508)	CG 537
ARCADIA (1980)	366.582	PK W CB 5FT N BCR @ NW COR WINTHROP AVE & LIVE OAK AVE MKD (TE 507)	CG 538
ARCADIA (1980)	369.745	PK W CB 5FT N BCR @ NW COR BRADFORD AVE & LIVE OAK AVE MKD (TE 506)	CG 539

QUAD-YEAR	ELEV	DESCRIPTION (INCLUDE QUAD AND YEAR IN DESCRIPTION)	BM NUMBER
ARCADIA (1980)	447.260	L&SPK S CB 4FT E/O BCR @ SE COR OAK AVE & LONGDEN AVE 18FT S & 29FT E/O C/L INT MKD (TE 118)	CG 561
ARCADIA (1980)	449.177	L & SPK W CB ENCINITA AVE 18FT W & 131FT S/O C/L INT LONGDEN AVE FRONT OF HSE NO 6261 MKD (TE119)	CG 563
ARCADIA (1980)	461.788	L&BN E CB 1FT N BCR @ NE COR ROSEMEAD BLVD & LONGDEN AVE	CG 569
ARCADIA (1980)	459.996	L&SPK E CB 5FT S BCR @ SE COR ROSEMEAD BLVD & LONGDEN AVE MKD (TE 142)	CG 570
ARCADIA (1980)	449.777	L&BN W CB ROSEMEAD BLVD 2FT N/O DR TO HSE NO 6165 800FT S LONGDEN AVE	CG 571
ARCADIA (1980)	438.386	L&BN N CB 3FT W BCR @ NW COR ROSEMEAD BLVD & GARIBALDI AVE 20FT N & 66FT W/O C/L INT	CG 572
ARCADIA (1980)	436.925	BT SPK IN E CB 6FT S BCR @ SE COR ROSEMEAD BLVD & GARIBALDI AVE MKD (TE 139)	CG 573
ARCADIA (1980)	427.719	L&BN IN W CB ROSEMEAD BLVD 1FT N OF CONC DR TO HSE NO 5947 MIDWAY BET GARIBALDI AV & HERMOSA DR	CG 574
ARCADIA (1980)	412.627	L&SPK E CB 6FT S BCR @ SE COR ROSEMEAD BLVD & ELM AVE MKD (TE 136)	CG 576
ARCADIA (1980)	408.877	L&SPK E CB 29FT N BCR @ NE COR ROSEMEAD BLVD & LAS TUNAS DR 40FT E & 127FT N/O C/L INT MKD (TE 135)	CG 577
ARCADIA (1980)	405.335	BT SPK E CB ROSEMEAD BLVD 22FT S/O C/L 1ST ALLEY S/O LAS TUNAS DR 122FT S/O BCR @ LAS TUNAS DR MKD (TE 785)	CG 579
ARCADIA (1980)	386.632	L&SPK IN E CB RIO HONDO AVE 12FT N/O BCR 18FT E & 50FT N/O C/L INT LIVE OAK AVE	CG 590
ARCADIA (1980)	387.106	L&SPK W CB 62FT N & 18FT W/O C/L INT ALESSANDRO AVE & LIVE OAK AVE MKD (TE 25) 28FT N/O BCR	CG 591
ARCADIA (1980)	386.126	L&SPK W CB OAK AVE 15FT N/O BCR 18FT W & 43FT N C/L INT LIVE OAK AVE MKD (TE-26)	CG 592
ARCADIA (1980)	384.374	L&SPK W CB CLOVERLY AVE 10FT N/O BCR 43FT N & 18 FT W/O C/L INT LIVE OAK AVE MKD (T27)	CG 593
ARCADIA (1980)	381.049	L&BN E CB CAMELLIA AVE 38FT N/O BCR 18FT E & 80 FT N/O C/L INT LIVE OAK AVE	CG 598

QUAD-YEAR	ELEV	DESCRIPTION (INCLUDE QUAD AND YEAR IN DESCRIPTION)	BM NUMBER
ARCADIA (1980)	380.067	L&SPK W CB KAUFFMAN AVE 22FT N/O BCR 18FT W & 64 FT N/O C/L INT LIVE OAK AVE MKD (TE 32)	CG 599
BASELINE (1975)	310.212	L&SPK E CB 7FT N/O BCR @ NE COR LOWER AZUSA RD & BIRCHLAND PL 60FT N & 15FT E C/L INT MKD (TE 477)	CG 625
BASELINE (1975)	330.770	USC & GS BR CAP MON IN W CONC CHANNEL WALL @ SW COR OF LOWER AZUSA RD BRIDGE NO B 1053 OVER EATON CYN WASH 34FT S C/L LOWER AZUSA RD & 200FT W C/L RIO HONDO AVE MKD (S 1142 1961)	CG 644
BASELINE (1975)	327.815	L&BN (NO HEAD) S CB 38FT S C/L LOWER AZUSA RD & 37FT W INT SPRR & 437FT E INT ENCINITA AVE	CG 646
BASELINE (1975)	324.142	L&SPK N CB 8FT E/O BCR @ NE COR LOWER AZUSA RD & ENCINITA AVE 50FT E & 28FT N C/L INT MKD (WM 254)	CG 647
BASELINE (1975)	323.771	L&T N CB 1FT W BCR @ NW COR LOWER AZUSA RD & ENCINITA AVE 35FT W & 28FT N C/L INT	CG 648
BASELINE (1975)	322.167	LACS BR CAP MON IN WELL @ C/L INT LOWER AZUSA RD & ENCINITA AVE MKD (RE 329)	CG 649
BASELINE (1975)	336.486	L&T W CB 40FT W C/L ROSEMEAD BLVD & 50FT S C/L PROD LOWER AZUSA RD	CG 666
ARCADIA (1980)	348.252	L&SPK W CB 6FT S BCR @ SW COR ROSEMEAD BLVD W SERVICE RD & GRAND AVE 25FT S & 12FT W/O C/L SERVICE RD INT MKD (WM 3)	CG 668
ARCADIA (1980)	353.052	L&BN 1FT UP IN S WALL @ W END SPRR BRIDGE OVER ROSEMEAD BLVD 70FT N C/L GRAND AVE	CG 669
ARCADIA (1980)	362.454	L & T W CB OF W SERVICE RD 80FT W C/L ROSEMEAD BLVD ON C/L PROD PENTLAND ST	CG 670
ARCADIA (1980)	373.660	L&SPK E CB 10FT N BCR @ NE COR SERENO DR & ROSEMEAD BLVD 40FT E & 48FT N/O C/L INT MKD (TE 776)	CG 671
ARCADIA (1980)	382.786	FC DISC IN CONC WK NE COR BRIDGE NO 53-329 OVER EATON WASH 4FT S BCR @ SE COR ROSEMEAD BLVD & CLIVE ST	CG 672
ARCADIA (1980)	395.182	L&T W CB 5FT N/O END 40FT N & 20FT W/O C/L INT BROADWAY & MUSCATEL AVE TO THE N	CG 675
ARCADIA (1980)	395.444	L&T W CB 18FT W & 77FT S/O C/L INT BROADWAY & MUSCATEL AVE TO THE S 35FT S/O BCR	CG 676

QUAD-YEAR	ELEV	DESCRIPTION (INCLUDE QUAD AND YEAR IN DESCRIPTION)	BM NUMBER
ARCADIA (1980)	399.542	L&T S CB 1FT E BCR @ SE COR BROADWAY & N LA PRESA AVE 59FT E & 20FT S/O C/L INT	CG 677
ARCADIA (1980)	399.583	L&T S EDGE CONC WK 5FT FROM END 30FT S C/L BROADWAY 35FT W C/L WALNUT GROVE AVE	CG 679
ARCADIA (1980)	398.515	L&T N EDGE CONC DR @ SW COR BROADWAY & WALNUT GROVE AVE 133FT S & 33FT W/O C/L INT	CG 680
ARCADIA (1980)	398.400	L&T W CB 3FT N BCR @ NW COR CHARLOTTE AVE & BROADWAY 33FT N & 20FT W/O C/L INT	CG 704
ARCADIA (1980)	398.351	L&T E CB 3FT N/O BCR @ NE COR BROADWAY & CHARLOTTE AVE 33FT N & 20FT E/O C/L INT	CG 705
ARCADIA (1980)	446.961	SPK S CB 10FT E/O BCR @ SE COR SAN GABRIEL BLVD & HERMOSA DR 57FT E & 20FT S/O C/L INT MKD (BM 224)	CG 711
ARCADIA (1980)	451.672	SPK E CB 5FT S/O BCR @ SE COR LESLIE DR & SAN GABRIEL BLVD 61FT S & 36FT E/O C/L INT	CG 712
ARCADIA (1980)	456.852	L&T S CB 2FT E BCR @ SE COR SAN GABRIEL BLVD & SANTA YNEZ ST 74FT E & 16FT S/O C/L INT	CG 713
ARCADIA (1980)	461.745	L&T S CB 3FT E BCR @ SE COR BEVAN ST & SAN GABRIEL BLVD 16FT S & 75FT E/O C/L INT	CG 714
ARCADIA (1980)	466.543	SPK E CB 6FT S BCR @ SE COR GARIBALDI AVE & SAN GABRIEL BLVD 51FT S & 38FT E/O C/L INT MKD (BM 228)	CG 715
ARCADIA (1980)	472.932	SPK E CB 9FT N/O BCR @ NE COR BEVERLY DR & SAN GABRIEL BLVD 37FT N & 38FT E/O C/L INT MKD (TE 621)	CG 716
ARCADIA (1980)	483.221	RD BR CAP MON IN WELL @ C/L INT SAN GABRIEL BLVD & LONGDEN AVE	CG 718
ARCADIA (1980)	483.152	L&T S CB 19FT E CB RET @ SE COR LONGDEN AVE & SAN GABRIEL BLVD 20FT S & 72FT E/O C/L INT	CG 719
BASELINE (1975)	366.248	L&T CTR OF CB RET @ NW COR SAN GABRIEL BLVD & MISSION DR 43FT W & 53FT N C/L INT	CG 746
BASELINE (1975)	365.422	LACS BR CAP MON IN WELL C/L INT SAN GABRIEL BLVD & MISSION DR MKD (EL MONTE B-2 1940 RE2177)	CG 747
BASELINE (1975)	365.641	L&T W CB 7FT S BCR @ SW COR SAN GABRIEL BLVD & MISSION DR 30FT S & 38FT W C/L INT	CG 748

QUAD-YEAR	ELEV	DESCRIPTION (INCLUDE QUAD AND YEAR IN DESCRIPTION)	BM NUMBER
ROSEMEAD (1980)	362.011	L&T W CB 3FT S/O BCR SW COR FAIRVIEW AVE & SAN GABRIEL BLVD 37FT S & 38FT W/O C/L INT	CG 750
ROSEMEAD (1980)	355.813	CS BR CP MON IN WELL C/L INT CENTRAL AVE & SAN GABRIEL BLVD MKD ( RE329)	CG 751
ROSEMEAD (1980)	356.462	L&T 4FT N/O BCR NW COR CENTRAL AVE & SAN GABRIEL BLVD 39FT N & 38FT W/O C/L INT	CG 752
ROSEMEAD (1980)	349.566	L&T W CB 2FT N BCR @ NW COR SAN GABRIEL BLVD & CHESTNUT AVE 38FT N & 35FT W/O C/L INT	CG 753
ROSEMEAD (1980)	348.689	L&T W CB 4FT S BCR @ SW COR SAN GABRIEL BLVD & CHESTNUT AVE 39FT S & 35FT W/O C/L INT	CG 754
ROSEMEAD (1980)	342.366	CO FC BRASS CP MON IN WELL C/L WELLS ST 14FT W/O INT SAN GABRIEL BLVD MKD ( FLOOD CONTROL DISTRICT 1968)	CG 756
ROSEMEAD (1980)	342.364	CS BRASS CP MON IN WELL C/L INT WELLS ST & SAN GABRIEL BLVD MKD (RE 329)	CG 757
ARCADIA (1980)	490.174	L&SPK W CB 6FT N BCR @ NW COR LOS OLIVOS DR TO W & SAN GABRIEL BLVD 39FT N & 38FT W/O C/L INT MKD (TE)615)	CG 775
ARCADIA (1980)	496.377	SPK W CB 10FT N BCR @ NW COR SOMERSET PL & SAN GABRIEL BLVD 44FT N & 37FT W/O C/L INT MKD (616)	CG 776
ARCADIA (1980)	504.168	L&SPK W CB 6FT S BCR @ SW COR SHEFFIELD RD & SAN GABRIEL BLVD 43FT S & 37FT W/O C/L INT MKD (TE 617)	CG 777
ARCADIA (1980)	504.583	RD BR CAP MON IN WELL C/L INT SAN GABRIEL BLVD & SHEFFIELD RD	CG 778
ARCADIA (1980)	506.164	L&SPK E CB 8FT N/O BCR @ NE COR SHEFFIELD RD & SAN GABRIEL BLVD 44FT N & 38FT E/O C/L INT MKD (TE)618)	CG 779
ARCADIA (1980)	513.646	L&SPK W CB 10FT N/O BCR @ NW COR WOODLAWN AVE & SAN GABRIEL BLVD 59FT N & 37FT W/O C/L INT MKD (TE 619)	CG 780
ARCADIA (1980)	528.450	RD BR CAP MON IN WELL C/L INT DUARTE RD & SAN GABRIEL BLVD	CG 781
ARCADIA (1980)	495.964	L&SPK E CB 12FT S BCR @ SE COR JACK AVE & NAOMI AVE MKD (TE 352)	CG 808

QUAD-YEAR	ELEV	DESCRIPTION (INCLUDE QUAD AND YEAR IN DESCRIPTION)	BM NUMBER
ARCADIA (1980)	489.415	L&SPK E CB OAK AVE 12FT N C/L ARDENDALE AVE FRONT OF HSE NO 6734 MKD (TE 353)	CG 809
ARCADIA (1980)	482.739	L&SPK E CB OAK AVE 5FT S C/L PROD CAMINO REAL TO W MKD (TE 355)	CG 811
ARCADIA (1980)	471.719	SPK E CB OAK AVE 3FT N C/L PROD EMPEROR AVE TO W MKD (TE 357)	CG 813
ARCADIA (1980)	466.366	L&SPK E CB 2FT S BCR @ SE COR OAK AVE & LEMON AVE MKD (TE 199)	CG 814
ARCADIA (1980)	453.509	L&SPK W CB OAK AVE 35FT S C/L PROD OLEMA ST FRONT OF HSE NO 6333 MKD (TE 204)	CG 815
ROSEMEAD (1980)	296.552	L&BN E CB 1FT N BCR @ NE COR OF ARDEN DR & ARDEN WAY	CG 831
ROSEMEAD (1980)	295.060	RE TAG NO 2000 E CB @ ANG PT @ S P/L OF HSE NO 4544 111FT S/O C/L INT ARDEN DR & ARDEN WAY & 30FT E/O C/L ARDEN DR	CG 832
ROSEMEAD (1980)	284.540	L&T N END OF CONC WK TO HSE NO 4226 30FT S C/L VENITA ST & 87FT E C/L ARDEN DR	CG 836
ROSEMEAD (1980)	300.058	RDBM TAG IN S CONC ABUT OF TEMPLE CITY BLVD BRIDGE NO B1051 OVER EATON CN WASH 31FT E C/L TEMPLE CITY BLVD & 66FT N SPRR	CG 854
ROSEMEAD (1980)	281.178	L&T NR CTR OF CB RET @ SE COR VALLEY BLVD & TEMPLE CITY BLVD 42FT S & 45FT E C/L INT	CG 871
ROSEMEAD (1980)	285.097	L&BN S CB 9FT E/O BCR 15FT S & 69FT E/O C/L INT TEMPLE CITY BLVD & ABILENE ST	CG 874
ROSEMEAD (1980)	278.795	L&SPK E CB ELLIS LANE 20FT E C/L & 0.7FT N C/L PROD STEELE ST MKD (WM 376)	CG 875
ROSEMEAD (1980)	274.520	L&SPK W CB 4FT S BCR @ SW COR ELLIS LANE & GUESS ST MKD (R 40)	CG 876
ROSEMEAD (1980)	268.930	L&T CTR CB RET @ NW COR RIO HONDO AVE & GLENDON WAY 26FT N & 28FT W/O C/L INT	CG 886
ROSEMEAD (1980)	267.554	L&T CTR CB RET @ SW COR RIO HONDO AVE & GLENDON WAY 28FT S & 28FT W/O C/L INT	CG 887
ROSEMEAD (1980)	268.931	L&T W CB OF MAC DR TO HSE NO 9318 GLENDON WAY 30FT S C/L & 333FT E LINDALEE AVE	CG 888
ROSEMEAD (1980)	279.885	L&BN N CB 1FT E BCR @ NE COR ROSEMEAD BLVD & GLENDON WAY 34FT N & 67FT E/O C/L INT	CG 891

QUAD-YEAR	ELEV	DESCRIPTION (INCLUDE QUAD AND YEAR IN DESCRIPTION)	BM NUMBER
ROSEMEAD (1980)	281.286	L&BN N CB 10FT W BCR @ NW COR ROSEMEAD BLVD & GLENDON WAY 34FT N & 77FT W/O C/L INT	CG 892
ROSEMEAD (1980)	319.559	CS MON IN WELL C/L MUSCATEL AVE 100FT S C/L VALLEY BLVD	CG 904
ROSEMEAD (1980)	322.706	CS MON IN WELL ON C/L MUSCATEL AVE 100FT N/O C/L VALLEY BLVD (USE S EDGE)	CG 906
ARCADIA (1980)	601.585	CS MON IN WELL 1FT W & 1FT N/O BCR @ NW COR MICHILLINDA AVE & SYCAMORE ST 20FT W & 48FT N/O C/L INT	CG 1218
BASELINE (1975)	714.305	L&BN 29FT N/O BCR @ NE COR SIERRA MADRE VILLA AVE & FOOTHILL BLVD 98FT N & 28FT E C/L INT	CG 1247
BASELINE (1975)	720.743	RAMSET 1FT W BCR @ NW COR SANTA PAULA AVE & FOOTHILL BLVD 51FT W & 30FT N C/L INT	CG 1249
BASELINE (1975)	739.232	L&BT SPK 2FT E BCR @ SE COR DAISY AVE & FOOTHILL BLVD 42FT E & 32FT S C/L INT	CG 1251
BASELINE (1975)	738.135	LACS BM MON IN WELL 51FT S & 15FT E OF C/L INT FOOTHILL BLVD & DAISY AVE MKD (BM 10-8 1952 RE 63)	CG 1252
BASELINE (1975)	687.629	L&BN S CB FOOTHILL BLVD 0.1MI W INT ROSEMEAD BLVD 34FT S C/L IN CTR C B FRONT OF BLDG NO 3600	CG 1254
ARCADIA (1980)	613.513	L&BN IN W CB MICHILLINDA AVE 1FT N CB RET @ NW COR BLANCHE AVE 20FT W & 34FT N C/L INT	CG 1269
ROSEMEAD (1980)	325.369	CS BRASS CP MON 23IN DN IN WELL 2FT S & 2FT W/O C/L INT SAN GABRIEL BLVD & VALLEY BLVD MKD ( EL MONTE B3 RE 2177 1940)	CG 1437
ROSEMEAD (1980)	311.027	SPK IN W CB 17FT S/O BCR SW COR NORWOOD PL & SAN GABRIEL BLVD 63FT S & 38FT W/O C/L INT	CG 1438
ROSEMEAD (1980)	307.410	SPK IN W CB 8FT S/O BCR SW COR MARSHALL ST & SAN GABRIEL BLVD 55FT S & 42 FT W/O C/L INT	CG 1439
BASELINE (1975)	293.686	L&T IN E CB SAN GABRIEL BLVD 38FT E C/L & 85FT S C/L HELLMAN AVE	CG 1441
BASELINE (1975)	271.556	CS BR CAP MON IN WELL 23FT S/O C/L GARVEY AVE & 14FT W/O C/L SAN GABRIEL BLVD MKD ( EL MONTE B-5 1940 RE 2177)	CG 1442
ROSEMEAD (1980)	251.039	L&BN W CB SERVICE ROAD ROSEMEAD BLVD 15FT S/O BCR 110FT S & 18FT W/O C/L INT TELSTAR AVE	CG 1448

QUAD-YEAR	ELEV	DESCRIPTION (INCLUDE QUAD AND YEAR IN DESCRIPTION)	BM NUMBER
ROSEMEAD (1980)	245.714	L&BN E CB ROSEMEAD BLVD 1FT N/O BCR & 45FT N/O C/L WHITMORE AVE & 64FT E/O C/L ROSEMEAD BLVD	CG 1449
ROSEMEAD (1980)	246.489	L&BN E CB ROSEMEAD BLVD 5FT S/O BCR 1FT N/O C B 80FT S/O C/L WHITMORE AVE & 52FT E/O C/L ROSEMEAD BLVD	CG 1450
BASELINE (1975)	246.945	FC BR CAP @ NE COR OF CONC BRIDGE NO 53-95 @ GARVEY AVE & RIO HONDO RIVER MKD (BM 57-13)	CG 1451
BASELINE (1975)	249.090	FC BR CAP @ NW COR OF CONC BRIDGE NO 53-95 @ GARVEY AVE & RIO HONDO RIVER MKD (MB 57-11)	CG 1452
ARCADIA (1980)	550.350	CS MON IN WELL 11IN DN 1FT BACK OF CB @ BCR @ NW COR HUNTINGTON DR & MICHILLINDA AVE 48FT W/O MICHILLINDA AVE & 76FT N/O C/L HUNTINGTON DR MKD (BM 20-7)	CG 1696
ARCADIA (1980)	563.439	SQ HD SPK W CB 45FT N BCR 85FT N C/L HUNTINGTON DR N & 45FT W C/L ROSEMEAD BLVD MKD (SD 809)	CG 1698
ARCADIA (1980)	568.958	L&SPK W CB 4FT N BCR 64FT N/O C/L HUNTINGTON DR N BARREL 20FT W/O C/L MADRE ST	CG 1700
ARCADIA (1980)	587.531	BT SPK W CB 1FT S CATCH BASIN 20FT W C/L LA PRESA DR 80FT N/O C/L HUNTINGTON DR N BARREL MKD (TE 637)	CG 1702
BASELINE (1975)	282.734	CS MON IN WELL 8IN DN @ NE COR PECK RD & VALLEY BLVD 40FT N & 64FT E C/L INT MKD (BM 15-1)	CG 2324
BASELINE (1975)	297.357	RDBM TAG SE COR CONC TEL M H @ SE COR PECK RD & FOREST GROVE ST 22FT S & 68FT E C/L INT	CG 2326
BASELINE (1975)	336.941	L&T @ NE COR CONC WK OF BLDG NO 5343 @ SW COR PECK RD & RIO HONDO PKWY 147FT S & 78FT W/O C/L INT MKD (BM)	CG 2329
BASELINE (1975)	338.560	FC MON IN N END OF CB ON BRIDGE NO B 1270 40FT W C/L PECK RD & 1000FT N CLARK ST MKD (BM 67-75)	CG 2332
BASELINE (1975)	339.265	RDBM TAG CONC WALL OF WASH @ NE COR BRIDGE NO B1270 5FT E CB & 45FT E C/L PECK RD & 1000FT N CLARK ST	CG 2333
BASELINE (1975)	357.452	RD MON IN WELL 6IN DN @ INT MYRTLE AVE & LONGDEN AVE	CG 2336
BASELINE (1975)	364.237	L&T E CB MYRTLE AVE 40FT E C/L & 37FT S BCR OF ISL & 66FT S C/L CALIFORNIA AVE EXIT	CG 2337



QUAD-YEAR	ELEV	DESCRIPTION (INCLUDE QUAD AND YEAR IN DESCRIPTION)	BM NUMBER
BASELINE (1975)	365.158	LAFC TAG W CB MYRTLE AVE 40FT W C/L & 5FT S/O C B & 46FT N CALIFORNIA AVE EXIT S TAG OF 2 TAGS	CG 2338
BASELINE (1975)	666.808	SMALL SPK & W N CB 1FT E/O BCR @ NE COR DEXTER AVE & FOOTHILL BLVD 49FT E & 27FT N C/L INT	CG 2494
BASELINE (1975)	670.152	L&BN E CB 1FT S/O BCR @ NE COR FOOTHILL BLVD N SERV RD & DEXTER AVE 25FT N & 21FT E C/L INT	CG 2495
BASELINE (1975)	591.350	LACS BR CAP MON IN WELL 1FT N C/L FOOTHILL BLVD & 70FT E C/L BURNELL OAKS LN MKD ( SIERRA MADRE G 6 1940 RE2177)	CG 2502
BASELINE (1975)	308.548	LAFC MON IN E ABUT @ NE COR BRIDGE NO B1256 32FT RD BRIDGE NO B1256 OVER RIO HONDO RIVER 32FT N C/L LOWER AZUSA RD & 462FT E INT DALEVIEW AVE MKD (BM 62-128 1959)	CG 2506
BASELINE (1975)	306.908	RDBM TAG IN N CB 3FT W NW COR BRIDGE NO B1256 (OVER RIO HONDO RIVER) 26FT N/O C/L LOWER AZUSA RD & 233FT E/O INT DALEVIEW AVE	CG 2507
ARCADIA (1980)	431.810	LACS BR CAP MON IN WELL C/L INT LAS TUNAS DR & SAN GABRIEL BLVD MKD (RE 63) USE E EDGE	CG 2510
BASELINE (1975)	353.258	L&BN NR N EDGE OF CONC DRWY TO HSE NO 4471 BARTLETT AVE TO S @ SW COR OF MISSION DR 25FT W & 50FT S C/L INT	CG 2517
ROSEMEAD (1980)	282.578	RAM SET IN STEEL WASHER IN CTR C B @ NE COR VALLEY BLVD & JOHNSON AVE 41FT N & 40FT E/O C/L INT	CG 2521
ROSEMEAD (1980)	282.671	L&BR N CB 1FT W BCR @ NW COR VALLEY BLVD & JOHNSON AVE 40FT N & 40FT W/O C/L INT	CG 2522
ROSEMEAD (1980)	286.255	SURVEY MON IN WELL 14IN DN ON C/L VALLEY BLVD 40FT E/O C/L TYLER AVE MKD ( DIV OF HWY)	CG 2523
ROSEMEAD (1980)	286.989	L&TRANSIT TK N CB 6FT W/O BCR @ NW COR VALLEY BLVD & TYLER AVE 32FT N & 65FT W/O C/L INT	CG 2524
ROSEMEAD (1980)	275.829	L&T IN N CB VALLEY BLVD 1FT E CB RET @ NW COR VELMA ST 38FT N & 60FT W C/L INT	CG 2528
ROSEMEAD (1980)	276.191	L&T IN N CB VALLEY BLVD 1FT E CB RET @ NW COR OF ROWLAND AVE 38FT N & 60FT W C/L INT	CG 2529

QUAD-YEAR	ELEV	DESCRIPTION (INCLUDE QUAD AND YEAR IN DESCRIPTION)	BM NUMBER
ROSEMEAD (1980)	281.100	CS MON IN WELL @ C/L INT ARDEN DR & ROSE ST	CG 2530
ROSEMEAD (1980)	326.565	L&BN W CB 1FT S BCR @ SW COR VALLEY BLVD & SAN GABRIEL BLVD 63FT S & 38FT W/O C/L INT	CG 2534
BASELINE (1975)	276.439	RD HD SPK W CB 10FT S BCR @ SW COR SAN GABRIEL BLVD & WHITMORE ST 40FT S & 38FT W C/L INT MKD (WM 28)	CG 2536
BASELINE (1975)	275.916	FC BR CAP IN W WINGWALL 73FT N C/L GARVEY AVE & 225FT W C/L SAN GABRIEL BLVD MKD (BM 55-24)	CG 2537
BASELINE (1975)	250.068	CS ANG PT MON IN WELL 8IN DN 21FT S/O C/L GARVEY AVE ON C/L PTRERO AVE MKD (EL MONTE F-5 1940)	CG 2569
BASELINE (1975)	262.707	CS MON IN WELL 8IN DN ON SELY COR GARVEY AVE & CENTRAL AVE 40FT S & 180FT E C/L INT 2FT S OF CB FACE MKD (BM 12-7)	CG 2570
BASELINE (1975)	266.680	CS MON IN WELL 11IN DN ON SW COR TYLER AVE & GARVEY AVE 40FT S & 45FT W C/L INT MKD (BM 12-6)	CG 2571
BASELINE (1975)	296.421	CS MON IN WELL 12IN DN 1FT E CB @ SE COR FORREST GROVE ST & PECK RD 71FT S & 41FT E C/L INT MKD (BM 15-2A 1963)	CG 2635
BASELINE (1975)	313.535	CS BR CAP FLUSH IN CONC LIGHT BASE FOR GAS STA @ SW COR PECK RD & LAMBERT AVE 40FT S & 47FT W C/L INT MKD (15-3-A 1963)	CG 2636
BASELINE (1975)	353.870	FC BR CAP IN S END W WINGWALL OF BRIDGE NO 964 @ SE COR PECK RD & LIVE OAK ST 48FT S & 82FT E APPROX C/L INT MKD (67-76 1959)	CG 2637
BASELINE (1975)	386.872	L&SPK IN W CB 6FT S BCR 55FT S & 45FT W C/L INT E ALTERN ST & S MYRTLE AVE MKD (LE 85)	CG 2638
BASELINE (1975)	387.470	L&SPK S CB E ALTERN ST 10FT E BCR 20FT S & 79FT E C/L INT S MYRTLE AVE & E ALTERN ST MKD (LE 20)	CG 2639
BASELINE (1975)	432.120	L&T E CB 15FT N BCR 75FT S & 43FT E C/L INT DUARTE RD & S MYRTLE AVE	CG 2640
BASELINE (1975)	499.580	CE MON FLUSH IN W/LK BACK OF CB 30FT E BCR @ SE COR HUNTINGTON DR & MYRTLE AVE 126FT E & 36FT S C/L INT MKD (11-10A RE 5869 CE)	CG 2642
BASELINE (1975)	296.122	L&T N CB 44FT E BCR @ NE COR PECK RD & RAMONA BLVD 160FT E & 40FT N C/L INT	CG 2739

JAD-YEAR	ELEV	DESCRIPTION (INCLUDE QUAD AND YEAR IN DESCRIPTION)	BM NUMBER
ROSEMEAD (1980)	256.998	L&T S CB OLNEY ST 18FT S C/L @ C/L PROD VANE AVE	CG 3015
ROSEMEAD (1980)	257.350	L&T N CB 8FT W BCR @ NE COR OLNEY ST & VANE AVE 20FT N & 32FT E C/L INT	CG 3016
ROSEMEAD (1980)	263.318	L&T CONC DR SW COR BROOKLINE AVE & MARSHALL ST 88FT W & 28FT S C/L INT MKD (BM)	CG 3019
BASELINE (1975)	264.640	L&BN S CB 1FT E/O BCR @ SE COR SANTA ANITA AVE & GARVEY AVE 50FT E & 38FT S/O C/L INT	CG 3023
ROSEMEAD (1980)	307.365	STATE HWY BR DISC FL IN CTR DIVIDER STRIP C/L SAN GABRIEL BLVD 288FT S C/L MARSHALL ST TO THE EAST	CG 3027
BASELINE (1975)	336.193	L&T E CB 10FT S/O BCR @ SE COR ROSEMEAD BLVD & LOWER AZUSA RD 50FT S & 40FT E C/L INT	CG 3029
ROSEMEAD (1980)	315.699	BT SPK E CB 10FT S BCR @ SE COR VALLEY BLVD & ROSEMEAD BLVD 72FT S & 40FT E C/L INT	CG 3035
ARCADIA (1980)	384.002	L&T IN E CB 10FT S/O BCR @ SE COR EL MONTE ST TO THE E & SAN GABRIEL BLVD 45FT S & 38FT E/O C/L INT	CG 3040
ARCADIA (1980)	405.566	L&BN E CB 11FT S BCR @ SE COR SAN GABRIEL BLVD & BROADWAY 41FT S & 35FT E C/L INT	CG 3042
ARCADIA (1980)	406.395	L&BR W CB 12FT N/O BCR CTR CB @ NW COR BROADWAY & SAN GABRIEL BLVD 42FT N & 35FT W/O C/L INT	CG 3043
ARCADIA (1980)	412.546	LAFC BR DISC @ NW BRIDGE ABUT OVER RUBIO WASH 50FT W & 61FT S/O C/L INT SAN GABRIEL BLVD & WEDGEWOOD PL MKD (BM 58-523)	CG 3044
ARCADIA (1980)	431.749	LACS BR CAP MON IN WELL 8FT S & 1FT E C/L INT SAN GABRIEL BLVD & LAS TUNAS DR MKD (SIERRA MADRE B-12 1940 RE2177)	CG 3045
ARCADIA (1980)	447.541	RD BR CAP MON IN WELL C/L INT SAN GABRIEL BLVD & HERMOSA DR	CG 3046
ARCADIA (1980)	597.974	L&BN S CB 60FT W BCR @ SW COR SAN GABRIEL BLVD & HUNTINGTON DR 139FT W & 88FT S/O C/L INT	CG 3049
ARCADIA (1980)	597.597	L&BN N CB 25FT E BCR @ NE COR SAN GABRIEL BLVD & HUNTINGTON DR 110FT E & 75FT N/O C/L INT	CG 3050
ARCADIA (1980)	651.064	LACS BM MON IN WELL @ SW COR LOMBARDY RD & SAN GABRIEL BLVD 45FT S & 25FT W/O C/L INT MKD (BM 10-6 1952 RE 63)	CG 3051

QUAD-YEAR	ELEV	DESCRIPTION (INCLUDE QUAD AND YEAR IN DESCRIPTION)	BM NUMBER
ARCADIA (1980)	653.242	BT SPK E CB 5FT N/O BCR @ NE COR LOMBARDY RD & SAN GABRIEL BLVD 35FT N & 30FT E C/L INT	CG 3052
BASELINE (1975)	661.239	SPK E CB 6FT S/O BCR @ SE COR CALIFORNIA BLVD & SAN GABRIEL BLVD 58FT S & 27FT E C/L INT	CG 3053
BASELINE (1975)	721.306	SPK CTR CB RET @ NW COR COLORADO BLVD & SAN GABRIEL BLVD 41FT N & 34FT W C/L INT	CG 3056
BASELINE (1975)	727.818	L&BN 5FT E/O BCR @ SE COR DAISY AVE & WALNUT AVE 35FT E & 30FT S C/L INT	CG 3057
BASELINE (1975)	556.899	RAMSET 1FT S BCR @ SW COR FOOTHILL BLVD & RANCHO RD 61FT S & 18FT W C/L INT	CG 3060A
BASELINE (1975)	543.075	LACS BR CAP MON IN WELL C/L FOOTHILL BLVD 26FT E C/L SANTA ANITA AVE MKD (SIERRA MADRE I-6 1940 RE2177)	CG 3061
BASELINE (1975)	576.442	L&BR CTR CB RET @ SE COR FOOTHILL BLVD & MYRTLE AVE 41FT S & 33FT E/O C/L INT	CG 3068
BASELINE (1975)	554.843	L&BR CTR CB RET @ SE COR MYRTLE AVE & LIME AVE 32FT E & 24FT S C/L INT	CG 3069
BASELINE (1975)	517.927	L&T CTR CB RET @ NE COR MYRTLE AVE & CHESTNUT AVE 25FT N & 35FT E/O C/L INT	CG 3070
BASELINE (1975)	470.510	L&N 5FT N BCR @ NW COR MYRTLE AVE & MONTANA AVE 35FT N & 30FT W C/L INT	CG 3072
ARCADIA (1980)	373.788	L&BN 11FT S/O BCR @ SW COR LIVE OAK AVE & BALDWIN AVE 56FT S & 40FT W/O C/L INT	CG 3080
ARCADIA (1980)	583.027	SPK W CB MICHILLINDA AVE 5FT N C/L PROD HUGO REID DR MKD (TE 431)	CG 3091
ARCADIA (1980)	560.523	SPK 9FT N BCR @ NW COR MICHILLINDA AVE & CALIFORNIA BLVD MKD (TE 432)	CG 3092
BASELINE (1975)	714.005	LACS BM MON IN WELL 1FT E/O E CB @ NE COR 117FT N & 29FT E C/L INT FOOTHILL BLVD & SIERRA MADRE VILLA AVE MKD (BM 10-9A RE5869 1962)	CG 3094
BASELINE (1975)	279.725	CS BR CAP MON IN WELL @ C/L INT EMERSON PLACE & SAN GABRIEL BLVD MKD (RE 63)	CG 3167

QUAD-YEAR	ELEV	DESCRIPTION (INCLUDE QUAD AND YEAR IN DESCRIPTION)	BM NUMBER
ARCADIA (1980)	584.382	L & T N CB OF ISLAND NR C/L HUNTINGTON DRIVE 115FT E/O C/L LA PRESA DR	CG 3227
ARCADIA (1980)	567.289	L & BN 21FT E BCR 70FT N & 89FT E C/L INT HUNTINGTON DR & MADRE ST	CG 3228
ARCADIA (1980)	560.542	L & T 6FT N BCR 40FT E & 75FT S C/L INT HUNTINGTON DR & ROSEMEAD BLVD MKD (BM)	CG 3229
ARCADIA (1980)	552.393	L & T 35FT N BCR 200FT N & 25FT E C/L INT HUNTINGTON DR & MICHILLINDA AVE	CG 3230
ARCADIA (1980)	601.225	RD HD SPK 8FT S BCR 50FT S & 20FT W C/L INT SYCAMORE AVE & MICHILLINDA AVE MKD (TE 428)	CG 3231
ARCADIA (1980)	386.681	L&T 2FT W/O BCR 30FT S & 67FT W/O C/L INT ROSEMEAD BLVD & BROADWAY	CG 3238
ARCADIA (1980)	386.076	STATE HWY BR CAP MON IN WELL 12IN DN @ C/L INT ROSEMEAD BLVD & BROADWAY	CG 3239
ARCADIA (1980)	350.764	L & BN NR BCR 38FT N & 50FT E C/L INT LIVE OAK AVE & EL MONTE AVE (MKD BM)	CG 3240
BASELINE (1975)	316.609	L&BN 45FT E/O BCR 32FT N & 107FT E C/L INT LOWER AZUSA RD & SANTA ANITA AVE MKD (BM)	CG 3241
BASELINE (1975)	333.088	RDBM TAG 5FT W BCR 32FT N & 85FT W C/L INT ROSEMEAD BLVD & MISSION DR	CG 3245
BASELINE (1975)	332.417	L & T 3FT N/O BCR 47FT N & 40FT E C/L INT ROSEMEAD BLVD & MISSION DR	CG 3246
ROSEMEAD (1980)	262.134	RDBM TAG S CB 20FT S & 90FT W C/L INT MARSHALL ST & TEMPLE CITY BLVD	CG 3247
ROSEMEAD (1980)	280.460	L & T 40FT S BCR 135FT S & 30FT W C/L INT VALLEY BLVD & TEMPLE CITY BLVD	CG 3248
ROSEMEAD (1980)	300.382	RDBM TAG S ABUT BRIDGE NO B1051 33FT W C/L TEMPLE CITY BLVD & 100FT N SPRR TRACK	CG 3249
ROSEMEAD (1980)	278.085	RDBM TAG 0.7FT E BCR 38FT N & 58FT E C/L INT VALLEY BLVD & ARDEN DR	CG 3251
ROSEMEAD (1980)	321.088	RDBM TAG 1FT N BCR 71FT N & 32FT W C/L INT VALLEY BLVD & WALNUT GROVE AVE	CG 3252
ROSEMEAD (1980)	282.684	LACS MON IN WELL 8IN DN @ C/L INT ARDEN DR & RAILROAD DR (USE N EDGE)	CG 3253

