

COUNTY OF LOS ANGELES

ROAD DEPARTMENT

PRECISE

BENCH MARK LIST



CULVER QUAD

FAIRFAX QUAD

1980 ADJUSTMENT

P R E F A C E
1980 Adjustment

The Road Department level net published in 1975 consisted of more than 1500 miles of levels supporting in excess of 18,000 bench marks. For reasons of economy, this 1980 adjustment is reduced to about 55% of the bench marks previously published. Reductions were made by increasing the spacing between level lines in unincorporated territory, and eliminating lines in non-contract cities and areas where the probability of future engineering projects appears slight. The 1980 adjustment is an update of the remainder of the 1975 bench marks, not including baselines. Data from previous adjustments is available without inferring any responsibility for the current reliability of the data or the actual existence of the bench marks. Elevations of bench marks with the same quad name, but different adjustment dates, are not normally compatible.

To facilitate the adjustment, indexing, and distribution of adjusted values of the net, the County territory is divided into 34 quads or areas. For identification purposes each quad is given a name, viz., "Rosemead," "La Mirada," "Santa Fe," etc. When bench marks and elevations in the Road Department net are used, the name of the quad in which the bench mark is located and the date of the elevation adjustment must be included in the bench mark description, e.g.,

CY 6901 - RDEM TAG S CB 11FT E BCR @ SE COR LA CIENEGA
BLVD & LENNOX BLVD 32FT S & 73FT E C/L INT
(HAWTHORNE - 1980) ELEV. 82.549

The precision of the net is reflected by an indicated field probable error of plus or minus 0.012 foot per mile of leveling as determined from over 300 conditions of closure. However, many years experience in vertical control in the greater Los Angeles basin and Antelope Valley indicate that because of varying degrees of subsidence and heaving, the true datum is recovered only by obtaining substantial agreement between a number of bench marks.

The users of this net are invited to assist in its maintenance by notifying this Department of cases of obliteration, apparent mistakes in descriptions or elevations, and proven disturbance of bench marks.

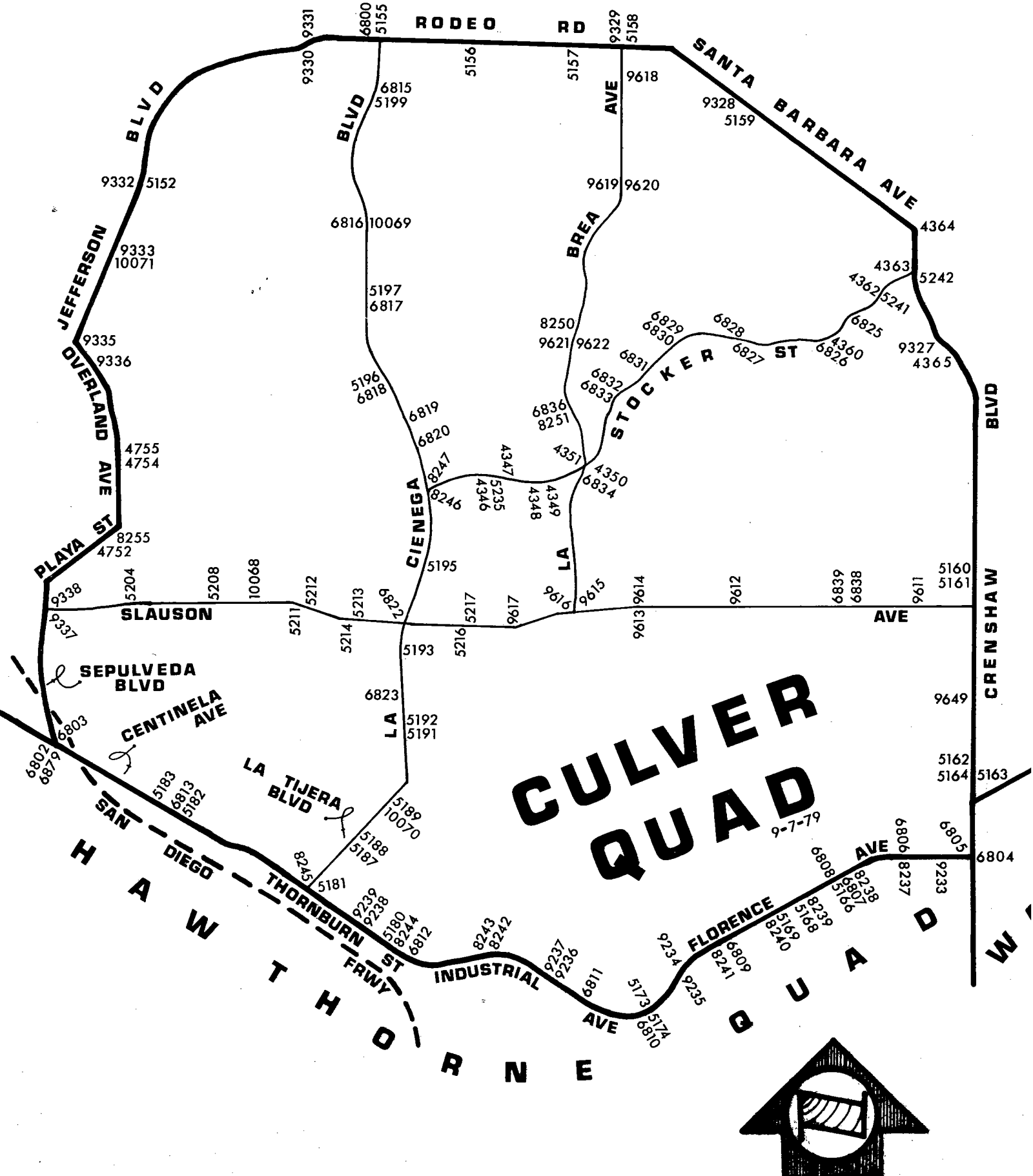
DATUM: U. S. Coast and Geodetic Survey Sea Level Datum
of 1929, through the medium of the Los Angeles
County Engineer Precise Level Net.

ABBREVIATIONS USED IN BENCH MARK LISTINGS

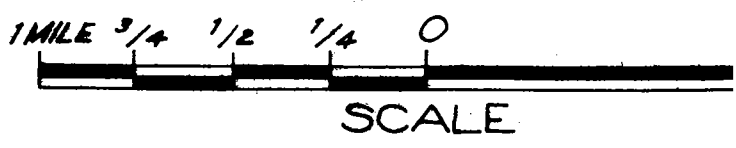
ABUT - - - - -	Abutment	EC - - - - -	End of Curve
ALG - - - - -	Along	ENT - - - - -	Entrance
ANG PT - - - - -	Angle Point	FL - - - - -	Floor
B/W - - - - -	Back of Walk	FTG - - - - -	Footing
BCR - - - - -	Beginning of Curb Return	FRWY - - - - -	Freeway
BC - - - - -	Beginning of Curve	F/W - - - - -	Front of Walk
BLDG - - - - -	Building	GAR - - - - -	Garage
EM - - - - -	Bench Mark	HDWL - - - - -	Headwall
BT SPK - - - - -	Boat or Bolt Spike	HSE - - - - -	House
BR CAP - - - - -	Brass or Bronze Cap	HWY - - - - -	Highway
C B - - - - -	Catch Basin	INT - - - - -	Intersection
CTR - - - - -	Center	IP - - - - -	Iron Pipe
C/L - - - - -	Center Line	LT - - - - -	Left
C/L INT - - - - -	Center Line Intersection	LACE - - - - -	L. A. City Engineer
C/L PROD - - - - -	Center Line Produced	LACS - - - - -	L. A. Co. Engineer
CONC - - - - -	Concrete	LAFC - - - - -	L. A. Co. Flood Control
COR - - - - -	Corner	L&BN - - - - -	Lead and Bench Nail
COE - - - - -	Corps of Engineers	L&BR - - - - -	Lead and Brad
CULV - - - - -	Culvert	L&N - - - - -	Lead and Nail
CYN - - - - -	Canyon	L&SPK - - - - -	Lead and Spike
CB - - - - -	Curb	L&T - - - - -	Lead and Tack
CS MON - - - - -	Co. Engineer Monument	MCR - - - - -	Middle of Curb Return
CT SPK - - - - -	Cut Spike	MKD - - - - -	Marked
DR - - - - -	Drive or Driveway	MC - - - - -	Middle of Curve
E/O - - - - -	East of	MON - - - - -	Monument
ECR - - - - -	End of Curb Return	N/O - - - - -	North of

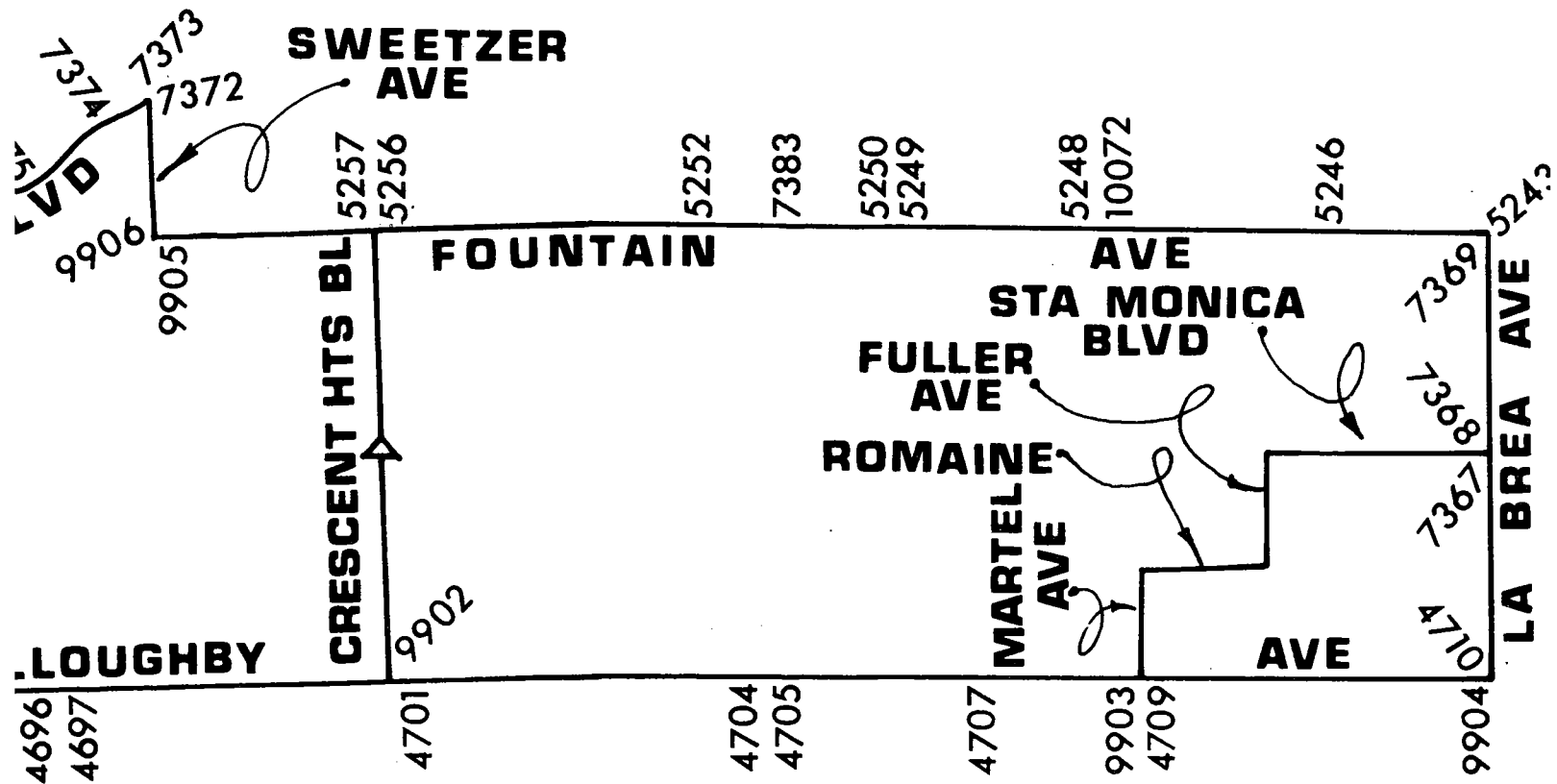
ABBREVIATIONS USED IN BENCH MARK LISTINGS . . . CONTINUED

NR - - - - - Near
OPP - - - - - Opposite
PI - - - - - Point of Intersection
PK&W - - - - - PK Nail and Washer
P/L - - - - - Property Line
POST - - - - - Point on Semi-Tangent
PP - - - - - Power Pole
PVMT - - - - - Pavement
PROD - - - - - Produced
RD - - - - - Road
RDEM - - - - - Road Dept. Bench Mark
RDEM TAG - - - - - Road Dept. Bench Mark Tag
RR - - - - - Railroad
RT - - - - - Right
R/W - - - - - Right of Way
SDMH - - - - - Storm Drain Manhole
SMH - - - - - Sewer Manhole
SPK - - - - - Spike
ST&W - - - - - Spike Tin and Washer
S/O - - - - - South of
TP - - - - - Telephone Pole
USC&GS - - - - - U. S. Coast and Geodetic Survey
USGS - - - - - U. S. Geological Survey
WK - - - - - Walk
W/O - - - - - West of



LIGHT SOLID LINES WITHOUT NUMBERS INDICATE PREVIOUS LINES OF BENCH MARKS THAT ARE NOT INCLUDED IN THE 1980 ADJUSTMENT.





FAIRFAX

QUAD

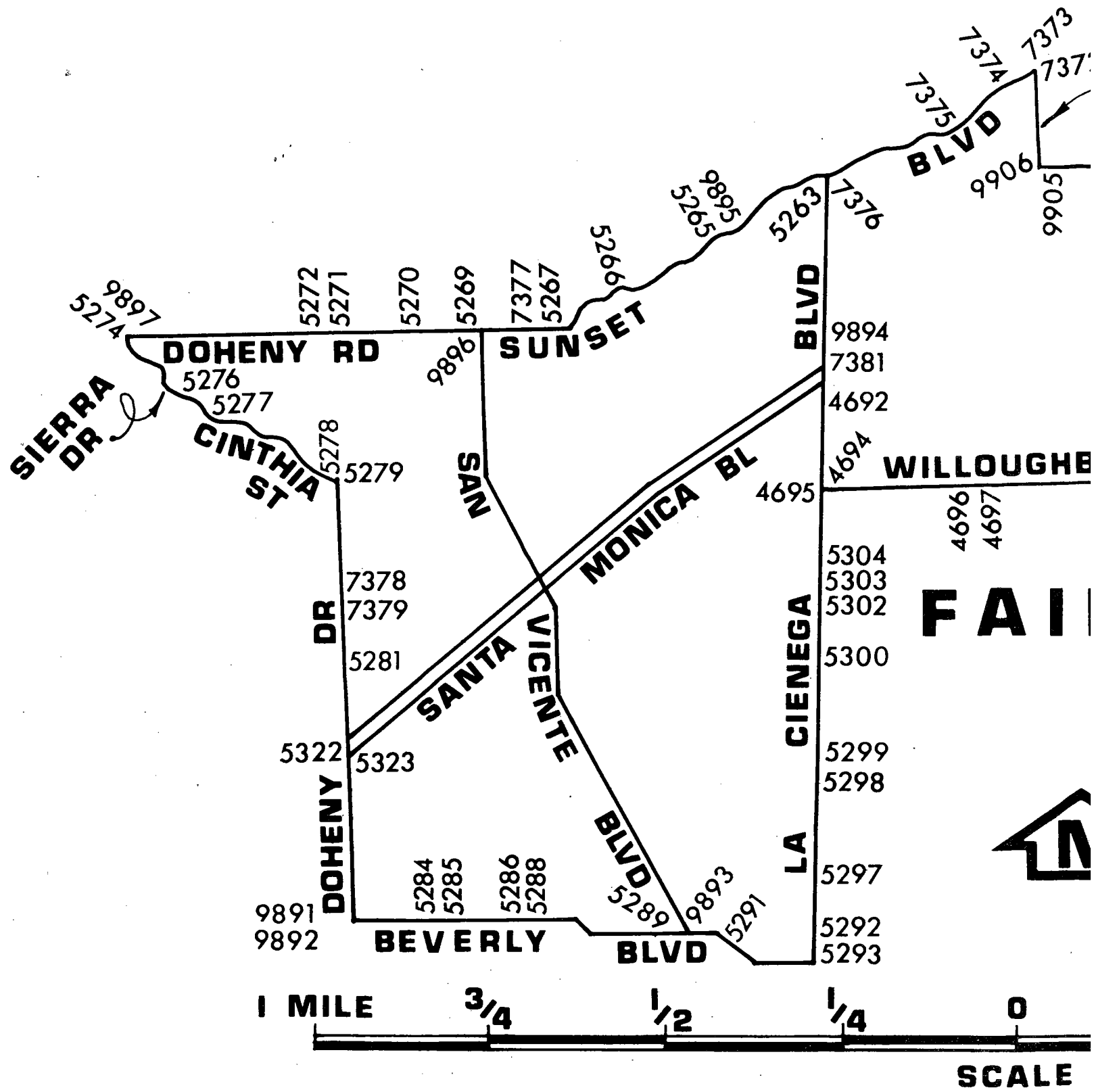
9-10-79



FAIRFAX INDEX PG 1



SCALE



QUAD-YEAR	ELEV	DESCRIPTION (INCLUDE QUAD AND YEAR IN DESCRIPTION)	BM NUMBER
CULVER (1980)	320.357	LACE HEX DRILL STEEL MON IN WELL DN 8IN @ CR NR C/L INT STOCKER ST & FAIRFAX AVE	CY 4346
CULVER (1980)	340.348	RD MON IN WELL @ PI 660FT E/O FAIRFAX AVE & 14FT N/O C/L STOCKER ST	CY 4347
CULVER (1980)	363.911	L&BR SCREW CTR HDWL CF CULV FOR GIL PIPES 1070FT E/O C/L FAIRFAX AVE & 58FT N/O C/L STOCKER ST MKD (PBM NO 216)	CY 4348
CULVER (1980)	404.943	L&BR SCREW S CB TRAFFIC ISLAND ON STOCKER ST OPP LIGHT STANDARD 677FT W/O C/L LA BREA AVE MKD (PBM NO 215)	CY 4349
CULVER (1980)	430.332	R D MON 6IN DN CN OR NR C/L INT STOCKER ST & LA BREA AVE	CY 4350
CULVER (1980)	431.849	R D MON 12IN DN CN CR NR C/L INT OVERHILL DR & OLD STOCKER ST C/L TO E	CY 4351
CULVER (1980)	199.279	L&BN S CB 2FT E BCR @ SE COR STOCKER ST & PRESIDIO DR 28FT S & 45FT E C/L INT	CY 4360
CULVER (1980)	156.226	FLT HD SPK E CB NW COR C B CN SE COR ANGELES VISTA BLVD & STOCKER ST 4FT S/O BCR 58FT S & 28FT N/O C/L INT	CY 4362
CULVER (1980)	130.624	L&FLT HD SPK @ W END DROP INLET @ NW COR STOCKER ST & CRENSHAW BLVD 26FT N & 97FT W/O C/L INT	CY 4363
CULVER (1980)	114.538	LACE TRAVERSE DISC IN WELL @ C/L INT CRENSHAW BLVD & SANTA BARBARA AVE MKD (HOLLY H-11A 1947)	CY 4364
CULVER (1980)	131.440	CS MON IN WELL 1FT OFF ST EDGE OF WK 5FT BACK OF MCR @ SE COR CRENSHAW BLVD & VERNON AVE MKD (BM 27 56 1953 RE 63)	CY 4365
FAIRFAX (1980)	228.043	LA CITY SUR MON IN WELL 12IN DN ON C/L LA CIENEGA BLVD & 66FT N/O C/L ROMAINE ST MKD (C-2A RESET 1970)	CY 4692
FAIRFAX (1980)	203.309	FLAT HD SPK E CB 6FT N BCR 33FT E C/L LA CIENEGA BLVD & 35FT N C/L WILLOUGHBY AVE	CY 4694
FAIRFAX (1980)	202.550	WIRE SPK S CB 15FT E BCR 15FT S C/L WILLOUGHBY AVE & 60FT E C/L LA CIENEGA BLVD	CY 4695
FAIRFAX (1980)	213.044	L&T W CB 4FT N BCR 24FT N C/L WILLOUGHBY AVE & 18FT W C/L ORLANDO AVE	CY 4696
FAIRFAX (1980)	212.208	WIRE SPK 4FT S BCR 21FT E C/L ORLANDO AVE & 30FT S C/L WILLOUGHBY AVE	CY 4697

QUAD-YEAR	ELEV	DESCRIPTION (INCLUDE QUAD AND YEAR IN DESCRIPTION)	BM NUMBER
FAIRFAX (1980)	238.294	L&BN S CB 15FT E/O BCR 15FT S/O C/L WILLOUGHBY AVE & 50FT E/O C/L CRESCENT HEIGHTS BLVD	CY 4701
FAIRFAX (1980)	258.400	L&T W CB 3FT N/O BCR 30FT N/O C/L WILLOUGHBY AVE & 15FT W C/L GENESEE AVE	CY 4704
FAIRFAX (1980)	258.654	L&T E CB GENESEE AVE 12FT N BCR @ NE COR WILLOUGHBY AVE 35FT N & 15FT E/O C/L INT	CY 4705
FAIRFAX (1980)	261.094	WIRE SPK N CB 6FT E BCR 15FT N C/L WILLOUGHBY AVE & 33FT E C/L SIERRA BONITA AVE	CY 4707
FAIRFAX (1980)	257.113	WIRE SPK E CB 4FT S BCR 35FT S C/L WILLOUGHBY AVE & 15FT E C/L MARTEL AVE	CY 4709
FAIRFAX (1980)	268.746	WIRE SPK W CB LA BREA AVE 50FT N/O C/L WILLOUGHBY AVE 40FT W/O C/L LA BREA AVE	CY 4710
CULVER (1980)	27.336	L&BR N CB PLAYA ST 20FT W BCR @ NW COR RUDMAN DR & PLAYA ST 59FT W & 38FT N/O C/L INT	CY 4752
CULVER (1980)	51.607	RDBM TAG E CB 2FT S BCR @ SE COR RANCH RD & OVERLAND AVE 28FT E & 68FT S C/L INT	CY 4754
CULVER (1980)	55.897	L&BR SCREW E CB @ BCR NE COR KELMORE ST & OVERLAND AVE 84FT N & 28FT E/O C/L INT	CY 4755
CULVER (1980)	81.171	LACE MON 18IN DN IN WELL ON C/L JEFFERSON BLVD 65FT N/O INT LEAHY ST & JEFFERSON BLVD (APPROX BEG OF CURVE)	CY 5152
CULVER (1980)	95.683	E 3/4IN HEX BAR OF 2 BARS IN CONC 10IN DN IN WELL @ C/L INT RODEO RD & LA CIENEGA BLVD	CY 5155
CULVER (1980)	99.384	LACE HEX BAR MON 10IN DN IN WELL APPROX C/L INT RODEO RD & HAUSER BLVD	CY 5156
CULVER (1980)	102.438	LACE HEX BAR MON 10IN DN IN WELL C/L RODEO RD & 32FT E/O C/L RODEONDO BLVD	CY 5157
CULVER (1980)	98.433	LACE MON 13IN DN IN WELL @ C/L INT RODEO RD & LA BREA AVE	CY 5158
CULVER (1980)	99.395	CS MON IN WELL @ SE COR SANTA BARBARA AVE & COLISEUM ST 1FT BACK OF CB @ JCT NE EDG WK & CB MKD (BM 27 54 1953 RE 69)	CY 5159
CULVER (1980)	179.188	BT SPK IN CONC CB 74FT W & 168FT S/O INT CRENSHAW BLVD & 57TH ST	CY 5160

QUAD-YEAR	ELEV	DESCRIPTION (INCLUDE QUAD AND YEAR IN DESCRIPTION)	BM NUMBER
CULVER (1980)	179.334	CS MON IN WELL 8IN DN ON SW COR CRENSHAW BLVD & 57TH ST 50FT S & 82FT W C/L INT 10FT W OF W CB MKD (BM 27 57C 1960)	CY 5161
CULVER (1980)	160.570	CS MON 9IN DN IN WELL 45FT W C/L CRENSHAW BLVD & 75FT N C/L 66TH ST MKD (BM 27 58A 1960 RE 5869) 4FT W/O CB FACE	CY 5162
BASELINE (1975)	160.117	USC&GS MON FL 49FT E & 118FT S/O INT CRENSHAW BLVD & 67TH ST 12FT NW OF N RAIL AT&SFRR & 13FT E/O E CB CRENSHAW BLVD MKD (A-415 1935)	CY 5163
BASELINE (1975)	159.178	USC&GS MON 13IN UP 187FT E & 39FT S/O INT OF CRENSHAW BLVD & 67TH ST & 67FT W/O INT S CB & AT&SFRR MKD (Z-414 1935)	CY 5164A
BASELINE (1975)	175.876	USC&GS MON 2IN DN 63FT NLY & 80FT WLY C/L INT FLORENCE AVE & REDONDC BLVD 12FT N/O N CB & 23FT SLY SFRR TRACK (MKD V 415-1935)	CY 5166
BASELINE (1975)	173.631	USC&GS DISC FLUSH 12FT N OF N CB 70FT N C/L FLORENCE AVE & 1180FT E/O PRAIRIE AVE MKD (X-415 1935) 380FT W/O C/L REDONDC BLVD	CY 5168
BASELINE (1975)	165.146	USC&GS DISC LIN UP 7FT N OF N CB & 62FT N C/L FLORENCE AVE & 2FT E C/L PRCD PRAIRIE AVE MKD (E 416 1935)	CY 5169
BASELINE (1975)	130.026	USC&GS MON 3IN UP 60FT NLY & 54FT WLY C/L INT FLORENCE AVE & LA BREA AVE (MKD D 417 1935)	CY 5173
BASELINE (1975)	128.628	USC&GS DISC 2IN UP 4FT N OF N CB & 34FT N C/L FLORENCE AVE & 200FT W C/L LA BREA AVE & 34FT SE C/L SFRR TRACKS MKD (E 417 1935)	CY 5174
BASELINE (1975)	73.487	LACE 3/4IN HEX BAR IN WELL THORNBURN ST @ PI 477FT W C/L LA CIENEGA BLVD	CY 5180
BASELINE (1975)	83.732	LACE 3/4IN HEX BAR IN WELL @ C/L INT LA TIJERA BLVD & THORNBURN ST (TO THE E)	CY 5181
BASELINE (1975)	45.090	LACE 3/4IN HEX BAR IN WELL CENTINELA AVE @ PI 0.65MI SE SEPULVEDA BLVD 358FT SE C/L GREEN VALLEY CIRCLE	CY 5182
BASELINE (1975)	48.930	LACE 3/4IN HEX BAR IN WELL 9FT SW C/L CENTINELA AVE 0 45MI SE SEPULVEDA BLVD @ TOP OF A HILL	CY 5183
CULVER (1980)	110.151	RDBM TAG W CB LA TIJERA BLVD 27FT S C/L PRCD KNOWLTON ST	CY 5187

QUAD-YEAR	ELEV	DESCRIPTION (INCLUDE QUAD AND YEAR IN DESCRIPTION)	BM NUMBER
CULVER (1980)	111.060	FLT HD SPK N CB 1FT E BCR @ NE COR LA TIJERA BLVD & KNOWLTON ST 18FT N & 60FT E C/L INT	CY 5188
CULVER (1980)	125.701	LACE MON IN WELL 10IN DN 35FT N & 5FT E C/L INT LA CIENEGA BLVD & CENTINELA AVE	CY 5189
CULVER (1980)	141.545	RDBM TAG W CB LA CIENEGA BLVD SERVICE ISLAND 1FT N BCR 42FT W C/L LA CIENEGA 28FT N C/L 64TH ST	CY 5191
CULVER (1980)	141.929	WIRE SPK W CB LA CIENEGA BLVD SERVICE ROAD 5FT N BCR 88FT W C/L LA CIENEGA & 47FT N C/L 64TH ST	CY 5192
CULVER (1980)	160.337	RDBM TAG E SIDE CATCH BASIN CTR ISLAND LA CIENEGA BLVD 10FT N/O PI 328FT S/O SLAUSON AVE	CY 5193
CULVER (1980)	254.830	L&BR SCREW CHIS SQ E SIDE E CONC GUTTER LA CIENEGA BLVD 0.25MI N SLAUSON AVE (NR TOP HILL) MKD (PBM 255)	CY 5195
CULVER (1980)	291.707	L&T W EDGE OF CONC GUTTER OF LA CIENEGA BLVD 13FT W PI 580FT S GIL FIELD RD OVERPASS NO B 983 15FT N/W PP #1781664E & 0.5MI N/O STOCKER ST MKD (BM)	CY 5196
CULVER (1980)	299.147	L&T W CB LA CIENEGA BLVD 38FT W PI 445FT N OF OIL FIELD RD OVERPASS NO B 983 & 0.7MI S/O WRIGHTCREST DR MKD (BM)	CY 5197
CULVER (1980)	114.919	L&T E CB SERVICE ISLAND 25FT W PI LA CIENEGA BLVD 0.2MI S RODEO RD MKD (BM)	CY 5199
CULVER (1980)	100.457	L&SCREW CTR CB RET 63FT N/O C/L SLAUSON AVE @ DOUBLE DRIVE END TO HOLY CROSS CEMETERY 0.5MI E/O SEPULVEDA BLVD	CY 5204
CULVER (1980)	143.613	USC&GS MON FL 50FT S C/L SLAUSON AVE 1100FT E ENT TO HOLY CROSS CEMETERY 0.15MI W/O BUCKINGHAM PKWY 79FT W/O W EDGE OF 2ND C B W/O BUCKINGHAM PKWY MKD (P-169 1934)	CY 5208
CULVER (1980)	171.115	L&SCREW IN CB 1FT E BC 37FT W & 38FT S C/L INT SLAUSON AVE & SHENANDOAH AVE	CY 5211
CULVER (1980)	175.281	RDBM TAG IN CB 1FT N BC 117FT N & 18FT E C/L INT SLAUSON AVE & SHENANDOAH AVE	CY 5212
CULVER (1980)	192.031	RDBM TAG IN CB 5FT N BC 119FT N & 18FT E C/L C/L INT SLAUSON AVE & CORNING AVE	CY 5213

QUAD-YEAR	ELEV	DESCRIPTION (INCLUDE QUAD AND YEAR IN DESCRIPTION)	BM NUMBER
CULVER (1980)	189.472	PK IN S CB SLAUSON AVE 90FT W & 38FT S C/L INT SLAUSON AVE & CORNING AVE	CY 5214
CULVER (1980)	235.703	L&BN S CB OF SERV RD 1FT W/O BCR @ SW COR SLAUSON AVE & KINGS RD 78FT S & 45FT W/O C/L INT MKD (BM)	CY 5216
CULVER (1980)	237.535	LA CITY HEX BAR MON IN WELL 12IN DN @ C/L INT KINGS RD & SLAUSON AVE	CY 5217
CULVER (1980)	327.649	R D MON IN WELL 6IN DN @ PI CURVE 175FT E C/L INT FAIRFAX AVE & STOCKER ST	CY 5235
CULVER (1980)	152.514	RDBM TAG IN CB 2FT S BCR @ SE COR STOCKER ST & ANGELES VISTA BLVD 45FT S & 52FT E C/L INT	CY 5241
CULVER (1980)	128.550	LACE HEX BAR MON IN WELL 9IN DN @ C/L INT CRENSHAW BLVD & STOCKER ST	CY 5242
FAIRFAX (1980)	309.791	STD TRAVERSE MON C/L LA BREA AVE 15FT N/O C/L FOUNTAIN AVE MKD (HWD GIC)	CY 5243
FAIRFAX (1980)	311.375	RDBM TAG W CB ALTA VISTA BLVD 95FT N & 20FT W C/L INT ALTA VISTA BLVD & FOUNTAIN AVE	CY 5246
FAIRFAX (1980)	318.299	RDEM TAG W CB VISTA ST 16FT W & 135FT N/O C/L INT VISTA ST & FOUNTAIN AVE	CY 5248
FAIRFAX (1980)	329.667	RDBM TAG E CB CURSON AVE 14FT E & 150FT N C/L INT CURSON AVE & FOUNTAIN AVE	CY 5249
FAIRFAX (1980)	329.678	RDBM TAG W CB CURSON AVE 14FT W & 150FT N C/L INT CURSON AVE & FOUNTAIN AVE	CY 5250
FAIRFAX (1980)	329.140	RDBM TAG W CB GENESEE AVE 15FT W & 110FT S C/L INT GENESEE AVE & FOUNTAIN AVE	CY 5252
FAIRFAX (1980)	339.769	RDBM TAG E CB 32FT E C/L CRESCENT HEIGHTS BLVD & 83FT S C/L FOUNTAIN AVE	CY 5256
FAIRFAX (1980)	340.471	RDBM TAG W CB 32FT W C/L CRESCENT HEIGHTS BLVD & 65FT S C/L FOUNTAIN AVE	CY 5257
FAIRFAX (1980)	409.558	CUT SPK S CB @ E END CATCH BASIN 2FT W BCR & SW COR SUNSET BLVD & MILLER DR 12FT S/O C/L MILLER DR & 126FT W/O C/L PROD LA CIENEGA BLVD	CY 5263
FAIRFAX (1980)	384.659	L&BN W CB @ N END C B 30FT W/O C/L SUNSET PLAZA DR & 100FT N/O C/L SUNSET BLVD	CY 5265

QUAD-YEAR	ELEV	DESCRIPTION (INCLUDE QUAD AND YEAR IN DESCRIPTION)	BM NUMBER
FAIRFAX (1980)	360.089	CUT SPK N CB SUNSET BLVD 33FT E OF E CB SHERBOURNE DR @ W END C B 34FT N & 43FT W/O C/L INT	CY 5266
FAIRFAX (1980)	343.063	CUT SPK N CB SUNSET BLVD 27FT W OF W CB HORN AVE @ E END C B 34FT N & 43FT W/O C/L INT	CY 5267
FAIRFAX (1980)	360.633	L&FLAT HD SPK NR CTR CF NW CB RET SUNSET BLVD & CLARK ST 40FT N & 25FT W/O C/L INT	CY 5269
FAIRFAX (1980)	376.068	WIRE SPK E CB HILLDALE AVE 25FT N OF N CB SUNSET BLVD @ S END C B 60FT N & 17FT E/O C/L INT	CY 5270
FAIRFAX (1980)	411.083	CUT SPK W CB DOHENY DR 60FT N OF N P/L SUNSET BLVD @ S END C B 106FT N & 20FT W/O C/L INT	CY 5271
FAIRFAX (1980)	406.380	CUT SPK N CB 5FT W BCR @ NW COR SUNSET BLVD & DOHENY DR 47FT W & 35FT N C/L INT MKD (BM)	CY 5272
FAIRFAX (1980)	455.664	L&BR NR CTR CURVE @ SW COR DOHENY RD & SIERRA PL 33FT S & 35FT W C/L INT STAMPED (BM)	CY 5274
FAIRFAX (1980)	399.195	CUT SPK IN N CB SUNSET BLVD 42FT N/O C/L & 202FT E/O C/L SIERRA DR TO NORTH @ SW END C B	CY 5276
FAIRFAX (1980)	396.693	L&N 1FT E BCR @ SE COR SUNSET BLVD & SIERRA DR 42FT S & 202FT E/O C/L INT TO NORTH	CY 5277
FAIRFAX (1980)	312.886	ROUND HD SPK W CB 5FT N/O BCR @ NW COR CINTHIA ST & DOHENY DR 25FT W & 70FT N/O C/L INT MKD (BM)	CY 5278
FAIRFAX (1980)	310.140	L&T E CB 6FT N BCR @ NE COR DOHENY DR & CINTHIA ST 25FT E & 35FT N/O C/L INT	CY 5279
FAIRFAX (1980)	253.581	WIRE SPK E CB 1FT S BCR @ SE COR DOHENY DR & LLCYD PL 25FT E & 25FT S OUT INT	CY 5281
FAIRFAX (1980)	199.203	SPK&W IN E CB @ SE COR WETHERLY DR & BEVERLY BLVD 15FT E & 70FT S/O C/L INT (10FT S/O BCR)	CY 5284
FAIRFAX (1980)	193.635	L&N IN N CB @ BCR @ NW COR BEVERLY BLVD & ALMONT DR 35FT N & 35FT W/O C/L INT MKD (BM)	CY 5285
FAIRFAX (1980)	184.963	WIRE SPK S CB BEVERLY BLVD 17FT W OF W P/L SWALL DR @ E END C B 35FT S & 45FT W/O C/L INT	CY 5286
FAIRFAX (1980)	181.535	LACE HEX MON IN WELL 8IN DN C/L BEVERLY BLVD & 143FT E C/L SWALL DR	CY 5288

QUAD-YEAR	ELEV	DESCRIPTION (INCLUDE QUAD AND YEAR IN DESCRIPTION)	BM NUMBER
FAIRFAX (1980)	167.842	LACE HEX MON IN WELL 8IN DN C/L BEVERLY BLVD & 250FT W/O W CB LINE SHERBOURNE DR 265FT W/O C/L INT (LA 13 14750)	CY 5289
FAIRFAX (1980)	163.266	CUT SPK @ SE COR CATCH BASIN 4FT E OF E CB HUNTLEY DR & 3FT N/O N P/L BEVERLY PL 19FT E/O C/L HUNTLEY DR & 30FT N/O C/L BEVERLY PL	CY 5291
FAIRFAX (1980)	162.502	WIRE SPK N CB BEVERLY BLVD 18FT E OF E P/L LA CIENEGA BLVD 1FT W OF CATCH BASIN 35FT N/O & 70FT E/O C/L INT	CY 5292
FAIRFAX (1980)	161.247	LA CITY MON IN WELL 10IN DN @ C/L INT BEVERLY BLVD & LA CIENEGA BLVD MKD (HOLLYWOOD C-3A 1948)	CY 5293
FAIRFAX (1980)	168.284	CUT SPK SE COR CATCH BASIN 4FT E OF E CB LA CIENEGA BLVD 5FT N OF N P/L GAKWOOD ST 38FT E & 30FT N/O C/L INT	CY 5297
FAIRFAX (1980)	174.227	WIRE SPK S CB ROSEWOOD AVE 5FT E OF E P/L LA CIENEGA BLVD @ E END C B 15FT S & 56FT E/O C/L INT MKD (BM)	CY 5298
FAIRFAX (1980)	173.012	LA CITY HEX MON IN WELL 15IN DN ON C/L LA CIENEGA BLVD & 10FT S/O C/L ROSEWOOD AVE E	CY 5299
FAIRFAX (1980)	176.303	USC&GS MON FLUSH 1FT W/O W CB LA CIENEGA BLVD & 250FT S/O S CB MELROSE AVE MKD (USC&GS BM J-775-1945)	CY 5300
FAIRFAX (1980)	185.394	LA CITY MON IN WELL 18IN DN @ C/L INT LA CIENEGA BLVD & MELROSE PL MKD (C-2B RESET 1970)	CY 5302
FAIRFAX (1980)	186.775	CUT SPK @ NW COR CATCH BASIN 4FT N OF N CB MELROSE PL & 3FT E/O E P/L LA CIENEGA BLVD 28FT N & 51FT E/O C/L INT	CY 5303
FAIRFAX (1980)	192.939	WIRE SPK E CB LA CIENEGA BLVD 9FT N OF N P/L WARING AVE @ S END C B 36FT N & 34FT E/O C/L INT MKD (BM)	CY 5304
FAIRFAX (1980)	226.522	CUT SPK N CB SANTA MONICA BLVD MIDWAY BETWEEN DOHENY DR & GAKHURST DR @ E END CATCH BASIN 47FT N/O N BARREL SANTA MONICA BLVD & 83FT W/O DOHENY DR	CY 5322
FAIRFAX (1980)	225.686	CS MON IN WELL 12IN DN 3FT E C/L DOHENY DR & 20FT N C/L N BARREL SANTA MONICA BLVD MKD (RE 5869) USE W EDGE	CY 5323
CULVER (1980)	96.578	RDBM TAG N CB 1FT E BCR @ NE COR LA CIENEGA BLVD & RODEO RD 38FT N & 62FT E APPROX C/L INT	CY 6800

QUAD-YEAR	ELEV	DESCRIPTION (INCLUDE QUAD AND YEAR IN DESCRIPTION)	BM NUMBER
BASELINE (1975)	28.019	USC&GS BR DISC NWLY COR CONC BR @ SW COR SEPULVEDA BLVD & CENTINELA AVE 75FT S & 50FT W C/L INT MKD (M 776 RESET 1962)	CY 6802
BASELINE (1975)	28.430	CS MON FL NELY COR CONC BR 50FT ELY C/L SEPUL- VEDA BLVD 165FT SLY C/L CENTINELA AVE MKD (BM 28-68)	CY 6803
BASELINE (1975)	159.185	LACE HEX BAR MON IN WELL @ C/L INT CRENSHAW BLVD & FLORENCE AVE (26-62 CC ENGR)	CY 6804
BASELINE (1975)	158.248	WIRE SPK W CB 5FT N BCR @ NW COR CRENSHAW BLVD & FLORENCE AVE 60FT N & 38FT W C/L INT	CY 6805
BASELINE (1975)	172.731	USC&GS MON 2IN UP 77FT WLY C/L WEST BLVD 10FT N/O N RAIL RR TRACK 89FT S/O C/L REDONDO BLVD MKD 1 415- 1935	CY 6806
BASELINE (1975)	177.900	USC&GS MON 9IN UP 325FT ELY & 43FT NLY C/L INT FLORENCE AVE & REDONDO BLVD 15FT SLY SFRR TRACK MKD (S 415-1935)	CY 6807
BASELINE (1975)	179.004	USC&GS MON VERTICALLY IN SIGNAL BOX NELY COR FLORENCE AVE & REDONDO BLVD 35FT NLY & 100FT ELY C/L INT MKD (E 973 1964)	CY 6808
BASELINE (1975)	148.328	USC&GS MON 6IN UP 30FT NLY SFRR TRACK 113FT NLY FLORENCE AVE & 200FT WLY CENTINELA AVE MKD (P 978-1964)	CY 6809
BASELINE (1975)	130.204	USC&GS MON 3IN UP NE COR LA BREA AVE & FLORENCE AVE 150FT E & 75FT N C/L INT 6FT NLY AT&SF RR TRACK MKD (S 978 1964)	CY 6810
BASELINE (1975)	124.315	USC&GS MON 6IN UP 350FT W LA BREA AVE & 12FT N OF N CB FLORENCE AVE MKD (Z 978 1964) SURVEY MARKER POST 3FT UP 2FT W	CY 6811
BASELINE (1975)	76.234	CS MON FL IN C B SELY COR INDUSTRIAL AVE & LA CIENEGA BLVD 18FT SLY & 75FT ELY C/L INT MKD (BM 28-11A 1965)	CY 6812
BASELINE (1975)	45.017	LACE HEX BAR IN WELL 18IN DN 21FT W OF PI OF CENTINELA AVE 0.65MI SE SEPULVEDA BLVD 338FT SE C/L GREEN VALLEY CIRCLE	CY 6813
CULVER (1980)	114.277	CS MON 8IN DN IN DIVIDER STRIP ABT 0.2MI S RODEC RD & 3FT W C/L LA CIENEGA BLVD NR PI MKD (BM 29-1A 1965)	CY 6815

QUAD-YEAR	ELEV	DESCRIPTION (INCLUDE QUAD AND YEAR IN DESCRIPTION)	BM NUMBER
CULVER (1980)	219.127	CS MON FL IN C B ABOUT 46FT W/O APPROX C/L LA CIENEGA BLVD & NR 1.0MI N STOCKER ST MKD (BM 29-2A 1965)	CY 6816
CULVER (1980)	299.160	CS MON IN WELL 8IN DN IN DIVIDER ISLAND NR PI ABT 450FT N OF OIL FIELD RD OVERPASS B 983 & 0.7MI S/O WRIGHTCREST DR (BM 29-3A 1965)	CY 6817
CULVER (1980)	283.412	CS MON FL IN C B ABT 44FT E APPROX C/L LA CIENEGA BLVD & ABT 800FT S OF OIL FIELD RD OVERPASS B 983 0.5MI N/O STOCKER ST MKD (BM 29-4A 1965)	CY 6818
CULVER (1980)	262.874	L&BN 1FT E/O E CB LA CIENEGA BLVD @ C B APPROX 690FT N/O C/L STOCKER ST	CY 6819
CULVER (1980)	270.866	RD MON FL C/L LA CIENEGA BLVD APPROX 355FT N/O C/L STOCKER ST MKD (1969)	CY 6820
CULVER (1980)	185.570	LA CITY HEX BAR MON 24IN DN ON SEMI-TAN OF LA CIENEGA BLVD FROM THE S & NR C/L SLAUSON AVE	CY 6822
CULVER (1980)	167.959	LA CITY MON IN WELL 8IN DN 15FT E OF E CB SERVICE RD (W) IN FRONT OF HSE 6013 LA CIENEGA BLVD & 0.3MI S/O SLAUSON AVE	CY 6823
CULVER (1980)	178.398	LA CITY MON IN WELL 9IN DN 6FT WLY C/L INT STOCKER ST & DON FELIPE DR	CY 6825
CULVER (1980)	204.197	USC&GS MON FL IN C B ON SWLY COR STOCKER ST & PRESIDIO DR ABOUT 90FT SLY & 18FT WLY APPROX C/L INT MKD (Z 977 1964)	CY 6826
CULVER (1980)	263.455	CS MON FL BACK OF C B @ SWLY COR STOCKER ST & VALLEY RIDGE AVE ABOUT 20FT WLY & 70FT SLY C/L INT MKD (BM 54-4 A 1965)	CY 6827
CULVER (1980)	265.343	LA CITY MON IN WELL 9IN DN ON C/L DON TOMASO DR 30FT WLY C/L VALLEY RIDGE AVE	CY 6828
CULVER (1980)	288.238	L&BN NLY CB 1FT E BCR @ NELY COR STOCKER ST & DON MIGUEL DR 47FT ELY & 34FT NLY C/L INT MKD (BM)	CY 6829
CULVER (1980)	291.361	CS MON FL IN BACK C B NW COR STOCKER ST & DON MIGUEL DR 60FT NLY & 51FT WLY C/L INT MKD (BM 54-5 A 1965)	CY 6830
CULVER (1980)	312.311	USC & GS MON FL BK C B 38FT S/O C/L STOCKER ST & 750FT W/O DON MIGUEL DR OPP BLDG NO 4471 MKD (Y 977 1964)	CY 6831

QUAD-YEAR	ELEV	DESCRIPTION (INCLUDE QUAD AND YEAR IN DESCRIPTION)	BM NUMBER
CULVER (1980)	346.635	RDBM TAG NLY CB 1FT ELY BCR @ NELY COR STOCKER ST & DCN LORENZO DR 34FT NLY & 48FT ELY C/L INT	CY 6832
CULVER (1980)	351.805	LA CITY MON IN WELL 9IN DN ON C/L STOCKER ST & 137FT WLY C/L DCN LORENZO DR MKD (C-12 1964)	CY 6833
CULVER (1980)	432.261	RD MON IN WELL 9IN DN 130FT S C/L INT STOCKER ST & LA BREA AVE 130FT SLY ON PROD 2FT W OF W TRAFFIC SIGNAL	CY 6834
CULVER (1980)	419.655	FLAT HD SPK N CB 4FT E BCR @ NE COR LA BREA AVE & DCN LORENZO DR 105FT E & 18FT N C/L INT	CY 6836
CULVER (1980)	231.137	LA CITY MON IN WELL 18IN DN 3FT E C/L INT SLAUSON AVE & KENISTON AVE TO S MKD (INGLEWOOD 1958)	CY 6838
CULVER (1980)	233.108	SQ HD SPK W CB 4FT N BCR @ NW COR SLAUSON AVE & KENISTON AVE 15FT W & 60FT N C/L INT	CY 6839
BASELINE (1975)	26.027	LACE HEX ROD IN WELL 10IN DN @ C/L INT SEPULVEDA BLVD & CENTINELA AVE (NLY MON)	CY 6879
FAIRFAX (1980)	286.375	L&BN S CB SANTA MONICA BLVD 2FT W C B @ SE COR SANTA MONICA BLVD & LA BREA AVE 27FT S & 53FT E C/L INT	CY 7367
FAIRFAX (1980)	285.063	LACE TRAV MON 12IN DN ON C/L LA BREA AVE 20FT N C/L SANTA MONICA BLVD MKD (CITY OF L A ENG MON G-2)	CY 7368
FAIRFAX (1980)	309.311	L&BN S CB FOUNTAIN AVE 10FT W BCR @ SW COR LA BREA AVE & FOUNTAIN AVE 27FT S & 60FT W C/L INT	CY 7369
FAIRFAX (1980)	388.447	CS BR CAP MON IN NW COR OF CULV @ NE COR SUNSET BLVD & SWEETZER AVE 36FT N & 25FT E C/L INT MKD (BM 62-6)	CY 7372
FAIRFAX (1980)	388.515	WIRE SPK N CB SUNSET BLVD @ E END C B LOC 25FT E/O E CB LN SWEETZER AVE 35FT E & 30FT N C/L INT	CY 7373
FAIRFAX (1980)	387.417	WIRE SPK N CB SUNSET BLVD 5FT W BCR @ NW COR SUNSET BLVD & SWEETZER AVE 30FT N & 32FT W C/L INT	CY 7374
FAIRFAX (1980)	392.412	WIRE SPK 4FT W BCR @ NW COR KINGS RD & SUNSET BLVD 30FT N & 34FT W C/L INT	CY 7375
FAIRFAX (1980)	404.908	L&BN 10FT E BCR @ SE COR SUNSET BLVD & LA CIENEGA BLVD 45FT E & 33FT S C/L INT	CY 7376

QUAD-YEAR	ELEV	DESCRIPTION (INCLUDE QUAD AND YEAR IN DESCRIPTION)	BM NUMBER
FAIRFAX (1980)	343.504	USGS BR DISC FL BK OF WK @ ENT TO BLDG NO 8820 SUNSET BLVD 79FT W OF W CB LINE OF HORN ST PROD 48FT S/O C/L SUNSET BLVD MKD (6-1922)	CY 7377
FAIRFAX (1980)	262.468	CS MON 12IN DN @ C/L INT DOHENY DR & ELEVADO AVE FROM THE WEST 35FT S S M H MKD (CO ENG MON)	CY 7378
FAIRFAX (1980)	262.733	WIRE SPK E CB DOHENY DR 2FT S BCR @ SE COR ELEVADO AVE 20FT E & 22FT S/O C/L INT	CY 7379
FAIRFAX (1980)	238.122	SPK IN N CB OF SANTA MONICA BLVD NORTH BARREL 2FT E BCR @ NE COR OF LA CIENEGA BLVD 85FT E & 13FT N C/L INT	CY 7381
FAIRFAX (1980)	334.061	L&BN E CB SPAULDING AVE 9FT N C B 17FT E & 93FT N C/L INT SPAULDING AVE & FOUNTAIN AVE	CY 7383
BASELINE (1975)	162.267	BR DISK 43FT N BCR 100FT N & 28FT E C/L INT FLORENCE AVE & WEST BLVD MKD (OJA 1968 MWD)	CY 8237
BASELINE (1975)	176.874	USC&GS MON 2IN UP 455FT ELY & 43FT NLY C/L INT FLORENCE AVE & REDONDO BLVD 15FT SLY SFRR TRACK MKD (R415-1935)	CY 8238
BASELINE (1975)	172.037	USC&GS MON N EDGE TEL M H 1060FT ELY PRAIRIE AVE & 55FT NLY C/L FLORENCE AVE MKD (F 973 -1964) 500FT W/O REDONDO BLVD	CY 8239
BASELINE (1975)	163.915	USC&GS MON FL IN NW COR C B 3FT NLY CB 58FT NLY & 56FT WLY C/L INT FLORENCE AVE & PRAIRIE AVE MKD(K 973 - 1964)	CY 8240
BASELINE (1975)	152.949	USC&GS BR DISK 1FT N/O CB 12FT W/O BCR 46FT N & 73FT W C/L INT FLORENCE AVE & CENTINELA AVE MKD (N 978 -1964)	CY 8241
BASELINE (1975)	85.910	L & N 3FT N BCR 35FT NLY & 17FT ELY C/L INT HYDE PARK BLVD & GLENWAY DR	CY 8242
BASELINE (1975)	85.987	L & B 5FT NLY BCR 41FT NLY & 17FT WLY C/L INT HYDE PARK BLVD & GLENWAY DR	CY 8243
BASELINE (1975)	79.634	RAMSET 5FT WLY BCR 17FT NLY & 105FT WLY C/L INT LA CIENEGA BLVD & THORNBURN ST	CY 8244
BASELINE (1975)	84.211	L&SPK 0.7FT E BCR 18FT N & 58FT ELY C/L INT LA TIJERA BLVD & THORNBURN ST	CY 8245
CULVER (1980)	264.403	SPK 50FT W C/L LA CIENEGA BLVD CN C/L PROD STOCKER ST	CY 8246

QUAD-YEAR	ELEV	DESCRIPTION (INCLUDE QUAD AND YEAR IN DESCRIPTION)	BM NUMBER
CULVER (1980)	270.009	L & SPK W CB ISLAND LA CIENEGA BLVD 150FT N C/L STOCKER ST MKD (BM)	CY 8247
CULVER (1980)	280.113	BN @ N END 3 DROP INLETS 36FT W C/L LA BREA AVE NR P I 0.4MI N DCN LORENZO DR MKD (BM)	CY 8250
CULVER (1980)	421.637	L & T 1FT S BCR 63FT S & 40FT E C/L INT LA BREA AVE & DCN LORENZO DR	CY 8251
CULVER (1980)	27.192	L A CITY HEX MON IN WELL 10IN DN 12FT NLY & 43FT ELY C/L INT PLAYA ST & RUDMAN DR	CY 8255
BASELINE (1975)	159.848	L&T S CB FLORENCE AVE NR C/L PRCD WEST BLVD 35FT S/O C/L INT	CY 9233
BASELINE (1975)	151.338	L&PK IN N CB FLORENCE AVE 45FT N & 63FT W/O C/L PRCD LOCUST ST	CY 9234
BASELINE (1975)	151.794	L&PK 2FT W/O BCR @ SW COR FLORENCE AVE & LOCUST ST 40FT S & 160FT W/O C/L INT	CY 9235
BASELINE (1975)	114.705	USC&GS MON IN CONC CB @ ENT TO OVERHEAD PARKING LOT 20FT N/O FLORENCE PL & 200FT W/O C/L IVY AVE MKD (N-417 RESET 1973)	CY 9236
BASELINE (1975)	114.082	2IN IP W/CONC PLUG & CAP 30FT W & 200FT N/O INT EUCALYPTUS AVE & FLORENCE AVE MKD (KROEHLER MFG CO RE 2568)	CY 9237
BASELINE (1975)	77.525	L&SPK 1FT N/O BCR @ NE COR GLASGOW AVE & THORNBURN ST 39FT N & 18FT E/O C/L INT	CY 9238
BASELINE (1975)	77.315	L&SPK IN S CB THORNBURN ST 18FT S/O C/L NEAR C/L PRCD GLASGOW AVE	CY 9239
CULVER (1980)	134.405	L&BN IN CONC WK @ NW COR CRENSHAW BLVD & VERNON AVE 56FT N/O C/L VERNON AVE & 71FT W/O C/L CRENSHAW BLVD	CY 9327
CULVER (1980)	100.113	RDBM TAG IN CONC CB 56FT N & 56FT W/O INT SANTA BARBARA AVE & COLISEUM ST 20FT W BCR @ NW COR	CY 9328
CULVER (1980)	99.989	RDBM TAG CONC CB 40FT N & 68FT W/O INT RODEO RD & LA BREA AVE 5FT W/O BCR @ NW COR	CY 9329
CULVER (1980)	77.256	L&SPK IN CONC CB 40FT N & 22FT W/O APPROX INT JEFFERSON BLVD & HETZLER RD SE COR OF C B	CY 9330
CULVER (1980)	77.215	RDBM TAG CONC CB 40FT S & 32FT W/O APPROX INT JEFFERSON BLVD & HETZLER RD NE COR C B	CY 9331

QUAD-YEAR	ELEV	DESCRIPTION (INCLUDE QUAD AND YEAR IN DESCRIPTION)	BM NUMBER
CULVER (1980)	80.269	RDBM TAG CONC CB 38FT E & 34FT S/O APPROX INT JEFFERSON BLVD & LEAHY ST	CY 9332
CULVER (1980)	65.698	RDBM TAG CONC CB 42FT E & 66FT N/O APPROX INT JEFFERSON BLVD & RAINTREE CIR 1FT N/C BCR NE COR	CY 9333
CULVER (1980)	49.621	RDBM TAG CONC CB 36FT W & 106FT N INT JEFFERSON BLVD & OVERLAND AVE 1FT N/O BCR @ NW COR	CY 9335
CULVER (1980)	48.577	RDBM TAG CONC CB 133FT E & 44FT S/O INT JEFFER- SON BLVD & OVERLAND AVE 1FT E BCR @ SE COR	CY 9336
CULVER (1980)	20.114	RDBM TAG @ MCR SE COR SEPULVEDA BLVD & SLAUSON AVE 52FT E & 52FT S/O C/L INT	CY 9337
CULVER (1980)	21.430	RDBM TAG IN CB 107FT W & 36FT N C/L INT SEPUL- VEDA BLVD & SLAUSON AVE 39FT W BCR @ NW COR	CY 9338
CULVER (1980)	200.057	RDBM TAG S CB 3FT E/O BCR @ SE COR SLAUSON AVE & WEST BLVD TO THE SO 30FT S & 67FT E/O C/L INT	CY 9611
CULVER (1980)	237.304	RDBM TAG S CB 1FT W/O BCR @ SW COR 42FT W & 42FT S/O C/L INT SLAUSON AVE & VERDUN AVE	CY 9612
CULVER (1980)	314.092	RDBM TAG S CB 2FT E/O BCR @ SE COR 71FT E & 46FT S/O C/L INT SLAUSON AVE & OVERHILL DR	CY 9613
CULVER (1980)	314.302	RDBM TAG W CB 1FT S/O BCR @ NW COR 67FT N & 42FT W/O C/L INT SLAUSON AVE & OVERHILL DR	CY 9614
CULVER (1980)	241.746	RDBM TAG N CB 1FT W/O BCR @ NE COR 42FT N & 80FT E/O C/L INT SLAUSON AVE & LA BREA AVE	CY 9615
CULVER (1980)	237.296	RDBM TAG N CB 1FT W/O BCR @ NW COR 42FT N & 73FT W/O C/L INT SLAUSON AVE & LA BREA AVE	CY 9616
CULVER (1980)	259.991	RDBM TAG N CB 1FT E/O BCR @ NE COR 42FT N & 48FT E/O C/L INT SLAUSON AVE & FAIRFAX AVE	CY 9617
CULVER (1980)	112.815	RDBM TAG 1FT N/O BCR @ NW COR LA BREA AVE & COLISEUM ST 54FT N & 45FT W/O C/L INT	CY 9618
CULVER (1980)	178.205	BT SPK 2FT N/O BCR @ NW COR LA BREA AVE & VERONICA ST 43FT N & 42FT W/O C/L INT	CY 9619
CULVER (1980)	183.352	RDBM TAG 2FT S/O BCR N END OF C B @ SW COR LA BREA AVE & VERONICA ST 48FT S & 45FT W/O C/L INT	CY 9620
CULVER (1980)	298.642	RDBM TAG IN N WALL OF MOST SLY C B 39FT W/O C/L LA BREA AVE & 0.5MI S/O C/L VERONICA ST	CY 9621