

**COUNTY OF LOS ANGELES**

**ROAD DEPARTMENT**



**LONG BEACH QUAD**

**BENCH MARKS**

**1955**

## PREFACE

The Road Department level net is composed of more than 1,000 miles of levels supporting in excess of 10,000 bench marks. In 1964-65, a major readjustment of the net was undertaken. To emphasize the complete break with previous elevations, the SY, SG & SL series bench marks have been re-labeled BY, BG & BL, respectively.

To facilitate the adjustment, indexing, and distribution of adjusted values of the net, the County territory was divided into 31 quads or areas. For identification purposes each quad was given a name, viz., "Rosemead," "La Mirada," "Santa Fe," etc. When bench marks and elevations in the Road Department net are used, the name of the quad in which the bench mark is located and the date of the adjustment of the elevation must be included in the bench mark description, e.g.,

BG 1887 --L+BN IN CONC HDWL OF DRAIN PIPE UNDER DR 218 FT  
NE +18 FT SE C/L INT SAN JOSE HILLS RD +CAMERON AVE MKD (BM)  
( COVINA --1965 ) ELEV. 696.238

It is expected that this general adjustment will, for the most part, remain sound for the next 8 to 12 years. As new circuits are completed, however, re-adjustment of individual quads may become advisable. It is expected that these subsequent adjustments will be in the nature of a few hundredths of a foot. When a quad is re-adjusted, new elevation lists will be published and the date of the re-adjustment will replace the "1965" at the end of the bench mark description. Two bench marks in the same quad with different adjustment dates will not normally join each other. Since all adjustments taper out to nothing at the periphery of the quad, any bench mark in one quad will join any bench mark in another quad regardless of their respective adjustment dates.

The basic accuracy of the net is reflected by an indicated field probable error of plus or minus 0.012 foot per mile of leveling as determined from 298 conditions of closure. However, many years experience in vertical control in the greater Los Angeles basin and Antelope Valley indicate that because of varying degrees of subsidence and heaving, the true datum is recovered only by obtaining substantial agreement of a number of bench marks.

The users of this net are invited to assist in its maintenance by notifying this Department of cases of obliteration, apparent mistakes in descriptions or elevations, and proven disturbance of bench marks.

---

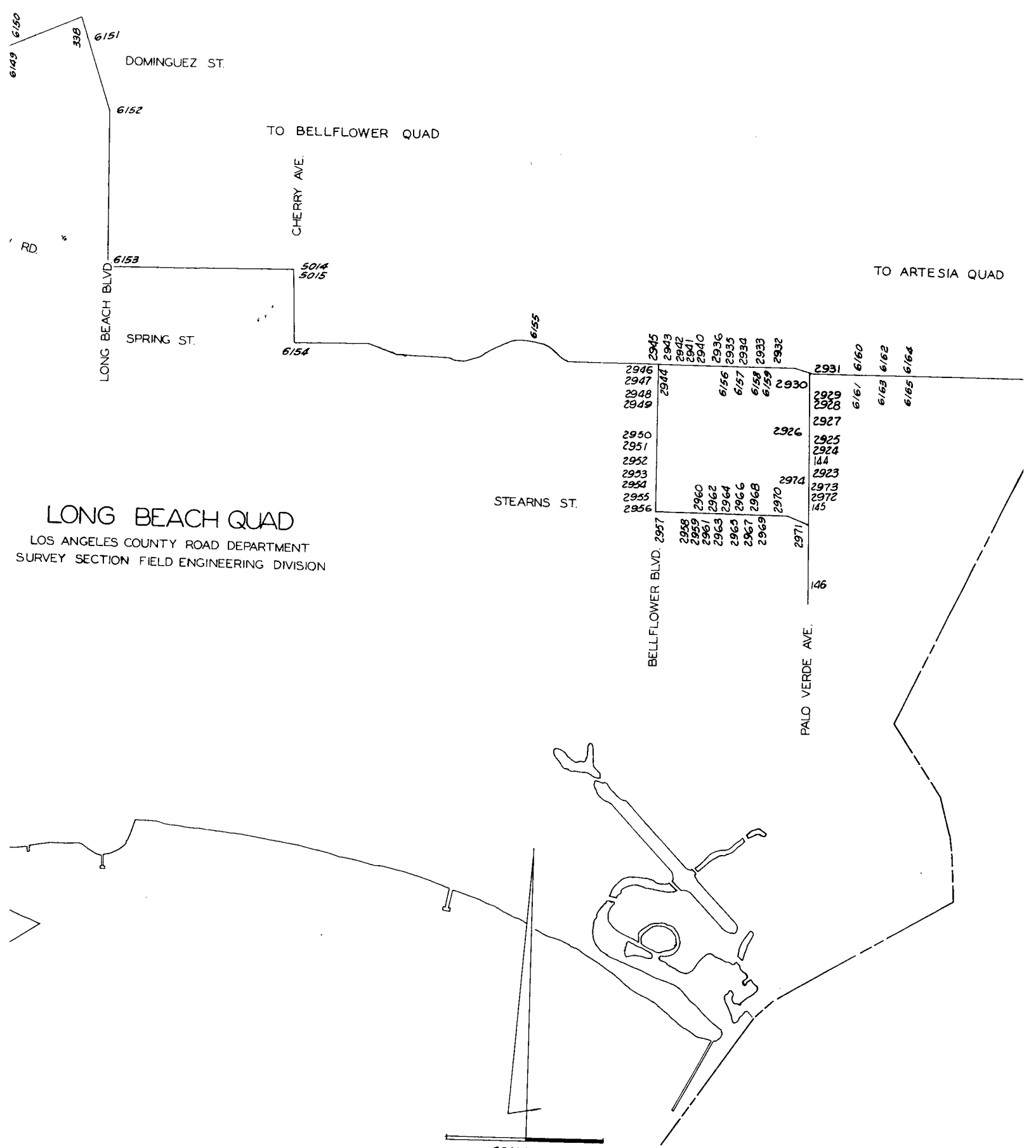
DATUM: U. S. Coast and Geodetic Survey Sea Level Datum of 1929, through the medium of the Los Angeles County Engineer Precise Level Net, 1963 Adjustment.

ABBREVIATIONS USED IN BENCH MARK LISTINGS

ABUT - - - - -	Abutment	EC - - - - -	End of Curve
ALG - - - - -	Along	ENT - - - - -	Entrance
ANG PT - - - - -	Angle Point	FL - - - - -	Floor
B/W - - - - -	Back of Walk	FTG - - - - -	Footing
BCR - - - - -	Beginning of Curb Return	F/W - - - - -	Front of Walk
BC - - - - -	Beginning of Curve	GAR - - - - -	Garage
BLDG - - - - -	Building	HDWL - - - - -	Headwall
EM - - - - -	Bench Mark	HSE - - - - -	House
BT SPK - - - - -	Boat or Bolt Spike	INT - - - - -	Intersection
BR CAP - - - - -	Brass or Bronze Cap	IP - - - - -	Iron Pipe
C B - - - - -	Catch Basin	LT - - - - -	Left
CTR - - - - -	Center	LACE - - - - -	L. A. City Engineer
C/L - - - - -	Center Line	LACS - - - - -	L. A. County Engineer
C/L INT - - - - -	Center Line Intersection	LAFC - - - - -	L. A. Co. Flood Control
C/L PROD - - - - -	Center Line Produced	L+BN - - - - -	Lead and Bench Nail
CONC - - - - -	Concrete	L+BR - - - - -	Lead and Brad
COR - - - - -	Corner	L+N - - - - -	Lead and Nail
COE - - - - -	Corps of Engineers	L+RDBM TAG - - - - -	Lead and Road Dept. Bench Mark Tag
CULV - - - - -	Culvert	L+SPK - - - - -	Lead and Spike
CB - - - - -	Curb	L+T - - - - -	Lead and Tack
CS MON - - - - -	County Engineer Monument	MCR - - - - -	Middle of Curb Return
CS BR CAP - - - - -	County Engineer Brass Cap	MKD - - - - -	Marked
CT SPK - - - - -	Cut Spike	MC - - - - -	Middle of Curve
DR - - - - -	Drive or Driveway	MON - - - - -	Monument
E/O - - - - -	East of	N/O - - - - -	North of
ECR - - - - -	End of Curb Return	NR - - - - -	Near

ABBREVIATIONS USED IN BENCH MARK LISTINGS . . . CONTINUED

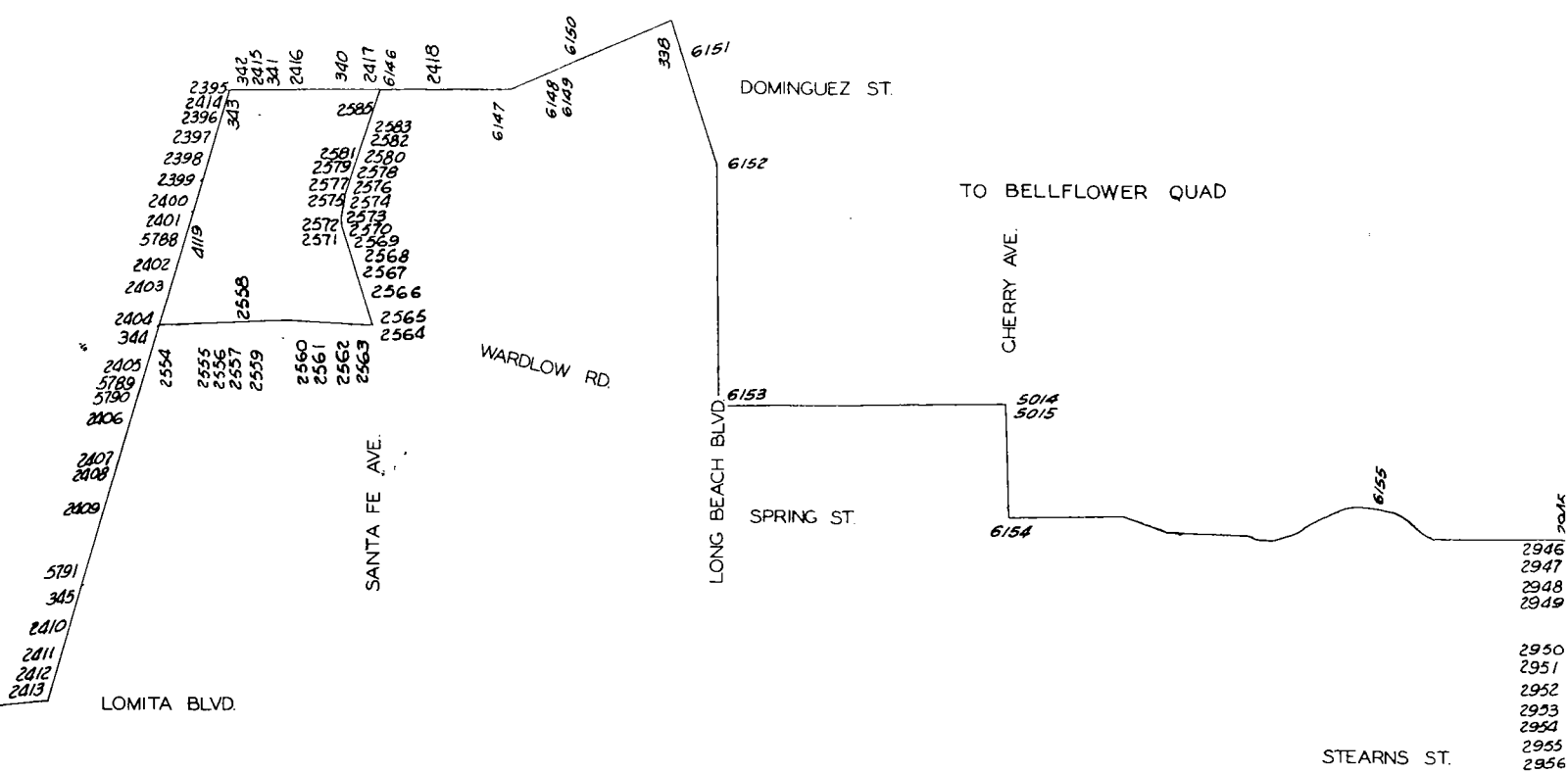
OPP - - - - - Opposite  
PI - - - - - Point of Intersection  
PK+W - - - - - PK Nail and Washer  
P/L - - - - - Property Line  
POST - - - - - Point on Semi-Tangent  
PP - - - - - Power Pole  
PVMT - - - - - Pavement  
PROD - - - - - Produced  
RD - - - - - Road  
RDEM - - - - - Road Dept. Bench Mark  
RR - - - - - Railroad  
RT - - - - - Right  
R/W - - - - - Right of Way  
SDMH - - - - - Storm Drain Manhole  
SMH - - - - - Sewer Manhole  
SPK - - - - - Spike  
ST+W - - - - - Spike Tin and Washer  
S/O - - - - - South of  
TP - - - - - Telephone Pole  
USC+GS - - - - - U. S. Coast and Geodetic Survey  
USGS - - - - - U. S. Geological Survey  
WK - - - - - Walk  
W/O - - - - - West of



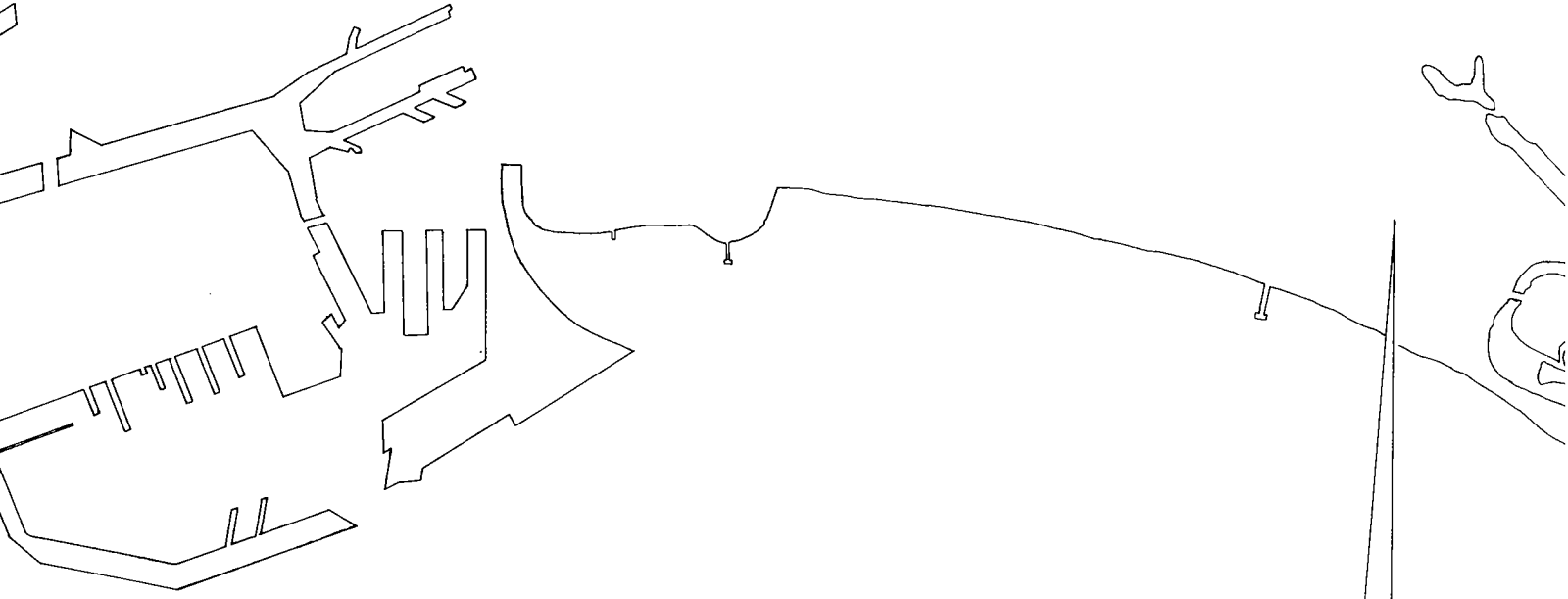
# LONG BEACH QUAD

LOS ANGELES COUNTY ROAD DEPARTMENT  
SURVEY SECTION FIELD ENGINEERING DIVISION

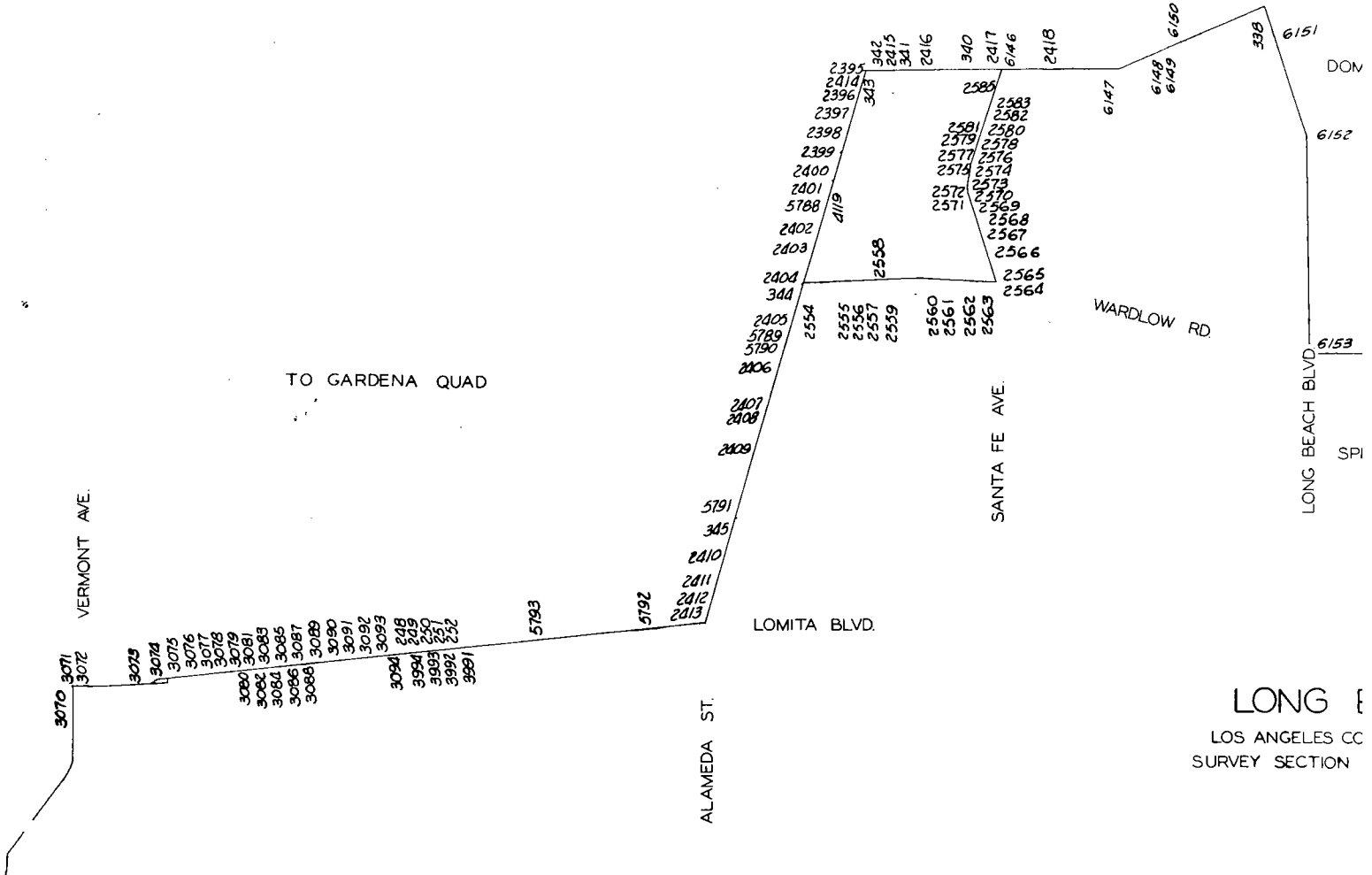
SCALE - 1 MILE



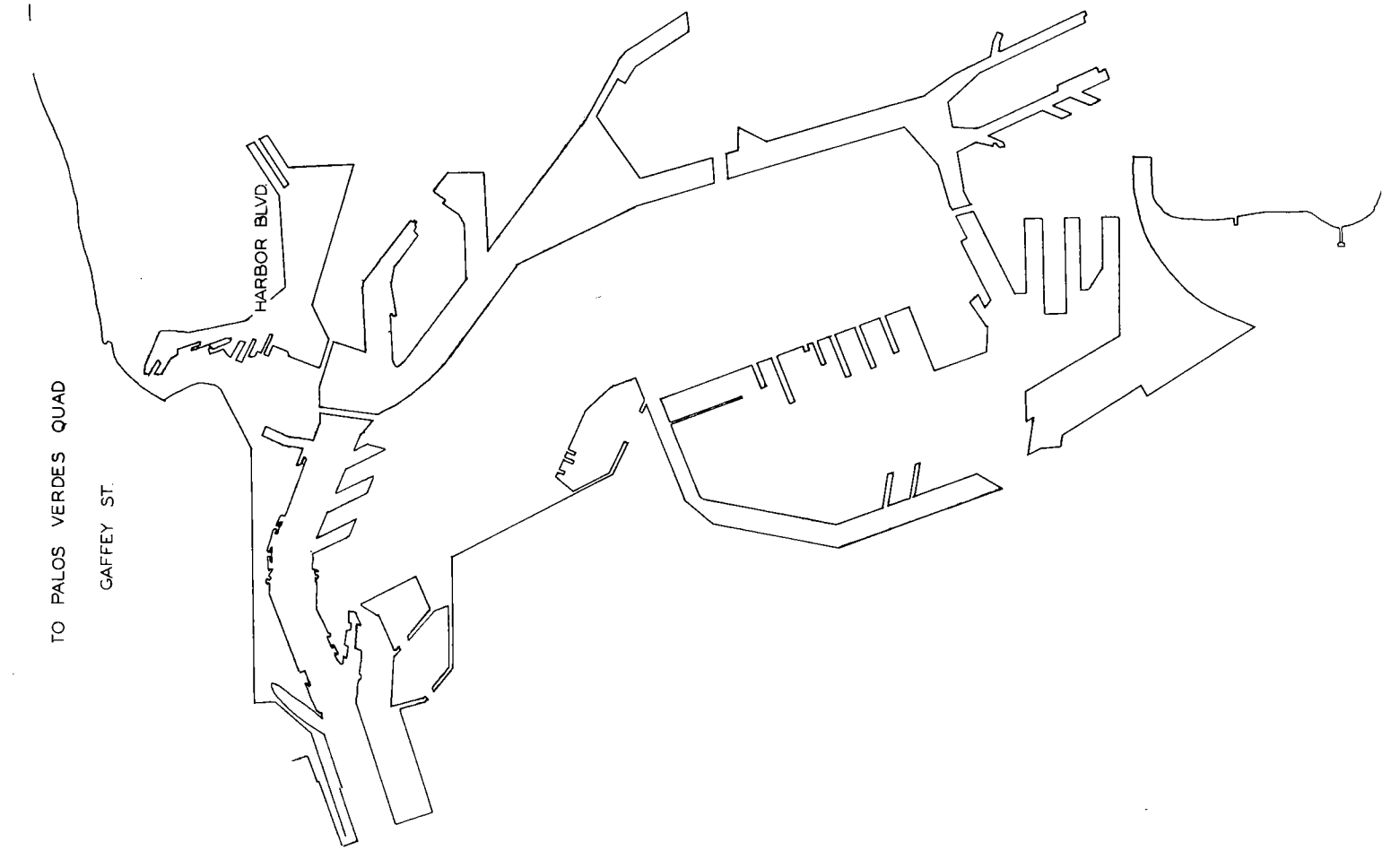
**LONG BEACH QUAD**  
 LOS ANGELES COUNTY ROAD DEPARTMENT  
 SURVEY SECTION FIELD ENGINEERING DIVISION



SCALE - 1 MILE



LONG E  
LOS ANGELES CC  
SURVEY SECTION



QUAD-YEAR	ELEV	DESCRIPTION (INCLUDE QUAD AND YEAR IN DESCRIPTION)	BM	NUMBER
LG BEACH (1955)	16.504	L+T S SIDE DRWY HSE NO 516 40FT± W C/L PALOS VERDE ST	SY	145
BASELINE (1955)	42.889	L+SPK 4FT± N BCR @ NW COR LAKME AVE + LOMITA BLVD E	SY	250A
BASELINE (1955)	19.167	FC MON CONC POST 75FT± N C/L SEPULVEDA BLVD W 28FT± W C/L ALAMEDA BLVD	SY	345
BASELINE (1955)	30.235	L+T W CB ALAMEDA ST C/L PROD HARRISON ST	SY	2396A
BASELINE (1955)	29.273	L+BN W CB ALAMEDA ST C/L PROD JACKSON ST	SY	2397A
BASELINE (1955)	28.474	L+BN W CB ALAMEDA ST C/L PROD MADISON ST	SY	2398A
BASELINE (1955)	27.599	L+BN W CB ALAMEDA ST C/L PROD ADAMS ST	SY	2399A
BASELINE (1955)	27.278	L+BN W CB 4FT± N OF END OF CB @ NW COR ALAMEDA ST + CARSON ST	SY	2400A
BASELINE (1955)	24.577	L+BN W CB ALAMEDA ST 22FT± W C/L 650FT± N C/L 223RD ST 206FT± N C/L SAN DIEGO FWY UNDERPASS	SY	2403A
BASELINE (1955)	22.627	L+BN W CB ALAMEDA ST 1126FT± S 223RD ST	SY	2405A
BASELINE (1955)	20.534	L+BN W CB ALAMEDA ST 22FT± W C/L 150FT± N PERR STA + 200FT± S DRWY TO PUBLIC DUMP NO 22746 ALAMEDA ST	SY	2406A
BASELINE (1955)	18.111	CSBM MON IN WELL 1FT± W OF W CB ALAMEDA ST 23FT± W C/L 34FT± N OF N END CONC BRIDGE OVER DOMINGUEZ CHANNEL 0.5MI± N SEPULVEDA BLVD MKD (BM 5-40A 1960 RE 5869)	SY	2407A
BASELINE (1955)	19.728	FC MON 4FT± E OF E CB ALAMEDA ST 44FT± E C/L @ SE COR BRIDGE NO 1113 OVER DOMINGUEZ CHANNEL 0.5MI± N SEPULVEDA BLVD MKD (111-93 1960)	SY	2408A
BASELINE (1955)	18.012	L+BN E CB ALAMEDA ST 40FT E C/L 450FT± S DRWY TO THE (HANCOCK CHEMICAL BLAT) 2FT± S PP NO 1108824E 0.3MI± N SEPULVEDA BLVD	SY	2409A
BASELINE (1955)	19.127	L+BN W CB ALAMEDA ST 22FT± W C/L 64FT± N PP NO 1353725E 1280FT± S SEPULVEDA BLVD	SY	2410A
BASELINE (1955)	36.447	RDBM MON 5IN DN 1FT± W OF W CB ALAMEDA ST 23FT± W C/L 13FT± N LAC BDRY 0.5MI± S SEPULVEDA BLVD MKD (BM NO 1)	SY	2411A
BASELINE (1955)	36.715	L+BN W CB ALAMEDA ST 22FT± W C/L 60FT± N CB END 59FT± S PP NO 1353742E 0.5MI± S SEPULVEDA BLVD	SY	2412A
BASELINE (1955)	36.807	L+SPK W CB ALAMEDA ST 22FT± W C/L 5FT± N OF END OF CB 12FT± N LAC BDRY 0.5MI± S SEPULVEDA BLVD	SY	2413A
BASELINE (1955)	32.116	L+T MCR @ SE COR ALAMEDA ST + DOMINGUEZ ST	SY	2414A
BASELINE (1955)	31.764	L+T S CB DOMINGUEZ ST 1FT± W DRWY HSE NO 2638 DOMINGUEZ ST	SY	2415A
BASELINE (1955)	32.405	L+T S CB DOMINGUEZ ST 25FT± W DRWY HSE NO 2738 DOMINGUEZ ST (FRONT FIRE PLUG)	SY	2416A



QUAD-YEAR	ELEV	D E S C R I P T I O N (INCLUDE QUAD AND YEAR IN DESCRIPTION)	BM	NUMBER
BASELINE (1955)	33.268	L+SPK W CB SANTA FE AVE 3FT# S CB RET @ SW COR DOMINGUEZ ST + SANTA FE AVE	SY	2417A
LG BEACH (1955)	24.838	L+BN E SIDE CONC SMH 725FT# E ALAMEDA ST + 15FT# N C/L 223RD ST (MIDWAY BETWEEN PP NO 279302E + PP 279303 N SIDE 223RD ST	SY	2554
LG BEACH (1955)	24.686	SPK E CB 1FT# S BCR @ SE COR 223RD ST + HESPERIAN AVE	SY	2555
LG BEACH (1955)	23.382	L+N N CB SERVICE RD 10FT# W BCR @ NE COR 223RD ST + SALMON AVE	SY	2556
LG BEACH (1955)	22.206	L+BN S CB 223RD ST SERVICE RD 2FT# W BCR @ SW COR SERVICE RD + MCHELEN AVE 50FT# N 223RD ST + 40FT# W C/L MCHELEN AVE	SY	2557
LG BEACH (1955)	19.906	L+T E CB 12FT# S BCR @ SE COR RIVER AVE + 223RD ST	SY	2558
LG BEACH (1955)	24.676	L+T E CB 11FT# W BCR @ SE COR WEBSTER AVE + 223RD ST 35FT# S C/L 223RD ST	SY	2559
LG BEACH (1955)	29.813	L+T NW COR CONC BASE WIG WAG 22FT# S C/L 223RD ST 10FT# S OF W RAIL UPRR	SY	2560
LG BEACH (1955)	29.887	L+BN NE COR OF E CONC SLAB OF CULV BRIDGE UPRR 50FT# N C/L 223RD ST 2FT# E OF E RAIL UPRR	SY	2561
LG BEACH (1955)	25.587	L+T E CB 10FT# S BCR @ SE COR SEABRIGHT AVE + 223RD ST 38FT# S C/L 223RD ST	SY	2562
LG BEACH (1955)	26.747	L+BN 2FT# S OF N END OF HDWL TO CULV 35FT# N C/L 223RD ST TO THE W + 80FT# W C/L SANTA FE AVE	SY	2563
LG BEACH (1955)	25.724	R D MON @ C/L INT 223RD ST TO THE E + SANTA FE AVE	SY	2564
LG BEACH (1955)	26.203	L+T E CB 10FT# N BCR @ NE COR SANTA FE AVE + 223RD ST (IN CB OVER N EDGE OF ENT TO CULV	SY	2565
LG BEACH (1955)	27.309	L+BN W CB SANTA FE AVE 2FT# N OF END OF CB 500FT# N 223RD ST + 400FT# S OF UPRR OVERPASS	SY	2566
LG BEACH (1955)	12.067	L+T NR S END OF CONC ABUT UPRR BRIDGE OVER SANTA FE AVE ON C/L SANTE FE AVE	SY	2567
LG BEACH (1955)	12.050	L+T NR N END OF CONC ABUT OF UPRR BRIDGE OVER SANTA FE AVE ON C/L SANTA FE AVE	SY	2568
LG BEACH (1955)	27.332	L+T CONC WK E SIDE OF SANTE FE AVE 2FT# E OF CB 33FT N OF END OF WK 600FT# N 223RD ST 400FT# S C/L RR OVERPASS	SY	2569
LG BEACH (1955)	26.837	L+T E CB SANTA FE AVE 1FT# S END OF CB 285FT# S C/L PROD 218TH PL	SY	2570
LG BEACH (1955)	26.846	L+T W CB SANTA FE AVE 1FT# S ANG PT OF CB 285FT# S C/L 218TH PL 228FT# S BCR	SY	2571
LG BEACH (1955)	27.099	L+BN W CB 2FT# S BCR @ SW COR 218TH PL + SANTA FE AVE	SY	2572
LG BEACH (1955)	27.462	L+BN N CB 1FT# W BCR @ NW COR 218TH PL + SANTA FE AVE	SY	2573
LG BEACH (1955)	27.667	L+T CB MOBILGAS SERVICE STA 1FT# S BCR @ SW COR SANTA FE AVE + CARSON ST	SY	2574

QUAD-YEAR	ELEV	DESCRIPTION (INCLUDE QUAD AND YEAR IN DESCRIPTION)	BM NUMBER
LG BEACH (1955)	29.449	L+T E CB TRAFFIC ISLAND @ SW COR CARSON ST + SANTA FE AVE 8FT# S BCR	SY 2575
LG BEACH (1955)	28.768	CS MON @ C/L INT CARSON ST + SANTA FE AVE	SY 2576
LG BEACH (1955)	29.396	L+T S CB 8FT# W BCR @ SW COR SANTA FE AVE + WASHINGTON ST	SY 2577
LG BEACH (1955)	29.579	L+T S CB 5FT# W BCR @ SW COR SANTA FE AVE + ADAMS ST	SY 2578
LG BEACH (1955)	29.877	L+T N CB 15FT# W BCR @ NW COR JEFFERSON ST + SANTA FE AVE	SY 2579
LG BEACH (1955)	30.386	L+T S CB 6FT# W BCR @ SW COR MADISON ST + SANTA FE AVE	SY 2580
LG BEACH (1955)	30.895	L+T N CB 10FT# W BCR @ NW COR MONROE ST + SANTA FE AVE	SY 2581
LG BEACH (1955)	30.950	L+SPK W CB 5FT# N BCR @ NW COR SANTA FE AVE + JACKSON ST MKD (D 21)	SY 2582
LG BEACH (1955)	31.514	L+SPK W CB 5FT# N BCR @ NW COR VAN BUREN ST + SANTA FE AVE MKD (D 20)	SY 2583
LG BEACH (1955)	32.789	L+SPK W CB @ NW COR TYLER ST + SANTA FE AVE MKD (D 18)	SY 2585
LG BEACH (1955)	16.772	L+BN E CB 1FT# S BCR @ SE COR PALO VERDE AVE + DON JULIO ST	SY 2923
LG BEACH (1955)	16.212	L+BN E CB 6FT# S BCR @ SE COR BARBANELLA ST + PALO VERDE AVE	SY 2926
LG BEACH (1955)	18.163	L+BN E CB 1FT# S BCR @ SE COR ALLEY N OF HSE NO 2756 PALO VERDE AVE + PALO VERDE AVE	SY 2927
LG BEACH (1955)	19.909	L+BN E CB 1FT S BCR @ SE COR BELEN ST + PALO VERDE AVE	SY 2928
BASELINE (1955)	22.488	L+BN S CB SPRING ST 1FT# E CB RET @ SE COR SPRING ST + PALO VERDE AVE	SY 2930A
BASELINE (1955)	21.800	CS MON (BR SPK IN CONC) @ INT PALO VERDE AVE + SPRING ST 18IN DN	SY 2931A
BASELINE (1955)	22.204	L+BN S CB ADDERLEY DR 13FT W DRWY HSE NO 5844	SY 2936
BASELINE (1955)	21.382	CS MON 8FT# S C/L SPRING ST (N SERVICE RD) 15FT# E C/L LOMINA AVE PROD	SY 2940
BASELINE (1955)	22.931	L+N S CB SPRING ST (N SERVICE RD) C/L LOMINA AVE PROD	SY 2941
BASELINE (1955)	22.197	L+N CTR CB RET S END PARKWAY OF SAN ANSELINA AVE + SPRING ST SERVICE RD	SY 2942A
BASELINE (1955)	23.054	L+N S CB SPRING ST N SERVICE RD + CHATWIN AVE PROD	SY 2943
BASELINE (1955)	22.677	L+BN N CB SPRING ST 1FT# E CB RET @ NE COR SPRING ST + BELLFLOWER BLVD	SY 2944
BASELINE (1955)	22.109	L+BN N CB SPRING ST 1FT# W CB RET @ NW COR SPRING ST + BELLFLOWER BLVD	SY 2945

QUAD-YEAR	ELEV	DESCRIPTION (INCLUDE QUAD AND YEAR IN DESCRIPTION)	BM NUMBER
BASELINE (1955)	21.755	CS MON INT SPRING ST + BELLFLOWER BLVD N EDGE	SY 2946
LG BEACH (1955)	21.575	L+T W CB 3FT± N BCR @ NW COR BELLFLOWER BLVD + 29TH ST	SY 2947
LG BEACH (1955)	20.805	L+BN W CB 1FT± N BCR @ NW COR 28TH ST + BELLFLOWER BLVD	SY 2948
LG BEACH (1955)	20.702	L+N W CB 2FT± S BCR @ SW COR 28TH ST + BELLFLOWER BLVD	SY 2949
LG BEACH (1955)	17.586	L+BN W CB 1FT± N BCR @ NW COR 23RD ST + BELLFLOWER BLVD	SY 2953
LG BEACH (1955)	17.440	L+BN W CB 1FT± S BCR @ SW COR 23RD ST + BELLFLOWER BLVD	SY 2954
LG BEACH (1955)	16.737	L+BN W CB 1FT N BCR @ NW COR 1ST ALLEY N STEARNS ST + BELLFLOWER BLVD	SY 2955
LG BEACH (1955)	16.415	L+BR CTR CB RET @ NW COR STEARNS ST + BELLFLOWER BLVD	SY 2956
LG BEACH (1955)	16.434	L+BN S CB 1FT± E BCR @ SE COR STEARNS ST + BELLFLOWER BLVD	SY 2957
LG BEACH (1955)	15.773	L+BN S CB 1FT± W BCR @ SW COR STEARNS ST + 1ST ST W OF SAN ANSELINA AVE	SY 2958
LG BEACH (1955)	15.298	L+N CTR CB RET @ SW COR SAN ANSELINA AVE + STEARNS ST	SY 2959
LG BEACH (1955)	15.842	L+N CTR CB RET @ SE COR LOMINA AVE + STEARNS ST	SY 2960
LG BEACH (1955)	16.198	L+N CTR CT RET @ SE COR LOMINA AVE + STEARNS ST	SY 2961
LG BEACH (1955)	15.908	L+N CTR CB RET @ SE COR RADNOR AVE + STEARNS ST	SY 2962
LG BEACH (1955)	16.339	L+N CTR CB RET @ SE COR ALBURY AVE + STEARNS ST	SY 2963
LG BEACH (1955)	16.575	L+T CTR CB RET @ SE COR SAN VICENTE AVE + STEARNS ST	SY 2964
LG BEACH (1955)	15.530	L+N CTR CB RET @ SE COR FANWOOD AVE + STEARNS ST	SY 2965
LG BEACH (1955)	14.961	L+T S CB 1FT± E BCR @ SE COR FAUST AVE + STEARNS ST	SY 2966
LG BEACH (1955)	14.681	L+T S CB 1FT± E BCR @ SE COR STEARNS ST + SENASAC AVE	SY 2967
LG BEACH (1955)	14.345	L+T S CB 1FT± E BCR @ SE COR GONDAR AVE + STEARNS ST	SY 2968
LG BEACH (1955)	14.084	L+T S CB 1FT± E BCR @ SE COR MCNAB AVE + STEARNS ST	SY 2969
LG BEACH (1955)	14.891	CHIS X E EDGE MH RIM 200FT± N C/L STEARNS ST + 20FT± W C/L PALO VERDE AVE	SY 2971
LG BEACH (1955)	15.665	L+BN E CB 1FT± S BCR @ SE COR PALO VERDE AVE + CANTEL ST	SY 2972

QUAD-YEAR	ELEV	DESCRIPTION (INCLUDE QUAD AND YEAR IN DESCRIPTION)	BM NUMBER
LG BEACH (1955)	16.089	L+BN E CB 15FT S C/L PROD BELICE ST	SY 2973
LG BEACH (1955)	16.325	L+BN W CB E SERVICE RD PALO VERDE AVE 15FT# S C/L PROD LOS ARCOS ST	SY 2974
BASELINE (1955)	35.969	L+SPK N CB LOMITA BLVD 5FT# W CB RET @ NW COR LOMITA BLVD + VERMONT AVE	SY 3070A
BASELINE (1955)	33.103	SQ HD SPK NR CTR CB RET NE COR LOMITA BLVD + VERMONT AVE	SY 3071A
BASELINE (1955)	32.957	BR CAP IN WELL @ C/L INT LOMITA BLVD + VERMONT AVE MKD (1ST ORDER SURVEY MARK - BUREAU OF ENG DIV OF SURVEYS - DEPT OF PUBLIC WORKS 1955, WILMINGTON B-1)	SY 3072A
BASELINE (1955)	35.514	CS MON IN WELL ON C/L FIGUEROA ST 20FT N C/L LOMITA BLVD (TO E)	SY 3074A
BASELINE (1955)	34.455	L+T E CB FIGUEROA ST 140FT# S C/L LOMITA BLVD TO THE E	SY 3075A
BASELINE (1955)	37.466	LACE MON @ C/L INT LOMITA BLVD + EUDORA AVE	SY 3076A
BASELINE (1955)	36.920	L+SPK E CB 3FT# S OF END OF CB 30FT# S C/L LOMITA BLVD @ SE COR LOMITA BLVD + EUDORA AVE	SY 3077A
BASELINE (1955)	30.523	L+T E CB 4FT# S OF END OF CB 30FT# S C/L LOMITA BLVD @ SE COR LOMITA BLVD + VAN TRESS AVE	SY 3078A
BASELINE (1955)	36.912	LACE MON @ C/L INT LOMITA BLVD + FRIGATE AVE	SY 3079A
BASELINE (1955)	40.752	SQ HD SPK W CB 15FT# S OF END OF CB 35FT# S C/L LOMITA BLVD @ SW COR WILMINGTON BLVD (MAIN ST TO THE N) + LOMITA BLVD	SY 3080A
BASELINE (1955)	39.933	LACE MON @ C/L INT WILMINGTON BLVD (MAIN ST TO THE N) + LOMITA BLVD	SY 3081A
BASELINE (1955)	41.075	LACE MON @ C/L INT LOMITA BLVD + GULF AVE	SY 3083A
BASELINE (1955)	41.882	L+T W CB GULF AVE 75FT# S OF CONC DRWY TO HSE NO 1753 LOMITA BLVD 1FT#	SY 3084A
BASELINE (1955)	42.222	L+SPK W CB 5FT# S BCR @ SW COR BAY VIEW AVE + LOMITA BLVD 70FT# S LOMITA BLVD	SY 3085A
BASELINE (1955)	42.199	L+T E CB 70FT# S C/L LOMITA BLVD 7FT# N OF N EDGE OF DRWY TO HSE NO 1752 BAY VIEW AVE FRONT PP NO 54425E	SY 3086A
BASELINE (1955)	43.003	WIRE SPK W CB 33FT# S C/L LOMITA BLVD 3FT# S OF END OF CB @ SW COR NEPTUNE AVE + LOMITA BLVD	SY 3088A
BASELINE (1955)	42.555	WIRE SPK W CB 33FT# S C/L LOMITA BLVD 3FT# S OF END OF CB @ SW COR RAVENNA AVE + LOMITA BLVD	SY 3089A
BASELINE (1955)	42.404	L+SPK W CB 35FT# S C/L LOMITA BLVD 3FT# S OF END OF CB @ SW COR OF LAGOON AVE + LOMITA BLVD	SY 3090A
BASELINE (1955)	41.691	LACE MON C/L INT ISLAND AVE + LOMITA BLVD	SY 3091A
BASELINE (1955)	42.857	LACE MON C/L INT MARINE AVE + LOMITA BLVD	SY 3092A

QUAD-YEAR	ELEV	DESCRIPTION (INCLUDE QUAD AND YEAR IN DESCRIPTION)	BM NUMBER
BASELINE (1955)	42.810	L+SPK W CB MARINE AVE 34FT# S C/L LOMITA BLVD 4FT# S OF END OF CB	SY 3093A
BASELINE (1955)	43.805	LACE MON @ C/L INT AVALON BLVD + LOMITA BLVD	SY 3094A
BASELINE (1955)	40.137	R D BR CAP 12IN DN IN WELL @ C/L INT WILMINGTON AVE + LOMITA BLVD	SY 3991A
BASELINE (1955)	31.299	USC+GS MON 2FT# ABOVE GROUND IN W SIDE OF DOMINGUEZ WATER CO BLDG 46FT# E C/L ALAMEDA ST 100FT S C/L CARSON ST MKD (D 167 1933)	SY 4119A
BASELINE (1955)	53.925	CITY OF LONG BEACH MON IN WELL 8IN DN ON NW COR CHERRY AVE + WARDLOW RD 5FT# N OF N CB + 45FT# W OF W CB MKD (BM 93)	SY 5014A
BASELINE (1955)	58.662	BR DISC VERTICAL IN NE COR WALL OF LONG BEACH WATER DEPT PUMP HSE SW COR CHERRY AVE + WARDLOW RD 70FT# S + 219FT# W C/L INT	SY 5015A
BASELINE (1955)	26.529	R D MON 6IN DN ALAMEDA ST 27FT W C/L + 225FT S C/L CARSON ST MKD (BM 7)	SY 5788
BASELINE (1955)	21.788	R D MON 4IN DN 3FT# W OF W CB ALAMEDA ST 25FT# W C/L 1070FT# S 223RD ST 30FT S PP NO 444418E MKD (BM 6)	SY 5789
BASELINE (1955)	21.954	R D MON 6IN DN 3FT W OF W CB ALAMEDA ST 25FT# W C/L 13FT S GP NO 444419 1145FT S 223RD ST MKD (BM 5)	SY 5790
BASELINE (1955)	16.632	R D MON W CB ALAMEDA ST 35FT W C/L 281FT# N C/L SEPULVEDA BLVD 45FT# S CATCH BASIN MKD (Y 3)	SY 5791
BASELINE (1955)	37.041	CS MON IN CONC POST 2IN UP LAC BOUNDARY LINE 80FT# S SPUR TRACK TO TANK FARM 600FT# W ALAMEDA ST 3.5MI# S SEPULVEDA BLVD MKD (CO SUR RE 5869 LA CO-LA CITY)	SY 5792
BASELINE (1955)	41.612	L+BN CONC BASE CHAIN LINK FENCE POST @ GATE TO SPUR TRACK INTO (ETHYL CORT) YD 50FT# N TRACK 86FT# N C/L DIRT ROAD (LOMITA BLVD) 90FT# W CONC ENT ROAD 3.4MI# E WILMINGTON AVE	SY 5793
BASELINE (1955)	31.942	CS MON 10IN DN 14FT# S + 72FT# W C/L INT DOMINGUEZ ST + SANTA FE AVE MKD (BM 8-57 RE 63)	SY 6146
BASELINE (1955)	54.269	BT SPK IN CONC ABUT OF UPRR + PERR CROSSING OVER LONG BEACH FREEWAY NR DOMINGUEZ ST 18FT# W OF W RAIL PERR + 8FT# N OF N RAIL UPRR	SY 6147
BASELINE (1955)	57.509	CS BR DISK CTR S HDWL W CONC ABUT UPRR BRIDGE OVER LA RIVER @ MILE POST 17.13 10FT# E /F W END HDWL MKD (BM 8-54B 1960)	SY 6148
BASELINE (1955)	57.552	CHIS SQ TOP NE COR CONC ABUT 9FT# N OF N RAIL UPRR @ W END BRIDGE OVER LA RIVER @ MILE POST 17.13	SY 6149
BASELINE (1955)	57.633	CS BR DISK CTR N HDWL E CONC ABUT 6FT# E UPRR BRIDGE OVER LA RIV @ MILE POST 17.13 MKD (BM 8-54B 1960)	SY 6150
BASELINE (1955)	44.407	USC + GS DISK 3FT# ABOVE GROUND IN E FACE OF W CONC ABUT UPRR BRIDGE OVER LONG BEACH BLVD 1FT# S OF N END ABUT + 49FT# S /F S CB 48TH ST + 14FT# W OF W CB LONG BEACH BLVD MKD (Z-799 1946)	SY 6151

QUAD-YEAR	ELEV	DESCRIPTION (INCLUDE QUAD AND YEAR IN DESCRIPTION)	BM NUMBER
BASELINE (1955)	102.987	4IN BR TABLET IN WELL 18FT# N OF S CB LINE PROD SAN ANTONIO DR + 33FT# E OF W CB LINE PROD LONG BEACH BLVD MKD (LA COUNTY SURVEY CONTROL SYSTEM TRAVERSE STATION CLEARWATER B-8A RE 2177)	SY 6152
BASELINE (1955)	88.489	4IN BR TABLET IN WELL 40FT# E OF W CB PROD LONG BEACH BLVD + 31FT# S OF N CB PROD WARDLOW RD MKD (LA COUNTY SURVEY CONTROL SYSTEM TRAVERSE STATION CLEARWATER B-10 RE 2177)	SY 6153
BASELINE (1955)	24.651	LONG BEACH CITY ENG MON IN WELL IN LEFT TURN LANE OF N BARREL SPRING ST 8FT# N OF N CB + 16FT# E OF W END CTR ISLAND @ INT OF LAKEWOOD BLVD + SPRING ST MKD (CITY ENGINEER MONUMENT)	SY 6155
BASELINE (1955)	22.748	L+BRAD IN CHIS SQ N CB 4FT# W BCR @ NW COR SPRING ST + WOODRUFF AVE 45FT# N + 78FT# W C/L INT	SY 6156
BASELINE (1955)	23.327	L+BRAD E CB 1FT# N BCR @ NE COR SPRING ST + WOODRUFF AVE 40FT#E + 54FT#N C/L INT	SY 6157
BASELINE (1955)	21.988	L+BRAD IN CHIS SQ W CB 6FT# S BCR @ SW COR SPRING ST + SNOWDEN AVE 100FT# S + 18FT# W C/L INT	SY 6158
BASELINE (1955)	23.396	RDBM TAG S CB 1FT# E BCR @ SE COR SPRING ST + SNOWDEN AVE 45FT# S + 48FT# E C/L INT	SY 6159
BASELINE (1955)	19.908	CS MON 10IN DN 74FT# S C/L SPRING ST + 114FT# W C/L STUDEBAKER RD MKD (BM 8-33 1951 RE 63)	SY 6160
BASELINE (1955)	22.311	USC+GS DISK IN TOP CONC POST 19FT# W OF FENCE AROUND PUMP STATION @ LONG BEACH WATER DEPT WISE WELL NO 1 4FT# N PP NO 444799E 2FT# E OF BOUNDARY FENCE + 16FT# S OF WITNESS POST + 110FT# S C/L SPRING ST NR STUDEBAKER RD MKD (A779 1946)	SY 6161
BASELINE (1955)	29.028	USC+BS BR DISK IN SE COR CONC BLOCK FOR MANHOLE 84FT# W OF W END BRIDGE NO B96C + 60FT# N C/L SPRING ST ON SPRING ST @ SAN GABRIEL RIV MKD (J-51 RESET 1952)	SY 6162
BASELINE (1955)	37.787	CS CONTROL SYSTEM TRAVERSE MON 14IN DN 2FT# S OF S CB + 15FT# W OF W END BRIDGE NO B96C ON SPRING ST @ SAN GABRIEL RIV MKD (ARTESIA B-11, 1954)	SY 6163
BASELINE (1955)	39.512	CS CONTROL SYSTEM REFERENCE MARK IN TOP CONC ABUT 3FT# S CB @ SE COR BRIDGE NO B96C ON SPRING ST @ SAN GABRIEL RIV MKD (ARTESIA B-11 RM NO 1 1954)	SY 6165