

COUNTY OF LOS ANGELES
ROAD DEPARTMENT

PRECISE
BENCH MARK LIST



SANTA FE QUAD
1960 ADJUSTMENT

PREFACE

The Road Department level net is composed of more than 1,000 miles of levels supporting in excess of 10,000 bench marks. In 1964-65, a major readjustment of the net was undertaken. To emphasize the complete break with previous elevations, the SY, SG & SL series bench marks have been re-labeled BY, BG & BL, respectively.

To facilitate the adjustment, indexing, and distribution of adjusted values of the net, the County territory was divided into 31 quads or areas. For identification purposes each quad was given a name, viz., "Rosemead," "La Mirada," "Santa Fe," etc. When bench marks and elevations in the Road Department net are used, the name of the quad in which the bench mark is located and the date of the adjustment of the elevation must be included in the bench mark description, e.g.,

BG 1887 --L+BN IN CONC HDWL OF DRAIN PIPE UNDER DR 218 FT
NE +18 FT SE C/L INT SAN JOSE HILLS RD +CAMERON AVE MKD (BM)
(COVINA --1965) ELEV. 696.238

It is expected that this general adjustment will, for the most part, remain sound for the next 8 to 12 years. As new circuits are completed, however, re-adjustment of individual quads may become advisable. It is expected that these subsequent adjustments will be in the nature of a few hundredths of a foot. When a quad is re-adjusted, new elevation lists will be published and the date of the re-adjustment will replace the "1965" at the end of the bench mark description. Two bench marks in the same quad with different adjustment dates will not normally join each other. Since all adjustments taper out to nothing at the periphery of the quad, any bench mark in one quad will join any bench mark in another quad regardless of their respective adjustment dates.

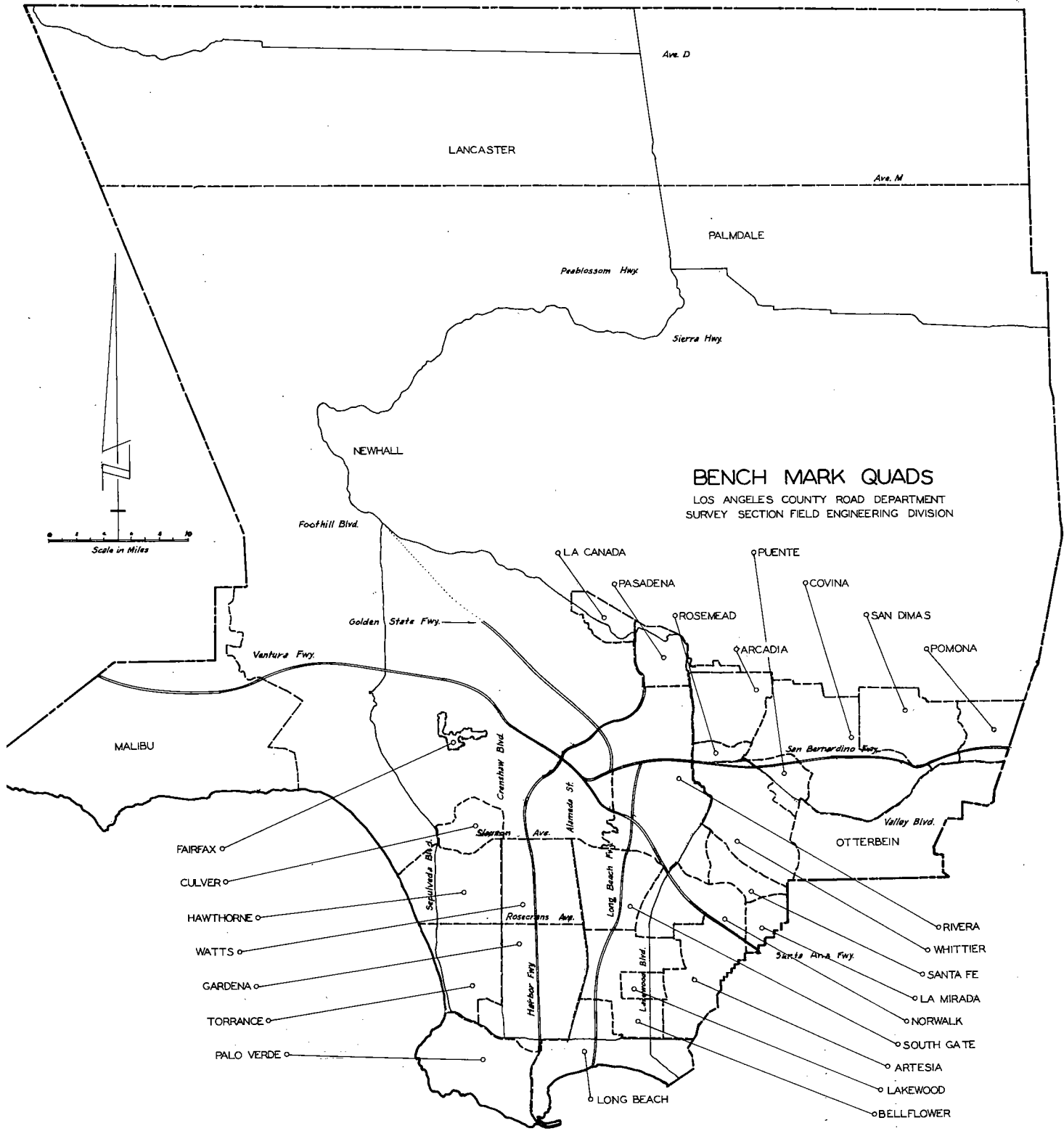
The basic accuracy of the net is reflected by an indicated field probable error of plus or minus 0.012 foot per mile of leveling as determined from 298 conditions of closure. However, many years experience in vertical control in the greater Los Angeles basin and Antelope Valley indicate that because of varying degrees of subsidence and heaving, the true datum is recovered only by obtaining substantial agreement of a number of bench marks.

The users of this net are invited to assist in its maintenance by notifying this Department of cases of obliteration, apparent mistakes in descriptions or elevations, and proven disturbance of bench marks.

DATUM: U. S. Coast and Geodetic Survey Sea Level Datum
of 1929, through the medium of the Los Angeles
County Engineer Precise Level Net, 1963 Adjust-
ment.

Abbreviations Used in Bench Mark Listings

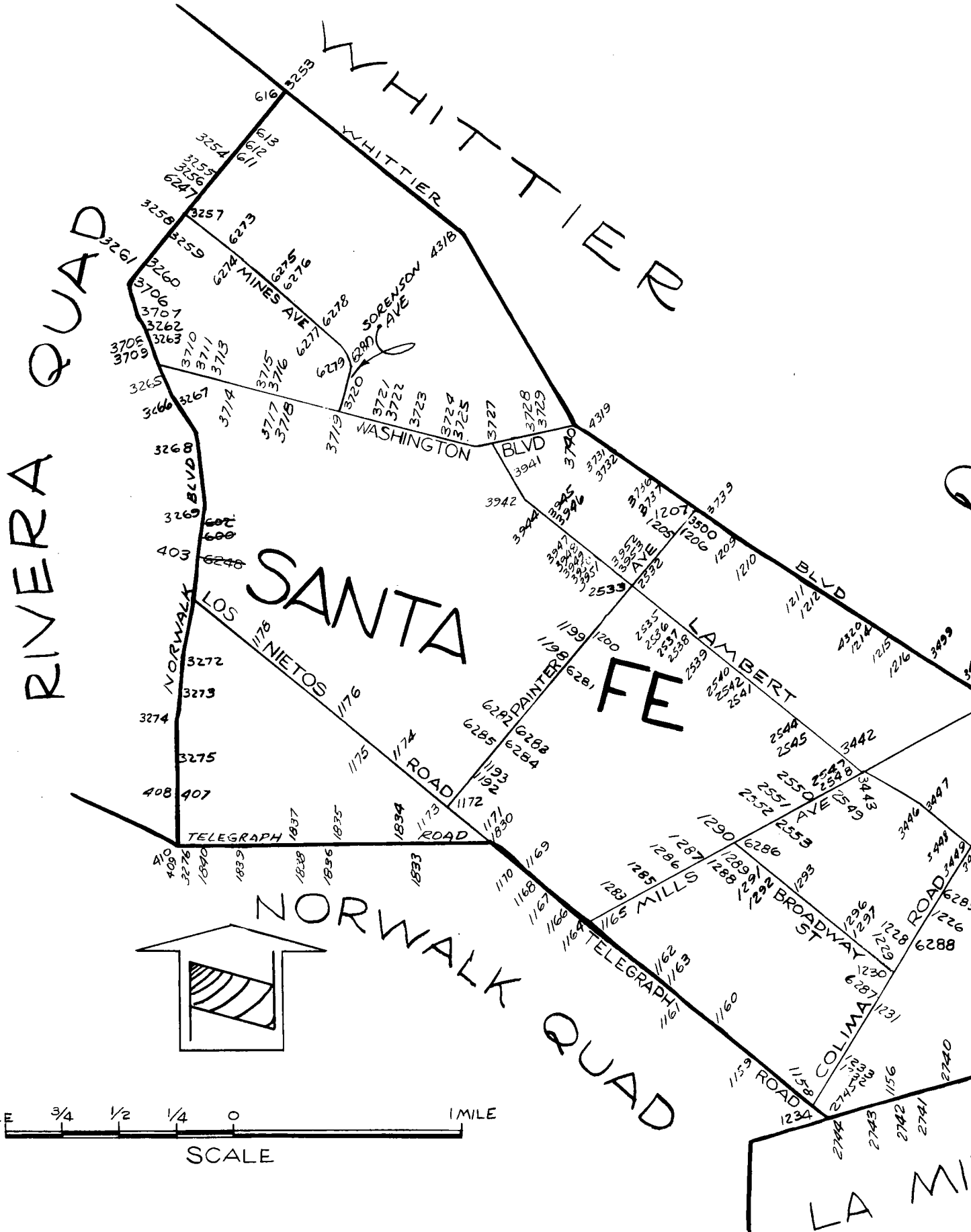
ABUT--Abutment	L+BN--Lead and Bench Mark Nail
ANG PT--Angle Point	L+BR--Lead and Brad
BC--Beginning of Curve	L+N--Lead and Nail
BCR--Beginning of Curb Return	L+PK--Lead and PK Nail
BLDG--Building	L+SPK--Lead and Spike
BT SPK--Boat or Bolt Spike	L+T--Lead and Tack
CB RET--Curb Return	MCR--Middle of Curb Return
C/L INT--Center Line Intersection	MKD--Marked
C/L PROD--Center Line Produced	NR--Near
COE--Corps of Engineers	OPP--Opposite
CONC--Concrete	PI--Point of Intersection
CS MON--County Surveyor Monument	PK+W--PK Nail and Washer
CS BR CAP--County Surveyor Brass Cap Monument	P/L--Property Line
CT SPK--Cut Spike	P O S T--Point on Semi-tangent
CTR--Center	PP--Power Pole
DN--Down	PVMT--Pavement
DR--Driveway	R D--Road Department
EC--End of Curve	RDEM--Road Department Bench Mark
ENT--Entrance	RR--Railroad
FC--Flood Control (Dept. LA County)	SPK T+W--Spike, Tin and Washer
FTG--Footing	USC+GS--United States Coast and Geodetic Survey
HDWL--Headwall	USGS--United States Geological Survey
HSE--House	WK--Walk
IP--Iron Pipe	±--Plus or Minus
LACE--Los Angeles City Engineer	+--And



RIVERA QUAD

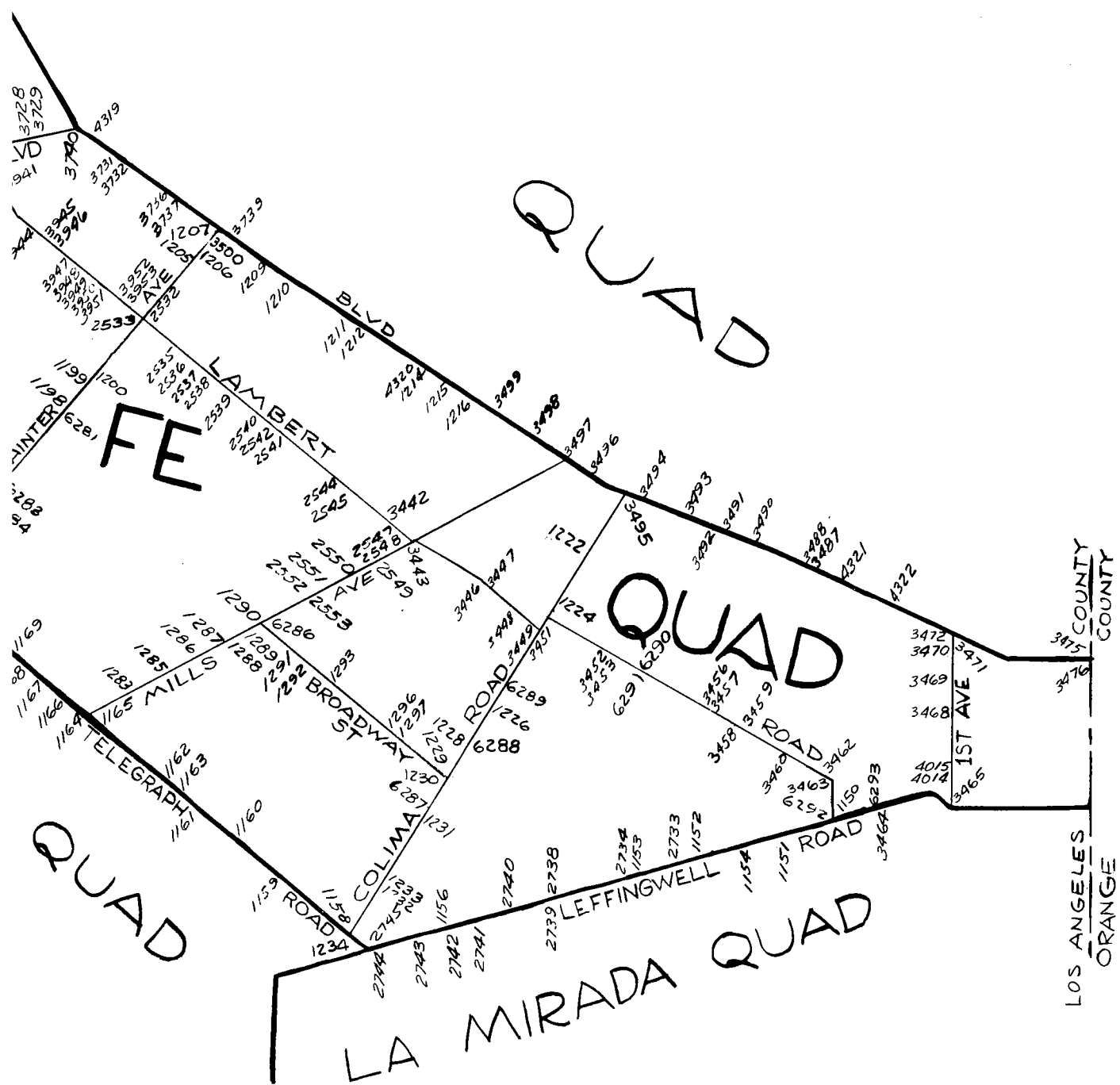
SANTA FE

NORWALK QUAD



LA MI

THE R



JUL 1964

LOS ANGELES COUNTY ROAD DEPARTMENT
SURVEY SECTION FIELD ENGINEERING DIVISION

PAGE 1

QUAD-YEAR	ELEV	DESCRIPTION (INCLUDE QUAD AND YEAR IN DESCRIPTION)	BM NUMBER
BASELINE (1955)	153.046	CUT SPK W CB NORWALK BLVD 20FT W C/L + 48FT N OF N RAIL PERR TRACKS	SY 403B
BASELINE (1955)	143.270	CUT SPK N END CULV HDWL 16FT E C/L NORWALK BLVD + 720FT N C/L TELEGRAPH RD	SY 407A
BASELINE (1955)	143.193	CUT SPK S END CULV HDWL 15FT W C/L NORWALK BLVD + 900FT N TELEGRAPH RD	SY 408A
BASELINE (1955)	142.433	CUT SPK NW END CONC ISLAND @ SW COR ANAHEIM-TELEGRAPH RD + NORWALK BLVD	SY 409A
BASELINE (1955)	140.867	CS MON @ INT NORWALK BLVD + ANAHEIM-TELEGRAPH RD	SY 410
BASELINE (1955)	153.299	L+T E CB NORWALK BLVD 20FT E C/L + 15FT S C/L PROD PERKINS AVE	SY 600B
BASELINE (1955)	152.589	L+N N CB 4FT E BCR @ NE COR NORWALK BLVD + WALNUT ST 15FT N + 50FT E C/L INT	SY 602A
BASELINE (1955)	169.992	L+SPK CTR OF WK 3FT E FLAGPOLE @ WEST WHITTIER SCHOOL 51FT W C/L NORWALK BLVD + 250FT N C/L BEXLEY DR	SY 611
BASELINE (1955)	169.853	L+T N CB 18FT N C/L LOCH LOMOND DR + 60FT E C/L NORWALK BLVD	SY 612A
BASELINE (1955)	170.153	L+T W CB 3FT N BCR @ NW COR LOCH AVON DR TO THE W + NORWALK BLVD 28FT W + 42FT N C/L INT	SY 613A
BASELINE (1955)	177.544	CHIS (X) S CB 1FT W BCR @ SW COR NORWALK BLVD + WHITTIER BLVD 28FT S + 32FT W C/L INT	SY 616
BASELINE (1955)	241.540	L+BN IN CB 36FT E BCR @ NE COR LEFFINGWELL RD + SANTA GERTRUDES AVE 40FT N + 145FT E C/L INT 1FT E ENT CATCH BASIN	SY 1150B
BASELINE (1955)	234.727	L+BN IN CB 40FT S C/L LEFFINGWELL RD + 36 FT E C/L PROD EL ARCO DR OPP PP NO 1173876E	SY 1151B
BASELINE (1955)	219.552	L+BN S CB LEFFINGWELL RD FRONT OF HSE NO 15356 25FT W C/L PROD LA CIMA DR + 250FT W SCOTT AVE	SY 1152B
BASELINE (1955)	224.861	CS MON 13FT E + 3FT S C/L INT STAMY RD + LEFFINGWELL RD	SY 1153A
BASELINE (1955)	228.755	CS MON IN WELL 12IN DN IN PKWY 14FT S C/L LEFFINGWELL RD + 619FT E C/L SCOTT AVE MKD (RM 2 LA HABRA A 9 1950)	SY 1154B
BASELINE (1955)	212.692	CS MON IN WELL 13FT N C/L LEFFINGWELL RD 100FT W HSE NO 14701 + CPP PP NO 662000E MKD (WHITTIER J 9 AUX 1 1960)	SY 1156A
BASELINE (1955)	188.898	L+T 10FT± S BCR @ NW COR TELEGRAPH RD + COLIMA RD 64FT± N + 21FT± W C/L INT	SY 1158A
BASELINE (1955)	195.476	CS TRI MON IN WELL 12IN DN @ OR NR C/L INT TELEGRAPH RD + VALLEY VIEW AVE (N) MKD (WHITTIER 1-9 AUX 1 1960)	SY 1159A ^B
BASELINE (1955)	175.619	L+SPK N BCR @ NE COR TELEGRAPH RD + CERES ST 61FT± N + 20FT± E C/L INT MKD (WZ 399)	SY 1160A ^B
BASELINE (1955)	167.625	L+N CTR RET PKWY TO HUGHSTON MEADOWS INN 45FT± S C/L TELEGRAPH RD (NO 1440)	SY 1161A
BASELINE (1955)	134.857	L+T N CB 1FT± W BCR @ NW COR TELEGRAPH RD + VICTORIA AVE 42FT± N + 48FT± W C/L INT	SY 1162C

QUAD-YEAR	ELEV	DESCRIPTION (INCLUDE QUAD AND YEAR IN DESCRIPTION)	BM NUMBER
BASELINE (1955)	135.237	RDBM TAG E CB CN NE COR TELEGRAPH RD + VICTORIA AVE 88FT# N + 20FT# E C/L INT	SY 1163B
BASELINE (1955)	154.653	RD HD SPK NE COR CONC APRON GAS STA SW COR TELEGRAPH RD + MILLS AVE 515FT# S + 55FT# W C/L INT MKD (WZD 75)	SY 1164A
BASELINE (1955)	155.291	CT SPK CONC CB 20FT# N C/L TELEGRAPH RD + 28FT# E MILLS AVE	SY 1165A
BASELINE (1955)	148.780	L+N @ END OF CB 175FT W SANTA FE RR TRACKS + 33FT S C/L TELEGRAPH RD W OF LELAND AVE	SY 1166A
BASELINE (1955)	162.881	L+N 4FT# W BCR @ SW COR INEZ ST + TELEGRAPH RD	SY 1167A ^B
BASELINE (1955)	161.965	L+T 1FT# W BCR @ SW COR MINA ST + ANAHEIM TEL RD	SY 1168A
BASELINE (1955)	157.582	L+T N CB 3FT# E OF BCR @ NE COR TELEGRAPH RD + CARMENITA RD 38FT# N + 50FT# E C/L INT	SY 1169A
BASELINE (1955)	156.696	CS TRI MON IN WELL 14IN DN SE COR TELEGRAPH RD + CARMENITA RD 15FT# S + 25FT# E C/L INT MKD (WHITTIER G2)	SY 1170A
BASELINE (1955)	158.581	L+T N CB 36FT# W BCR @ NW COR TELEGRAPH R + LAUREL AVE 30FT# N + 92FT# W C/L INT	SY 1171A
SANTA FE (1960)	157.775	RDBM TAG N CB 1FT E BCR @ NE COR LOS NIETOS RD + PAINTER AVE 30FT N + 35FT E C/L INT	SY 1172A
SANTA FE (1960)	156.931	L+BN SE COR CONC COLLAR AROUND RECT CLEANOUT 25FT S C/L LOS NIETOS RD + 12FT W C/L PAINTER AVE	SY 1173A
SANTA FE (1960)	155.699	SPK T+W 4FT N C/L LOS NIETOS RD 18FT W C/L GREENLEAF AVE	SY 1174A
SANTA FE (1960)	158.162	L+N E SIDE CONC WK FRONT OF EDISON SUB STA 24FT S C/L LOS NIETOS RD BET GREENLEAF AVE + SANTA FE SPRINGS RD	SY 1175A
SANTA FE (1960)	158.991	SPK IN CONC 5 IN PIPE COUPLING 21FT N C/L LOS NIETOS RD 18FT W C/L SANTA FE SPRINGS RD	SY 1176A
SANTA FE (1960)	158.929	L+T CONC SLAB @ ENT TO BLDG ON NE COR LOS NIETOS RD + DICE RD 90FT N + 30FT E C/L INT MKD (BM)	SY 1178B
SANTA FE (1960)	154.305	L+BN HDWL 20FT W C/L PAINTER AVE 17FT S C/L BARTON RD	SY 1192A
SANTA FE (1960)	151.636	L+T SW COR CONC WK 62FT N C/L PRGD BARTON RD + 53FT E C/L PAINTER AVE HSE NO 9944	SY 1193
SANTA FE (1960)	145.986	LACE TAG W CB 5FT S BCR @ SW COR PAINTER AVE + MULBERRY DR 85FT S + 40FT W C/L INT	SY 1198B
SANTA FE (1960)	154.116	L+T HDWL CULV 15FT W C/L PAINTER AVE + 45FT N OF N RAIL PERR LA HABRA LINE	SY 1199
SANTA FE (1960)	154.776	L+T CONC HDWL CULV 15FT E C/L PAINTER AVE + 45FT N OF N RAIL PERR LA HABRA LINE	SY 1200
SANTA FE (1960)	210.045	L+SPK W CB 13FT N BCR @ NW COR PAINTER AVE + CULLEN ST TO THE W MKD (WZ 68)	SY 1205
SANTA FE (1960)	217.904	L+SPK W CB PAINTER AVE 10FT N C/L PRGD CULLEN ST TO THE E MKD (WZ 67)	SY 1206

QUAD-YEAR	ELEV	DESCRIPTION (INCLUDE QUAD AND YEAR IN DESCRIPTION)	BM NUMBER
BASELINE (1955)	235.946	RDBM TAG W CB 1FT N CATCH BASIN @ SW COR PAINTER AVE + WHITTIER BLVD 125FT S + 20FT W C/L INT	SY 1207A
BASELINE (1955)	238.657	RDBM TAG CONC RETAINING WALL + SW COR WHITTIER BLVD + LAUREL AVE 6FT S CB FACE 54FT S OLD C/L WHITTIER BLVD 45FT W C/L LAUREL AVE	SY 1209B
BASELINE (1955)	233.442	L+T 1FT S BCR @ SE COR WHITTIER BLVD + BARTON RD	SY 1210
BASELINE (1955)	232.401	L+T S CB PKWY 1FT E BCR @ NE COR WHITTIER BLVD SERVICE RD + JACMAR AVE	SY 1211
BASELINE (1955)	236.960	L+T S CB PKWY @ BCR @ NW COR WHITTIER BLVD SERVICE RD + BOYAR AVE	SY 1212A
BASELINE (1955)	259.532	L+T CONC DRWY GAS STATION 52FT S C/L WHITTIER BLVD 40FT E C/L OCEAN VIEW AVE	SY 1214
BASELINE (1955)	266.658	L+T S CB WHITTIER BLVD 40FT S C/L + 136FT E C/L PROD CATALINA AVE	SY 1215B
BASELINE (1955)	264.742	L+T 1FT W BCR @ SW COR WHITTIER BLVD + GUNN AVE 40FT S C/L WHITTIER BLVD	SY 1216B
SANTA FE (1960)	232.315	L+N IN 4IN RET CB 45FT W C/L COLIMA RD @ HSE NO 10001	SY 1222A
SANTA FE (1960)	205.009	L+T W CB COLIMA RD 35FT S C/L CARNELL AVE	SY 1224
SANTA FE (1960)	181.600	L+T S END CONC BRIDGE CB 400FT N HAWES ST 13FT E C/L COLIMA RD BRIDGE NO B 784	SY 1226A
SANTA FE (1960)	197.778	L+T S CB 1FT W BCR @ SE COR COLIMA RD + SANTA FE ST 36FT S + 45FT E C/L INT	SY 1228B
SANTA FE (1960)	215.375	L+T SE COR 2X2 CONC SLAB 35FT W C/L COLIMA RD 30FT N C/L BROADWAY	SY 1229A
SANTA FE (1960)	216.951	L+T NE COR CONC WK 20FT W C/L COLIMA RD 45FT S C/L BROADWAY HSE NO 10901 COLIMA RD	SY 1230A
SANTA FE (1960)	222.087	L+T S EDGE CONCRETE SLOPING GUTTER 14FT S C/L MYSTIC ST 30FT E C/L COLIMA RD	SY 1231A
SANTA FE (1960)	208.611	CS BR TAG @ C/L PROD CORNISHCREST RD E CB COLIMA RD 20FT E C/L	SY 1232A
SANTA FE (1960)	209.533	L+BN 6FT W BCR @ NW COR COLIMA RD + CORNISHCREST RD 57FT W + 18FT N C/L INT MKD (WZ 404)	SY 1233A
BASELINE (1955)	188.768	CS MON IN WELL 6IN DN ON C/L TELEGRAPH RD 10FT+ ELY C/L COLIMA RD MKD (CO. ENG. MON RE 5869)	SY 1234A
SANTA FE (1960)	159.876	L+T CTR CONC APRON FRONT GARAGE TO HSE NO 10612 MILLS AVE	SY 1283A
SANTA FE (1960)	138.332	L+T NE COR CONC WK @ SW COR MILLS AVE + CLOSE ST FRONT HSE NC 13954 CLOSE ST	SY 1285A
SANTA FE (1960)	138.996	L+T NR CTR CB RET @ NW COR REIS AVE + MILLS AVE 25FT N + 40FT W C/L INT	SY 1286A
SANTA FE (1960)	142.821	L+T 2FT S BCR @ SE COR ANOLA ST + MILLS AVE	SY 1287

QUAD-YEAR	ELEV	D E S C R I P T I O N (INCLUDE QUAD AND YEAR IN DESCRIPTION)	BM NUMBER
SANTA FE (1960)	145.804	L+T 1FT E BCR @ SE COR MYSTIC ST + MILLS AVE	SY 1288
SANTA FE (1960)	147.716	L+T 2FT E BCR @ SE COR LIGHT ST + MILLS AVE	SY 1289
SANTA FE (1960)	149.186	CS MON IN WELL 14IN DN @ OR NR C/L INT MILLS AVE + + BROADWAY MKD (CO SUR MON RE 329)	SY 1290A
SANTA FE (1960)	152.060	L+T 1FT W BCR @ SW COR VICTORIA AVE + BROADWAY	SY 1291
SANTA FE (1960)	154.145	L+T W EDGE CONC DRWY 143FT E C/L ELMORE AVE + 20FT S C/L BROADWAY	SY 1292
SANTA FE (1960)	163.444	L+T N CB BRIDGE NO 785 10FT W OF E END OF BRIDGE ON BROADWAY 375FT W CERES AVE	SY 1293
SANTA FE (1960)	193.325	L+T CTR CB RET 18FT W C/L PROD VALLEY VIEW AVE + 20FT N C/L BROADWAY	SY 1296
SANTA FE (1960)	193.412	L+T IN CB RET 4FT W C/L PROD VALLEY VIEW AVE + 28FT N C/L BROADWAY	SY 1297
BASELINE (1955)	157.909	L+T W CB 1FT# N BCR @ NW COR TELEGRAPH RD + LAUREL AVE 68FT# N + 20FT# W C/L INT	SY 1830A
BASELINE (1955)	160.870	L+N IN WK @ STEPS HSE NO 13026 TELEGRAPH RD (1ST HSE E OF SHOEMAKER AVE)	SY 1833A
BASELINE (1955)	159.619	L+T SW COR CONC VALVE BOX ON NW COR TELEGRAPH RD + SHOEMAKER AVE 32FT# N + 13FT# W C/L INT	SY 1834A
BASELINE (1955)	156.422	L+T SW COR CONC BASE SW COR STEEL TOWER 47FT# E C/L ROMMANDEL AVE 57FT# N C/L TELEGRAPH RD	SY 1835A
BASELINE (1955)	155.014	CHIS X ON E BOLT W CONC BOX 13FT# W SANTA FE OUTBOUND TRACK + 60FT# S C/L TELEGRAPH RD	SY 1836A
BASELINE (1955)	151.990	CS MON IN WELL 8IN DN @ OR NR C/L INT TELEGRAPH RD + BLOOMFIELD AVE MKD (WHITTIER E7-A)	SY 1837A
BASELINE (1955)	153.838	L+T 1FT# N SE COR 1ST CONC STEP 70FT# N C/L TELEGRAPH RD + 67FT# W C/L BLOOMFIELD AVE	SY 1838A
BASELINE (1955)	146.689	L+BN NW COR CONC BASE OF GAS ENGINE FOR WELL NO 7-TEXAS CO WEAVER LEASE 65FT# S C/L TELEGRAPH RD 84FT# E C/L SPRING ST	SY 1839
BASELINE (1955)	144.148	L+BN NR NE COR CONC BASE NE COR OIL DERRIC SW COR WILLIS ST + TELEGRAPH RD	SY 1840
SANTA FE (1960)	175.837	CS MON IN WELL 12IN DN @ OR NR C/L INT LAMBERT RD + PAINTER AVE MKD (CO ENG MONU RE 5869)	SY 2532A
SANTA FE (1960)	176.795	L+BN N CB 10FT W BCR @ NW COR LAMBERT RD + PAINTER AVE 30FT N + 86FT W C/L INT MKD (SD 1621)	SY 2533A
SANTA FE (1960)	176.490	L+BN N CB @ NW COR PARKING AREA 15FT E OF W ENT LAUREL ELEMENTARY SCHOOL 45FT S C/L LAMBERT RD 13500 BLOCK	SY 2535A
SANTA FE (1960)	177.076	L+T W CB 1FT S BCR @ SW COR LAMBERT RD + LAUREL AVE 65FT S + 20FT W C/L INT	SY 2536A
SANTA FE (1960)	177.916	L+BN S CB 1FT E BCR @ SE COR LAMBERT RD + LAUREL AVE	SY 2537A

QUAD-YEAR	ELEV	DESCRIPTION (INCLUDE QUAD AND YEAR IN DESCRIPTION)	BM NUMBER
SANTA FE (1960)	178.819	L+BN S CB LAMBERT RD 8FT W C/L PROD TARRYTON AVE	SY 2538
SANTA FE (1960)	177.632	L+BN S CB 1FT W BCR @ SW COR LAMBERT RD + COACHMAN AVE	SY 2539
SANTA FE (1960)	180.165	L+BN S CB LAMBERT RD 3FT W C/L PROD EDMARU AVE 8FT W OF END OF CB	SY 2540
SANTA FE (1960)	182.118	CS MON ON C/L WALNUT WAY 35FT S OLD C/L INT LAMBERT RD + WALNUT WAY 83FT S OF S RAIL UPRR	SY 2541
SANTA FE (1960)	181.354	L+BN W CB 1FT S BCR @ SW COR LAMBERT RD + WALNUT WAY 75FT S + 18FT W C/L INT	SY 2542A
SANTA FE (1960)	191.072	RDBM TAG S CB 1FT W BCR @ SW COR LAMBERT RD + GUNN AVE 30FT S + 66FT W C/L INT	SY 2544A
SANTA FE (1960)	192.361	RDBM TAG S CB 60FT E BCR @ SE COR LAMBERT RD + GUNN AVE 30FT S + 85FT E C/L INT	SY 2545A
SANTA FE (1960)	194.613	L+T N END CONC STEP HSE NO 9600 @ SE COR ARMLEY ST + LAMBERT RD	SY 2547A
SANTA FE (1960)	194.167	L+T N END CONC STEP HSE NO 9615 @ SW COR MILLS AVE + LAMBERT RD	SY 2548
SANTA FE (1960)	185.944	L+T NE COR CONC STEP HSE NO 9665 W SIDE MILLS AVE 550FT S LAMBERT RD	SY 2549
SANTA FE (1960)	176.965	L+T NE COR CONC STEP HSE NO 9753 MILLS AVE W SIDE 1050FT S LAMBERT RD	SY 2550
SANTA FE (1960)	164.262	L+T NE COR CONC STEP HSE NO 9903 @ SW COR MILLS AVE + HAWES ST	SY 2551
SANTA FE (1960)	156.713	L+T N CB 6FT W BCR @ NW COR MILLS AVE + MULBERRY DR 40FT N + 68FT W C/L INT	SY 2552A
SANTA FE (1960)	157.406	L+T E CB 7FT N BCR @ NE COR MILLS AVE + MINES BLVD 28FT E + 96FT N C/L INT	SY 2553A
BASELINE (1955)	211.828	L+BN NR W END CB 40FT S C/L LEFFINGWELL RD + 21FT E PRIVATE RD (GLADHILL RD)	SY 2733B
BASELINE (1955)	225.025	L+BN 3FT W BCR @ NW COR LEFFINGWELL RD + STAMY RD 36FT N + 60FT W C/L INT	SY 2734B
BASELINE (1955)	216.866	L+T DEP CB DRWY GAS STA NW COR LUITWIELER AVE + LEFFINGWELL RD 70FT W + 40FT N C/L INT	SY 2738B
BASELINE (1955)	216.970	L+T 7FT E BCR @ SW COR LEFFINGWELL RD + LUITWIELER AVE 41FT S + 50FT W C/L INT	SY 2739A
BASELINE (1955)	191.739	L+BN W END CATCH BASIN N SIDE LEFFINGWELL RD 40FT N C/L + 450FT W C/L LUITWIELER AVE 500FT E C/L ARROYO DR	SY 2740A
BASELINE (1955)	186.559	L+BN 1FT W BCR @ SW COR LEFFINGWELL RD + ARROYO DR 40FT S + 50FT W C/L INT	SY 2741B
BASELINE (1955)	213.555	L+BN S CB LEFFINGWELL RD ACROSS ST FROM HSE NO 14701 3FT W PP NO 1075162E 1000FT E TELEGRAPH RD	SY 2742A
BASELINE (1955)	198.697	L+BN 1FT S BCR @ SE COR LEFFINGWELL RD + ARMSCALE AVE 20FT E + 102FT S C/L INT	SY 2743A
BASELINE (1955)	190.304	CS MON IN WELL BIN DN CTR DIVIDER ISLAND TELEGRAPH RD 6FT± N C/L + 90FT± WLY LEFFINGWELL RD MKD (WHITTIER M 2 BM)	SY 2744A

QUAD-YEAR	ELEV	DESCRIPTION (INCLUDE QUAD AND YEAR IN DESCRIPTION)	BM NUMBER
BASELINE (1955)	188.377	CS MON 11FT± N C/L LEFFINGWELL RD 44FT± W OF C/L INT TELEGRAPH RD + LEFFINGWELL RD 30FT± S C/L TELEGRAPH RD	SY 2745
BASELINE (1955)	176.345	CS MON NR C/L INT NORWALK BLVD + WHITTIER BLVD	SY 3253A
BASELINE (1955)	168.692	L+B W CB 16FT S BCR @ SW COR BEXLEY DR + NORWALK BLVD	SY 3254
BASELINE (1955)	167.956	L+B W CB 3FT S BCR @ NW COR REICHLING LANE + NORWALK BLVD	SY 3255
BASELINE (1955)	167.050	L+B W CB 2FT S BCR @ NW COR ROSE HEDGE DR + NORWALK BLVD	SY 3256
BASELINE (1955)	165.122	L+SPK E CB 5FT S BCR @ SE COR DUNLAP CROSSING RD (MINES BLVD) + NORWALK BLVD 38FT E + 77FT S C/L INT	SY 3257A
BASELINE (1955)	163.822	L+BR W CB 3FT N BCR @ NW COR COOLHURST DR + NORWALK BLVD 38FT W + 56FT N C/L INT	SY 3258
BASELINE (1955)	163.205	LS 1102 TAG E CB 2FT N BCR @ NW COR BALFOUR ST + NORWALK BLVD	SY 3259
BASELINE (1955)	162.415	L+BN E CB 1FT S BCR @ SE COR FLORY ST + NORWALK BLVD	SY 3260
BASELINE (1955)	161.022	CS MON 16FT W OF E CB FRONT HSE NO 7440 NORWALK BLVD	SY 3261
BASELINE (1955)	161.215	RE 2059 TAG NE EDGE CONC WK FRONT OF HSE NO 7608 NORWALK BLVD 6FT NW WK 50FT E C/L NORWALK BLVD + 112FT S CHOISSER ST	SY 3262
BASELINE (1955)	159.293	L+BN NE CB 2FT NW BCR BRONT HSE NO 7744 38FT E C/L NORWALK BLVD + 56FT S C/L PROD ROCKNE AVE TO THE W	SY 3263A
BASELINE (1955)	155.761	L+T W EDGE CONC DRWY TO HSE NO 8111 NORWALK BLVD 32FT W C/L + 19FT S C/L PROD BOER ST TO THE E	SY 3265A
BASELINE (1955)	154.457	L+BN W CB 1FT N BCR @ NW COR WADDELL ST + NORWALK BLVD 38FT W + 60FT N C/L INT	SY 3266A
BASELINE (1955)	154.084	L+T E CB 45FT E C/L NORWALK BLVD 10FT N OF N SIDE OF HSE NO 8308	SY 3267A
BASELINE (1955)	152.448	L+BN W CB 2FT N BCR @ NW COR AECLIAN ST + SERVICE RD NORWALK BLVD 50FT N + 70FT W C/L INT	SY 3268A
BASELINE (1955)	150.723	CS MON 28FT W C/L NORWALK BLVD + 68FT S C/L SLAUSON AVE	SY 3269A
BASELINE (1955)	156.903	L+T IN SWLY COR OF CONC CBING AROUND A FIRE HYDRANT 44FT E/O C/L NORWALK BLVD + 44FT N/O CTR OF MAIN DRWY ENTRANCE TO PACIFIC CLAY PRODUCTS YARD	SY 3272B
BASELINE (1955)	153.568	L+BN N CB N DRWY LA CO FIRE STA 17 NO 9702 NORWALK BL 27FT E C/L	SY 3273A
BASELINE (1955)	150.633	CS MON STAMPED (BM 2-12 RE 329 1951) IN WELL W/ COVER 9FT W/O C/L NORWALK BLVD + 11FT S/O C/L BELL RANCH RD 3130FT N/O TELEGRAPH RD	SY 3274B
BASELINE (1955)	148.075	L+BN NW COR OF CB FRONT OF BLDG NO 10122 NORWALK BLVD 38 FT E C/L	SY 3275B

QUAD-YEAR	ELEV	DESCRIPTION (INCLUDE QUAD AND YEAR IN DESCRIPTION)	BM NUMBER
BASELINE (1955)	141.622	L+T CONC WALK NW COR BLDG NO 12200 TELEGRAPH RD 38FT S C/L TELEGRAPH RD 42FT E C/L NORWALK BLVD 1FT N BLDG + 2FT E CF NW COR BLDG	SY 3276A
BASELINE (1955)	.	BLVD 38FT E C/L	SY 3275B
SANTA FE (1960)	195.266	L+T 1FT E BCR @ S E COR ARMLEY AVE + LAMBERT AVE	SY 3442
SANTA FE (1960)	194.755	L+BRAD E CB 4FT SO CF BCR @ SE COR MILLS AVE + LAMBERT RD 52FT SO + 30FT E C/L INT	SY 3443A
SANTA FE (1960)	196.942	RD HD SPK E CB 8IN SO OF BCR @ SE COR LAMBERT RD + BONA VISTA LANE 85FT SO + 18FT E C/L INT MKD (W2 455)	SY 3446A
SANTA FE (1960)	197.993	C S MON IN CASE W COVER 145FT E C/L BONA VISTA LANE + ON C/L LAMBERT RD	SY 3447
SANTA FE (1960)	195.335	L+T S CB LAMBERT RD 2FT W CB RET @ S W COR CORLEY DR + LAMBERT RD	SY 3448
SANTA FE (1960)	191.770	L+BN W CB COLIMA RD 1FT S CB RET @ SW COR COLIMA RD + LAMBERT RD	SY 3449
SANTA FE (1960)	197.734	L+T S CB LAMBERT RD 2FT E CB RET @ S E COR COLIMA RD + LAMBERT RD	SY 3451
SANTA FE (1960)	197.389	L+BN S CB LAMBERT RD 1FT INTO RET FROM BCR @ S W COR LAMBERT RD + BLUEFIELD AVE	SY 3452
SANTA FE (1960)	198.143	L+BN W CB BLUEFIELD AVE 1FT S BCR @ S W COR BLUEFIELD AVE + LAMBERT RD	SY 3453
SANTA FE (1960)	218.755	L+BN 5FT N OF S END OF CB 30FT N OF U P R R TRACKS + ON THE W SIDE OF SCOTT ST	SY 3456
SANTA FE (1960)	216.771	L+T 10FT S BCR ON W CB SCOTT ST + S ON DRWY TO PARNELL PREP SCHOOL	SY 3457
SANTA FE (1960)	219.851	C S MON 8IN DEEP ON C/L LAMBERT RD + 4FT E 2IN I P PLUG + T 8IN DEEP @ C/L INT LAMBERT RD + JENKINS DR	SY 3458
SANTA FE (1960)	218.570	L+T CB LAMBERT AVE 10FT E OF END OF CB + 75FT E C/L INT LAMBERT RD + JENKINS DR	SY 3459
SANTA FE (1960)	228.098	L+T S CB LAMBERT RD 4FT W CB RET @ S W COR LAMBERT RD + KIBBEE AVE	SY 3460
SANTA FE (1960)	241.924	TAG N CB 1FT W BCR @ N W COR LAMBERT RD + SANTA GERTRUDES AVE 30FT N + 70FT W C/L INT	SY 3462A
SANTA FE (1960)	241.943	RAMSET S CB 2FT W BCR @ SW COR LAMBERT RD + SANTA GERTRUDES AVE 30FT S + 42FT W C/L INT	SY 3463A
BASELINE (1955)	254.105	CO JUR ANG PT MON IN WELL 10IN DN ON C/L LEFFINGWELL RD + 55FT S WLY OF S WLY RAIL OF UPRR APPROX C/L OF TWO TRACKS 1000FT ELY SANTA GERTRUDES AVE MKD (LA HABRA B9 AUX 1960)	SY 3464B
BASELINE (1955)	263.295	C S MON 24FT N ON FIRST AVE FROM C/L INT LEFFINGWELL RD 40FT E C/L FIRST AVE	SY 3465
SANTA FE (1955) 1960	280.774	L+BN W CB FIRST AVE 18FT N BCR @ NW COR FIRST AVE + RISLEY ST	SY 3468
SANTA FE (1960)	284.648	L+BN W CB FIRST AVE 17FT N BCR @ NW COR FIRST AVE + CITRUSTREE RD	SY 3469

JUL 1964

LOS ANGELES COUNTY ROAD DEPARTMENT
SURVEY SECTION FIELD ENGINEERING DIVISION

PAGE 8

QUAD-YEAR	ELEV	DESCRIPTION (INCLUDE QUAD AND YEAR IN DESCRIPTION)	BM NUMBER
SANTA FE (1960)	288.645	L+BN W CB FIRST AVE 18FT N BCR @ NW COR FIRST AVE + HALDANE ST	SY 3470
BASELINE (1955)	291.540	C S MON 100FT S C/L WHITTIER BLVD + 5FT E C/L FIRST AVE	SY 3471A
BASELINE (1955)	292.370	L+SPK S CB WHITTIER BLVD @ FIRST AVE 48FT W BCR 40FT S + 90FT W C/L INT (BM NO 2)	SY 3472B
BASELINE (1955)	333.144	C S MON 1FT BACK OF CB @ NE COR WHITTIER BLVD + VALLEY HOME AVE 52FT N 24FT E C/L INT	SY 3475B
BASELINE (1955)	334.156	L+BN S END CONC CATCH BASIN 1FT N BCR E SIDE VALLEY HOME AVE @ NE COR VALLEY HOME AVE + WHITTIER BLVD	SY 3476A
BASELINE (1955)	274.388	ST HWY BR MON IN E END OF CATCH BASIN 41FT S C/L WHITTIER BLVD + 15FT W C/L PROD OF SANTA GERTRUDES AVE	SY 3487A
BASELINE (1955)	264.085	L+T 1FT N BCR @ NW COR WHITTIER BLVD + SANTA GERTRUDES AVE 76FT N + 30FT W C/L INT	SY 3488B
BASELINE (1955)	251.513	L+BN NR S EDGE SLAB FRONT OF BLDG NO 15401 WHITTIER BLVD (MURPHY RANCH MUTUAL WATER CD) 70FT N C/L WHITTIER BLVD 551FT E C/L SCOTT AVE	SY 3490B
BASELINE (1955)	249.105	STATE BR CAP E END CATCH BASIN 40FT N C/L WHITTIER BLVD 266FT E C/L SCOTT AVE	SY 3491B
BASELINE (1955)	251.119	L+T CTR OF GAS ISLAND @ SE COR WHITTIER BLVD + SCOTT AVE 67FT S + 121FT E C/L INT	SY 3492A
BASELINE (1955)	259.483	L+T 2FT N BCR TO E CB LASERNA DR @ NE COR LA SERNA DR + WHITTIER BLVD	SY 3493
BASELINE (1955)	263.196	L+T NE COR CONC WK AROUND GAS STA NO 15020 120FT S C/L WHITTIER BLVD 60FT W C/L COLE RD	SY 3494A
BASELINE (1955)	259.089	F C SUR MON IN WELL W/COVER 100FT S C/L WHITTIER BLVD 6.5FT E C/L COLIMA RD MKD (BM 1-11-53 RE 329)	SY 3495A
BASELINE (1955)	251.362	L+SPK N CB WHITTIER BLVD SERVICE RD 5FT W CB RET NW COR WHITTIER BLVD + LA PUEBLA AVE	SY 3496A
BASELINE (1955)	245.445	L+SPK CB OF SERVICE RD OF WHITTIER BLVD 5FT W OF CB 63FT W C/L MILLS AVE (MKD WZ 118A)	SY 3497B
BASELINE (1955)	249.337	L+SPK N CB OF SERVICE RD 18FT E BCR @ NE COR LA ENTRADA AVE + WHITTIER BLVD	SY 3498B
BASELINE (1955)	260.956	L+T W CB OF HIGHLAND AVE 75FT N C/L WHITTIER BLV @ NW COR WHITTIER BLVD + HIGHLAND AVE	SY 3499A
SANTA FE (1960)	233.179	L+SPK W CB PAINTER AVE 6FT S CB RET 1ST ALLEY S OF WHITTIER BLVD MKD (WZ 60)	SY 3500
BASELINE (1955)	161.557	L+T E CB 4FT S OF S P/L OF HSE NO 7440 NORWALK BLVD (FRONT OF PP NO 246625E) 38FT E C/L NORWALK BLVD 100FT N C/L SAROGOSA ST PROD FROM W	SY 3706A
BASELINE (1955)	161.173	RAM SET NR CTR CB RET ON SE COR CHOISSER ST + NORWALK BLVD	SY 3707
BASELINE (1955)	158.104	RAM SET 3FT N OF NW CB RET ON WASHINGTON + NORWALK BLVD	SY 3708

QUAD-YEAR	ELEV	DESCRIPTION (INCLUDE QUAD AND YEAR IN DESCRIPTION)	BM NUMBER
BASELINE (1955)	158.495	CS MON STAMPED (BM Z-14A 1961 RE 5869) SET IN CONC BASE OF TRAFFIC SIGNAL LIGHT IN TRAFFIC SIGNAL LIGHT IN TRAFFIC ISLAND 40FT NE/O C/L WASHINGTON BLVD + 34FT SW/O C/L NORWALK BLVD	SY 3709A
SANTA FE (1960)	156.125	L+BN 2FT E OF E CB RET ON ENT TO BUILDING NO 11215 ON N CB WASHINGTON BLVD	SY 3710
SANTA FE (1960)	155.646	L+BN 1FT E END OF CB ON NE COR DUCHESS ST + WASHINGTON BLVD	SY 3711
SANTA FE (1960)	154.985	L+T 5FT SLY CTR OF CB RET ON NW COR OF BROADWAY + WASHINGTON BLVD	SY 3713
SANTA FE (1960)	154.709	L+T 5FT NLY CTR CB RET ON SE COR BROADWAY + WASHINGTON BLVD	SY 3714
SANTA FE (1960)	154.059	L+BN 1FT W CB RET ON NW COR GRETNA AVE + WASHINGTON BLVD	SY 3715
SANTA FE (1960)	154.618	L+BN 1FT E CB RET ON NE COR GRETNA AVE + WASHINGTON BLVD	SY 3716
SANTA FE (1960)	156.320	L+SPK S COR CONC HDWL 50FT W C/L ALLPORT + 45FT S C/L WASHINGTON BLVD	SY 3717
SANTA FE (1960)	153.881	L+BN IN 5X6 CONC VALVE BOX NR E P/L OF BUILDING NO 11655 40FT N C/L WASHINGTON BLVD	SY 3718
SANTA FE (1960)	154.775	L+T WLY CE 9FT SLY BCR @ NWLY COR SORENSEN AVE + WASHINGTON BLVD 68FT NLY + 40FT WLY C/L INT MKD (BM)	SY 3719A
SANTA FE (1960)	155.604	L+T W CB OF W DRWY TO TRAILER PK NO 11803 @ NE COR OF SORENSEN AVE + WASHINGTON BLVD 45FT N WASHINGTON BLVD	SY 3720A
SANTA FE (1960)	154.725	L+BN 1FT W CB RET ON NW COR APPLEDALE AVE + WASHINGTON BLVD	SY 3721A
SANTA FE (1960)	154.657	L+BN 1FT E CB RET ON S SIDE OF PKWY ON NE COR APPLEDALE AVE + WASHINGTON BLVD	SY 3722
SANTA FE (1960)	153.856	L+BN CTR OF HDWL OF DRAIN ALONG N CB WASHINGTON BLVD FRONT OF HSE NO 12047 35FT N C/L WASHINGTON BLVD	SY 3723
SANTA FE (1960)	156.696	L+BN 1FT W CB RET ON N CB OF PKWY ON NW COR CROWDALE AVE + WASHINGTON BLVD	SY 3724
SANTA FE (1960)	157.174	L+BN 1FT E CB RET NE COR CROWDALE AVE + WASHINGTON BLVD	SY 3725A
SANTA FE (1960)	173.106	RAM SET SLY CB WASHINGTON BLVD 40FT SLY + 47FT ELY C/L LAMBERT RD	SY 3727A
SANTA FE (1960)	188.596	L+T ON N CB OF WASHINGTON BLVD ON C/L PROD PERSING RD	SY 3728
SANTA FE (1960)	193.738	CS MON IN WELL 8IN DN @ CR NR C/L INT WASHINGTON BLVD + PUTMAN DR TO THE E MKD (CC SUR MON RE63)	SY 3729A
BASELINE (1955)	218.757	RD BM TAG CB 1FT N ECR @ SE COR OF WHITTIER BLVD + MILTON AVE 74FT S + 18FT W C/L INT	SY 3731A
BASELINE (1955)	220.945	RD BM TAG CB 1FT N ECR @ SE COR WHITTIER BLVD + COMSTOCK AVE 74FT S + 18FT W C/L INT	SY 3732A

