

**COUNTY OF LOS ANGELES**

**ROAD DEPARTMENT**



**SOUTH GATE QUAD**

**BENCH MARKS**

**1960**

## PREFACE

The Road Department level net is composed of some 1,000 miles of levels supporting more than 10,000 bench marks. In 1955, a major re-adjustment of the net was undertaken resulting in revised bench mark elevations of which the accompanying list is a part.

To facilitate the adjustment, indexing, and distribution of adjusted values of the net, the county territory was divided into 30 quads or areas. For identification purposes each quad was given a name, viz., "Rosemead", "La Mirada", "Santa Fe", etc. When bench marks and elevations in the Road Dept. net are used, the name of the quad in which the bench mark is located and the date of the adjustment of the elevation must be included in the bench mark description, e.g.,

SO 908 - L & T in E. cb. Miscatel Ave. on C/L prod.  
Scott St. (Rosemead - 1955)                      Elev. 333.517

It is expected that this general adjustment will, for the most part, remain sound for the next 15 or 20 years. As new circuits are completed, however, re-adjustment of individual quads may become advisable. It is expected that these subsequent adjustments will be in the nature of a few hundredths of a foot. When a quad is re-adjusted, new elevation lists will be published and the date of the re-adjustment will replace the "1955" at the end of the bench mark description. Two bench marks in the same quad with different adjustment dates will not normally join each other. Since all adjustments taper out to nothing at the periphery of the quad, any bench mark in one quad will join any bench mark in another quad regardless of their respective adjustment dates.

The basic accuracy of the net is reflected by an indicated field probable error of  $\pm 0.12$  foot per mile of leveling as determined from 298 conditions of closure. However, many years experience in vertical control in the greater Los Angeles basin & Antelope Valley indicate that because of varying degrees of subsidence and heaving, the true datum is recovered only by obtaining substantial agreement of a number of bench marks.

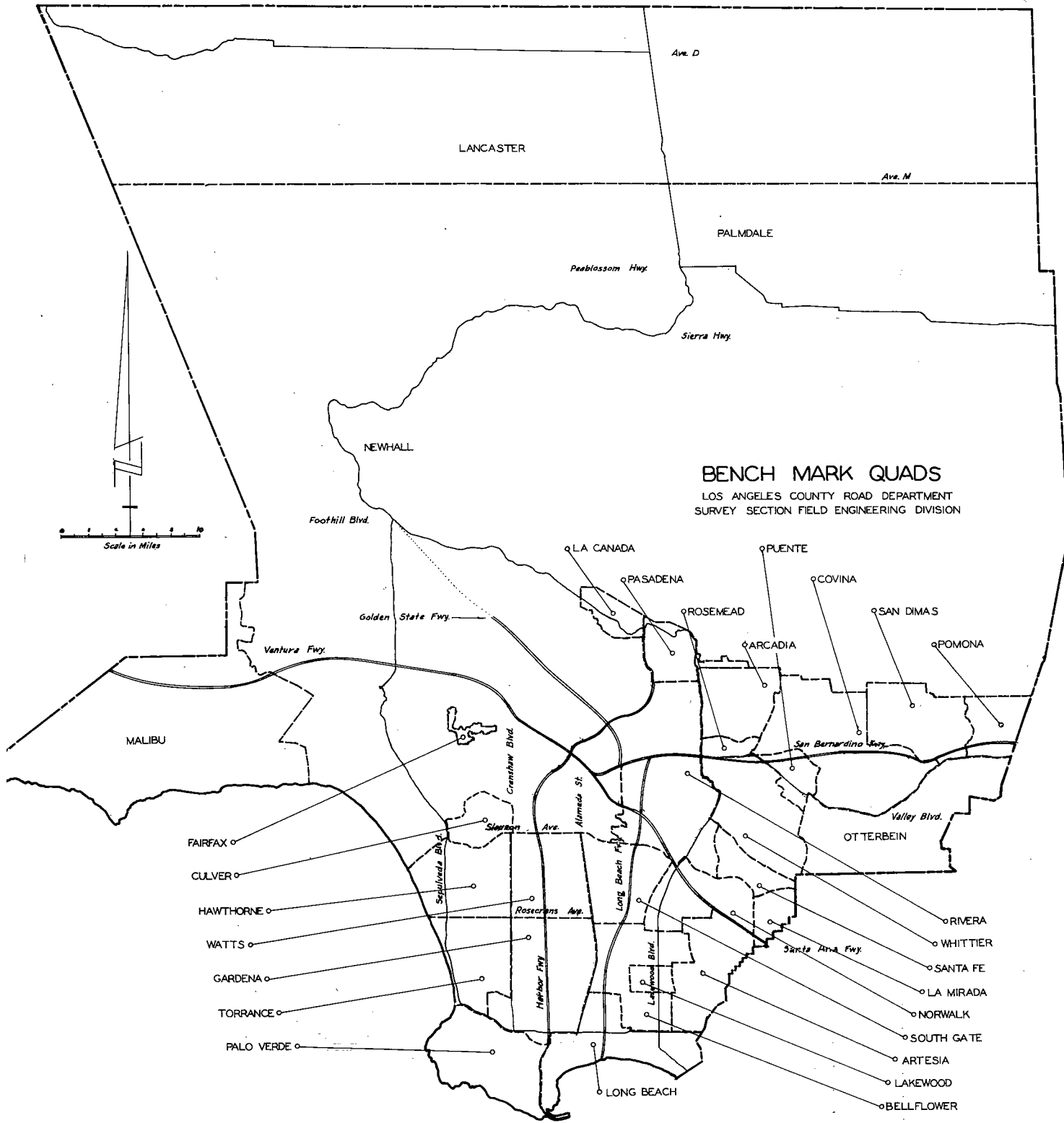
The users of this net are invited to assist in its maintenance by notifying this Department of cases of obliteration, apparent mistakes in descriptions or elevations, and proven disturbance of bench marks.

---

Datum: U.S. Coast and Geodetic Survey Sea Level Datum of 1929, through the medium of the Los Angeles County Engineer Precise Level Net, 1952 Adjustment.

## Abbreviations Used in Bench Mark Listings

|  |  |
|--|--|
| ABUT--Abutment                                   | L+BN--Lead and Bench Mark Nail                     |
| ANG PT--Angle Point                              | L+BR--Lead and Brad                                |
| BC--Beginning of Curve                           | L+N--Lead and Nail                                 |
| BCR--Beginning of Curb Return                    | L+PK--Lead and PK Nail                             |
| BLDG--Building                                   | L+SPK--Lead and Spike                              |
| BT SPK--Boat or Bolt Spike                       | L+T--Lead and Tack                                 |
| CB RET--Curb Return                              | MCR--Middle of Curb Return                         |
| C/L INT--Center Line Intersection                | MKD--Marked  |
| C/L PROD--Center Line Produced                   | NR--Near   |
| COE--Corps of Engineers                          | OPP--Opposite                                      |
| CONC--Concrete                                   | PI--Point of Intersection                          |
| CS MON--County Surveyor Monument                 | PK+W--PK Nail and Washer                           |
| CS BR CAP--County Surveyor Brass<br>Cap Monument | P/L--Property Line                                 |
| CT SPK--Cut Spike                                | P O S T--Point on Semi-tangent                     |
| CTR--Center                                      | PP--Power Pole                                     |
| DN--Down   | PVMT--Pavement                                     |
| DR--Driveway                                     | R D--Road Department                               |
| EC--End of Curve                                 | RDBM--Road Department Bench Mark                   |
| ENT--Entrance                                    | RR--Railroad                                       |
| FC--Flood Control (Dept. LA County)              | SPK T+W--Spike, Tin and Washer                     |
| FTG--Footing                                     | USC+GS--United States Coast and<br>Geodetic Survey |
| HDWL--Headwall                                   | USGS--United States Geological Survey              |
| HSE--House                                       | WK--Walk   |
| IP--Iron Pipe                                    | ±--Plus or Minus                                   |
| LACE--Los Angeles City Engineer                  | +--And   |





SLAUSON AVE.

FLORENCE AVE.

ROSECRANS AVE.

TO WATTS QUAD

TO GARDENA QUAD

TO BELLFLOWER QUAD

COMPTON

ALAMEDA ST.  
3835  
3836

EASTERN AVE.  
3214  
1558

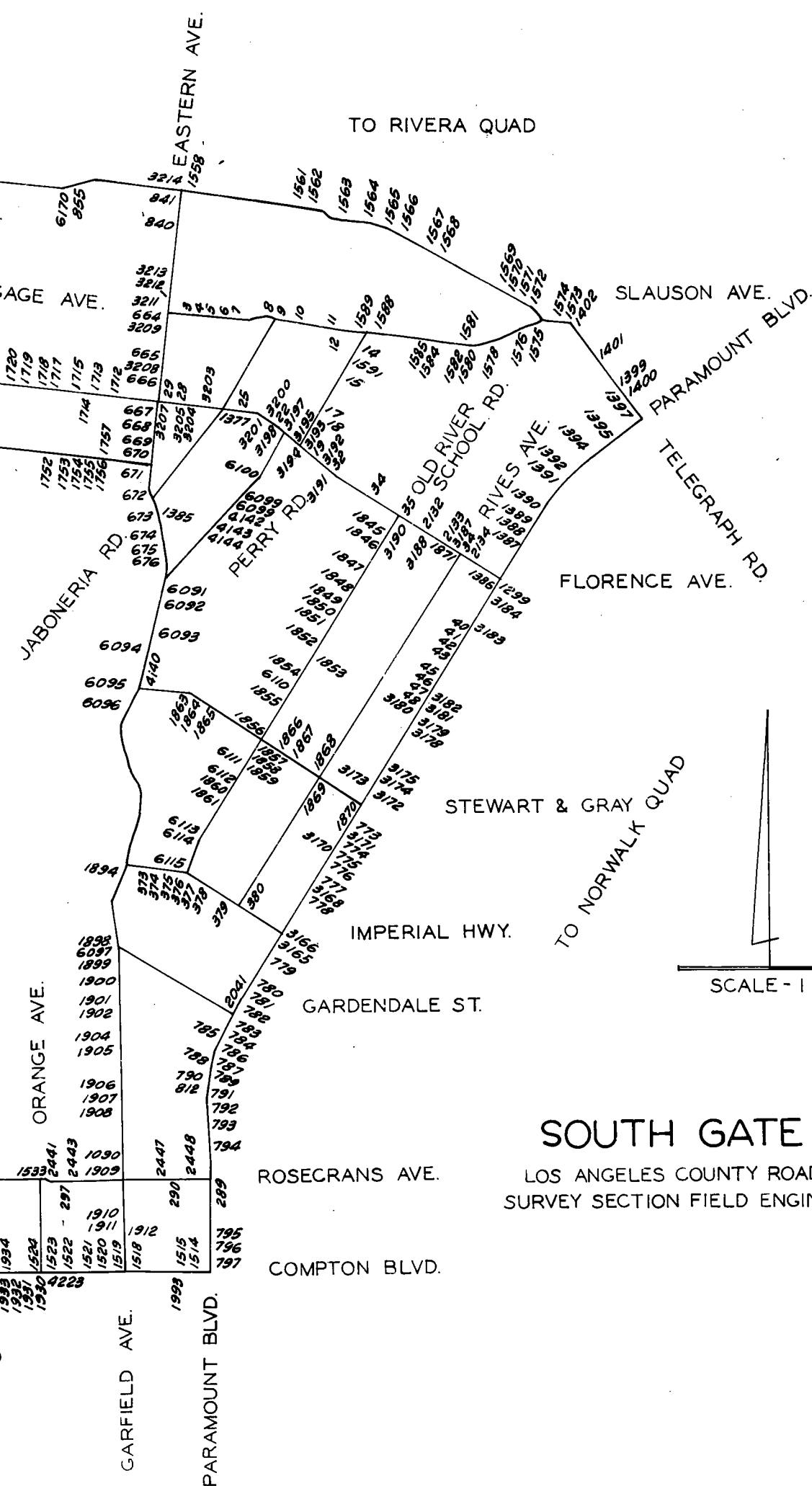
3806  
3805  
3804  
3823  
3824  
3825  
3826  
3827  
3828  
3829  
3830  
3831  
3832  
3833  
3834  
3835  
3836  
3837  
3838  
3839  
3840  
3841  
3842  
3843  
3844  
3845  
3846  
3847  
3848  
3849  
3850  
3851  
3852  
3853  
3854  
3855  
3856  
3857  
3858  
3859  
3860  
3861  
3862  
3863  
3864  
3865  
3866  
3867  
3868  
3869  
3870  
3871  
3872  
3873  
3874  
3875  
3876  
3877  
3878  
3879  
3880  
3881  
3882  
3883  
3884  
3885  
3886  
3887  
3888  
3889  
3890  
3891  
3892  
3893  
3894  
3895  
3896  
3897  
3898  
3899  
3900  
3901  
3902  
3903  
3904  
3905  
3906  
3907  
3908  
3909  
3910  
3911  
3912  
3913  
3914  
3915  
3916  
3917  
3918  
3919  
3920  
3921  
3922  
3923  
3924  
3925  
3926  
3927  
3928  
3929  
3930  
3931  
3932  
3933  
3934  
3935  
3936  
3937  
3938  
3939  
3940  
3941  
3942  
3943  
3944  
3945  
3946  
3947  
3948  
3949  
3950  
3951  
3952  
3953  
3954  
3955  
3956  
3957  
3958  
3959  
3960  
3961  
3962  
3963  
3964  
3965  
3966  
3967  
3968  
3969  
3970  
3971  
3972  
3973  
3974  
3975  
3976  
3977  
3978  
3979  
3980  
3981  
3982  
3983  
3984  
3985  
3986  
3987  
3988  
3989  
3990  
3991  
3992  
3993  
3994  
3995  
3996  
3997  
3998  
3999  
4000

T

IN

GARDE

ROSECRAN

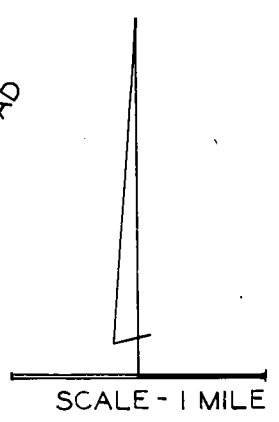


TO RIVERA QUAD

TO NORWALK QUAD

# SOUTH GATE QUAD

LOS ANGELES COUNTY ROAD DEPARTMENT  
 SURVEY SECTION FIELD ENGINEERING DIVISION



| QUAD-YEAR         | ELEV    | DESCRIPTION<br>(INCLUDE QUAD AND YEAR IN DESCRIPTION)  | BM NUMBER |
|-------------------|---------|--|-----------|
| SO GATE<br>(1960) | 129.071 | L+SPK IN W CB EASTERN AVE 77FT± S C/L GAGE ST  | SY 1      |
| SO GATE<br>(1960) | 129.221 | L+SPK N EDGE PVMT 12FT± N C/L INT GAGE AVE +<br>AJAX AVE   | SY 3      |
| SO GATE<br>(1960) | 129.789 | L+SPK PVMT 12FT± S C/L GAGE AVE 500FT± E C/L<br>AJAX AVE   | SY 4      |
| SO GATE<br>(1960) | 129.826 | L+SPK PVMT 12FT± N C/L GAGE AVE 500FT± E C/L<br>AJAX AVE   | SY 5      |
| SO GATE<br>(1960) | 129.034 | L+SPK PVMT 12FT S C/L GAGE AVE 2FT E C/L<br>COLMAR AVE   | SY 6      |
| SO GATE<br>(1960) | 129.036 | L+SPK PVMT 12FT N C/L GAGE AVE 2FT E C/L<br>COLMAR AVE   | SY 7      |
| SO GATE<br>(1960) | 128.317 | L+BN 1FT± S BCR @ SW COR GAGE AVE + JABONERIA<br>RD 58FT± S + 20FT± W C/L INT                    | SY 8A     |
| SO GATE<br>(1960) | 129.282 | L+T 2FT± E BCR @ SE COR GAGE AVE + JABONERIA<br>RD 28FT± S + 47 FT ± E C/L INT                   | SY 9A     |
| SO GATE<br>(1960) | 130.613 | L+SPK PVMT 12FT± N C/L GAGE AVE 50FT± E C/L<br>DARWELL AVE                                       | SY 10     |
| SO GATE<br>(1960) | 134.592 | L+N S END 2ND GAS ISLAND (ABANDONED) 50FT± S +<br>80 FT± E C/L INT GAGE AVE + GARFIELD AVE       | SY 12     |
| SO GATE<br>(1960) | 133.275 | BOLT @ C/L FOSTER BRIDGE RD 146.39 E INT PERRY<br>RD   | SY 14     |
| SO GATE<br>(1960) | 127.210 | L+N E CB PERRY RD 30FT± S CB RET @ SE COR<br>LOVELAND ST + PERRY RD                              | SY 15A    |
| SO GATE<br>(1960) | 123.445 | L+SPK N END OF GAS 55FT± S C/L FLORENCE PL 60FT±<br>W C/L PERRY RD                               | SY 17     |
| SO GATE<br>(1960) | 121.981 | L+SPK WK 43FT± S C/L FRY ST PROD 30FT± W C/L<br>PERRY IN FRONT OF CHURCH ENT                     | SY 18     |
| SO GATE<br>(1960) | 121.938 | L+SPK S END GAS ISLAND 52FT± E C/L PERRY RD +<br>60FT± N C/L FLORENCE AVE                        | SY 19     |
| SO GATE<br>(1960) | 120.499 | L+SPK WK 60FT± S C/L FLORENCE AVE + 50FT± E C/L<br>GARFIELD AVE                                  | SY 21     |
| SO GATE<br>(1960) | 120.818 | L+SPK WK 3-FT± E C/L TOLER AVE + 105FT± S C/L<br>FLORENCE AVE                                    | SY 22     |
| SO GATE<br>(1960) | 120.836 | L+T W CB IRA AVE NR S END CB RET @ SW COR<br>FLORENCE AVE  | SY 25     |
| SO GATE<br>(1960) | 123.056 | L+SPK STATION DRWY 45FT± W C/L AJAX AVE + 55FT±<br>N C/L FLORENCE AVE                            | SY 28     |
| SO GATE<br>(1960) | 122.177 | L+SPK E CB EASTERN AVE NR END CB RET @ NE COR<br>FLORENCE AVE                                    | SY 29     |
| SO GATE<br>(1960) | 121.211 | L+SPK WK 65FT± S/O C/L FLORENCE AVE 30FT± E/O<br>C/L EMIL ST                                     | SY 32     |
| SO GATE<br>(1960) | 125.104 | SPK + L NE BASE LEG TRANS TOWER NO 259D7 ON E<br>SIDE RIO HONDO RIVER 75FT± S/O C/L FLORENCE AVE | SY 34     |
| SO GATE<br>(1960) | 124.078 | L+N PVMT C/L OLD RIVER SCHOOL RD 50FT± S/O C/L<br>FLORENCE AVE                                   | SY 35     |

| QUAD-YEAR          | ELEV                 | DESCRIPTION<br>(INCLUDE QUAD AND YEAR IN DESCRIPTION)   | BM NUMBER |
|--------------------|----------------------|---|-----------|
| SO GATE<br>(1960)  | 126.615              | RDBM TAG S CB 1FT± W/O BCR @ SW COR FLORENCE AVE + RIVES AVE 38FT± S + 55FT± W/O C/L INT                          | SY 37A    |
| BASELINE<br>(1955) | 122.524              | L+BN 17FT± W CB RET SW COR HARPER AVE + PARAMOUNT BLVD  | SY 40A    |
| BASELINE<br>(1955) | 121.079              | L+SPK 5FT± S CB RET SW COR 7TH ST + PARAMOUNT BLVD  | SY 41     |
| BASELINE<br>(1955) | 118.719              | L+SPK 13FT± S CB RET SW COR 6TH ST + PARAMOUNT BLVD   | SY 42     |
| BASELINE<br>(1955) | 117.993              | L+SPK 8FT± N CB RET NW COR 5TH ST + PARAMOUNT BLVD  | SY 43     |
| BASELINE<br>(1955) | 117.502              | L+SPK 12FT± N CB RET NW COR 4TH PL + PARAMOUNT BLVD   | SY 45     |
| BASELINE<br>(1955) | 116.813              | L+SPK 6FT± S CB RET SW COR 3RD ST + PARAMOUNT BLVD  | SY 46     |
| BASELINE<br>(1955) | 116.473              | L+SPK 18FT± N CB RET NW COR 2ND ST + PARAMOUNT BLVD   | SY 47     |
| BASELINE<br>(1955) | 116.211              | L+T CTR CB RET NE COR FIRESTONE BLVD + PARAMOUNT BLVD   | SY 48A    |
| BASELINE<br>(1955) | 72.324               | L+T E CB ALAMEDA ST 50FT± N C/L ROSECRANS BLVD  | SY 169A   |
| BASELINE<br>(1955) | 73.731               | 4.5 IN IP WITH L+T 6IN BACK WK ON SE COR PARAMOUNT BLVD + ROSECRANS AVE 244FT± S C/L 50FT± E C/L INT MKD (LAC 32) | SY 288A   |
| BASELINE<br>(1955) | 77.795               | L+BN IN SE COR OF SIGNAL BASE NO 130 ON SE COR ROSECRANS AVE + PARAMOUNT BLVD 41FT± S + 65FT± E C/L INT           | SY 289A   |
| SO GATE<br>(1960)  | <b>OUT</b><br>94.519 | L+T CONC DRWY 43FT± S C/L ROSECRANS AVE 1FT± E OF W EDGE DRWY TO HSE NO 7202                                      | SY 297    |
| SO GATE<br>(1960)  | 94.314               | L+T @ ECR @ NW COR IMPERIAL HWY + MADGE AVE   | SY 373    |
| SO GATE<br>(1960)  | 93.800               | L+T CB 1FT± N ECR @ NW COR IMPERIAL HWY + CASSINA AVE   | SY 374    |
| SO GATE<br>(1960)  | 93.324               | L+T CB 1FT± N ECR @ NW COR IMPERIAL HWY + AMERY AVE   | SY 375    |
| SO GATE<br>(1960)  | 92.468               | L+T CB 1FT± N ECR @ NE COR IMPERIAL HWY + BEAK AVE  | SY 376    |
| SO GATE<br>(1960)  | 93.292               | CE TAG 9FT± S BCR @ NE COR IMPERIAL HWY + OLD RIVER SCHOOL RD 56FT± N/O + 34FT± E/O C/L INT                       | SY 377A   |
| SO GATE<br>(1960)  | 96.008               | L+T CB 1FT± N ECR NW COR IMPERIAL HWY + AMBL ENT TO RANCHO LOS AMIGOS   | SY 378A   |
| SO GATE<br>(1960)  | 97.467               | CS TAG N CB 2FT± W BCR @ NW COR IMPERIAL HWY + RIVES AVE 40FT± N/O + 47FT± W/O C/L INT                            | SY 379A   |
| SO GATE<br>(1960)  | 98.144               | FD CS BRASS CAP FLUSH AT PROP COR OF IMPERIAL PARK ON NE COR IMPERIAL HWY + RIVES AVE 50FT± N + 30FT± E/O C/L INT | SY 380A   |
| SO GATE<br>(1960)  | 128.073              | L+N E CB EASTERN AVE 3FT± N CB RET @ NE COR LOVELAND ST   | SY 664    |



| QUAD-YEAR          | ELEV    | DESCRIPTION<br>(INCLUDE QUAD AND YEAR IN DESCRIPTION)                       | BM NUMBER |
|--------------------|---------|---|-----------|
| SO GATE<br>(1960)  | 125.297 | L+N E CB EASTERN AVE 2FT± N CB RET @ NE COR<br>LUBEC ST                     | SY 665    |
| SO GATE<br>(1960)  | 123.040 | L+N E CB EASTERN AVE 2FT± N CB RET @ NE COR<br>LUDELL ST                    | SY 666    |
| SO GATE<br>(1960)  | 120.170 | L+T CTR CB RET @ NW COR EASTERN AVE + FRY ST                                | SY 667A   |
| SO GATE<br>(1960)  | 119.073 | L+N W CB EASTERN AVE NR N END CB RET @ NW COR<br>LIVE OAK ST                | SY 668    |
| SO GATE<br>(1960)  | 117.182 | L+T CTR CB RET @ SW COR EASTERN AVE + PRIORY ST                             | SY 669    |
| SO GATE<br>(1960)  | 115.756 | L+T CTR CB RET @ NE COR EASTERN AVE + CLARA ST                              | SY 670    |
| SO GATE<br>(1960)  | 113.177 | L+T W CB EASTERN AVE 6FT± N CB RET @ NW COR<br>GOTHAM ST                    | SY 671    |
| SO GATE<br>(1960)  | 112.441 | L+T W CB EASTERN AVE 6FT± S CB RET @ SW COR<br>COMPTON JABONERIA RD         | SY 672    |
| SO GATE<br>(1960)  | 110.772 | L+T E CB EASTERN AVE 8FT± S CB RET @ SE COR<br>MULLER ST                    | SY 673    |
| SO GATE<br>(1960)  | 110.438 | L+N E CB EASTERN AVE 6FT± S CB RET @ SE COR<br>CECILIA ST                   | SY 674    |
| SO GATE<br>(1960)  | 110.023 | L+T E CB EASTERN AVE 8FT± S CB RET @ SE COR<br>FOSTORIA ST                  | SY 675    |
| SO GATE<br>(1960)  | 109.160 | L+T W CB EASTERN AVE C/L PROD SHULL ST                                      | SY 676    |
| BASELINE<br>(1955) | 108.639 | L+N IN WK 50FT± N C/L COLE ST 50FT± W C/L<br>PARAMOUNT BLVD                 | SY 773A   |
| BASELINE<br>(1955) | 107.723 | L+N NR N END CB RET @ NW COR PARAMOUNT BLVD +<br>ALBIA ST                   | SY 774A   |
| BASELINE<br>(1955) | 106.320 | CUT SPK CONC PVMT 14FT± W C/L PARAMOUNT BLVD ON<br>C/L PROD ALAMEDA ST      | SY 775A   |
| BASELINE<br>(1955) | 106.272 | L+N CTR CB RET @ SW COR MELVA ST + PARAMOUNT<br>BLVD                        | SY 776A   |
| BASELINE<br>(1955) | 105.113 | L+T 14FT± E C/L PARAMOUNT BLVD 11FT± N C/L<br>SPRINGER ST PROD IN CONC PVMT | SY 777A   |
| BASELINE<br>(1955) | 104.182 | L+T IN CONC 14FT± E C/L PARAMOUNT BLVD 4FT±N<br>C/L QUILL DR PROD           | SY 778A   |
| BASELINE<br>(1955) | 90.673  | L+N NR N END CB RET @ NE COR PARAMOUNT BLVD +<br>ADOREE AVE                 | SY 779A   |
| BASELINE<br>(1955) | 89.399  | SPK + W @ INT PARAMOUNT BLVD + DEVENIR AVE                                  | SY 780A   |
| BASELINE<br>(1955) | 87.190  | ST + W @ INT PARAMOUNT BLVD + COUNTRY FARM DR                               | SY 781A   |
| BASELINE<br>(1955) | 85.993  | SPK + W @ INT PARAMOUNT BLVD + PRICILLA AVE                                 | SY 782A   |
| BASELINE<br>(1955) | 82.802  | CS MON 16FT± W + 5FT± S INT PARAMOUNT BLVD +<br>GARDENDALE ST               | SY 783    |

| QUAD-YEAR          | ELEV    | DESCRIPTION<br>(INCLUDE QUAD AND YEAR IN DESCRIPTION)  | BM NUMBER |
|--------------------|---------|--|-----------|
| BASELINE<br>(1955) | 83.155  | L+T IN E CB PARAMOUNT BLVD 3FT± S OF CB RET @ SE COR PARAMOUNT BLVD + MCKINLEY AVE                                 | SY 784A   |
| BASELINE<br>(1955) | 82.722  | L+T IN E CB PARAMOUNT BLVD 21FT± N OF CB RET @ NE COR PARAMOUNT BLVD + ALHAMBRA AVE                                | SY 785A   |
| BASELINE<br>(1955) | 81.564  | L+T IN N CB GOLDEN AVE 4FT± W OF CB RET @ NE COR PARAMOUNT BLVD + GOLDEN AVE                                       | SY 786B   |
| BASELINE<br>(1955) | 81.250  | L+T NEAR CTR OF CB RET @ SE COR PARAMOUNT BLVD + GOLDEN AVE  | SY 787B   |
| BASELINE<br>(1955) | 80.842  | L+SPK E CB PARAMOUNT BLVD 50FT± S C/L HARDING AVE PROD   | SY 788B   |
| BASELINE<br>(1955) | 80.403  | L+T IN E CB PARAMOUNT BLVD 35FT± N OF C/L LINCOLN AVE PROD   | SY 789A   |
| BASELINE<br>(1955) | 79.708  | L+T IN E CB PARAMOUNT BLVD 2FT S OF CB RET @ NE COR PARAMOUNT BLVD + FLORENCE AVE                                  | SY 790A   |
| BASELINE<br>(1955) | 78.047  | L+T IN CB RET @ NE COR PARAMOUNT BLVD + CENTURY BLVD 10FT± S OF BCR ON PARAMOUNT BLVD                              | SY 791A   |
| BASELINE<br>(1955) | 76.586  | BT SPK 1FT± S CB RET @ SW COR PARAMOUNT BLVD + PEARLE ST   | SY 792A   |
| BASELINE<br>(1955) | 75.825  | BT SPK BCR @ SW COR PARAMOUNT BLVD + HOWE ST   | SY 793A   |
| BASELINE<br>(1955) | 76.617  | BT SPK CTR CB RET @ NW COR PARAMOUNT BLVD + ROSE ST  | SY 794A   |
| BASELINE<br>(1955) | 71.848  | L+T W CB PARAMOUNT BLVD C/L PROD 3RD ST  | SY 795A   |
| BASELINE<br>(1955) | 72.955  | BT SPK 1FT± S CB RET SE COR PARAMOUNT BLVD + 1ST ST  | SY 796A   |
| BASELINE<br>(1955) | 72.657  | CS MON 17FT± W INT PARAMOUNT BLVD + COMPTON BLVD   | SY 797A   |
| BASELINE<br>(1955) | 72.712  | L+T CTR CB RET SE COR PARAMOUNT BLVD + ADAMS ST  | SY 798    |
| BASELINE<br>(1955) | 68.962  | L+T W CB PARAMOUNT BLVD 2FT± N CB RET @ NW COR MADISON ST + PARAMOUNT BLVD   | SY 799A   |
| SO GATE<br>(1960)  | 135.349 | L+BN E CB EASTERN AVE 10FT± N OF LA JCT RR SIDING NR S END CB  | SY 840A   |
| BASELINE<br>(1955) | 158.084 | U S E D L+N W END N HDWL LA RIVER BRIDGE ON SLAUSON AVE  | SY 855A   |
| SO GATE<br>(1960)  | 78.878  | CUT SPK CONC PVMT 9FT± W C/L GARFIELD AVE 2FT± N OF N RAIL OF PERR GARFIELD AVE + SANTA ANA LINE HOLLYDALE STATION | SY 1090   |
| BASELINE<br>(1955) | 126.051 | SET RDBM TAG N CB 1FT± E BCR @ NE COR PARAMOUNT BLVD + FLORENCE AVE 40FT± N + 68FT± E C/L INT                      | SY 1299A  |
| SO GATE<br>(1960)  | 121.188 | L+T @ E END GAS ISLAND 70FT± S C/L FLORENCE AVE 70FT± @ 90 DEGREES FROM COMPTON JABONERIA RD                       | SY 1377   |
| SO GATE<br>(1960)  | 112.799 | L+T 15FT± N CB RET @ S EDGE CATCH BASIN @ NE COR COMPTON JABONERIA RD + EASTERN AVE                                | SY 1385   |
| BASELINE<br>(1955) | 124.713 | CS BR CAP CONC MON C/L INT PARAMOUNT BLVD + FLORENCE AVE   | SY 1386   |

| QUAD-YEAR          | ELEV    | DESCRIPTION<br>(INCLUDE QUAD AND YEAR IN DESCRIPTION)   | BM NUMBER |
|--------------------|---------|---|-----------|
| BASELINE<br>(1955) | 127.454 | L+BN CTR CB RET SE COR LUBEC ST + PARAMOUNT BLVD  | SY 1387A  |
| BASELINE<br>(1955) | 127.674 | L+BN CTR CB RET NE COR LUBEC ST + PARAMOUNT BLVD  | SY 1388A  |
| BASELINE<br>(1955) | 130.641 | L+BN 2FT± FROM END W CB FRONT HSE NO 9603<br>PARAMOUNT BLVD   | SY 1389   |
| BASELINE<br>(1955) | 132.090 | L+T CONC CB @ BCR SE COR SUVA ST + PARAMOUNT<br>BLVD  | SY 1390   |
| BASELINE<br>(1955) | 134.473 | L+T CONC CB @ BCR SE COR GALLATIN SCHOOL HOUSE<br>RD + PARAMOUNT BLVD   | SY 1391   |
| BASELINE<br>(1955) | 134.492 | L+T CONC CB @ BCR SW COR GALLATIN SCHOOL HOUSE<br>RD + PARAMOUNT BLVD   | SY 1392   |
| BASELINE<br>(1955) | 138.713 | SQ HD SPK W CB OF SERVICE RD OF PARAMOUNT<br>BLVD 12FT± N C/L PROD BROOKGREEN RD  | SY 1394A  |
| BASELINE<br>(1955) | 139.675 | FD L+BRAD E CB 0.5FT± S BCR @ SE COR PARAMOUNT<br>BLVD + VISTA DEL ROSA SERVICE ISLAND 40FT± E +<br>50FT± S C/L INT   | SY 1395A  |
| BASELINE<br>(1955) | 142.240 | CS MON IN WELL 8IN DN ON C/L TELEGRAPH RD<br>20FT± WLY C/L PARAMOUNT BLVD MKD (BELL K4 1941)  | SY 1397A  |
| BASELINE<br>(1955) | 143.927 | RAM NAIL IN N CB TELEGRAPH RD 16FT± E/O CB END<br>38FT± N/O C/L TELEGRAPH RD + 110FT± W/O C/L<br>CRIDER AVE   | SY 1400A  |
| BASELINE<br>(1955) | 145.817 | RAM SET NAIL IN CONC ISLAND @ CTR OF DRWY TO<br>KAYNAR CO BLDG 7875 42FT± N OF C/L TELEGRAPH RD<br>+ 4IN± E OF C/L INT SLAUSON AVE + TELEGRAPH RD<br>300FT± E OF E END BRIDGE 53-212 OVER RIO HONDO | SY 1401A  |
| BASELINE<br>(1955) | 151.909 | L+T IN N CB TELEGRAPH RD 4FT± E OF CB RET @ NE<br>COR SLAUSON AVE 40 FT± N + 105FT± E OF C/L INT  | SY 1402A  |
| BASELINE<br>(1955) | 72.509  | L+T CONC PVMT @ C/L INT COMPTON BLVD + COLORADO<br>AVE  | SY 1514B  |
| BASELINE<br>(1955) | 73.034  | L+BN E END GAS ISLAND 75FT± W + 52FT± S C/L INT<br>COMPTON BLVD + VERMONT AVE   | SY 1515A  |
| BASELINE<br>(1955) | 69.686  | L+BN 63FT± E + 52FT± S C/L INT GARFIELD AVE +<br>COMPTON BLVD CONC SERVICE STA YARD   | SY 1518   |
| BASELINE<br>(1955) | 70.989  | L+T W END CONC SLAB 100FT± N + 60FT± E C/L INT<br>GARFIELD AVE + COMPTON BLVD @ FARMER BOYS MKT   | SY 1519A  |
| BASELINE<br>(1955) | 70.305  | L+T W CONC STRIP 53FT± N C/L COMPTON BLVD AT<br>HSE 7243  | SY 1520A  |
| BASELINE<br>(1955) | 69.747  | L+BN N CB COMPTON BLVD 80FT± W C/L INT TEXACO<br>AVE 20FT± N C/L COMPTON BLVD   | SY 1521A  |
| BASELINE<br>(1955) | 70.528  | SPK W CB SAN MARINO AVE 13FT± N BCR @ NW COR<br>SAN MARINO AVE + COMPTON BLVD (MKD KT-5)  | SY 1522A  |
| BASELINE<br>(1955) | 70.100  | L+T E EDGE CONC WK 65FT± E + 40FT± S C/L INT<br>COMPTON BLVD + ORANGE AVE SE COR  | SY 1523A  |
| BASELINE<br>(1955) | 69.609  | L+S W CB ORANGE AVE 13FT± N BCR @ NW COR COMPTON<br>+ ORANGE AVE  | SY 1524A  |
| SO GATE<br>(1960)  | 71.476  | RD MON @ C/L INT OF ORANGE AVE + ROSECRANS AVE  | SY 1533A  |

| QUAD-YEAR          | ELEV    | DESCRIPTION<br>(INCLUDE QUAD AND YEAR IN DESCRIPTION)  | BM NUMBER |
|--------------------|---------|--|-----------|
| BASELINE<br>(1955) | 135.775 | L+T CTR CB RET SE COR EASTERN AVE + SLAUSON AVE  | SY 1558   |
| BASELINE<br>(1955) | 140.217 | L+T N CB SLAUSON AVE @ WLY END OF CURVE 42FT# N C/L SLAUSON AVE + 300FT# E BOXFORD AVE                               | SY 1561A  |
| BASELINE<br>(1955) | 140.294 | L+T CONC WK TO (THOR POWER TOOL CO) OFFICE BLDG NO 6200 48FT# S C/L SLAUSON AVE @ WLY END CURVE 300FT# E BOSFORD AVE | SY 1562A  |
| BASELINE<br>(1955) | 142.545 | L+LS 1742 TAG W CB MALT AVE 1FT# N CB RET @ NW COR SLAUSON AVE 50FT# S + 26FT# W C/L INT                             | SY 1563A  |
| BASELINE<br>(1955) | 146.107 | L+T S CB SLAUSON AVE @ WLY END OF CURVE 38FT# S C/L SLAUSON AVE + 620FT# E MALT AVE                                  | SY 1564A  |
| BASELINE<br>(1955) | 148.466 | L+T 3FT# E CTR CB RET @ SE COR SLAUSON AVE + GARFIELD AVE 41FT# S + 53FT# E C/L INT                                  | SY 1565   |
| BASELINE<br>(1955) | 148.687 | L+T N CB SLAUSON AVE 2FT# E CB RET @ NE COR GARFIELD AVE 38FT# N + 65FT# E C/L INT                                   | SY 1566   |
| BASELINE<br>(1955) | 152.781 | L+BN S CB SLAUSON AVE 3FT# N PP NO 666256E ON LINE W/CHAIN LINK FENCE @ ELY P/L APEX STEEL CO 0.4MI# E GARFIELD AVE  | SY 1567A  |
| BASELINE<br>(1955) | 159.464 | L+T RETAINING WALL N SIDE SLAUSON AVE FRONT OLIVE MEMORIAL PK 50FT# N C/L SLAUSON AVE 5FT# W OF E P/L OF PARK        | SY 1568   |
| BASELINE<br>(1955) | 158.337 | RD MON IN WELL W/COVER ON C/L SLAUSON AVE 25FT# W C/L GREENWOOD AVE  | SY 1569   |
| BASELINE<br>(1955) | 159.426 | L+T S CB 3FT# E BCR @ SE COR SLAUSON AVE + GREENWOOD AVE   | SY 1570   |
| BASELINE<br>(1955) | 158.115 | CS MON IN WELL C/L INT TODD AVE + SLAUSON AVE  | SY 1571   |
| BASELINE<br>(1955) | 159.148 | L+BN 5FT# S BCR @ SW COR TODD AVE + SLAUSON AVE  | SY 1572   |
| BASELINE<br>(1955) | 152.510 | L+T IN S CB TELEGRAPH RD 5FT6IN# E/O CB RET @ SE COR SLAUSON AV 40FT# S + 48FT# E OF C/L INT                         | SY 1573A  |
| BASELINE<br>(1955) | 157.196 | TOP RD MON IN WELL C/L INT GAGE AVE + SLAUSON AVE  | SY 1574A  |
| SO GATE<br>(1960)  | 149.854 | RD MON IN WELL (POSSIBLE PI) 150FT# S C/L PERR ON GAGE AVE   | SY 1575   |
| SO GATE<br>(1960)  | 146.784 | CS MON IN WELL C/L INT ZINDELL AVE + GAGE AVE  | SY 1576   |
| SO GATE<br>(1960)  | 145.477 | CS MON IN WELL C/L INT KUHL DR + GAGE AVE  | SY 1578   |
| SO GATE<br>(1960)  | 145.882 | CS MON IN WELL C/L INT LANTO ST + GAGE AVE   | SY 1580   |
| SO GATE<br>(1960)  | 145.209 | CS MON IN WELL PI OF CURVE 30FT# W C/L INT AGRA ST + GAGE AVE  | SY 1581   |
| SO GATE<br>(1960)  | 146.228 | L+N CONC WK DEL RIO SANITORIUM NO 7004 GAGE AVE NEAR CONC PILLAR OF SMALL GATE                                       | SY 1582   |
| SO GATE<br>(1960)  | 141.455 | RDBM TAG S CB 1FT# E BCR @ SE COR GAGE AVE + CHALET DR 28FT# S + 45FT# E C/L INT                                     | SY 1584   |

| QUAD-YEAR         | ELEV    | DESCRIPTION<br>(INCLUDE QUAD AND YEAR IN DESCRIPTION)   | BM NUMBER |
|-------------------|---------|---|-----------|
| SO GATE<br>(1960) | 141.682 | L+BN 1FT± E BCR E DRWY GAGE DRIVE-IN THEATRE<br>70FT± W C/L INT GAGE AVE + CHALET DR N SID E<br>GAGE AVE        | SY 1585   |
| SO GATE<br>(1960) | 137.465 | CS MON IN WELL (APPROX) C/L INT PERRY RD + GAGE<br>AVE  | SY 1588   |
| SO GATE<br>(1960) | 137.252 | L+T E CB RET ENT MOUNT CARMEL CEMETERY NO 6501<br>GAGE AVE 25FT± N C/L GAGE AVE                                 | SY 1589A  |
| SO GATE<br>(1960) | 135.127 | L+T NW COR CONC WK SE COR PERRY RD + FOSTER<br>BRIDGE BLVD FRONT BLDG NO 6501                                   | SY 1591   |
| SO GATE<br>(1960) | 141.335 | L+BN IN CONC ABUT NE COR LA RIVER BRIDGE ON<br>FLORENCE AVE   | SY 1712   |
| SO GATE<br>(1960) | 141.503 | L+BN 1FT± E END OF BRIDGE ON N CB @ NW COR OF<br>LA RIVER BRIDGE ON FLORENCE AVE                                | SY 1713   |
| SO GATE<br>(1960) | 141.572 | L+BN 1FT± E OF END OF BRIDGE ON S CB @ SW COR<br>LA RIVER ON FLORENCE AVE                                       | SY 1714   |
| SO GATE<br>(1960) | 123.175 | L+B 8FT± W BCR @ NE COR WALKER AVE + FLORENCE<br>AVE  | SY 1715   |
| SO GATE<br>(1960) | 125.662 | L+B 6FT± E BCR @ NW COR SHERMAN WAY + FLORENCE<br>AVE   | SY 1717   |
| SO GATE<br>(1960) | 126.083 | L+B CTR CB RET @ NE COR WILCOX AVE + FLORENCE<br>AVE  | SY 1718   |
| SO GATE<br>(1960) | 126.316 | L+B 8FT± W BCR SE COR WILCOX AVE + FLORENCE AVE   | SY 1719   |
| SO GATE<br>(1960) | 126.627 | L+BN W CB HELIOTROPE AVE 67FT± N C/L<br>FLORENCE AVE  | SY 1720   |
| SO GATE<br>(1960) | 130.711 | L+BN E CB KING AVE 77FT± N C/L FLORENCE AVE   | SY 1723   |
| SO GATE<br>(1960) | 134.347 | L+BN @ BCR NW COR WOODWARD AVE + FLORENCE AVE<br>80FT± N C/L FLORENCE AVE                                       | SY 1724   |
| SO GATE<br>(1960) | 132.291 | L+T 3FT ± S CTR CB RET @ SE COR ATLANTIC BLVD +<br>FLORENCE AVE   | SY 1725   |
| SO GATE<br>(1960) | 132.435 | L+T CTR CB RET SW COR ATLANTIC BLVD + FLORENCE<br>AVE   | SY 1726   |
| SO GATE<br>(1960) | 135.287 | L+T 10FT± N BCR @ NW COR FISHBURN AVE +<br>FLORENCE AVE   | SY 1729   |
| SO GATE<br>(1960) | 139.521 | L+T 4FT± E BCR @ NE COR FLORENCE AVE + CORONA<br>AVE  | SY 1731   |
| SO GATE<br>(1960) | 138.882 | L+T 1FT± N BCR @ NW COR SAN LUIS ST + FLORENCE<br>AVE   | SY 1732   |
| SO GATE<br>(1960) | 138.965 | L+BN 1 FT± W BCR SW COR FLORENCE AVE + BEAR AVE   | SY 1734   |
| SO GATE<br>(1960) | 140.871 | CSMON IN WELL 12IN DN @ OR NR C/L INT FLORENCE<br>AVE + CALIFORNIA AVE MKD (WATTS L-4)                          | SY 1735A  |
| SO GATE<br>(1960) | 141.540 | RR SPK N CB 36FT± W BCR @ NW COR FLORENCE AVE +<br>CALIFORNIA AVE 36FT± N + 65FT± W C/L INT CB MKD<br>(4D 2009) | SY 1736A  |

| QUAD-YEAR         | ELEV    | DESCRIPTION<br>(INCLUDE QUAD AND YEAR IN DESCRIPTION)                                    | BM NUMBER |
|-------------------|---------|--|-----------|
| SO GATE<br>(1960) | 138.016 | L+B 13FT# N BCR E CB SALT LAKE AVE +<br>WALNUT ST NW COR                                 | SY 1737   |
| SO GATE<br>(1960) | 136.985 | L+SPK IN GAS ISLAND SE COR LIVE OAK ST + SALT<br>LAKE AVE 49FT# E 90FT# S C/L INT        | SY 1738   |
| SO GATE<br>(1960) | 133.822 | L+T S CB 15FT# S C/L FLOWER ST 85FT# SE C/L INT<br>FLOWER ST + SALT LAKE AVE             | SY 1739   |
| SO GATE<br>(1960) | 130.404 | L+T N CB CLARA ST 45FT# E BCR FRONT HSE NO<br>3907 (CLARA ST)                            | SY 1740   |
| SO GATE<br>(1960) | 130.300 | L+T S CB CLARA ST 2FT# E BCR FRONT HSE NO 3907   | SY 1741   |
| SO GATE<br>(1960) | 129.853 | L+BN 3FT# FROM END N CB @ NW COR OTIS AVE +<br>CLARA ST 50FT# N C/L INT                  | SY 1742   |
| SO GATE<br>(1960) | 129.548 | L+BN CB 53FT# E + 20FT# N C/L INT CLARA ST +<br>OTIS AVE 3FT# FROM END OF CB             | SY 1743   |
| SO GATE<br>(1960) | 131.251 | L+BN N CB CLARA ST FRONT OF HSE NO 4251  | SY 1744   |
| SO GATE<br>(1960) | 127.535 | L+BN 1.5FT# W BCR NW COR CLARA ST + ATLANTIC<br>BLVD                                     | SY 1746   |
| SO GATE<br>(1960) | 127.824 | L+BN E BCR SE COR CLARA ST + ATLANTIC BLVD   | SY 1747   |
| SO GATE<br>(1960) | 129.760 | L+BN N CB CLARA ST FRONT HSE NO 4707 850FT# E<br>ATLANTIC BLVD                           | SY 1748   |
| SO GATE<br>(1960) | 125.613 | L+BN N CB CLARA ST FRONT HSE NO 4845 1700FT# S<br>ATLANTIC BLVD                          | SY 1749   |
| SO GATE<br>(1960) | 119.469 | L+BN N CB CLARA ST FRONT HSE NO 5125 800FT# E<br>WILCOX AVE                              | SY 1752   |
| SO GATE<br>(1960) | 119.576 | L+BN N CB CLARA ST 1FT# E BCR OF CB OF W<br>APPROACH TO BRIDGE OVER LA RIV               | SY 1753   |
| SO GATE<br>(1960) | 135.946 | L+T S CB CLARA ST 40FT# W OF W END OF BRIDGE<br>OVER LA RIV                              | SY 1754   |
| SO GATE<br>(1960) | 137.135 | L+TAG (USED NO 2301) IN CONC ABUT @ NW COR<br>BRIDGE OVER LA RIV @ CLARA ST              | SY 1755   |
| SO GATE<br>(1960) | 137.324 | RD BR CAP IN CONC ABUT @ NE COR BRIDGE OVER LA<br>RIV @ CLARA ST                         | SY 1756   |
| SO GATE<br>(1960) | 137.332 | RD BR CAP IN CONC ABUT @ SE COR BRIDGE OVER LA<br>RIV @ CLARA ST                         | SY 1757   |
| SO GATE<br>(1960) | 120.967 | L+T 2FT# N END CB RET SW COR VIA JAQUELITAS +<br>OLD RIVER SCHOOL RD                     | SY 1845   |
| SO GATE<br>(1960) | 119.626 | L+T S CB VIA AMORITA 2FT# W BCR @ SW COR VIA<br>AMORITA + OLD RIVER SCHOOL RD            | SY 1846   |
| SO GATE<br>(1960) | 117.643 | L+T E CB OLD RIVER SCHOOL RD 1FT# N CB RET @<br>NE COR OLD RIVER SCHOOL RD + MULLER ST   | SY 1847   |
| SO GATE<br>(1960) | 115.913 | L+T 4FT# N CB RET @ NE COR OLD RIVER SCHOOL RD<br>+ FOSTORIA ST                          | SY 1848   |
| SO GATE<br>(1960) | 114.700 | L+T E CB OLD RIVER SCHOOL RD 6FT# N CB RET @ NE<br>COR OLD RIVER SCHOOL RD + 4TH PL TO E | SY 1849   |

| QUAD-YEAR          | ELEV    | DESCRIPTION<br>(INCLUDE QUAD AND YEAR IN DESCRIPTION)   | BM NUMBER |
|--------------------|---------|---|-----------|
| SO GATE<br>(1960)  | 113.815 | L+T E CB OLD RIVER SCHOOL RD 7FT± N CB RET @ NE COR OLD RIVER SCHOOL RD + 3RD ST TO E                                 | SY 1850   |
| SO GATE<br>(1960)  | 111.982 | L+T 18FT± NLY OF CB RET @ SW COR OLD RIVER SCHOOL RD + DINWIDDIE ST   | SY 1851   |
| SO GATE<br>(1960)  | 111.674 | RDBM TAG W CB 1FT± N CS ON NW COR OLD RIVER SCHOOL RD + FIRESTONE BLVD 80 FT± N + 28 FT± W C/L INT                    | SY 1852A  |
| SO GATE<br>(1960)  | 111.895 | CE TAG IN CB ON NE COR OLD RIVER SCHOOL RD + FIRESTONE BLVD 72FT± N + 28FT± E C/L INT                                 | SY 1853A  |
| SO GATE<br>(1960)  | 107.636 | L+T APPROX CTR RET @ NE COR OLD RIVER SCHOOL RD + ADWEN ST  | SY 1854   |
| SO GATE<br>(1960)  | 106.268 | L+T 1FT± N CB RET @ NE COR LUXOR ST + OLD RIVER SCHOOL RD   | SY 1855   |
| SO GATE<br>(1960)  | 104.971 | L+BN CONC BASE (76) SIGN OF SERVICE STA @ NE COR OLD RIVER SCHOOL RD + STEWART + GRAY RD                              | SY 1856   |
| SO GATE<br>(1960)  | 104.481 | RDBM TAG CB 3FT± W/O BCR @ SE COR STEWART + GRAY RD + OLD RIVER SCHOOL RD 25FT± S/O + 50FT± E/O C/L INT               | SY 1857A  |
| SO GATE<br>(1960)  | 105.748 | L+T SLY END ISLAND OF SERVICE STA @ SW COR OLD RIVER SCHOOL RD + STEWART + GRAY RD                                    | SY 1858   |
| SO GATE<br>(1960)  | 102.320 | L+T S EDGE CONC DRWY HSE 12006 80FT± S C/L LAURA ST @ SE COR OLD RIVER SCHOOL RD + LAURA ST                           | SY 1859   |
| SO GATE<br>(1960)  | 99.570  | L+T CTR RET @ NE COR OLD RIVER SCHOOL RD + RUNDELL ST   | SY 1860   |
| SO GATE<br>(1960)  | 98.770  | L+T S EDGE CONC DRWY 40FT± E C/L OLD RIVER SCHOOL ROAD TO HSE 12320   | SY 1861   |
| SO GATE<br>(1960)  | 109.601 | RD BRASS CAP IN HDWL 21FT± N/O C/L SOUTHERN AVE (STEWART+GRAY RD) 75FT± E/O BRIDGE OVER RIO HONDO RIVER MKD (RDBM 84) | SY 1863A  |
| SO GATE<br>(1960)  | 104.826 | CO SUR MON IN WELL 10INCHES DN @ OR NEAR C/L INT STEWART+GRAY RD + PERNELL AVE NAIL + COPPER TAG IN CONC MON          | SY 1864A  |
| SO GATE<br>(1960)  | 105.787 | RDBM TAG E CB 1FT± N/O BCR @ NE COR STEWART + GRAY RD + PERNELL AVE 60FT± N/O + 20FT± E/O C/L INT                     | SY 1865A  |
| SO GATE<br>(1960)  | 106.066 | L+T 2FT± W CB RET @ NW COR JULIUS AVE + STEWART + GRAY RD   | SY 1866   |
| SO GATE<br>(1960)  | 106.329 | L + BRAD E CB @ BCR @ NE COR STEWART + GRAY RD + JULIUS AVE 62FT± N + 18FT± E/O C/L INT MKD (BM)                      | SY 1867A  |
| SO GATE<br>(1960)  | 108.461 | RDBM TAG N CB 1.5FT± W/O BCR @ NE COR STEWART + GRAY RD + RIVES AVE 30FT± N/O + 45FT± E/O C/L INT                     | SY 1868A  |
| SO GATE<br>(1960)  | 108.451 | RDBM TAG N CB .3FT± W/O BCR @ NW COR STEWART + GREY RD + RIVES AVE 30FT± N + 55FT± E C/L INT                          | SY 1869A  |
| BASELINE<br>(1955) | 109.791 | L+T 1FT± S BCR @ SE COR PARAMOUNT BLVD + STEWART + GRAY RD  | SY 1870A  |
| SO GATE<br>(1960)  | 126.844 | L+T N CB FLORENCE AVE C/L PROD RIVES AVE MKD (BM)   | SY 1871   |

| QUAD-YEAR          | ELEV   | DESCRIPTION<br>(INCLUDE QUAD AND YEAR IN DESCRIPTION)  | BM NUMBER |
|--------------------|--------|--|-----------|
| SO GATE<br>(1960)  | 93.396 | L+T N END GAS ISLAND 30FT± W C/L GARFIELD PL<br>85FT± S C/L IMPERIAL HWY   | SY 1894   |
| SO GATE<br>(1960)  | 87.485 | CS MON 8FT± SW OF ANG PT @ GARDENDALE AVE +<br>GARFIELD AVE  | SY 1898   |
| SO GATE<br>(1960)  | 85.980 | L+T W CB GARFIELD AVE C/L PROD TAFT AVE  | SY 1899   |
| SO GATE<br>(1960)  | 85.456 | L+BN 15FT± E CB RET NE COR MCKINLEY AVE +<br>GARFIELD AVE  | SY 1900   |
| SO GATE<br>(1960)  | 83.567 | L+BN 15FT± E CB RET @ NE COR ROOSEVELT AVE +<br>GARFIELD AVE (CB IS CRACKED)                                     | SY 1901   |
| SO GATE<br>(1960)  | 81.244 | L+BN W CB GARFIELD AVE 15FT± N CB RET @ NW COR<br>GARFIELD AVE + MAIN ST   | SY 1902   |
| SO GATE<br>(1960)  | 78.992 | L+BN IN E CB 1FT± N BCR @ SE COR GARFIELD AVE +<br>CENTURY BLVD 107FT± S + 38FT± E C/L INT MKD (BM)              | SY 1904A  |
| SO GATE<br>(1960)  | 78.993 | L+BN IN W CB 1FT± N BCR @ SW COR GARFIELD AVE +<br>CENTURY BLVD 36FT± S + 38FT± W C/L INT MKD (BM)               | SY 1905A  |
| SO GATE<br>(1960)  | 76.404 | CS MON 6FT± W C/L GARFIELD AVE APPROX C/L<br>WESTOVER ST TO THE E  | SY 1906   |
| SO GATE<br>(1960)  | 77.092 | L+BN 55FT± S C/L WESTOVER ST + 9FT± W C/L<br>GARFIELD AVE  | SY 1907   |
| SO GATE<br>(1960)  | 76.389 | L+T C/L INT MENDY ST + GARFIELD AVE  | SY 1908   |
| SO GATE<br>(1960)  | 72.064 | CS MON 8FT± W C/L GARFIELD AVE 8FT± N C/L<br>ROSECRANS AVE   | SY 1909   |
| SO GATE<br>(1960)  | 72.247 | L+T @ C/L INT RICHFIELD ST + GARFIELD AVE  | SY 1910   |
| SO GATE<br>(1960)  | 72.176 | L+T NE END GAS ISLAND @ NW COR EXETER ST +<br>GARFIELD AVE   | SY 1911   |
| SO GATE<br>(1960)  | 70.608 | L+T C/L INT PETROL ST + GARFIELD AVE   | SY 1912   |
| BASELINE<br>(1955) | 70.014 | L+T IN CONC APRON TO BLDG 7002 COMPTON BLVD<br>45FT± E C/L ORANGE AVE + 35FT± S C/L COMPTON<br>BLVD @ SE COR     | SY 1930A  |
| BASELINE<br>(1955) | 69.955 | L+T W END OF CONC APRON TO BLVD 7000 COMPTON<br>BLVD 25FT± E C/L ORANGE AVE + 45FT± S C/L<br>COMPTON BLVD        | SY 1931A  |
| BASELINE<br>(1955) | 68.840 | L+T W CB EL CAMINO AVE 6FT± N CB RET @ NW COR<br>COMPTON BLVD + EL CAMINO AVE                                    | SY 1932B  |
| BASELINE<br>(1955) | 68.955 | L+T E CB 15FT± S CB RET @ SE COR FAULKNER AVE<br>+ COMPTON BLVD  | SY 1933A  |
| BASELINE<br>(1955) | 68.922 | L+T W CB SAN JOSE AVE 5FT± N CB RET @ NW COR<br>SAN JOSE AVE + 1ST ALLEY N COMPTON BLVD                          | SY 1934B  |
| BASELINE<br>(1955) | 68.596 | L+T W CB SAN JOSE AVE 8FT± S CB RET @ SW COR<br>SAN JOSE AVE + 1ST ALLEY S COMPTON BLVD                          | SY 1936A  |
| BASELINE<br>(1955) | 67.415 | CS MON C/L SAN JOSE AVE + APPROX N P/L OF 1ST<br>ALLEY S COMPTON 130FT± S C/L INT SAN JOSE AVE +<br>COMPTON BLVD | SY 1937B  |



| QUAD-YEAR          | ELEV   | DESCRIPTION<br>(INCLUDE QUAD AND YEAR IN DESCRIPTION)   | BM NUMBER |
|--------------------|--------|---|-----------|
| BASELINE<br>(1955) | 69.327 | L+T W EDGE CONC APRON TO GARAGE OF HSE 15111<br>SAN JOSE AVE 135FT± W C/L SAN JOSE AV + 10FT±<br>S C/L 1ST ALLEY S COMPTON BLVD   | SY 1938A  |
| BASELINE<br>(1955) | 67.099 | CS MON @ C/L INT OF COMPTON BLVD + SAN ANTONIO<br>AVE IN WELL W/COVER 1FT DEEP STAMPED (RE 329)   | SY 1940A  |
| BASELINE<br>(1955) | 88.545 | RDBM TAG IN EAST ABUT. @ NE COR OF COMPTON BLVD<br>BRIDGE OVER LA RIVER 0.4FT± N OF CB FACE   | SY 1941B  |
| BASELINE<br>(1955) | 91.909 | SET RDBM TAG IN N CB @ CTR PIER OF COMPTON BLVD<br>BRIDGE OVER LA RIVER   | SY 1942A  |
| BASELINE<br>(1955) | 90.124 | RDBM TAG IN WEST ABUT. @ NW COR OF COMPTON BLVD<br>BRIDGE OVER LA RIVER 0.65FT± N OF CB FACE  | SY 1943B  |
| BASELINE<br>(1955) | 78.240 | RDBM TAG IN SOUTH CB COMPTON BLVD 65FT± W OF<br>BRIDGE NO 53-823 OVER THE (LONG BEACH FREEWAY)<br>250FT± E OF GIBSON AVE  | SY 1944B  |
| BASELINE<br>(1955) | 68.709 | L+T 2FT± N CB RET @ NW COR 1ST ALLEY N COMPTON<br>BLVD ON GIBSON ST   | SY 1945B  |
| BASELINE<br>(1955) | 67.883 | L+T 7FT± S CB RET @ SW COR 1ST ALLEY S COMPTON<br>BLVD ON GIBSON ST   | SY 1947B  |
| BASELINE<br>(1955) | 67.551 | L+T 2.5FT± S CB RET @ SE COR 1ST ALLEY S COMPTON<br>BLVD ON WILLIAMS AVE  | SY 1948A  |
| BASELINE<br>(1955) | 67.142 | CS MON @ C/L INT WILLIAMS AVE + 1ST ALLEY S<br>COMPTON BLVD   | SY 1949A  |
| BASELINE<br>(1955) | 67.680 | L+T S CB COMPTON BLVD 10FT± W CB RET @ SW COR<br>COMPTON BLVD + WILLIAMS AVE  | SY 1950A  |
| BASELINE<br>(1955) | 68.466 | L+T W CB WILLIAMS AVE 20FT± N CB RET @ NW COR<br>WILLIAMS AVE + 1ST ALLEY N COMPTON BLVD  | SY 1951A  |
| BASELINE<br>(1955) | 67.260 | L+T S CB COMPTON BLVD 8FT± W CB RET @ SW COR<br>COMPTON BLVD + FRAILEY AVE  | SY 1952A  |
| BASELINE<br>(1955) | 66.905 | L+SPK S CB COMPTON BLVD 12FT± W CB RET @ SW COR<br>COMPTON BLVD + LIME AVE (SPK MKD T-376)  | SY 1953A  |
| BASELINE<br>(1955) | 66.900 | L+T CTR CB RET @ SE COR COMPTON BLVD + ATLANTIC<br>AVE  | SY 1954B  |
| BASELINE<br>(1955) | 66.684 | LA METRO WATER DIST BR DISC IN CONC SQ 31.3FT±<br>S OF C/L OF COMPTON BLVD 13.3FT± W OF CB RET @<br>SW COR COMPTON BLVD + ATLANTIC AVE 78FT± SW OF<br>C/L INT MKD (MET WATER DIST 56-W) | SY 1955B  |
| SD GATE<br>(1960)  | 69.226 | L+SPK E CB GIBSON ST 16FT± S CB RET @ SW COR<br>GIBSON ST + SAN MARCUS ST MKD (9-A-50) +<br>(T-419)   | SY 1956   |
| SD GATE<br>(1960)  | 69.411 | L+T W CB GIBSON ST + C/L PROD SAN MARCUS ST   | SY 1957A  |
| SD GATE<br>(1960)  | 69.997 | L+SPK E CB GIBSON ST 16FT± S CB RET @ SE COR<br>GIBSON ST + SAN MATEO ST MKD (T-420)  | SY 1958A  |
| SD GATE<br>(1960)  | 70.178 | L+SPK E CB GIBON ST 16FT± S CB RET @ SE COR<br>GIBSON ST + SAN VINCENTE ST MKD (10-A-50) +<br>(T-421)   | SY 1959A  |
| SD GATE<br>(1960)  | 69.918 | L+SPK E CB GIBSON ST 14FT± S CB RET @ SE COR<br>GIBSON ST + SAN MIGUEL ST MKD (T-422)   | SY 1960A  |

| QUAD-YEAR          | ELEV    | DESCRIPTION<br>(INCLUDE QUAD AND YEAR IN DESCRIPTION)   | BM NUMBER |
|--------------------|---------|---|-----------|
| SO GATE<br>(1960)  | 70.998  | L+SPK E CB GIBSON ST 12FT± S CB RET @ SE COR<br>GIBSON ST + SAN JUAN ST MKD (T-423)   | SY 1961A  |
| SO GATE<br>(1960)  | 71.485  | L+SPK E CB GIBSON ST 12FT± S CB RET @ SE COR<br>GIBSON ST + SAN CARLOS ST MKD (T-424)   | SY 1962A  |
| SO GATE<br>(1960)  | 71.822  | L+SPK 13FT± S BCR @ SE COR GIBSON ST + SAN<br>RAFAEL ST MKD (T-425)   | SY 1963A  |
| SO GATE<br>(1960)  | 71.470  | RD MON @ C/L INT GIBSON AVE + ROSECRANS AVE   | SY 1964A  |
| BASELINE<br>(1955) | 73.678  | L+N SE COR CONC SIGNAL BASE 20FT± S @ C/L<br>COMPTON BLVD W SIDE UPRR   | SY 1993A  |
| BASELINE<br>(1955) | 83.591  | L+T 18FT± W CB RET @ SW COR PARAMOUNT BLVD +<br>GARDENDALE ST   | SY 2041   |
| SO GATE<br>(1960)  | 125.986 | L+B 6INCHES± N CB RET @ NE COR WILEY BURKE AVE<br>+FLORENCE AVE   | SY 2132   |
| SO GATE<br>(1960)  | 126.266 | L+B 4IN± N CB RET @ NW COR HORLEY AVE + FLORENCE<br>AVE   | SY 2133   |
| SO GATE<br>(1960)  | 126.842 | L+BN 4FT± E CB RET @ NE COR SMALLWOOD AVE +<br>FLORENCE AVE   | SY 2134   |
| BASELINE<br>(1955) | 73.442  | L+T E CB ALAMEDA ST 33FT± S OF N CB ORIS ST PROD  | SY 2351   |
| BASELINE<br>(1955) | 71.249  | L+T E CB ALAMEDA ST ON C/L PROD MEALY ST  | SY 2352   |
| BASELINE<br>(1955) | 72.180  | L+T E CB 2FT± S BCR @ SE COR ALAMEDA ST +<br>ROSECRANS BLVD   | SY 2353A  |
| BASELINE<br>(1955) | 69.456  | L+T E CB 26FT± E C/L ALAMEDA ST W BARREL +<br>C/L PROD MAPLE ST   | SY 2354A  |
| BASELINE<br>(1955) | 68.972  | L+BN N CB COMPTON BLVD 13FT± E OF E RAIL OF<br>SPRR 29FT± W CB RET @ NW COR ALAMEDA ST E DR +<br>COMPTON BLVD 60FT± W C/L E DRIVE 28FT± N C/L<br>COMPTON BLVD | SY 2356A  |
| BASELINE<br>(1955) | 69.164  | L+BN S CB COMPTON BLVD 5FT± E OF E RAIL OF SPRR<br>29FT± W CB RET @ SW COR ALAMEDA ST E DR +<br>COMPTON BLVD 70FT± W C/L E DRIVE 28FT± N C/L<br>COMPTON BLVD  | SY 2357A  |
| BASELINE<br>(1955) | 70.370  | L+T CTR CB RET @ SE COR ROSECRANS AVE + ALAMEDA<br>ST E BARREL  | SY 2419A  |
| SO GATE<br>(1960)  | 94.314  | FC BR DISC IN CONC FLOOR OF BRIDGE OVER LA RIV<br>ON ROSECRANS AVE 6FT± N OF S EDGE @ SW COR<br>BRIDGE MKD (BM 4-30 1957)                                     | SY 2437A  |
| SO GATE<br>(1960)  | 87.177  | RD BM TAG N CB ISLAND 50FT± E OF END BRIDGE<br>OVER LA RIV ON ROSECRANS AVE   | SY 2439A  |
| SO GATE<br>(1960)  | 71.594  | CS MON S C/L ROSECRANS AVE 140FT± E C/L ORANGE<br>AVE   | SY 2441A  |
| SO GATE<br>(1960)  | 73.040  | CS MON C/L ROSECRANS AVE @ C/L STA 276+58 FRONT<br>HSE NO 7202 1300FT W C/L GARFIELD AVE  | SY 2443A  |
| SO GATE<br>(1960)  | 72.749  | L+T S CB @ SE COR GARFIELD AVE +<br>ROSECRANS AVE 25FT± S + 40FT± E C/L INT   | SY 2447A  |

