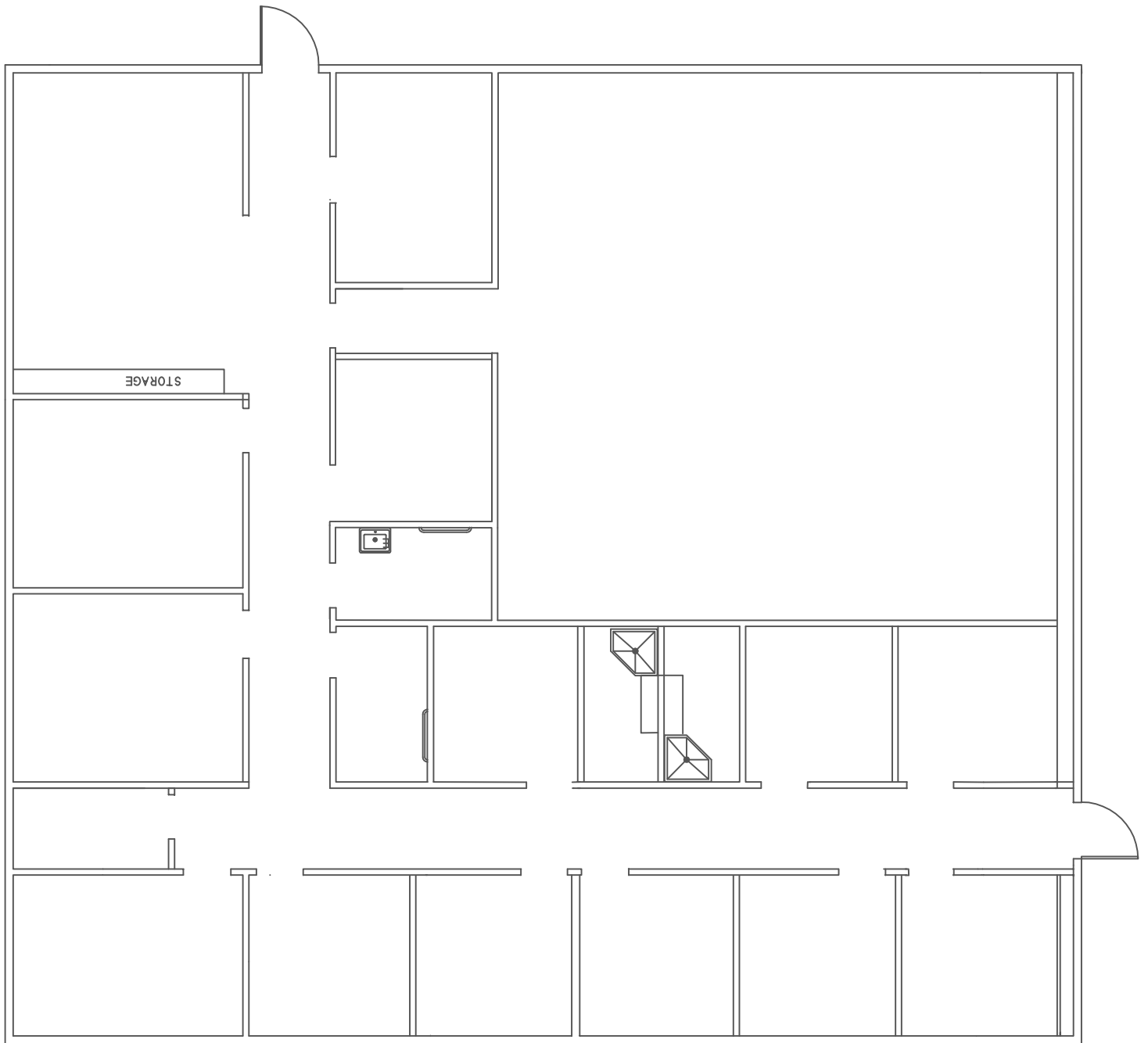


# EXHIBIT I



44900 N. 60th St.,  
Lancaster, CA

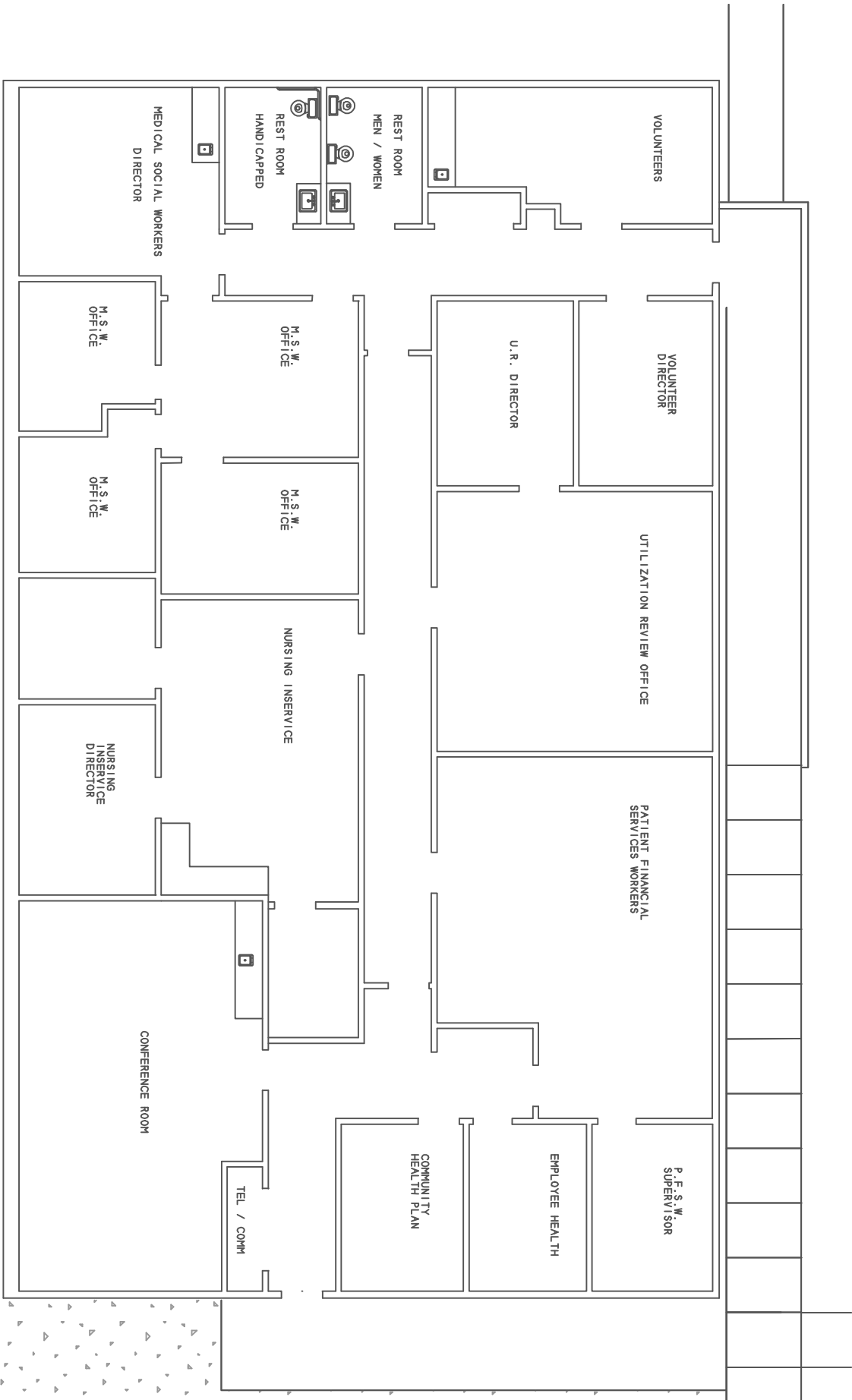
- 44900 MACC
- B1 Gibbons Annex/Medi-cal
- B2 Pediatrics
- B3 Pediatrics/LASD Substation
- B4 Urgent Care
- B5 Outpatient Pharmacy
- B6 Recovery Services
- B7 Doctors Off./Med. Library
- B8 Information Systems
- B9 Coroner
- B10 Transportation
- B11 Facilities/Crafts
- B12 Carpentry Shop
- B13 Easy Street
- 45120 Glenchur/Archives
- 45150 Munsie/Warehouse

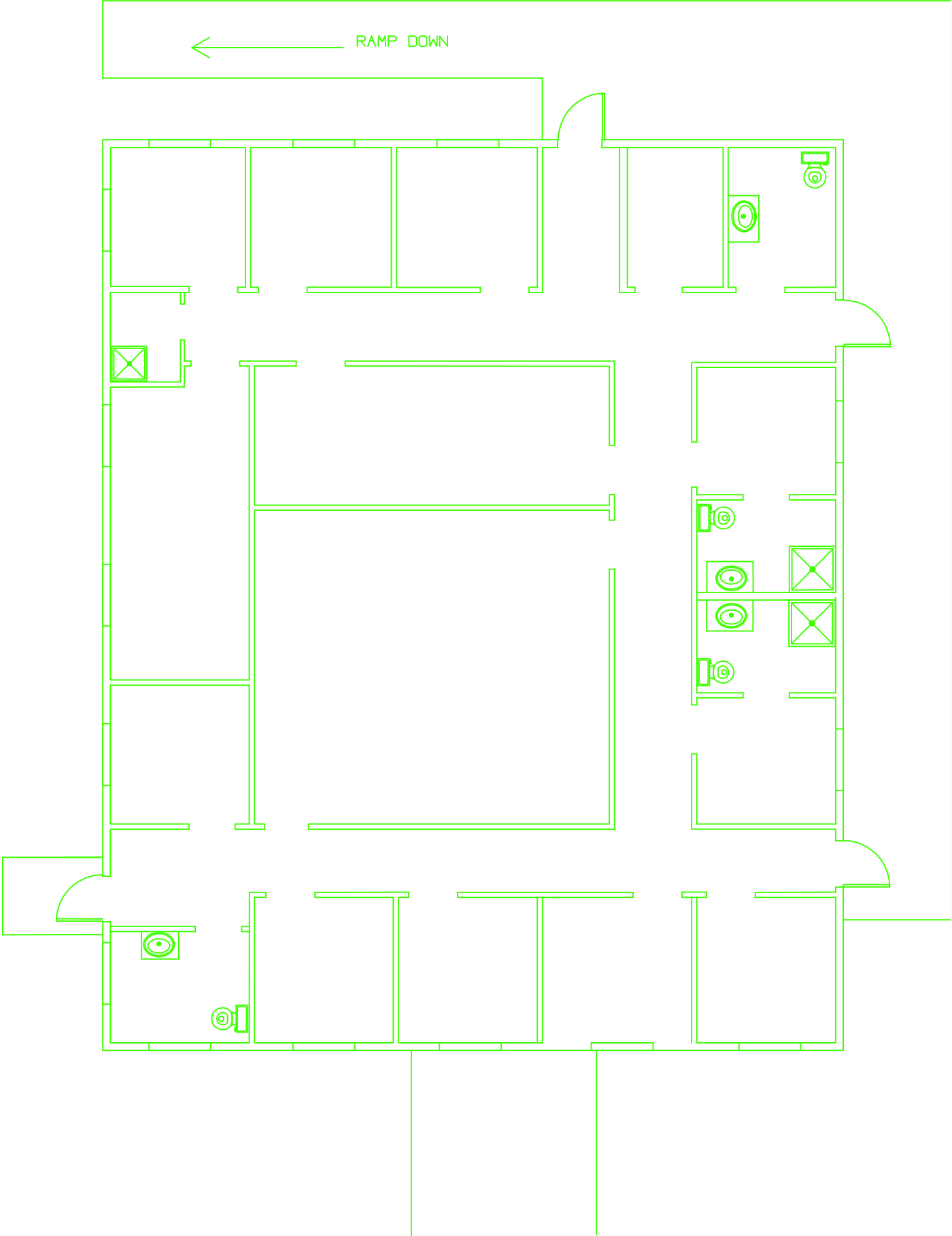
HWLA/ORSA

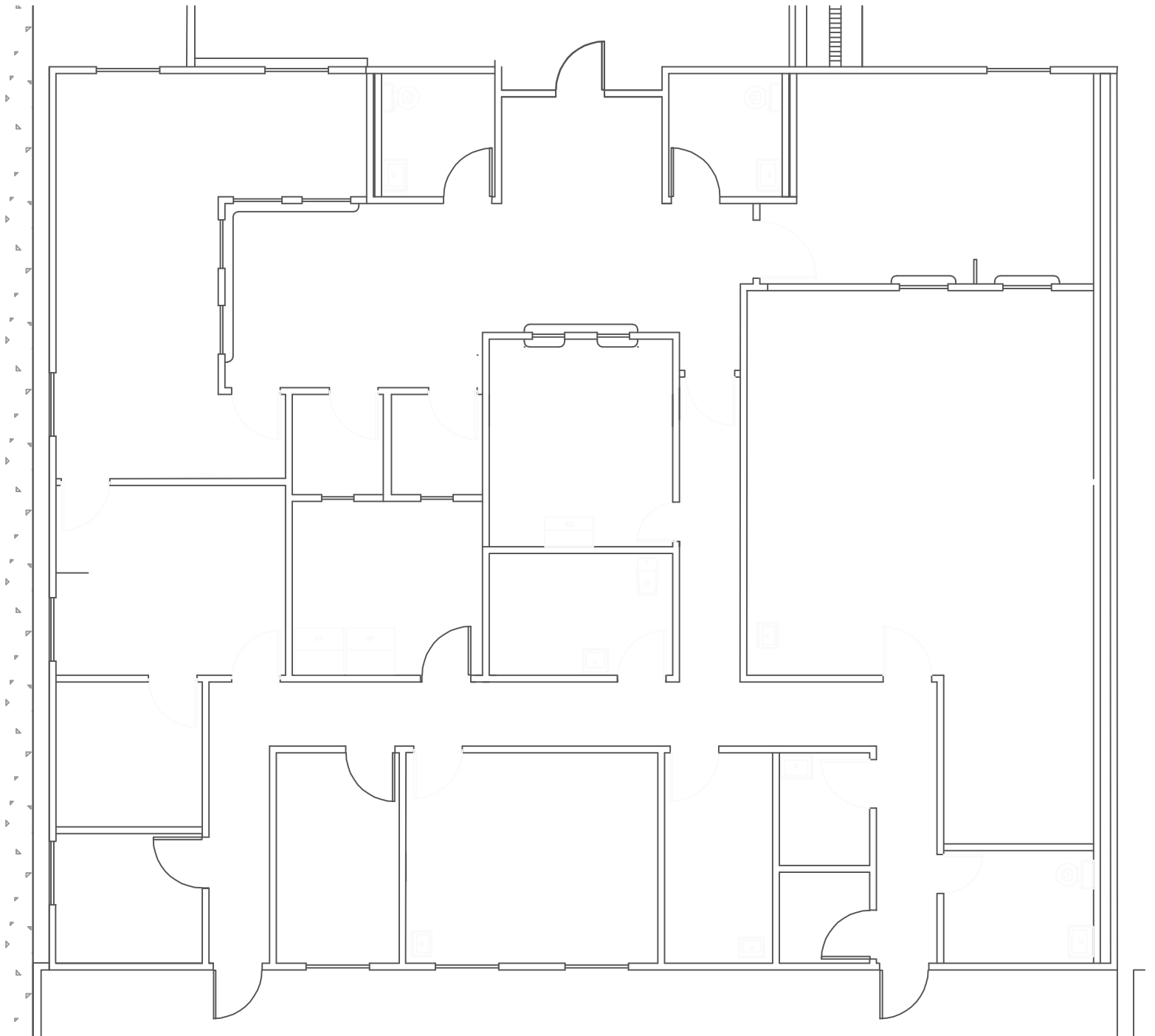


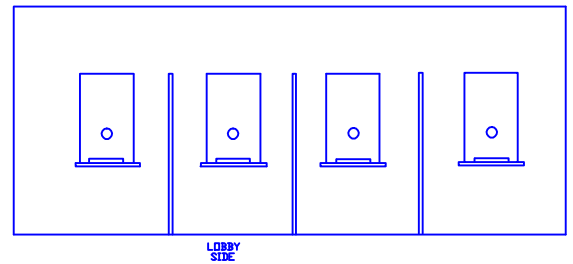
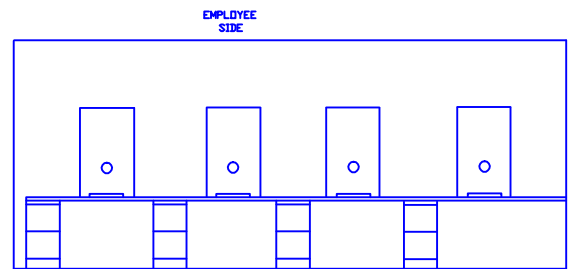
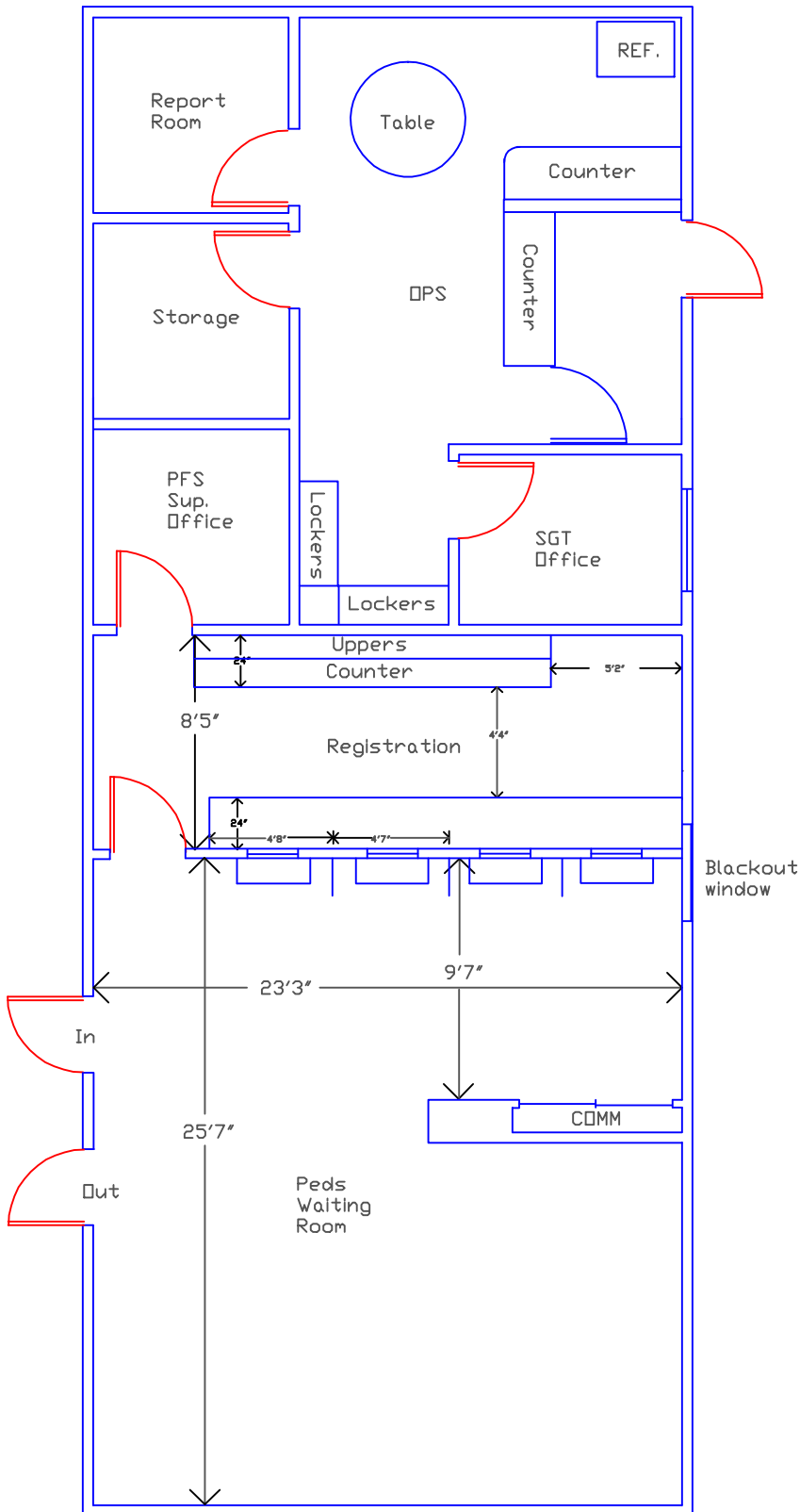
60th STREET WEST

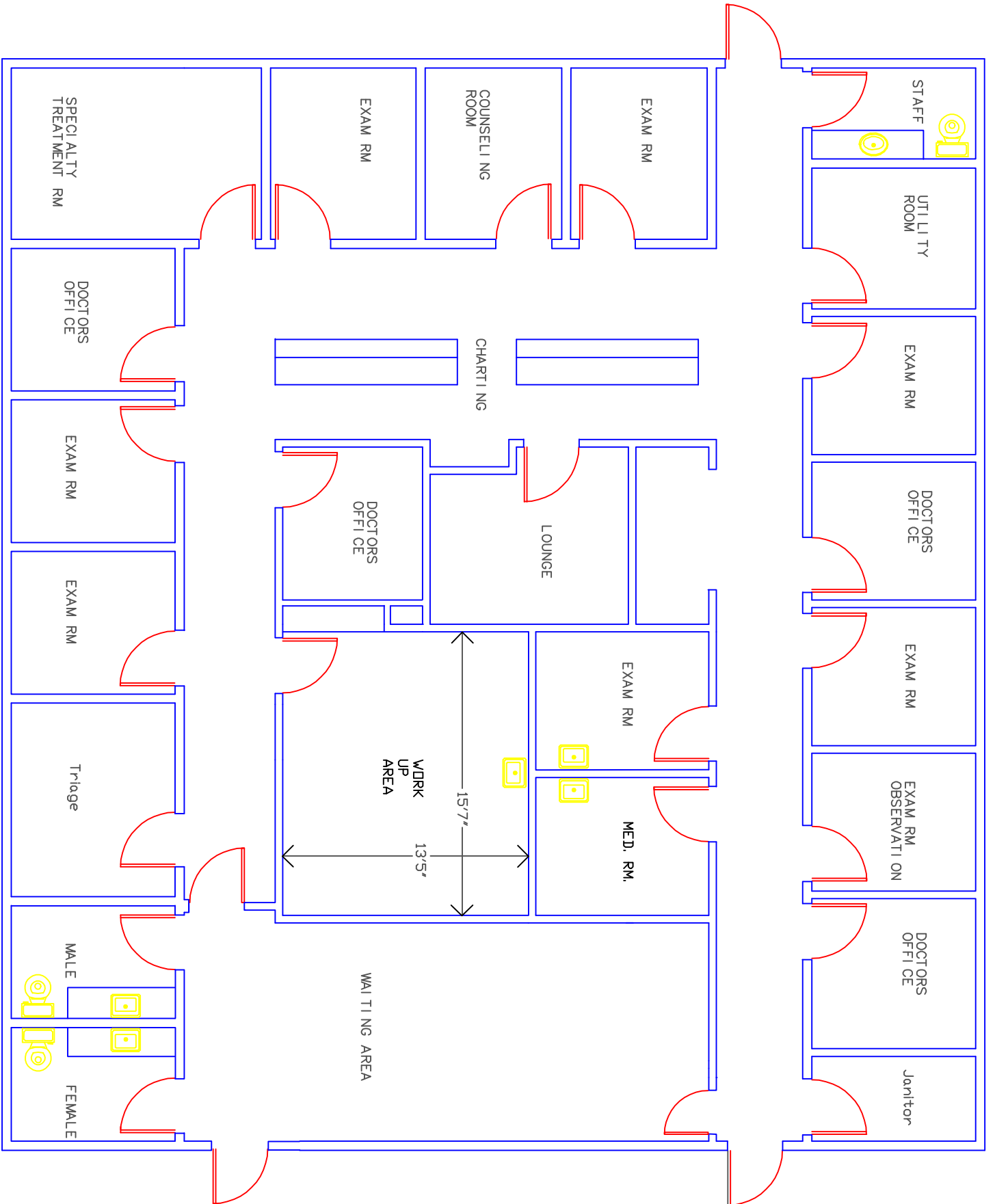
3/15/11 T.H.

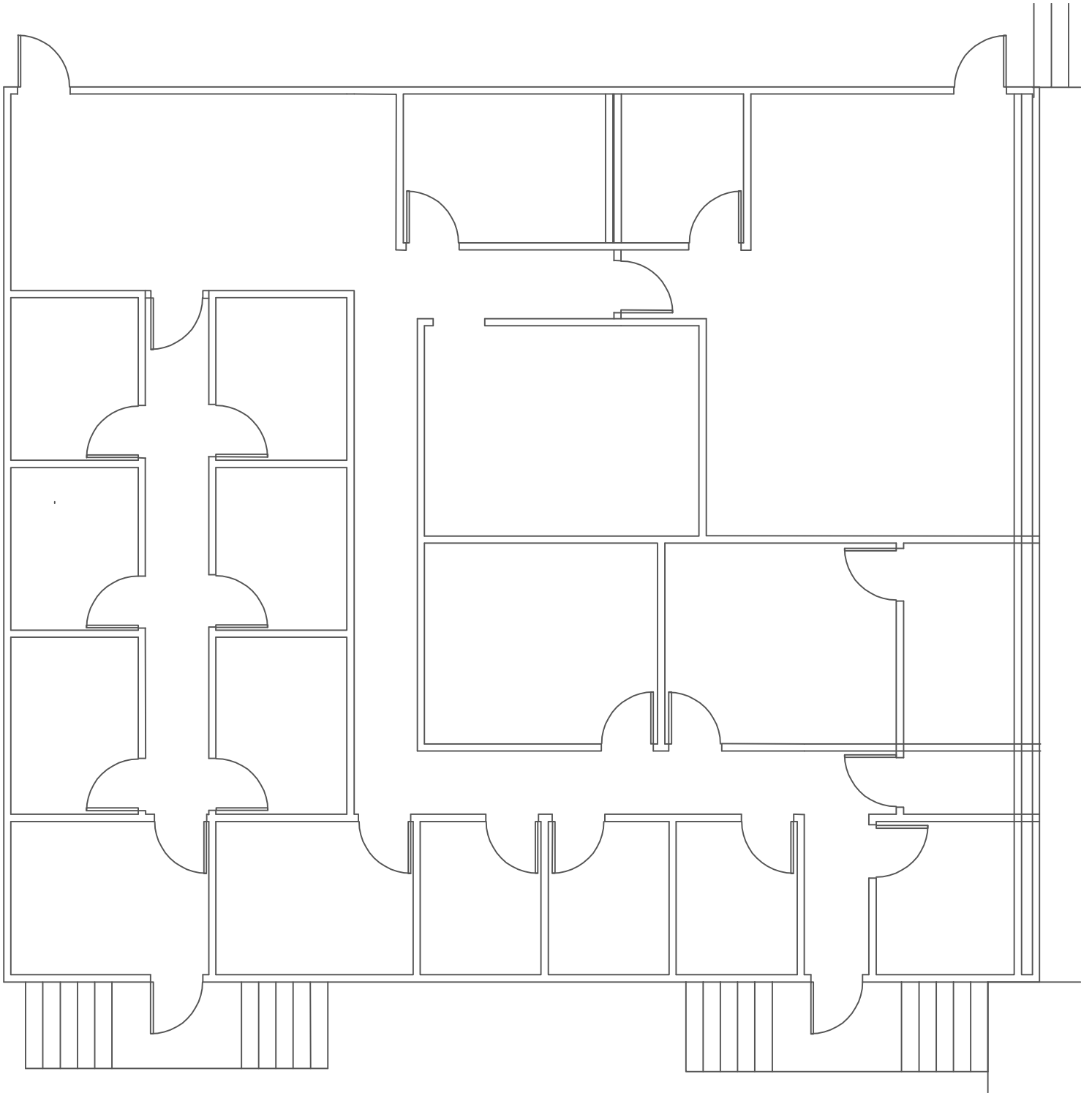


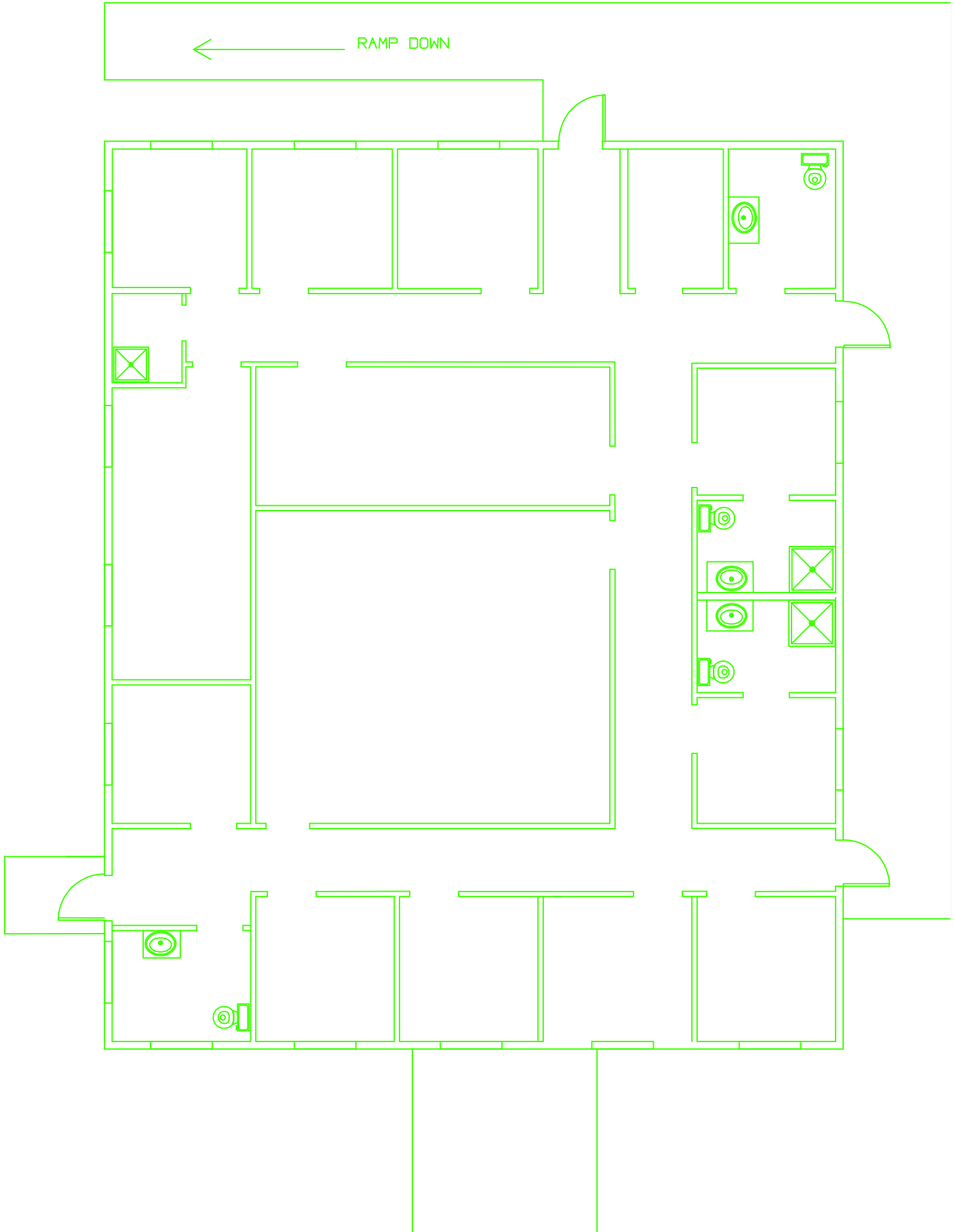




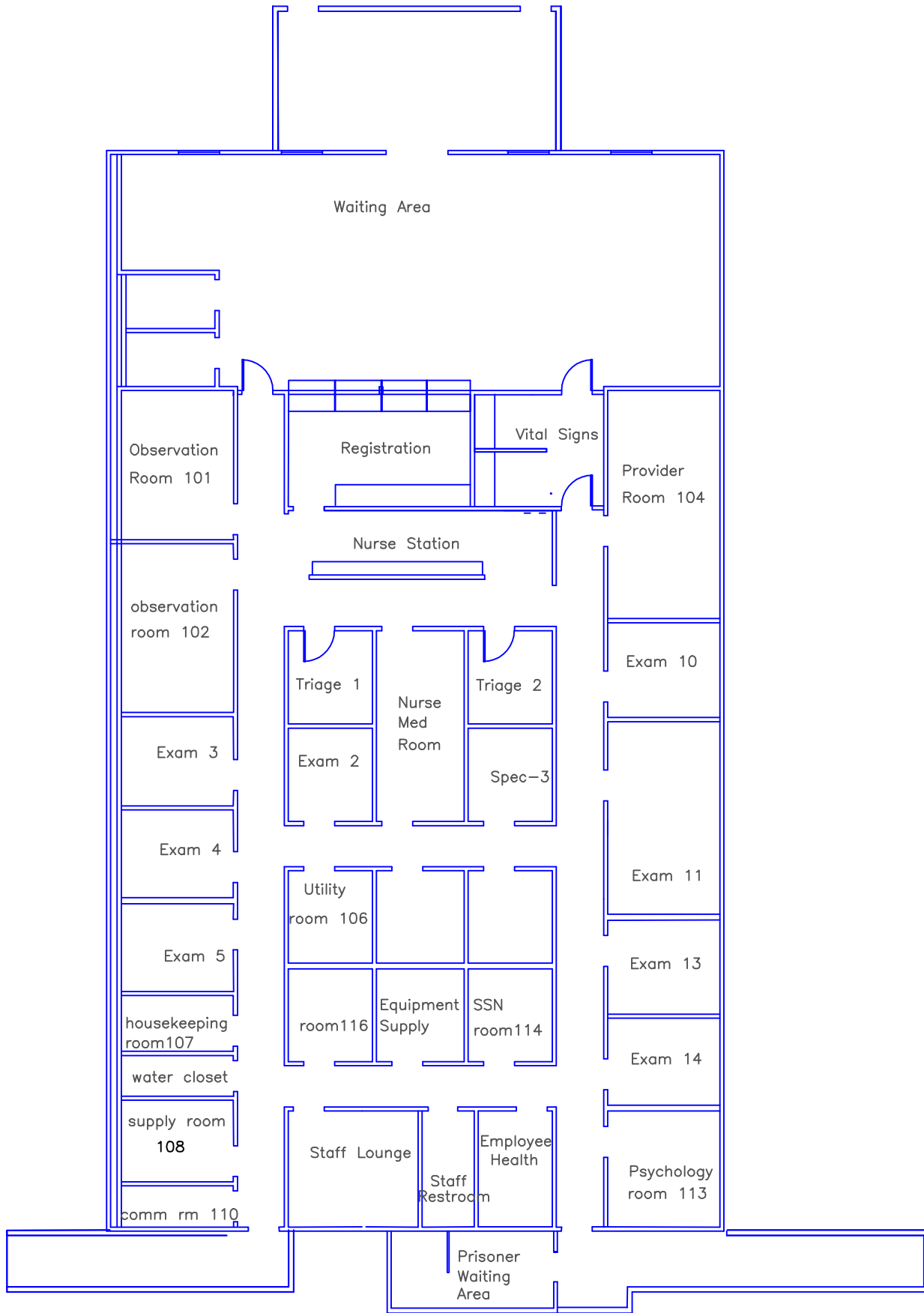


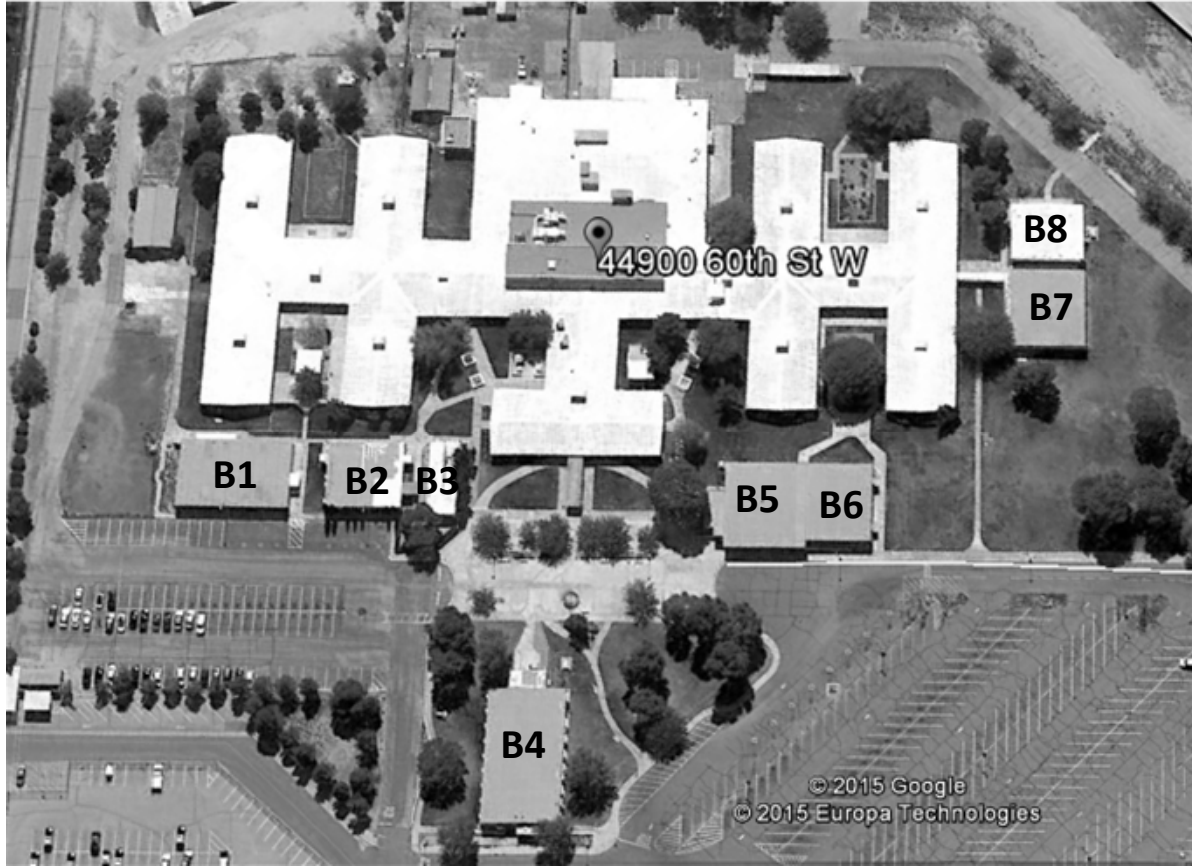






URGENT CARE / SPECIALTY CLINIC

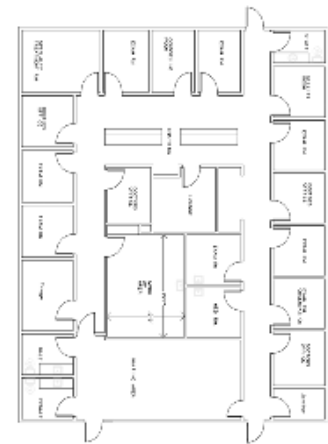




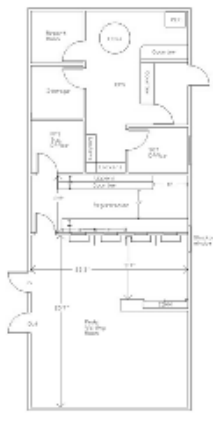
**VISIO SITE TRAILERS**



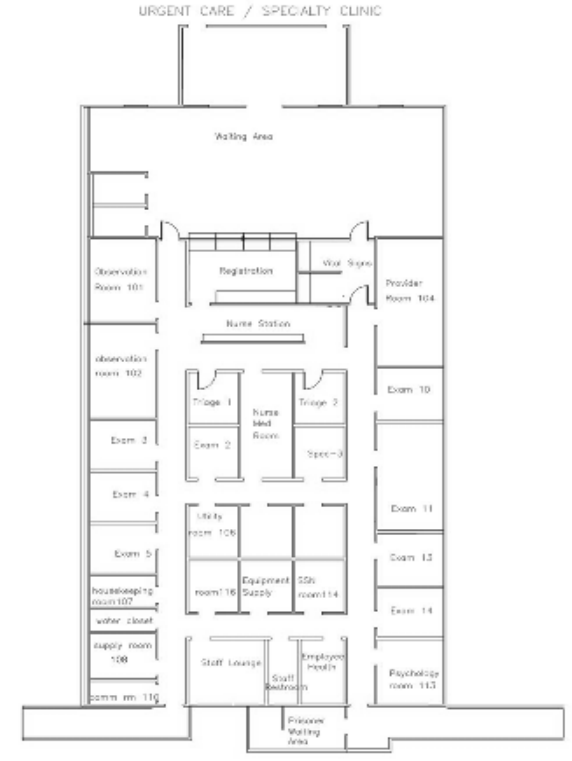
Trailer B1 (Gibbons) 5,000 sq.ft



Trailer B2 (Pediatrics) 3,000 sq.ft



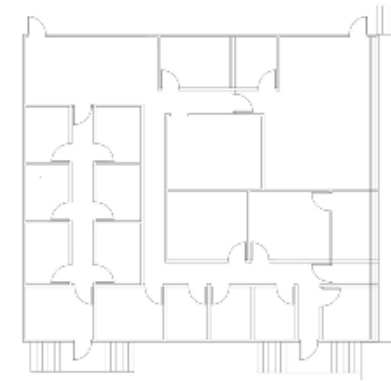
Trailer B3 (Peds) 1,200 sq.ft



Trailer B4 (Urgent Care) 6,000 sq.ft



Trailer B5 (Outpatient Pharmacy) 4,200 sq.ft



Trailer B6 (Recovery SVC) 3,900 sq.ft



Trailer B7 (Doctors Office) 3,900 sq.ft



Trailer B8 (Information Systems) 2,900 sq.ft