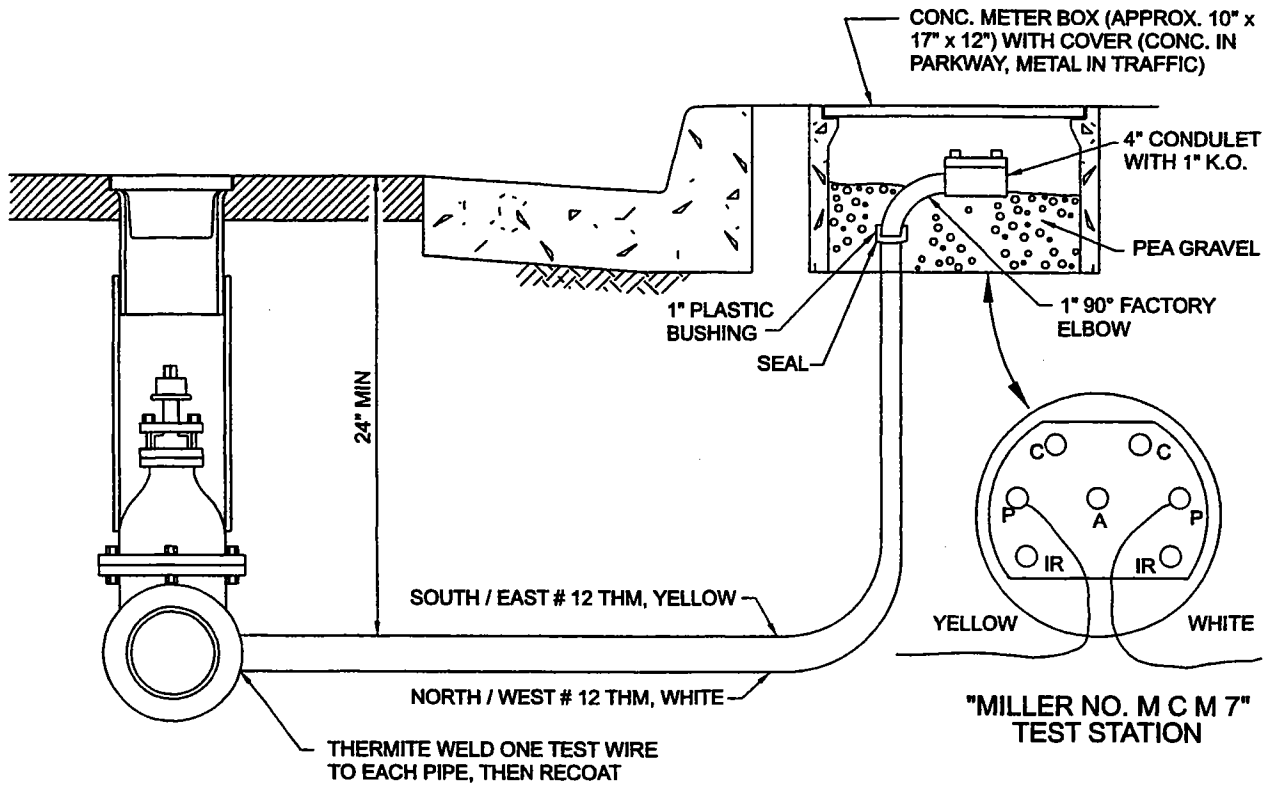


CATHODIC PROTECTION - INSULATED JOINT TEST STATION



NTS

**CORROSION CONTROL, WIRE TEST PROCEDURE**

THE CONTRACTOR SHALL MAKE THE FOLLOWING ELECTRICAL TESTS BEFORE AND AFTER BACKFILL AND PAVING OPERATIONS;

1. EACH WIRE SHALL READ AT LEAST 100 MILLIVOLTS (100 MV) FROM THE WIRE TERMINAL TO GROUND (COPPER SULFATE 1/2 CELL).
2. EACH WIRE OF THE PAIR OF WIRES FROM DIELECTRIC COUPLING SHALL PASS ABOVE TESTS PLUS HAVE A DIFFERENTIAL OF 25MV BETWEEN READINGS. IF 25MV CANNOT BE REACHED, CALL INSPECTOR FOR FURTHER TEST PROCEDURES.

ALL OF THE ABOVE TESTS CAN BE MADE WITH A "MILLER PIPE TO SOIL 1-A-04107", OR A "TINKER-RASOR PIPE TO SOIL CPV-2", OR EQUIVALENT INSTRUMENT.

COAT INSULATING FLANGE INCLUDING NUTS AND BOLTS WITH COAL-TAR PRIMER AND MINIMUM 3/16" THICK HOT COAL TAR FOLLOWED BY MINIMUM 1" THICK COATING OF CEMENT MORTAR. FLANGE MORTAR COATING TO OVERLAP PIPE COATING 1 1/2" MINIMUM.

CEMENT MORTAR SHALL BE 1 PART CEMENT, 3 PARTS SAND, AND 1 PART LIME.

BACKFILL FOR 6" ALL AROUND ENTIRE VALVE ASSEMBLY IN CONSTRUCTION SAND.

REQUIREMENTS HEREON SHALL APPLY IF INSULATING FLANGE IS INSTALLED ON A FITTING OR PAIR OF FLANGES.

LOS ANGELES COUNTY WATERWORKS DISTRICTS

DEPARTMENT OF PUBLIC WORKS

STANDARD PLAN

W-38

APPROVED

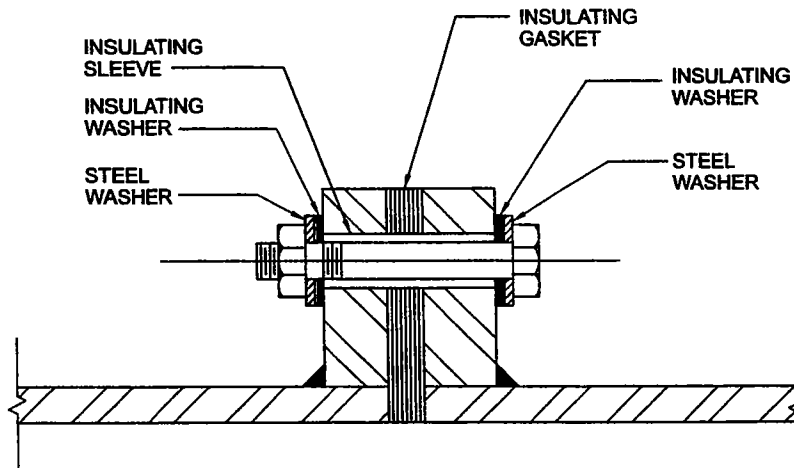
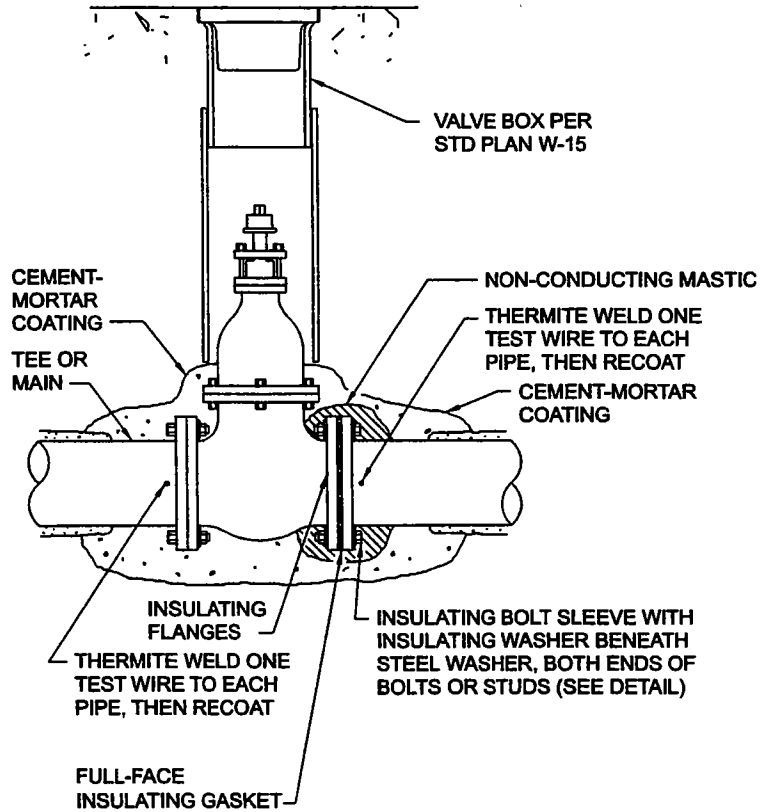
*[Signature]*  
ASSISTANT DEPUTY DIRECTOR

APRIL 2004

DATE

SHEET 1 OF 2

CATHODIC PROTECTION - INSULATED JOINT TEST STATION (CONTINUED)



1. DO NOT APPLY METALLIC OR OTHER NON-INSULATING PAINTS TO INSULATING PARTS OR OTHER EDGES OF FLANGES.
2. INSULATING KIT TO BE PSI TYPE E OR APPROVED EQUAL.
3. INSULATING SLEEVE TO BE 1/64" SHORTER THAN DISTANCE BETWEEN STEEL WASHERS WHEN BOLT IS FULLY TIGHTENED.

NTS

LOS ANGELES COUNTY WATERWORKS DISTRICTS

DEPARTMENT OF PUBLIC WORKS

STANDARD PLAN

W-38

APPROVED

*Michael Reed*  
 ASSISTANT DEPUTY DIRECTOR

APRIL 2004

DATE

SHEET 2 OF 2