



# FACT SHEET



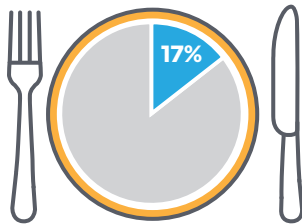
## FOOD DONATION FOR BUSINESSES

Each year, County unincorporated areas toss **128,000 tons** of food waste into the trash.

Los Angeles County Public Works partnered with local charities in Los Angeles County to offer businesses a food donation option through the Food Donation and Recovery Outreach Program (Food DROP).

As an added benefit to businesses located within County unincorporated areas, Public Works will help businesses develop a food donation plan free of charge. To schedule a meeting, call **(888) CLEAN-LA**.

Food waste makes up 17% of the County's unincorporated areas waste stream.



## FOOD DONATION IS TAX DEDUCTIBLE

All businesses who donate to a non-profit with 501(c)(3) and uses the food for the care of the ill, the needy or infants qualify for an enhanced tax deduction. Contact a tax professional for additional guidance.

## YOU ARE PROTECTED! U.S. CODE BILL EMERSON GOOD SAMARITAN FOOD DONATION ACT

A person or gleaner shall not be subject to civil or criminal liability arising from the nature, age, packaging, or condition of apparently wholesome food or an apparently fit grocery product that the person or gleaner donates in good faith to a nonprofit organization for ultimate distribution.



Learn more at [FoodDROPLA.com](http://FoodDROPLA.com)

## ORGANIC WASTE RECYCLING



To assist businesses with recycling and complying with State laws, Los Angeles County established a commercial waste collection franchise system. Businesses in County unincorporated areas may contact their commercial waste hauler to arrange recycling and organic waste recycling service that fit your needs.

Public Works is conducting free on-site visits to help commercial edible food generators found within County unincorporated areas.

### SB 1383

#### SHORT-LIVED CLIMATE POLLUTANTS LAW

SB 1383 establishes methane emission reduction targets by reducing statewide organic waste disposal as follows:

**75% reduction** in statewide disposal of organic waste by 2025

In addition, SB 1383 requires that not less than 20% of edible food that is disposed be recovered for human consumption by 2025 as follows:

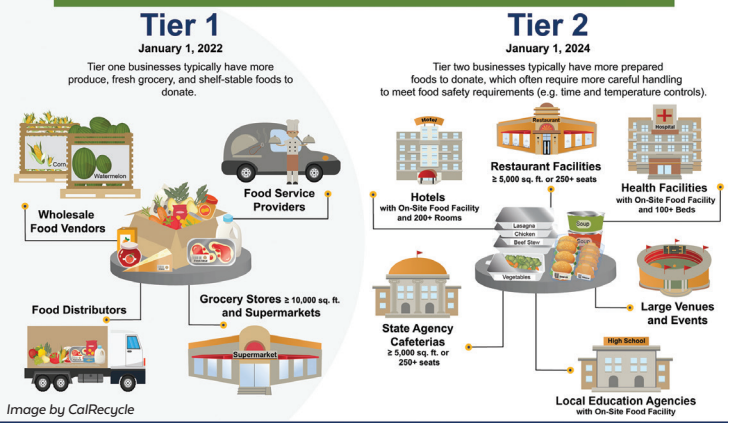
#### January 1, 2022:

All Tier One Commercial Edible Food Generators  
(Supermarkets, Large Grocery Stores, Food Service Providers, Food Distributors, Wholesale Food Vendors)

#### January 1, 2024:

All Tier Two Commercial Edible Food Generators  
(Restaurants, Hotels, Health Facilities, Large Venues/Events, State Agency Cafeterias, Local Education Agencies)

## Commercial Edible Food Generators



Learn more at [FightFoodWasteLA.com](http://FightFoodWasteLA.com)



## Los Angeles County Public Works

Monday – Thursday, 7:30 a.m. – 5:30 p.m. | (888) CLEAN-LA (888) 253-2652

email: [FoodDROPLA@pw.lacounty.gov](mailto:FoodDROPLA@pw.lacounty.gov)