



AMENDMENT TO CITY OF POMONA NONDISPOSAL FACILITY ELEMENT 2010

Los Angeles County Integrated
Waste Management Task Force

JULY 15, 2010

Presented by: Martins Aiyetiwa



OVERVIEW

- City of Pomona is proposing to amend its Nondisposal Facility Element (NDFE) to incorporate Pomona Valley Transfer Station.
- CalRecycle approved the City of Pomona's NDFE in 1995.
- The purpose of the meeting today is to obtain Task Force's comments on the proposed NDFE amendment.



OVERVIEW

- Pomona Valley Transfer Station is a proposed facility and currently does not exist.
- PRC Section 50001 require permits for new solid waste facilities, and expansions of existing solid waste facilities, to be reviewed for their conformance with a jurisdiction's solid waste planning documents as part of the permit review process.



PROPOSED FACILITY OVERVIEW

- Pomona Valley Transfer Station will be owned and operated by Grand Central Recycling & Transfer Station, Inc., City of Industry
- The facility will be located at 1371 East 9th Street, Pomona, will be utilized by City of Pomona, Montclair, Claremont, Upland, Ontario, Rancho Cucamonga, Diamond Bar, Covina, San Dimas, La Verne, Chino, and Unincorporated Los Angeles County areas.



PROPOSED FACILITY OVERVIEW

- The facility is about 10.5 acres, and located within an Industrial zone area.
- It consists of 47,224 sf main tipping area for commercial haul-out, 8,144 sf of self-hauling tipping area, 6,537 sf of load-out area, 6,502 sf sub-grade Transfer Tunnel area, 8050 sf of office building, 5000 sf of maintenance area and 100 sf of scale house.
- Facility does not have access to rail line
- The facility is expected to be in operation by 4th quarter of 2011.

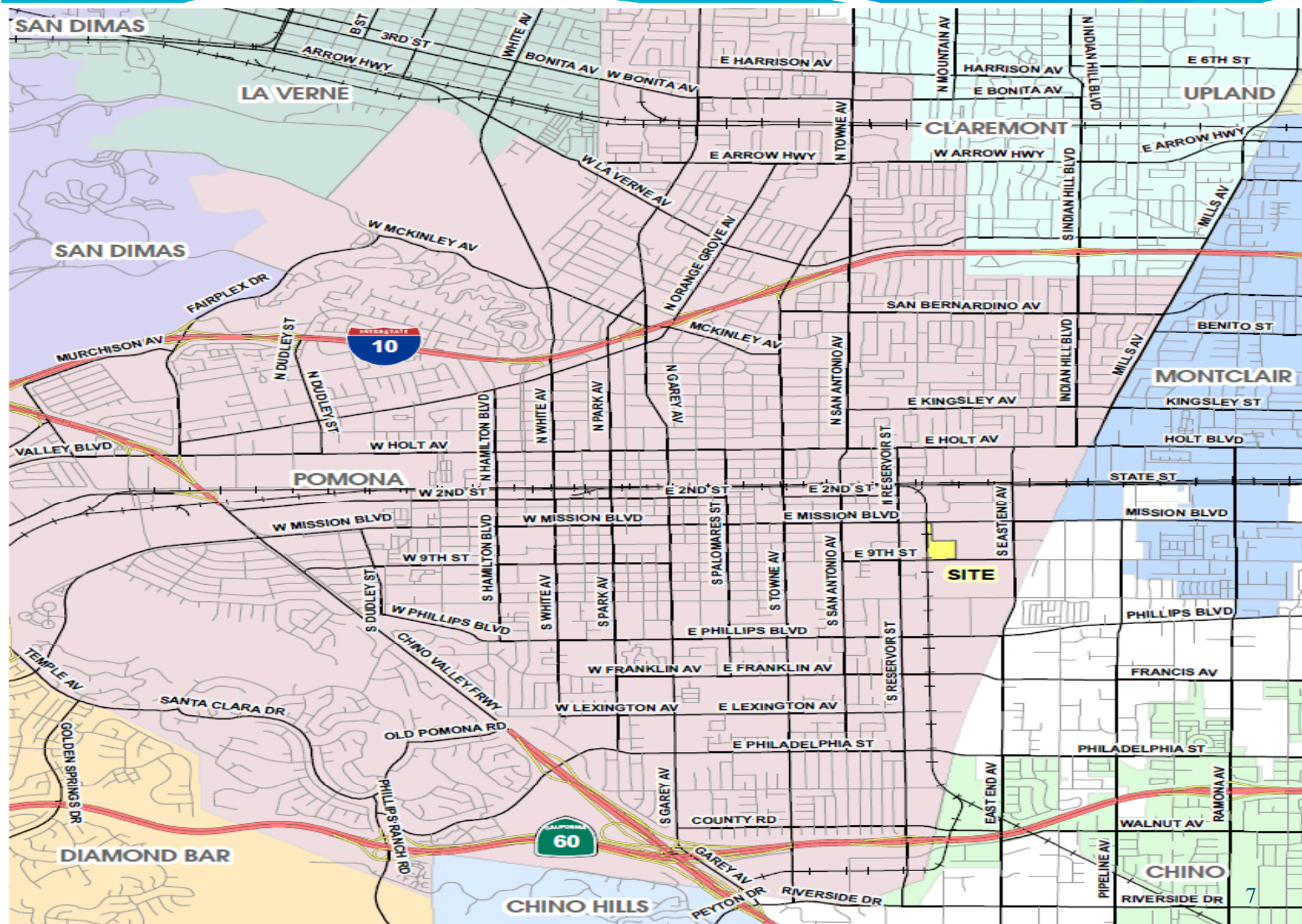


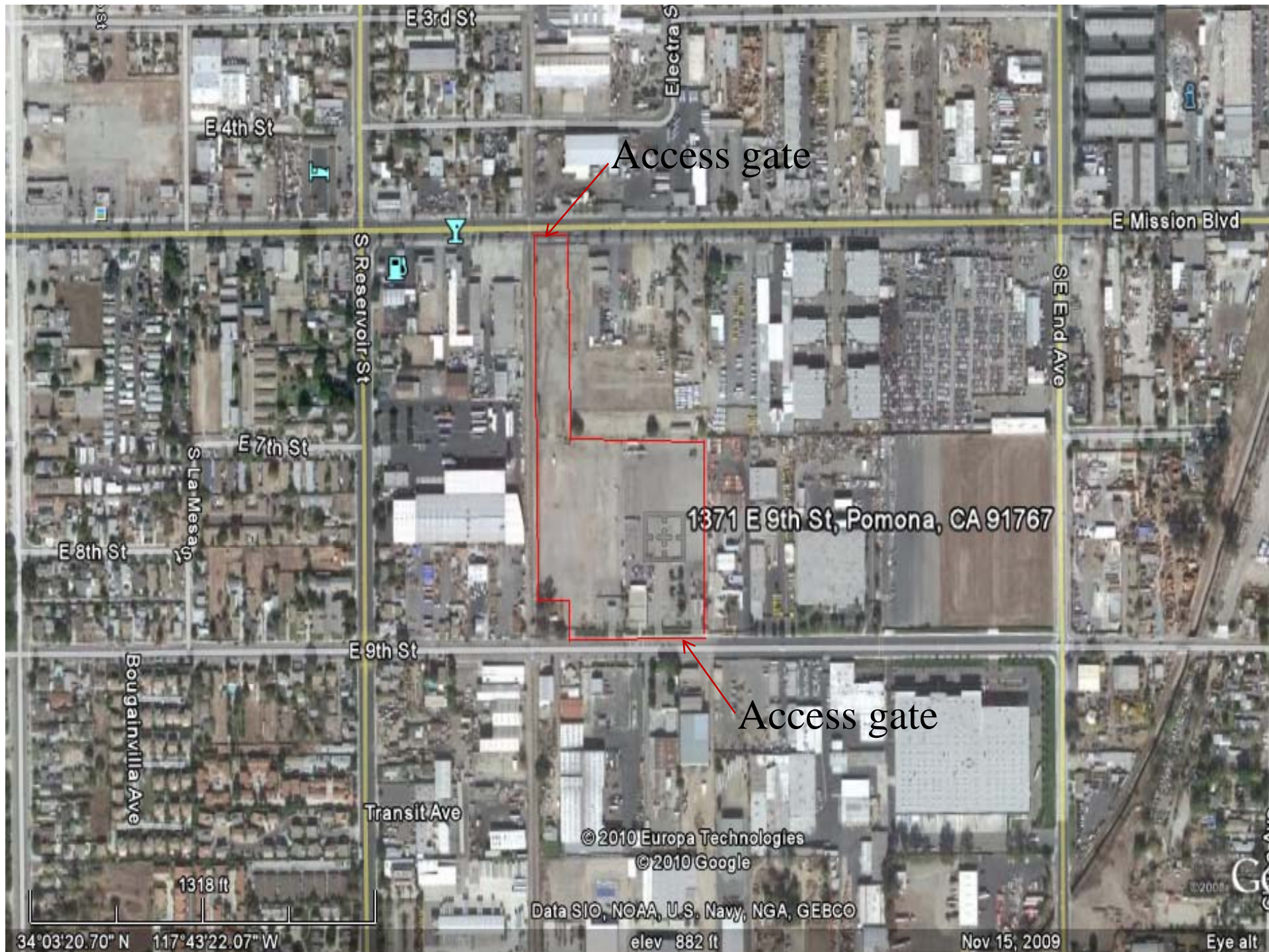
PROPOSED FACILITY OVERVIEW

Status of following with regards to facility:

- DEIR - The DEIR was circulated for public review from March 23 to May 6, 2010
- Land Use Permit - Not available, application is being processed by City of Pomona
- SWFP – Not available, application is being processed by the Local Enforcement Agency
- Other Permits - Not Available

PROJECT VICINITY







PROCESSING CAPACITY/ WASTE TYPES

- Maximum Proposed permitted capacity is 1500 TPD.
- Anticipated Average Annual loading is 438,000 Tons per year (1200 TPD).
- It primarily collects municipal solid waste, C & D Inert debris and yard waste.
- Anticipated diversion rate up to 5 %.
- Only Non-Hazardous material is accepted.



PROPOSED OPERATING HOURS

Public/Business Hours:

Monday - Friday 6:00 am to 6:00 pm.

Saturdays 7:00 am to 2:00 pm.

Sundays CLOSED

BUILDING AREA ANALYSIS

PROPOSED BUILDINGS	AREA
TRANSFER STATION	55,531 S.F.
MAINTENANCE	5,000 S.F.
OFFICE	8,000 S.F.
SELF-HAUL	8,144 S.F.
LOAD-OUT TUNNEL	6,537 S.F.
SCALE HOUSE	100 S.F.
TOTAL	83,382 S.F.

PARKING ANALYSIS

PARKING REQUIRED	AREA	RATIO	STALLS
TRANSFER STATION	55,531 S.F.	1:1000	55.5
MAINTENANCE	5,000 S.F.	1:250	20.0
OFFICE	8,000 S.F.	1:250	32.0
SELF-HAUL	8,144 S.F.	1:1000	8.1
LOAD-OUT TUNNEL	6,537 S.F.	N/A	N/A
SCALE HOUSE	100 S.F.	1:250	0.4
TOTAL STALLS REQUIRED			116.0

PARKING PROVIDED

STANDARD STALLS	
HANDICAP ACCESSIBLE STALLS	
TOTAL STALLS	
TRANSFER TRUCK STALLS	
COLLECTION TRUCK STALLS	
TOTAL TRUCK STALLS	

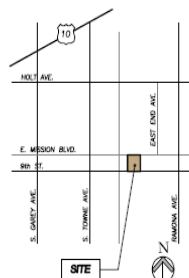
SITE AREA ANALYSIS

BUILDING	73,398 S.F.	16.0 %
PARKING/CIRCULATION	293,017 S.F.	64.1 %
LANDSCAPE	85,746 S.F.	18.7 %
HARDSCAPE	3,309 S.F.	0.2 %
GROSS SITE	455,380 S.F.	100.0 %

LEGEND

- BUILDING AREA
- LANDSCAPING
- CONCRETE
- TRAFFIC
- DECORATIVE CONCRETE
- SCALE
- SITE

VICINITY MAP



0 25' 50' 100' 200'

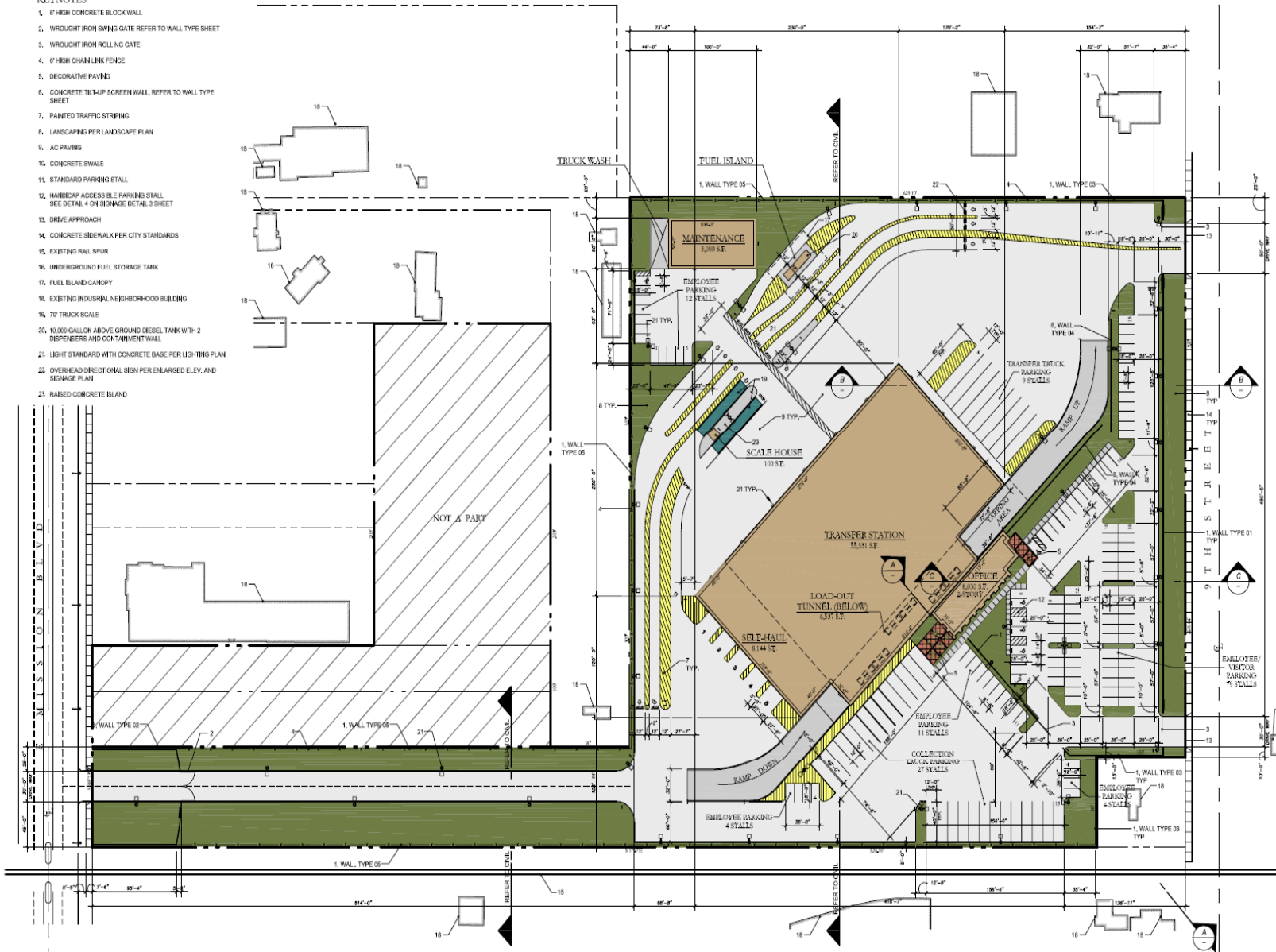
SCALE: 1" = 50'-0"

PROJECT # 3048

ALTERNATIVE RAMP LAYOUT

KEYNOTES

- 6" HIGH CONCRETE BLOCK WALL
- WROUGHT IRON SWING GATE REFER TO WALL TYPE SHEET
- WROUGHT IRON ROLLING GATE
- 6" HIGH CHAIN LINK FENCE
- DECORATIVE PAVING
- CONCRETE TILT-UP SCREEN WALL, REFER TO WALL TYPE SHEET
- PAINTED TRAFFIC STRIPING
- LANDSCAPING PER LANDSCAPE PLAN
- AC PAVING
- CONCRETE SWALE
- STANDARD PARKING STALL
- HANDICAP ACCESSIBLE PARKING STALL SEE DETAIL 4 ON SIGNAGE DETAIL 3 SHEET
- DRIVE APPROACH
- CONCRETE SIDEWALK PER CITY STANDARDS
- EXISTING RAIL SPUR
- UNDERGROUND FUEL STORAGE TANK
- FUEL ISLAND CANDORY
- EXISTING INDUSTRIAL NEIGHBORHOOD BUILDING
- 70' TRUCK SCALE
- 10,000 GALLON ABOVE GROUND DIESEL TANK WITH 2 DISPENSERS AND CONTAINMENT WALL
- LIGHT STANDARD WITH CONCRETE BASE PER LIGHTING PLAN
- OVERHEAD DIRECTIONAL SIGN PER ENLARGED ELEV. AND SIGNAGE PLAN
- RAISED CONCRETE ISLAND



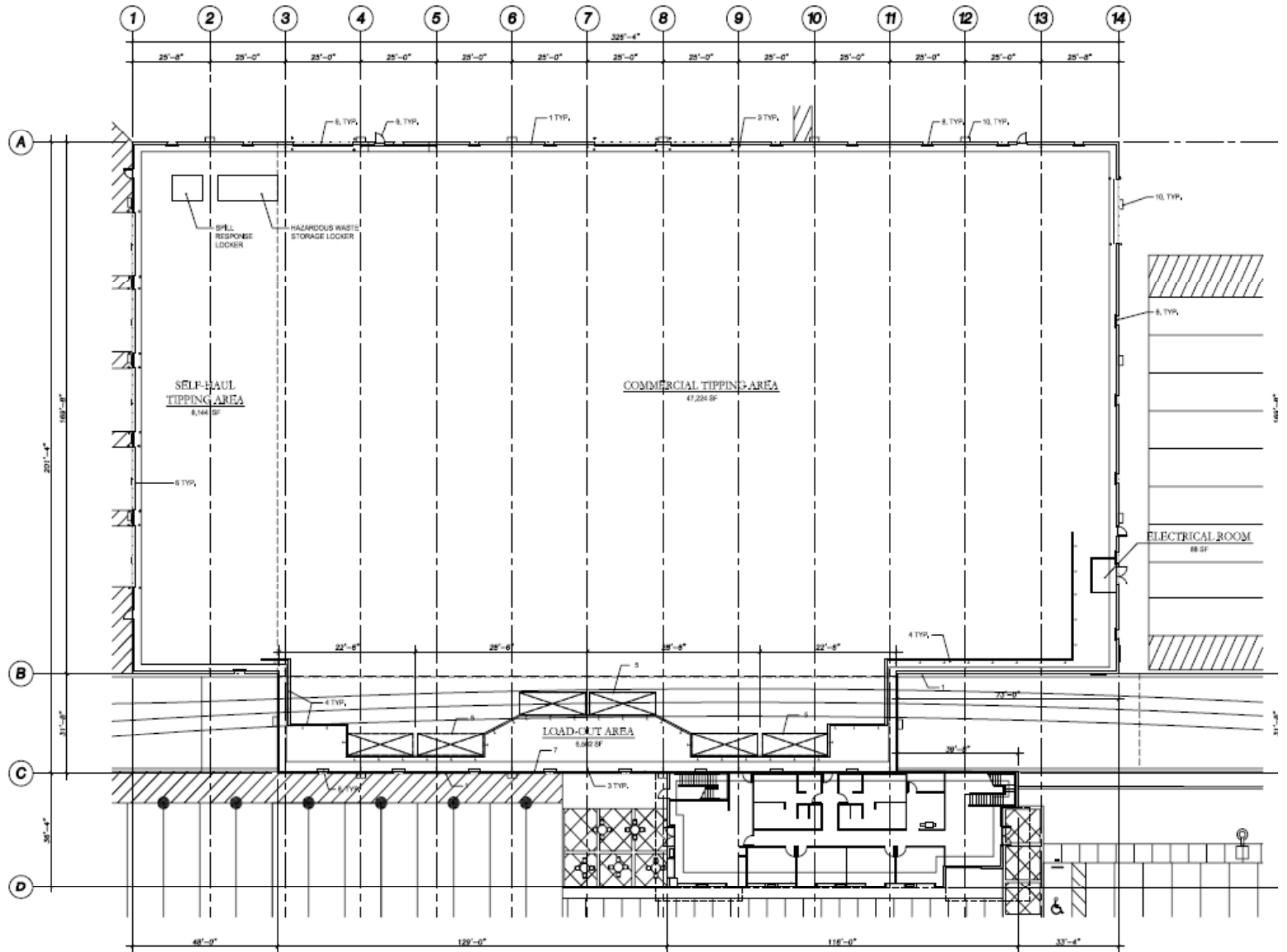
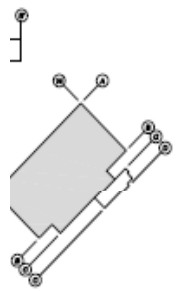
POMONA VALLEY TRANSFER STATION

1371 9TH STREET
POMONA, CALIFORNIA

SITE PLAN
19 JUNE 2008

1. 1/2" UP WALL PANEL
 2. PANEL
 3. COLUMN
 4. WALL
 5. DET
 6. DR
 7. DW
 8. LOUVER, SEE VENTILATION
 9. ADDITIONAL INFORMATION

1. LOCATION LOCATED ON ROOF OF
 TATION
 2. ITEM PROVIDED AT TRANSFER AREA
 3. OF LOAD-OUT TUNNEL



POMONA VALLEY TRANSFER STATION

1" = 40'

PROJECT # 3048

Role of The Local Task Force

[California Public Resources Code , Section 40950]

- To ensure a coordinated and cost-effective regional recycling system, the Task Force shall do all of the following:
 1. Identify solid waste management issue of countywide or regional concern.
 2. Determine the need for solid waste collection and transfer system, processing facilities, and marketing strategies that can serve more than one local jurisdiction within the region.
 3. Facilitate the development of multijurisdictional arrangements of the marketing of recyclable materials.
 4. To the extent possible, facilitate resolution of conflicts and inconsistencies between or among city and county and county source reduction and recycling elements.
- To develop goals, policies, and procedure which are consistent with guidelines and regulations adopted by the CalRecycle, to guide the development of the siting element of the countywide integrated waste management plan.



Role of The Local Task Force

[Los Angeles County Code, Chapter 3.67.080]

- Investigate complaints of nonconformance
- Review proposed facilities/services for conformance
- Monitor, analyze, review and /or propose legislative bills as needed
- Recommend policy on matters involving County Solid Waste Management Plan



ROLE OF THE LOCAL TASK FORCE SPECIFIC TO NDFES

[California Code of Regulations, Title 14, Section 18761 (b)]

- Advise jurisdictions responsible for NDFE preparation
- Review goals, policies and procedures for jurisdictions
- Upon implementation, aid in meeting County's Solid Waste Management needs. (PRC 41780)

(b)(1)

- Assist and advise in review of NDFE
- Assist jurisdictions in the implementation of NDFE

(b)(2)

- Provide technical guidance and info regarding recycling to local jurisdictions during preparation and revision of NDFE.
- Present related info to the public at public hearings upon request by local government/local organizations.



STAFF FINDINGS

The proposed NDFE Amendment :

1. Conforms with Countywide Integrated Waste Management Plan
 - Incorporating Pomona Valley Transfer Station will not impair solid waste management activities in Los Angeles County
2. Complies with Environmental Regulations.
 - Amending the NDFE is not subject to environmental review. Therefore, no environmental document was prepared.



STAFF FINDINGS

The proposed NDFE Amendment :

3. Complies with State Law and Regulations
 - The amendment complies with the facility description requirements in State regulations (Section 18752 et seq, Title 14 of the California Code of Regulations)
 - Facility is in conformance with the identification provision of PRC Section 50001(a)(2).



STAFF RECOMMENDATION

- Concur with the subject amendment to the City of Pomona's NDFE to incorporate Pomona Valley Transfer Station.
- Request the facility owner/operator to submit monthly reports on a quarterly basis.

Questions?

