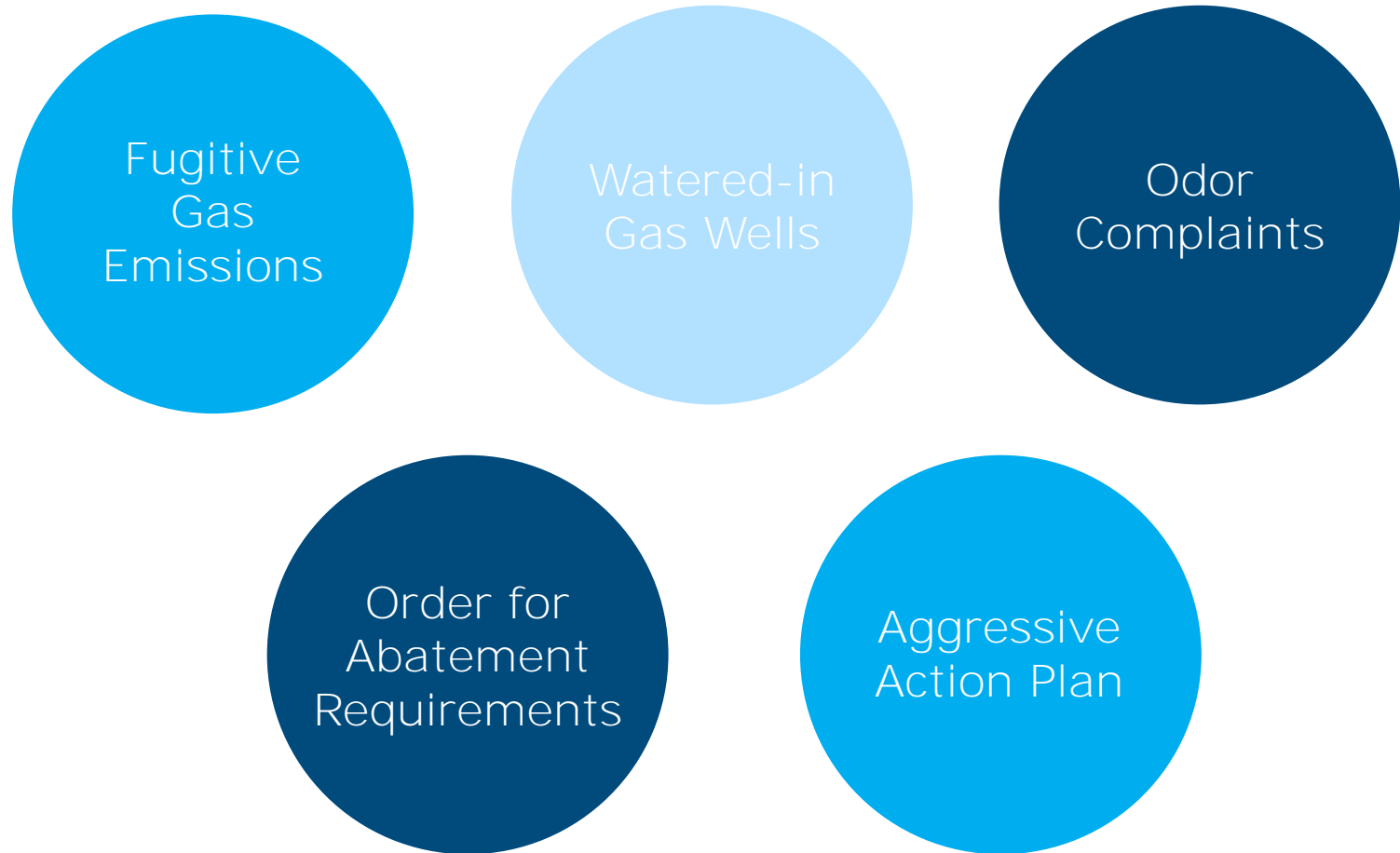


2017 Sunshine Canyon Landfill Action Plan

Los Angeles County
Solid Waste Management Committee
Integrated Waste Management Task Force
November 16, 2017

Rob Sherman – General Manager
Michael Beaudoin – Corporate Director Remedial Projects

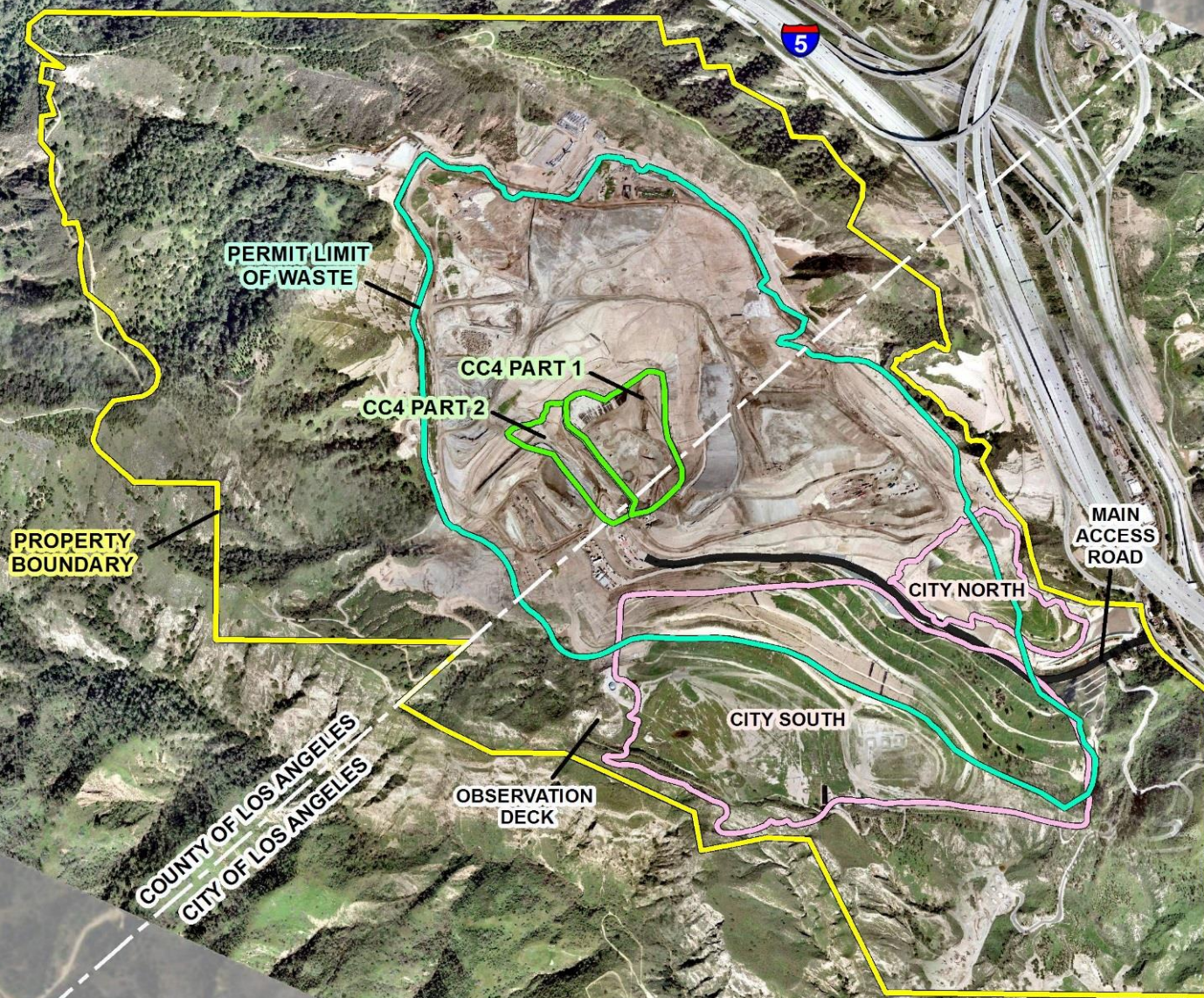
March 2017 Site Status



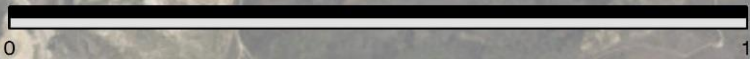
Goal and Actions

- **Goal:** Eliminate offsite odor
- **Actions:**
 - Collect and control landfill gas
 - Control potential waste odors on site
 - Reduce conditions for future potential odors

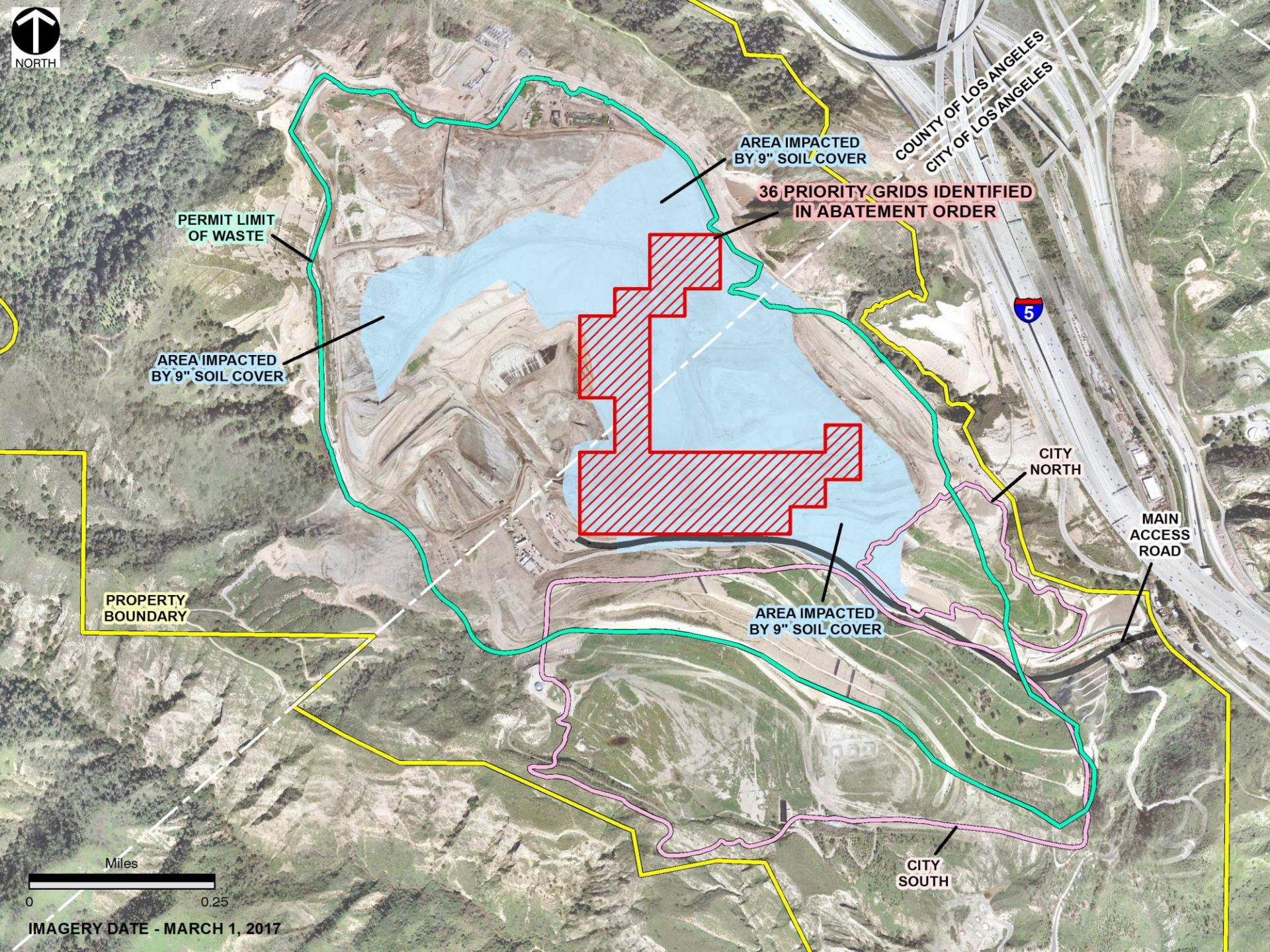




Miles



IMAGERY DATE - MARCH 1, 2017



PERMIT LIMIT
OF WASTE

AREA IMPACTED
BY 9" SOIL COVER

AREA IMPACTED
BY 9" SOIL COVER

36 PRIORITY GRIDS IDENTIFIED
IN ABATEMENT ORDER

COUNTY OF LOS ANGELES
CITY OF LOS ANGELES



CITY NORTH

MAIN
ACCESS
ROAD

PROPERTY
BOUNDARY

AREA IMPACTED
BY 9" SOIL COVER

CITY SOUTH



IMAGERY DATE - MARCH 1, 2017

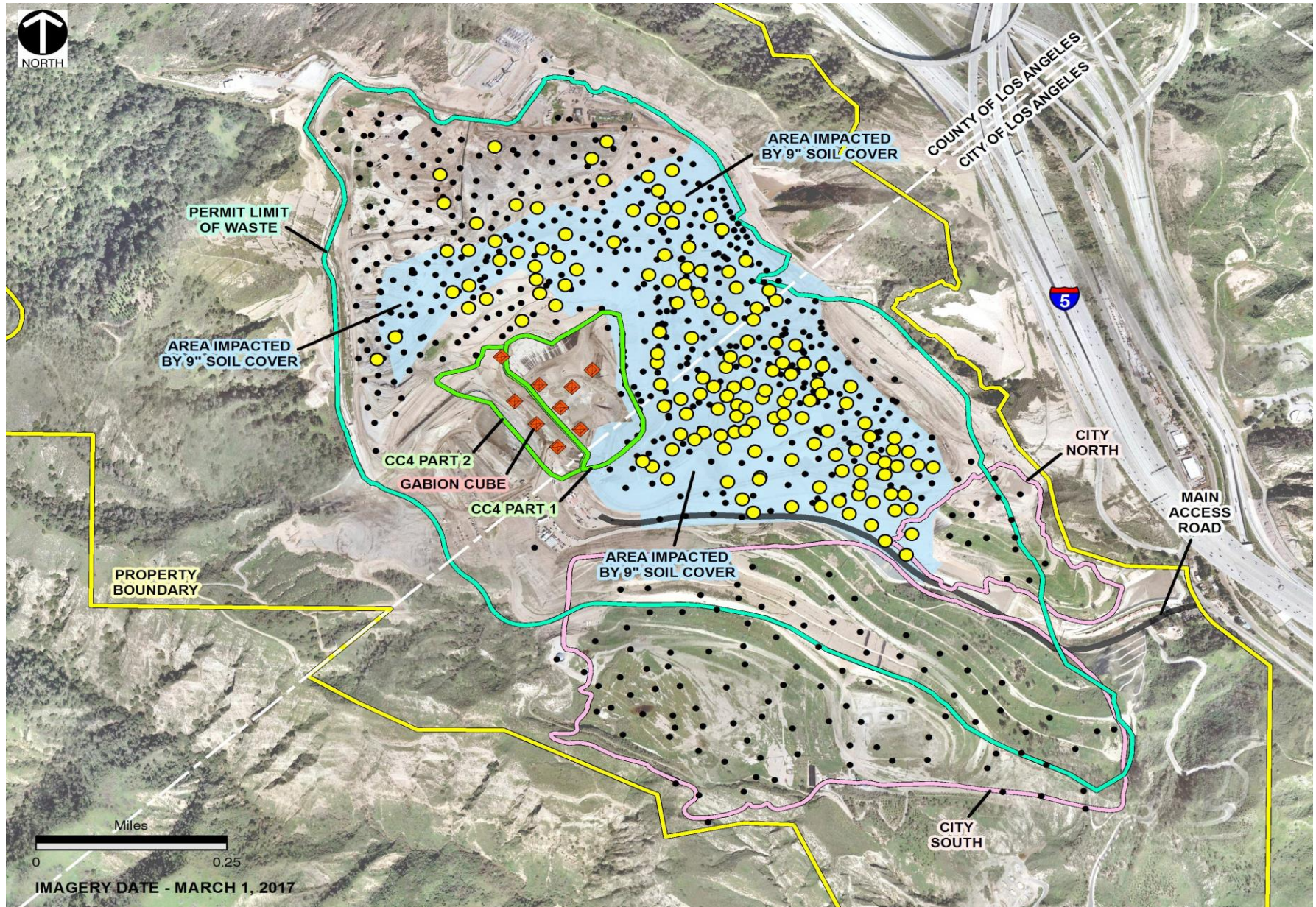
What We Have Done

SUNSHINE CANYON
Landfill

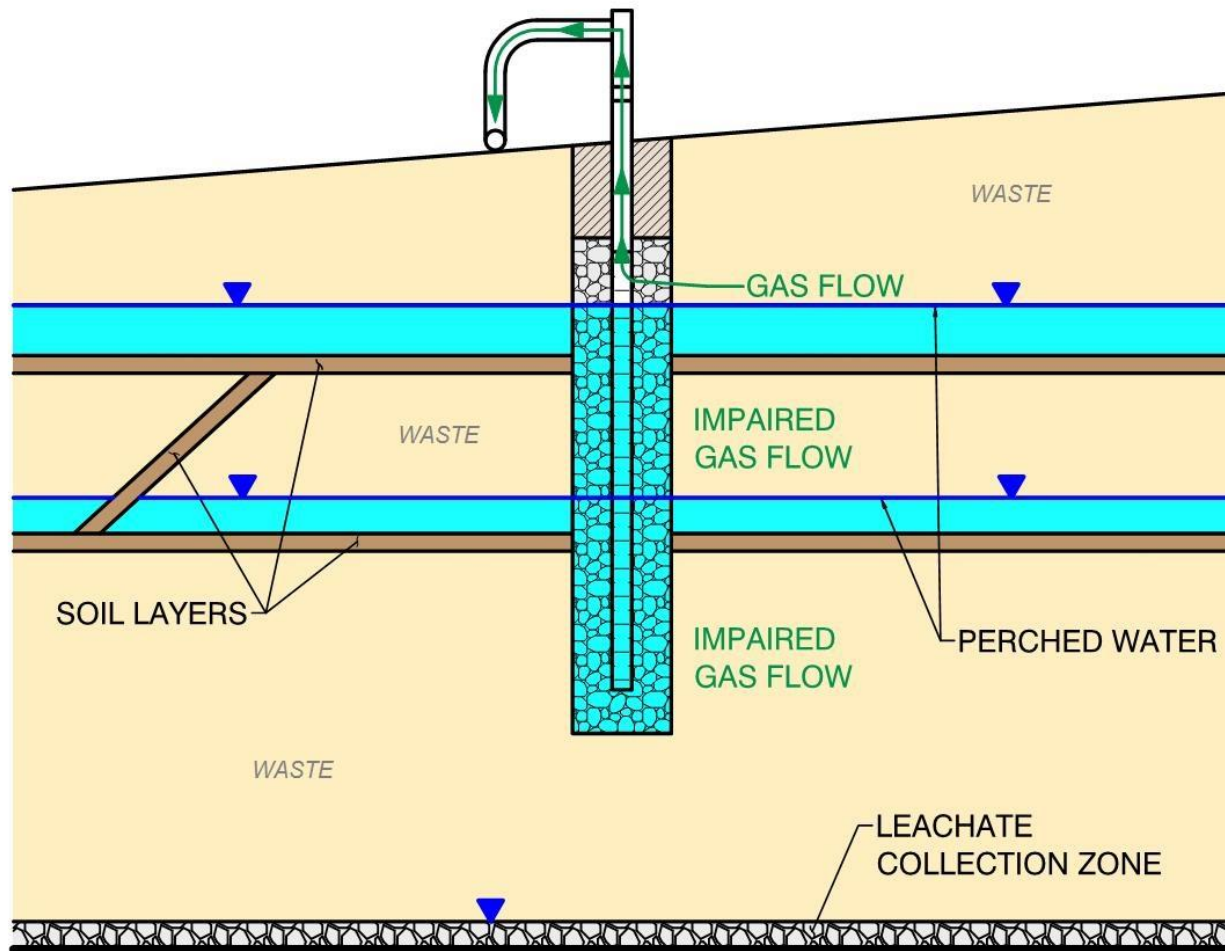
Action Plan Checklist

Action	Status	Current Progress
Add or replace more than 150 gas wells	Completed Ahead of Schedule	153 gas wells replaced or installed
Install pumps in more than 250 gas wells	Completed Ahead of Schedule	253 pumps installed in gas wells
Apply 37 acres of intermediate spray-on cover	Completed Ahead of Schedule	38.5 acres spray-on cover applied
Install 21 acres of closure turf	Completed Ahead of Schedule	21 acres of closure turf installed
Prepare soil and seed 57 acres of vegetative cover	On Schedule (December 31)	Topsoil is being placed now
Increase organics diversion	Ongoing	Transfer station program ongoing
Begin on-site direct application of neutralizer at working face	Completed Ahead of Schedule	Neutralizer equipment installed and operational
Transfer station neutralizer application program fully implemented	Completed Ahead of Schedule	All area transfer stations implemented program
Install gabion cubes in cell CC4 Part 1 and 2	Completed Ahead of Schedule	9 gabion cubes installed

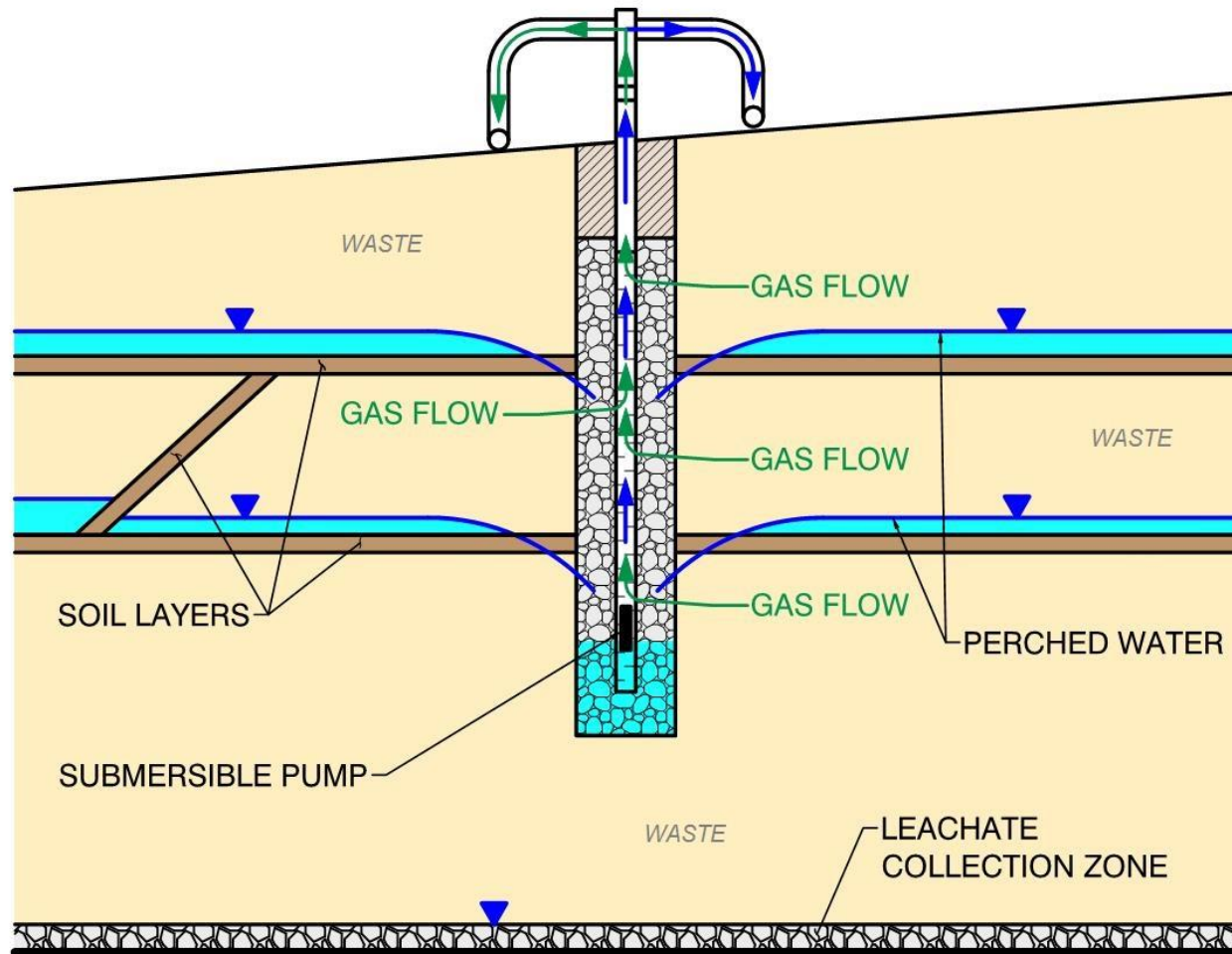
153 New and Replacement Gas Wells



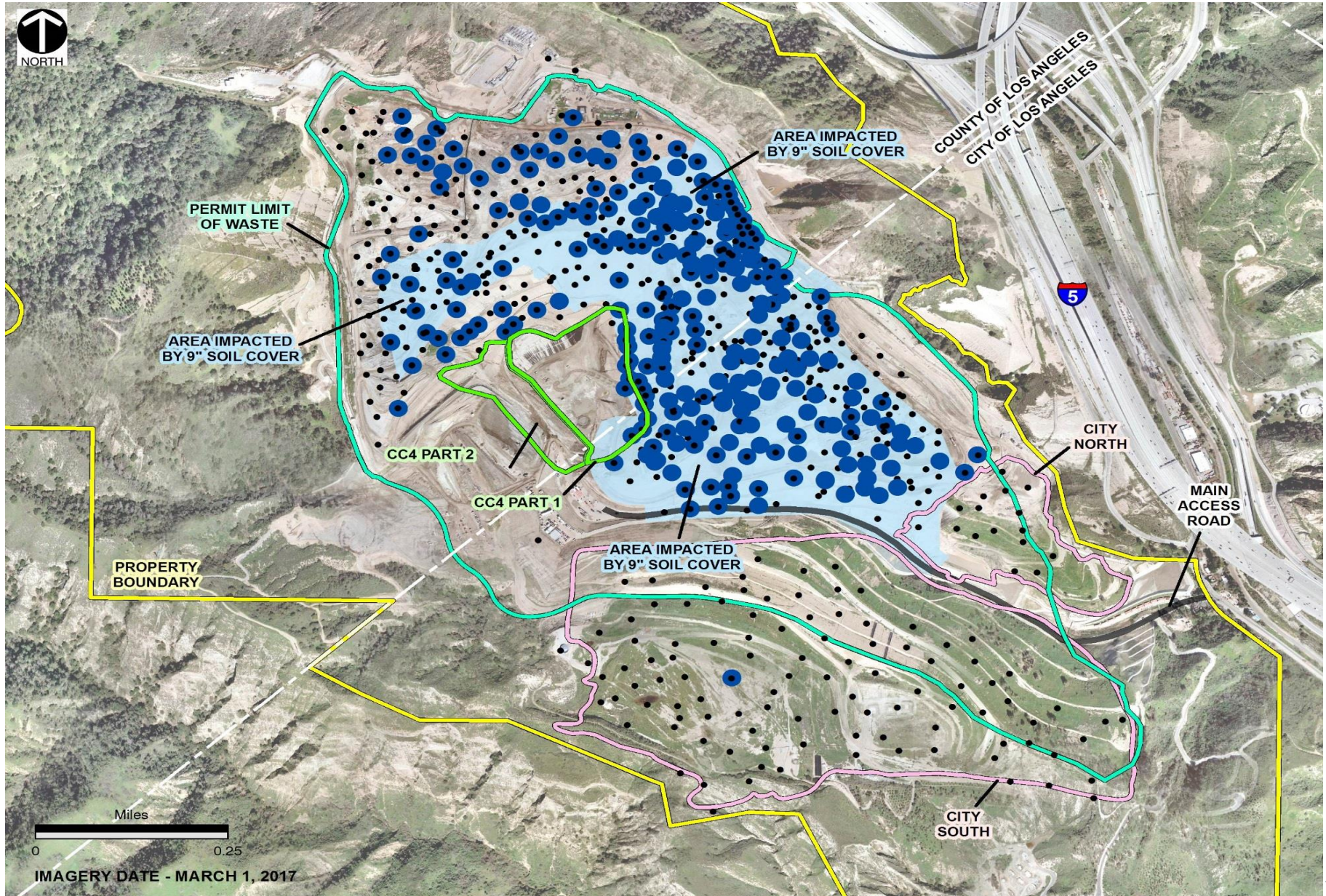
Conditions that Impaired Gas Removal



Dewatering Pump Installation



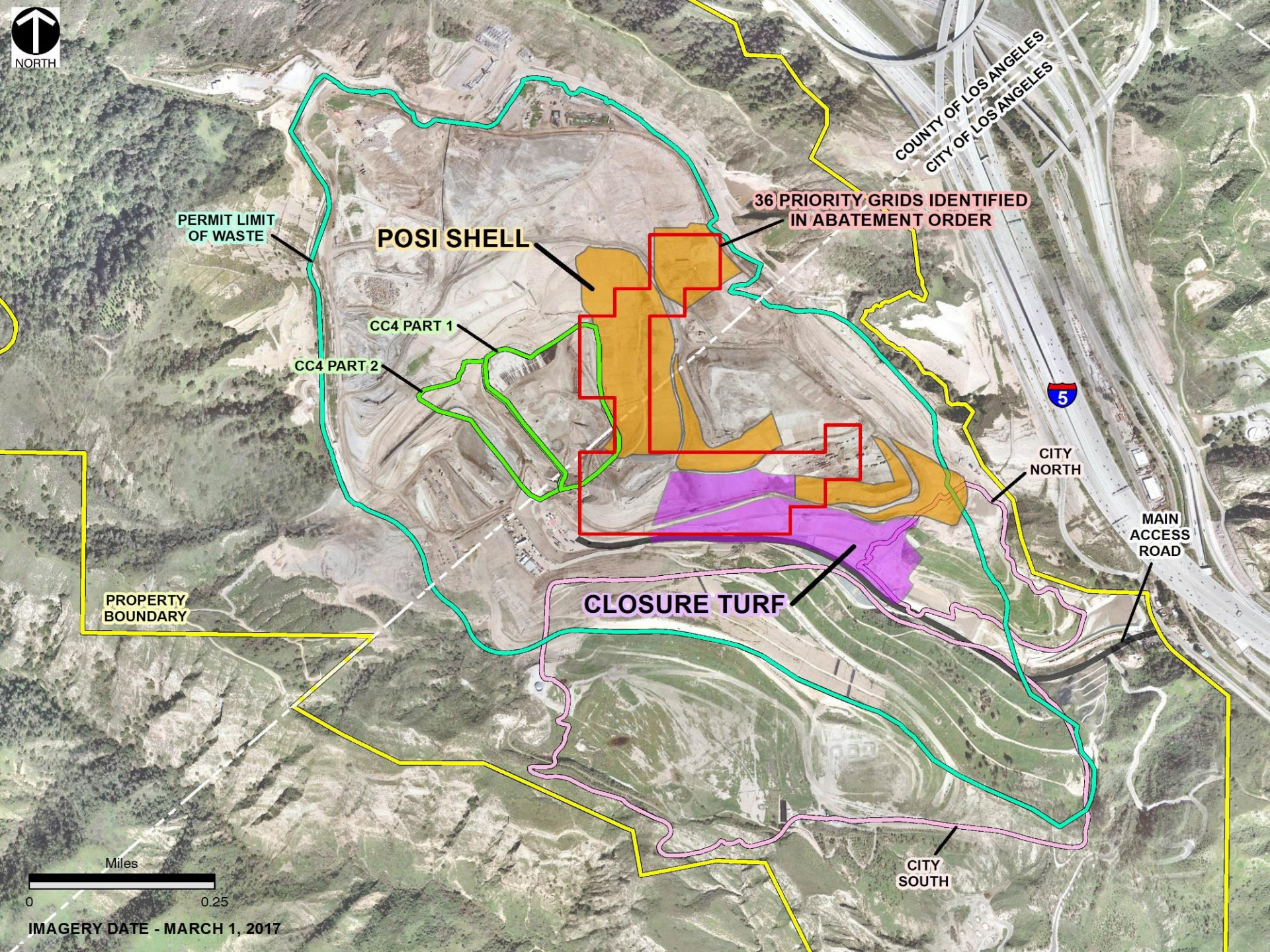
253 Gas Well Pumps



Enhanced Intermediate Cover

- Promotes more gas collection
- Three intermediate covers were selected:
 1. Intermediate spray-on cover
 2. Closure Turf
 3. Vegetative cover





PERMIT LIMIT
OF WASTE

POSI SHELL

36 PRIORITY GRIDS IDENTIFIED
IN ABATEMENT ORDER

CC4 PART 1

CC4 PART 2

PROPERTY
BOUNDARY

CLOSURE TURF

COUNTY OF LOS ANGELES
CITY OF LOS ANGELES

5

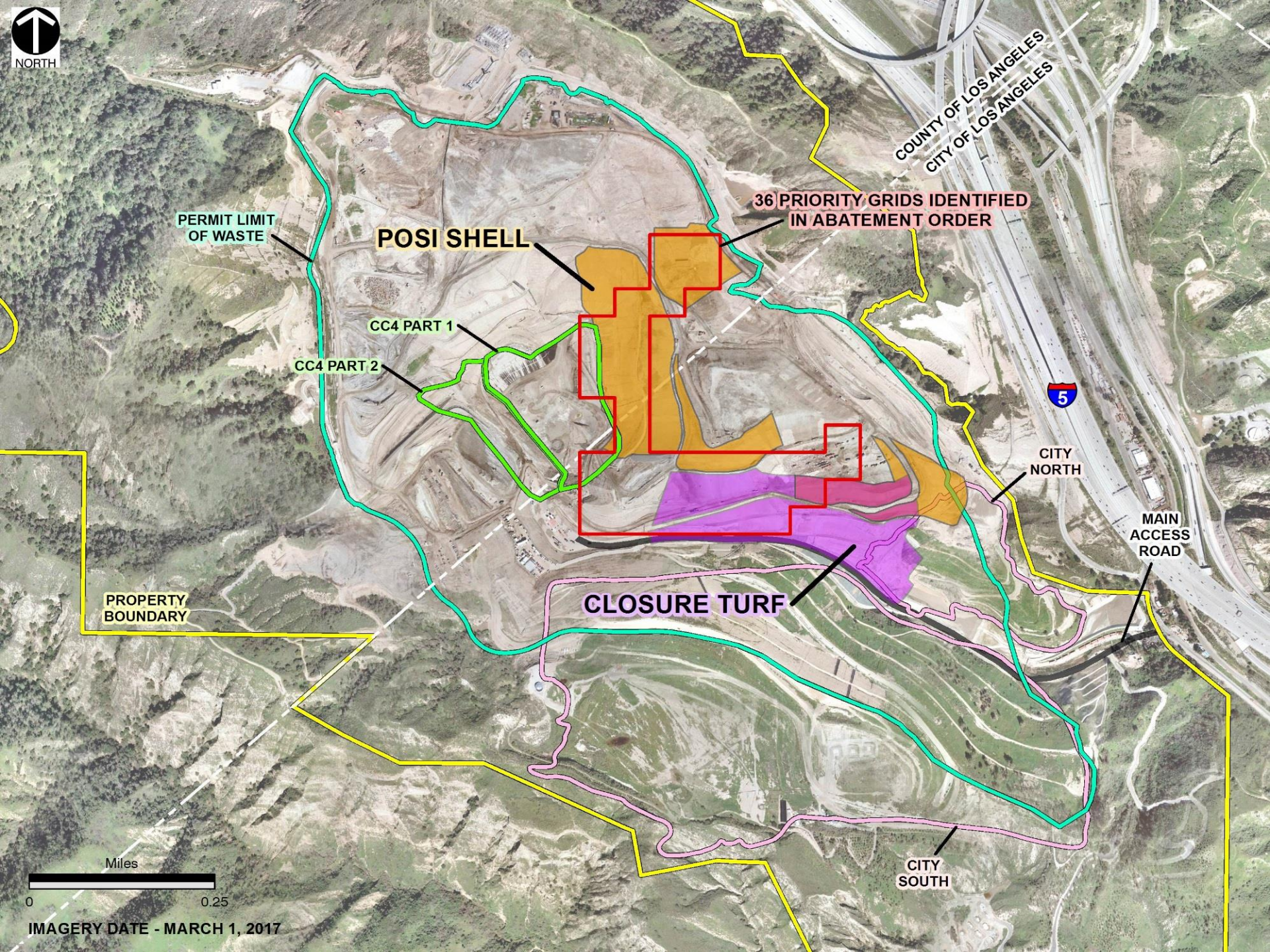
CITY NORTH

MAIN
ACCESS
ROAD

CITY SOUTH

Miles

0 0.25
IMAGERY DATE - MARCH 1, 2017



COUNTY OF LOS ANGELES
CITY OF LOS ANGELES

36 PRIORITY GRIDS IDENTIFIED
IN ABATEMENT ORDER

POSI SHELL

CC4 PART 1

CC4 PART 2

PERMIT LIMIT
OF WASTE

PROPERTY
BOUNDARY

CLOSURE TURF

CITY NORTH

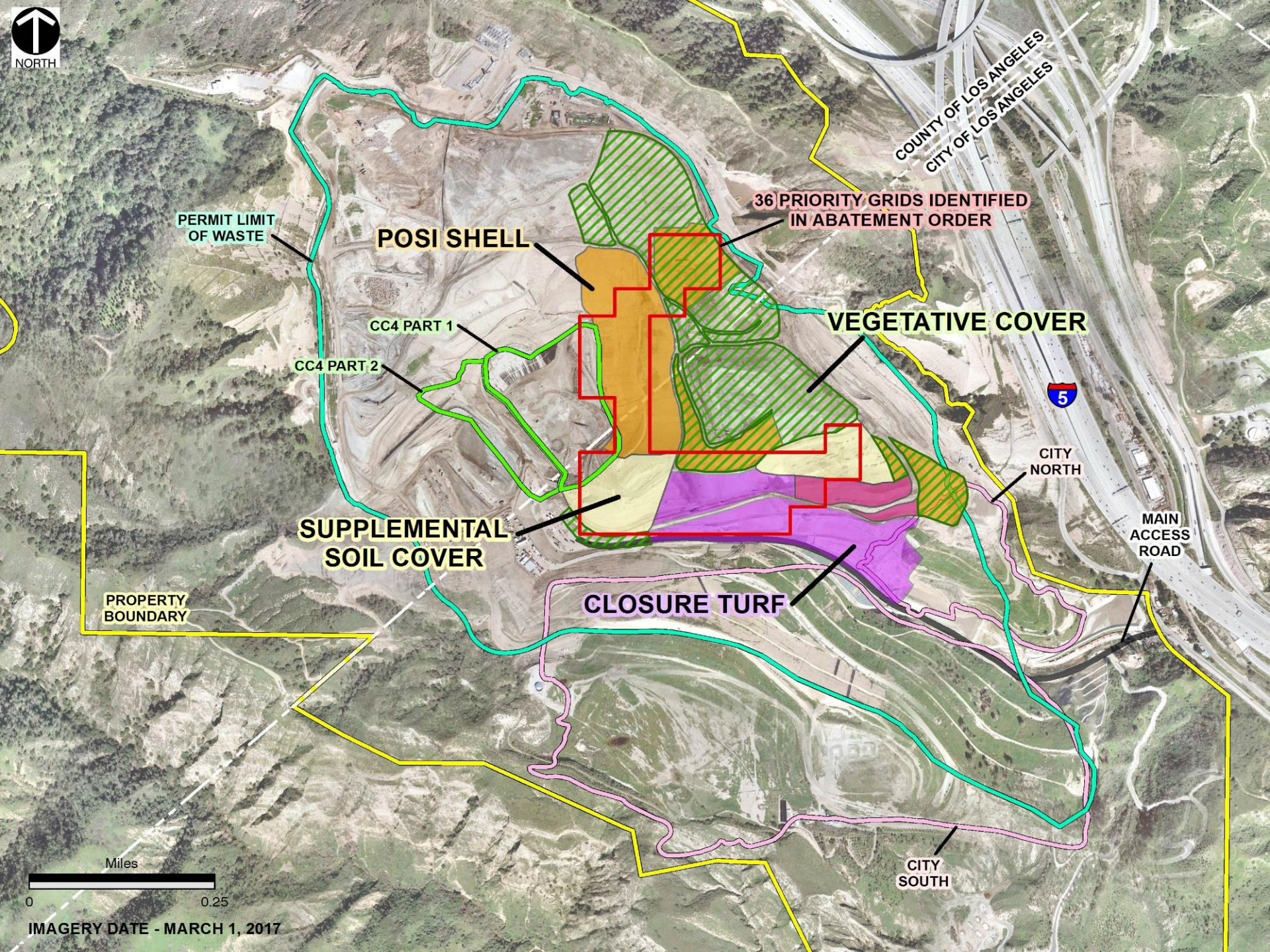
MAIN
ACCESS
ROAD

CITY SOUTH

Miles

0 0.25

IMAGERY DATE - MARCH 1, 2017



PERMIT LIMIT
OF WASTE

POSI SHELL

36 PRIORITY GRIDS IDENTIFIED
IN ABATEMENT ORDER

VEGETATIVE COVER

CC4 PART 1

CC4 PART 2

SUPPLEMENTAL
SOIL COVER

CLOSURE TURF

PROPERTY
BOUNDARY

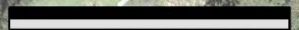


CITY NORTH

MAIN
ACCESS
ROAD

CITY SOUTH

Miles

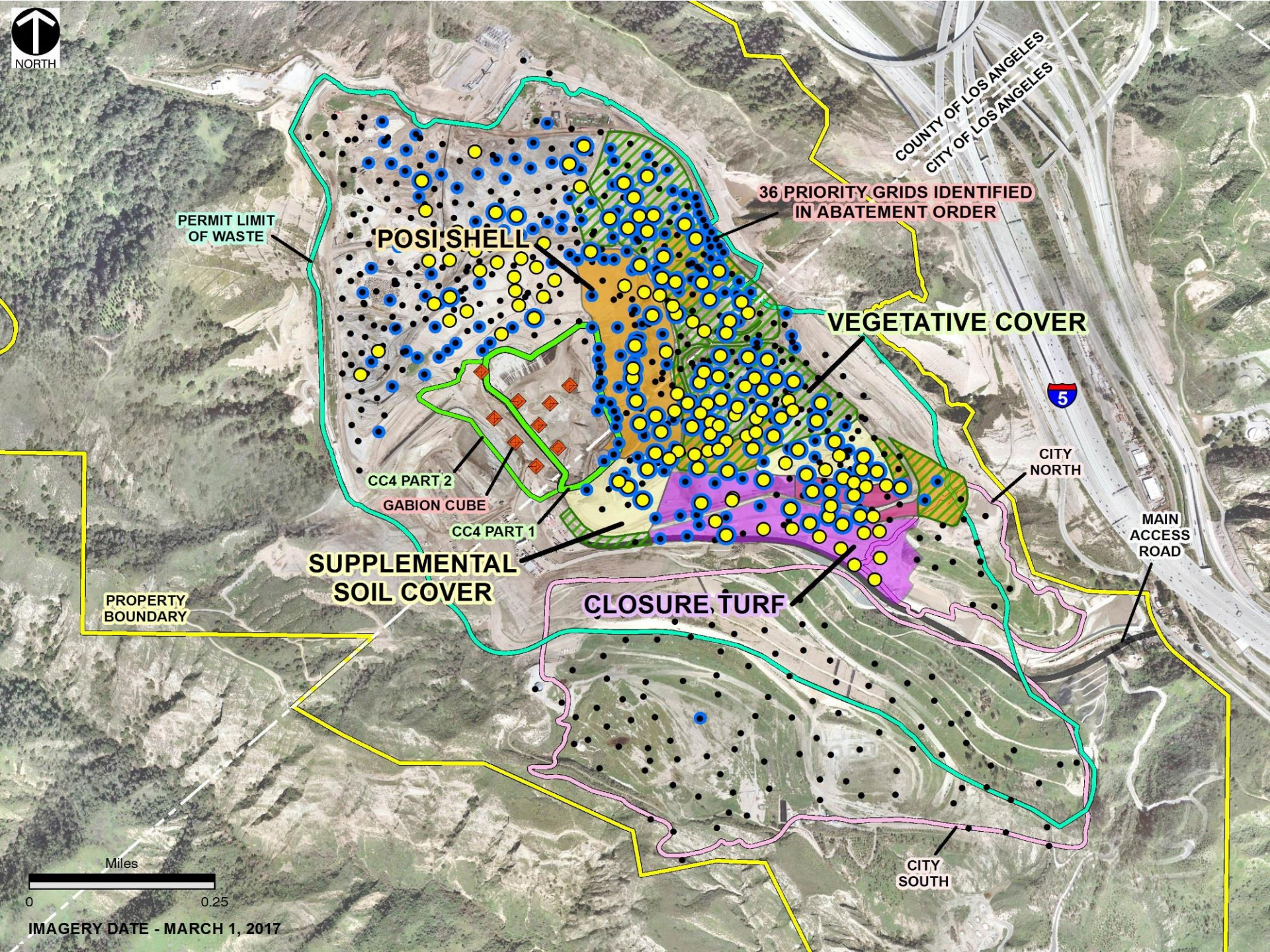


0 0.25

IMAGERY DATE - MARCH 1, 2017

October 2017 Enhanced Cover View





PERMIT LIMIT
OF WASTE

POSI-SHELL

36 PRIORITY GRIDS IDENTIFIED
IN ABATEMENT ORDER

VEGETATIVE COVER

CC4 PART 2

GABION CUBE

CC4 PART 1

SUPPLEMENTAL
SOIL COVER

CLOSURE TURF

PROPERTY
BOUNDARY

CITY NORTH

MAIN
ACCESS
ROAD

CITY SOUTH

Miles

0 0.25

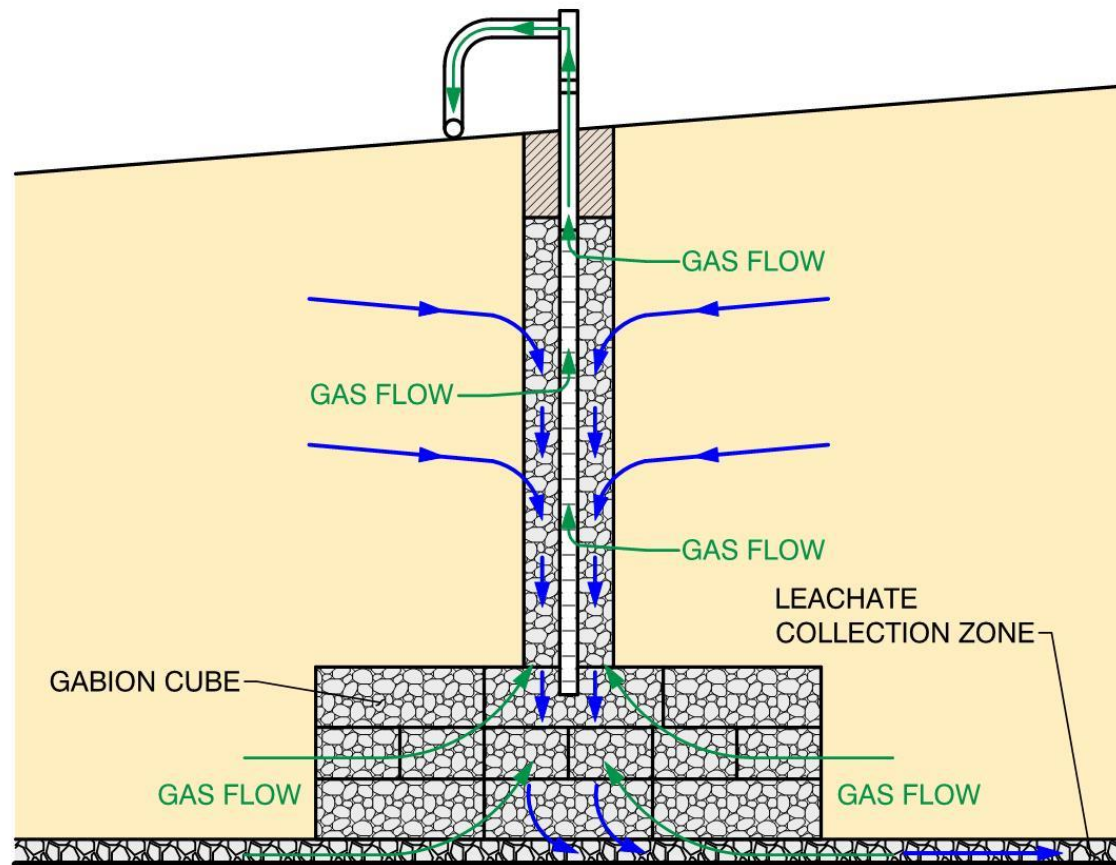
IMAGERY DATE - MARCH 1, 2017

Controlling Potential Waste Odors on-Site



Reducing Conditions for Future Potential Odors

New Landfill Cells



Gabion Cube Installation – New Cell

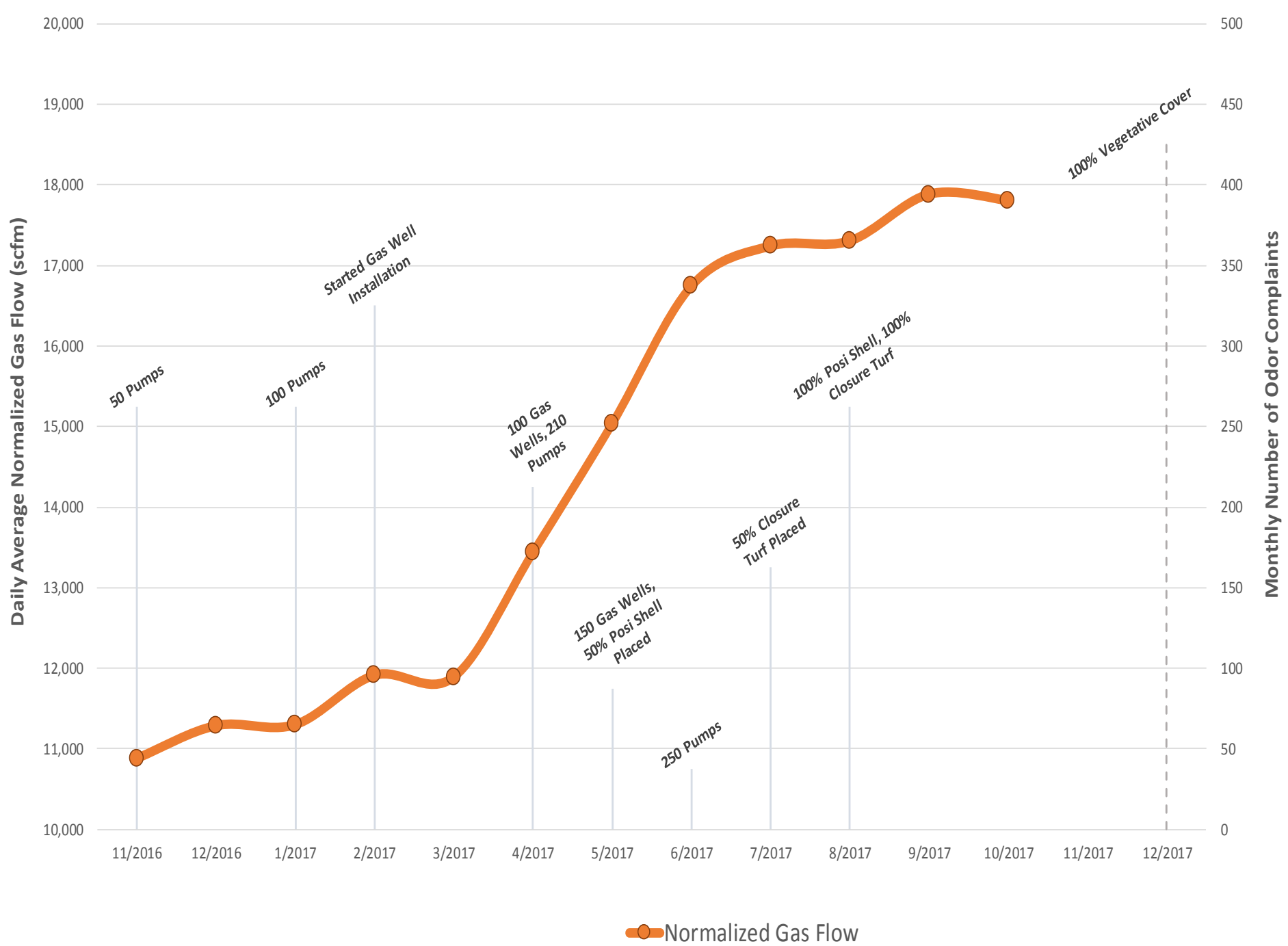


Odor Diligence



How is it Working?

SUNSHINE CANYON
Landfill





Future Commitments

SUNSHINE CANYON
Landfill



Community Outreach Continues

- Weekly e-Blast
 - Provides specific schedule updates and tracking of progress
- Expanded website with information updated weekly
 - Sunshinecanyon.com
- Quarterly Newsletters
- Neighborhood Group Outreach
 - Granada Hills Neighborhood Council
 - Community Advisory Committee

Thank You

SUNSHINE CANYON
Landfill