

# 2017 Sunshine Canyon Landfill Action Plan

Los Angeles County  
Solid Waste Management Committee  
Integrated Waste Management Task Force  
April 20, 2017

Rob Sherman – General Manager – Sunshine Canyon Landfill  
Elena Goodhall – Corporate Director Engineering, Field Operations

# What are we going to do?

- **Goal:** Eliminate offsite odor
- **Actions:**
  1. Collect and control landfill gas (Presented Today)
  2. Control waste odors on site
  3. Reduce conditions for future odors





# Sunshine Canyon Site Orientation



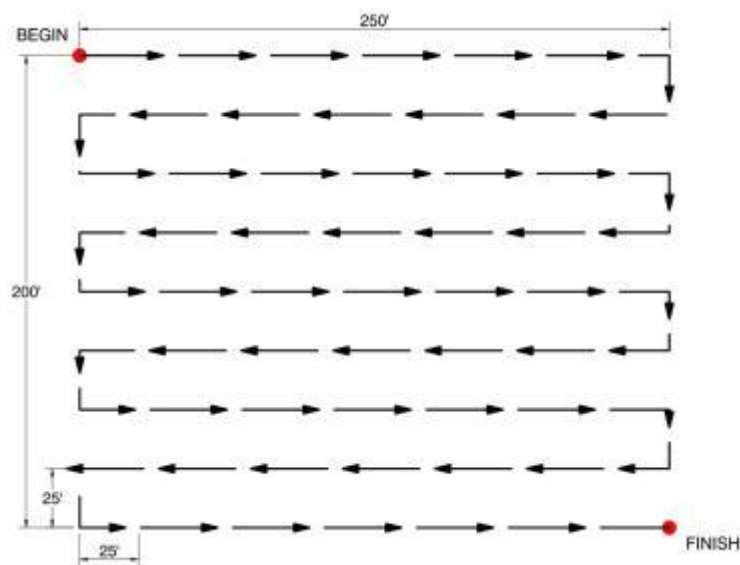
# Action #1: Collect and Control Landfill Gas

## Current Status

- Odors from fugitive gas emissions resulted from requirement to deviate from industry standard operating procedures
- Watered-in gas wells are presenting a new and extreme challenge to efficient gas collection
- The Order for Abatement, and our own additional measures, described herein, constitute a system augmentation to address unique conditions

# Fugitive Emissions Detected by Surface Scans

- Uncollected gas that diffuses through the cover and into the air
- Can be directly located with surface scans
- Monthly scans conducted to pinpoint fugitive emissions

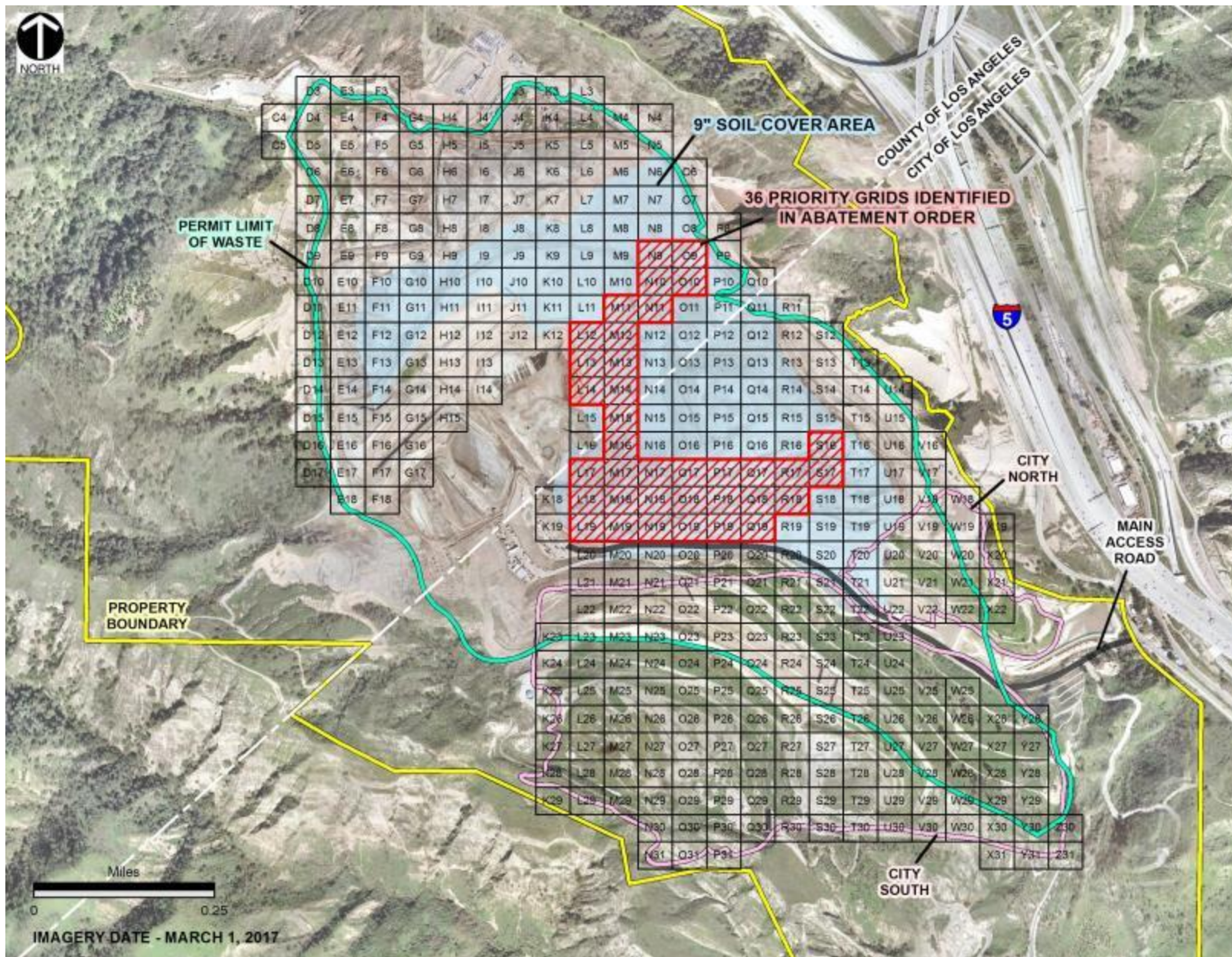


Typical grid scan route



Scan instrument





# Landfill Gas Odor Control

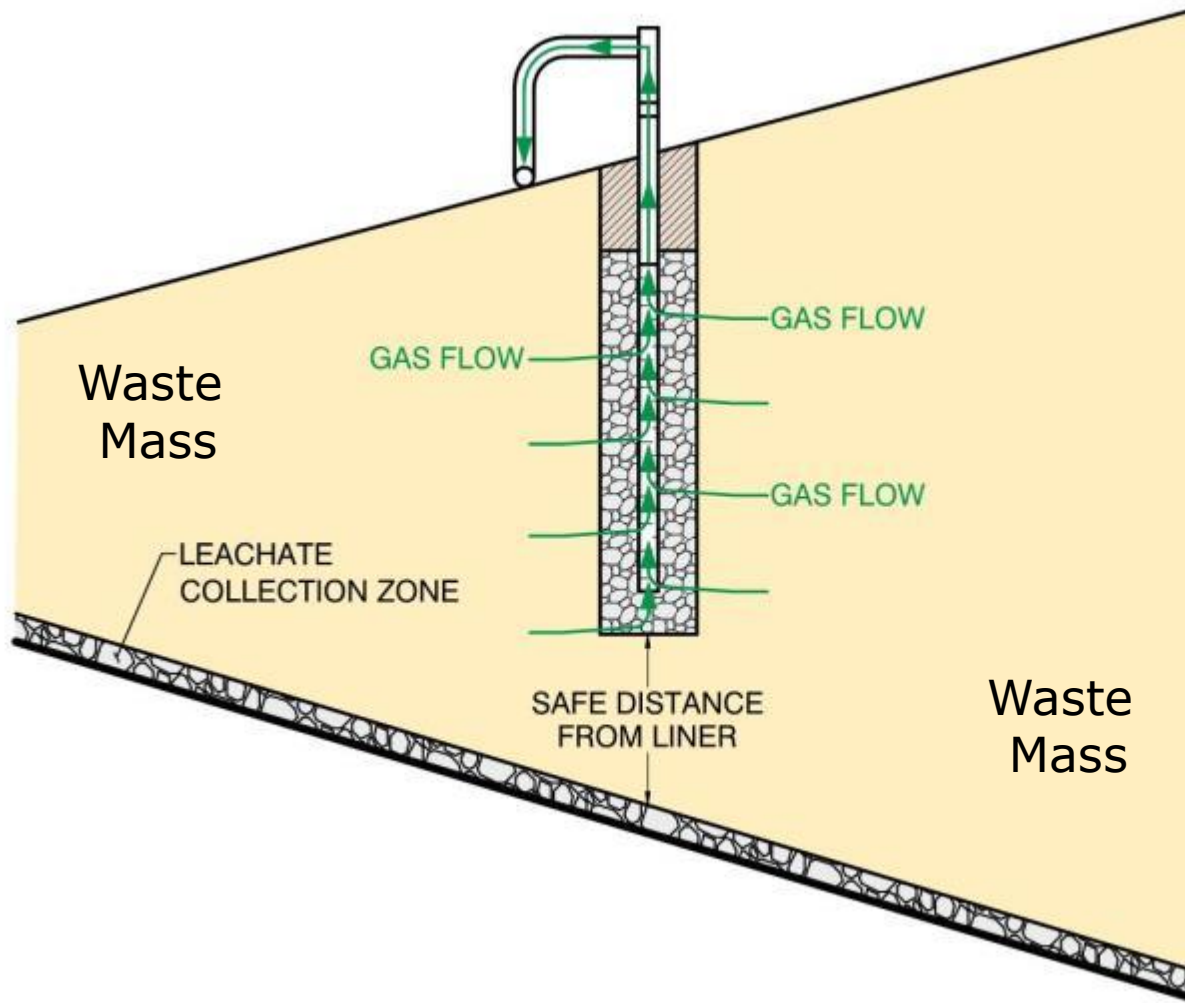
## **Primary Solution – Improve gas collection**

- Efficient gas collection with minimal cover is effective
- Adding or replacing more than 150 gas wells to improve coverage
- Adding pumps to over 250 gas wells (unusual need for Southern California landfills)

## **Secondary Solution – Enhanced cover**

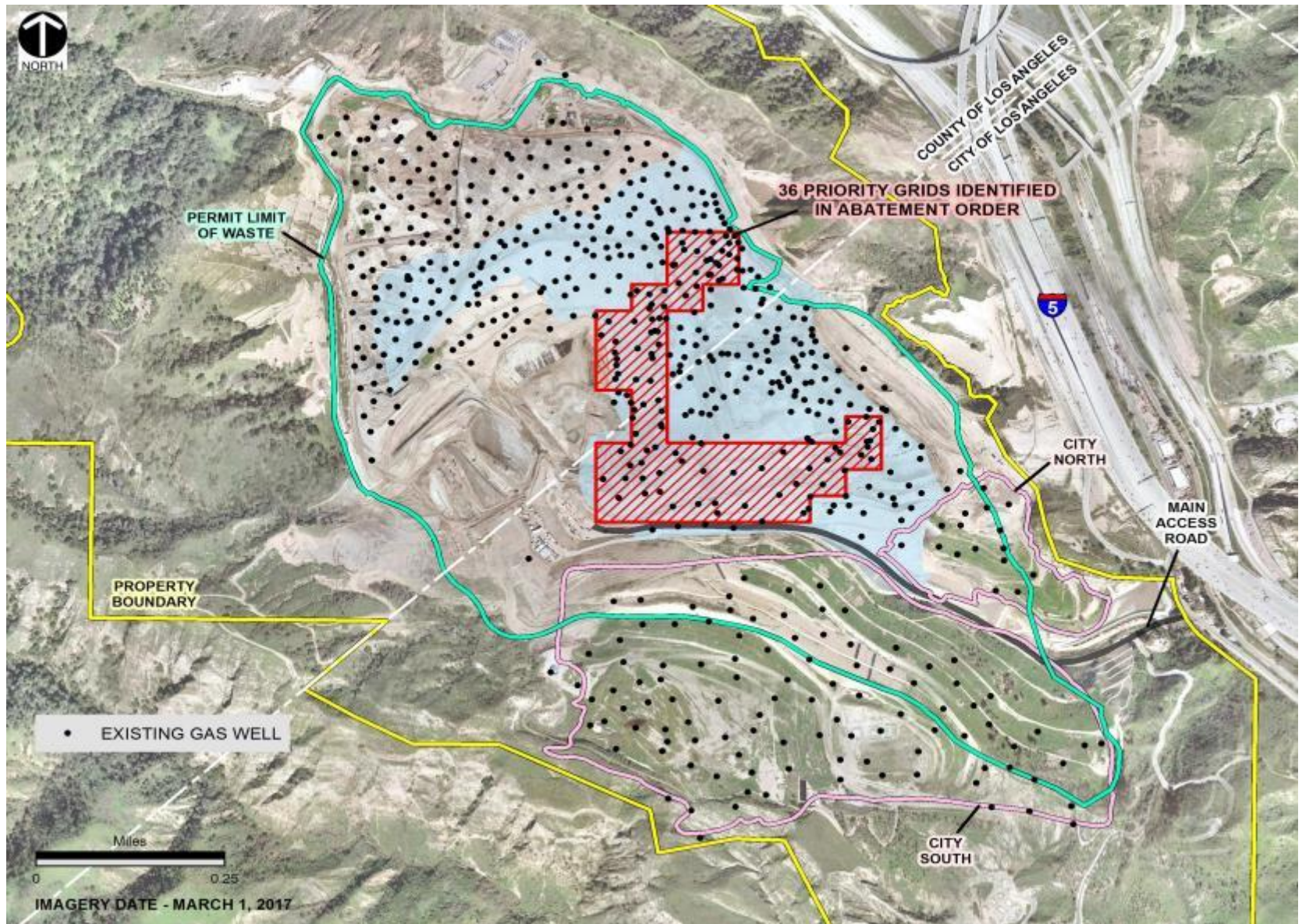
- No cover works well without efficient gas collection
- SCL always meets Federal and State cover requirements
- Enhance intermediate cover over 115 acres

# Proper Gas Well Operation



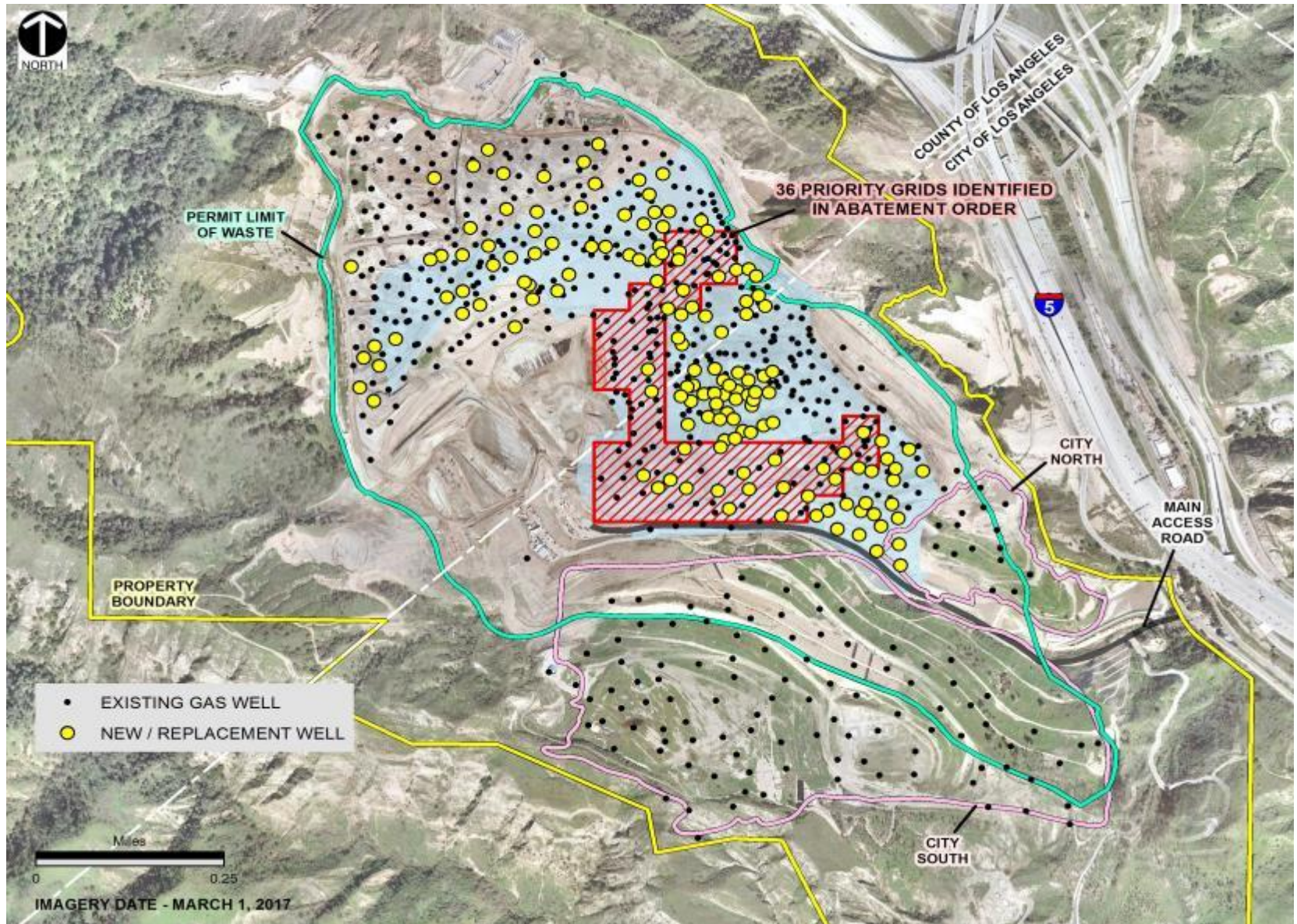


# Existing Gas Wells

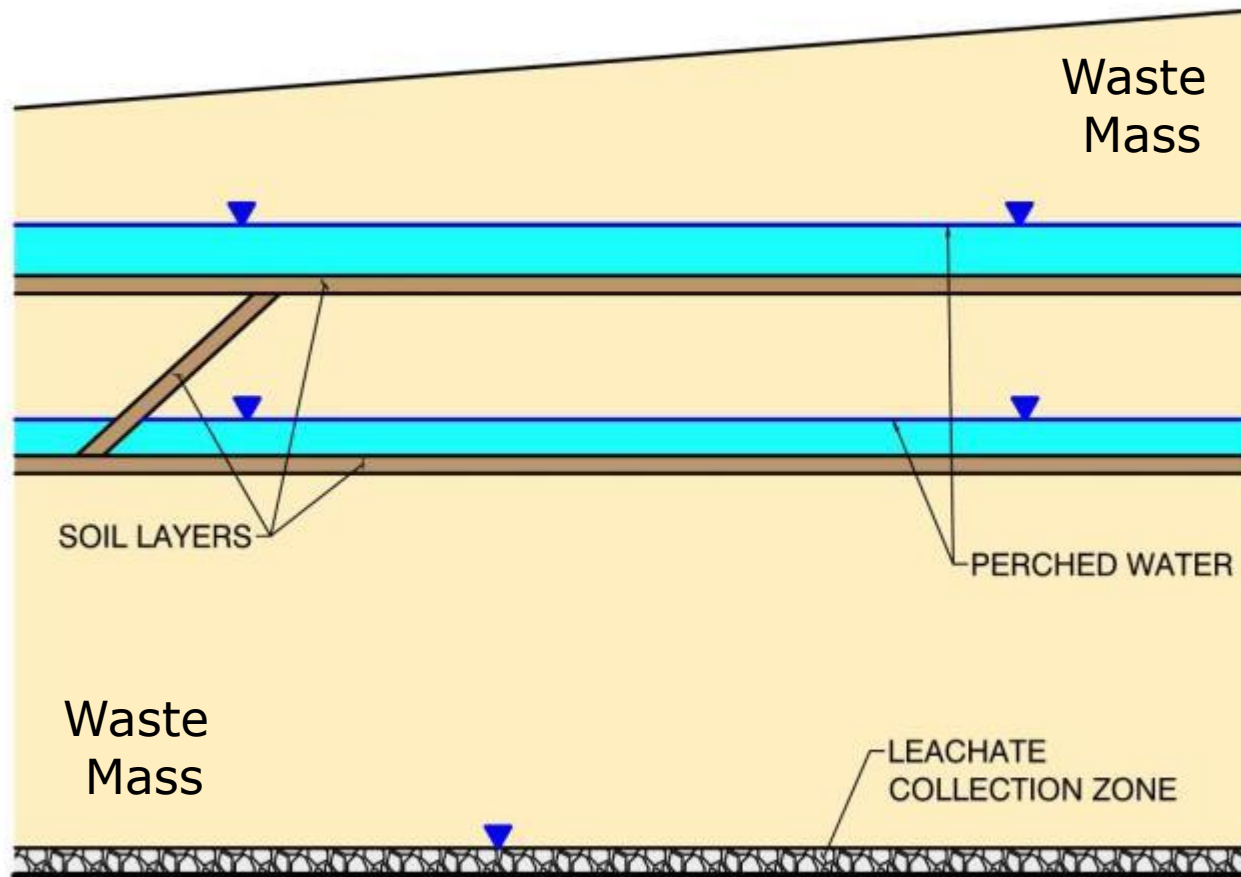




# New and Replacement Gas Wells

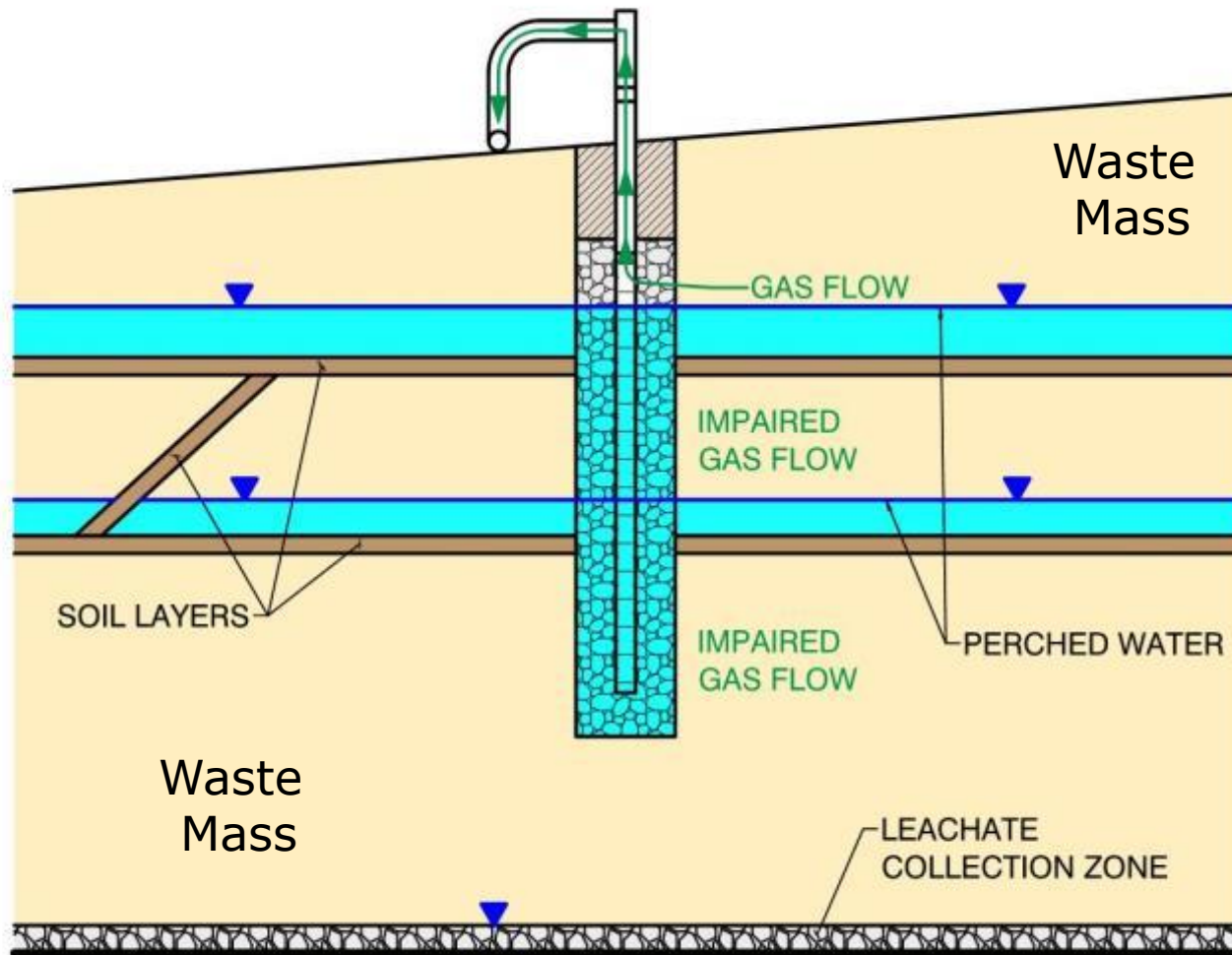


# Perched Water

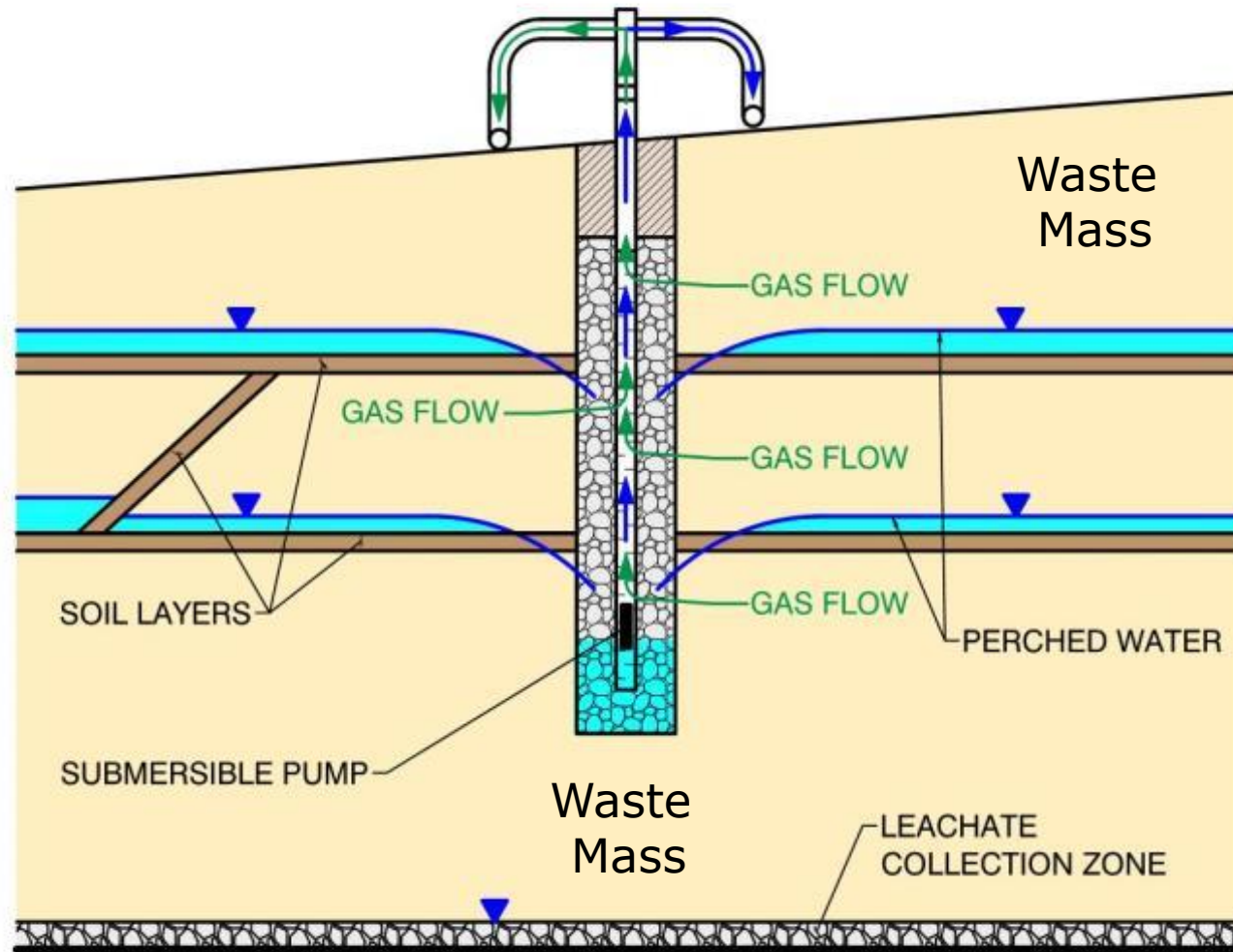




# Watered-in Gas Well

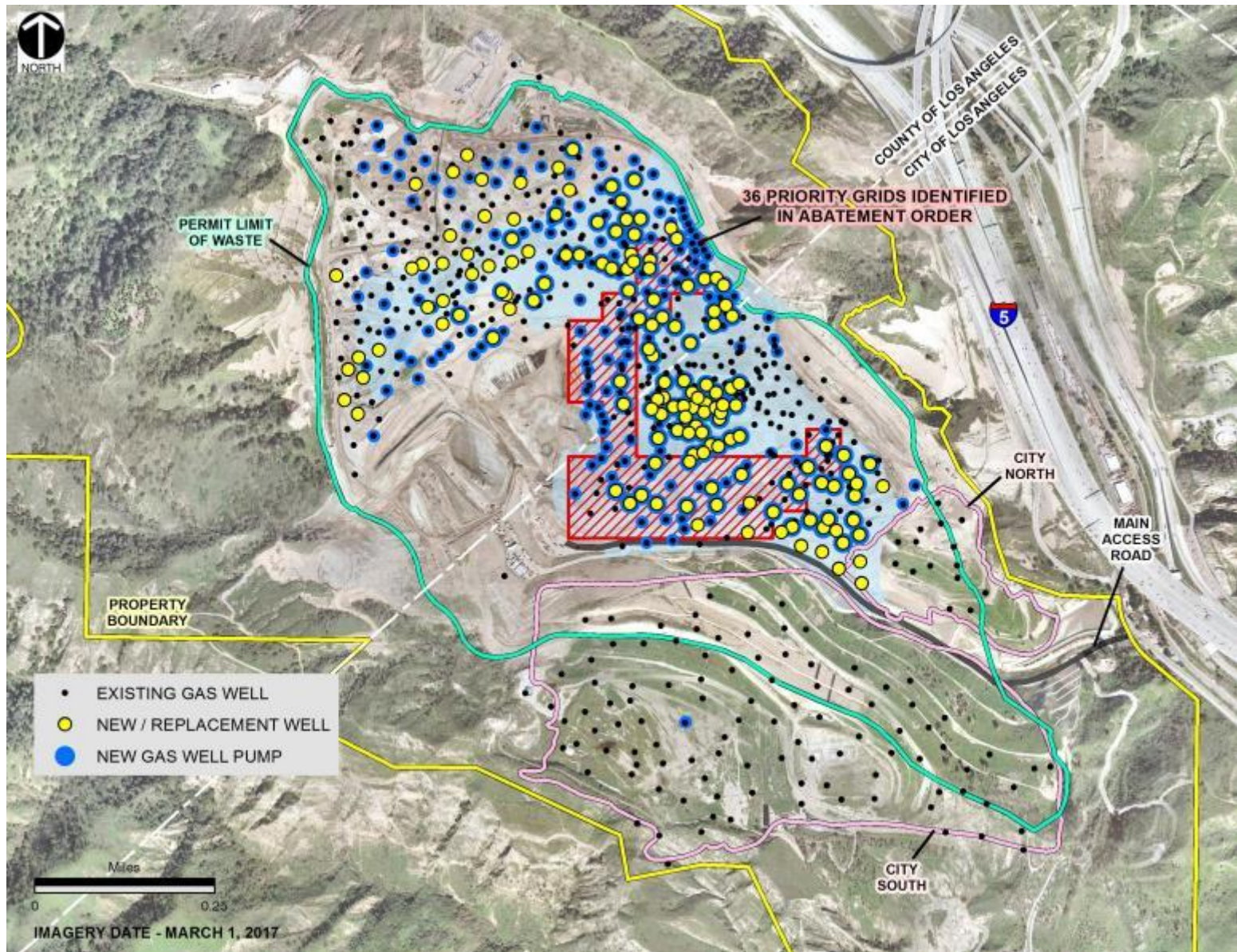


# Dewatering Pump Installation





# New and Proposed Gas Well Pumps





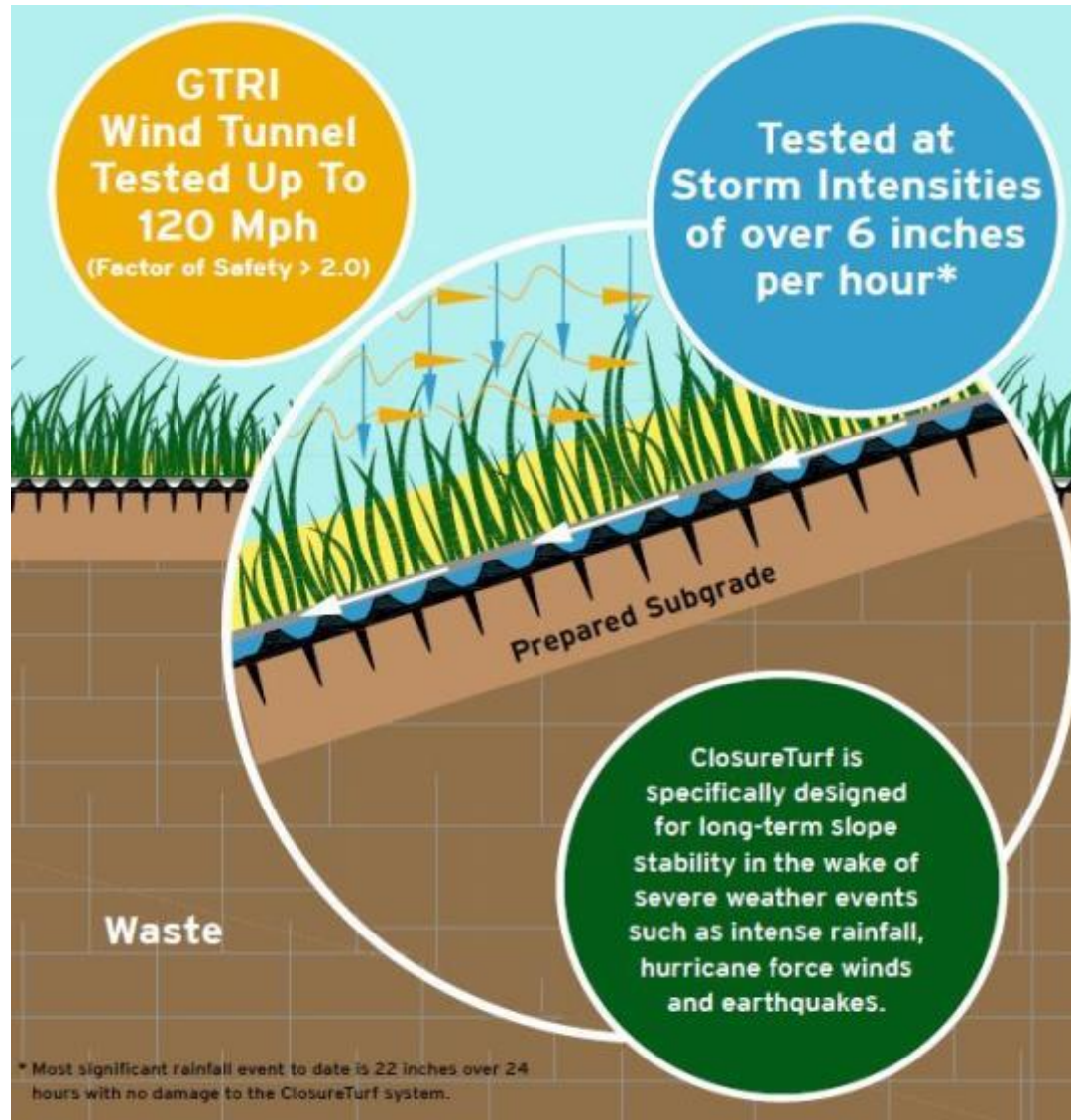
# Enhanced Intermediate Cover

- Until the gas extraction system improvements become effective, enhanced intermediate cover will help prevent gas odors from escaping
- Third-party engineering report identified best enhanced intermediate cover options, three of which we are proposing:
  1. Closure Turf
  2. Intermediate spray-on cover
  3. Vegetative cover



Closure Turf Example

# Option #1 - Closure Turf



## Option #2 – Intermediate Spray-on Cover



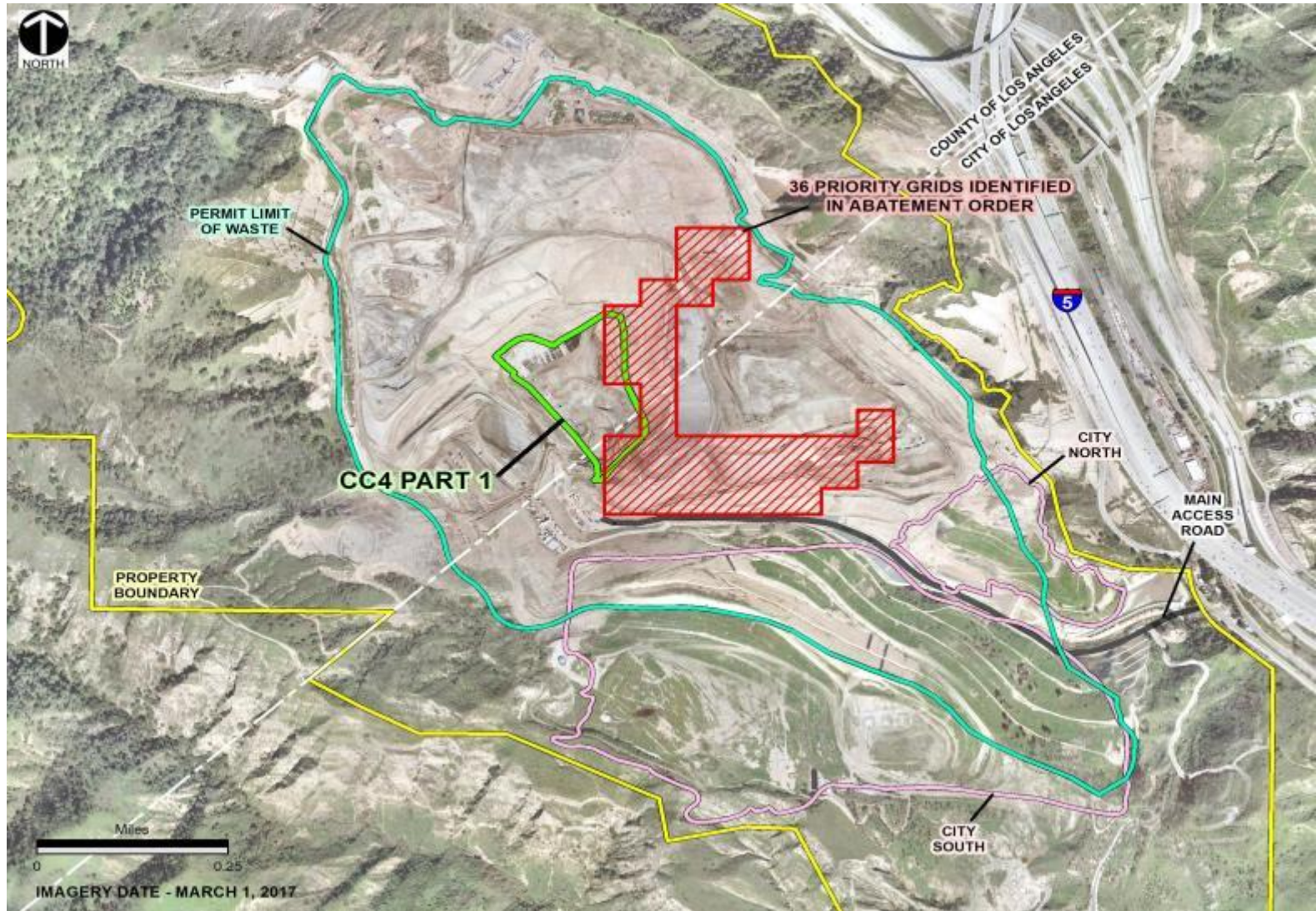


## Option #3 – Vegetative Cover



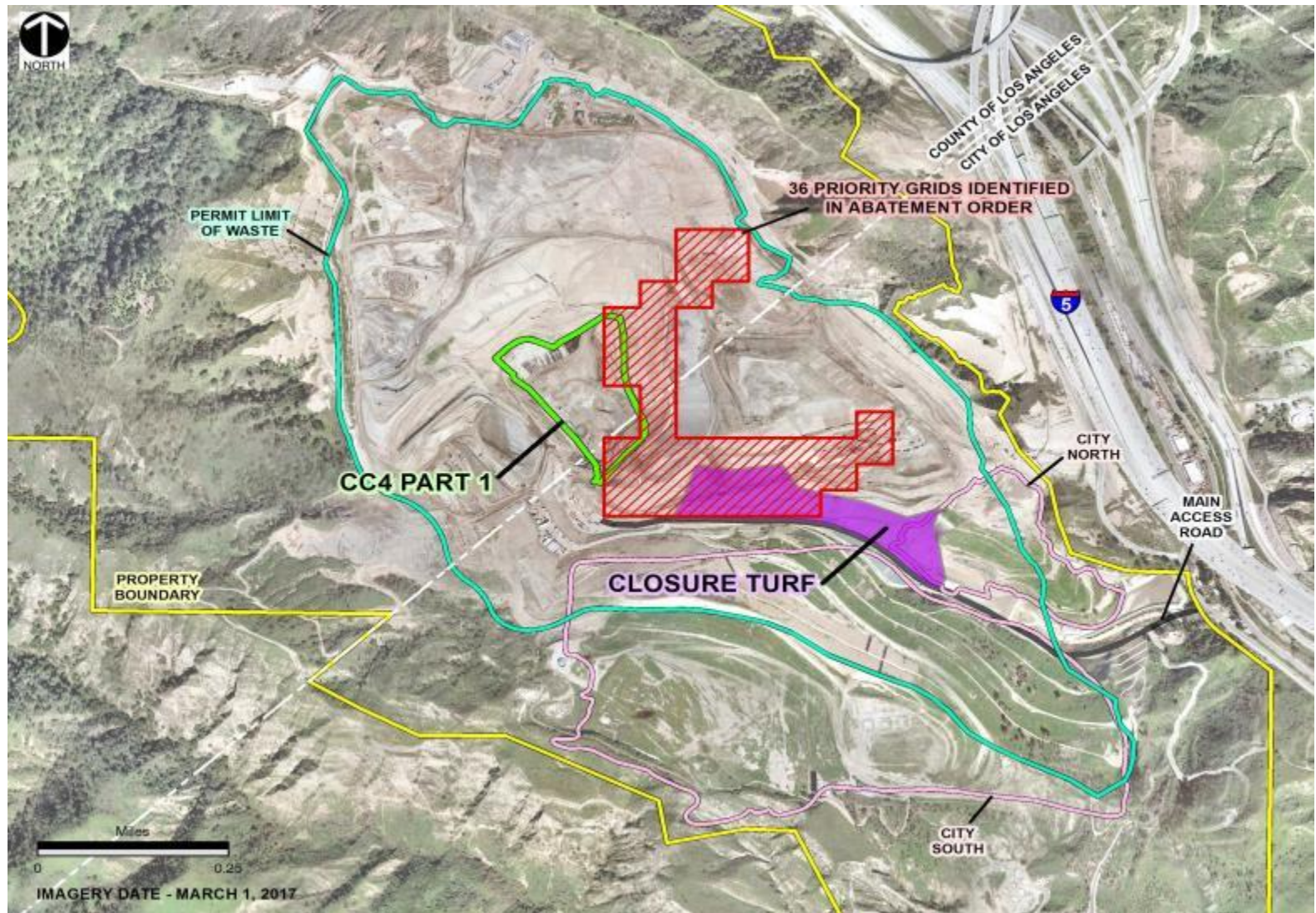


# Locations for Enhanced Intermediate Covers



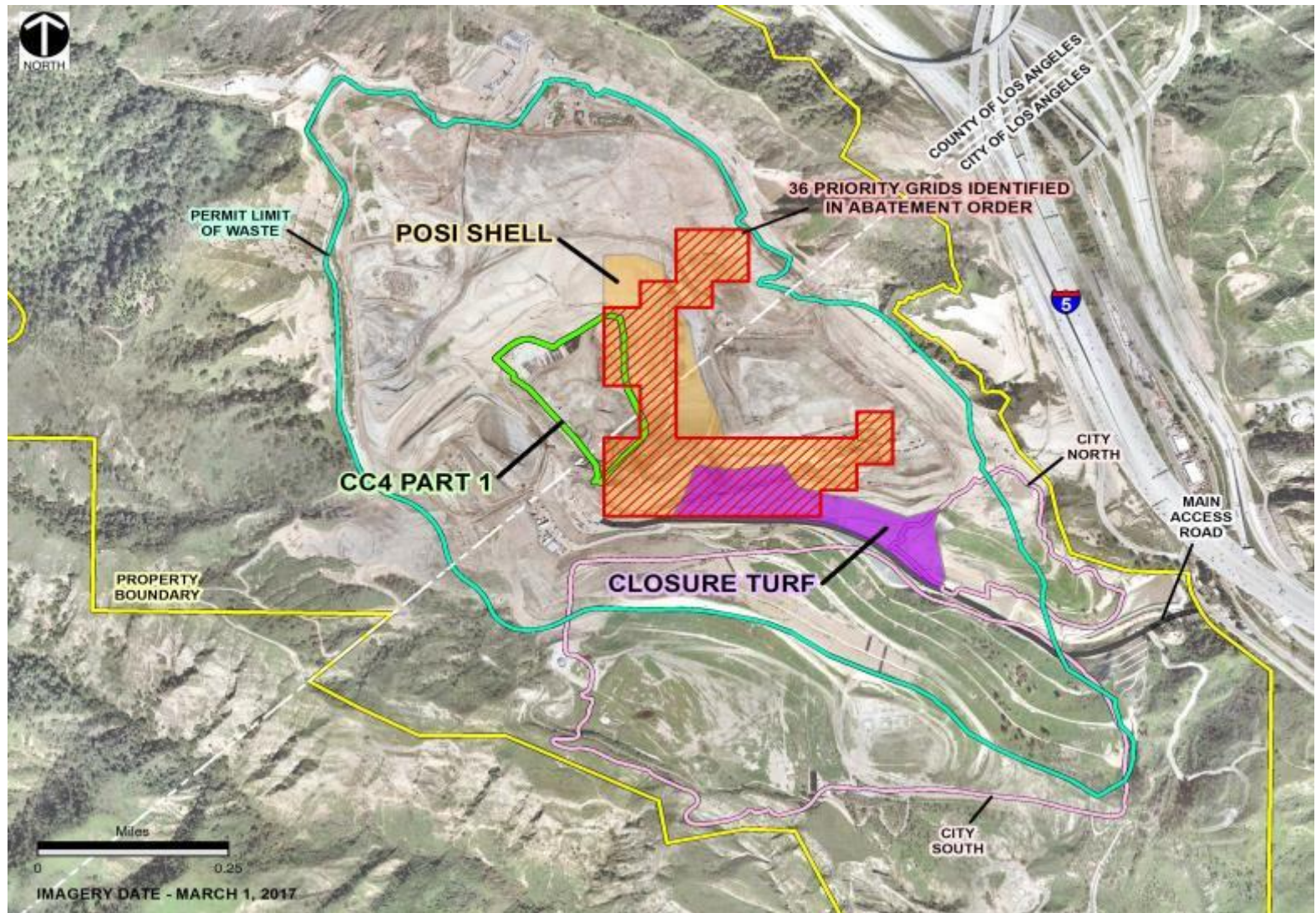


# Locations for Enhanced Intermediate Covers



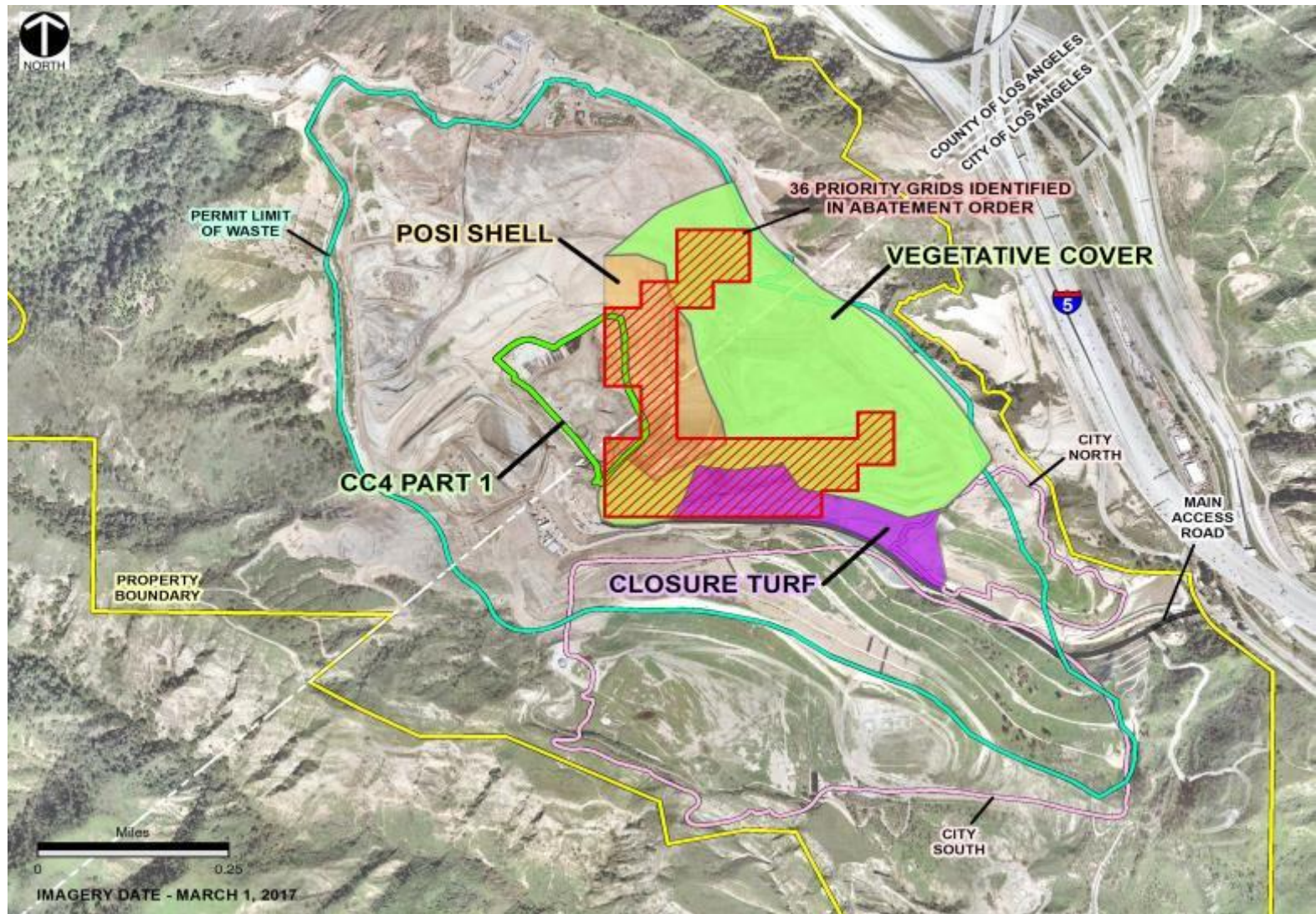


# Locations for Enhanced Intermediate Covers



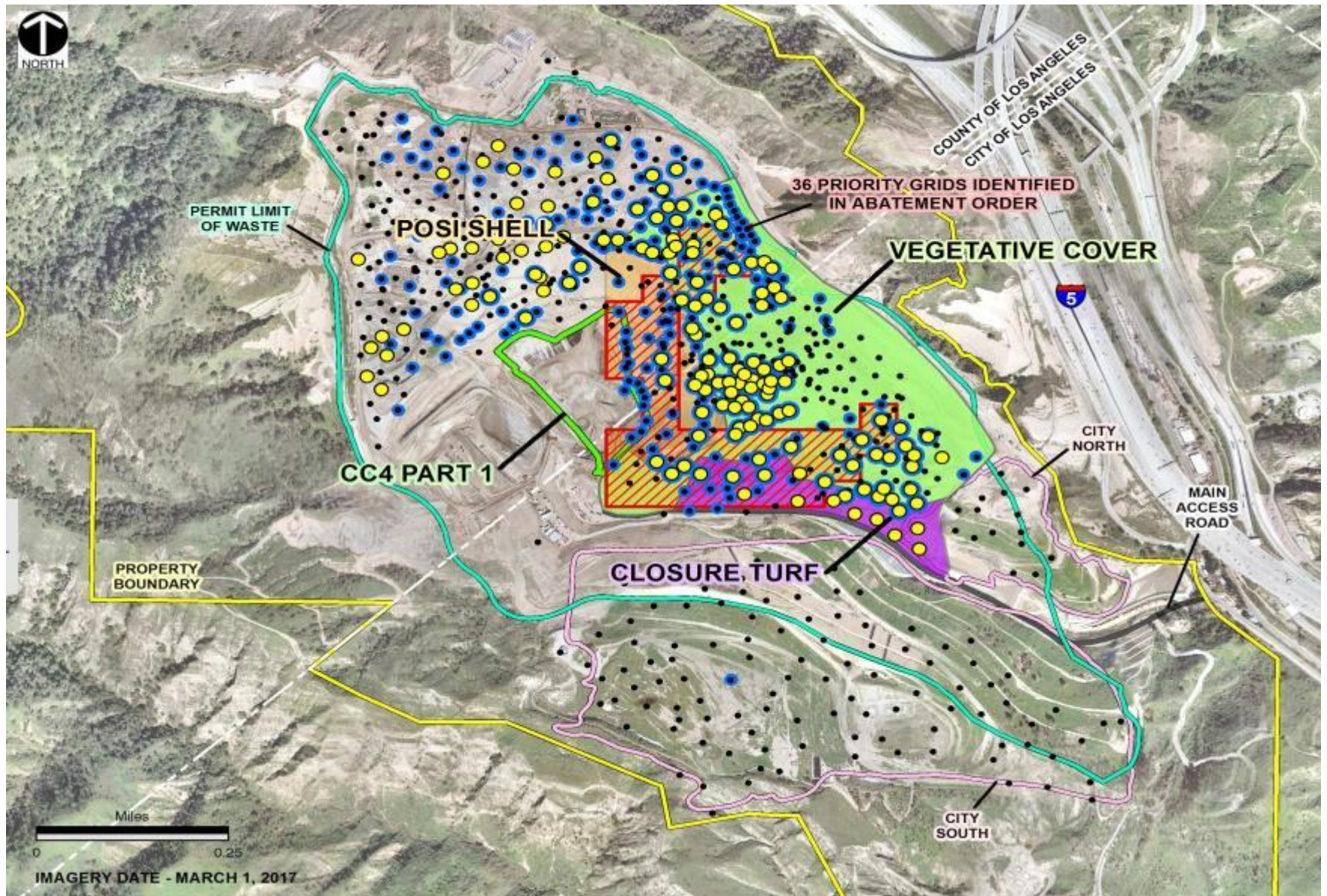


# Locations for Enhanced Intermediate Covers





# Comprehensive Solutions





# When We Are Going to Do It

Action	Target Month of Completion	Current Progress
Add or replace more than 150 gas wells	July	36 gas wells added or replaced
Install pumps in more than 250 gas wells	August	150 pumps installed
Apply 37 acres of intermediate spray-on cover	August	Approximately 4 acres currently applied
Install 21 acres of closure turf	August	Design completed; materials ordered
Prepare soil and seed 57 acres of vegetative cover	December	5-acre test plot underway (intermediate spray-on currently being applied)

# Community Outreach

- Weekly e-Blast
  - Provides specific schedule updates and tracking of progress
- Expanded website with information updated weekly
  - [Sunshinecanyon.com](http://Sunshinecanyon.com)
- Quarterly Newsletters
- Neighborhood Group Outreach
  - Granada Hills Neighborhood Council
  - Community Advisory Committee



Thank You

**SUNSHINE CANYON**  
*Landfill*