

MANAGEMENT OF GREEN WASTE IN QUARANTINED AREAS



LOS ANGELES COUNTY SOLID WASTE MANAGEMENT COMMITTEE/
INTEGRATED WASTE MANAGEMENT TASK FORCE
FEBRUARY 16, 2017

ASIAN CITRUS PSYLLID (ACP)



- Pest Hotline: 1-800-491-1899

The Asian citrus psyllid (ACP) is a pest that acts as a carrier or vector spreading "huanglongbing" (HLB), a devastating disease of citrus trees. This bacterial disease is transmitted to healthy trees by the psyllid after it feeds on infected plant tissue.

HUANGLONGBING (HLB)

- ▶ Pest Hotline: 1-800-491-1899



The plant disease known as Huanglongbing (HLB) is believed to be caused by a phloem-restricted bacterium which is vectored by the Asian Citrus Psyllid (ACP).

LIGHT BROWN APPLE MOTH (LBAM)

Female



Male

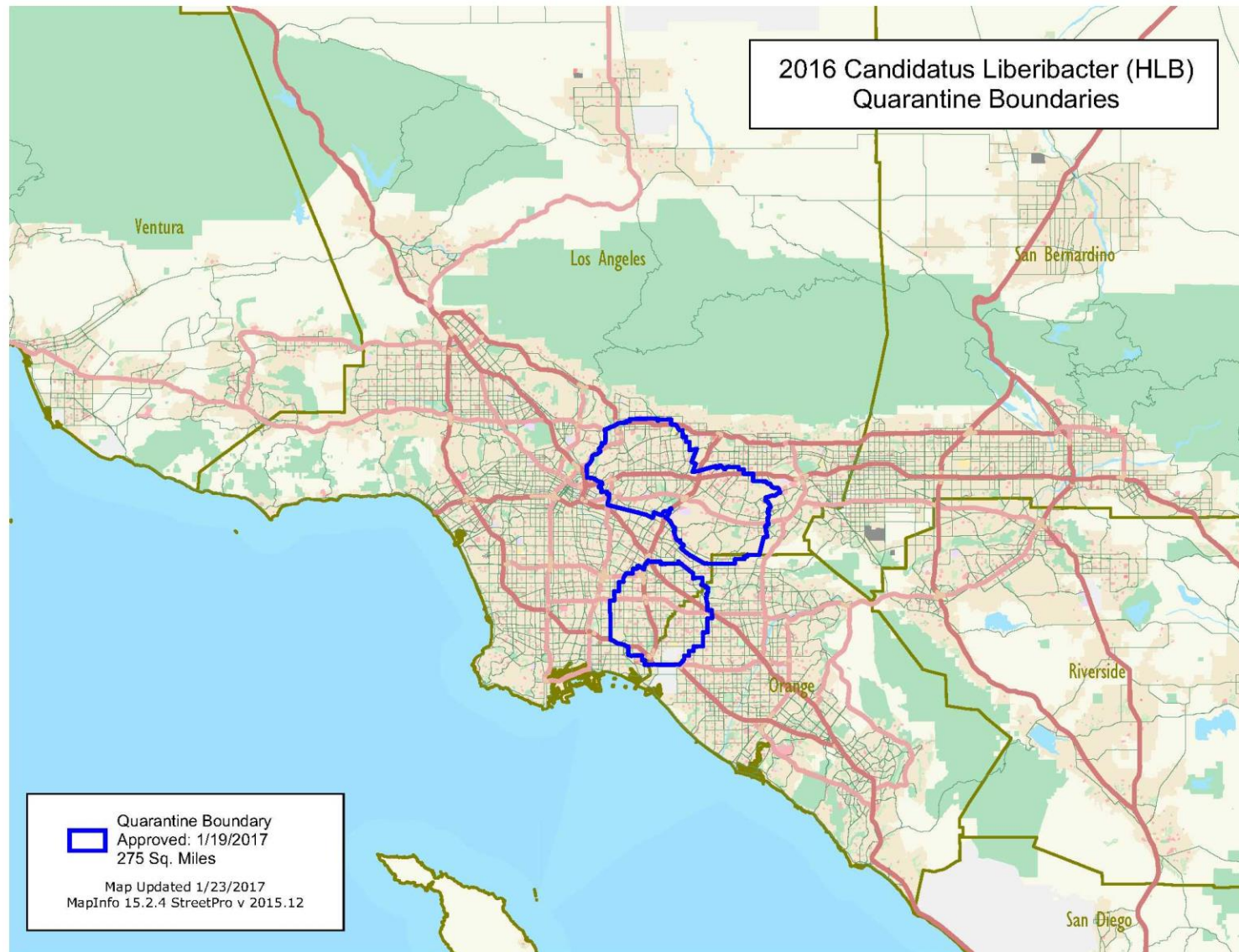
- Pest Hotline: 1-800-491-1899

LBAM has been associated with many plants representing 290 genera (USDA 2008). These genera contain over 2000 species and many of these species that are not already known to be hosts could prove to be hosts as LBAM becomes exposed to them.

ACP QUARANTINE AREA LAC

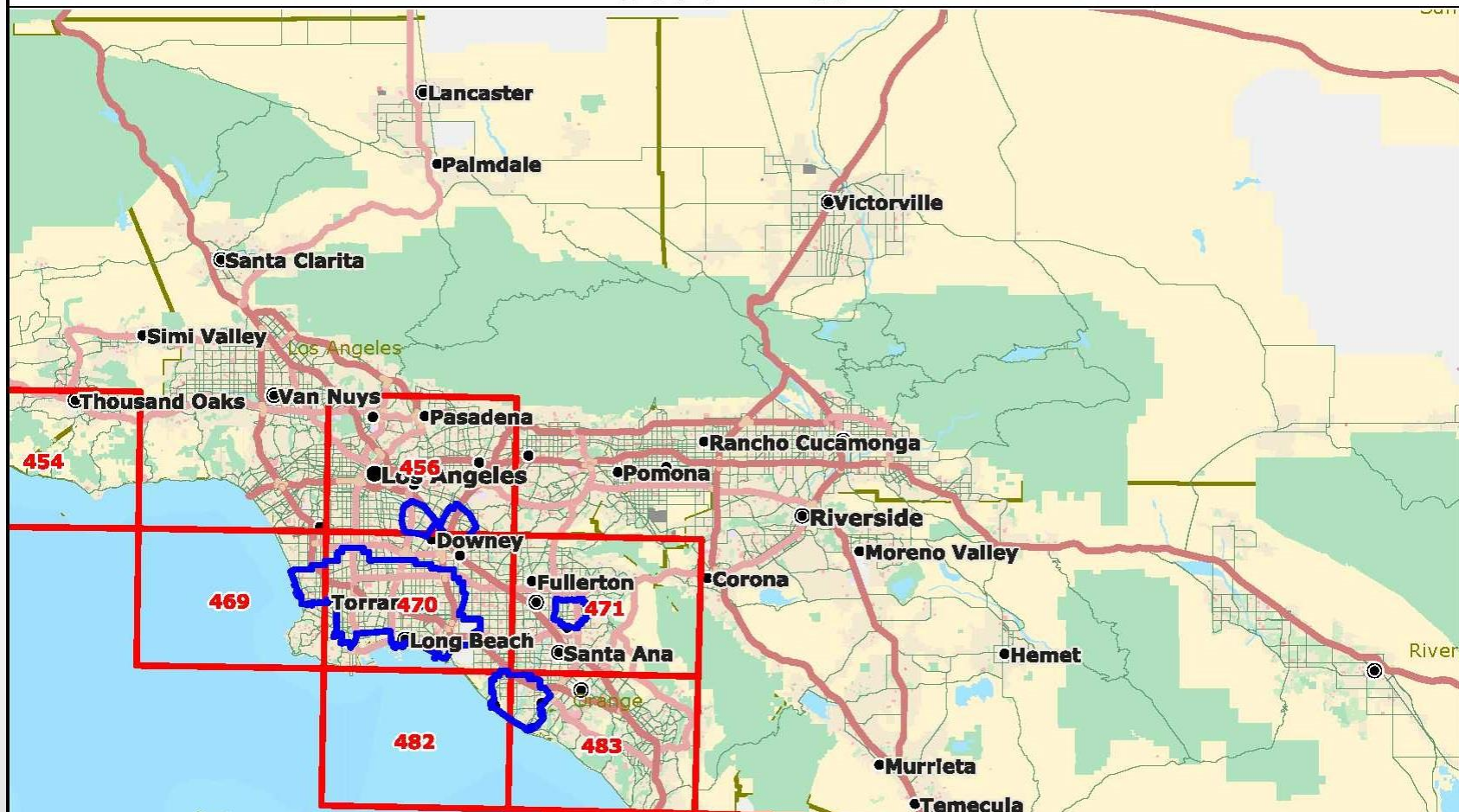


HLB QUARANTINE AREA LAC



LBAM QUARANTINE AREA LAC

2016 Light Brown Apple Moth (LBAM)
Quarantine Boundaries
South Area



PROPER MANAGEMENT OF GREEN WASTE

- MEETINGS WITH DPH AND DACWM
- COMPLIANCE AGREEMENTS
- WORK WITH WASTE HAULERS AND FACILITIES TO BECOME COMPLIANT
- FRANCHISE/GDD CONTRACTS LANGUAGE
- CCR TITLE 3, DIVISION 4, CHAPTER 3, SUBCHAPTER 4, SECTIONS 3434,
3435, AND 3439

FOR MORE INFORMATION

- ACP:

<https://www.cdfa.ca.gov/plant/acp/regulation.html>

- HLB:

https://www.cdfa.ca.gov/plant/pe/InteriorExclusion/hlb_quarantine.html

- LBAM:

<https://www.cdfa.ca.gov/plant/lbam/regulation.html>