

SOUTH COAST AIR QUALITY MANAGEMENT DISTRICT

Sunshine Canyon Landfill, Facility ID No. 49111

Odor Complaints Reported to AQMD Alleging SCL; and Notices of Violation (NOV) Summary from 2009 through August 31, 2017

Public Nuisance: AQMD Rule 402; Calif. H&S 41700

	Jan	Feb	March	April	May	June	July	August	Sept	Oct	Nov	Dec	Total NOVs	Total Complaints
<b>2010</b>														
Complaints	64	94	93	56	21	5	13	33	40	39	76	79		613
NOVs	1	2	0	1	0	0	0	0	0	0	0	2	6	
<b>2011</b>														
Complaints	138	173	222	99	92	45	36	138	181	191	126	124		1565
NOVs	2	4	7	2	1	0	0	2	2	3	3	4	30	
<b>2012</b>														
Complaints	163	104	66	129	97	55	113	140	216	171	92	139		1485
NOVs	5	1	1	2	2	1	2	2	4	3	2	4	29	
<b>2013</b>														
Complaints	82	108	112	112	46	62	65	97	136	176	93	72		1161
NOVs	0	1	2	2	0	1	0	0	2	3	3	1	15	
<b>2014</b>														
Complaints	32	37	164	122	52	28	83	81	302	223	80	278		1482
NOVs	0	0	4	5	1	0	2	4	6	5	3	7	37	
<b>2015</b>														
Complaints	260	119	297	60	12	41	23	126	337	370	85	65		1795
NOVs	5	3	7	2	0	0	0	2	11	7	2	0	39	
<b>2016</b>														
Complaints	100	188	185	181	30	74	52	85	206	193	206	59		1559
NOVs	2	4	6	5	0	1	1	1	2	4	4	1	31	
<b>2017</b>														
Complaints	200	254	274	116	19	10	14	30						917
NOVs	6	7	6	1	0	0	0	0					20	
													<b>Total R402 NOVs Issued to Date</b>	
													<b>Total Complaints *</b>	
													<b>Total R402 NOVs Issued **</b>	
													214	10,890

\* Includes 313 Complaints from 2009

\*\* Includes 7 NOVs from 2009

September 5, 2017

NOVs for Other SCAQMD Rules

	Jan	Feb	March	April	May	June	July	August	Sept	Oct	Nov	Dec	
2011	0	0	0	0	0	0	0	0	2	0	0	0	2
Rule	1150.1												
2012	0	0	0	0	1	0	0	1	0	2	2	0	6
Rule	1150.1				1150.1				1150.1		1150.1		
2013	0	0	0	0	0	0	0	0	0	0	0	0	0
Rule													
2014	0	0	0	0	0	0	0	0	0	0	0	0	0
Rule													
2015	0	0	0	0	0	0	0	0	0	0	0	0	0
Rule													
2016	0	0	0	0	0	0	0	0	0	0	0	0	0
Rule													
2017	0	0	0	0	0	0	0						0
Rule													

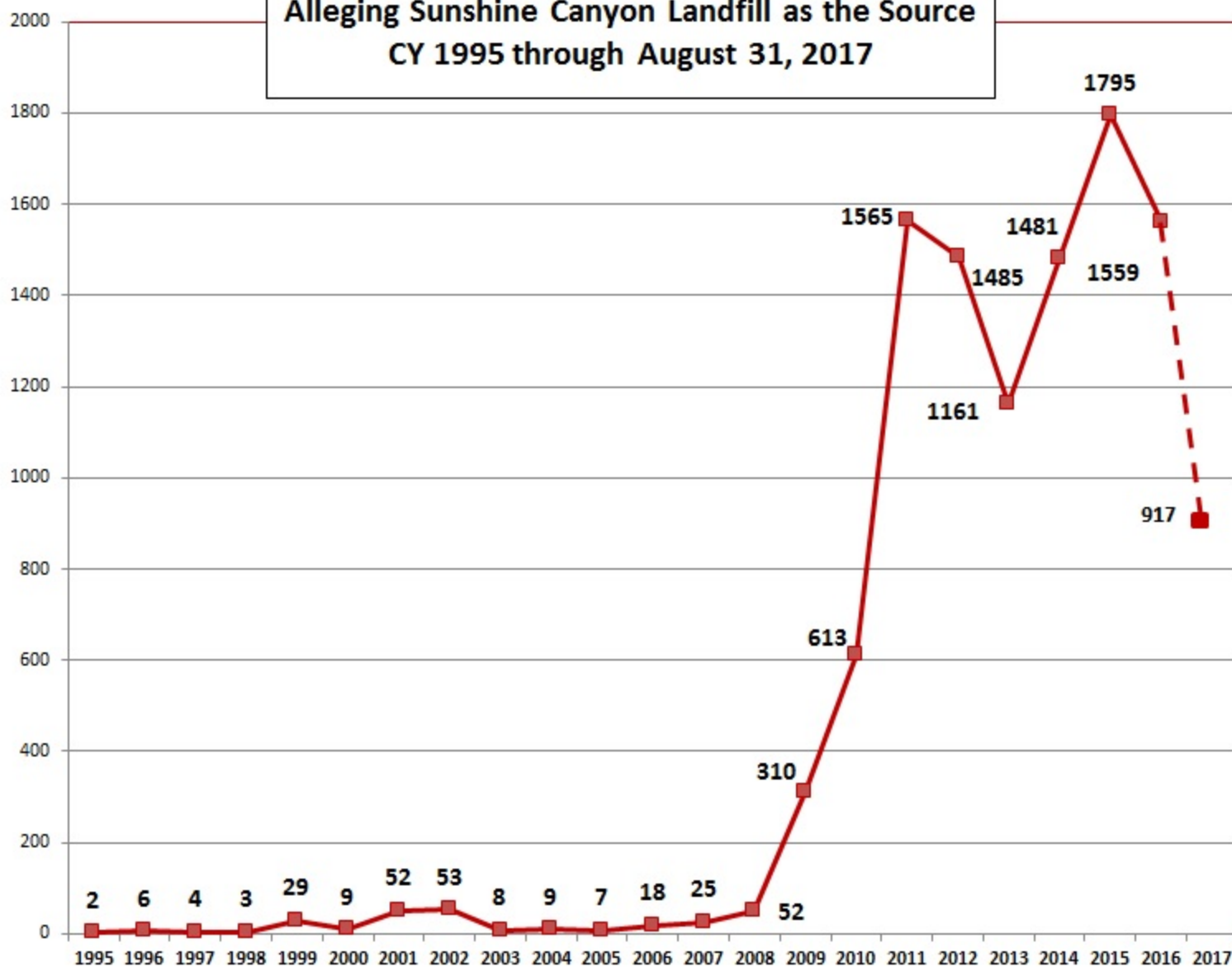
Total 1150.1 NOVs Issued	8
Total R1150.1 NOVs Issued	8

\* Includes 313 Complaints from 2009

\*\* Includes 7 NOVs from 2009

**Complaints Reported to the SCAQMD  
Alleging Sunshine Canyon Landfill as the Source  
CY 1995 through August 31, 2017**

**Total Number of Complaints**





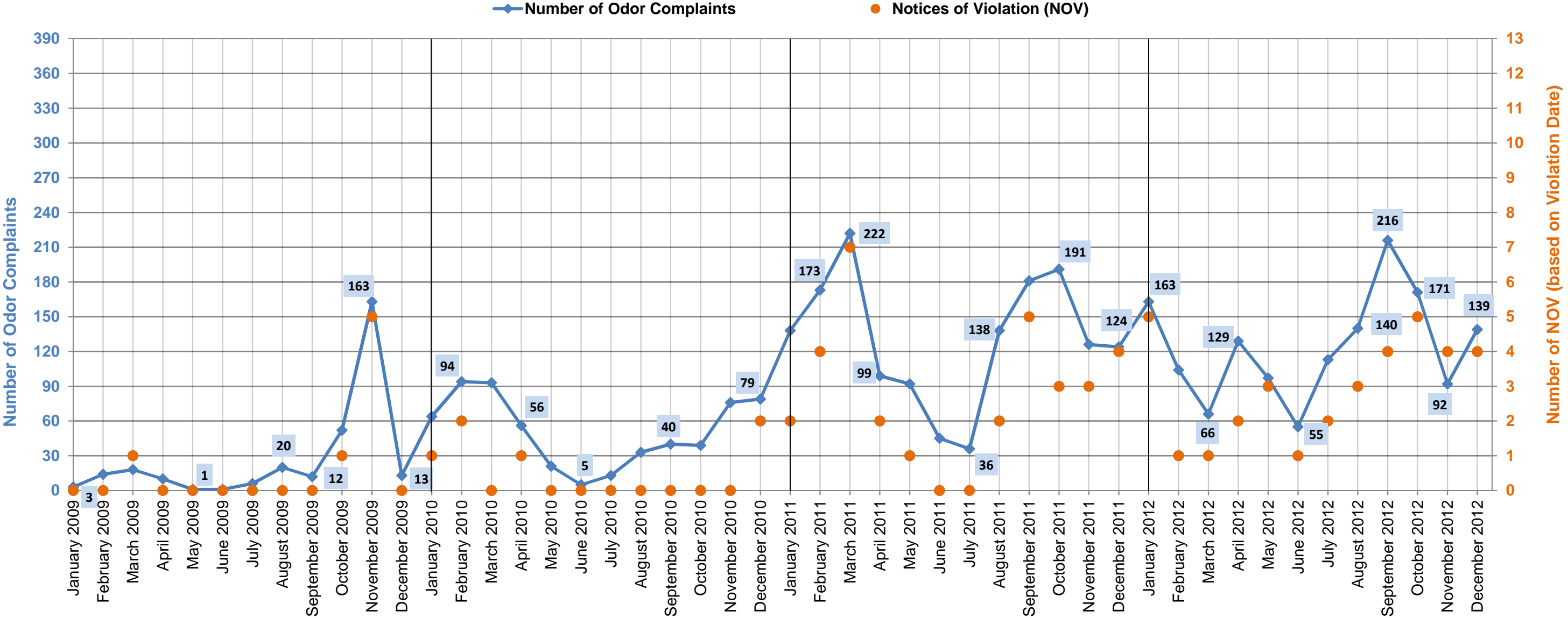
**South Coast Air Quality Management District**  
**SUNSHINE CANYON LANDFILL ODOR COMPLAINTS**  
**MONTHLY REPORT – August 2017**

#	Day <sup>1</sup>	Date	Time	Complaint	Code <sup>2</sup>	Address
1	Wednesday	8/16/2017	11:30 PM	279282	NFR	Canyon Ridge Ln., Granada Hills 91344
2	Monday	8/21/2017	10:51 PM	279378	None	Mission Tierra Way, Granada Hills 91344
3	Sunday	8/27/2017	7:17 AM	279552	None	Lisette St., Granada Hills 91344
4	Sunday	8/27/2017	7:17 AM	279553	None	Jimeno Ave., Granada Hills 91344
5	Sunday	8/27/2017	7:36 AM	279554	LG	Meadow Wood Ln., Granada Hills 91344
6	Monday	8/28/2017	10:56 PM	279616	LG	Nanette St., Granada Hills 91344
7	Monday	8/28/2017	11:17 PM	279619	LG	Golden Valley Ln., Granada Hills 91344
8	Monday	8/28/2017	11:18 PM	279620	LG	Canyon Ridge Ln., Granada Hills 91344
9	Monday	8/28/2017	11:54 PM	279623	None	Midwood Dr., Granada Hills 91344
10	Tuesday	8/29/2017	12:11 AM	279625	None	El Oro Way, Granada Hills 91344
11	Tuesday	8/29/2017	6:53 AM	279627	None	Nanette St., Granada Hills 91344
12	Tuesday	8/29/2017	7:00 AM	279604	None	Lisette St., Granada Hills 91344
13	Tuesday	8/29/2017	7:03 AM	279600	None	Jimeno Ave., Granada Hills 91344
14	Tuesday	8/29/2017	7:05 AM	279601	None	Lisette St., Granada Hills 91344
15	Tuesday	8/29/2017	7:06 AM	279602	None	Lisette St., Granada Hills 91344
16	Tuesday	8/29/2017	7:07 AM	279603	None	Lisette St., Granada Hills 91344
17	Tuesday	8/29/2017	7:54 AM	279610	None	(None Provided)
18	Tuesday	8/29/2017	8:40 AM	279624	None	Canyon Ridge Ln., Granada Hills 91344
19	Tuesday	8/29/2017	7:15 PM	279718	NFR	Golden Valley Ln., Granada Hills 91344
20	Tuesday	8/29/2017	8:17 PM	279720	NFR	Midwood Dr., Granada Hills 91344
21	Tuesday	8/29/2017	10:00 PM	279757	NFR	Golden Valley Ln., Granada Hills 91344
22	Tuesday	8/29/2017	10:01 PM	279758	NFR	Canyon Ridge Ln., Granada Hills 91344
23	Tuesday	8/29/2017	10:25 PM	279765	NFR	Lithuania Dr., Granada Hills 91344
24	Wednesday	8/30/2017	12:32 AM	279766	NFR	Van Gogh St., Granada Hills 91344
25	Wednesday	8/30/2017	7:52 PM	279821	NFR	Sesnon Blvd., Granada Hills 91344
26	Wednesday	8/30/2017	9:01 PM	279823	NFR	Meadow Wood Ln., Granada Hills 91344
27	Wednesday	8/30/2017	10:52 PM	279824	NFR	Canyon Ridge Ln., Granada Hills 91344
28	Thursday	8/31/2017	10:24 PM	279861	OO	Canyon Ridge Ln., Granada Hills 91344
29	Thursday	8/31/2017	10:34 PM	279863	OO	Golden Valley Ln., Granada Hills 91344
30	Thursday	8/31/2017	11:07 PM	279865	None	Midwood Dr., Granada Hills 91344

<sup>1</sup> Sunshine Canyon Landfill does not receive or process any trash on Sundays

<sup>2</sup> **TR:** Trash Odors **LG:** Landfill Gas Odors **OO:** Odor from other source **None:** No odor detected **NFR:** No Field Response

Number of Notices of Violation and Odor Complaints - Sunshine Canyon Landfill



Strong El Niño winds were reported.

Damage to gas collection system.

50 vertical gas wells were installed.

9-inch soil cover requirement.

Geologic movement resulted in large fissures.

54 gas wells were non-functional for several weeks.

Damaged gas line.

Construction of Cell CC2.

Construction of double liner was completed.

Temporary Flare became operational.

Two 200-HP blowers were installed at Flares 1 and 3.

Widespread hydrogen sulfide odor event emanating from the Salton Sea occurred throughout Southern CA.

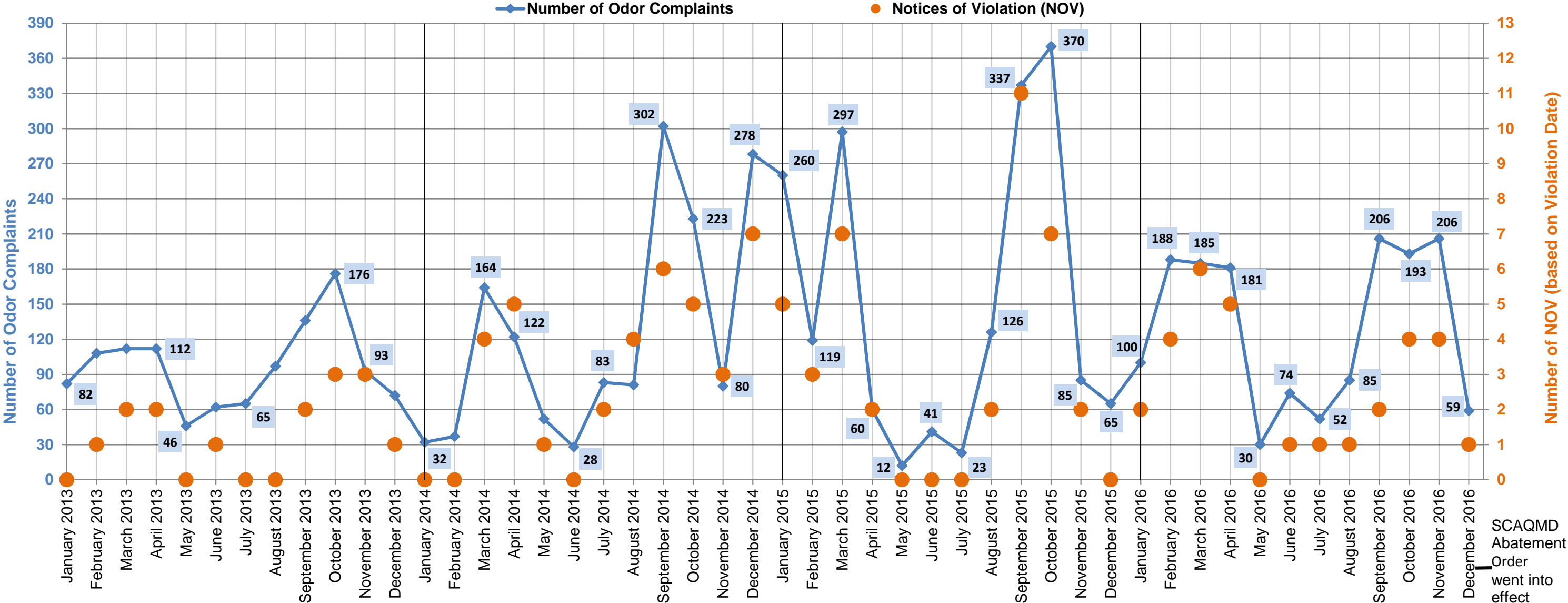
Flare 9 became operational.

A 200-HP blower was installed at Flare 8.

50 pumps were installed in gas wells.

Note: 1.) Number of complaints are based on AQMD's Complaint Summary Monthly Reports.  
2.) Number of Notices of Violation are based on SCAQMD's Facility Information Detail (FIND) website.  
3.) Schools nearby are usually off in early June and resume around 2nd week of August.  
4.) Leachate collected is based on Republic Services' Summary of Water Sources Quarterly Reports to the SCL - LEA.

Number of Notices of Violation and Odor Complaints - Sunshine Canyon Landfill



60 vertical gas wells and 27 pumps were installed.

14 vertical gas wells installed.

Flare 10 became operational.

Gas well was damaged.

14 vertical gas wells were installed.

Ponded water, erosional rills, damaged protective soil layer, and trash exposure from a storm event were observed.

From Dec. 2013 to April 2014, 30 vertical gas wells and 25 pumps were installed.

9,500 linear feet of gas lines and 1,900 linear feet of header lines were installed.

24 vertical gas wells were installed.

July 21 - startup of the Gas-to-Energy facility commenced.

September 1 - Gas-to-Energy facility became fully operational.

29 vertical gas wells were installed, an 18-inch header was installed on the City-side, and well dewatering program was upgraded.

Trash exposure on several occasions were observed due to intense rainfall.

Nov. 3 - trash exposure was observed due to improper covering of trash from the previous Saturday evening.

11 vertical gas wells were installed.

September 16 - approximately 100' x 100' area of settlement within the existing refuse area on the City South portion was observed. Remediation of the area was completed the

Approx. 5' (Feb 9), 20' (Mar. 18 & 23), and two 20' (April 7) flap in length of ADC material was observed due to high winds overnight.

Oct. 12 - Alternative Daily Cover Pilot Project commenced.

18 vertical gas wells were installed.

April 7 - 2" gas leak at GTE plant. Repair was completed next morning.

Installation of 19 new gas well pumps

Nov 6 - 200 gal of liquid discharged from well 802.

Aug. 24, 6 side slope collectors (CC-3B) were put into service

July 8 - 6" condensate leak near CC-3B. Repair completed by 8:30 AM

June 29 - Leaking condensate valve.

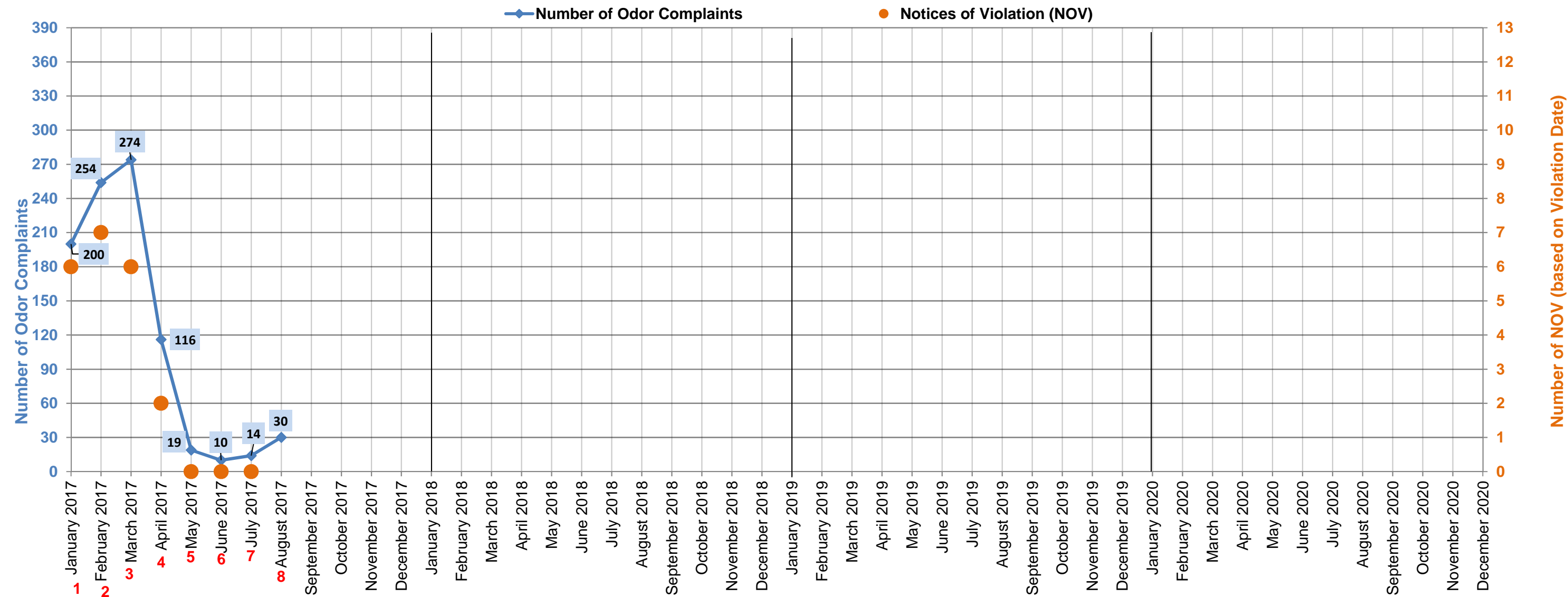
June 21 - An approx. 10' ADC panel laid over Cell-3A had lifted overnight.

June 13 to 17 - Three horizontal collectors installed in CC-3B.

Liquid leak from several locations. Repairs completed same day.

Note: 1.) Number of complaints are based on AQMD's Complaint Summary Monthly Reports.  
2.) Number of Notices of Violation are based on SCAQMD's Facility Information Detail (FIND) website.  
3.) Schools nearby are usually off in early June and resume around 2nd week of August.  
4.) Leachate collected is based on Republic Services' Summary of Water Sources Quarterly Reports to the SCL - LEA.

# Number of Notices of Violation and Odor Complaints - Sunshine Canyon Landfill



1. Heavy rain resulted in stormwater spilled onto SF Road; Due to rain, some cover areas were eroded and exposed trash; Drilling of 15 vertical gas wells;

2. Heavy rain caused erosion of cover material in certain areas and trash was exposed; continue drilling of 15 vertical gas wells; Condensate leaked from well 813 during installation of well pump.

3. Landfill rec'd trash starting from 9:00 AM; a subsurface liquid line near main haul was damage and caused 3,000 gals spilled across main haul road with some entered into strom drain channel.
4. As of 04/24, 100 new vertical gas wells have been installed and pumps are being installed to address liquids.

5. A gas header line near main haul road was leakaged and caused 200 gals discharged onto main haul road and some entered into storm drain channel and Terminal Basin.

6. 06/08 shortly after 8 AM, a slide occurred on the western edge of the CC-4 Part 2 subgrade excavation.

- 06/22 A leak from a blind flange on a 4 inch leachate line on the City North portion of the site.
7. 07/18 A leak from a blind flange on a 4 inch leachate line on the City North portion of the site and caused 200 gal release into trench at toe of CC-3B and onto main haul road.

8. 08/16 Repair work for the landslide that occured on the western edge of CC-4 Part 2 subgrade excavation was completed.

- 08/24 LEA issued a violation for gas and monitoring control (a probe registered an exceedance of over 5% for 27 CCR 20921. Perimeter probe P-207A malfunctioned, registered 59.1% methane).

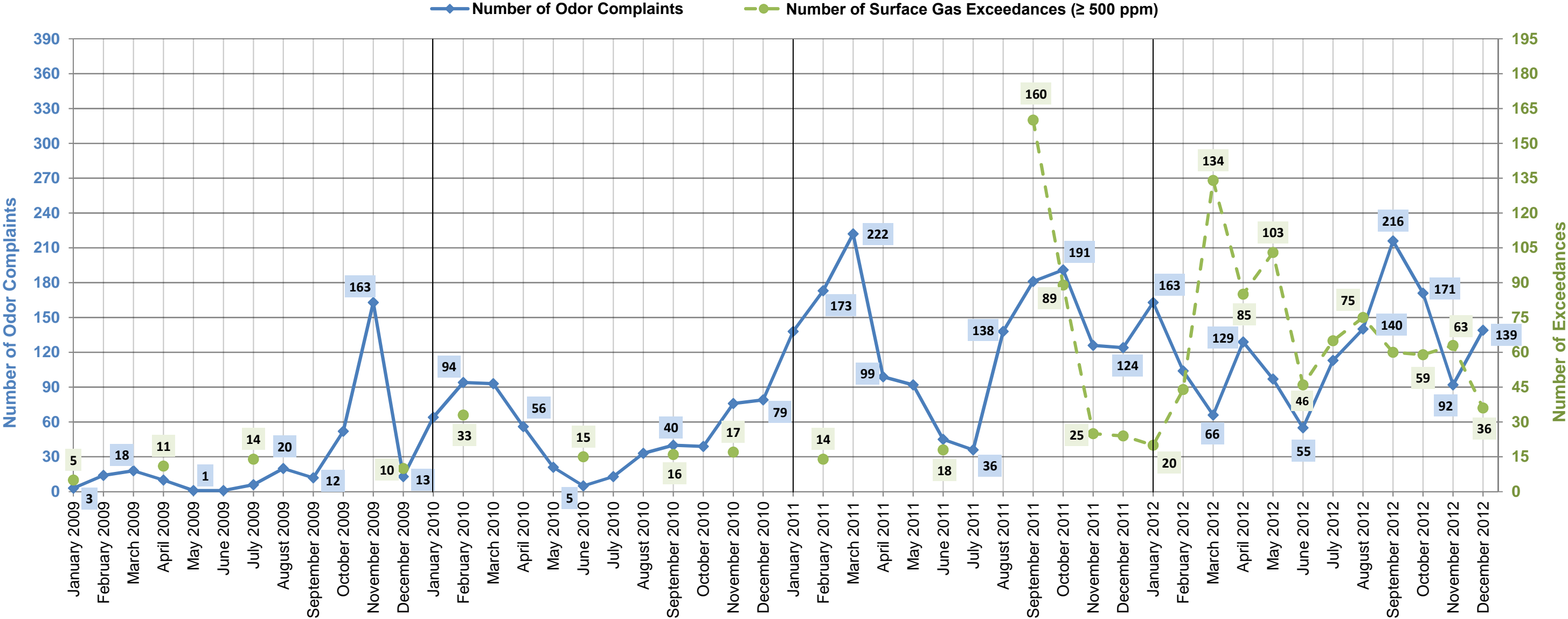
- 08/24 Around 8:20 AM a force main line was struck by a scraper in the City portion of the site near CC-4 Part 1, Approx. 1,500 gallons of liquid discharged in the surrounding area.

- 08/25 at 8:55 AM, a pipe ruptured causing 600 gallons of dust control water to discharge into the conrete lined channel and entered the Terminal Basin (TB) but contained by gabion wall in TB and then water was pump out at 2:30 pm.

Note: 1.) Number of complaints are based on AQMD's Complaint Summary Monthly Reports.  
2.) Number of Notices of Violation are based on SCAQMD's Facility Information Detail (FIND) website.  
3.) Schools nearby are usually off in early June and resume around 2nd week of August.  
4.) Leachate collected is based on Republic Services' Summary of Water Sources Quarterly Reports to the SCL - LEA.



# Surface Gas Emissions and Number of Odor Complaints - Sunshine Canyon Landfill



Strong El Niño winds were reported.

Damage to gas collection system.

50 vertical gas wells were installed.

9-inch soil cover requirement.

Geologic movement resulted in large fissures.

54 gas wells were non-functional for several weeks.

Damaged gas line.

Construction of Cell CC2.

Construction of double liner was completed.

Temporary Flare became operational.

Two 200-HP blowers were installed at Flares 1 and 3.

Widespread hydrogen sulfide odor event emanating from the Salton Sea occurred throughout Southern CA.

Flare 9 became operational.

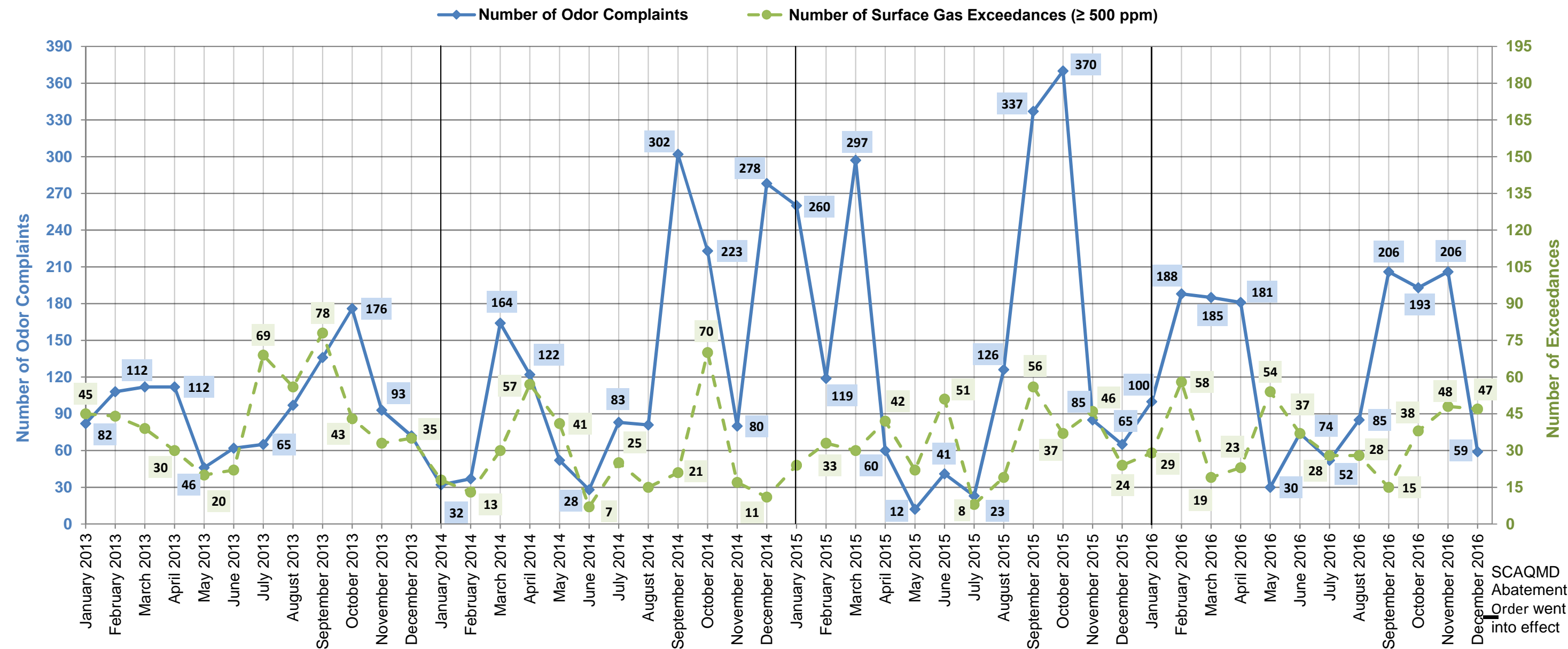
A 200-HP blower was installed at Flare 8.

50 pumps were installed in gas wells.

Note: 1.) Number of complaints are based on AQMD's Complaint Summary Monthly Reports.  
2.) Number of Notices of Violation are based on SCAQMD's Facility Information Detail (FIND) website.  
3.) Schools nearby are usually off in early June and resume around 2nd week of August.  
4.) Leachate collected is based on Republic Services' Summary of Water Sources Quarterly Reports to the SCL -



# Surface Gas Emissions and Number of Odor Complaints - Sunshine Canyon Landfill



60 vertical gas wells and 27 pumps were installed.

14 vertical gas wells installed.

Flare 10 became operational.

Gas well was damaged.

14 vertical gas wells were installed.

Ponded water, erosional rills, damaged protective soil layer, and trash exposure from a storm event were observed.

From Dec. 2013 to April 2014, 30 vertical gas wells and 25 pumps were installed.

9,500 linear feet of gas lines and 1,900 linear feet of header lines were installed.

24 vertical gas wells were installed.

July 21 - startup of the Gas-to-Energy facility commenced.

September 1 - Gas-to-Energy facility became fully operational.

29 vertical gas wells were installed, an 18-inch header was installed on the City-side, and well dewatering program was upgraded.

Trash exposure on several occasions were observed due to intense rainfall.

Nov. 3 - trash exposure was observed due to improper covering of trash from the previous Saturday evening.

11 vertical gas wells were installed.

Approx. 5' (Feb 9), 20' (Mar. 18 & 23), and two 20' (April 7) flap in length of ADC material was observed due to high winds overnight.

Oct. 12 - Alternative Daily Cover Pilot Project commenced.

18 vertical gas wells were installed.

April 7 - 2" gas leak at GTE plant. Repair was completed next morning.

Installation of 19 new gas well pumps.

Aug. 24, 6 side slope collectors (CC-3B) were put into service.

July 8 - 6" condensate leak near CC-3B. Repair completed by 8:30 AM.

June 29 - Leaking condensate valve.

June 21 - An approx. 10' ADC panel laid over Cell-3A had lifted overnight.

June 13 to 17 - Three horizontal collectors installed in CC-3B.

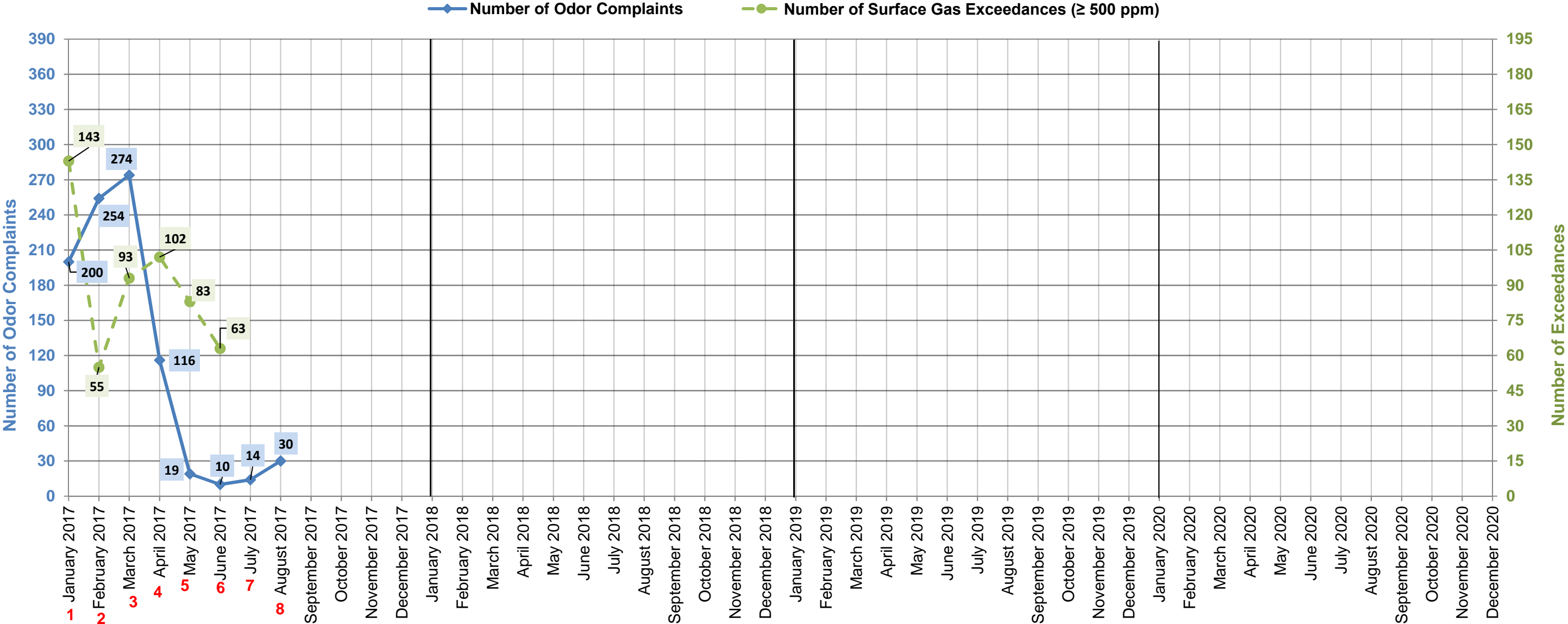
Liquid leak from several locations. Repairs completed same day.

Nov 6 - 200 gal of liquid discharged from well 802.

Note: 1.) Number of complaints are based on AQMD's Complaint Summary Monthly Reports.  
2.) Number of Notices of Violation are based on SCAQMD's Facility Information Detail (FIND) website.  
3.) Schools nearby are usually off in early June and resume around 2nd week of August.  
4.) Leachate collected is based on Republic Services' Summary of Water Sources Quarterly Reports to the SCL - LEA.

September 16 - approx. 100' x 100' area of settlement within the existing refuse area on the City South portion observed. Remediation of the area completed the next day.

# Surface Gas Emissions and Number of Odor Complaints - Sunshine Canyon Landfill



1. Heavy rain resulted in stormwater spilled onto SF Road; Due to rain, some cover areas were eroded and exposed trash; Drilling of 15 vertical gas wells;

2. Heavy rain caused erosion of cover material in certain areas and trash was exposed; continue drilling of 15 vertical gas wells; Condensate leaked from well 813 during installation of well pump.

3. Landfill rec'd trash starting from 9:00 AM; a subsurface liquid line near main haul was damage and caused 3,000 gals spilled across main haul road with some entered into storm drain channel.

4. As of 04/24, 100 new vertical gas wells have been installed and pumps are being installed to address liquids.

5. A gas header line near main haul road was leaked and caused 200 gals discharged onto main haul road and some entered into storm drain channel and Terminal Basin.

6. 06/08 shortly after 8 AM, a slide occurred on the western edge of the CC-4 Part 2 subgrade excavation.

- 06/22 A leak from a blind flange on a 4 inch leachate line on the City North portion of the site.

7. 07/18 A leak from a blind flange on a 4 inch leachate line on the City North portion of the site and caused 200 gal release into trench at toe of CC-3B and onto main haul road.

8. 08/16 Repair work for the landslide that occurred on the western edge of CC-4 Part 2 subgrade excavation was completed.

- 08/24 LEA issued a violation for gas and monitoring control (a probe registered an exceedance of over 5% for 27 CCR 20921. Perimeter probe P-207A malfunctioned, registered 59.1% methane).

- 08/24 Around 8:20 AM a force main line was struck by a scraper in the City portion of the site near CC-4 Part 1, Approx. 1,500 gallons of liquid discharged in the surrounding area.

- 08/25 at 8:55 AM, a pipe ruptured causing 600 gallons of dust control water to discharge into the concrete lined channel and entered the Terminal Basin (TB) but contained by gabion wall in TB and then water was pump out at 2:30 pm.

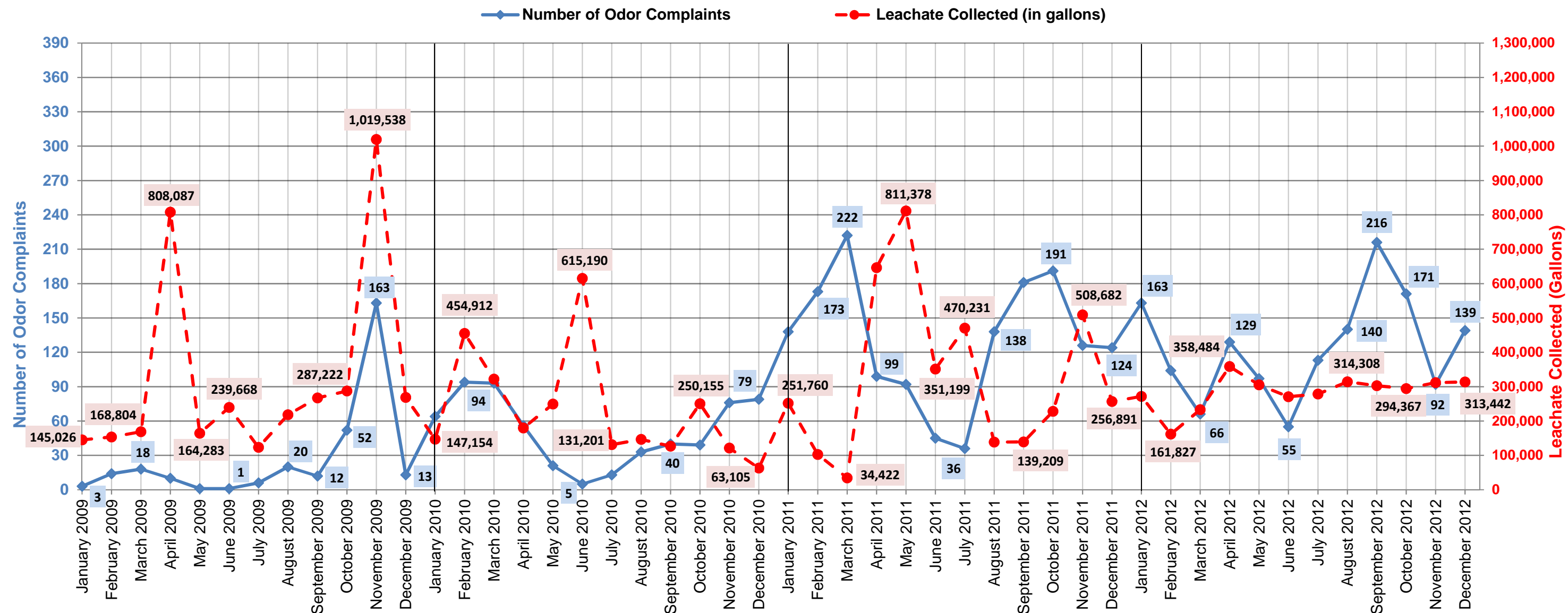
Note: 1.) Number of complaints are based on AQMD's Complaint Summary Monthly Reports.

2.) Number of Notices of Violation are based on SCAQMD's Facility Information Detail (FIND) website.

3.) Schools nearby are usually off in early June and resume around 2nd week of August.

4.) Leachate collected is based on Republic Services' Summary of Water Sources Quarterly Reports to the SCL - LEA.

# Leachate Collected and Number of Odor Complaints - Sunshine Canyon Landfill



Strong El Niño winds were reported.

Damage to gas collection system.

50 vertical gas wells were installed.

9-inch soil cover requirement.

Geologic movement resulted in large fissures.

54 gas wells were non-functional for several weeks.

Damaged gas line.  
Construction of Cell CC2.

Construction of double liner was completed.

Temporary Flare became operational.

Flare 9 became operational.

Two 200-HP blowers were installed at Flares 1 and 3.

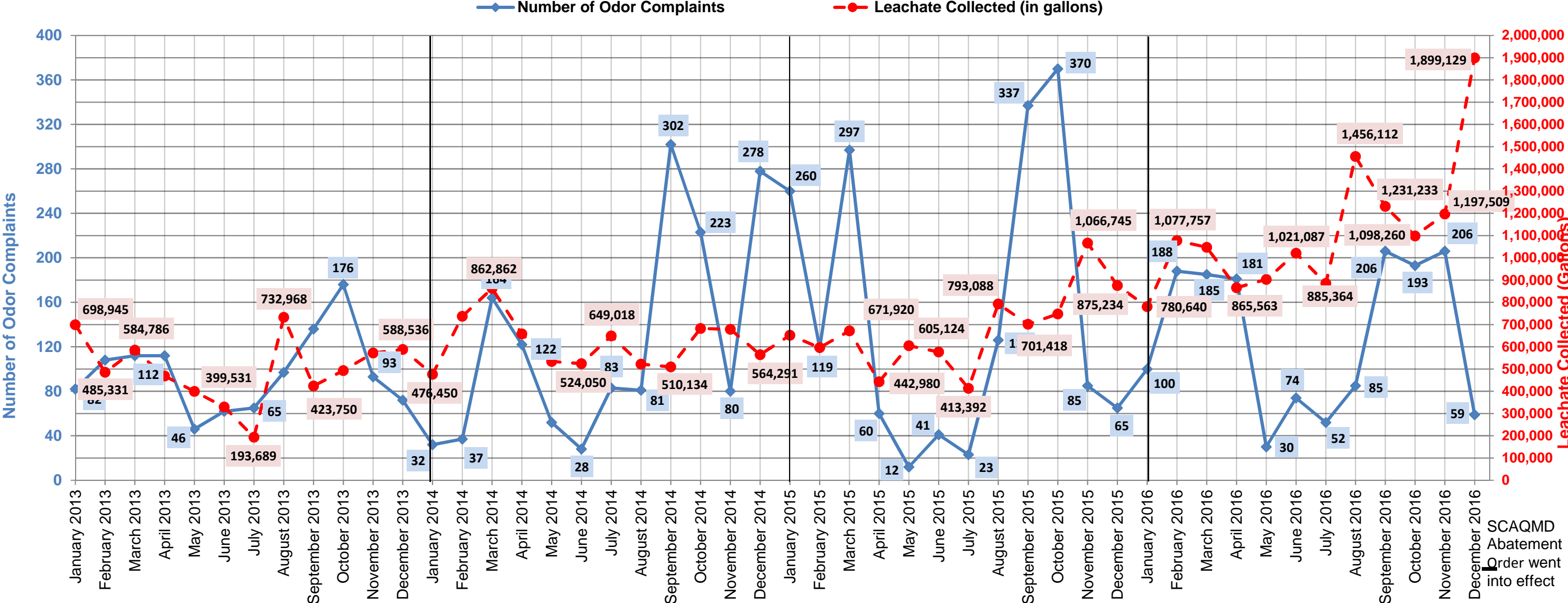
Widespread hydrogen sulfide odor event emanating from the Salton Sea occurred throughout Southern CA.

A 200-HP blower was installed at Flare 8.

50 pumps were installed in gas wells.

Note: 1.) Number of complaints are based on AQMD's Complaint Summary Monthly Reports.  
2.) Number of Notices of Violation are based on SCAQMD's Facility Information Detail (FIND) website.  
3.) Schools nearby are usually off in early June and resume around 2nd week of August.  
4.) Leachate collected is based on Republic Services' Summary of Water Sources Quarterly Reports to the SCL -

Leachate Collected and Number of Odor Complaints - Sunshine Canyon Landfill



60 vertical gas wells and 27 pumps were installed.

14 vertical gas wells installed.

Flare 10 became operational.

Gas well was damaged.

14 vertical gas wells were installed.

Ponded water, erosional rills, damaged protective soil layer, and trash exposure from a storm event were observed.

From Dec. 2013 to April 2014, 30 vertical gas wells and 25 pumps were installed.

9,500 linear feet of gas lines and 1,900 linear feet of header lines were installed.

24 vertical gas wells were installed.

July 21 - startup of the Gas-to-Energy facility commenced.

September 1 - Gas-to-Energy facility became fully operational.

29 vertical gas wells were installed, an 18-inch header was installed on the City-side, and well dewatering program was upgraded.

Trash exposure on several occasions were observed due to intense rainfall.

Nov. 3 - trash exposure was observed due to improper covering of trash from the previous Saturday evening.

11 vertical gas wells were installed.

September 16 - approximately 100' x 100' area of settlement within the existing refuse area on the City South portion was observed. Remediation of the area was completed.

Approx. 5' (Feb 9), 20' (Mar. 18 & 23), and two 20' (April 7) flap in length of ADC material was observed due to high winds overnight.

Oct. 12 - Alternative Daily Cover Pilot Project commenced.

18 vertical gas wells were installed.

April 7 - 2" gas leak at GTE plant. Repair was completed next morning.

Installation of 19 new gas well pumps.

Aug. 24, 6 side slope collectors (CC-3B) were put into service.

July 8 - 6" condensate leak near CC-3B. Repair completed by 8:30 AM.

June 29 - Leaking condensate valve.

June 21 - An approx. 10' ADC panel laid over Cell-3A had lifted overnight.

June 13 to 17 - Three horizontal collectors installed in CC-3B.

Liquid leak from several locations. Repairs completed same day.

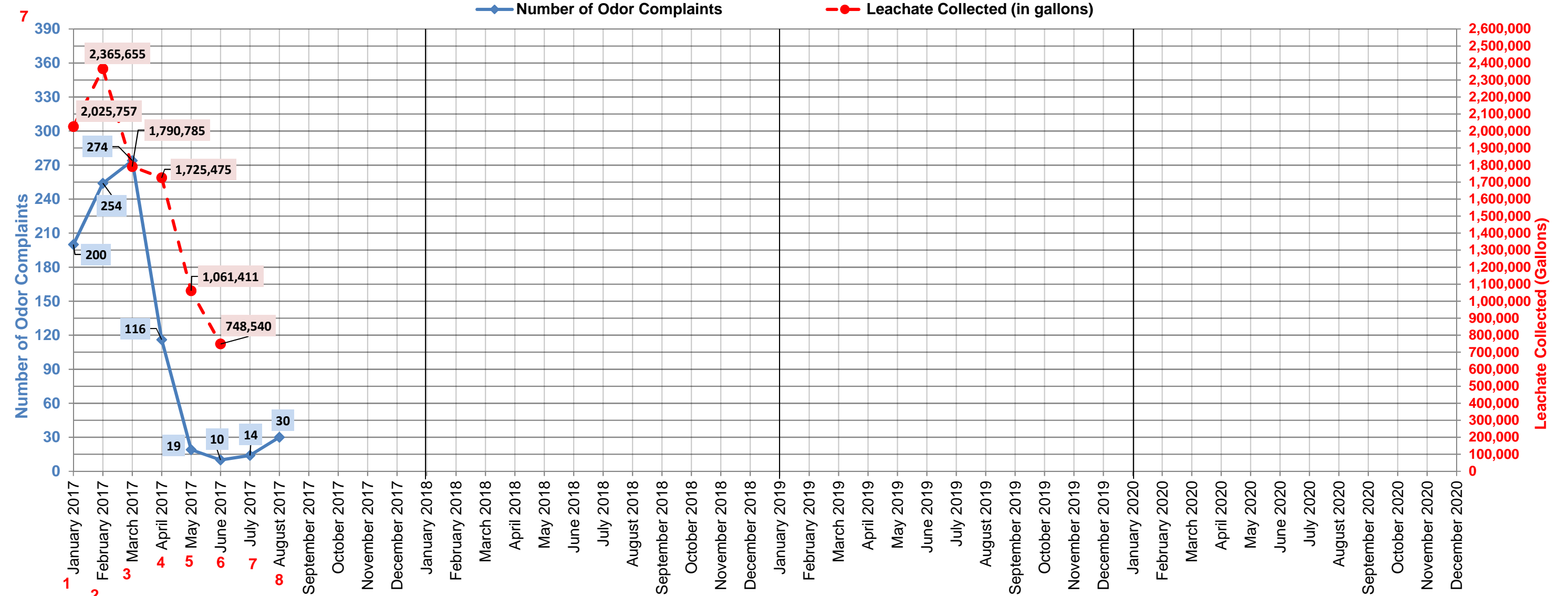
Nov 6 - 200 gal of liquid discharged from well 802.

Note: 1.) Number of complaints are based on AQMD's Complaint Summary Monthly Reports.  
2.) Number of Notices of Violation are based on SCAQMD's Facility Information Detail (FIND) website.  
3.) Schools nearby are usually off in early June and resume around 2nd week of August.  
4.) Leachate collected is based on Republic Services' Summary of Water Sources Quarterly Reports to the SCL -

Updated on September 2017



Leachate Collected and Number of Odor Complaints - Sunshine Canyon Landfill



1. Heavy rain resulted in stormwater spilled onto SF Road; Due to rain, some cover areas were eroded and exposed trash; Drilling of 15 vertical gas wells;

2. Heavy rain caused erosion of cover material in certain areas and trash was exposed; continue drilling of 15 vertical gas wells; Condensate leaked from well 813 during installation of well pump.

3. Landfill rec'd trash starting from 9:00 AM; a subsurface liquid line near main haul was damage and caused 3,000 gals spilled across main haul road with some entered into storm drain channel.
4. As of 04/24, 100 new vertical gas wells have been installed and pumps are being installed to address liquids.

5. 05/14 A gas header line near main haul road was leaked and caused 200 gal discharge onto main haul road and some entered into storm drain channel and Terminal Basin.

6. 06/08 shortly after 8 AM, a slide occurred on the western edge of the CC-4 Part 2 subgrade excavation.  
- 06/22 A leak from a blind flange on a 4 inch leachate line on the City North portion of the site.
7. 07/18 A leak from a blind flange on a 4 inch leachate line on the City North portion of the site and caused 200 gal release into trench at toe of CC-3B and onto main haul road.

8. 08/16 Repair work for the landslide that occurred on the western edge of CC-4 Part 2 subgrade excavation was completed.  
- 08/24 LEA issued a violation for gas and monitoring control (a probe registered an exceedance of over 5% for 27 CCR 20921. Perimeter probe P-207A malfunctioned, registered 59.1% methane).  
- 08/24 Around 8:20 AM a force main line was struck by a scraper in the City portion of the site near CC-4 Part 1, Approx. 1,500 gallons of liquid discharged in the surrounding area.  
- 08/25 at 8:55 AM, a pipe ruptured causing 600 gallons of dust control water to discharge into the concrete lined channel and entered the Terminal Basin (TB) but contained by gabion wall in TB and then water was pump out at 2:30 pm.

Note: 1.) Number of complaints are based on AQMD's Complaint Summary Monthly Reports.  
2.) Number of Notices of Violation are based on SCAQMD's Facility Information Detail (FIND) website.  
3.) Schools nearby are usually off in early June and resume around 2nd week of August.  
4.) Leachate collected is based on Republic Services' Summary of Water Sources Quarterly Reports to the SCL -