

August 8, 2019

TO: Members of The Facility & Plan Review Subcommittee
Los Angeles County Solid Waste Management Committee/
Integrated Waste Management Task Force

FROM: Vu Truong, Staff

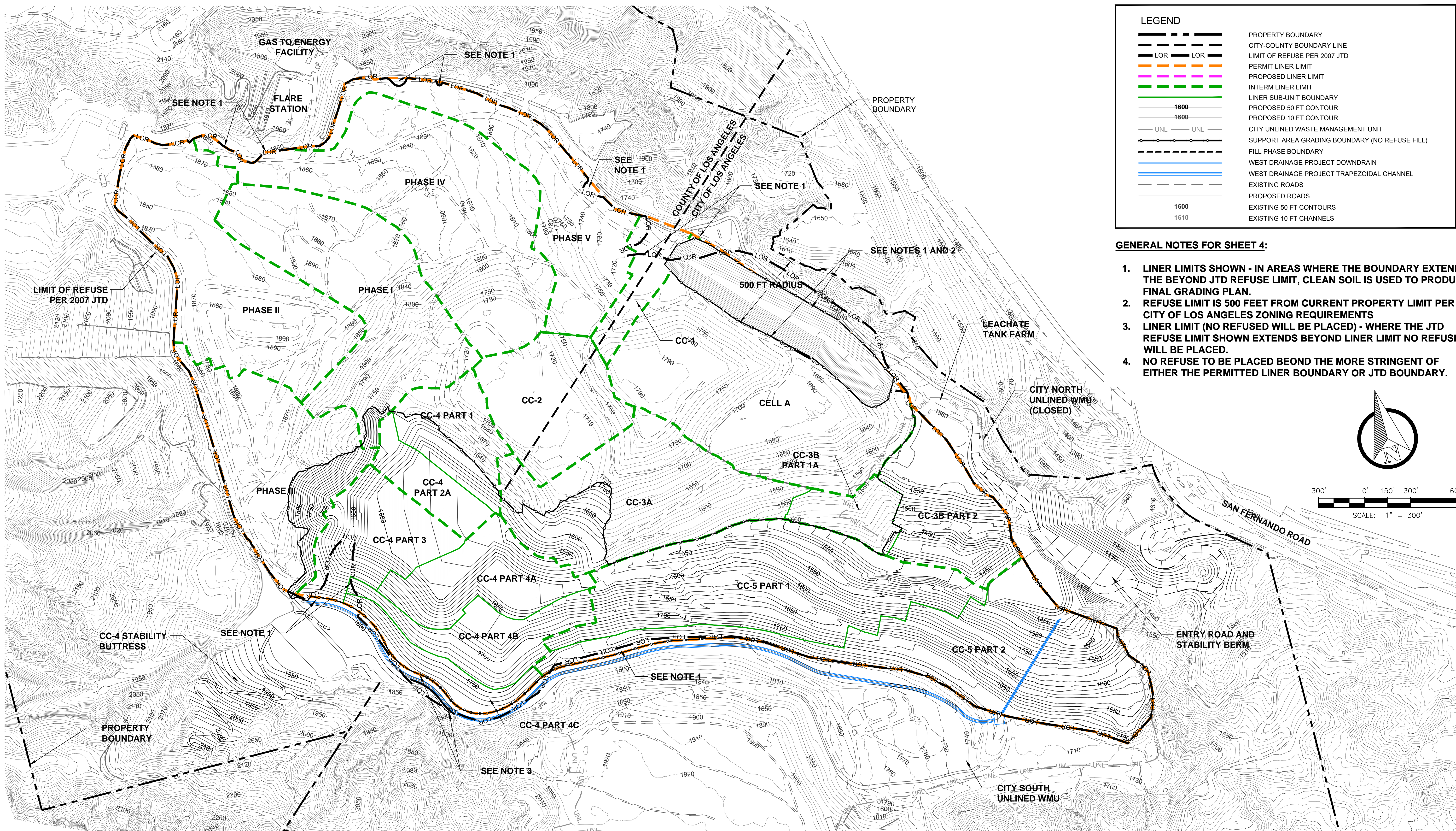
**STAFF REPORT
CELL CONSTRUCTION STATUS REPORT
AT SUNSHINE CANYON CITY/COUNTY LANDFILL**

The staff report provides an update of the Cell Phase Construction including the cell phase designation, location, capacity, and timeframe of each phase construction. See Enclosed plan, prepared and provided by Republic Services, showing Phase locations at Sunshine Canyon Landfill.

Cell Phase Construction

- Cell CC-4 Parts 1 and 2 - Landfill's current active working face
- CC-4 Part 3 - expected to begin operations October 2019 (est. capacity 4,985,658 CY)
- CC-4 Part 4A - expected to begin operations around 2020 (est. capacity 2,648,112 CY)
- CC-4 Part 4B - expected to begin operations around 2021 (est. capacity 2,724,515 CY)
- CC-4 Part 4C - expected to begin operations around 2022 (est. capacity 4,924,543 CY)
- CC-5 Part 1 - expected to begin operations around 2023 (est. capacity 16,606,718 CY)
- Setback Area - expected to begin operations around 2027 (est. capacity 2,492,020 CY)
- CC-5 Part 2 - expected to begin operations around 2028 (est. capacity 23,081,064 CY)

Please note, the information above and in the enclosed plan was provided by Republic Services in their Fill Sequencing Plan submittal to Public Works. The plan and information are still under review by Public Works and are therefore subject to change.



- GENERAL NOTES FOR SHEET 4:**
1. LINER LIMITS SHOWN - IN AREAS WHERE THE BOUNDARY EXTENDS THE BEYOND JTD REFUSE LIMIT, CLEAN SOIL IS USED TO PRODUCE FINAL GRADING PLAN.
 2. REFUSE LIMIT IS 500 FEET FROM CURRENT PROPERTY LIMIT PER CITY OF LOS ANGELES ZONING REQUIREMENTS
 3. LINER LIMIT (NO REFUSED WILL BE PLACED) - WHERE THE JTD REFUSE LIMIT SHOWN EXTENDS BEYOND LINER LIMIT NO REFUSE WILL BE PLACED.
 4. NO REFUSE TO BE PLACED BEOND THE MORE STRINGENT OF EITHER THE PERMITTED LINER BOUNDARY OR JTD BOUNDARY.

P:\SITES\SUNSHINE CYN LF FILL SEQUENCE PLANS - 2018\DWG SETS\SO17.1029-SCL-FSP-04-MASS EXCAVATION 2018 - CLOSURE.DWG October 1, 2018 - 12:39 PM BY: JORGE AMAYA

This drawing has not been published but rather has been prepared by Geo-Logic Associates, Inc. for use by the client named in the title block, solely in respect of the construction operation, and maintenance of the facility named in the title block. Geo-Logic Associates, Inc. shall not be liable for the use of this drawing on any other facility or for any other purpose.

ISSUED FOR REVIEW
ORIGINAL DRAWING SIZE IS 22" X 34"
REFERENCE AERIAL TOPOGRAPHY BASED ON MARCH 5, 2018 AERIAL SURVEY BY COOPER AERIAL

| REV. NO. | DATE | DESCRIPTION | APPROVED BY |
|----------|------|-------------|-------------|
| | | | |
| | | | |
| | | | |
| | | | |

DATE OF ISSUE: SEPT 2018
DESIGNED BY: C BARRETT
DRAWN BY: J AMAYA
CHECKED BY: C BARRETT
APPROVED BY: R JOHNSON



2777 EAST GUASTI ROAD
SUITE 1
ONTARIO, CA 91761
(909) 626-2282
www.geo-logic.com



14747 SAN FERNANDO RD.
SYLMAR, CALIFORNIA
91342

SUNSHINE CANYON LANDFILL
FILL SEQUENCE PLANS

MASS EXCAVATION 2018 - CLOSURE

DWG NO.
04

PROJECT NO.
SO17.1029