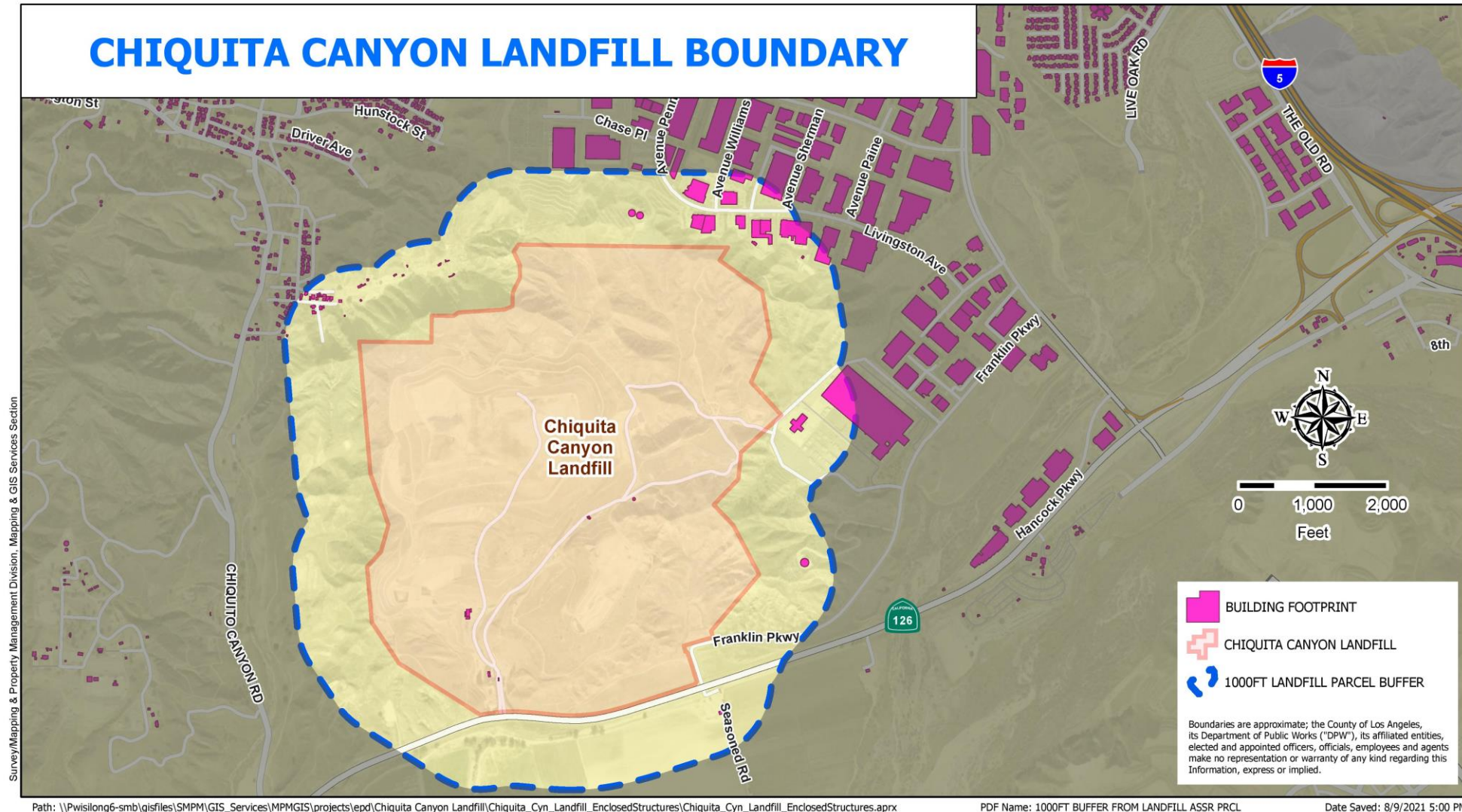


Chiquita Canyon Landfill Gas Migration Monitoring

FACILITY AND PLAN REVIEW
SUBCOMMITTEE

AUGUST 19, 2021

Chiquita Canyon Landfill Site Map

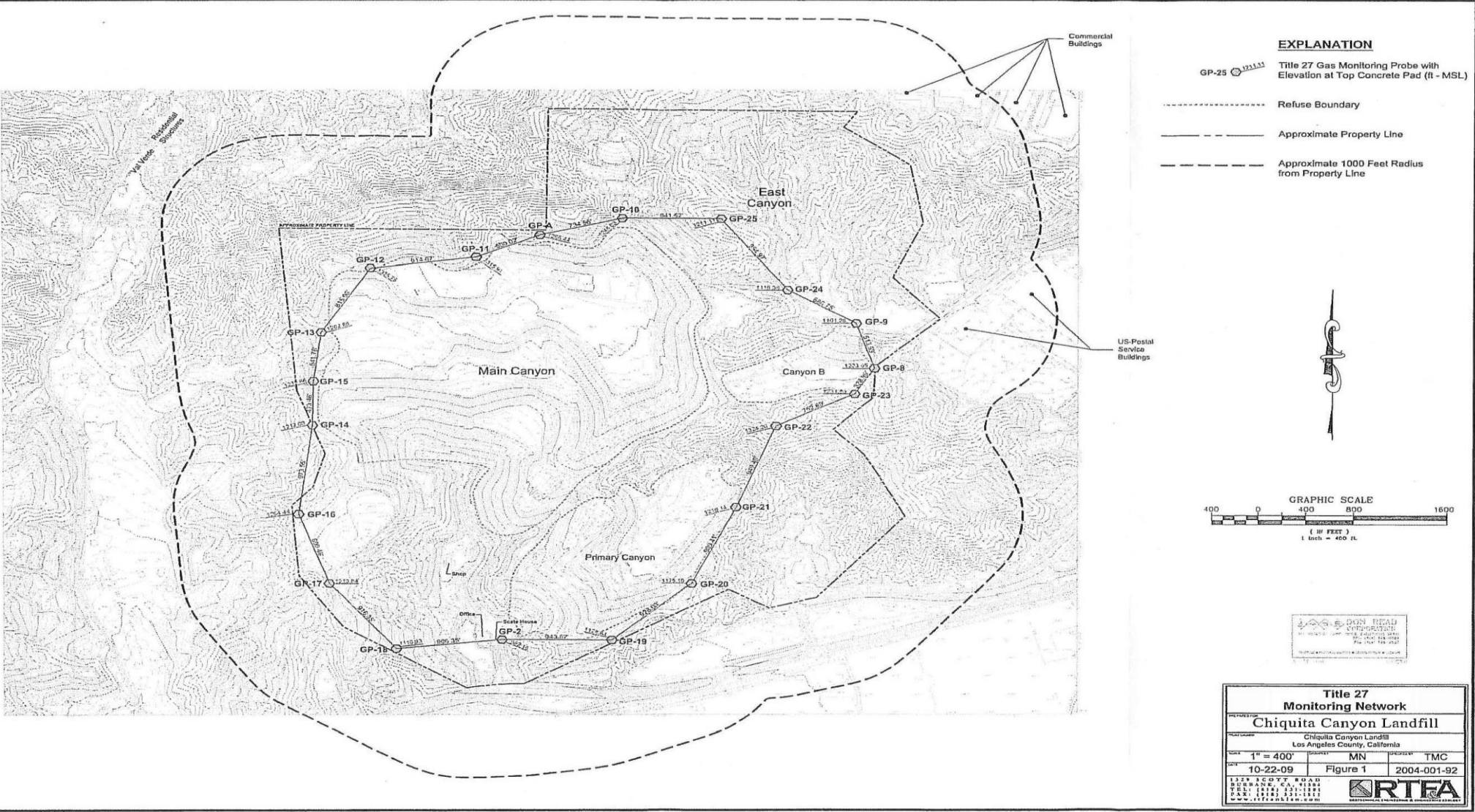


Chiquita Canyon Landfill Site Map



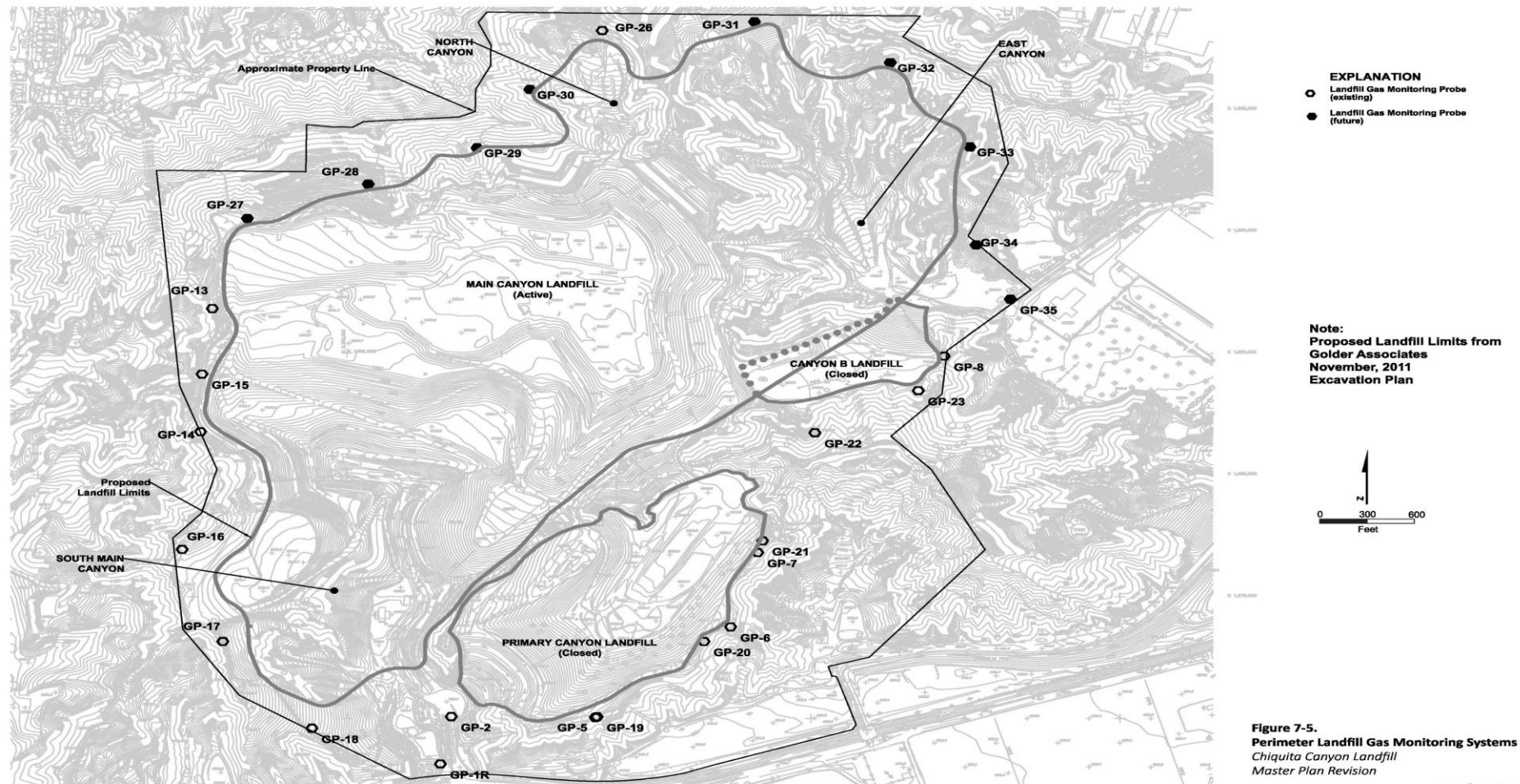
Gas Monitoring Well Locations

Well Network Map
extracted from December
2017 JTD Document



Existing and New Gas monitoring probes

Map extracted from 2017
Final EIR



Source: RTF&A, 2012.

E:\0504111143005C\0432307.11.02.07 CCL_gas_monitoring_2012_revai 1/17

ch2m:

Landfill Monitoring Well Readings (April – June 2021)

April

CHIQUITA CANYON LANDFILL (1150.1)
PERIMETER GAS MONITORING DATA SHEET

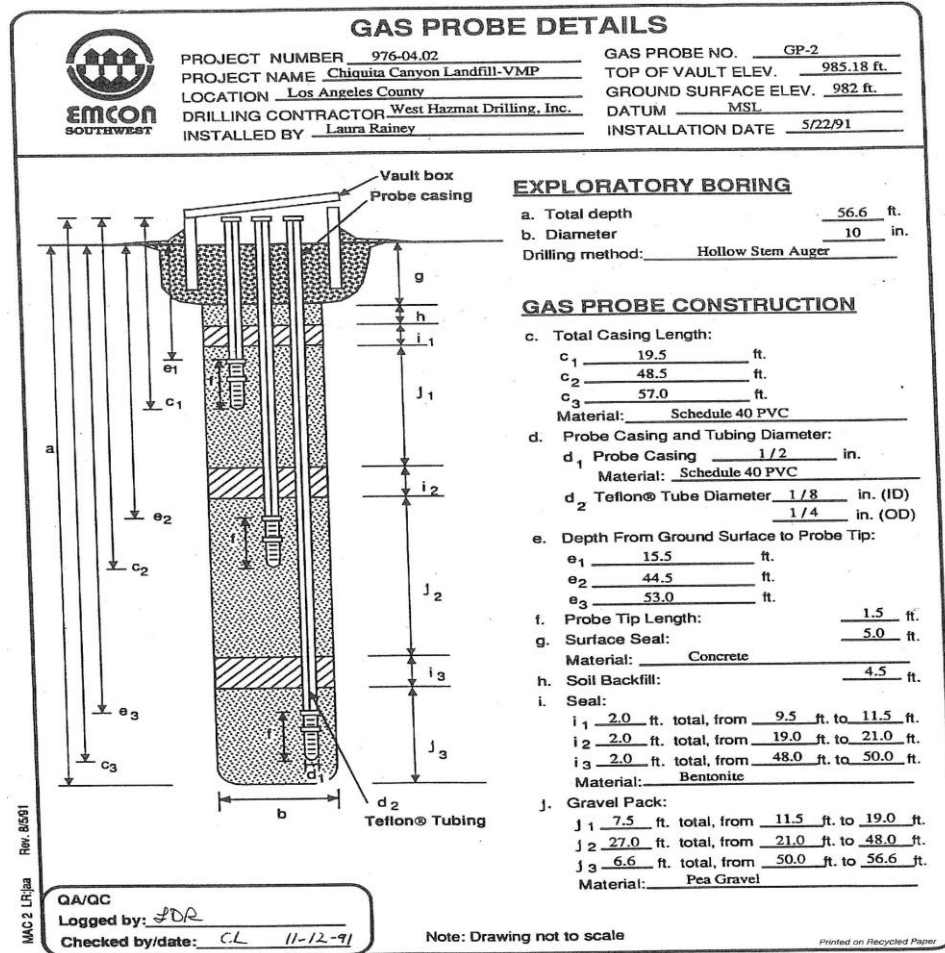
Date	4-29-21		Weather Conditions		Sunny & Clear		Temp		80°		F
Technician	Robert Johns		Wind Speed (MPH) & Direction		13 mph ENE		Barometric Pressure		28.57		in. Hg
Inst	GEM		Model		5000		Serial #		6500530		
Probe Number	Time	Date	CH4% (% Vol)	CO2%	O2%	Bal %	Evac. (Sec.)	Pressure (+/- in. w.c.)	Comments		
GP-A-10	0819	4-29-21	0.0	0.1	16.3	83.6	25	-1.0			
51	0820		0.0	0.0	16.3	83.7	131	-1.59			
102	0822		0.0	0.0	16.3	83.7	263	+0.1			
151.5	0826		0.0	0.0	16.4	83.6	389	-1.48			
GP-1R-25	1000		0.0	2.6	14.2	83.1	62	1.0			
38	1001		0.0	1.5	15.0	83.5	98	1.0			
47	1004		0.0	0.7	15.8	83.5	121	1.0			
GP-2-15.5	0940		0.0	2.6	15.1	82.3	38	-0.1			
44.5	0941		0.0	1.9	15.3	82.8	113	1.07			
53	0945		0.0	0.1	16.4	83.5	136	1.05			
GP-5-10	0920		0.0	0.1	16.2	83.7	25	+0.3			
45	0921		0.0	0.0	16.3	83.7	116	+0.3			
93	0924		0.0	0.0	16.4	83.6	240	+0.4			
GP-6-10	0910		0.0	0.2	16.0	83.8	25	+0.2			
30	0911		0.0	0.6	15.9	83.5	77.5	+0.2			
60	0914		0.0	0.0	16.2	83.8	155	+0.3			
GP-7-10	0859		0.0	0.2	15.9	83.9	25	+0.9			
30	0900		0.0	0.4	15.7	83.9	77	+0.9			
60	0903		0.0	0.0	16.1	83.9	155	+0.5			
GP-8-10	0849		0.0	0.2	15.8	84.0	25	+0.8			
60	0850		0.0	0.0	15.9	84.1	155	+0.4			
120	0853		0.0	0.0	15.9	84.1	310	-1.98			
GP-9-25	0840		0.0	0.4	15.6	84.0	64	+0.9			
55	0843		0.0	1.8	14.7	83.5	142	+0.8			
83	0845		0.0	0.0	16.0	84.0	214	+0.8			
GP-10-22	0831		0.0	1.7	15.2	83.1	56	+0.5			
37	0832		0.0	0.1	15.5	84.4	95	-1.02			
63	0834		0.0	0.0	16.1	83.9	162	-1.80			
87	0838		0.0	0.0	16.1	83.9	224	-1.88			
GP-11-10	0807		0.0	0.0	16.2	83.8	25	-1.14			
70	0808		0.0	0.0	16.3	83.7	180	-1.81			
141	0810		0.0	0.0	16.3	83.7	364	-4.27			
208	0814		0.0	0.0	16.3	83.7	960	-2.61			

CHIQUITA CANYON LANDFILL (1150.1)
PERIMETER GAS MONITORING DATA SHEET

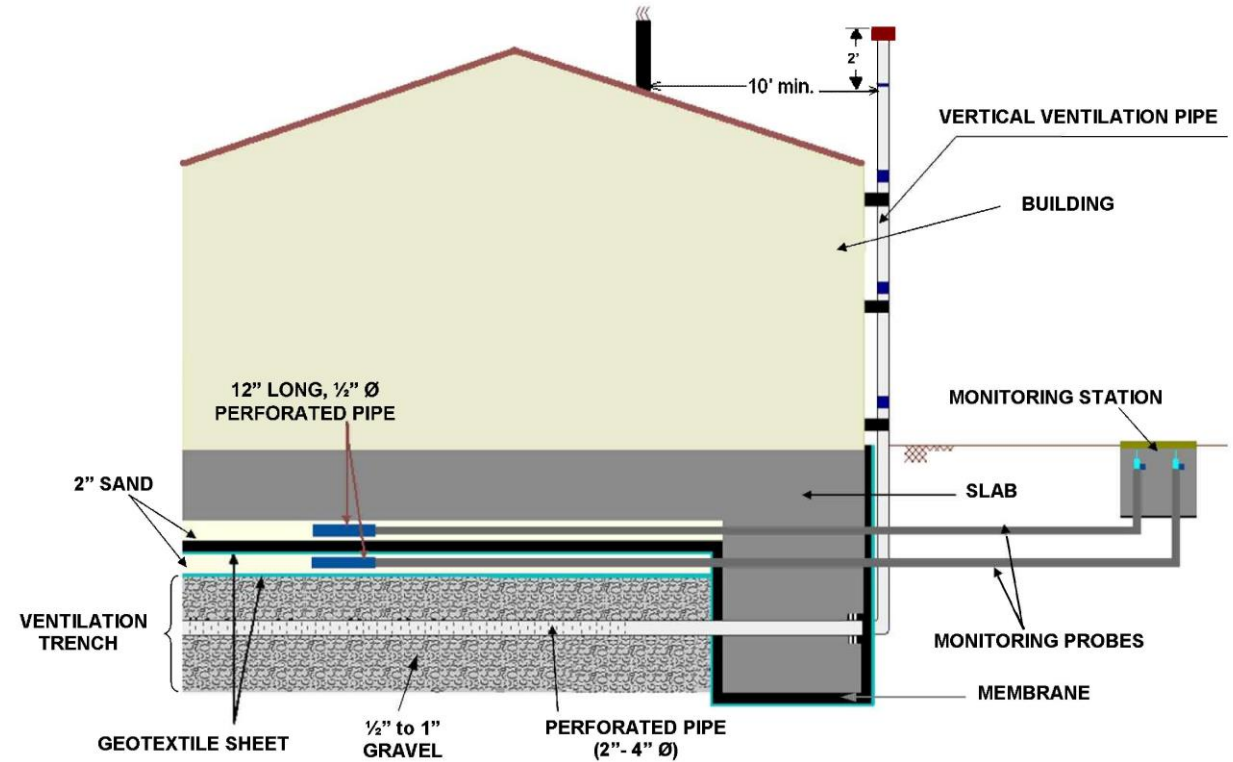
Date	4-29-21		Weather Conditions		Sunny & Clear		Temp		80°		°F	
Technician	Robert Johns		Wind Speed (MPH) & Direction		13 mph		ENE		Barometric Pressure		28.57 in. Hg	
Inst.	GEM		Model		5000		Serial #		4500530			
Probe Number	Time	Date	CH4% (% Vol.)	CO2%	O2%	Bal %	Evac. (Sec)	Pressure (+/- in. w.c.)	Comments			
GP-12-12	0751	4-29-21	0.0	0.1	16.0	83.9	31	+0.2				
38	0753		0.0	0.0	16.1	83.9	98	+0.2				
74	0754		0.0	0.0	16.1	83.9	191	+0.3				
110	0757		0.0	0.0	16.1	83.9	284	+0.2				
224	0801		0.0	0.1	16.0	83.9	1,020	+0.2				
GP-13-10	0742		0.0	0.1	16.0	83.9	25	+1.10				
29	0741		0.0	0.3	15.9	83.8	74	+0.9				
58	0742		0.0	0.8	15.4	83.8	149	-1.28				
87	0744		0.0	1.6	14.3	84.1	224	-3.01				
173	0747		0.0	0.0	15.8	84.2	13.5	-1.40				
GP-14-10	0730		0.0	0.1	15.9	84.0	25	-1.02				
23	0731		0.0	0.1	15.9	84.0	59	-1.10				
44	0732		0.0	0.2	15.9	83.9	113	-1.10				
67	0735		0.0	0.3	15.8	83.9	173	-2.39				
134	0738		0.0	0.0	16.0	84.0	346	-13.96				

Monitoring Well Construction

On-site (Landfill)



Off-site (outside Landfill Property)



**METHANE GAS CONTROL SYSTEM
PASSIVE SYSTEM**

NTS

PLATE 1

**LOS ANGELES COUNTY INTEGRATED WASTE MANAGEMENT TASK FORCE
COUNTYWIDE SITING ELEMENT FACILITY SITING CRITERIA
EVALUATION FORM**

Page extracted
from The Finding
of Conformance
(2018) document

<p>• Landfill surface emissions</p>	<p>Class III land disposal facilities are subject to AQMD rules and regulations which includes installation of a landfill gas control system and perimeter monitoring probes, as well as, implementation of a monitoring program to ensure that landfill gas emissions do not exceed specified AQMD standards.</p>	<p align="center">X</p>		<p>CCL will comply to the conditions as set by the approved CUP in relates to air quality and as required by the SCAQMD. The facility will adopt and implement operational practices to mitigate air quality impacts including, but not limited to, odor, dust, and vehicular air quality impacts at the Facility.</p> <p>The permittee shall use Landfill gas for energy generation at the Facility or other beneficial uses, rather than flaring to the event feasible, and shall obtain all applicable local, State, and/or federal approvals for any such use. Ambient air sampling will be conducted at the Landfill site boundaries to evaluate the potential off-site migration of Landfill emissions. Quarterly and annual reporting to present the results of the preceding activities will be sent to the SCAQMD for review.</p> <p>The facility owner/operator shall protect all enclosed structures on or within 1,000 feet of the disposal area against intrusion of migrating landfill gas in accordance with the requirements of the County of Los Angeles Department of Public Works. In addition, unless otherwise approved by the Los Angeles County Department of Public Works, the landfill's operator shall install a landfill gas collection and removal system and monitoring measures, to ensure zero landfill gas migration beyond the property line (see FOC Condition 18)</p>
<p>F. PROTECTION OF ENVIRONMENTALLY SENSITIVE AREAS</p>				
<p>• Wetlands</p>	<p>Land disposal facilities should be located outside wetlands areas.</p>	<p align="center">X</p>		<p>CCL is not located within a wetland area.</p>



Questions?
