

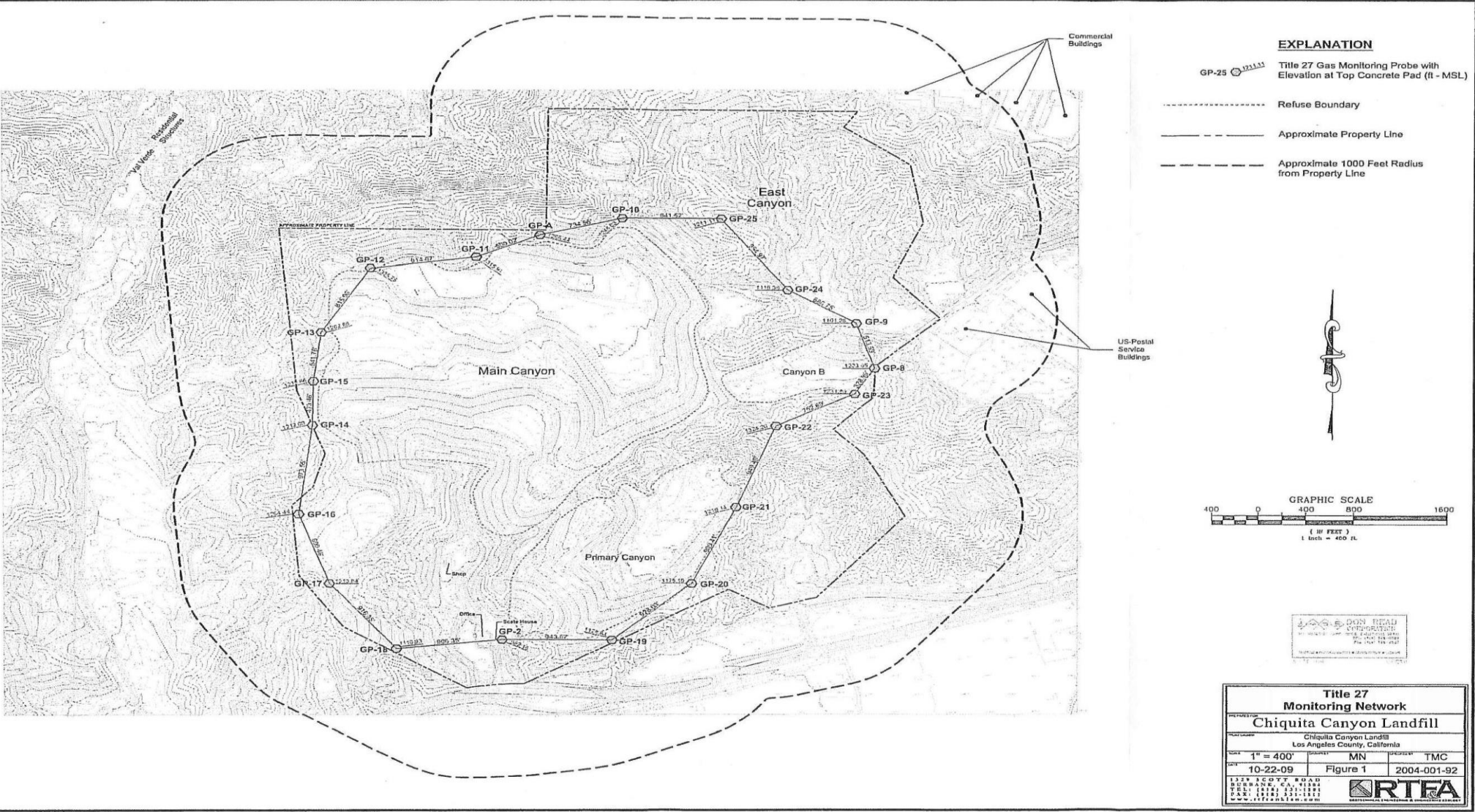
Chiquita Canyon Landfill Gas Migration Monitoring

FACILITY AND PLAN REVIEW
SUBCOMMITTEE

SEPTEMBER 16, 2021

Gas Monitoring Well Locations

Well Network Map
extracted from December
2017 JTD Document



Landfill Monitoring Well Readings (April – June 2021)

April

CHIQUITA CANYON LANDFILL (1150.1)
PERIMETER GAS MONITORING DATA SHEET

101

Date 4-29-21 Weather Conditions Sunny & Clear
 Technician Robert Johns Temp 82° °F
 Inst GEM Model 5000 Wind Speed (MPH) & Direction 13 mph ENE
 Serial # 4580530 Barometric Pressure 29.57 in. Hg

Probe Number	Time	Date	CH4% (% Vol.)	CO2%	O2%	Bal %	Evac. (Sec)	Pressure (+/- in. w.c.)	Comments
GP-A-10	0819	4-29-21	0.0	0.1	16.3	83.6	25	-1.0	
51	0820		0.0	0.0	16.3	83.7	131	-1.57	
102	0822		0.0	0.0	16.3	83.7	263	-1.01	
151.5	0826		0.0	0.0	16.4	83.6	389	-1.46	
GP-1R-28	1001		0.0	2.6	14.2	83.1	62	1.0	
38	1001		0.0	1.5	15.0	83.5	98	1.0	
47	1004		0.0	0.7	15.8	83.5	121	1.0	
GP-2-15.5	0940		0.0	2.6	15.1	82.3	38	-1.01	
44.5	0941		0.0	1.9	15.3	82.8	113	-1.07	
53	0945		0.0	0.1	16.4	83.5	136	-1.05	
GP-5-10	0920		0.0	0.1	16.2	83.7	25	-1.03	
49	0921		0.0	0.0	16.3	83.7	118	-1.03	
93	0924		0.0	0.0	16.4	83.6	240	-1.04	
GP-6-10	0910		0.0	0.2	16.0	83.8	25	-1.02	
30	0911		0.0	0.6	15.9	83.5	77.5	-1.02	
60	0914		0.0	0.0	16.2	83.8	155	-1.03	
GP-7-10	0859		0.0	0.2	15.9	83.9	25	-1.09	
30	0900		0.0	0.4	15.7	83.9	77	-1.09	
60	0903		0.0	0.0	16.1	83.9	155	-1.05	
GP-8-10	0849		0.0	0.2	15.8	84.0	25	-1.05	
60	0850		0.0	0.0	15.9	84.1	155	-1.04	
120	0853		0.0	0.0	15.9	84.1	310	-1.98	
GP-9-25	0842		0.0	0.4	15.6	84.0	64	-1.09	
55	0843		0.0	1.8	14.7	83.5	142	-1.08	
83	0845		0.0	0.0	16.0	84.0	214	-1.08	
GP-10-22	0831		0.0	1.7	15.2	83.1	56	-1.05	
37	0832		0.0	0.1	15.5	84.4	95	-1.02	
63	0834		0.0	0.0	16.1	83.9	162	-1.80	
87	0838		0.0	0.0	16.1	83.9	224	-1.88	
GP-11-10	0807		0.0	0.0	16.2	83.8	25	-1.14	
70	0808		0.0	0.0	16.3	83.7	180	-1.81	
141	0810		0.0	0.0	16.3	83.7	364	-1.27	
208	0814		0.0	0.0	16.3	83.7	960	-1.61	

CHIQUITA CANYON LANDFILL (1150.1)
PERIMETER GAS MONITORING DATA SHEET

101

Date 4-29-21 Weather Conditions Sunny & Clear
 Technician Robert Johns Temp 82° °F
 Inst GEM Model 5000 Wind Speed (MPH) & Direction 13 mph ENE
 Serial # 4580530 Barometric Pressure 29.57 in. Hg

Probe Number	Time	Date	CH4% (% Vol.)	CO2%	O2%	Bal %	Evac. (Sec)	Pressure (+/- in. w.c.)	Comments
GP-12-12	0751	4-29-21	0.0	0.1	16.0	83.9	31	-1.02	
38	0752		0.0	0.0	16.1	83.9	98	-1.02	
74	0754		0.0	0.0	16.1	83.9	191	-1.03	
110	0757		0.0	0.0	16.1	83.9	284	-1.02	
224	0801		0.0	0.1	16.0	83.9	1,020	-1.02	
GP-13-10	0742		0.0	0.1	16.0	83.9	25	-1.10	
29	0741		0.0	0.3	15.9	83.8	74	-1.09	
58	0742		0.0	0.8	15.4	83.8	149	-1.28	
87	0744		0.0	1.6	14.3	84.1	224	-1.01	
173	0747		0.0	0.0	15.8	84.2	13.5	-1.40	
GP-14-10	0730		0.0	0.1	15.9	84.0	25	-1.02	
23	0731		0.0	0.1	15.9	84.0	59	-1.10	
44	0732		0.0	0.2	15.9	83.9	113	-1.10	
67	0735		0.0	0.3	15.8	83.9	173	-1.39	
134	0738		0.0	0.0	16.0	84.0	346	-1.96	

Monitoring Well Construction

On-site (Landfill)

Extracted from
December 2017
JTD Document

EMCON SOUTHWEST		GAS PROBE DETAILS	
PROJECT NUMBER	976-04.02	GAS PROBE NO.	GP-2
PROJECT NAME	Chiquita Canyon Landfill-VMP	TOP OF VAULT ELEV.	985.18 ft.
LOCATION	Los Angeles County	GROUND SURFACE ELEV.	982 ft.
DRILLING CONTRACTOR	West Hazmat Drilling, Inc.	DATUM	MSL
INSTALLED BY	Laura Rainey	INSTALLATION DATE	5/22/91

EXPLORATORY BORING

a. Total depth 56.6 ft.
b. Diameter 10 in.
Drilling method: Hollow Stem Auger

GAS PROBE CONSTRUCTION

c. Total Casing Length:
c₁ 19.5 ft.
c₂ 48.5 ft.
c₃ 57.0 ft.
Material: Schedule 40 PVC

d. Probe Casing and Tubing Diameter:
d₁ Probe Casing 1/2 in.
Material: Schedule 40 PVC
d₂ Teflon® Tube Diameter 1/8 in. (ID)
1/4 in. (OD)

e. Depth From Ground Surface to Probe Tip:
e₁ 15.5 ft.
e₂ 44.5 ft.
e₃ 53.0 ft.

f. Probe Tip Length: 1.5 ft.
g. Surface Seal: 5.0 ft.
Material: Concrete

h. Soil Backfill: 4.5 ft.

i. Seal:
i₁ 2.0 ft. total, from 9.5 ft. to 11.5 ft.
i₂ 2.0 ft. total, from 19.0 ft. to 21.0 ft.
i₃ 2.0 ft. total, from 48.0 ft. to 50.0 ft.
Material: Bentonite

j. Gravel Pack:
j₁ 7.5 ft. total, from 11.5 ft. to 19.0 ft.
j₂ 27.0 ft. total, from 21.0 ft. to 48.0 ft.
j₃ 6.6 ft. total, from 50.0 ft. to 56.6 ft.
Material: Pea Gravel

QA/QC
Logged by: DR
Checked by/date: CL 11-12-91

Note: Drawing not to scale

Printed on Recycled Paper

Monitoring Well Information

Table 1
Perimeter Gas Monitoring Points

	Well ID	Surface Elevation (ft-MSL)	Base Refuse Elevation (ft-MSL)	Title 27 Calculate d Depth (ft-bgs)	Ground- water Elevation (ft-MSL)	Depth to Ground- water (ft-bgs)	Boring Depth (ft-bgs)	Monitoring Probe Depths					Bentonite Seal Thickness (ft)	Well Spacing (ft)
								Shallow ==> Deep (ft-bgs)						
Existing Wells	GP-A	1266.44	1000	266	1112.4	154.0	154	10	51	102	152		4 to 5	590 to GP-11
	GP-2	982.16	1000	none	925.0	57.2	56.6	15.5	44.5	53			2	944 to GP-19
	GP-8	1223.95	1100	124	1014.0	210.0	120	10	60	120			5	514 to GP-9
	GP-9	1101.25	1100	1	1015.0	86.3	88.5	25	55	83			5+	687 to GP-24
	GP-10	1246.03	1000	246	1145.0	101.0	91.12	20	35	60	91		5+	735 to GP-A
	GP-11	1315.91	1000	316	1104.1	211.8	250	10	70	141	208		4 to 5	915 to GP-12
	GP-12	1335.78	1000	336	1097.8	238.0	260	12	38	74	110	224	5+	816 to GP-13
	GP-13	1262.88	1000	263	1080.0	182.9	174	10	29	58	87	173	5+	542 to GP-15
	GP-14	1212.00	1000	212	1066.0	146.0	165	10	23	44	67	134	5+	974 to GP-16
New Wells	GP-15	1215.5	1000	215.5	1106.37	109.18	120	10	40	60	90	115	5+	473 to GP-14
	GP-16	1254.2	1000	254.2	1002.74	251.50	270	10	85	154	210	255	5+	800 to GP-17
	GP-17	1213.6	1000	213.6	998.70	214.89	240	10	55	105	149	235	5+	916 to GP-18
	GP-18	1110.7	1000	110.7	960	151	120.9	10	38	58	86	115	5+	906 to GP-2
	GP-19	1128.6	1000	128.6	928	201	130	10		84		116	5+	928 to GP-20
	GP-20	1174.9	1000	174.9	940	235	179	60		105		173	5+	909 to GP-21
	GP-21	1217.9	1000	217.9	989.97	227.92	240	10		90		232	5+	949 to GP-22
	GP-22	1324.0	1000	324.0	1037.56	286.40	310	50		155		305	5+	753 to GP-23
	GP-23	1231.6	1100	131.6	1022	210	132.5	35		77		132	5+	329 to GP-8
	GP-24	1118.1	1000	118.1	1058.13	60.0	72	12		40		70	5+	965 to GP-25
	GP-25	1210.9	1000	210.9	1136.23	74.63	88	14		50		80	5+	842 to GP-10



Questions?
