



# Impacts of

AB 1857 (Garcia, 2022) and  
SB 54 (Allen, 2022) on  
Conversion Technologies



# Overview

---

- Summary of solid waste processing technologies
- CT Developments in the US and California
- Misconceptions of CTs
- Senate Bill (SB) 54 and Assembly Bill (AB) 1857
- What do we want and don't want from CTs?
- Discussion



Organic Waste

- Anaerobic Digestion
- Composting



Biomass

- Biomass Conversion



**AB 939 Diversion Credit.**

Biosolids/digestate

- Biosolid Conversion



**Considered as Disposal; No Credit and Needs to be in the CSE**

MRF Residuals

- EMSW —AB1126 (2013)



# CT Facilities in the United States

---



Phoenix Energy



Red Rock Biofuels



# Demonstration Projects

---



Sierra Energy



Kore

# Misconceptions



**CTs are incinerators in disguise.**

**CTs are different from incinerators because they do not burn waste.**

CTs will continue to pollute the air.

CTs generate minimal air pollutants.

CTs discourage source reduction, resulting in extraction of fossil fuels and continued transport of plastic waste.

CTs are needed to manage plastics that cannot be prevented or recycled. CTs also create renewable fuel and other products which reduce transportation emissions and fossil fuel demand.



# SB 54 and AB 1857

---



**SB 54** requires plastic packaging to be recyclable but excludes CTs from acceptable recycling practices.

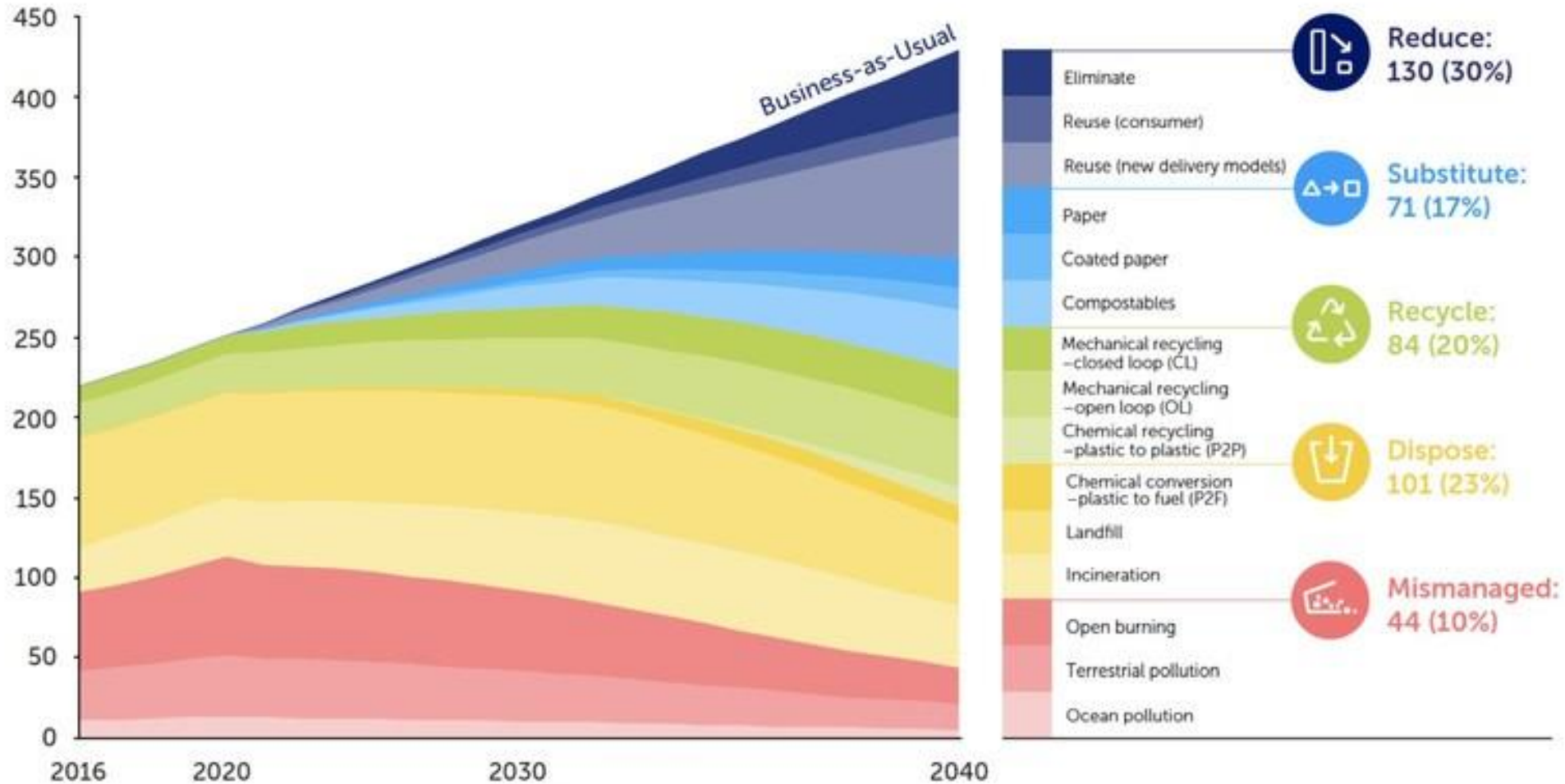
## **AB 1857**

- repeals 10% diversion credit for transformation and CTs.
- prohibits proposed Zero Waste Equity Grant funding to be used for CTs.



There is a credible path to significantly reduce plastic leakage into the ocean but only if all solutions are implemented concurrently, ambitiously, and starting immediately

Million metric tons per year



This 'wedges' figure shows the share of treatment options for the plastic that enters the system over time under the System Change Scenario. Any plastic that enters the system has a single fate, or a single 'wedge.' The numbers include macroplastic and microplastic.

“Wedge Analysis” graph from PEW research.



# CTs are not for Organic Waste

Examples

---



Anaerobic Digestion  
Composting



Biomass Conversion

# CTs are not for the Following

Ordinance or Legislation to Prohibit/Reduce sale of Product: Examples

Single-use



Reusable

Difficult to recycle



Compostable  
or  
Recyclable

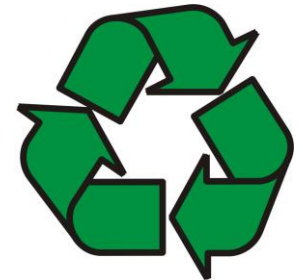
Hazardous



Alternative  
commodity

# Extended Producer Responsibility Circular Economy -Examples

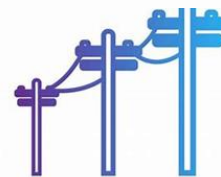
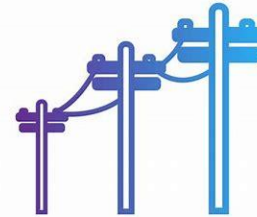
---





# No Circular Economy - CTs???

## Examples





# Discussion



or

