

## **ATTACHMENT I**

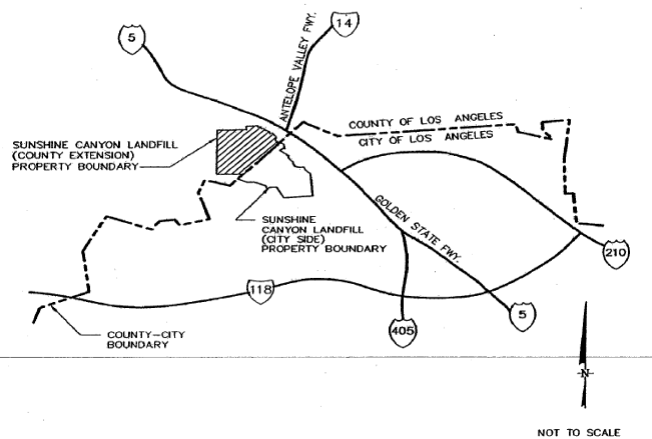
### **PowerPoint Presentation on Sunshine Canyon Landfill (County Extension) Finding of Conformance**

# Finding of Conformance Sunshine Canyon Landfill - County Extension



February 8, 2007

Martins Aiyetiwa  
County of Los Angeles  
Department of Public Works



## Overview

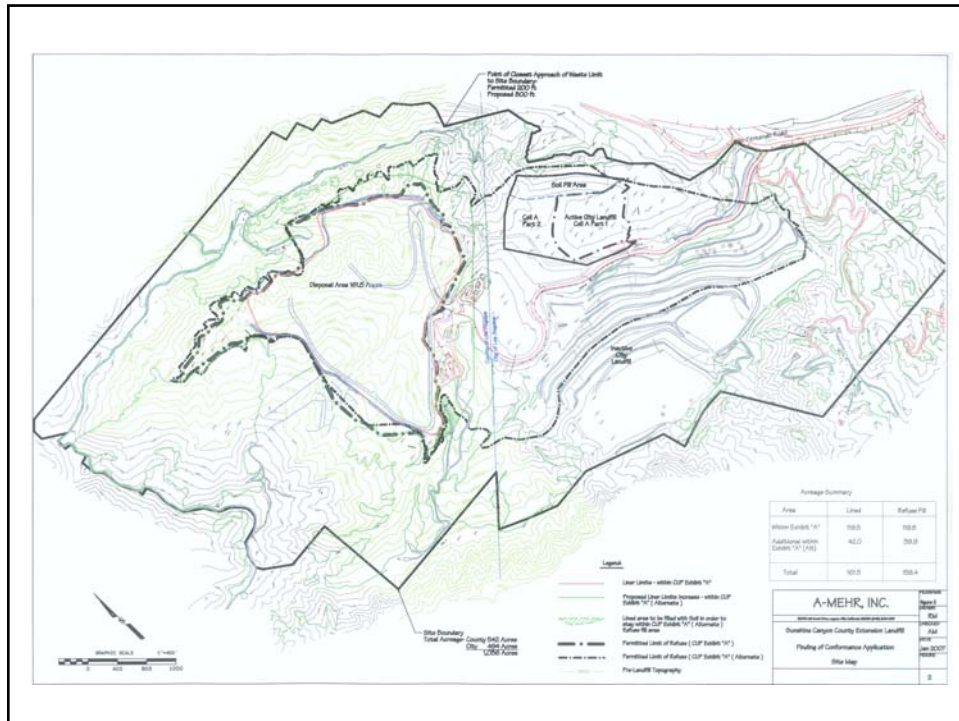
- Facility Operator is BFI, a subsidiary of Allied Waste Inc.
- Facility operating under CUP 86-312(5)
  - Estimated air space volume: 23.5 million cubic yards
  - Disposal capacity of approx. 16.9 million tons of solid waste, within a waste footprint stated as 215 acres
- BFI proposes to utilize a portion of the “bridge area” through development of Phases V, VI & VII
- Total design capacity is estimated at 25.4 million tons (a net increase of 9.5 million tons)
- Remaining disposal capacity is about 11.2 million tons (as of October 19, 2006)

3

## Overview Cont'd

- Replacement CUP 00-194-(5) was approved on February 6, 2007 by the County Board of Supervisors
- The project is designed to comply with the provisions of Condition 18 of Replacement CUP 00-194-(5)
- If facility is operated as a combined City/County Landfill, Termination Date is February 5, 2037
- If City and County Landfills are jointly operated, the total capacity for both is 90 million tons, including the 16.9 million currently permitted in “Exhibit A”

4



## Request Before the Task Force

- BFI requests that the Task Force consider issuance of a FOC pursuant to Section 10.1 of the Countywide Siting Element dated June 1997.
- Issuance of a FOC would include the addition of Phases V, VI, & VII, which comprise a portion of the “bridge area”

## Item History

- On August 15, 1991, The Task Force granted a FOC with the Los Angeles County Solid Waste Mgmt. Plan, for the facility operation in the unincorporated Los Angeles County area.
- On April 17, 2003, the Task Force also issued an FOC with the Countywide Siting Element, for the portion in the City of Los Angeles.

7

## Options for the Task Force

- Grant the FOC as submitted by staff
- Grant the FOC as submitted by staff with changes/modifications
- Request further information and/or analysis
- Deny the FOC and state reasons for denial

8

## Staff's Conclusion and Recommendation

- Staff find that the proposal is consistent with the goals and policies of the Countywide Siting Element and its Siting Criteria.
- Staff recommends the Task Force adopt Option one: Grant the FOC as submitted by staff.


9

## Project Summary and Findings

- Currently Permitted Limits of Fill:
  - 215 acres with 16.9 million tons [CUP 86-312-(5) "Exhibit A"]
  - 119.5 acres usable with 15.9 million tons
- Proposed Limits of Fill:
  - "Exhibit A" usable acreage limit plus a portion of the "bridge area" totaling 161.5 acres usable with 25.4 million tons
- Remaining Capacity:
  - Excluding proposed phases 1.7 million tons (as of 10/19/06)
  - Including proposed phases 11.2 million tons (as of 10/19/06)
- Proposed Design Capacity Increase:
  - 9.5 mil. tons

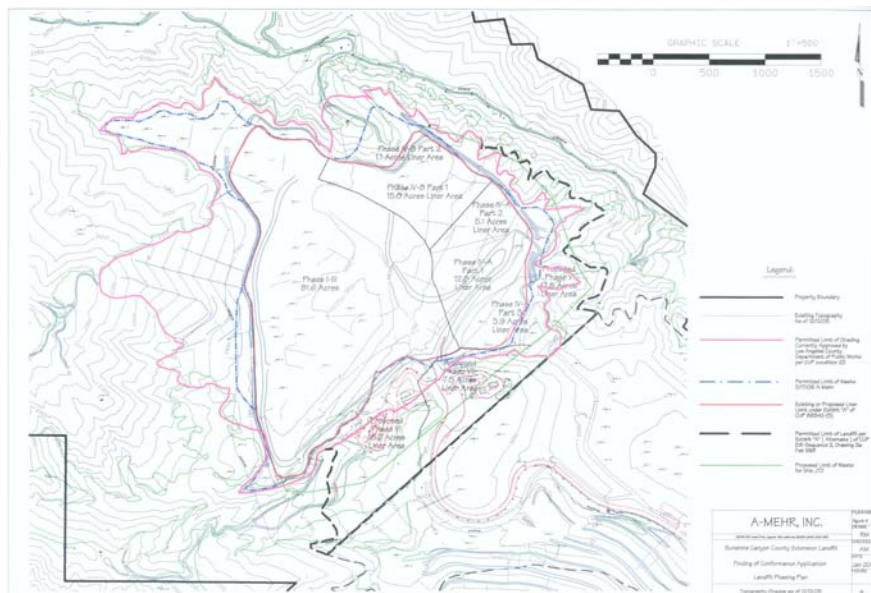
10

## Project Summary and Findings

- **Currently Permitted Daily/Weekly Capacity:**
    - 6,600 tons (max. 36,000 ton per week) of solid waste
  - **Proposed Daily/Weekly Capacity:**
    - 6,600 tons (max. 36,000 tons per week) of solid waste disposed
    - 3,600 tons per wk. for inert debris/beneficial use materials receivable
    - Total Receivable: 7,200 tons per day (39,600 tons per week)
  - **Permitted hours:**
    - 6 a.m. – 6 p.m. (M-S), closed Sunday
  - **Proposed hours:**
    - 6 a.m. – 6 p.m. (M-F), 7 a.m. – 2 p.m. (Sat.), closed Sunday
  - **2006 Disposal rate**
    - County-Side: 3,000 tons per day
    - City-Side: 4,200 tons per day
- 



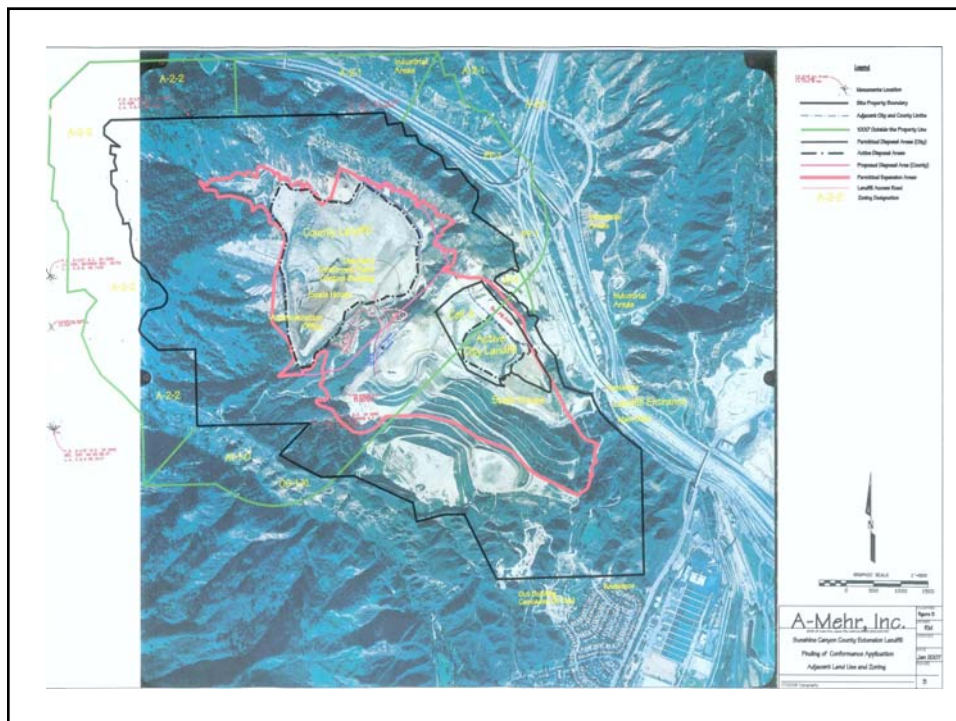
11



# Staff Analysis

- Compliance with the California Environmental Quality Act
- General Plan Consistency and Land Use
- Revised Solid Waste Facility Permit
  - CIWMB consideration February 13, 2007
- Waste Discharge Requirements
  - CRWQCB consideration April 5, 2007
- Consistency with Countywide Siting Element
  - Goals and Policies
  - Evaluation of Siting Criteria
    - Modifications to Item A to delete comment regarding the 500 foot setback

13





## Recommended Conditions of Approval

- Permitted Operations/Activities
- Types of Waste Materials
- Waste Quantities
  - Total waste received for disposal and inert debris/beneficial use materials shall not exceed 7,200 tons per day (39,600 tons per week)
- Hours of Operation
- Limits of Fill
- Term
- Regulatory Compliance



15

## Recommended Conditions of Approval

- Waste Load-Checking
- Litter Control
- Conversion Technologies
- Seismic Monitoring
- Waste Characterizations
- Reports
- Change in Ownership
- Mitigation Measures
- Subsurface Gas Migration



16

## Questions



17

## **ATTACHMENT II**

### **Sunshine Canyon Landfill (County Extension) Finding of Conformance Submittal Document**

You can access a copy of the Finding of Conformance Submittal Document at

[http://www.ladpw.org/epd/tf/Attachments/AgendaItems\\_Attachments/FOCSunshineCanyonLandfill-CountyExtension.pdf](http://www.ladpw.org/epd/tf/Attachments/AgendaItems_Attachments/FOCSunshineCanyonLandfill-CountyExtension.pdf)

[http://www.ladpw.org/epd/tf/Attachments/AgendaItems\\_Attachments/SiteLocationMap.pdf](http://www.ladpw.org/epd/tf/Attachments/AgendaItems_Attachments/SiteLocationMap.pdf)

[http://www.ladpw.org/epd/tf/Attachments/AgendaItems\\_Attachments/LandfillPhasingPlan1.pdf](http://www.ladpw.org/epd/tf/Attachments/AgendaItems_Attachments/LandfillPhasingPlan1.pdf)

[http://www.ladpw.org/epd/tf/Attachments/AgendaItems\\_Attachments/AttachmentB-1CUP.pdf](http://www.ladpw.org/epd/tf/Attachments/AgendaItems_Attachments/AttachmentB-1CUP.pdf)

[http://www.ladpw.org/epd/tf/Attachments/AgendaItems\\_Attachments/AttachmentB-2CUP.pdf](http://www.ladpw.org/epd/tf/Attachments/AgendaItems_Attachments/AttachmentB-2CUP.pdf)

[http://www.ladpw.org/epd/tf/Attachments/AgendaItems\\_Attachments/CEQANoticeOfDetermination.pdf](http://www.ladpw.org/epd/tf/Attachments/AgendaItems_Attachments/CEQANoticeOfDetermination.pdf)

[http://www.ladpw.org/epd/tf/Attachments/AgendaItems\\_Attachments/SitingCriteriaEvaluationChecklist.pdf](http://www.ladpw.org/epd/tf/Attachments/AgendaItems_Attachments/SitingCriteriaEvaluationChecklist.pdf)

[http://www.ladpw.org/epd/tf/Attachments/AgendaItems\\_Attachments/LitterControlandTarpingProgram.pdf](http://www.ladpw.org/epd/tf/Attachments/AgendaItems_Attachments/LitterControlandTarpingProgram.pdf)

[http://www.ladpw.org/epd/tf/Attachments/AgendaItems\\_Attachments/MonitoringandReporting.pdf](http://www.ladpw.org/epd/tf/Attachments/AgendaItems_Attachments/MonitoringandReporting.pdf)

[http://www.ladpw.org/epd/tf/Attachments/AgendaItems\\_Attachments/SWIMSform13.pdf](http://www.ladpw.org/epd/tf/Attachments/AgendaItems_Attachments/SWIMSform13.pdf)

A hard copy is available by contacting Chuk Agu at (626) 458-3556.