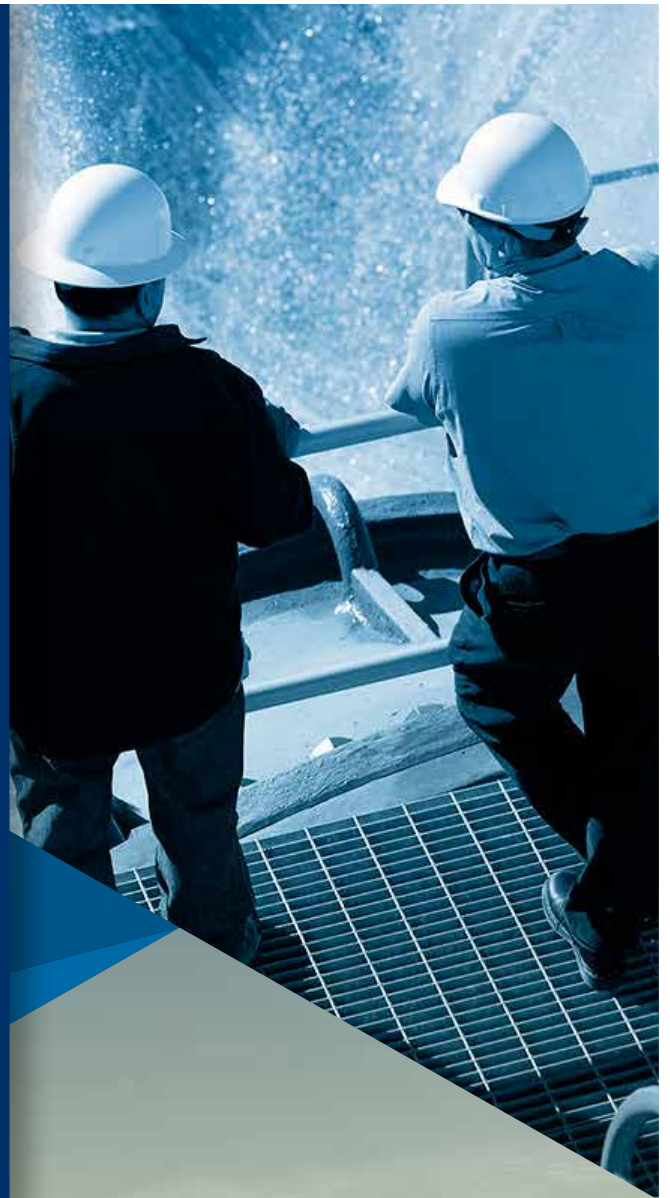


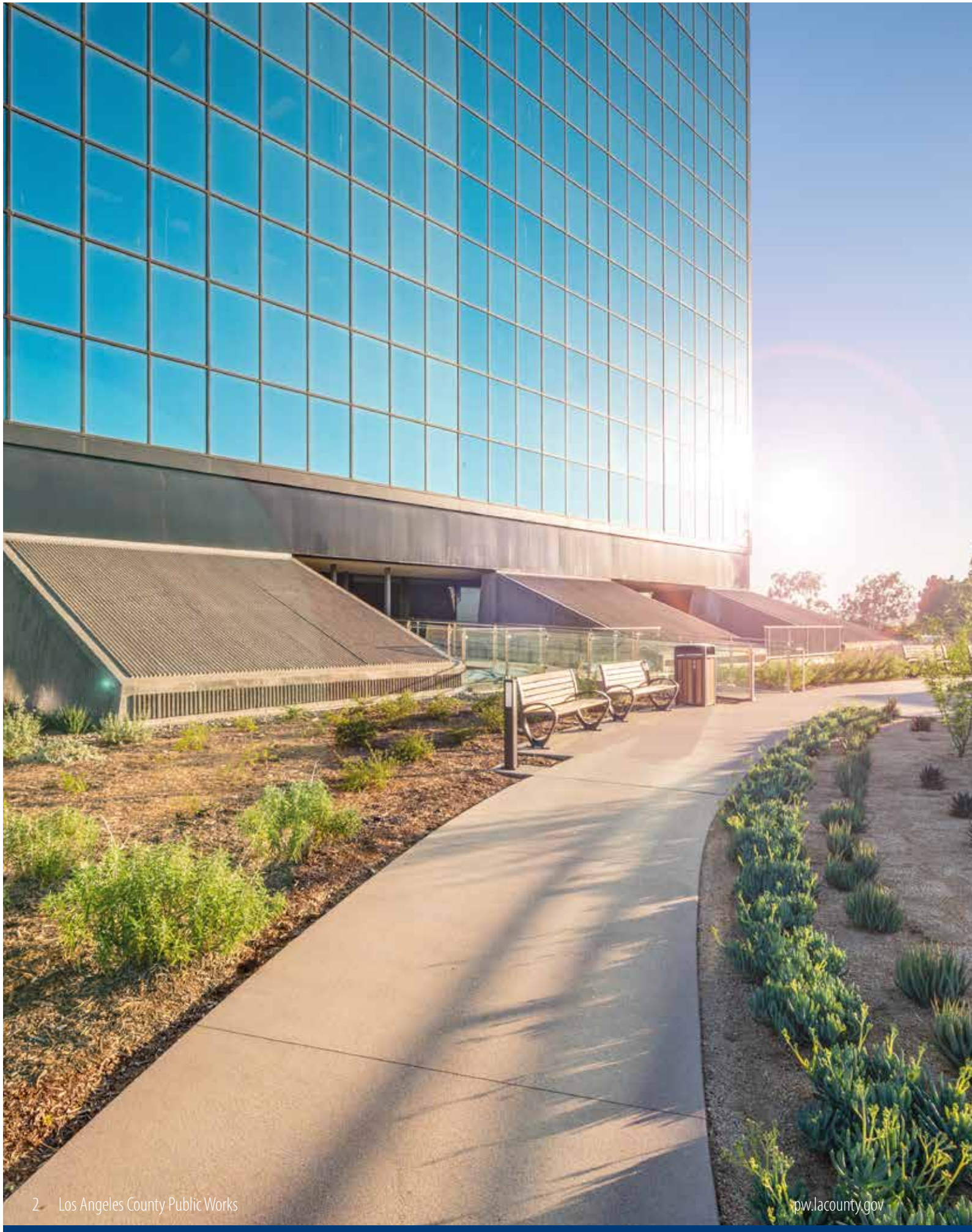


Public Works
LOS ANGELES COUNTY

QUARTERLY BUSINESS
REPORT

Q1/2024-2025





CONTENTS

Public Works Overview	4	Construction Management	56
Administrative Services	6	MAJOR PROGRAMS/SERVICES	57
MAJOR PROGRAMS/SERVICES	7	KEY ISSUES/CHALLENGES	59
KEY ISSUES/CHALLENGES	10	STRATEGIES	60
STRATEGIES	11	RESULTS-BASED ACCOUNTABILITY: SUMMARY	61
RESULTS-BASED ACCOUNTABILITY: SUMMARY	14	KEY TAKEAWAYS	62
KEY TAKEAWAYS	16	Public Contracting and Asset Management	64
Water Resources	18	MAJOR PROGRAMS/SERVICES	65
MAJOR PROGRAMS/SERVICES	19	KEY ISSUES/CHALLENGES	67
KEY ISSUES/CHALLENGES	23	STRATEGIES	67
STRATEGIES	24	RESULTS-BASED ACCOUNTABILITY: SUMMARY	69
RESULTS-BASED ACCOUNTABILITY: SUMMARY	28	KEY TAKEAWAYS	70
KEY TAKEAWAYS	31	Municipal Services	72
Transportation	32	MAJOR PROGRAMS/SERVICES	73
MAJOR PROGRAMS/SERVICES	33	KEY ISSUES/CHALLENGES	79
KEY ISSUES/CHALLENGES	35	STRATEGIES	80
STRATEGIES	35	RESULTS-BASED ACCOUNTABILITY: SUMMARY	82
RESULTS-BASED ACCOUNTABILITY: SUMMARY	39	KEY TAKEAWAYS	83
KEY TAKEAWAYS	40	Appendix 1 – Services Provided to Cities	87
Environmental Services	42	Appendix 2 – Public Works’ Priority Legislation	95
MAJOR PROGRAMS/SERVICES	43		
KEY ISSUES/CHALLENGES	46		
STRATEGIES	47		
RESULTS-BASED ACCOUNTABILITY: SUMMARY	51		
KEY TAKEAWAYS	54		

Public Works Overview

“To become the most trusted public agency in the region.”

“We plan, design, build, and maintain modern infrastructure that uplifts all communities of Los Angeles County.”



Director
Mark Pestrella, PE

Los Angeles County Public Works was formed in January 1985, consolidating the former County Road Department, the County Engineer Department, and the County Flood Control District.

With a Vision to become the most trusted public agency in the region, Public Works has been defined by its responsiveness to the public, commitment to provide excellent customer service, and drive to build great community relations. Public Works' workforce takes pride in being public servants providing essential and critical services for all residents and businesses in Los Angeles County.

Public Works' diverse operations are defined within five core service areas: Water Resources, Transportation, Environmental Services, Construction Management, and Municipal Services. Its annual budget of approximately 4.1 billion is funded by restricted revenues, such as gas excise and sales tax, benefit assessment, water and sewer sales, user fees, and contract cities revenues.

Public Works is strategically focused on supporting economic development through business-friendly contracting opportunities that will better serve the County's small businesses and local worker hiring objectives. In Fiscal Year 2023-24, Public Works awarded approximately \$1 billion worth of contracts within Los Angeles County, which helped create 13,053 jobs.

Public Works' workforce is comprised of approximately 3,660 employees in nearly 500 job classifications, including professional, technical, clerical, and skilled crafts.

Headquartered at 900 South Fremont Avenue in Alhambra, Public Works has 156 field facilities throughout Los Angeles County.

This business report highlights Public Works' high-level efforts in advancing its outcomes for the previous quarter. By acting on the strategies of each Business Area, Public Works aims to improve the quality of life for all Los Angeles County residents.

Public Works Executive Team



Angela R. George-Moody
Chief Deputy Director
 (626) 458-4003
 agmoody@pw.lacounty.gov



Art Vander Vis
Assistant Director
 (626) 458-4015
 avander@pw.lacounty.gov



Miki Esposito
Assistant Director
 (626) 458-4019
 mesposito@pw.lacounty.gov



Luis Ramirez
Deputy Director
 Public Contracting &
 Asset Management



Vincent Yu
Deputy Director
 Construction Management



Vacant
Deputy Director
 Municipal Services



Cid Tesoro
Deputy Director
 Environmental Services



Steve Burger
Deputy Director
 Transportation



Adam Arika
Deputy Director
 Water Resources



Jeff Howard
Administrative Deputy
 Administrative Services

NAME	TITLE	PHONE	EMAIL
Angela R. George-Moody	Chief Deputy Director	626.458.4003	agmoody@pw.lacounty.gov
Art Vander Vis	Assistant Director	626.458.4015	avander@pw.lacounty.gov
Miki Esposito	Assistant Director	626.458.4019	mesposito@pw.lacounty.gov
Luis Ramirez	Deputy Director, Public Contracting & Asset Management	626.458.4008	luramire@pw.lacounty.gov
Vincent Yu	Deputy Director, Construction Management	626.458.4010	vyu@pw.lacounty.gov
Vacant	Deputy Director, Municipal Services		
Cid Tesoro	Deputy Director, Environmental Services	626.458.4016	ctesoro@pw.lacounty.gov
Steve Burger	Deputy Director, Transportation	626.458.4018	sburger@pw.lacounty.gov
Adam Arika	Deputy Director, Water Resources	626.458.4012	aariki@pw.lacounty.gov
Jeff Howard	Administrative Deputy, Administrative Services	626.458.4006	jhoward@pw.lacounty.gov

Administrative Services

"Public Works is the Employer of Choice in Los Angeles County."



Public Works' recruiters attend college recruitment events

Support a workforce of **3,660** employees
in more than 500 job classifications



MAJOR PROGRAMS/SERVICES

Public Works' Administrative Services Branch (Branch) provides enterprise-wide financial management, administrative services, human resources, information technology, and risk management. Services include:

- Fiscal oversight
- Budget/fund management
- Litigation management
- Recruitment and exams administration
- Employee relations and programs
- Payroll administration
- Performance management
- Employee benefits
- Employee recognition programs
- Procurement and warehousing
- Employee training and professional development
- Compliance oversight for legally mandated programs
- Employee health and safety

Manage a
\$4.1 billion
budget for Fiscal Year
2024-2025



The Branch is committed to supporting a culture of world-class public service by investing in our employees, building workforce expertise, creating permanent jobs, investing in training and technology, and promoting a diverse, inclusive, and supportive work environment for everyone.

We aim to align our workforce with Public Works' mission to uplift the well-being of all communities of Los Angeles County (County) by recruiting, retaining, and developing a highly talented workforce to support our strategic priorities and operations

We support the County's efforts to increase the number of families earning a living wage in the County by providing job opportunities to disadvantaged populations.

We support the County's Anti-Racism, Diversity, and Inclusion (ARDI) Initiative through an equity infused strategic plan and tools designed to address systemic racism.

Cybersecurity Threats Prevented in FY 2024-25:

1K
Spam/Phishing

125k
Web-Based Attacks

Fiscal Year 2024-2025



3,753

Purchase Orders Processed
Totaling

\$38 million

Awarded Certificate of Achievement for
Excellence in Financial Reporting



For Los Angeles County Flood Control
District's Annual Comprehensive
Financial Report

661 Local Small Business Enterprise
(LSBE) payments for a total of

\$9.4 million

86% of LSBE payments
made within 15 days

PROGRAMS/INITIATIVES

EMPLOYEE ENGAGEMENT:

- Employee Recognition ceremonies
- New Employee Orientations
- New Managers Meetings
- Charitable Giving Campaign
- Wellness Events – Flu Clinic, Blood Drive
- Engineering Assistants Forum
- Leadership Forums
- Safety Awards ceremonies

College Recruitment

Public Works conducts on campus recruitment at multiple accredited colleges and universities to attract qualified and diverse talent.

PLACE Program

Public Works has partnered with the Worker Education and Resource Center (WERC) and the County Department of Human Resources to hire individuals with high barriers to employment through the Preparing Los Angeles for County Employment (PLACE) program.

Work From Home (Telework)

Public Works' Work From Home (WFH) program is designed to provide work flexibility while continuing to

deliver the highest level of service to our customers. Our WFH program follows four critical tenets:

- Collaborative Culture – promote a culture of collaboration and integration of skills, knowledge, and values to meet our mission and build the public's trust in us.
- Public Service – create an outstanding and unmatched customer experience in our industry.
- Productivity – increase employees' productivity to support population outcomes and strategies.
- Workforce Wellbeing – support a better work-life balance for our employees.

Training

Public Works is committed to developing and retaining a highly skilled workforce prepared to address modern infrastructure needs. We support employees in furthering their education through degree and certification programs, as well as tuition reimbursement assistance. Our employees attend external training, conferences, and seminars that further enhance their learning opportunities and enable networking with industry leaders.

\$390,000 Invested in employee training and development to date in Fiscal Year 2024-25



Employee Health and Safety hosted the 34th Annual Public Works Safety Awards ceremonies

KEY ISSUES/CHALLENGES

- **Strategic Issues**

- Due to employee turnover resulting from retirements and interdepartmental promotions, Public Works must prepare for current and future labor market demands by developing and retaining a diverse, sustainable, and highly skilled workforce with a specific focus on trends in the engineering industry.
- Public Works must continue to develop our leaders to put them in the best position to respond to workplace challenges and prepare employees for new leadership roles and challenges.
- Public Works supports the Board of Supervisors' commitment to expanding employment opportunities for County residents through workforce development programs which focus on creating pathways to County employment for disadvantaged populations.

- **Challenges**

- Baby boomer retirements have resulted in a significant loss of institutional knowledge.
- We need to be appropriately resourced with positions to fulfill high workload demands in key strategic areas.
- We must onboard talent more quickly and provide a more sustainable work-life balance for our employees.
- Some competing employers may offer more liberal telework schedules.

STRATEGIES

The Branch established two strategies designed to help ensure we are the Employer of Choice in the County:

Strategy 1 – Recruit and retain a highly talented workforce.

Public Works engages in targeted outreach and recruitment efforts to attract a diverse candidate pool and hire the most qualified candidates, with an emphasis on engineering talent to support the Business Areas’ strategic priorities and operations.

- Some high-level actions involved:
 - Participation in outreach events, career and job fairs, and campus recruitment at college and universities.
 - Implementation of efficiency enhancements to reduce the time between electronic Personnel Action Request (ePAR) approval and the establishment of the start date to onboard talent more quickly.
 - Tracking employees hired with specialized degrees, licenses, and certifications.

Strategy 2 – Train and promote professional workforce development.

Public Works promotes professional development opportunities to support its workforce. This strategy has a strong positive impact on job satisfaction, retention, and belonging as employees feel supported and engaged in their roles.

- Some high-level actions involved:
 - Expanding leadership training for managers.
 - Creating a baseline (reference point) of our workforce’s expertise by documenting employees who possess specialized degrees, licenses, and certifications.
 - Developing an automated tool to track compliance with County-mandated training.



Essential Leadership Skills Workshop graduates

STRATEGIES STATUS (FIRST QUARTER: JULY–SEPTEMBER 2024)

Strategy 1: Recruit and retain a highly talented workforce

1. Recruitment and outreach – Participated in 9 job fairs, including one local community recruitment event. As part of Public Works’ Diversity, Equity, and Inclusion (DEI) recruitment strategy, we participated in 2 Historically Black Colleges and Universities (HBCU) career fairs, and a DEI Multicultural Fair at the University of Southern California. Additionally, we are proactively recruiting talent from underrepresented areas and groups within the Long Beach-East Los Angeles Corridor Mobility Investment Plan region, bringing jobs to the targeted area.
2. New hires – Out of 114 survey responses received, approximately 77.1 percent of new hires reported that they possess degrees, licenses, and/or certificates. This indicator reflected a 29 percent increase over the prior quarter.
3. Onboarding – The median number of onboarding days (from ePAR approval to establishment of start date) went down from 37 calendar days to 20 calendar days. The 45.9 percent reduction in onboarding days over the prior quarter was the result of streamlining procedures for ePAR processing and fewer ePARs requiring medical examinations this quarter.
4. PLACE - We continue working with WERC/PLACE on new pipeline programs for people experiencing barriers to employment. This quarter, we opened a new cohort for Intermediate Typist Clerk/PLACE program. Interviews will begin in the second quarter to fill 10 positions.
5. Telework – With approximately 49 percent of employees teleworking one or more days per week, our Work From Home program continues to offer flexibility and support work-life balance for the workforce.

Strategy 2: Train and promote professional workforce development

1. Workforce development – Invested over \$390,000 in professional development and safety training to support the workforce. This quarter, 18 managers participated in a 3-day Essential Leadership Skills Workshop, raising the overall percentage of PW managers that completed leadership training to 89 percent. We are developing a statement of work to solicit vendors to provide additional leadership training services.
2. Wellbeing and inclusion - In celebration of National Lactation Awareness Month, Public Works inaugurated a dedicated Mothers' Room in the Annex building. Now, there are five dedicated lactation rooms at Headquarters, ensuring that employees have the space, time, and resources needed in the workplace to support lactation needs.
3. Wellness - Hosted a Wellness Fair/Flu Clinic event with over 400 employees participating.
4. Safety - Conducted three Safety Awards ceremonies at Hansen, Alcazar and Imperial yards. The ceremonies recognized 145 employees who had outstanding safety records and a continuous history of safe driving and no lost-time injuries.



RESULTS-BASED ACCOUNTABILITY: SUMMARY

Population Accountability

Population Outcome: Public Works is the Employer of Choice in Los Angeles County				
Population Indicators	Current Value	Current Reporting Period	Previous Value	Previous Reporting Period
Employee annual retention rate	92.7%	September 30, 2023 to September 30, 2024	93.4%	September 30, 2022 to September 30, 2023
Percentage of job offers accepted	96.1%	July to September 2024	93.6%	April to June 2024
Demographics of workforce that reflects Los Angeles County communities	See Chart on Page 16	September 2024	--	--

Performance Accountability

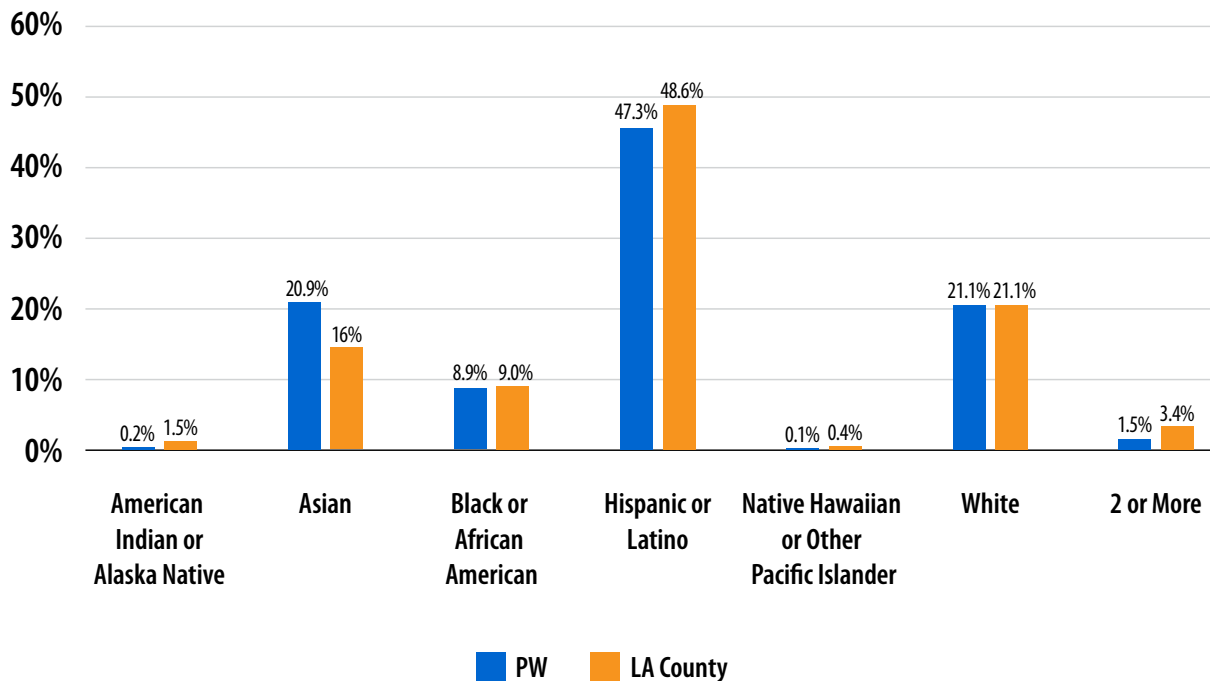
Strategy 1: Recruit and retain a highly talented workforce					
Performance Measures (July - September 2024)	Current Value	Previous Value	Current Target Value	Current Trend	Baseline % Change
Employee turnover rate	1.2%	1.1%	1.6%	↑	9%
Median number of days from ePAR approval to establishment of start date for more timely onboarding	20 calendar days	37 calendar days	25 calendar days	↓	-45.9%
Percentage of employees hired with specialized degrees, licenses, and certifications (e.g., surveyor, structural engineering, geotechnical engineering, project management, construction inspectors)	71.1%	55.1%	100%	↑	29%

Strategy 2: Train and promote professional workforce development					
Performance Measures (July–September 2024)	Current Value	Previous Value	Current Target Value	Current Trend	Baseline % Change
Employee compliance rate with County mandated training	96%	95%	100%	↑	1%
Percent of managers that completed leadership training	89%	87.6%	100%	↑	1.6%

KEY TAKEAWAYS

- Public Works is the County's employer of choice. In the current 12-month period (September 2023 to September 2024), our annual employee retention rate was 92.7 percent, a 0.75 percent decrease as compared to the prior 12-month period. U.S. employers strive to achieve 90 percent employee retention.
- Employee turnover went up by approximately 9 percent, from 1.1 percent in the prior quarter to 1.2 percent this quarter. The increase was mainly driven by a higher number of employees transferring to other departments and leaving for non-County jobs. With an average of 0.4 percent of employees leaving employment each month, Public Works is well below the national turnover rate for governmental employees, which averaged 1.6 percent per month.
- Job offers acceptance increased by approximately 2.7 percent as compared to the prior quarter. With a 96.1 percent job offers acceptance rate, Public Works continues to be a highly desirable employer.
- The overall Public Works workforce is closely representative of the diverse demographics of Los Angeles County population. We continue our commitment and efforts to expanding the pool of candidates and advance equitable outcomes for all people.

Public Works Employees vs. Los Angeles County Population As of September 2024



County population data source: [U.S. Census Bureau Los Angeles County population estimates](https://www.census.gov/data/tables/2019/total/2019-county-population-estimates.html)



Water Resources

"All Los Angeles County residents have access to safe, clean, and reliable water resources."



Ladera Park

14
dams

Providing flood protection for
10 million people
and contributing to their water supply



MAJOR PROGRAMS/SERVICES

Through the Los Angeles County Flood Control, Unincorporated Area stormwater program, and Waterworks Districts, Public Works is responsible for Countywide water resource management, which includes flood risk management, water supply, and watershed health.

Flood Risk Management and Stormwater Capture

The Los Angeles County Flood Control District (Flood Control District) was established under the Los Angeles County Flood Control Act in 1915. The Act empowered the Flood Control District to provide flood protection, water conservation, recreation and aesthetic enhancement within its boundaries. The Flood Control District is governed, as a separate entity, by the County of Los Angeles Board of Supervisors.

On behalf of the Flood Control District, Public Works constructs, operates, and maintains a regional system of flood control and water conservation facilities that provide flood protection and increase local water supply. The annual average budget of the Flood Control District is \$370 million, with major funding from property taxes and a property benefit assessment for flood control.

The Flood Control District's boundaries encompass 2,758 square miles. The Flood Control District operates and maintains one of the most complex systems of flood control and water conservation in the country. The Flood Control District's current infrastructure includes 14 major dams and reservoirs, 491 miles of concrete and soft-bottom channels, 3,400 miles of underground storm drain conduits, 97,466 catch basins, 61 pump stations, 189 debris basins, 181 crib dams, 37 sediment placement sites, 27 spreading grounds, 21 low-flow diversion structures, 315 seawater barrier injection wells, 1 constructed wetland, and 1 mitigation bank area.

The reservoirs assist in recharging groundwater, which helps Los Angeles retain a supply of drinking water. Water from the reservoirs is released, as needed, and moves through a system of open channels into spreading grounds, where it replenishes groundwater basins by slowly percolating, or infiltrating, into the ground. The groundwater basins are accessed by wells, providing a valuable and reliable source of local drinking water. By conserving water in reservoirs, Los Angeles County relies less on imported water from other areas of California and Colorado River Aqueduct. The flood control system ensures that the greatest amount of water is captured in

reservoirs and diverted into spreading grounds instead of being lost to the ocean.

The Flood Control District also administers the Safe Clean Water Program, which provides local, dedicated funding to increase our local water supply, improve water quality, and protect public health. Multi-benefit projects capture stormwater to supplement local water supply through reuse, potable offset, and/or groundwater recharge.

Local groundwater provides one-third of the region's water supply. The Flood Control District's spreading operations significantly help to recharge these local groundwater aquifers and are supplemented by numerous other regional entities doing both regional and distributed stormwater capture projects through the Safe Clean Water Program.

The Flood Risk Management Program includes planning; operation; maintenance; emergency storm response; storm drain rehabilitation; debris protection; floodplain management; public service; and construction of storm protection facilities, such as dams, channels, debris basins, storm drains, pumps, and removal of accumulated debris from reservoirs, debris basins, and debris retaining inlets.

The seawater barrier injection wells along Los Angeles County's coastline often go unnoticed because of their underground nature. However, these facilities serve as Los Angeles basin's fresh water sentinels. They protect a significant portion of the area's drinking water supply from ocean water, which constantly attempts to migrate into existing aquifers. Treated imported and reclaimed water is injected deep into the underground aquifers to block this inland migration of saltwater.

Another vital component of the Flood Risk Management Program is the removal of accumulated debris from the numerous reservoirs and debris basins, which protect nearby communities. Debris removal from the reservoirs also restores capacity, which the region needs for stormwater conservation.

Integrated Regional Water Management Program (IRWMP)

Public Works leads the Greater Los Angeles County IRWMP, the largest regional water management group in the State involving 30 regional water management agencies.

The IRWMP planning process successfully brings together and prioritizes water-related efforts in the region in a systematic way to ensure sustainable water uses, reliable water supplies, better water quality, environmental stewardship, efficient urban development, protection of agriculture, and a strong economy. Through IRWMP, Public Works partners with regional water stakeholders and agencies to implement regional solutions through open and collaborative stakeholder processes to promote sustainable water use in the Los Angeles region.

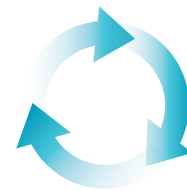
Since its inception in 2008, Greater LA County IRWMP has successfully secured more than \$165 million in water resource grants for 103 projects.

260,000

residents have access to recreation opportunities at Flood Control District facilities within one mile of their homes

Over the last 10 years, Public Works:

- **Increased the stormwater recharge capacity** at its facilities by approximately 17,680 acre-feet per year.
- **Invested more than \$193 million** in rehabilitating its dams and increasing their operational efficiency.
- **Invested more than \$58 million** in enhancing the capacity and operational efficiency of its spreading grounds and seawater barriers.

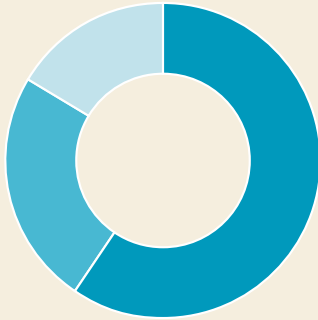


Public Works recharges enough groundwater from various sources annually to serve **2.48 million residents**

270,000

water customers served in
Marina del Rey, Malibu,
Val Verde, Acton, Kagel Canyon,
Antelope Valley

Average Annual Contribution to Regional Water Supply



200,000 acre-feet
Stormwater

65,000 acre-feet
Imported water

45,000 acre-feet
Recycled water

Water Utilities

Public Works also provides retail water service to over 270,000 residents through the management of five County Waterworks Districts, the Marina del Rey water system (SD2), and the Rancho Los Amigos Water System (SD2). The systems are comprised of 1,346 miles of water mains, 122 storage tanks, and 145 pump stations and includes the following five District areas:

- Malibu (SD3)
- Val Verde (SD5)
- Acton (SD5)
- Kagel Canyon (SD5)
- Antelope Valley (SD5)

The Los Angeles County Waterworks Districts operates out of three District offices (Alhambra, Malibu, and Lancaster) and maintains an online water account management system (MyWAM) for customers to easily access and manage their account online, anytime, anywhere and offers a “Live Chat” feature to enhance the customer service experience.

County Waterworks Districts also manages a robust water efficiency program to increase water conservation and reduce daily per capita water usage. The program includes:

- Residential Rebate Program
- Cash for Grass Program/Grass Replacement
- Online guides for Xeriscape Education
- Education and outreach programs
- Water Surveys and Audits for leak detection
- Cell phone application to report Water Waste
- Quarterly Newsletters and webinars
- Website Updates

The annual budget for these Waterworks Districts and the Marina del Rey water system is \$255 million.

The Waterworks Districts are investing in extensive capital improvement programs with over \$250 million of planned projects including water tanks, water mains, valves, pumps, and wells over the next 20 years. Additionally, the Waterworks Districts has initiated a comprehensive asset management program to assess infrastructure and prioritize repairs and upgrades.



Watershed Health Program

Public Works is responsible for planning and implementing projects and programs to improve surface water quality in unincorporated County areas and is the lead Agency for the Los Angeles County Municipal Stormwater (MS4) Permit issued by the Regional Water Quality Control Board to the County of Los Angeles (unincorporated areas) and to the Los Angeles County Flood Control District (jurisdictional areas).

The MS4 Permit adopted in 2021 includes the County, Flood Control District, and 85 municipalities in Los Angeles County. The 2021 MS4 Permit also includes 10 cities within Ventura County and the Ventura County Watershed Protection District as permittees. The Permit requires permittees to collectively control pollutant discharges into the municipal stormwater system and to meet Total Maximum Daily Loads requirements. The permit requires a regional collaboration, and Public Works is participating in 18 Watershed groups that were formed to complete watershed management plans to collectively develop and implement projects/programs to meet MS4 permit requirements and identify opportunities for water quality projects that will also increase stormwater reuse and augment local water supply. These watershed groups have developed detailed plans approved by the Los Angeles Regional Water Quality Control Board.

To date, the County has invested over \$459 million Countywide towards the construction of stormwater quality improvement projects (\$383 million through the Safe Clean Water Program, and \$187 million through the unincorporated County's stormwater program).

Over the last year, **21 low-flow diversions** have prevented around **182 million gallons** (equivalent to 5 million bathtubs) of polluted urban runoff from entering local waterways

KEY ISSUES/CHALLENGES

- **Climate Change**
 - Our region is subject to extreme weather which includes extended periods of drought with few, intense rain events.
 - Climate change is expected to reduce the reliability of imported water delivered to Los Angeles County. This will require an increased emphasis on development of local sources of water to increase the sustainability of our water supply.
- **Improving Water Body Health**
 - Federal and State regulations establish water quality standards to protect the beneficial uses of water bodies, which include aquatic habitat and recreation. New regulations continue to be developed.
 - Water bodies within Los Angeles County (rivers, lakes, and the ocean) are impaired by various pollutants, which negatively impact aquatic habitat and recreation. Stormwater, urban runoff, and other discharges are a source of these pollutants.
 - Many of these rivers and lakes are part of the urban flood control infrastructure belonging to the Flood Control District, such as the Los Angeles River, Verdugo Wash, and the Arroyo Seco Channel.
 - The unincorporated areas of the County and the Flood Control District (along with other cities in the County) are required to develop and implement programs to reduce pollutants entering water bodies. These programs are costly and existing funding is limited.
 - The cost to meet water-quality standards in Los Angeles County is estimated at \$20 billion dollars over the next 20 years. Most local agencies lack a reliable source of revenue to meet the long-term challenges.



San Gabriel Dam



Ballona Creek Interceptor Event

STRATEGIES

- **Improve Regional Water Supply Resiliency**
 - Improve regional water supply resiliency and sustainability through cultivation of strategic partnerships, coordination of integrated water management, implementation of the County Water Plan, and enabling significant increases in stormwater capture, use of recycled water, groundwater banking, and water use efficiency.
 - Develop roadmap for maximizing stormwater capture capacity and groundwater basin recharge.
 - Leverage and improve effectiveness of the Safe, Clean Water Program and create watershed plans.

- **Flood Risk Reduction/Climate Response**
 - Implement comprehensive assessment of water resources infrastructure and develop long-term plans for repair, replacement, and upgrade to optimize flood protection.
 - Develop a master asset management plan to assist in coordinating all operations and management activities and educating local communities.
 - Develop and execute an implementation roadmap to ensure fiscal health of Flood Control District funds.

- **County Waterworks Districts' Water Supply Resiliency**
 - Increase local supply resiliency and water supply reliability.
 - Ensure reliable service to our customers through proactive asset management, water supply risk management, and investments in making our infrastructure more resilient.
 - Serve our customers and staff by providing programs, projects, and services in a fair and equitable way.
 - Ensure sustainable funding for all Waterworks Districts and ensure efficient investments in capital assets, operations, and services.

- **Maintain Beneficial Uses of Los Angeles' Waterbodies**
 - Prevent pollution such as trash, bacteria, and toxic metals from entering our rivers, lakes, and the ocean.
 - Educate the public on proper environmental stewardship practices.
 - Implement multi-benefit stormwater capture projects on a regional scale.

STRATEGIES STATUS (FIRST QUARTER: JULY–SEPTEMBER 2024)

Strategy: Improve Regional Water Supply Resiliency

1. Public Works continues to lead and coordinate efforts to establish a sustainable and equitable regional water supply through integrated water management as demonstrated by the following accomplishments:
 - The Los Angeles County Water Plan (CWP) hosted kickoff meetings in August and September for the four Task Forces that were launched at the Water Resiliency Summit. There were more than 100 attendees from various water partners across the region that attended the Water Use Efficiency & Communication, Regional Water Reliability, Small, At-Risk Water Systems, and Nature-Based Solutions (NbS) Task Forces. Working Groups for each Task Force, and a Blue Ribbon Panel for NbS, were established and began meeting to start progress on the CWP 2-Year Action Plan towards regional water supply resiliency.
2. Public Works continues to lead the Safe, Clean Water (SCW) Program administration. The SCW Program provides local, dedicated funding to increase water supply, improve water quality, enhance communities, and protect public health in Los Angeles County. Accomplishments include:
 - In July, SCW Program launched the Watershed Planning effort which will develop Initial Watershed Area Plans. These plans aim to identify areas with the most promising opportunities for impactful water quality, water supply, and community-enhancing multi-benefit projects.
 - On July 10 and August 14, 2024, the ROC reviewed each Stormwater Investment Plan (SIP) and recommended that all nine be approved. The nine recommended SIPs, in aggregate, comprise the proposed Regional Program budget for FY 2024–25 of \$147,520,876.20. The recommended SIPs help achieve SCW Program goals through meaningful water supply increases, water quality improvements, and community enhancements that all support public health. Additionally, the recommended SIPs prioritize projects that invest in Disadvantaged Communities, utilize Nature-Based Solutions, and advance compliance with existing water quality regulations.
 - On September 24, the SCW Program officially launched its first ever Public Education & Community Engagement Grants Program (Grants Program). The development and administration of this Grants Program was approved by the Board in 2023 and – after multiple public input sessions – this highly anticipated element of the SCW Program is now live. The Grants Program supports public education and community engagement efforts related to stormwater and urban runoff capture within the LA County Flood Control District. In partnership with the Water Foundation, LA County Flood Control District developed the Grants Program to advance the goals of the SCW Program and aims to improve water quality, increase local water supply, and provide community investment benefits. There is \$8.5M in available grant funding and applications are being accepted now through May 31, 2025. The Water Foundation will evaluate proposals and award grants in periodic batches. Grant funds must be used by July 31, 2026.
3. Public Works continues to lead the internal County Working Group (Group) to develop and implement each annual expenditure plan and carry out MS4 Permit activities. Investment of Municipal Program (local return) funds from the SCW Program’s Regional Programs funds continue to be used to design and develop new multi-benefit projects.

Strategy: Flood Risk Reduction/Climate Response

1. Public Works continues to restore flood protection and water storage capacity in its reservoirs:
 - Continuing post-Bobcat Fire emergency projects at the Cogswell Reservoir to remove 2,000,000 cubic yards (cy) of sediment and the San Gabriel Reservoir to remove 4,900,000 cy. The project at the Cogswell Reservoir began in April 2021 and has removed 1,565,000 cy at a cost of \$139.7 million. The project at the San Gabriel Reservoir began in June 2021 and has removed over 1,350,000 cy of sediment at a cost of \$163.9 million. Both projects have resumed construction for 2024.
 - Continuing the Santa Anita Reservoir Post Fire Emergency Restoration Project to remove up to 600,000 cy of post-Bobcat Fire sediment from the reservoir. Construction started in March 2023 and has removed 165,000 cubic yard of sediment. Construction resumed in April 2024 and is anticipated to be completed by December

2024 for a cost of \$53.8 million.

2. Public Works continues to improve flood risk management at the dams by proactively rehabilitating and modernizing the dam's inlet/outlet works and other ancillary features. These efforts will maximize our facilities' useful service life and meet current and future operational and maintenance needs.
 - In December 2023, construction started on the Morris Dam Access Road and San Gabriel Dam Outlet Channel Rehabilitation Project to construct access improvements and other essential maintenance repairs for safe and reliable access at Morris Dam and reconstruct the outlet channel invert at San Gabriel Dam for resilient flood control operations. Reconstruction of the Morris Dam drainage gallery walkways was completed last quarter. The project construction is expected to be completed by December 2024 for a cost of \$4.2 million.
 - In June 2024, construction started on the Cogswell Dam Inlet – Outlet Project Phase 2 to rehabilitate three outlets and one sluice gate to extend their service life and ensure continued operation of the dam. The project is expected to be completed by April 2025 for a cost of \$7.5 million.
3. Public Works continues to update flood risk messaging for County unincorporated areas under the National Flood Insurance Program's (NFIP) Community Rating System (CRC). Public Works has maintained the County's NFIP CRC Class 6 status, which offers a 20 percent discount on unincorporated area residents' flood insurance premiums. During this quarter, Public Works accomplished the following:
 - Continued updating the County's Comprehensive Floodplain Management Plan/Program for Public Information/Repetitive Loss Area Analysis for unincorporated areas. Public Works established for the update a Steering Committee consisting of individuals from government and non-government entities, including the California Department of Water Resources, California State University-Los Angeles, City of Los Angeles, Los Angeles County Fire Department and Department of Regional Planning, Altadena Town Council, American Red Cross, and private citizens.
4. Online education efforts to increase community flood risk awareness are ongoing through the Water for LA website (<https://waterforla.lacounty.gov/>) and social media.
5. Public Works continues to manage Flood Control District funds and make progress towards fiscal health milestones. In August 2024, a 20-year financial assessment of Flood Control District funds was completed detailing projected revenues, and operation and maintenance and capital improvement project expenditures. The assessment provides recommendations for further evaluation and action to define Flood Control District 20-year priorities, create operational efficiencies, and pursue supplemental funding strategies.

Strategy: County Waterworks Districts' Water Supply Resiliency

1. Public Works continues to Increase the resilience of water supplies through continued partnerships with water agencies and identification of new water sources, reducing reliance on imported water.
2. Public Works continues to implement its Asset Management Program for all Waterworks Districts, which utilizes a Geographic Information System (GIS) to track and map infrastructure (including information on the age, type of materials, condition of infrastructure, etc.) to best manage the infrastructure to its full useful life and help inform the development of Capital Improvement Programs (CIPs) for each District.
3. Public Works continues implementation of its public education and outreach campaigns on water conservation and on reducing water waste, in addition to rebate and incentive programs.
4. Public Works continues to monitor the financial health in each Waterworks District to determine if the current rate structure supports recommended maintenance and operations of Waterworks infrastructure as well as supports implementation of CIPs. Based on an in-depth analysis conducted on the Waterworks Districts' financial health, it was concluded that additional revenues will need to be secured in order to continue normal operations of the various Districts. A Cost of Service Analysis and Rate Study have been initiated and are anticipated to be completed by early 2025.

Strategy: Maintain Beneficial Uses of Los Angeles' Waterbodies

1. Public Works continues to manage the Illicit Discharge Detection and Elimination Program. The Program, which includes the inspection of all storm drain systems and the review of flood permitted connections, aims to identify and eliminate flows that may contain pollutants from being discharged into the MS4 system and ultimately into beaches and the ocean.
2. Public Works continues to manage, operate, and maintain 19 out of 21 Low Flow Diversions aimed at diverting urban and stormwater runoff from storm drains and outfalls into nearby sewer systems, preventing pollution such as trash and bacteria from being discharged into beaches and the ocean. The two Low Flow Diversions that are currently offline (Marie Canyon and Parker Mesa) are scheduled for repair and/or upgrade and are expected to be operational by late 2025.
3. Public Works continues to implement regional, multi-benefit stormwater capture projects aimed at capturing the first flush stormwater and urban runoff for groundwater infiltration, for diversion to sewers for treatment, and/or for onsite treatment and re-use.
 - Adventure Park Multi-Benefit Stormwater Capture Project, located in the unincorporated community of South Whittier, is scheduled to be completed in spring 2025.
 - Monteith Park and View Park Green Alley Stormwater Improvements Project, located in the unincorporated community of View Park is scheduled to be completed in November 2024.
 - Alondra Park Multi-Benefit Stormwater Capture Project, located in the unincorporated community of El Camino Village, is scheduled to be completed in May 2026.

RESULTS-BASED ACCOUNTABILITY: SUMMARY

Population Accountability

Population Outcome: All Los Angeles County residents have access to safe, clean, and reliable water resources.				
Population Indicators	Current Value	Current Reporting Period	Previous Value	Previous Reporting Period
Percentage of Los Angeles County's annual water demand met through local water supplies	45%	Q1 Jul-Sep 2024	45%	Q4 Apr-Jun 2024
Number of potable water quality violations for all water agencies	69	Q1 Jul-Sep 2024	49	Q4 Apr-Jun 2024
Number of flood damage incidents and lives lost due to flooding	0 incidents 0 lives lost	Q1 Jul-Sep 2024	0 incidents 0 lives lost	Q4 Apr-Jun 2024
Number of health advisory warnings and closures for lakes, rivers, and beaches annually in Los Angeles County	62 warnings 2 closures*	Q1 Jul-Sep 2024	224 warnings 1 closure	Q4 Apr-Jun 2024

Performance Accountability

Strategy 1: Improve Regional Water Supply Resiliency					
Performance Measures (July – September 2024)	Current Actual Value	Previous Value	Current Target Value	Current Trend	Baseline % Change
Stormwater capture capacity at Flood Control District-operated facilities for groundwater recharge	108,069	108,074	120,000 AF	↓	0.004%
Increase in annual stormwater capture and recharge due to regional investments (acre feet per year)	2,550	N/A	300,000 ¹	N/A	N/A
Cumulative number of approved Safe, Clean Water Program projects and their tributary areas (cumulative total acres)	126 projects 265,000 acres	N/A	137 projects 275,000 acres ²	N/A	N/A

1. Current Target Value based on Board Motion goal of an additional 300,000 AFY of stormwater by 2045.

2. Current Target Value based on proposed FY2024-25 Stormwater Investment Plans from the Safe, Clean Water Program.

Strategy 2: Flood Risk Reduction/Climate Response

Performance Measures (July–September 2024)	Current Actual Value	Previous Value	Current Target Value	Current Trend	Baseline % Change
Amount of sediment removed from dams and debris basins (cubic yards)	1,428,569	1,933,946 ¹	1,700,000	↓	47.1%
Cumulative grant funds and/or partnership funds received by Flood Control District (per fiscal year)	\$0 ²	\$18.1M ²	\$10,000,000	↓	100%
Number of impressions received on Water for LA website	32,284	42,576	36,500	↓	24.2%
Percentage of the annual routine maintenance program completed	16% ³	N/A	100%	N/A	N/A

1. This number reflects the total sediment removed during the previous business year.

2. This is a cumulative total per fiscal year, and the Previous Value reset to zero on July 1

3. This is calculated cumulatively since the total number of maintenance routines vary throughout the year. This is a new measure so there is no Previous Value available yet.

Strategy 3: County Waterworks Districts' Water Supply Resiliency

Performance Measures (July – September 2024)	Current Actual Value	Previous Value	Current Target Value	Current Trend	Baseline % Change
Amount of supply added in Los Angeles County Waterworks District 40, Antelope Valley	26,300 AF/yr	N/A	29,050 AF/yr ¹	N/A	N/A
Linear feet of old deteriorating watermain replaced in high risk areas of the Waterworks Districts	8,500 ft	N/A	20,000	N/A	N/A
Number of District tank recoatings completed ²	1	N/A	5	N/A	N/A

1. Target based on 5-year horizon in order to achieve 80% local groundwater reliability by 2045

2. This new performance measure was added to better reflect the maintenance aspects of Waterworks

Strategy 4: Maintain Beneficial Uses of Los Angeles' waterbodies¹

Population Indicators (July – September 2024)	Current Actual Value	Previous Value	Current Target Value	Current Trend	Baseline % Change
Percentage of detected illicit discharges that are eliminated	100%	100%	100%	→	0%
Percentage of existing Low Flow Diversion (LFD) systems operating	90%	90%	100%	→	0%
Percentage of total target annual volume captured at completed multi-benefit projects (Target annual volume at each completed project = total BMP capacity multiplied by 10 85th percentile storm events)	6%	N/A	100%*	N/A	0%

* Current Target Value of 100% represents the cumulative annual total of Q1-Q4 values for any given FY. Previous value indicates N/A because this metric is new.

KEY TAKEAWAYS

Strategy 1

- During the 2023-24 Fiscal Year, approximately 500 AF (800,000 CY) of capacity was added to the reservoirs as a result of sediment removed during Q1 and Q4. 2024-25 Q1 removal numbers won't be reflected until the end of the construction season surveys are reported later this year. Sediment removal activities at Cogswell and Santa Anita reservoirs will be completed this year. Approximately 2.2 MCY was removed from Cogswell over 4 years and 450,000 CY were removed from Santa Anita over 2 years.
- There is a new CWP dashboard that will support the CWP's Regional Water Supply Reliability Task Force efforts.

Strategy 2

- We exceeded our sediment removal target in the 2023-24 Fiscal Year. The target for this year has been reduced to account for the completion of the Cogswell and Santa Anita Emergency Sediment Removal Projects. Therefore, the only project anticipated to be occurring in spring 2025 is San Gabriel Reservoir. San Gabriel typically isn't drawn down until late May/early June so little additional sediment is anticipated to be removed beyond that removed in Q1. Sediment removal activities are about to begin at Santa Anita Debris Dam where 60,000-70,000 CY will be removed by end of 2024.
- The Flood Control District is at a critical point in pursuing funding partners and all project managers are diligently exploring opportunities. The annual goal of \$10M is expected to be far surpassed by the Rory Shaw loan funds alone, once secured (anticipated in 2025).

Strategy 3

- The County Waterworks Districts continue to increase water supply reliability through various means including the enhancement of financial stability. In addition to leveraging capital funds through grants, the Waterworks Districts are recommending to the Board of Supervisors, in October, a "pass-through" rate increase beginning in January 2025 to cover the increasing costs of imported water and inflation.

Strategy 4

- Our Low Flow Diversions continue to protect our local waterbodies. Last month, there was a sewer overflow that originated in the City of Los Angeles sewer system. Because we operate a LFD downstream of the overflow location, we were able to intercept/capture the sewage discharge, which then resulted in lifting of the beach closure at Will Rogers State Beach.

Transportation

“Los Angeles County residents have access to state-of-the-art transportation infrastructure that is safe, resilient, sustainable, and equitable.”



8.9% of residents in Los Angeles County use alternate methods of mobility as their primary form of transportation to work.



MAJOR PROGRAMS/SERVICES

The Transportation Core Service Area (CSA) promotes Transportation Safety and Countywide multimodal transportation opportunities, managing over 3,300 centerline miles of County roads, transportation infrastructure, programs, and services including:

Vision Zero

In collaboration with Department of Public Health (Public Health) and with the support of other County departments, Public Works established an action plan to carry out the County's Vision Zero goal, an effort to eliminate traffic-related fatalities and severe injuries on unincorporated County roadways. This multifaceted initiative focuses on human mistakes and human vulnerability to guide infrastructure designs and other safety programs to continually strive toward zero traffic fatalities.

Community Traffic Safety

There is a need to consider each community's individual needs when it comes to safety. Rather than addressing safety issues and concerns on a case-by-case basis, Community Plans must be developed to ensure the infrastructure is optimized for safety within the context of the entire community and with the community's full input.

The work to develop these plans is extensive and will require additional resources. However, this will result in safer communities where residents feel empowered to use all modes of transportation to its fullest. Pilot plans are being developed and the lessons learned from those plans will be used to develop a path forward in achieving Community Safety Plans for all the County's diverse unincorporated communities.

Active Transportation & Healthy Communities

Public Health identified communities throughout the County with a need for improved health outcomes. In collaboration with other County departments, Public Works' Transportation CSA has a key role in helping to address this challenge through transportation programs and improvements that promote walking, bicycling, transit use, and safety. These active transportation programs increase the public's transportation choices, provide improved connections to transit hubs and destination centers, and improve health outcomes by promoting healthy lifestyles, reducing reliance on automobile travel, and reducing greenhouse gas emissions.

\$275+ Million spent annually on street and road operation, maintenance, and safety programs

Bicycles & Pedestrians

Public Works is responsible for the development and maintenance of the County's bikeway system and the implementation of the Los Angeles County Bicycle Master Plan adopted by the Board in 2012. The Master Plan is in the process of being updated to revise the list of bikeways to identify new potential bikeway locations and remove unsuitable locations; include design guidelines for all bikeway types on unincorporated roadways, including Class IV; and propose other bikeway infrastructure and improvements to support the County's goals related to transportation equity, safety, and sustainability.

The Agency is responsible for implementing transportation infrastructure in support of Step by Step Los Angeles County: Pedestrian plans for Unincorporated Communities. Improvements that support pedestrian activity such as high-visibility crosswalks, continuous sidewalks, and shade trees or structures are another component to promoting healthy communities.

Public Transit

Public Works provides transit service to over 3.3 million riders annually including fixed route and paratransit (dial-a-ride) services in unincorporated areas to meet the needs of community residents, providing access and intermodal transportation mobility and connectivity.

During the summer season, Public Works provides transportation to the Hollywood Bowl, Ford Theatre, and Santa Monica Beach. Other activities include the operation and maintenance of park-and-ride lots and bus stop amenities. Transit services are primarily financed with the County's share of the Proposition A Local Return Program from Proposition A (1980), a local sales tax measure.

Traffic Programs & Services

The County leads a multijurisdictional Traffic Signal Synchronization and Intelligent Transportation System effort, which has provided approximately \$275 million worth of improvements to nearly 70 agencies Countywide through Los Angeles County Metropolitan Transportation Authority's (Metro) Call for Projects biennial grant funding program. Future planned improvements are funded through Measure R Highway Subregional Program, the Measure M Multi-Year Subregional Program, and other local, State, and Federal grant funding.

Public Works also monitors and controls traffic signals Countywide from its state-of-the-art Traffic Management Center in Alhambra and manages additional traffic safety programs and services such as the following:

- County Lighting Maintenance Districts (Streetlights)
- Constituent requests regarding traffic safety, parking, and other traffic concerns
- Los Angeles County Highway Safety Commission
- Adult Crossing Guard Service for Elementary and Middle Schools

Road Infrastructure

Public Works manages the County Transportation Improvement Program for road improvement projects and annual operations and maintenance efforts, funded primarily from gas tax funds, Proposition C, Measure R, and Measure M Local Return funds, Senate Bill 1 (SB 1) Road Maintenance and Rehabilitation Account funds, and Federal, State and regional grant programs. Projects include traffic safety and operational improvements, pavement rehabilitation, roadway drainage, active transportation, street lighting, green street, and beautification projects.

Road maintenance and operations staff operate out of field facilities located throughout the County and provide comprehensive maintenance activities and emergency response, including pavement patching and resurfacing; litter and debris removal; sidewalk, curb, and gutter repair; guardrail maintenance; snow removal; street sweeping; median landscape maintenance: street lighting; vegetation control; bike path maintenance; tree trimming and planting; traffic signing and striping; pavement marking; and, traffic signal operations and maintenance.

Bridge Infrastructure

Public Works inspects and maintains 315 County-owned bridges and inspects 1,460 city-owned bridges under contract city services. Public Works is also responsible for safety inspections and evaluations of 1,277 highway bridges listed in the National Bridge Inventory within Los Angeles County and serves as the lead agency for the seismic retrofit of nonstate-owned bridges within Los Angeles County as part of the Statewide Seismic Safety Retrofit Program.

9

Sub-regions/Councils of Government in the County (Arroyo Verdugo, Central Los Angeles, Gateway Cities, Las Virgenes/Malibu, North Los Angeles County, San Fernando Valley, San Gabriel Valley, South Bay Cities, and Westside Cities)

Aviation

Public Works operates, maintains, and develops the five County-owned general aviation airports:

- Brackett Field Airport in La Verne (SD1)
- San Gabriel Valley Airport in El Monte (SD1)
- Compton/Woodley Airport in Compton (SD2)
- Whiteman Airport in Pacoima (SD3)
- General William J. Fox Airfield in Lancaster (SD5)

Altogether, the County-owned airports, which encompass 1,750 acres and nearly 6 miles of runway, are home to over 1,800 general aviation aircraft and over 55 privately-owned aviation businesses. These airports accommodate just over 400,000 aircraft takeoffs and landings each year. The airports are a critical component of the nation's integrated transportation system and play a vital role in regional and local area emergency response.

KEY ISSUES/CHALLENGES

- **Safety**
 - It is critical that measures be taken to reduce transportation fatalities. The number of people killed and seriously injured is on the rise and programs such as Vision Zero are vital elements in bringing those numbers down.
- **Mobility**
 - Changes need to be made to our roadways to make them effective for all users. This will require innovation, robust planning, community input, and additional sources of funding.
- **Transportation Infrastructure State of Good Repair**
 - In order to achieve the vision of a transportation system that is safe, multimodal, and effective, the infrastructure must remain in good condition. This requires continual investment into preserving, rebuilding, and replacing infrastructure in a timely and efficient manner.
 - Innovation and efficiency are key to doing this with the limited funds that are available. However, with the shift towards electrification, the money available through the gas tax will continue to shrink. In addition, costs continue to escalate. Funding sources need to be identified to allow the infrastructure to not only stay in good condition, but to be further improved upon.

STRATEGIES

- **Improve Street Safety**

The County's Vision Zero Action Plan highlights the County's effort to eliminate all traffic-related fatalities, a key measure of public safety. The actions noted below will improve roadway conditions and provide for safer means of transportation.

 - Ensure safe communities through implementation of the Vision Zero Action Plan and creation of Community Safety Plans.
 - Monitor the safety of the transportation network and deliver traffic safety projects and enhancements for all users.
- **Expand Transportation Choices**

A transportation system for the modern age requires the integration of multiple methods of transportation. Efforts to accomplish this require emphasis beyond the traditional to include not just improvements in public transit, but improved bicycle access and walkability.

 - Provide a holistic approach that incorporates various modes of transportation.
 - Improve, enhance, and maintain pavement, bridges, sidewalks, traffic control devices, street lighting, and roadway infrastructure in a state of good repair.
 - Implement sustainable transportation planning policies that promote transit use, reduce car dependency, and reduce greenhouse gas emissions.

STRATEGIES STATUS (FIRST QUARTER: JULY – SEPTEMBER 2024)

Strategy: Improve Street Safety

1. Awarded \$29.81 million through the Bipartisan Infrastructure Law – Safe Streets and Roads for All Grant program FY 2024 for the Safer Steps for LA County Pedestrian Project. The project will install pedestrian safety enhancements at over 70 locations in several unincorporated communities. Additionally, the funding will support development of pedestrian plans for the East San Gabriel Valley and a pilot program to install street racing deterrents.
2. Continued developing projects along the Collision Concentration Corridors (CCC) identified in the Vision Zero Action Plan titled “Vision Zero Los Angeles County – A Plan for Safer Roadways, 2020 to 2025,” which was adopted by the Board on August 4, 2020.
3. Continued work on the design and scoping of traffic safety and complete street elements along City Terrace Drive, a Vision Zero CCC.
4. Continued to implement the Slow Streets Program and install Slow Street networks in collaboration with community sponsors. Installation and repair of temporary signs with “Slow Down” messaging occurred in the unincorporated communities of Altadena, Athens Village, Del Aire, Duarte, East Los Angeles, La Crescenta-Montrose, Long Beach, San Gabriel, Rosewood, San Pasqual, South San Jose Hills, South Whittier, West Whittier/Los Nietos, Windsor Hills, and Wiseburn.

The Slow Streets Program was developed in response to the Coronavirus pandemic, and to support physical distancing and increase active recreation by providing traffic calming messaging. Information on the Slow Streets Program is available on the Vision Zero website, www.VisionZeroLACounty.com. With temporary signs installed at 982 locations (as of September 23, 2024), it is estimated that the Slow Streets Program has served nearly 67,500 unincorporated County residents.

5. Coordinated with the Department of Public Health and the Department of Arts and Culture on agreements to begin work on the Safe Streets and Roads for All Federal Grant FY 2022 funded Florence-Firestone for All project. The Project includes a series of traffic safety measures in the unincorporated County community of Florence-Firestone, including the County’s number one Vision Zero CCC – Firestone Boulevard. Public Works also continued work on planning delivery of the infrastructure components.
6. Continued development of the scope of work for a Safe Routes to School Plan for the unincorporated communities. The work is funded by the California Active Transportation Program Cycle 6.
7. Continued planning for delivery of a California Active Transportation Program Cycle 6 funded quick-build pedestrian safety project in the Lennox community along Collision Concentration Corridors.
8. Began working with a consultant to provide services to identify traffic safety improvements in East Los Angeles along Vision Zero CCCs.
9. Continued assessing the effectiveness of installations of quick-build infrastructure to combat street takeovers in the unincorporated communities and identified additional locations for implementation of measures. To assist in determining the impacts of measures implemented, engaged California Highway Patrol (CHP) and Los Angeles County Sheriff’s Department to collect data on reported incidents.
10. Continued to work with the Federal Highway Administration through the Federal Lands Access Program (FLAP) to finalize grant agreements for a project that will include a variety of safety improvements along 5.44 miles of Mount Baldy Road in the Angeles National Forest from the city of Claremont boundary to the San Bernardino County line. The total project cost is \$17.3 million with \$10 million being awarded to Public Works through a FLAP grant previously awarded.
11. Continued efforts to update all the County’s guidelines for recommending traffic safety enhancements, including pedestrian devices, traffic calming and other Vision Zero enhancements, and develop standard plans for the infrastructure.

12. Continued working with the Federal Highway Administration on executing a grant agreement for a \$3.95 million award through the Safe Streets and Roads for All FY 2023 grant program to support the development of a Rural Roadway Safety Plan for the Antelope Valley, demonstration projects in Willowbrook/West Rancho Dominguez, and a Vision Zero Action Plan update.
13. Continued to collaborate with the Departments of Public Health, Regional Planning, District Attorney, County Counsel, Public Defender, Supervisorial District 2, Chief Executive Office, Los Angeles County Sheriff's Department, California Highway Patrol and street safety advocates to determine best measures to curtail illegal street takeovers and racing, including increasing penalties and providing off street racing alternatives.
14. Completed 24 pavement improvement projects funded with SB1 Road Maintenance and Rehabilitation Account (RMRA) totaling approximately \$48 million in construction costs.

Strategy: Expand Transportation Choices

1. Continued to work with the Castaic Town Council to complete improvements associated with the Interstate 5 (I-5) Emergency Mobility Action Plan to mitigate impacts from unpredictable closures of the freeway. A communications system and sensors will be installed at the intersections to enable Public Works to monitor traffic conditions and coordinate signal operations with the California Department of Transportation (Caltrans) and the city of Santa Clarita.
2. Continued development of the Rosemead Boulevard Complete Streets Project through collaboration with stakeholders. Caltrans continued work on the Project Initiation Document to implement a diverging diamond interchange along Rosemead Boulevard over State Route 60. Caltrans also proposed an alternative design for the interchange known as an “L-7” to be analyzed in the Project Initiation Document.
3. Continued efforts to implement various projects from the Emerald Necklace Phase 1 Implementation Plan, including a multiuse path connection from the existing San Jose Creek bike path with the Watershed Conservation Authority’s new River Park located along the San Gabriel River (Emerald Necklace Projects 10 and 11) and the Quarry Clasp/Peck Park Trail Project (Emerald Necklace Project 4).
4. Continued to administer grant funds from Metro for 38 Traffic Signal Synchronization Projects (TSSP) and Intelligent Transportation System (ITS) projects either in design or procurement/construction phase. These projects will synchronize traffic signals on 35 major corridors involving approximately 840 intersections in the unincorporated County and the cities of Arcadia, Artesia, Baldwin Park, Bellflower, Carson, Cerritos, Claremont, Commerce, Compton, Covina, Downey, El Monte, El Segundo, Gardena, Glendale, Hawthorne, Industry, Inglewood, Irwindale, Lakewood, La Canada Flintridge, La Mirada, La Verne, Lawndale, Long Beach, Los Angeles, Lynwood, Manhattan Beach, Monrovia, Montebello, Pico Rivera, Pomona, Redondo Beach, Rosemead, San Dimas, Santa Fe Springs, South El Monte, South Gate, Temple City, Walnut, and Whittier. The total funding for these active TSSP/ITS projects is approximately \$129 million.
5. Awarded \$700,000 through the SB1 Sustainable Transportation Planning Grant Program for the Los Angeles County Unincorporated Area Truck Routes Master Plan.
6. Continued to administer grant funds from Metro for design of the Gateway Cities Fiber Optic Communications and Closed-Circuit Television Camera (CCTV) Project which will install fiber optic communications and 13 CCTV cameras at key intersections in the Gateway Cities area. The project will establish fiber optic communication connections with the cities of Downey, Norwalk, Santa Fe Springs, and South Gate, enabling enhanced traffic coordination. Construction is expected to be completed in fall 2026.
7. Continued collaboration with Metro and the South Bay Cities Council of Governments to add the County-maintained signalized intersections onto the South Bay Fiber Network (SBFN). The SBFN is a dedicated fiber optic network connecting the South Bay cities, Public Works, and other public agencies. Upon connecting the County signals to the SBFN, Public Works will be able to receive real-time traffic data to support monitoring and management of the County’s traffic signal systems in the South Bay. The SBFN will provide critical infrastructure to support agencies’ “Smart City” applications, as well as accommodate broadband connectivity to residences and businesses.
8. Continued working with a consultant on a comprehensive update and expansion of the County’s Bicycle Master Plan. The update will include revising the existing list of bikeways; proposing a new bikeway network, including Class IV bikeways; incorporating first/last mile improvements to connect bikeways to transit stations and bus stops; and developing policies and guidelines for shared bikeway infrastructure with micromobility devices.
9. Continued preparation of the solicitation documents to procure an e-bike library operator for the East Los Angeles Bike Share Demonstration Project, an electric bicycle loan program for residents who commit to meet usage requirements. The request for proposal is expected to be released in October 2024.
10. Continued implementation of Affordable Housing and Sustainable Communities (AHSC) projects, including 3rd and Dangler and East LA Wellness Center in unincorporated East Los Angeles, Willowbrook II in unincorporated Willowbrook, Florence Neighborhood Mobility in unincorporated Florence-Firestone, to improve walking, biking, and transit access near affordable housing and key destination locations.
11. Continued working with a consultant to develop alternatives along Workman Mill Road to implement bicycle lanes from unincorporated Avocado Heights and North Whittier to connect to Rio Hondo College and Puente Hills Landfill Park and connect to existing bike lanes in the city of Whittier.

12. Continued working on Measure M Multi-Year Subregional Program (MSP) projects, including Westmont/West Athens Pedestrian Improvements Phase 1, Westmont/West Athens Pedestrian Improvements Phase 2, Dominguez Channel Greenway and 30th Street West.
13. Continued working with partner agencies and Metro on Metro Active Transport (MAT) Program funded projects along Randolph Street, Redondo Beach Boulevard, Aviation/LAX Station, and Slauson Station to support walking, biking, and transit access and first/last mile routes.
14. Continued working with Metro on funding agreements for MAT and MSP projects for transportation improvements within the East Los Angeles Civic Center to support walking, biking, transit access and first/last mile routes.
15. Continued working on the Herbert Bridge Beautification Project to implement aesthetic and placemaking enhancements to the Herbert Ave Bridge in City Terrace.
16. Continued coordination with Department of Beaches & Harbors on the development of pedestrian and bike path improvements along the Ballona Creek jetty in Marina del Rey.
17. Continued construction of Vincent Community Bikeways Project, which is anticipated to be completed in October 2024. The project will implement 4.5 miles of new bikeways, including bike path, separated bike lane, and bike route segments in the Vincent community.
18. Continued coordination with Internal Services Department and Southern California Edison in the implementation of grant-funded curbside electric vehicle charging infrastructure in East Los Angeles.

RESULTS-BASED ACCOUNTABILITY: SUMMARY

Population Accountability

Population Outcome: Los Angeles County residents have access to state-of-the-art transportation infrastructure that is safe, resilient, sustainable, and equitable.

Population Indicators	Current Value	Current Reporting Period	Previous Value	Previous Reporting Period
Number of roadway fatalities in the County ¹	14	7/1/24 - 9/30/24	20	4/1/24 - 6/30/24
Percentage of County residents using alternate methods of mobility	9.1% ²	1/1/23 - 12/31/23	8.9%	1/1/22 - 12/31/22

Performance Accountability

Strategy 1: Improve Street Safety					
Performance Measures (July – September 2024)	Current Actual Value	Previous Value	Current Target Value	Current Trend	Baseline % Change
Number of safety improvements implemented on Collision Concentration Corridors ³	221	220	250 (6/30/25)	↑	0.45%
Number of Vision Zero Infrastructure-related actions completed	21 of 63	21 of 63	63 of 63 (12/31/30)	→	0.0%
Number of Community Traffic Safety Plans completed in collaboration with stakeholders	1	1	10 (6/30/26)	→	0.0%

Strategy 2: Expand Transportation Choices					
Performance Measures (July – September 2024)	Current Actual Value	Previous Value	Current Target Value	Current Trend	Baseline % Change
Percentage of bikeway miles identified in the Bicycle Master Plan implemented	22.0%	22.0%	25.0% (6/30/24)	→	0.0%
Percentage of shaded bus stops	31.0%	31.0%	33.0% (6/30/25)	→	0.0%
Percentage of streets that have appropriate trees with mature tree canopies	21.1%	21.1%	24.0% (6/30/26)	→	0.0%
Percentage of pavement in good or better condition	35.0%	35.0%	40.0% (6/30/28)	→	0.0%

¹ Value is based on Traffic Collision Report data that Public Works received from the California Highway Patrol (CHP) for unincorporated County roadways. Data set compiled from Los Angeles County Public Works' Collision Database, accessed 9/23/24.

² Value represents 2023 data published on 9/12/24 by American Community Survey through the United States Census Bureau, which is populated on a calendar basis (January through December) for all of Los Angeles County (not just unincorporated communities).

³ Previous values of the number of safety improvements reported may change as project completion dates are reported.

KEY TAKEAWAYS

- All measurements remain neutral or positive as the Transportation CSA focused on the planning of projects while remaining concurrently focused on state of good repair.
- Percentage of County residents using alternate methods of mobility increased 2.2% from 2022 to 2023.



2023 Waste Generation in Unincorporated County:

- Population: **1 million**
- Waste generation: **2.7 million tons**
- Equivalent to **15 pounds per person per day**

2023 Waste Disposal in Unincorporated County:

- **0.91 million tons** disposed in landfills
- Equivalent to **5 pounds per person per day**

MAJOR PROGRAMS/SERVICES

Public Works is the lead County agency responsible for advising the Board of Supervisors on waste management issues and manages numerous Countywide, regional, and unincorporated area programs that monitor, regulate, and manage the collection, treatment, and disposal of solid and hazardous waste.

Los Angeles County has the most complex solid-waste management system in the nation, comprised of 10 municipal solid waste landfills, 9 inert-waste landfills, over 70 materials recovery, transfer/processing and organic waste management facilities, and over 100 permitted waste haulers.

Public Works also manages, operates, and maintains sewer infrastructure comprised of sewer lines, sewage pumps, and wastewater control treatment plants within the Consolidated Sewer Maintenance and the Marina Sewer Maintenance Districts, providing services to over 2 million people within the County unincorporated communities and 37 cities. The Environmental Services Core Service Area is also responsible for Public Works' fleet, which includes on- and off-road vehicles and equipment.

Waste Collection and Disposal

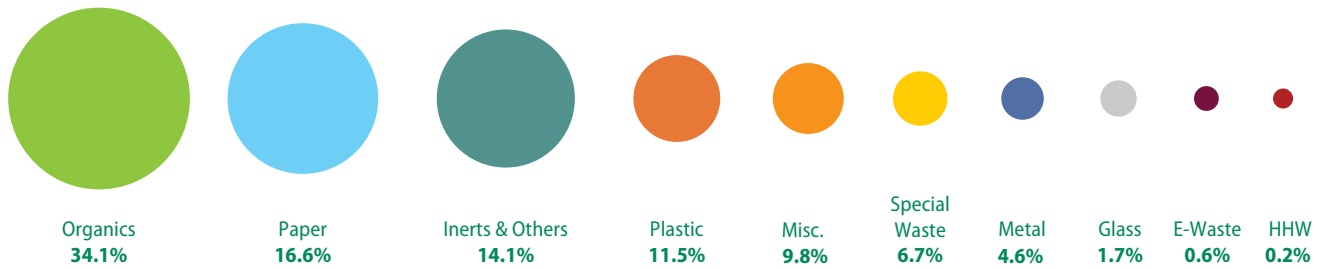
Public Works provides trash collection and recycling services for approximately 1 million unincorporated area residents and nearly 20,000 businesses through comprehensive waste collection franchises and Garbage Disposal District systems. In the Antelope Valley and Acton/Agua Dulce, residential trash collection services are provided to approximately 100,000 residents through an open-market system. Each year, Los Angeles County unincorporated area residents and businesses generate nearly 2.7 million tons of solid waste; approximately 0.9 million tons of which are disposed at landfills.

Waste Diversion Programs

On Sept. 13, 2022, the Board of Supervisors unanimously adopted the Los Angeles County Zero Waste Plan which is an update to the 2014 Roadmap to a Sustainable Waste Management Future. The Zero Waste Plan lays out a general framework for the strategies and initiatives that the County can implement to decrease reliance on landfills by maximizing the recovery of products, materials, and energy from waste that would otherwise be disposed. The Plan includes disposal reduction targets to achieve 95 percent waste diversion by 2045.



Components of Waste Stream



Public Works manages numerous County unincorporated areas and Countywide solid waste reduction and recycling programs, a few of which include the Household Hazardous and Electronic Waste (HHW/E-Waste) Management, Environmental Education & School Outreach, Smart Gardening, Construction & Demolition Debris Recycling, and Food Donation Recovery and Outreach Program (Food DROP) Programs.

Sewer Maintenance Infrastructure

The sewer infrastructure, maintained by Public Works, includes 4,630 miles of sanitary sewers, 157 pump stations, and 4 wastewater treatment plants.

Public Works' sewer maintenance staff has a goal to inspect 500 miles of sewer infrastructure each year via a Closed-Circuit Television (CCTV) program to improve system maintenance by early identification and repair of blocked/deteriorated sewer lines. The outcome of this inspection program is a reduction of overflow events and assurance of continuous uninterrupted sanitary sewer service.

Public Works Fleet

The Public Works fleet includes more than 3,000 pieces of on- and off-road vehicles and equipment. To support the mission of preserving sustainable and safe communities, gasoline and diesel equipment will be replaced with cleaner burning alternative fuels and zero-emission vehicles.

6,199 tons

Household Hazardous Waste/E-Waste Collected FY 2022-2023

36,585 gallons

Used-motor oil collected at
County used-motor oil permanent centers
FY 2023-24

18.6 tons

Batteries collected at
designated County Libraries
FY 2023-24

2023 Solid Waste Quantities in Los Angeles County

Generation = Diversion + Disposal



Amount of trash generated

**31.9 million
tons per year**



Amount of trash diverted

**20.7 million
tons per year**



Amount of trash disposed

**11.2 million
tons per year**



KEY ISSUES/CHALLENGES

- The sustainable management of the 31.9 million tons of solid waste generated by residents and businesses per year is a major challenge, as well as ensuring adequate disposal capacity for the waste that cannot be recycled or otherwise diverted.
- Waste disposed at landfills is also a major source of greenhouse gases that contributes to climate change.
- Increasing regulations and the communities' demand for equitable, environmentally conscious, and economical solid waste management systems challenge our ability to meet customer expectations.
- China's National Sword Policy, which was announced in 2017 and took effect in 2018, has created challenges for California's recycling markets by restricting the import of recyclable materials such as low-grade plastics, unsorted mixed paper, and scrap metals.
- Los Angeles County has inadequate organic waste management infrastructure to comply with the organic waste landfill disposal reduction requirements of Senate Bill 1383 (SB 1383).
- Industrial waste discharges and the underground storage of hazardous materials, if not properly managed, can lead to surface and groundwater contamination, which impacts health and safety and the environment.
- Ensuring the sewer system is sustainable through risk-based condition assessment of the infrastructure reduces sanitary sewer overflows and provides reliable sewer services at an affordable cost.
- Aging infrastructure and varying regional management practices have reduced the effectiveness and reliability of the sewer infrastructure.
- Implementing policies and practices to reduce our carbon fuel footprint is key to support cleaner, healthier communities.

STRATEGIES

- **Build Infrastructure to Support Organic Waste Diversion**
 - Utilize InfrastructureLA and the Solid Waste and Recycling Management Subcommittee (SWARM) to discuss regional issues related to infrastructure and engage local leaders to specifically discuss current challenges surrounding sustainable waste management in Los Angeles County.
 - Leverage and secure funding to develop the required organic waste processing infrastructure for jurisdictions to comply with the requirements of SB 1383.
 - Encourage, promote, and support the development of conversion technologies as alternatives to landfills and the establishment of a streamlined and coordinated County permitting process for these facilities in the surrounding region.
 - Prioritize recycling organic waste and developing new organic waste recycling infrastructure capacity to convert organic waste into valuable products such as renewable energy and fuels.
- **Prepare Communities to Manage Organic Waste**
 - Develop and implement a comprehensive communication plan with multimedia components and robust community engagement and outreach.
 - Establish strong partnerships with local officials and various community-based organizations.
 - Implement organic waste collection for all residents and businesses in all County unincorporated communities.
- **Keep Unincorporated County Communities Clean**
 - Implement Strategies and Initiatives in the County's Zero Waste Plan to decrease reliance on landfills and achieve zero waste by 2045.
 - Implement the new Commercial Franchise system to require organic waste recycling and other services to increase recycling in the commercial sector.
 - Expand Food DROP to assist more businesses in connecting with non-profits to distribute food to those in need.
 - Reduce illegal dumping in County unincorporated area roads, streets, and alleys through collection, education and outreach campaigns, and enforcement of illegal dumping violations.
 - Ensure the sanitary sewer collection system facilities are properly operated, maintained, and managed to reduce frequency and severity of sanitary sewer overflow events and their potential impacts on public health, safety, and the environment while meeting applicable regulations and laws.
 - Transition the Public Works Fleet to an all-electric fleet to reduce vehicle greenhouse gas emissions.

STRATEGIES STATUS (FIRST QUARTER: JULY – SEPTEMBER 2024)

Strategy: Build Infrastructure to Support Organic Waste Diversion

Public Works is pursuing the following actions to advance the development of organic waste management infrastructure:

1. Develop a proposed anaerobic digestion (AD) facility at the Calabasas Landfill.
 - Currently in exclusive negotiations with the private developer.
 - Developed a proposal for establishing a Community Advisory Committee (CAC) to provide input and feedback on the proposed AD facility.
2. Identify locations to site new infrastructure and expand existing material processing facilities' ability to incorporate organic waste processing and conversion technologies.
 - Completed preliminary feasibility analysis of 13 closed landfill sites. Identified three closed landfill sites for further analysis. A detailed evaluation of these three sites is underway.
 - Finalized a scope of work and began Countywide siting analysis. The initial stage of the analysis yielded 52 potential sites. A workplan for the detailed evaluation of these sites is currently being developed.

Strategy: Prepare Communities to Manage Organic Waste

Public Works is advancing efforts to prepare communities to manage their organic waste through the following:

1. Ensure organic waste collection service is successfully implemented within all unincorporated communities.
 - Most residential customers in County unincorporated areas have organic waste collection service. New and revised waste collection contracts with organic waste service are forthcoming.
 - Monitored implementation to ensure proper source separation of waste materials.
 - Continued the roll-out of organic waste containers, site visits, and outreach for all commercial customers.
 - Taking necessary steps to develop a new waste collection system in North County.
 - Addressing comments received during the public review of the Draft Environmental Impact Report.
2. Expand the Food Donation and Recovery Outreach Program (Food DROP).
 - Completed the 2024 Countywide Food Recovery Capacity Assessment Report and submitted the findings and calculations to CalRecycle.
 - A total of 2,450 Tier One (i.e., supermarkets/grocery stores, food service providers, food distributors, and wholesale food vendors) and 3,741 Tier Two facilities (i.e., restaurants, hotels, health facilities, large venues/events, state agencies, and local education agencies) were identified, with an estimated 221.64 million pounds of edible food disposed of each year, which could potentially be recovered and donated to communities in need.
 - There were 205 verifiable local food recovery agencies with existing food recovery capacity to accept 261.45 million pounds of recovered food annually. Furthermore, 166 food recovery agencies planned to expand their capacity to accept an additional 24 million pounds of donated food in the coming years.
 - Developed a list of Edible Food Generators, who may not be complying, to plan for and provide additional outreach.
 - Continued to update the Countywide food recovery map and initiated discussions on setting up a food recovery database system that will assist with monitoring and compiling reports.

3. Implement a strong, comprehensive organic waste communication plan.
 - Continued to implement the communication plan that includes strategies to educate residents and local officials, and support collaboration to manage organic waste in the region.
 - Attended 30 community outreach events to provide residents education and resources on sustainability programs, including organic waste management.
 - Hosted 7 community specific engagement meetings to provide residents updates about their waste hauling services, which include organic waste recycling.
 - Provided educational information and resources via FightFoodWasteLA.com, CleanLA.com, social media platforms, and print materials.
 - FightFoodWasteLA.com provides information and resources on food waste reduction and organic waste recycling to County residents and businesses.
 - Launched a Google Ads Campaign to promote FightFoodWasteLA.com in August 2023 that has attracted over 78,000 active users to the website through the end of September 2024. In August 2024, the website was upgraded from a single page to multiple pages to better deliver clear and comprehensive information to the public. FightFoodWasteLA.com provides information and resources on food waste reduction and organic waste recycling to County residents and businesses.
4. Seek feedback from the community on awareness of and participation in organic waste management.
 - Continued to distribute surveys to gather customer satisfaction feedback on current waste and recycling services, including organic waste management. Surveys were available on postcards, newsletters, and social media.
5. Secure funding to help prepare communities to manage organic waste.
 - Received approximately \$2.5 million in local assistance grant funds from CalRecycle to utilize by April 2026. Public Works will be utilizing the funds to procure large scale multilingual media campaigns. Funds will also be utilized to purchase equipment and enhance the FoodDROP program.

Strategy: Keep Unincorporated County Communities Clean

Public Works is taking action to keep Unincorporated County communities clean, provide efficient and high-quality waste collection, and advance the Zero Waste Plan. The following efforts help address the impact of greenhouse gas emissions from organic waste and the Public Works fleet, as well as mitigate sanitary sewer spills, thereby ensuring the health and safety of our customers and the environment:

1. Continued to implement the County's Single-Use Plastics Ordinance, including developing implementation guidelines and a waiver process.
 - Began developing a community outreach plan.
 - Provided resources and conducted in-person site visits to businesses subject to the ordinance.
2. Established Repair Clinic events to teach residents how to repair items to help divert material from ending up in landfills.
 - Public Works hosted Repair Clinic/Fix It Clinic events on July 27, 2024, at the Joslyn Adult Center in Burbank and on August 11, 2024, at Trademark Brewing in Long Beach. Future Repair Clinic events are planned at various locations throughout the County.
3. Educated students through the Countywide Environmental Defenders Program (K-5th grade) with four Countywide live in-person assembly presentations focusing on the Four Rs (Reduce, Reuse, Recycle, and Rethink), Household Hazardous Waste and Electronic Waste, Stormwater Pollution Prevention, Water Conservation, and

organic waste. Due to summer break, schools were not in session for a portion of this reporting period.

4. Through the Countywide Generation Earth (GE) Program (6th-12th grade) 7 schools implemented environmental service-learning projects directly impacting 325 students. Due to summer break, schools were not in session for a portion of this reporting period.
 - GE hosted two sessions of the Building a Water Resilient Los Angeles County workshop, which explored water issues in Los Angeles County and showcased how environmental action projects can empower students to address these challenges. Eighteen participants registered for the workshops.
5. Community Outreach and Education
 - Public Works participated in 30 community events to provide resources about programs available to all County residents to help properly manage and recycle material such as mattresses, tires, organic waste, and more.
 - Public Works hosted and attended community meetings to provide unincorporated residents with information on their waste and recycling services as well as additional resources.
 - A media campaign with the iHeart Media and the Dodgers Foundation helped promote recycling of beverage containers. The message was shared via radio spots, social media, and digital banners. Public Works also attended five Dodger Day events to further promote beverage container recycling, alternatives to illegal dumping, as well as other sustainability programs.
6. Reduce illegal dumping in County unincorporated areas roads, streets, and alleys.
 - Continued removal of illegally dumped waste by contracted waste haulers and Public Works maintenance crews.
 - Continued outreach to promote proper disposal options and therefore prevent illegal dumping.
 - Held community curbside cleanup events for convenient disposal of unlimited trash and bulky items.
 - Held 2 tire collection events, collecting 42.74 tons (equivalent to 42,740 passenger tires).
 - Held 6 mattress collection events, collecting 499 mattress/box spring units.
 - A media campaign with iHeart Media continued to help promote proper management of bulky items and reporting of illegal dumping. The message is shared via radio spots, digital banners, and billboards.
7. Provide residents with convenient, safe, and legal means to properly manage their HHW/E-Waste.
 - Provided 11 temporary and 11 permanent collection events.
 - Encouraged source reduction, alternatives to HHW, and promoted the HHW Reuse Centers.
 - Increased outreach and education regarding other disposal options available for used motor oil and oil filters, sharps (e.g., needles and syringes), and household batteries.
 - Continued to promote curbside collection of E-Waste and the mail-in program for sharps available to residents in County unincorporated communities.
8. Reduce frequency and severity of sanitary sewer overflow events.
 - Issued Notices to Proceed (NTP) for repairs in the Unincorporated Communities of West Carson (1 NTP) and East Los Angeles (1 NTP), and in the cities of Artesia (1 NTP), Palos Verdes Estate (1 NTP), and Rancho Palos Verdes (3 NTPs).
9. Transition the Public Works Fleet to an all-electric fleet.
 - Public Works currently has 51 electric vehicles in its fleet.
 - Total electric trucks in the fleet are five Chevy Silverados and one Ford F-150 Lightning.
 - Public Works currently has an active purchase order for 24 electric Ford F-150 Lightning trucks Estimated delivery date is December 2024.



Generation Earth 2024 Summit

RESULTS-BASED ACCOUNTABILITY: SUMMARY

Population Accountability

Population Outcome: People in Los Angeles County are thriving in a safe, clean, and sustainable environment.				
Population Indicators	Current Value	Current Reporting Period	Previous Value	Previous Reporting Period
Tons of waste disposed in landfills	2,676,126	Oct – Dec 2023	2,791,477	July – Sept 2023
Reports of illegal dumping in LA County	4,184*	July-Sept 2024	2,025	Apr -June 2024
Tons of greenhouse gas emissions in LA County	5.2 Million MTCO2E	July-Sept 2023	5.2 Million MTCO2E	April – June 2018
Number of health advisory warnings and closures for lakes, rivers, and beaches annually in Los Angeles County due to sewage spills	0	July-Sept 2024	1	April – June 2024

* Reports of illegal dumping are July and August with an estimate for September.



Dodger's Day at Heartwell Park

Performance Accountability

Strategy 1: Build Infrastructure to Support Organic Waste Diversion					
Performance Measures (July – September 2024)	Current Actual Value	Previous Period	Current Target Value	Current Trend	Baseline % Change
Number of sites permitted*	2	2	3	→	0%
Facilities built/expanded	0	0	3	→	0%
Grants/funding secured	0	0	2	→	0%

* Current Target Value is annual. Values recorded under current and previous values represent a running total.

Strategy 2: Prepare Communities to Manage Organic Waste					
Performance Measures (July – September 2024)	Current Actual Value	Previous Period	Current Target Value	Current Trend	Baseline % Change
Number of people engaged quarterly	152,283	172,782	350,000	↓	11.9%
Tons of organic waste collected quarterly	23,084*	46,455	54,528	↓	50.3%

*Tons of organic waste collected is July and August with an estimate for September.

Strategy 3: Keep Unincorporated County Communities Clean					
Performance Measures (July – September 2024)	Current Actual Value	Previous Value	Current Target Value	Current Trend	Baseline % Change
County Unincorporated Area diversion rate	67%	66%	80%	↑	1.5%
Tons of illegal dumping collected quarterly	3,483*	4,019	4,238	↓	13%
Number of customer complaints quarterly	4,529**	3,457	7,332	↑	31%
Customer experience rating	3.31	3.31	3.0	→	0%
Tons of GHG emissions reduced annually for waste diversion	572,802	549,655	626,607	↑	4.2%
Tons of GHG emissions reduced annually for Public Works' fleet	241***	236	3,790	↑	2.1%
Rate of sewer spills (per 100 miles maintained)	0.23	0.46	0	↓	50.0%

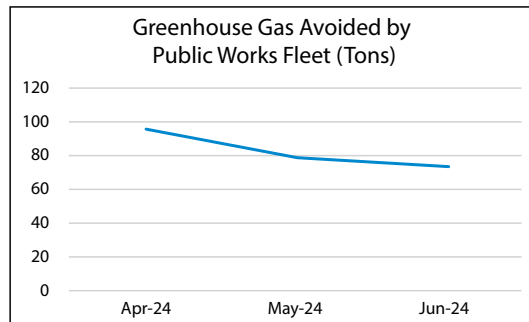
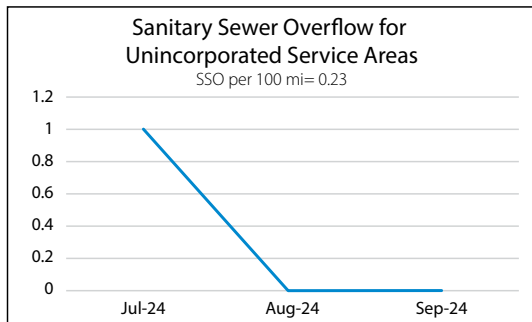
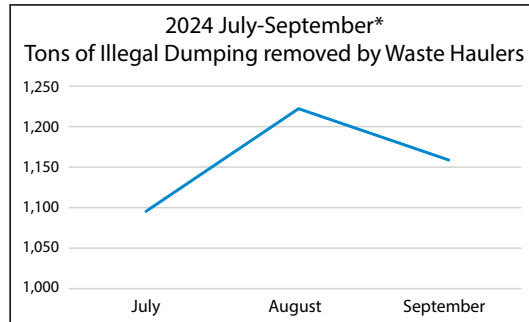
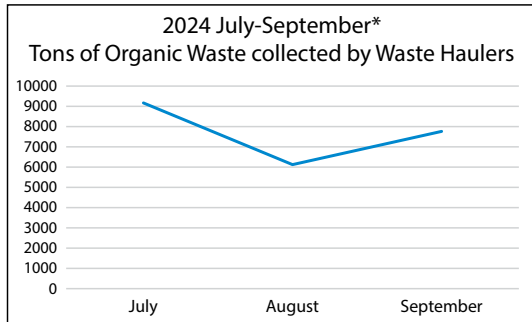
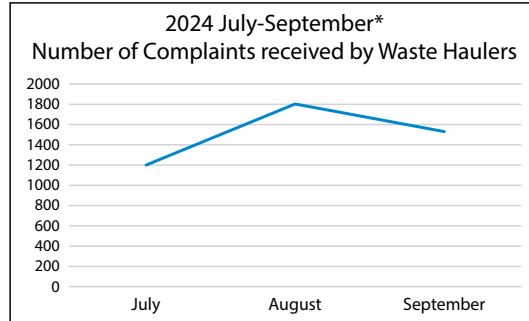
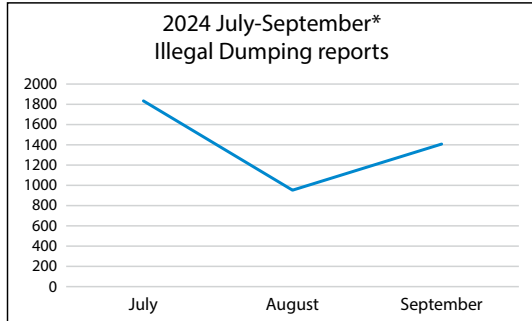
*Illegal dumping tonnage includes actual data for July and August with a projection of 1,161 tons for September. The previous period was April and May with a projection of 1,328 tons for June.

**Number of customer complaints includes actual data for July and August with a projection of for September. The previous period was April and May and a projection of 1,130 for June.

***PW Fleet GHG emissions reduced is a quarter behind. Data is April – June 2024.

KEY TAKEAWAYS

The following charts represent a few of the Performance Measures trends for Strategies 2 and 3.



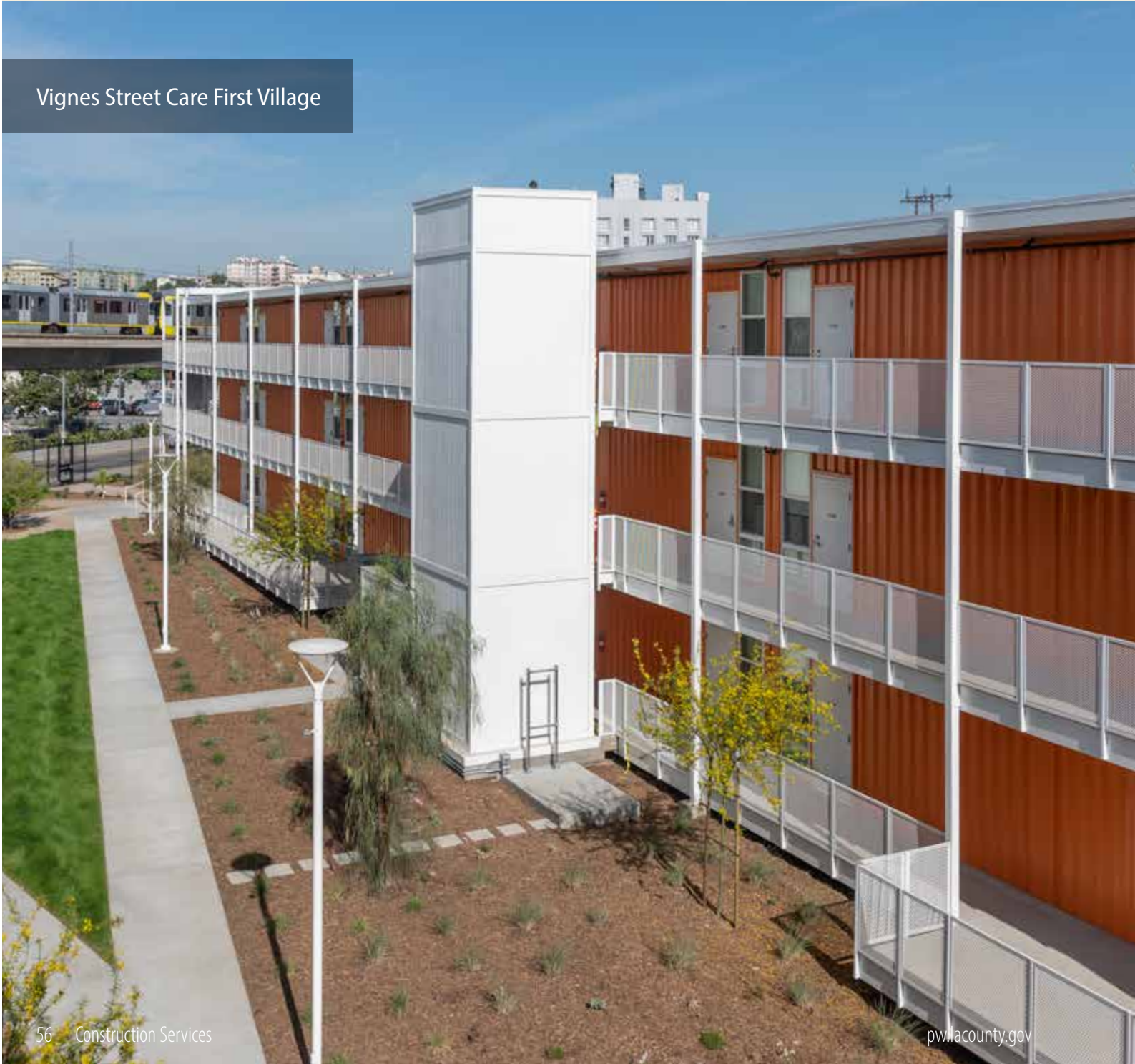
* September data is a projection



Construction Management

"Public Works is the Builder of Choice in Los Angeles County."

Vignes Street Care First Village



In FY 2024–25

3 new or renovated County building projects completed, valued at nearly \$6 million, and within budget

3 infrastructure projects completed, valued at \$21 million



MAJOR PROGRAMS/SERVICES

Capital Projects Programs

Public Works' Construction Management Core Service Area provides program/project management services for the County's Capital Projects Program. This includes the renovation of existing building facilities and the master planning, programming, and construction of new building facilities for many County departments, including Animal Care and Control; Beaches and Harbors; Chief Executive Office; Child Support Services; District Attorney; Fire; Health Services; Justice, Care, and Opportunities; Mental Health; Parks and Recreation; Probation, Public Health; Public Libraries; and Sheriff.

Currently, Public Works manages approximately 230 active projects with a total project value of nearly \$3.7 billion.

Infrastructure Program

Construction Management also manages Public Works' annual Infrastructure Program. It provides internal service to Public Works divisions by providing a complete menu of professional project management and construction management services for a wide variety of infrastructure projects, each with unique requirements, schedule constraints, and impacts on the surrounding communities. These services are delivered at the highest level at the most affordable cost by delivering the individual projects in strict accordance with legal, community, and design requirements; providing for the general safety of the public and County staff; and by employing best practices from both the construction and project management industries.

As Public Works continues to become even more innovative and cost-efficient for its internal customers and the public, it is implementing the optimal model for an outcome based, 21st Century, and integrated infrastructure project delivery system that optimizes process; is customer-oriented; efficient; effective; and innovative through the creation of a third Project Management Division.

The result will allow the current best practices of both infrastructure and capital project delivery methods to merge strengthening the overall delivery.

Currently, Public Works manages 270 active infrastructure projects with a value of over \$2 billion.



Park to Play Bridge and Stoneview Park

The County's Homeless Initiative

The Homeless Initiative is designed to generate a coordinated set of County Strategies to reduce homelessness through an intensive, inclusive planning process in six areas: prevention of homelessness, subsidized housing, increased income, case management and support services, creation of a coordinated system, and an increase in affordable housing.

As part of the Homeless Initiative Strategies, Public Works has completed construction of four Restorative Care Village (RCV) projects at the Los Angeles General Medical Center (formerly LAC+USC Medical Center) in Los Angeles, Rancho Los Amigos National Rehabilitation Center in Downey, Olive View Medical Center in Sylmar, and the Behavioral Health Center at the Martin Luther King, Jr. Medical Center. Together, these projects provide a total of 434 transitional housing beds to assist patients with medical, mental health, and substance use disorders. Public Works has completed design-builder solicitation for subsequent phases of the RCV at Los Angeles General Medical Center, which will provide 32 residential withdrawal management beds and 96 subacute mental health beds. A feasibility study was completed to construct an RCV at the Harbor-UCLA Medical Center, which recommends an additional 64 transitional beds.

Relative to the Los Angeles County Shelter Crisis Declaration, Public Works, in association with the Board of Supervisors and Chief Executive Office, is also embarking on fast tracking projects to create new homeless shelters and safe parking sites throughout the County. From 2019 to 2020, 5 interim housing projects were completed to house up to 240 residents. In response to the COVID-19 pandemic, the Hilda L. Solis Interim Housing Project was completed in six months and began operations in April 2021 providing housing for 232 residents on a four-acre site with each bedroom unit having its own private bathroom and kitchenette. At Rancho Los Amigos National Rehabilitation Center, Buildings 601 and 602 have been repurposed to provide 78 beds for interim housing. The Glenchur Building Interim Housing Expansion at the Old High Desert Hospital has provided 48 beds for winter of 2023 and will provide up to 22 additional beds by fall of 2024. Additional interim projects in progress can provide up to 800 additional new beds and safe parking for up to 100 vehicles and recreational vehicles. Public Works also continues to support the Chief Executive Office with jurisdictional approval assistance and design and construction monitoring for Project Homekeys 1.0, 2.0, and 3.0, where the California Department of Housing and Community Development has funded County partnerships with local nonprofit organizations to acquire and convert motels into interim housing and permanent supportive housing for Los Angeles County residents experiencing homelessness. Project Homekey has delivered nearly 600 units to date, with another 1,475 units currently in development.

The County has worked with the State of California to identify six unused buildings at the Metropolitan State Hospital campus in Norwalk that will be renovated and transformed into a continuum of housing and treatment options for people with mental health challenges - the proposed Los Angeles County Care Community.

500
total active projects
with a project value
of approximately
\$5.7 billion



Ladera Park

KEY ISSUES/CHALLENGES

- **Project Management Delivery**
Keeping in-line with project control technology and trends allows Public Works to foster a competitive edge and collaborate more efficiently with the private industry. Utilizing technology and project delivery methods that are on-par with our contractors helps to improve process efficiencies, resulting in lower costs, time savings, and improvement in customer and stakeholder satisfaction demands.
- **Addressing Broad Scope of Client Needs**
All County departments provide specific services and have unique needs while each Supervisorial District has different priorities that best serve their constituents. Public Works must be able to proactively respond and quickly adapt to changing customer demands.
- **Aging Buildings and Infrastructure**
 - Ensuring processes are in place to allow Public Works to carry out the evaluation and repair or replacement of buildings and infrastructure that have outlived their useful lifespan.
 - Ensuring sufficient staff and resources are available to carry out projects funded through the recently approved Federal and State legislative bills.

STRATEGIES

- **Improve Organizational Effectiveness**
 - Prioritize streamlining processes and implementing organizational improvements to ensure that projects are delivered within scope, schedule and budget.
 - Implementing a new Project Management Information System will play a major role in process improvements.
- **Improve Client Relations**
 - Enhance customers' understanding of the infrastructure development process and the roles and responsibilities of other stakeholders, including the part of the customer.
 - Develop project delivery playbooks and capital project delivery road maps for both vertical and horizontal infrastructure projects.
 - Conduct customer experience surveys and meetings with client departments to understand their perspective of successes and challenges to improve project management practices.

STRATEGIES STATUS (FIRST QUARTER: JULY - SEPTEMBER 2024)

Strategy: Improve Organizational Effectiveness

1. Based on Public Works' review of its current project delivery approaches, a Project Controls Group was formed to provide support to infrastructure projects by providing cutting-edge project scheduling, information gathering, tracking, and reporting. This quarter, the group continued to focus on improving portfolio data accuracy and reporting available for different Enterprise users.
2. Public Works is working to revise the Request for Proposal for the new Project Management Information System (PMIS), which includes more detailed and explicit requirements for the County's business. The PMIS is to provide an integrated program and project management function for the Construction Management Branch.
3. Public Works has deployed an outcome based integrated infrastructure project delivery model that has standardized processes, procedures, tools, and technologies. This system, when fully stabilized, will optimize processes, be customer-oriented, and be more efficient, effective, and innovative. This quarter, stabilization efforts continued to improve delivery system processes, procedures, tools, and technologies deployed to all infrastructure projects within the Enterprise portfolio.

Strategy: Improve Client Relations

1. Public Works collaborated with the Internal Services Department and the Los Angeles County Development Authority on a Project Delivery Playbook that outlines the types of projects and services each can provide to other County departments. The initial playbook was completed in June 2023 and was reviewed by the Chief Executive Office. Further review of the Playbook has expanded the information contained in it and the document will be revisited by all three departments to ensure it captures the vision of all.
2. Public Works is creating a Capital Project Delivery Roadmap, which will outline the various phases in the implementation of County Capital Projects and roles and responsibilities. A draft of the roadmap was completed in June 2023 with input by the Chief Executive Office. Public Works will continue to finalize the draft and share it with the Board offices and the various client departments for whom Public Works delivers projects.
3. Public Works implemented a Customer Experience Survey for their County Department and Public Works Division customers.

RESULTS-BASED ACCOUNTABILITY: SUMMARY

Population Accountability

Population Outcome: Public Works is the Builder of Choice in Los Angeles County.				
Population Indicators	Current Value	Current Reporting Period	Previous Value	Previous Reporting Period
Percentage of vertical infrastructure projects delivered within scope, as expressed by:	N/A (0 of 0)	7/1/24 – 9/30/24	100% (2 of 2)	4/1/24 – 6/30/24
A) Percent of change orders executed on new construction projects within 10%				
Percentage of vertical infrastructure projects delivered within scope, as expressed by:	100% (3 of 3)	7/1/24 – 9/30/24	86% (6 of 7)	4/1/24 – 6/30/24
B) Percent of change orders executed on renovation/refurbishment projects within 15%				
Percentage of vertical infrastructure projects delivered within schedule	100% (3 of 3)	7/1/24 – 9/30/24	67% (6 of 9)	4/1/24 – 6/30/24
Percentage of vertical infrastructure projects delivered within budget	100% (3 of 3)	7/1/24 – 9/30/24	100% (9 of 9)	4/1/24 – 6/30/24
Percentage of horizontal infrastructure projects delivered within scope, as expressed by percent of change orders executed on projects within 15%	60% (3 of 5)	7/1/24 – 9/30/24	N/A	4/1/24 – 6/30/24
Percentage of horizontal infrastructure projects delivered within schedule	0% (0 of 5)	7/1/24 – 9/30/24	N/A	4/1/24 – 6/30/24
Percentage of horizontal infrastructure projects delivered within budget	20% (1 of 5)	7/1/24 – 9/30/24	N/A	4/1/24 – 6/30/24

Performance Accountability

Strategy 1: Improve Organizational Effectiveness					
Performance Measures (July - September 2024)	Current Value	Previous Value	Current Target Value	Current Trend	Baseline % Change
Percentage of vertical infrastructure projects with soft cost below 30% *	67% (2 of 3)	56% (5 of 9)	80%	↑	19.6%
Percentage of vertical infrastructure projects with bids/proposals within 10% of final cost estimates	100% (2 of 2)	100% (1 of 1)	80%	→	0%
Percentage of horizontal infrastructure projects with soft cost below 30% *	80% (4 of 5)	N/A	80%	N/A	N/A
Percentage of horizontal projects with bids/proposals within 15% of final cost estimates	20% (1 of 5)	N/A	80%	N/A	N/A

* Please refer to Key Takeaways below

Strategy 2: Improve Client Relations					
Performance Measures (July - September 2024)	Current Value	Previous Value	Current Target Value	Current Trend	Baseline % Change
Percentage of Customer satisfaction rating above "Good" *	81%	N/A	90%	N/A	N/A

* Please refer to Key Takeaways below

KEY TAKEAWAYS

- Overall, baseline data shows that our Core Service Area is excelling in some areas while other areas have opportunities for improvement.
- Soft cost data for infrastructure projects is still being refined and going through quality assurance review to ensure that data related to Transportation and Water projects is accurate. Baseline data this quarter for vertical infrastructure projects includes one of the three projects that is not within 30% and is a small project less than \$1 million.
- Horizontal infrastructure project data reported for the Fiscal Year quarter are for projects that have completed the lifecycle within that quarter and excludes Job Order Contract and On-Call Work Orders, or projects authorized via Board Motion.
- The Customer Experience Survey has been sent to the customers. To date (through 9/26/24), 8 Public Works Divisions and 10 County Departments have responded. This partial data is reflected in the table above.



Public Contracting and Asset Management

"Public Works is a center of excellence for modern infrastructure design, technical services, asset and property management, mapping services, and public contracting."





MAJOR PROGRAMS/SERVICES

The Public Contracting and Asset Management (PCAM) Branch is an internal-serving Business Area that focuses on providing technical support services to the Enterprise.

PCAM's core functions assist Public Works with designing sustainable infrastructure that uplift the lives of County residents; managing assets that promote the equitable and transparent delivery of services and information; delivering technical support services such as survey, mapping, real property management, geotechnical and materials testing, and traffic striping and signal operation; and providing public contracting expertise that effectively meets the needs of all Public Works Business Areas.

PCAM also ensures that Public Works adheres to the directives of the Board of Supervisors by upholding responsible and equitable contracting practices, while also supporting regional economic development through targeted business outreach and job creation.

Optimize Performance and Operations

Public Works focuses on maintaining a skilled and technical workforce capable of developing resilient and sustainable infrastructure and providing essential services that meet the needs of all Los Angeles County communities.

PCAM's ability to cultivate technical skills is necessary for the Agency to maintain and enhance its core internal support system, and to ensure public trust, customer satisfaction, and optimal delivery of infrastructure projects and services. As such, the Agency is committed to providing the education, training, and technology required to advance as an industry leader for technical services; meeting current and future infrastructure challenges due to the impacts of climate change; promoting innovation; and providing essential services to the communities we serve.



County Contracting Services

Public Works manages a comprehensive, full-service contracts operation to meet service and construction-related contracting needs throughout the County. The Agency also develops and manages multiple contract-related programs designed to promote equitable opportunities for economic development, job creation, and engagement with local communities and businesses.

Asset Management

Public Works administers real property management services for the County; supports land development and land rights activities; maintains 156 County-owned facilities; and provides specialized trades services for buildings, dams, pump stations, and other flood control and water conservation infrastructure throughout Los Angeles County.

In addition, the Agency is responsible for enhancing public safety and the quality of life for the people of Los Angeles County by providing state-of-the-art traffic operations and maintenance services, including traffic signals, streetlights, and pavement preservation.

**1st Quarter
FY 24-25**
(All Districts)

Contracts Awarded:



Nearly
\$251M

Over
\$14M
To Small Businesses

Jobs Created:
3,119

Public Works maintains
156
County-owned field facilities.
This quarter, technical and trades staff completed over 427 work orders for maintenance, repairs, and special projects.



KEY ISSUES/CHALLENGES

- Providing ongoing training and education opportunities to the large and diverse Public Works technical staff.
- Reducing competition with outside service providers and increasing in-house services through career development and positive customer experience.
- Recruiting and retaining licensed professional surveyors due to the statewide shortage.
- Competition with other departments and agencies to retain trained staff.
- Managing County-owned facilities and other assets that require ongoing maintenance and preservation, while addressing emerging issues related to climate change.
- Implementing mandated initiatives from the Board of Supervisors to advance equity in County contracting, support local small and underutilized businesses, and promote regional job creation that are continuously compounding and evolving.

STRATEGIES

- **Optimized Service Delivery**
 - Provide specialized technical services and strive to cultivate a highly skilled workforce to support projects and services for Los Angeles County residents and businesses.
 - Support and/or offer certification, education, licensing, and training programs to technical staff.
 - Deliver innovative technical services on time and on budget to increase satisfaction with internal and external customers.
- **Equitable County Contracting Practices**
 - Commit to the implementation of practices and Board priorities that increase equitable opportunities in the region, while fulfilling all contracting needs for Public Works projects and services.
 - Successfully implement County programs that create opportunities for local businesses and the community workforce, while efficiently meeting all contracting needs.
- **Optimized Asset Managements**
 - Maintain optimum functionality at the Public Works Headquarters campus and field facilities, which are critical to the delivery of services and projects throughout Los Angeles County.
 - Develop plans and programs to reinvest in Public Works facilities to improve service delivery and increase preventative maintenance projects that support the sustainability of assets and contributes to financial health.

STRATEGIES STATUS (FIRST QUARTER: JULY–SEPTEMBER 2024)

Strategy: Optimized Service Delivery

1. Public Works' technical staff responsible for internal support services are collaborating to create dashboards that will enhance tracking of budgets, expenditures, and schedules, enabling more effective reporting on the efficiency of in-house technical services. The development of these dashboards is expected to be completed by the second quarter and future reports will incorporate related metrics.
2. During this performance period, technical staff participated in conferences hosted by the American Public Works Association (Public Works Expo), Cal Poly Pomona (Geomatic Conference), and Esri (Users Conference) to expand expertise in the areas of design, geotechnical engineering, GIS, and infrastructure delivery. Additionally, Public Works utilized its attendance at the Geomatic Conference to engage with attendees about available surveyor positions to address the ongoing shortage in that field.

Strategy: Equitable County Contracting Practices

1. Public Works actively participated in three business outreach and development events in alignment with our commitment to creating equitable contracting opportunities for underutilized businesses. These events reached approximately 600 attendees, provided information and resources on how to do business with Public Works, and took place in partnership with various agencies, including Board offices, the Department of Economic Opportunity, the Internal Services Department, LA Metro, and the Black Business Association. Advertisements for these events reached nearly 34,000 people/businesses who have expressed interest in County contracting.
2. The Agency is dedicated to promoting equity in contracting by implementing key programs aimed at supporting individuals facing barriers to employment in Los Angeles County and empowering small and historically underutilized businesses with the knowledge and resources to compete for contracting opportunities. These programs include the Countywide Community Workforce Agreement, the Local and Targeted Worker Hiring Program, and the Contractor Development and Bonding Assistance Program. During this reporting period, Public Works has also increased staffing resources to enhance support for these initiatives.
3. Public Works is in the process of developing a web-based tool to collect data on interest in County contracting and improve tracking of submitted bids and awarded contracts. This tool will facilitate the assessment of vendor diversity, allowing for informed decisions to boost the participation of small and historically underutilized businesses.

Strategy: Optimized Asset Management

1. Public Works continues to prioritize the safety, functionality, and sustainability of our facilities. This quarter, we successfully completed 10 renovation projects, including major parking lot improvements and a new lactation room for mothers at the Headquarters campus, and various upgrades at one field office and three field yards.
2. The Agency has identified over 18,000 facility preventative maintenance projects to be completed in fiscal year 2024-25, with the majority of those projects completed in this reporting period.
3. Public Works is committed to enhancing its management of traffic control assets by holding regular meetings and engaging with contract cities to share best practices in maintenance and operations. In this quarter, Public Works met with the City of Rolling Hills Estates to discuss improving responsiveness, enhancing customer experience, and exploring additional services to boost the city's roadway safety.
4. To enhance its asset management capabilities, Public Works has implemented a cutting-edge, GIS-centric program called CityWorks. This innovative tool will transform how the Agency manages its facilities and infrastructure assets. This quarter, the focus has been on optimizing service delivery and facilitating the implementation of CityWorks by offering staff opportunities to obtain GIS certification, empowering them to fully leverage the system's functionalities.

RESULTS-BASED ACCOUNTABILITY: SUMMARY

Population Accountability

Population Outcome: Public Works is a center of excellence for modern infrastructure design, technical services, asset and property management, mapping services and public contracting.				
Population Indicators	Current Value	Current Reporting Period	Previous Value	Previous Reporting Period
Percentage of technical services delivered on time and on budget*	N/A	N/A	N/A	N/A
Percentage of construction contracts that meet or exceed mandatory hiring goals	81%	July-September 2024	81%	April-June 2024
Percentage of scheduled and budgeted facility maintenance and renovation projects completed each Fiscal Year**	41%	FY 2024-25	N/A	N/A

*New Population Indicator and reporting will begin in Q2 for "on time" and Q3 of FY 2024-25 for "on budget" related metrics. Please note that there are no previous values or reporting periods.

**New Population Indicator; there are no previous values or reporting periods.

Performance Accountability

Strategy 1: Optimized Service Delivery					
Performance Measures** (July - September 2024)	Current Actual Value	Previous Value	Current Target Value	Current Trend	Baseline % Change
Percentage of customer feedback responses receiving positive rating.	100%	N/A	100%	N/A	N/A
Number of projects submitted for recognition by industry partners	6	N/A	2	N/A	N/A
Percentage of project submissions receiving awards	17%	N/A	100%	N/A	N/A
Vacancy rate (percentage) for technical positions in the Business Areas	9%	N/A	12%	N/A	N/A
Percentage of technical staff who are eligible for a professional license or certification and actively pursuing licensure	37%	N/A	100%	N/A	N/A

Strategy 2: Equitable County Contracting Practices

Performance Measures (July - September 2024)	Current Actual Value	Previous Value	Current Target Value	Current Trend	Baseline % Change
Percentage of construction projects in compliance with mandatory hiring goals	80%	N/A	100%	N/A	N/A

Strategy 3: Optimized Asset Management

Performance Measures** (July - September 2024)	Current Actual Value	Previous Value	Current Target Value	Current Trend	Baseline % Change
Percentage of scheduled and budgeted facility upgrade projects completed each Fiscal Year	23%	N/A	100%	N/A	N/A
Percentage of scheduled and budgeted preventative maintenance work completed each Fiscal Year	41%	N/A	100%	N/A	N/A

** Starting in Q1 of FY 2024-25, Public Works will begin reporting on these new Performance Measures. Please note that there are no previous values; reporting on trends and baseline changes will begin Q2 of FY 2024-25.

KEY TAKEAWAYS

- The PCAM Business Area has updated its business plan to introduce new metrics for reporting starting fiscal year 2024-25, while phasing out previous metrics that were no longer effective in evaluating our strategies and addressing emerging challenges. The revised plan aims to enhance strategic alignment and support ongoing growth and success in achieving Agency goals.
- The Population Indicator that measures the percentage of scheduled and budgeted facility maintenance and renovation projects completed each fiscal year will display the “Current Value” as the cumulative total for the year, while the “Previous Value” will show the percentage for the quarter. This format enables Public Works to demonstrate both overall progress toward the 100 percent target and the incremental advancements made each quarter.



Municipal Services

"Creating vibrant communities that are safe and resilient in unincorporated Los Angeles County."



2,300 subdivision improvement plans reviewed annually

14,778 building permits valued at \$2.0 billion issued annually



MAJOR PROGRAMS/SERVICES

Public Works' Municipal Services Core Service Area (CSA) is responsible for the development of safe, sustainable, and resilient communities. As such, the CSA provides programs and services that enable sustainable and resilient developments, environmental protection, social equity, quality of life, and economic development within Los Angeles County. Services provided include efficient project entitlement, permitting, and inspection of residential, industrial, and commercial developments; code enforcement and property rehabilitation programs; graffiti abatement services; initiatives to bridge the digital divide; and administration of the Office of Oil and Gas.

Municipal Services CSA also enhances housing and community development by advancing affordable housing for low-income communities and persons experiencing homelessness. Additionally, Municipal Services CSA safeguards Los Angeles County communities by preparing for and responding to daily incidents; supporting County emergency operations during major emergencies and disasters; and collaborating with first responders, such as Sheriff, Fire, and Office of Emergency Management, to provide outreach on emergency preparedness and community resiliency.

Land Development

Public Works, in partnership with the Department of Regional Planning, provides streamlined land development services on California Environmental Quality Act document reviews, entitlements, permitting, inspection services, and permit approvals for customers. This is made possible with the online enterprise plan checking system – EPIC-LA. Each year, approximately 2,300 subdivision-related plan reviews are performed, and 290 new subdivision maps are recorded. During the first quarter of Fiscal Year 2024-25, 585 subdivision-related plan reviews were performed and 64 new subdivision maps were recorded. In addition, Public Works provides land development and County Surveyor services for 42 cities through contract city services.

Permits and Inspection

Public Works is also responsible for the enforcement of building regulations for public and private buildings and operates at ten regional permit offices providing building permit and inspection services. An estimated 14,778 building permits with a valuation of \$2.0 billion are issued annually and made available online via Public Works' interactive "Building Permit Viewer" website. At the end of the first quarter of Fiscal Year 2024-25, there were 3,687 building permits issued with a valuation of approximately \$416 million. This first quarter data shows a continuing productive trend with building permit applications within unincorporated County increasing 28 percent overall, compared to the same quarter of Fiscal Year 2018-19 pre-pandemic levels.

This significant increase indicates the continuing strong construction market. Of the permits issued during the first quarter of Fiscal Year 2024-25, there were 1,135 solar permits issued, which yields an estimated yearly energy production of 24,537,570 kWh. This amount of solar energy is roughly the equivalent of 3,747 passenger vehicles removed from the road per year. In addition to online permit services, Public Works provides building official services for 11 cities through contract city services.

Public Works is also responsible for providing permit and inspection services for general construction, transportation, filming, and other activities within unincorporated County public rights-of-way and other activities affecting Los Angeles County Flood Control District facilities and right-of-way, including underground confined space inspection services for storm drain facilities. Public Works also provides permit and inspection services in city public rights-of-way for three contract cities and transportation permit issuance for 21 contract cities. Approximately 3,885 road/flood encroachment and transportation permits were processed and over 8,996 inspections were performed based upon the data collected during the first quarter of Fiscal Year 2024-25.

Homelessness and Housing

Public Works is dedicated to ensuring safe and sustainable communities for all. This is achieved in many ways, including collaboration on interim housing projects for persons experiencing homelessness (PEH), the inspection and assessment of shelters and interim housing during emergencies or severe weather events, and for projects such as Project RoomKey, which is focused on the most vulnerable populations and PEH. Public Works also provides project management services on interim and permanent supportive housing projects for PEH, such as Project HomeKey, and expediting the process for affordable housing, and the granting of certificates of occupancy. At

the end of the first quarter of Fiscal Year 2024-25, there were 2,558 residential building permits finalized which enabled housing occupancy.

County Garage Conversion Accessory Dwelling Unit Program

Adaptive reuse is a concept used as early as the 1970's for the process of repurposing existing buildings to encourage sustainable development through conversion while minimizing reconstruction and demolition waste. In response to the Board of Supervisors' (Board) Emergency Declaration to alleviate the housing crisis, Public Works is currently promoting adaptive reuse of existing garages into new Accessory Dwelling Units (ADU) through an expedited permit processing using standardized sheets, pre-construction meetings, and construction guide. During the first quarter of Fiscal Year 2024-25, there were approximately 97 garage conversion submittals received for permitting.

Express Permits

To further assist constituents needing simple permits where the project will not require a plan review, Public Works created a series of online express permits for the categories of mechanical, electrical, plumbing, sewer, and solar. This process allows hundreds of applicants to instantly receive permits 24/7, once the fees are paid, while ensuring the proposed work is inspected to ensure building code compliance.

Code Enforcement and Property Rehabilitation Program

Public Works performs code enforcement activities related to property maintenance to improve public safety and quality of life in unincorporated communities. Program staff respond to complaints and investigate and resolve public nuisance, unsightly property conditions, or unpermitted construction issues within a community. Based upon data collected at the end of the first quarter of Fiscal Year 2024-25, there were 92 new code enforcement cases, 163 new property rehabilitation cases, and 125 Nuisance Abatement Team cases.

The Nuisance Abatement Team cases typically include County regulation violations enforced by the Departments of Regional Planning, Health Services, Fire, and Animal Care & Control and require the assistance of a multiagency Task Force, including County law enforcement and the District Attorney's Office for enforcement actions. In addition, Public Works performs code enforcement activities related to private property, on a complaint basis, to investigate and resolve unpermitted construction.

Building and Safety services to

11 Cities

8 million square feet of graffiti removed per year by Public Works.

Land Development services to

42 Cities

Graffiti Abatement

Public Works administers the County's Graffiti Abatement Program, which is tasked with the removal of graffiti in the unincorporated areas of the County and Flood Control District channels. The Program also includes an outreach component to encourage communities to report graffiti. At the end of the first quarter of Fiscal Year 2024-25, Public Works abated 29,066 graffiti tags throughout the County, to promote safe and sustainable communities.

Community Services

Public Works engages with over 125 unincorporated communities to address specific needs and issues in the communities and improve quality of life. Public Works employs Community Liaisons who are tasked with working directly with town councils, homeowner associations, community groups, the Board office, and constituents. During the first quarter of Fiscal Year 2024-25, Public Works attended 89 community meetings within all five Supervisorial Districts, to enhance partnerships, transparency, and public trust in the diverse communities.

Public Works also provides municipal services to incorporated cities within Los Angeles County. Through a General Service Agreement, cities contract services to utilize Public Works' skilled workforce, ample resources, service convenience, and emergency response. Community Liaisons are assigned to each city to act as City Service Liaisons for contract work, capital project coordination, and to advance Public Works' regional strategic goals. During the first quarter of Fiscal Year 2024-25, Public Works completed 54 City Service Requests for 20 cities in Los Angeles County.

Special Assessment Districts

Public Works manages 26 Landscape Maintenance Districts across the County with most of the zones in Supervisorial District 5, a few in Supervisorial District 1, and one in Supervisorial District 3. A robust community engagement plan is being prepared to collaboratively discuss maintenance levels of service and potential fee increase options with residents. The engagement plan will utilize door hangers, constituent surveys, and hybrid community meetings to achieve financial stability in each of the impacted zones. A hybrid community meeting was held on September 16 for Landscape Maintenance District Zone 21 Sunset Pointe.

Public Works manages 11 Drainage Benefit Assessment Areas (DBAA) located in the Antelope Valley. Out of the 11 DBAAs, 7 have landscaping and irrigation, and 4 have weed abatement and litter control performed.

County Improvement Districts

Public Works administers the County Improvement Districts Program. California Streets and Highway Code allows for the formation of County Improvement Districts and issuance of assessments levied upon properties with the improvement district to finance the construction or installation of public infrastructure, such as a new water or sewer line, or a conversion of a private street to a public street. The Program is currently exploring projects including the Top of Topanga septic to public sewer conversion and Shrode Avenue private to public street conversion feasibilities

Office of Oil and Gas

The Office of Oil and Gas (Office) was created to allow the County to be informed about existing oil and gas operations and ensure coordination to promote better public and environmental health. The Office, in coordination with the California Geologic Energy Management Division (CalGEM), the Chief Sustainability Office, and the County Departments of Regional Planning, Public Health, and Fire - Health HazMat, developed a framework to plug and abandon idle oil wells, with the goal of improving environmental conditions for frontline communities. The Office also created a website (<https://oilandgas.lacounty.gov>) to provide information on pending legislation, the regulatory framework, and current events, as well as provide an electronic form for members of the community to submit their concerns related to oil or gas facilities. A new Oil and Gas Well Geographic Information System Dashboard is now available on the website to view and access data on wells located in Los Angeles County. The Office is in coordination with CalGEM to permanently plug and abandon six orphan wells in the unincorporated West Hills as part of the State's Oil and Gas Well Abandonment Expenditure Plan.

In response to a September 2021 motion by the Board, the Department of Regional Planning prepared an ordinance to amend Title 22 to prohibit new oil wells and production facilities in all zones, designate existing wells and production facilities as nonconforming uses in all zones, and establish regulations for existing oil wells and production facilities. The ordinance applies to unincorporated areas except for the Baldwin Hills Community Standards District, areas designated as a specific plan, and uses operating under a valid discretionary permit. On January 24, 2023, the Board adopted the Oil Well Ordinance, which became effective on February 23, 2023. On May 14, 2024, the Board approved an amendment to the Baldwin Hills Community Standards District to be consistent with the Countywide Oil Well Ordinance.

In addition, the Chief Sustainability Office responded to another September 2021 Board motion to implement the recommendations outlined in the initial Just Transition Strategy report, such as expanding the Stakeholder Taskforce to be inclusive of frontline and tribal communities, identifying and addressing key data gaps, including the demographics of fossil fuel workers and economics of the fossil fuel industry in the County, to inform a Just Transition Strategy, and report back to the Board on updates. The latest report, which presented the completed Just Transition Strategy, was submitted to the Board on December 5, 2022.

The motion also directed the Chief Executive Officer (CEO) to explore options to increase revenue dedicated to the ongoing implementation of the Just Transition Strategy, including relevant State and federal funding sources.

Fire Recovery Efforts

In recent years, wildfires have occurred at an unprecedented scale and frequency. Public Works supports the fire response by assisting with road clearing, water sources, building assessments, and incident command. Following the fires, Public Works coordinates with County, State, and Federal agencies to expedite the removal of hazardous debris to prevent contamination of soil and surface waters. Public Works evaluates and maps debris flow hazards, provides engineering advice to residents, and participates in a unified command to protect communities during storms. Additionally, Public Works supports communities throughout their recovery. This includes emergency projects to restore infrastructure and utilities, improve flood control systems, and streamlining the permit processes for the repair and rebuilding of homes and businesses.

Resilient Construction

Pursuant to Chapter 7A of the Building Code, Public Works is ensuring new buildings, and any additions, alterations or repairs made to existing buildings located within any Fire Hazard Severity Zone, are now constructed with materials and construction methods to be resilient against future fires.

Building Code Adoption

The State of California adopts updated Building Standards Codes every three years, and pursuant to that schedule, the updated California Building Standards Codes was implemented on January 1, 2023, in the form of the 2023 Los Angeles County Building Codes. Los Angeles County conducted outreach to stakeholders and worked in concert with other regional jurisdictions to amend the State code to address construction-related concerns specific to the Southern California region. Many of the amendments establish critical structural design requirements that make buildings more resilient to wildfires and potentially severe earthquakes in Southern California. Public Works also ensured incorporation of amendments in support of the County Sustainability Plan.

Code Enforcement – Sacred Oaks Ranch

There have been ongoing code enforcement efforts at this 52-acre undeveloped parcel, which was used as a permanent residential camp by multiple families, including livestock and cock-fighting activity. The site was found to have approximately 15 to 20 unpermitted structures and unpermitted grading, plumbing, electrical, and sewage on the site; and appeared to be used by several families with children. The Building Rehabilitation Appeals Board ruled that all violations must be mitigated by April 27, 2021. The property owner and their representatives continue to be responsive in cleaning up the site with their own means. As of January 2023, Sacred Oaks has reached substantial compliance with the removal of all unpermitted structures and outside junk and storage violations. Public Works will continue assisting the District Attorney and Department of Regional Planning on Code compliance.

Newhall Ranch – Mission Village

The ongoing efforts by Public Works on this project include:

- Bi-weekly meetings with FivePoint’s executive team to discuss high-level workflow and staffing issues.
- 37 total units have been permitted for single-family residences and multi-family buildings in the first quarter of Fiscal Year 2024-25.
- 1,044 and 1,697 total permits and units have been issued for single-family residence and multi-family buildings.
- Collaboration with the Treasurer and Tax Collector and County Counsel to acquire and transfer community facilities district (CFD) facilities, with a valuation of \$1.24 billion, financed by a CFD, to the County and Flood Control District.

Emergency Management

Public Works assists the CEO’s Office of Emergency Management with Countywide emergency planning and preparedness activities, is a member of the County Emergency Management Council, and serves as lead of the Construction and Engineering Branch of the County Emergency Operations Center. Public Works also operates and maintains a Department Operations Center (DOC) to manage local emergency responses and support County emergency operations during major emergencies and disasters. The DOC was activated in response to the Bridge Fire on September 11, 2024, and was deactivated on September 16, 2024. Public Works assisted partner agencies

Public Works’ Response Costs* for Recent Disaster Events:

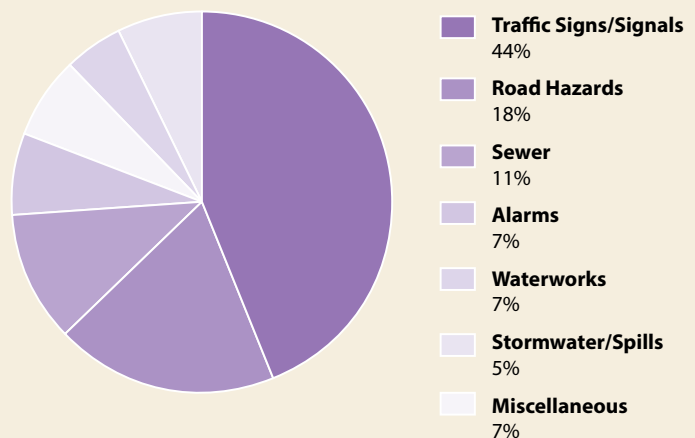
2022 Tropical Storm Kay	\$4.7M
2023 Winter Rainstorms	\$137.5M
2023 Tropical Storm Hillary	\$2.6M
2024 Early February Rainstorms	\$36.7M

** Documented costs for Public Works’ response phase activities for declared emergencies only. Recovery and mitigation costs are not included.*

PUBLIC WORKS DISPATCH SERVICES



Analysis of Fiscal Year 2022-2023 Dispatch Calls, excluding graffiti reports



24/7
Hours Days
per week

50,000
Calls Per Year

COMMUNICATION SYSTEMS
Telephone / Radio / Electronic

ALARM SYSTEM MONITORING



Public Works Department Operations Center (DOC)

with road closures, clearing debris on County roadways, and conducting building inspections, as appropriate.

Public Works Dispatch Center

Public Works operates a Dispatch Center and hotline (1-800-675-HELP) 24 hours-a-day, 7-days a week, which coordinates nearly 60,000 service and emergency calls annually. This includes reports regarding graffiti, potholes, hazmat spills, water service disruptions, illegal dumping, sewer overflows, damaged signs, and malfunctioning traffic signals. The Dispatch Center also assists in coordinating the efforts between Public Works field crews and law enforcement or other safety responders. Road closures for County-maintained roads are posted at: pw.lacounty.gov/rmd/roadclosures and Traffic signal incidents at: pw.lacounty.gov/OSD/TrafficSignalIncidents/.

County Building Evaluation Team (CBET)

A comprehensive emergency response plan has been developed, in partnership with the CEO and Internal Services Department, which includes processes on the prioritization and evaluation of County buildings in the event of a major emergency, such as a major earthquake, tsunami, or extensive flooding. Public Works is tasked with evaluating the structural integrity of all County buildings. Following the earthquake on August 12, 2024, Public Works personnel were dispatched to conduct a structural evaluation of various County facilities. In addition, Public Works personnel conducted trainings and will continue to conduct exercises to ensure appropriate staff are familiar with the County Building Evaluation Team (CBET) Plan and further test earthquake preparedness and response.

Safety Assessment Program (SAP)

Public Works is an active participant in the State of California's Safety Assessment Program (SAP) which provides professional engineers, architects, and certified building inspectors to assist local governments in safety evaluations of the built environment in the aftermath of a disaster. Managed by the California Governor's Office of Emergency Services (Cal OES), SAP brings together volunteers, professional organizations, and mutual aid resources. By training and certifying our own staff as SAP evaluators, Public Works continues to strengthen our workforce and provides the ability for SAP to respond to major disasters.

Continuity of Operations (COOP) Plan

The Continuity of Operations Plan (COOP) identifies essential functions and processes that must be continued or rapidly resumed after disruption of normal activities. Public Works analyzed over 150 processes and prioritized their value to protect critical infrastructure, life, and property. The COOP identifies the resources needed to restore essential processes



and ensure that the fundamental responsibilities of Public Works are executed during responses to emergencies or disasters.

KEY ISSUES/CHALLENGES

The well-being and safety of our communities and workforce

- Provide outreach and engagement with the development community and permit applicants, to increase their understanding of the processes and best practices for sustainability, resiliency, and quality of life.
- Improve and simplify processes for permitting, to be more customer-friendly and efficient, while ensuring safety and code compliance.
- Improve collaboration among permitting departments for a concerted submittal review process to address customer needs, resiliency, and recovery after disasters.
- Adopt methods to quickly and flexibly adjust staffing levels to accommodate economic changes, customer demand, and emergency incidents.

Guiding and ensuring modern infrastructure that uplifts all communities

- Ensure equity in program plans and services, particularly in underserved and unfinished communities.
- Develop and strengthen strategic relationships, including opportunities for collaboration, community input, and stakeholder engagement.
- Increase dwelling units across the unincorporated County, including affordable housing and ADUs.
- Take actions to address the crisis of PEH, such as measures focused on interim and affordable housing and safe, clean communities.

- Bridge the digital divide through initiatives to ensure broadband infrastructure development and equitable access to broadband.

The preparedness of our Public Works community and the community at large

- Increase workforce awareness of operational authority and available resources to facilitate efficient enterprise-wide emergency responses and recovery efforts.
- Build community resilience and educate our at-risk unincorporated residents on emergency and disaster preparedness information through meaningful community outreach and engagement.
- Promote community awareness of available services and resources provided by Public Works, particularly in the context of emergency management and related municipal services.
- Develop and strengthen strategic relationships and collaborative opportunities to support situational awareness, regional preparedness, response efficiency, and recovery and resiliency efforts.
- Support preparation for emerging social, environmental, health, and technology issues, recognizing the interplay between these issues and their implications for emergency management.

STRATEGIES

Accelerate Housing

An essential element of vibrant, safe, and resilient communities is the availability of housing throughout the region. Increasing the number of dwelling units and housing projects awarded certificates of occupancy is an important measure of success, along with the timeliness and responsiveness of the permitting process, designed to be customer-friendly and efficient, while ensuring safety, code compliance, and equity across the County.

Actions include:

- Improving processes and workflows to enhance the customer experience
- Streamlining permitting
- Targeting educational outreach for stakeholders, including communities and the industry

Increase the State of Readiness and Community Preparedness

Public Works is responsible for a wide variety of critical infrastructure and services, which directly support the communities and economy of Los Angeles County. Any major disruptions to our critical infrastructure and services can have catastrophic impacts to our region, resulting in loss of life and property. Public Works prioritizes preparedness, response, recovery, and mitigation for all hazards. This involves comprehensive and mandated training for Public Works' personnel and collaboration with our strategic partners to help inform and educate our communities to better prepare for any hazard. Ensuring our state of readiness for Public Works and the communities we serve is fundamental to vibrant, safe, and resilient communities.

Actions include:

- Ensuring compliance with State and Federally mandated emergency management trainings.
- Participating in and hosting emergency management exercises to test readiness and preparedness.
- Participating in community workshops, educational series, and events to support engagement on emergency-related issues including climate resiliency.
- Completing After-Action Reports and assessing opportunities for improvements.

STRATEGY STATUS (FIRST QUARTER: JULY - SEPTEMBER 2024)

Strategy: Accelerate Housing

1. Public Works continues to provide expedited services for projects that have an affordable housing component or provide affordable housing stock in other ways, such as ADUs, that may positively impact PEH.
2. Public Works continues to collaborate with the Departments of Regional Planning, Fire, and Public Health to provide coordinated reviews and inspections, with a target to increase the number of permits and certificates of occupancy issued.
3. Public Works is engaged in internally examining streamlined permitting processes and workflows to improve turnaround times on customer submissions; and externally educating and engaging stakeholders to enhance the customer experience.

Strategy: Increase the State of Readiness and Community Preparedness

1. Public Works participated in numerous outreach events to educate Los Angeles County residents on emergency preparedness for all hazards, including earthquakes, fires, and floods. Public Works participated in the following events: Resource Fair at the unveiling of Richard Haro's Mural hosted by Supervisor Solis' East Los Angeles Office, National Night Out at Peter F. Schabarum Regional Park hosted by Supervisor Solis' Office, and Fire Safety Fair hosted by Malibou Lakeside Fire Safe Council. Public Works also utilized the Safety Awards ceremonies as a platform to share preparedness resources to our personnel.
2. Public Works continued to take proactive steps to prepare for emergencies by participating in tabletop exercises and educational seminars. Public Works participated in the Major Flood Tabletop exercise hosted by the City of Norwalk. The Major Flood Tabletop exercise discussed operation priorities, public safety considerations, and recovery support activities in the first 48 hours after a catastrophic event in the City of Norwalk and surrounding communities. Public Works conducted a tabletop exercise to test and discuss CBET procedures outlined in the CBET manual. In addition, Public Works attended various educational seminars, such as the Disaster Expo USA and the Listos Regional Disaster Ready summit. These educational seminars are aimed at gathering industry leaders in emergency management to network and build relationships, discuss and learn problem-solving tools to address gaps in disaster preparedness, and receive disaster preparedness information and resources. By attending these tabletop exercises and educational seminars, Public Works gained valuable knowledge about the efforts and resources offered by our partner agencies and helped improve our situational awareness and strengthen communication and coordination during large-scale emergencies or special events across the Los Angeles region.
3. Public Works has continued a social media campaign to increase public awareness by sharing emergency and preparedness information and resources regarding extreme heat preparation, wildfire prevention, and flooding.
4. Public Works engaged and worked with an on-call consultant to update our existing COOPs. The updated draft COOP Division Annex Plans and Base Plans are anticipated to be completed by the end of September 2024. Public Works and the on-call consultant are expected to coordinate a department-wide COOP Tabletop exercise by late fall 2024 and finalize the COOP Division Annex Plans and Base Plans upon completion of the Tabletop exercise.
5. Public Works has continued participation as members of the Los Angeles County Fire Department Urban Search and Rescue (USAR) Team as California Task Force 2 (CA-TF2). There are currently seven Public Works engineers serving as Structures Specialists on the USAR Team.

RESULTS-BASED ACCOUNTABILITY: SUMMARY

Population Accountability

Population Outcome: Creating vibrant communities that are safe and resilient in unincorporated Los Angeles County.				
Population Indicators	Current Value	Current Reporting Period	Previous Value	Previous Reporting Period
Percent of housing demand met annually*	18%	October 1, 2023 – September 30, 2024	16%	July 1, 2023 – June 30, 2024
Number of unincorporated communities provided emergency preparedness outreach annually	2	July 1, 2024 – September 30, 2024	1	July 1, 2023 – June 30, 2024

* Includes all housing units finalized within unincorporated LA County.

Performance Accountability

Strategy 1: Accelerate Housing					
Performance Measures (July – September 2024)	Current Value	Previous Value	Current Target Value	Current Trend	Baseline % Change
Number of dwelling units based on building permits finalized and/or certificates of occupancy issued*	698	429	2,814	↑	63%
Average building plan check turnaround times (calendar days)	13	15	30	↓	13%
Average development improvement plan check turnaround times (calendar days)	25	28	30	↓	11%
Number of customer service feedback	620	412	200	↑	50%

* Baseline established by the County's 2021-2029 Housing Element ([link](#)) to meet regional housing needs of 90,052 units within the unincorporated LA County in 8 years period broken down by 4 quarters per year $[90,052 / (8 * 4) = 2,814]$.

Strategy 2: Increase State of Readiness and Community Preparedness

Performance Measures (July – September 2024)	Current Actual Value	Previous Value	Current Target Value	Current Trend	Baseline % Change
Number of community preparedness outreach events serving at-risk communities, per quarter	6	7	3	↓	14%
Number of residents engaged during community preparedness outreach events, per quarter	500	700	150	↓	28%
Number of Public Works personnel participating in Emergency Management trainings**	268	259	144	↑	3%
Number of targeted training exercises and educational seminars attended, per quarter	4	5	2	↓	20%

** Minimum number of trained Public Works Personnel required to support activities in the DOC.

KEY TAKEAWAYS

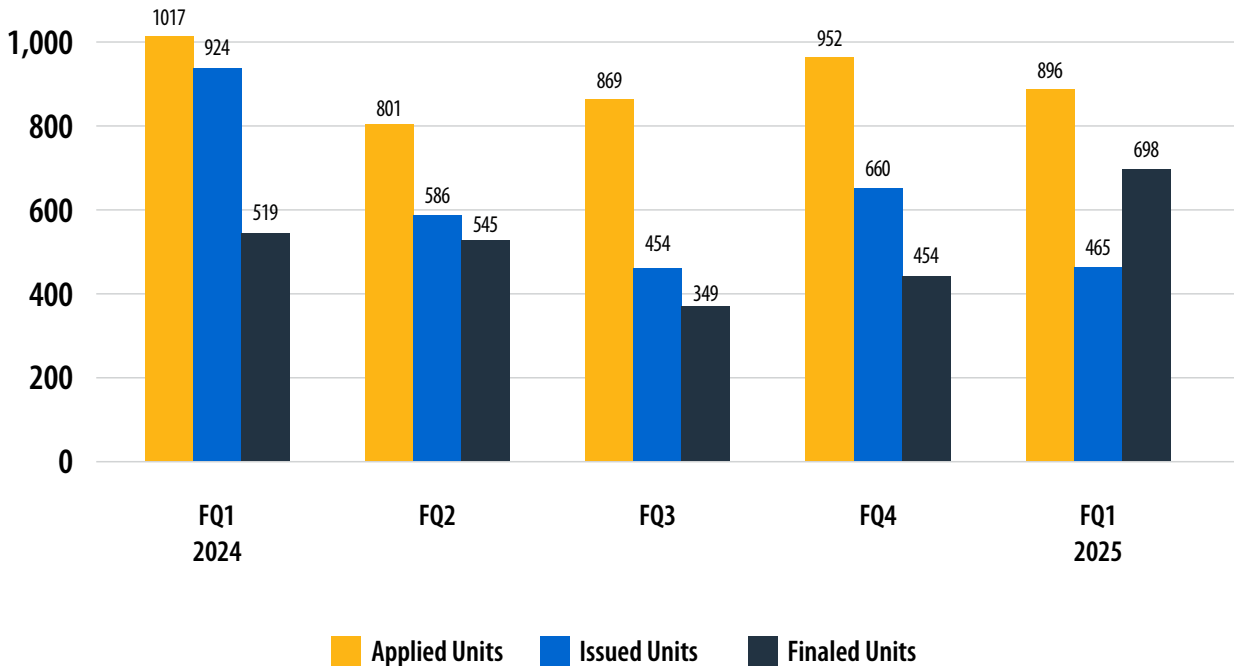
Increase State of Readiness and Community Preparedness

- Public Works attended and will continue to attend various community outreach and engagement events and conduct meaningful engagement with our at-risk unincorporated community residents on emergency preparedness for all hazards.
- Public Works personnel participated and will continue to participate in tabletop exercises and other educational seminars to strengthen communication, coordination, and collaboration with our strategic partners to support situational awareness, regional preparedness, and response and recovery efforts.
- Public Works is appropriately staffed in each branch under the Standardized Emergency Management System, National Incident Management System, and Incident Command System structures, and in compliance with mandated emergency management trainings.
- Public Works continues to collaborate with our strategic partners through Unified Coordination Group calls for new and ongoing incidents, such as the Portuguese Bend Landslide, Chiquita Canyon Landfill, Post Fire, and Bridge Fire incidents.

Accelerate Housing

- To meet regional housing needs, Public Works has developed several express permits for mechanical, electrical, plumbing, sewer, and solar applications, which allows the agency to focus efforts on being responsive to developers and support the unincorporated Los Angeles County areas as being the area of choice for housing development.
- Public Works continually trains staff to maintain and improve upon quality first-round plan check turnaround times.
- Public Works has developed new processes and standard plans for garage conversions to ADUs and Junior ADUs.
- Public Works is collaborating with the Department of Regional Planning to establish a process to streamline ADU/Junior ADU standard plan approvals.

EPIC-LA Housing Units Dashboard





Appendix 1

Services Provided to Cities

VIA Agreement

Los Angeles County Public Works Services Provided To Cities (Via Agreement)

SD1

	Bridge Inspection and/or Maintenance	Building & Safety	Storm Drain Catch Basin Clean Out	Storm Drain Catch Basin Insert Maintenance (County Flood Control Catch Basins)	City Pump Station	Street Maintenance	Industrial Waste	Permit Issuance & Inspection (Transportation)	Consolidated Sewer Maintenance District	Safe, Clean Water Program	Sewer Maintenance Contract	Street Lighting Maintenance District	Subdivision Maps: Final	Subdivision Maps: Tentative	Traffic Advisor	Traffic Operations Services	Traffic Signal Maintenance	Traffic Signal Maintenance – Shared Intersections	Underground Storage Tanks	Infrastructure Design Construction	Traffic Monitoring
Alhambra	■									■									■	■	
Azusa	■									■			■					■	■	■	
Baldwin Park	■								■	■								■	■	■	
Covina	■		■							■			■			■	■	■	■	■	■
Diamond Bar	■		■				■		■	■		■							■	■	
El Monte	■							■		■									■	■	
Industry	■	■	■	■	■	■		■	■	■					■	■	■	■	■	■	■
Irwindale	■	■	■				■			■	■							■	■	■	
La Puente	■						■			■						■		■	■	■	
La Verne	■		■				■			■									■	■	
Los Angeles										■								■		■	
Montebello	■									■	■		■			■		■	■	■	
Monterey Park	■						■			■		■						■	■	■	
Pomona	■									■									■	■	
Rosemead	■			■	■		■		■	■								■	■	■	
San Gabriel	■									■			■					■	■	■	■
South El Monte			■						■	■		■							■	■	
Walnut	■		■			■	■	■	■	■		■				■	■	■	■	■	
West Covina	■		■					■		■							■	■	■	■	
TOTAL	17	2	8	2	2	2	7	4	6	19	2	4	4	0	1	5	4	13	18	19	3

Los Angeles County Public Works Services Provided To Cities (Via Agreement)

SD2

	Bridge Inspection and/or Maintenance	Building & Safety	Storm Drain Catch Basin Clean Out	Storm Drain Catch Basin Insert Maintenance (County Flood Control Catch Basins)	City Pump Station	Street Maintenance	Industrial Waste	Permit Issuance & Inspection (Transportation)	Consolidated Sewer Maintenance District	Safe, Clean Water Program	Sewer Maintenance Contract	Street Lighting Maintenance District	Subdivision Maps: Final	Subdivision Maps: Tentative	Traffic Advisor	Traffic Operations Services	Traffic Signal Maintenance	Traffic Signal Maintenance – Shared Intersections	Underground Storage Tanks	Infrastructure Design Construction	Traffic Monitoring	
Carson	■						■	■	■	■		■	■	■		■	■	■	■	■	■	■
Compton	■									■						■		■	■	■		
Culver City	■						■			■			■						■	■		
El Segundo	■							■		■			■				■	■		■		
Gardena	■		■				■			■			■					■	■	■		
Hawthorne	■									■			■				■	■	■	■		
Hermosa Beach										■			■					■	■	■		
Inglewood										■								■	■	■		
Lawndale		■					■	■	■	■		■	■			■	■	■	■	■		
Los Angeles										■								■		■		
Lynwood	■									■			■					■	■	■		
Manhattan Beach										■			■				■		■	■	■	■
Redondo Beach	■									■			■			■	■	■	■	■		
TOTAL	8	1	1	0	0	0	4	3	2	13	0	2	10	1	0	4	6	11	11	13	2	

Los Angeles County Public Works Services Provided To Cities (Via Agreement)

SD3

	Bridge Inspection and/or Maintenance	Building & Safety	Storm Drain Catch Basin Clean Out	Storm Drain Catch Basin Insert Maintenance (County Flood Control Catch Basins)	City Pump Station	Street Maintenance	Industrial Waste	Permit Issuance & Inspection (Transportation)	Consolidated Sewer Maintenance District	Safe, Clean Water Program	Sewer Maintenance Contract	Street Lighting Maintenance District	Subdivision Maps: Final	Subdivision Maps: Tentative	Traffic Advisor	Traffic Operations Services	Traffic Signal Maintenance	Traffic Signal Maintenance – Shared Intersections	Underground Storage Tanks	Infrastructure Design Construction	Traffic Monitoring
Agoura Hills	■						■		■	■		■				■	■	■	■	■	
Beverly Hills							■			■								■	■	■	
Calabasas	■						■		■	■		■						■	■	■	
Hidden Hills									■	■						■		■	■	■	
Los Angeles										■								■		■	
Malibu	■								■	■		■							■	■	
San Fernando	■						■			■										■	
Santa Monica	■									■			■							■	
West Hollywood			■				■			■	■		■				■		■	■	
Westlake Village	■	■		■			■		■	■						■	■		■	■	
TOTAL	6	1	1	1	0	0	6	0	5	10	1	3	2	0	0	3	3	5	7	10	0

Los Angeles County Public Works Services Provided To Cities (Via Agreement)

SD4

	Bridge Inspection and/or Maintenance	Building & Safety	Storm Drain Catch Basin Clean Out	Storm Drain Catch Basin Insert Maintenance (County Flood Control Catch Basins)	City Pump Station	Street Maintenance	Industrial Waste	Permit Issuance & Inspection (Transportation)	Consolidated Sewer Maintenance District	Safe, Clean Water Program	Sewer Maintenance Contract	Street Lighting Maintenance District	Subdivision Maps: Final	Subdivision Maps: Tentative	Traffic Advisor	Traffic Operations Services	Traffic Signal Maintenance	Traffic Signal Maintenance – Shared Intersections	Underground Storage Tanks	Infrastructure Design Construction	Traffic Monitoring	
Artesia		■					■		■	■			■							■	■	
Avalon																				■	■	
Bell	■									■										■	■	
Bell Gardens	■						■		■	■		■	■							■	■	
Bellflower	■						■		■	■										■	■	
Cerritos	■	■					■	■		■								■		■	■	
Commerce	■						■	■	■	■			■	■		■		■		■	■	
Cudahy	■						■		■	■			■							■	■	
Downey	■									■										■	■	
Hawaiian Gardens	■		■				■		■	■								■		■	■	
Huntington Park	■									■			■					■		■	■	
La Habra Heights	■		■						■	■							■			■	■	
La Mirada	■	■	■				■	■	■	■		■	■	■	■	■	■	■	■	■	■	
Lakewood	■	■					■	■	■	■			■	■	■	■	■	■	■	■	■	
Lomita		■					■	■	■	■		■	■	■	■					■	■	■
Long Beach	■							■		■								■			■	
Los Angeles										■								■			■	
Maywood	■									■	■									■	■	
Norwalk	■						■			■										■	■	
Palos Verdes Estates	■								■	■			■							■	■	
TOTAL	16	5	3	0	0	0	11	6	11	19	1	3	9	4	3	3	3	8	18	20	1	

Los Angeles County Public Works Services Provided To Cities (Via Agreement)

SD4 (Continued)

	Bridge Inspection and/or Maintenance	Building & Safety	Storm Drain Catch Basin Clean Out	Storm Drain Catch Basin Insert Maintenance (County Flood Control Catch Basins)	City Pump Station	Street Maintenance	Industrial Waste	Permit Issuance & Inspection (Transportation)	Consolidated Sewer Maintenance District	Safe, Clean Water Program	Sewer Maintenance Contract	Street Lighting Maintenance District	Subdivision Maps: Final	Subdivision Maps: Tentative	Traffic Advisor	Traffic Operations Services	Traffic Signal Maintenance	Traffic Signal Maintenance -- Shared Intersections	Underground Storage Tanks	Infrastructure Design Construction	Traffic Monitoring
Paramount	■						■	■	■	■		■							■	■	
Pico Rivera	■						■	■	■	■			■					■	■	■	■
Rancho Palos Verdes							■		■	■									■	■	
Rolling Hills	■	■							■	■			■	■					■	■	
Rolling Hills Estates				■		■	■		■	■		■	■			■			■	■	
Santa Fe Springs	■	■						■	■	■			■					■		■	
Signal Hill								■		■			■						■	■	
South Gate	■							■		■			■					■	■	■	
Torrance	■									■			■					■		■	
Vernon	■									■			■							■	
Whittier	■									■		■						■	■	■	
TOTAL	24	7	3	1	0	1	15	11	17	30	1	6	17	5	3	4	3	13	26	31	2

Los Angeles County Public Works Services Provided To Cities (Via Agreement)

SD5

	Bridge Inspection and/or Maintenance	Building and Safety	Storm Drain Catch Basin Clean Out	Storm Drain Catch Basin Insert Maintenance (County Flood Control Catch Basins)	City Pump Station	Street Maintenance	Industrial Waste	Permit Issuance & Inspection (Transportation)	Consolidated Sewer Maintenance District	Safe, Clean Water Program	Sewer Maintenance Contract	Street Lighting Maintenance District	Subdivision Maps: Final	Subdivision Maps: Tentative	Traffic Advisor	Traffic Operations Services	Traffic-Signal Maintenance	Traffic-Signal Maintenance-- Shared Intersections	Underground Storage Tanks	Infrastructure Design Construction	Traffic Monitoring
Arcadia	■		■							■			■					■	■	■	
Bradbury	■		■	■					■	■						■			■	■	
Burbank	■									■			■							■	
Claremont	■									■									■	■	
Duarte			■	■			■		■	■						■	■		■	■	■
Glendale	■		■							■			■					■		■	
Glendora	■		■						■	■			■				■	■	■	■	
La Cañada Flintridge	■	■	■	■		■	■		■	■		■				■	■	■	■	■	
La Verne	■		■				■			■									■	■	
Lancaster	■							■								■			■	■	
Los Angeles										■								■		■	
Monrovia	■		■							■								■	■	■	■
Palmdale	■							■								■			■	■	
Pasadena	■		■							■			■					■		■	
San Dimas	■						■	■	■	■			■					■	■	■	
San Marino	■		■							■			■					■	■	■	
Santa Clarita	■						■		■	■							■	■	■	■	
Sierra Madre	■									■			■						■	■	
South Pasadena	■		■	■						■			■						■	■	
Temple City	■		■			■	■		■	■							■	■	■	■	
TOTAL	18	1	12	4	0	2	6	3	7	18	0	1	9	0	0	5	5	11	16	20	2

Appendix 2

Public Works' Priority Legislation

Public Works' Priority Legislation

As of September 30, 2024

Bill and Author	Issue Area	Status	County Position
Construction Management			
AB 1957 (Wilson, D-Fairfield)	Best value construction contracting for counties	Signed by Governor on 7/2/24	Support
Environmental Programs			
AB 2346 (Lee, D-Milpitas)	Organic waste reduction regulations: procurement of recovered organic waste products	Signed by Governor on 9/27/24	Support
AB 2514 (Aguilar-Curry, D-Sacramento)	Solid waste: organic waste: diversion: hydrogen: biomethane	Inactive File	Support
SB 707 (Newman, D-Fullerton)	Responsible Textile Recovery Act of 2024	Signed by Governor on 9/28/24	Watch
SB 1143 (Allen, D-Santa Monica)	Household hazardous waste: producer responsibility	Signed by Governor on 9/29/24	Support
Municipal Services			
AB 2427 (McCarty, D-Sacramento)	Electric vehicle charging stations: permitting: curbside charging	Signed by Governor on 9/25/24	Support
AB 2910 (Santiago, D-Los Angeles)	State Housing Law: City of Los Angeles: conversion of commercial or industrial buildings	Vetoed on 9/22/24	None
SB 1461 (Allen, D-Santa Monica)	State of emergency and local emergency: landslide	Inactive File	Support
Sustainability			
SB 1420 (Caballero, D-Fresno)	Hydrogen	Signed by Governor on 9/25/24	None
Transportation			
SB 960 (Weiner, D-San Francisco)	Transportation: planning: transit priority projects: multimodal	Signed by Governor on 9/27/24	Support
SB 1216 (Blakespear, D-Oceanside)	Transportation projects: Class III bikeways: prohibition	Signed by Governor on 9/27/24	Impact

Bill and Author	Issue Area	Status	County Position
<i>Public Contracting and Asset Management</i>			
AB 1890 (Patterson, R-Rocklin)	Public works: prevailing wage	Vetoed on 9/29/24	None
<i>Water Resources</i>			
H.R. 7070 (Stanton, D-AZ)	Wildfire Response Improvement Act	House - Trans. & Infra. Comm.	Support if Amended
H.R. 7065 (Napolitano, D-CA)	Priority for Water Supply and Conservation Act of 2024	House - Trans. & Infra. Comm.	Support
H.R. 8812 (Graves, R-MO)	Water Resources Development Act of 2024	Passed House	Support
S. 3111 (Padilla, D-CA)	National Dam Safety Program Reauthorization	Senate	Support
S. 3830 (Padilla, D-CA)	Low-Income Household Water Assistance Program	Senate	Support
SB 1169 (Stern, D-Calabasas)	Los Angeles County Flood Control District: finances	Signed by Governor on 7/2/24	County-sponsored



Public Works

LOS ANGELES COUNTY

pw.lacounty.gov

900 S. Fremont Avenue
Alhambra, CA 91803