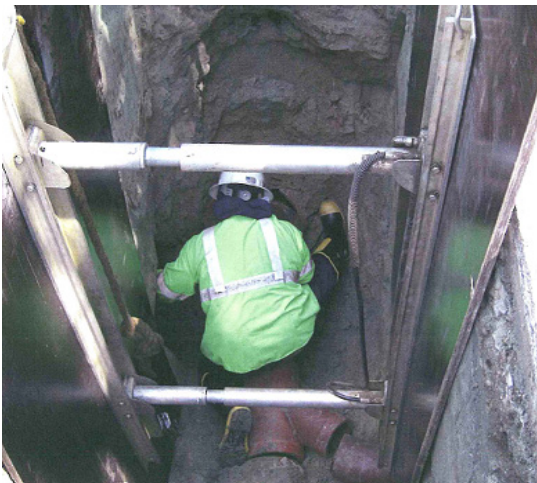


Consolidated Sewer Maintenance District

5th Edition Annual Report



To get more information, learn about the Department of Public Works, or report problems online, please visit our website: <http://dpw.lacounty.gov/>

"We provide sewer maintenance services to protect the public and the environment in a highly-efficient, effective, and responsive manner."

CONSOLIDATED SEWER MAINTENANCE DISTRICT

We in the Consolidated Sewer Maintenance District (District) are proud to be your local sanitary sewer service provider. The District provides sanitary sewer services to unincorporated areas and 41 cities within the County. Engineers and dedicated field personnel are available 24 hours a day, 7 days a week to ensure customers receive uninterrupted sewer services at an affordable price.

In 2006, the State Water Resources Control Board approved stringent new regulations for the operation and maintenance of sewer collection systems throughout the State. The purpose of these regulations is to ensure that sewer systems are adequately funded and properly managed to reduce the number of sanitary sewer overflows (SSOs) and the potential negative impacts to public health. When SSOs do occur, the regulations require prompt response to the incident and thorough reporting and documentation of the event to the appropriate regulatory agencies.

The information in this newsletter can be provided in an alternate format for people with disabilities. To request these accommodations, please contact Sewer Maintenance Division, Direct Assessment Unit, at (626) 300-3399, Monday through Thursday, from 8 a.m. through 5 p.m.

Consolidated Sewer Maintenance District Facilities	Length/Number
Sewer Lines	4,600 miles
Manhole Structures	103,307
Sewage Pump Stations	152
Wastewater Treatment Plants	4
Cities Served by the District	41
Sewer Maintenance Yards	5

Description of Work/Event	Last Fiscal Year's Work Accomplishment
Total length of sewer lines cleaned	12,755,822 ft
Total number of manhole structure inspections	194,822
Total number of manhole structures adjusted to street level	863
Total service requests responses	1,413
Total length of sewer lines inspected by televising	3,245,305 ft
Total length of sewer lines treated for roots	200,333 ft
Total number of pump station inspections	11,709
Total number of major pump station repairs	633
Total number of parcels annexed to the District	68
Total length of sewer lines rehabilitated/reconstructed	50,378 ft
Total length of new sewer lines added to District	65 miles
Total number of sewer overflows/ flood outs	118

The District has seized on this opportunity by taking bold and proactive action to comply with the new regulations and enhance service to its customers. For example, we have expanded our



Closed-Circuit Televising Program to annually inspect the condition of approximately 500 miles of the District's 4,600 miles of sewer lines and correct deficiencies. In addition, our goal is to annually clean about 2,300 miles of sewers through our preventive maintenance program. Furthermore, the District's Accumulative Capital Outlay Fund, financed by a portion of the annual sewer service charge, has given us the ability to address high priority improvements and repairs, such as rehabilitation of sewage pumping plants, and rehabilitation and replacement of aging, deteriorating sewer lines and equipment. The District is able to provide these services for a modest annual fee of \$40.50 for the average single-family residence.

The actions we have taken to comply with the State regulations and enhance services have yielded positive results. Throughout the District, there has been steady significant improvements in the number of SSOs, from 192 in 2007/08, to 118 in 2008/09, and we project this number to be less than 100 this year. Our goals are to continue to deliver sanitary sewer services to your community that are second to none and to provide them at a modest annual cost to the property owners we serve.

Cities/County Areas Served by Consolidated Sewer Maintenance Districts		
Unincorporated County Areas		
Agoura Hills	Hidden Hills	Pico Rivera
Artesia	Industry	Rancho Palos Verdes
Baldwin Park	Irwindale	Rolling Hills
Bellflower	La Cañada-Flintridge	Rolling Hills Estates
Bell Gardens	La Habra Heights	Rosemead
Bradbury	Lakewood	San Dimas
Calabasas	La Mirada	Santa Clarita
Carson	La Puente	Santa Fe Springs
Commerce	Lawndale	South El Monte
Cudahy	Lomita	Temple City
Diamond Bar	Malibu	Walnut
Glendora	Palos Verdes Estates	Westlake Village
Duarte	Paramount	West Hollywood
Hawaiian Gardens		

Los Angeles County
 Department of Public Works
 Sewer Maintenance Division
 P.O. Box 1460
 Alhambra, CA 91802-1460

Residences, Businesses, Homeowner/Condominium Associations, Military Facilities, Federal, and State Complexes

Don't Pay for Free Services

Don't be misled by mailings or solicitations by companies offering their services to help reduce your Sewer Service Charge and usually charging a high fee for their services.



Our service charge is located on your Property Tax Bill under Consolidated Sewer. This service charge is not a tax, it is a service charge you pay for the service received just like your other utility bills. The property tax bill is a cost-effective way to collect these service charges.

If you think your charges are wrong or just have questions, you are welcome to give us a call or write to us. We will investigate and respond to your inquiry and make correction, if necessary, at no cost to property owners.

We charge for the maintenance and repair of the sewer line in the street fronting your property whether you are connected or not. For this reason, property owners with access to a sewer line who choose to use septic systems are included in our sewer service charge assessment because under the Plumbing Code Title 28, should your septic tank break down you will not be able to obtain a permit to fix it. You will have to connect to the main sewer line at that point.

For more information regarding connection to the main sewer line, please contact your local Building and Safety Office. To find the nearest office, please visit their website:

http://ladpw.org/general/facilities/app_building.cfm

F.O.G. and Sanitary Sewer Overflows

Fats, Oils, and Grease (FOG) are not just bad for your arteries and your waistline; they are bad for sewers too.

SSOs and backups can cause health hazards, damage home interiors, and threaten the environment. An increasingly common cause of overflows is sewer pipes blocked by grease. Grease gets into the sewer from household drains as well as from poorly maintained grease traps in restaurants and other businesses.

Most of us know grease as the byproduct of cooking. Grease is found in such things as:

- Meat fats
- Lard
- Cooking oil
- Shortening
- Butter and margarine
- Food scraps
- Baking goods
- Sauces
- Dairy products

Continued on next column.

Too often grease is washed into the plumbing system, usually through a kitchen sink. Grease sticks to the insides of sewer pipes (both on your property and in the streets). Over time, the grease can build up and block the entire pipe.



Overflowing manhole

Impacts of SSOs

- Raw sewage overflowing in your home or your neighbor's home;
- An expensive and unpleasant cleanup;
- Raw sewage overflowing into parks, yards, and streets;
- Potential contact with disease-causing organisms; and
- An increase in operation and maintenance costs for local sewer departments, which causes higher sewer bills for customers.

Preventing SSOs Caused by FOG at Homes and Businesses.

1. Never pour grease down the sink drains or into toilets.
2. Scrape grease and food scraps from trays, plates, pots, pans, utensils, and grills and cooking surfaces into a can or the trash for disposal (or recycling where available).
3. Do not put grease down garbage disposals. Put baskets/strainers in sink drains to catch food scraps and other solids, and empty the drain basket/strainers into the trash for disposal.
4. Speak with your friends and neighbors about the problem of grease in the sewer system and how to keep it out. Call your local sewer system authority if you have any questions.

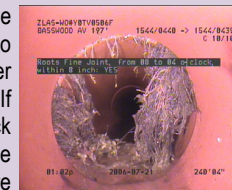
Restaurants, large buildings (such as apartment complexes), and other commercial establishments may have grease traps or interceptors that keep grease out of the sewer system. For a grease trap or interceptor to work correctly, it must be properly:

- Designed (sized and manufactured to handle the amount that is expected),
- Installed (level, vented, etc.), and
- Maintained (cleaned and serviced on a frequent basis).



Another cause of SSOs are roots in the sewer lateral. With the abundance of moisture, nutrients, and oxygen a broken sewer lateral is the ideal environment for roots to grow. The flow of warm water inside the sewer lateral causes water vapor to escape to the cold dry soil surrounding the pipes. Tree roots will penetrate the opening to reach the nutrients and moisture inside the pipe sometimes causing the cracks to get bigger and eventually the line will collapse. In some cases, the roots will grow down the sewer lateral and protrude into the mainline sewer. Once inside, the roots will form a large mass that accumulates a thick coating of grease and eventually will block the flow of sewage causing a SSO and or flood out. Below are simple tips to prevent or minimize these problems.

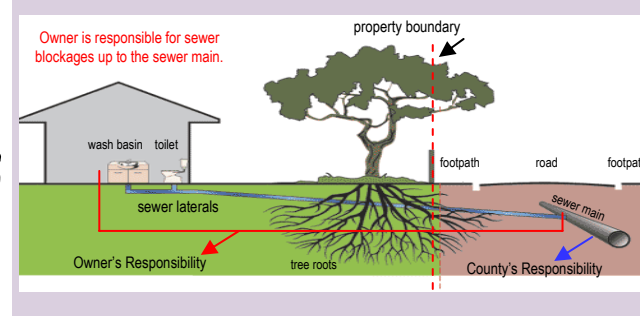
Doing regular maintenance is less costly than emergency repairs and will also prevent future problems. Hire a license plumber to check and clean your lateral every couple of years. If you have roots in your lateral a temporary solution would be to use an environmentally safe chemical to dissolve the roots. However, roots will continue to enter the broken lateral and cause further damage until the laterals are repaired. If laterals are not repaired roots will grow back thicker and stronger and will eventually cause raw sewage back-ups. Homeowners are responsible for fixing the line from their house to the connection in the street.



Root intrusion in a sewer

Homeowners should also be aware of the location of their sewer lines and refrain from planting trees, bushes, and hedges near the line. Consult with your local nursery to see which trees are safer, usually small, slow-growing species with less aggressive root systems are recommended but be aware that all tree roots can potentially get into the sewer line so before they get too big, replace them.

SEWER LATERALS - AREAS OF RESPONSIBILITY



POSITIONING OUR MANHOLES ON THE GLOBAL NETWORK

As part of our preventive maintenance activities, our crews locate and inspect our sanitary sewer manholes every six months to determine proper sewage flow levels and address any maintenance or structural issues. There are instances when manholes are buried under re-paved roadways or loose earth at easement locations. These conditions pose some challenges for our crews in locating these underground structures, consequently, increasing the inspection times at these areas. To assist in this critical maintenance activity, the District has embarked on a new endeavor of digitizing the locations of our manholes by utilizing global positioning system (GPS) hand-held units. While inspecting the sewage flows at all manhole locations, maintenance crews will obtain and permanently store the precise global coordinates of these structures in the District's database and geographic information system (GIS) maps. This information will facilitate in locating our manholes in the future during our preventive maintenance activities, as well as emergency incidents where time is of the essence. In addition, these coordinates will improve our maintenance maps by providing an accurate representation of the locations of our underground manholes and sewer mainlines in relation to nearby homes, buildings, and other utility infrastructure. This activity will further enhance our capability to maintain our sewer mainlines and respond to emergencies in a timely and cost-effective manner.



Contacts

If you see a Sewage Overflow, notify the Department of Public Works IMMEDIATELY! 1-800-675-HELP(4357) ☎

For questions or comments regarding this Annual Report, call (626) 300-3399 or for previous reports visit our website <http://dpw.lacounty.gov/smd/smd/>

If you would like to write to us, please send all inquiries to:
 County of Los Angeles Department of Public Works
 Sewer Maintenance Division
 P.O. Box 1475
 Alhambra, CA 91802-1475