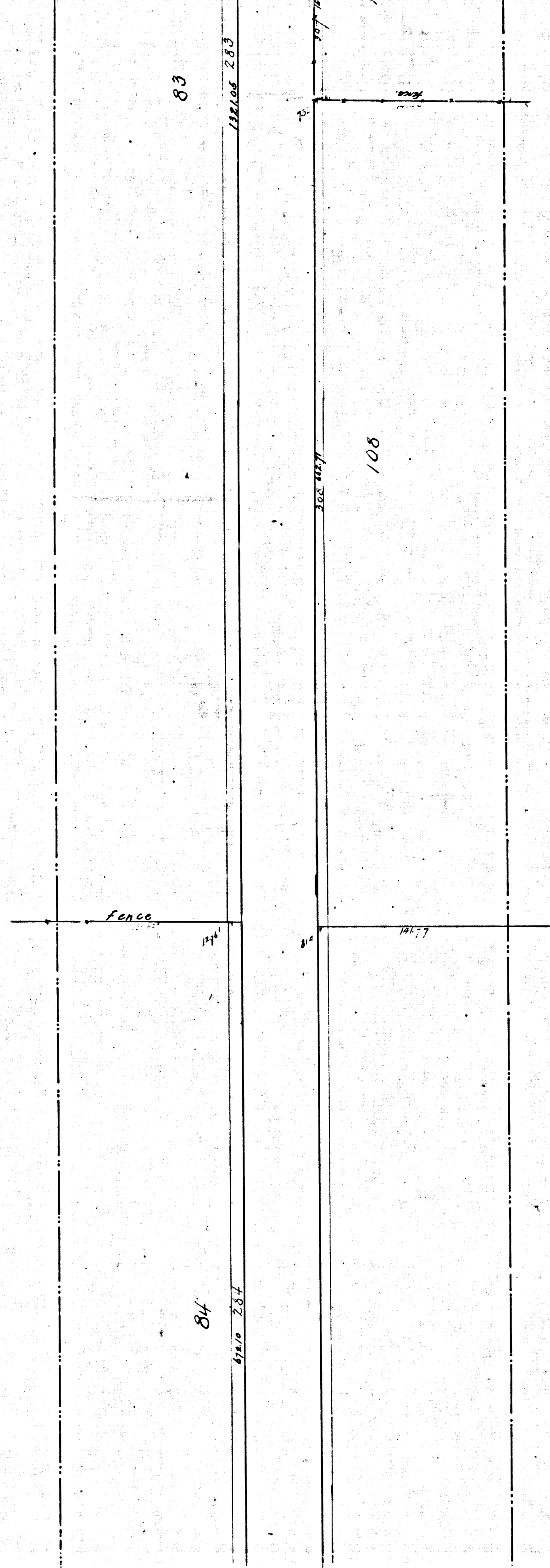


	R.F.	56	
A	1	OF	A
			11

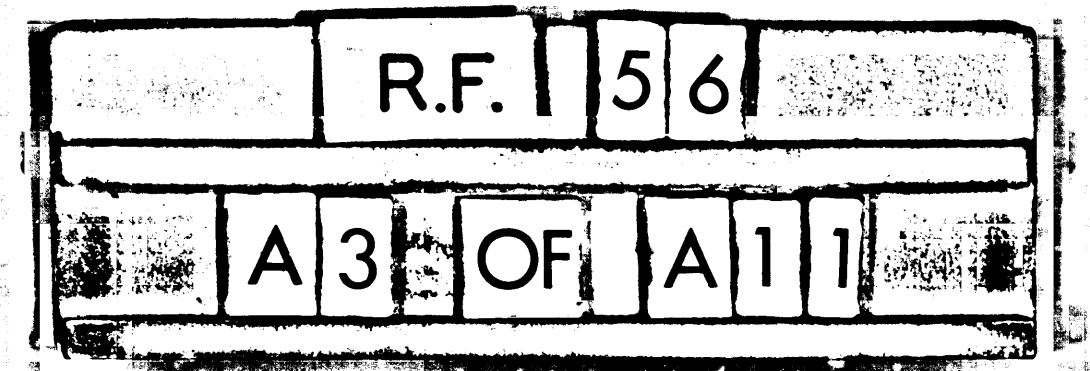
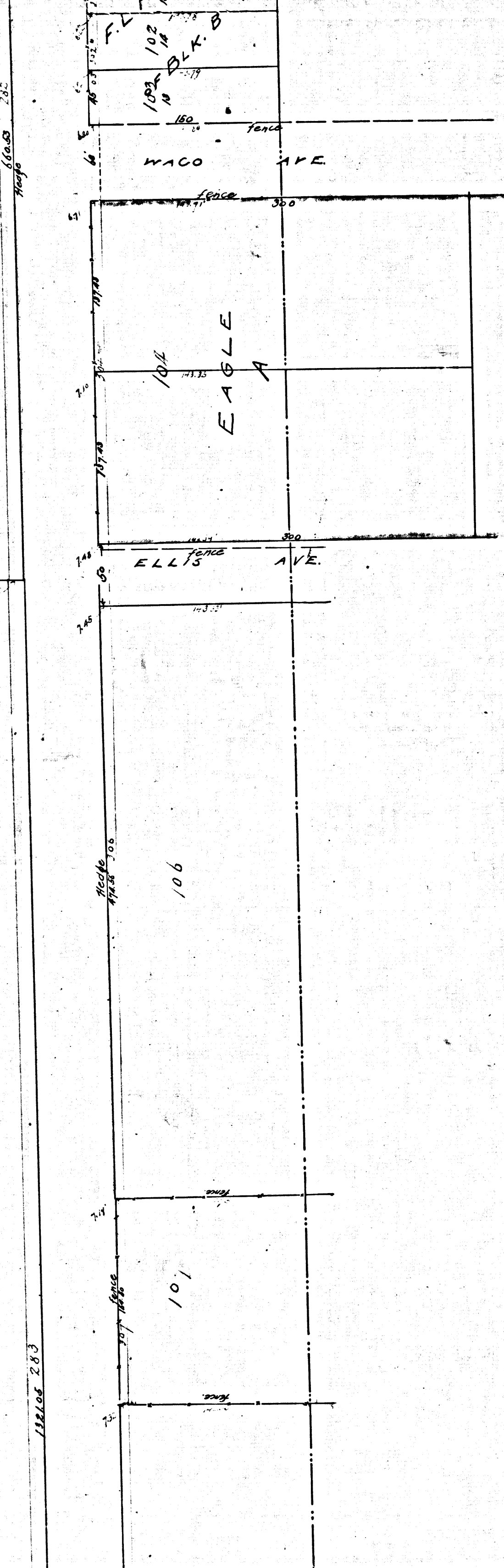
File of Sept. 10, 1897
Reg. City Clerk

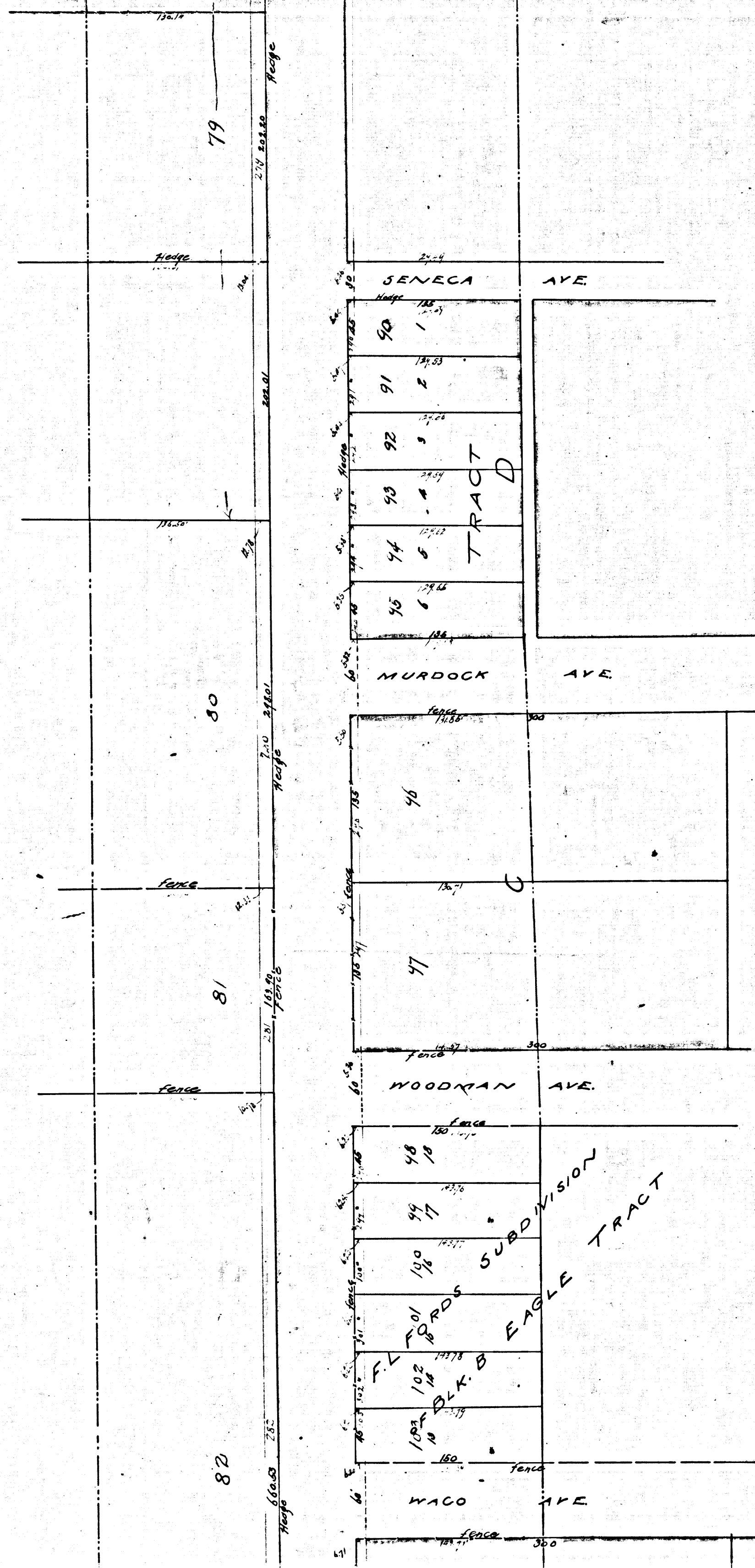


	R.F.	56	
A2	OF	A11	

82

83

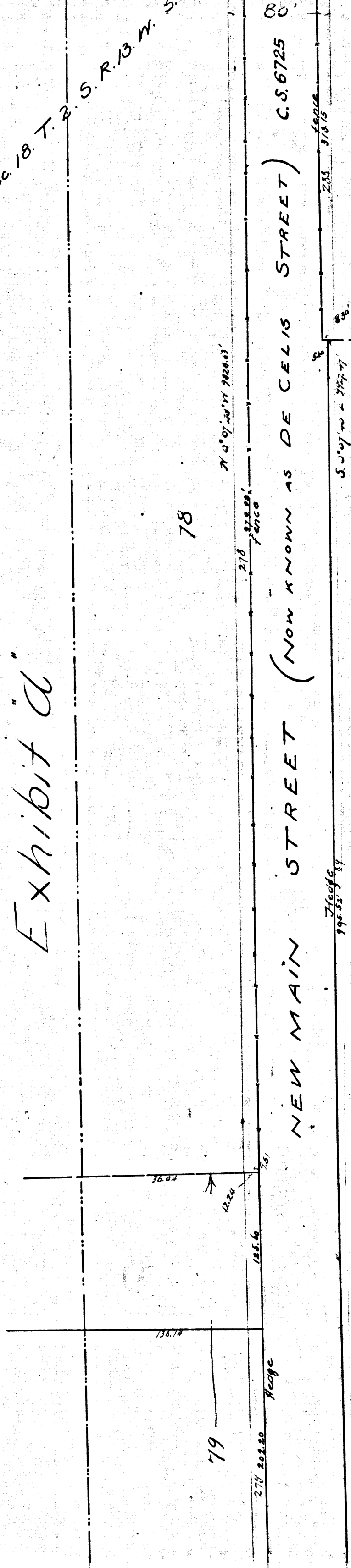




	R.F.	56	
	A 4	OF	A 11

Exhibit 'a'

Sec. 18 T. 2 S. R. 13. W. 4



C.S. 6725

MAP
 SHOWING THE ASSESSMENT DISTRICT
 FOR THE WIDENING OF
NEW MAIN STREET (NOW KNOWN AS DE CELIS STREET)
 BETWEEN
 THIRTY SEVENTH STREET AND SLAUSON AVENUE
 IN
 THE
 CITY OF LOS ANGELES

SH#7
 June 1897. U.H. Doctweiler, City Engineer.

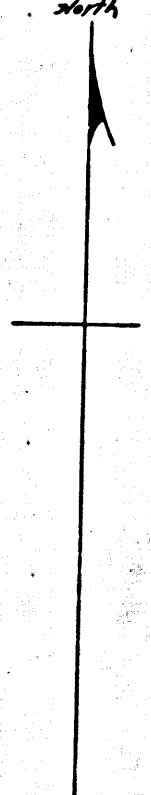
Scale 60 feet to 1 inch.

For details see widening Main Street and C.S. 6327

Handed by Geo. B. Brown
 July 28, 1897
 City of Los Angeles
 City Engineer

	R.F.	56	
A5	OF	A11	

41



MALCOMSON ST

EULALIE TRACT	
1	75
2	74
3	73
4	72
5	71

76

Sec 11, T. 2, S. R. 13, W. S.B.M.

C.S. 6927

Sec. 8, T. 2, S. R. 13, W. S.B.M.

HERNON

AVENUE

Sec 18, T. 2, S. R. 13, W. S.B.M.

STREET C.S. 6725

Sec 17, T. 2, S. R. 13, W. S.B.M.

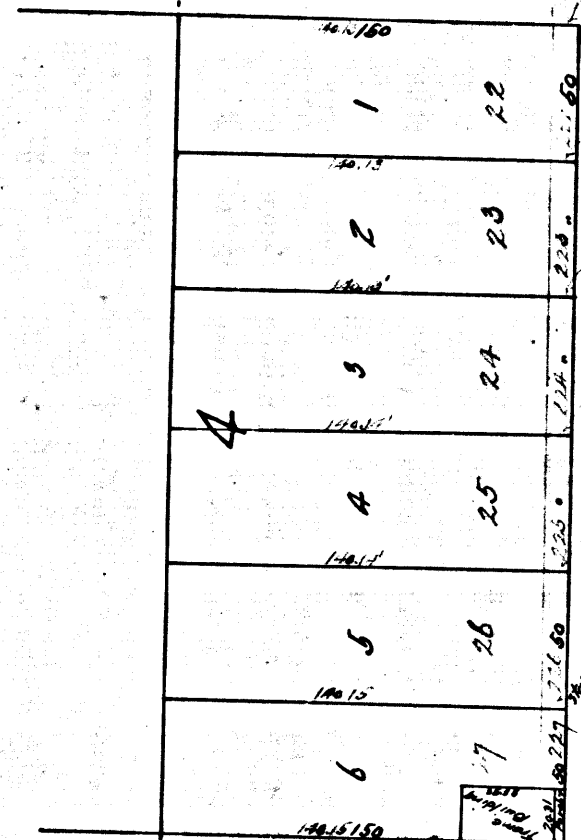
88

Start July 25, 1917
C. B. Homan, City Clerk
by S. H. Homan

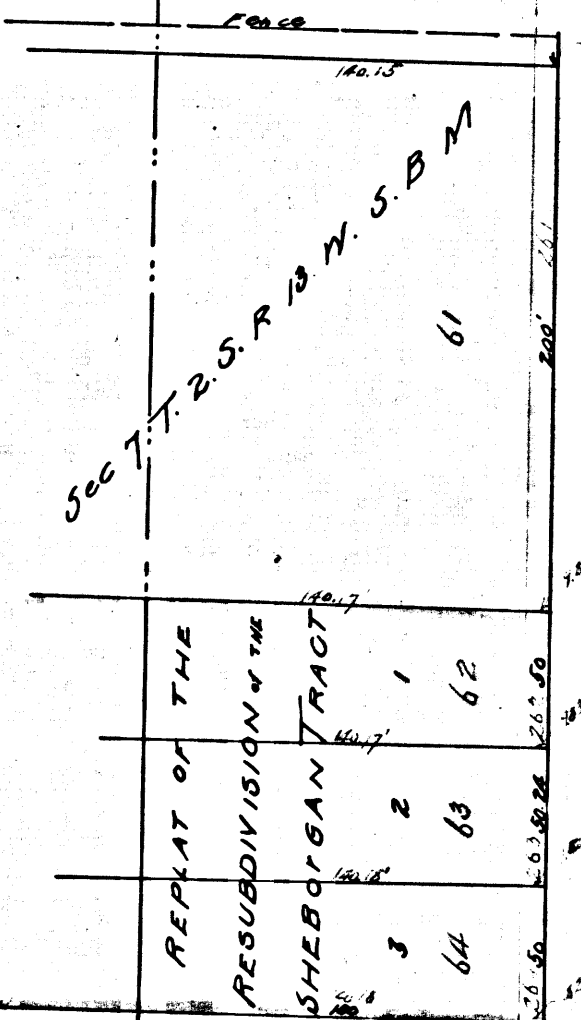
	R.F.	56	
	A 6	OF	A 11



CONFIDENCE ST

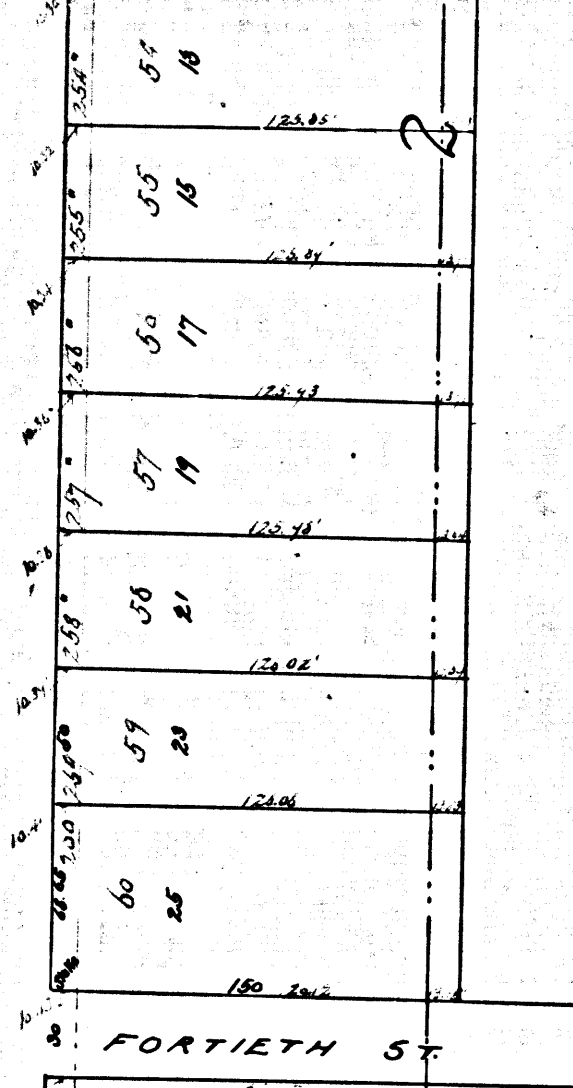
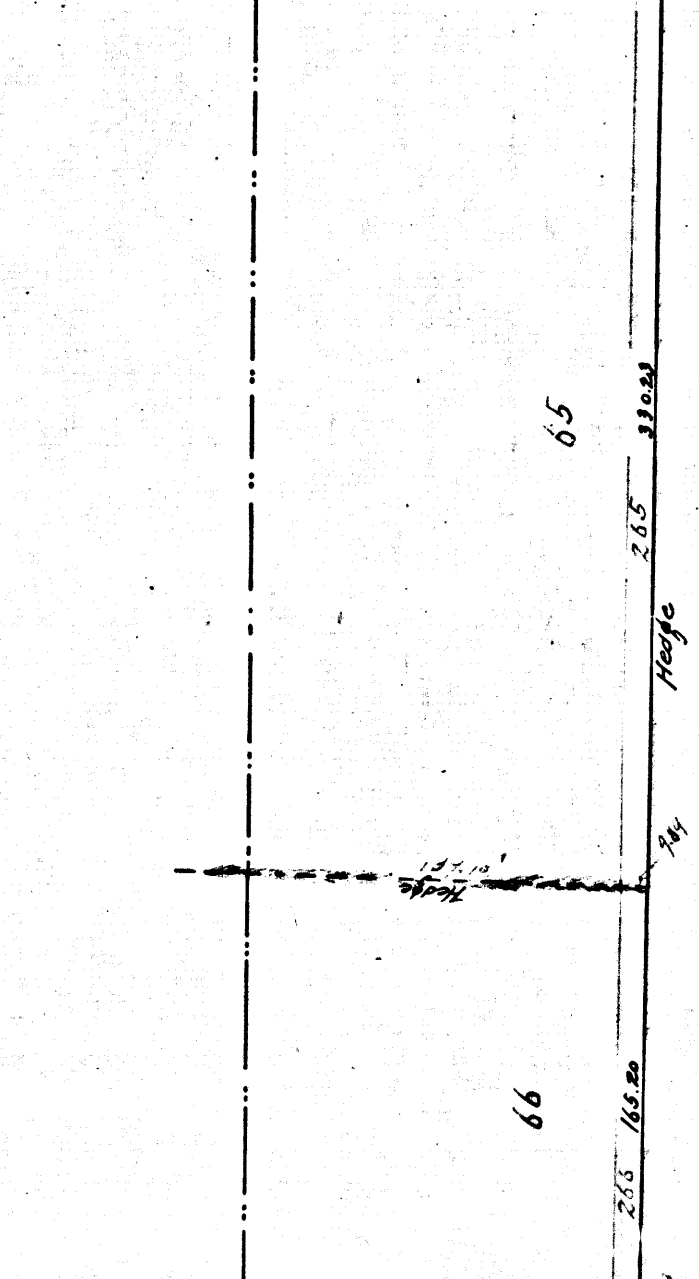


DEFIANCE ST

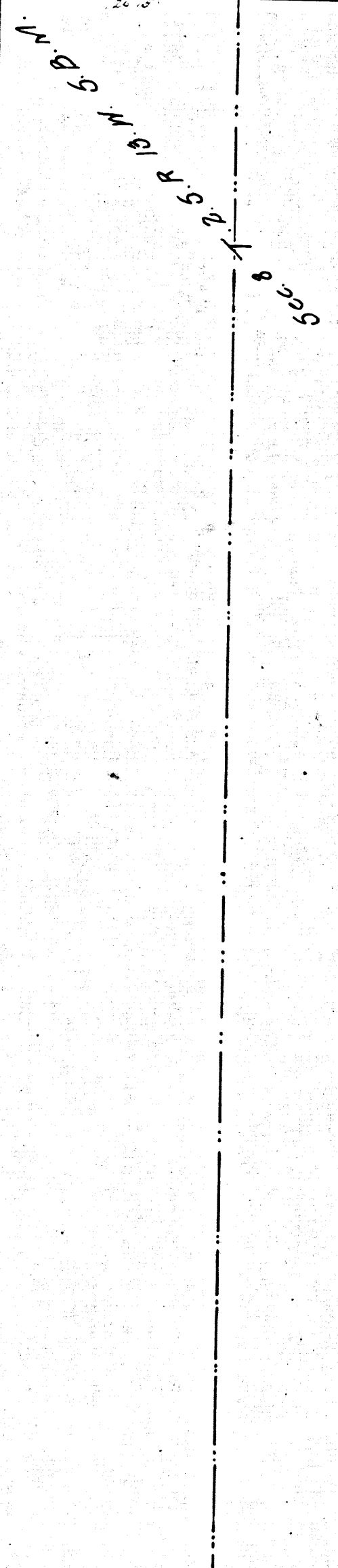


Sec 7 T. 25. R. 13 N. S. B. M.

REPLAT OF THE RESUBDIVISION OF THE SHEBOYGAN TRACT

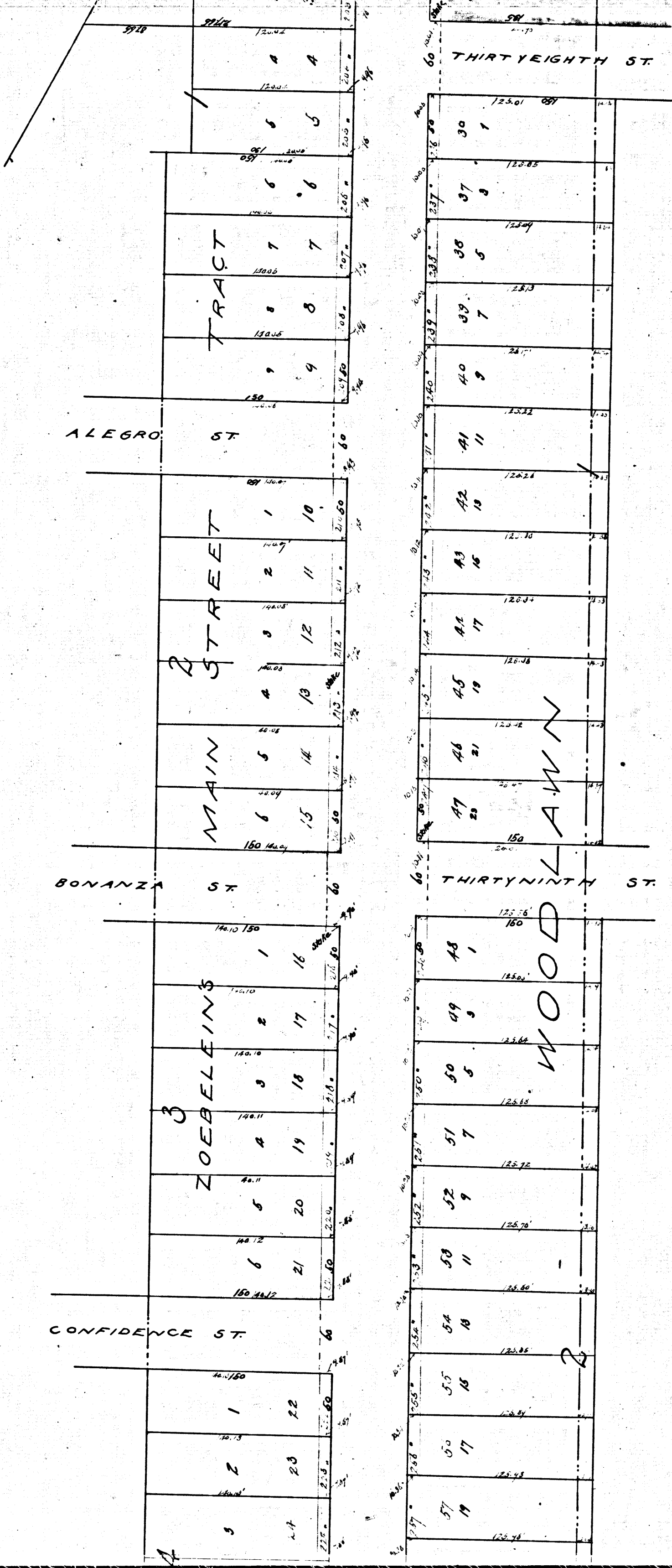


FORTIETH ST

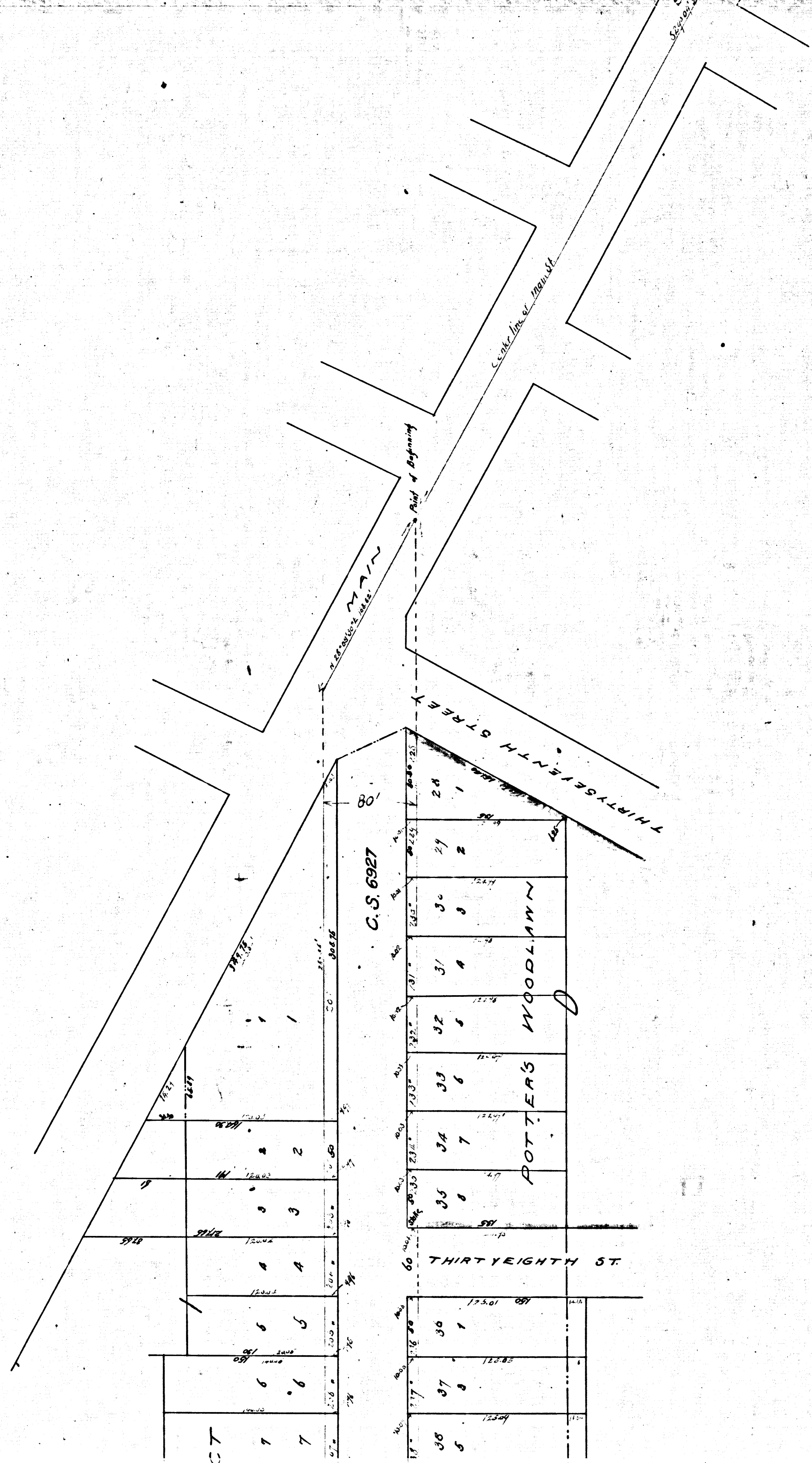


Sec 8 T. 25. R. 13 N. S. B. M.

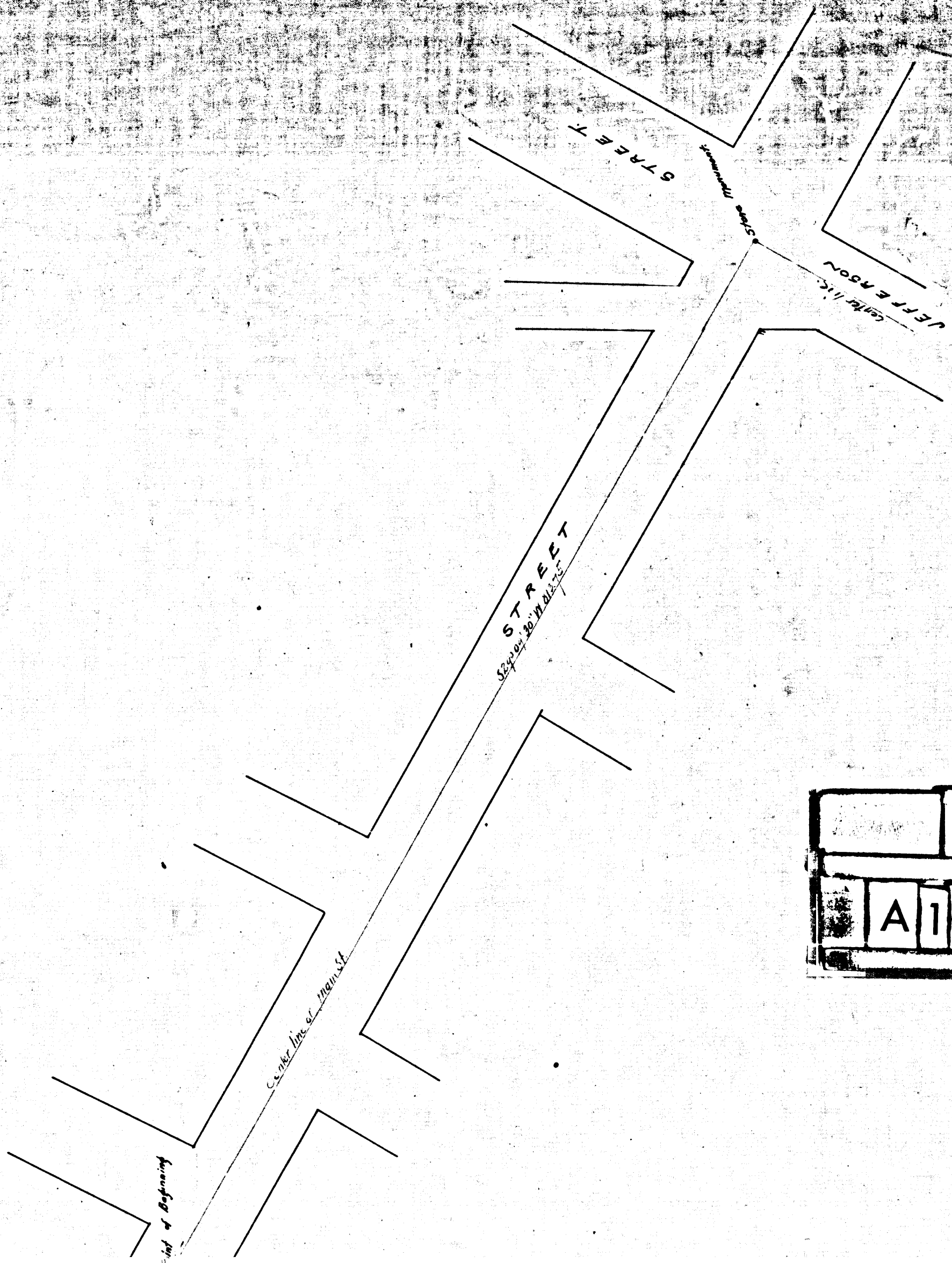
R.F. 56 A 8 OF A 11



R.F. 56
 A9 OF A11



R.F. 56
 A10 OF A11



	R.F.	56		
A	11	OF	A	11