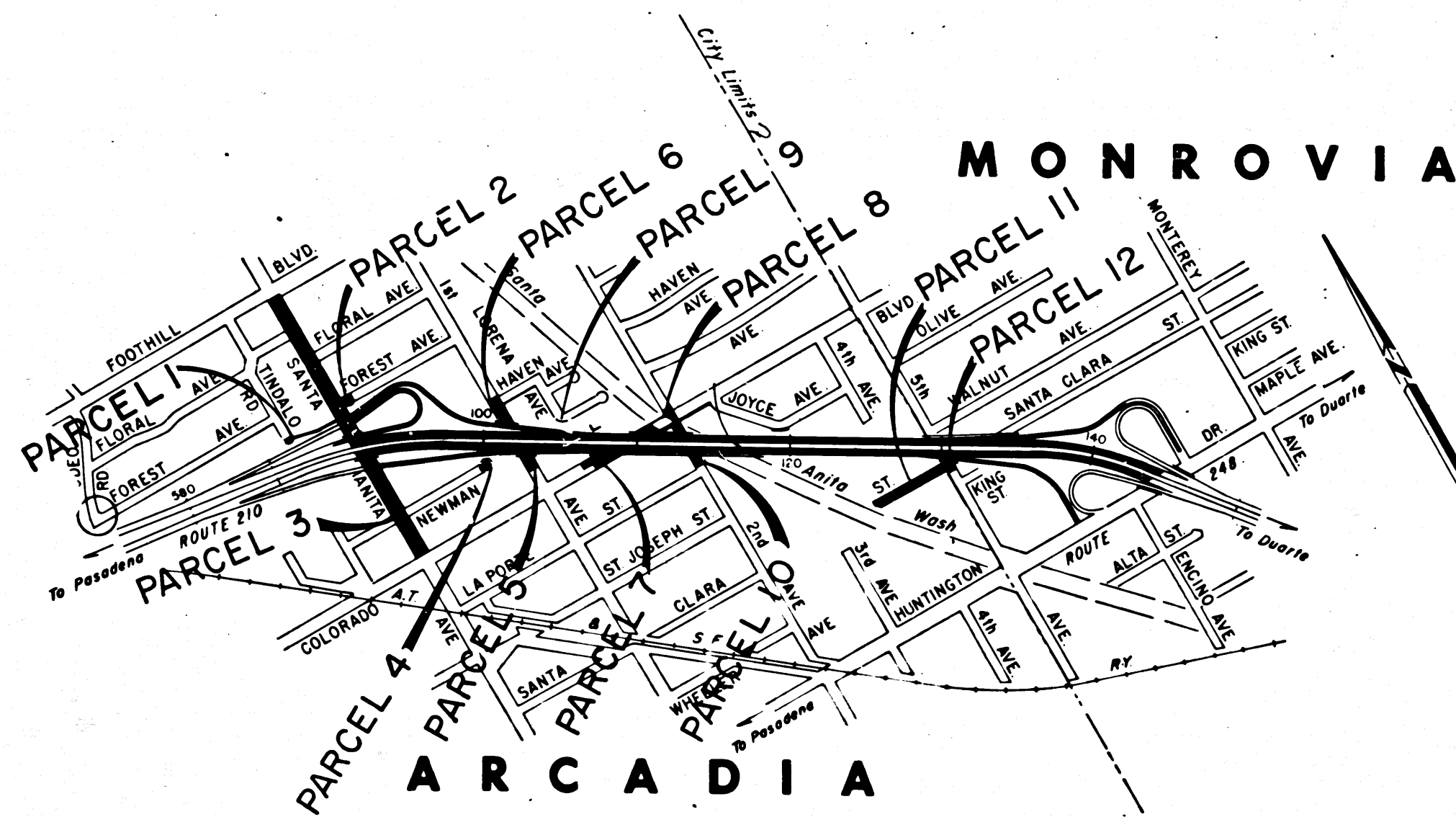


STATE OF CALIFORNIA  
 TRANSPORTATION AGENCY  
 DEPARTMENT OF PUBLIC WORKS  
 DIVISION OF HIGHWAYS  
 RIGHT OF WAY MAPS OF  
**STATE HIGHWAY**

In Los Angeles County in Arcadia and Monrovia between  
 Santa Anita Avenue and Huntington Drive



DIST	COUNTY	ROUTE	POST MILES	SHEET NO.	TOTAL SHEETS
07	LA	210	31.8/32.6	1	4

*G.W. Lee*  
 DEPUTY DISTRICT ENGINEER  
 Oct. 24, 1968  
 DATE

2313  
 FILED  
 AT REQUEST OF  
 DEPT. OF PUBLIC WORKS  
 OCT. 24, 1968  
 1 PAST 11 AM  
 IN BOOK 7  
 AT PAGE 46  
 OF STATE HIGHWAY MAPS  
 LOS ANGELES COUNTY, CALIF.  
 RAY E. LEE  
 COUNTY RECORDER  
*Ray E. Lee*

INTERSTATE  
 STATE OF CALIFORNIA  
 TRANSPORTATION AGENCY  
 DEPARTMENT OF PUBLIC WORKS  
 DIVISION OF HIGHWAYS  
**PROPOSED RELINQUISHMENT**

SCALE IN FEET  
 0 2000 3000

DR'N BY L.S.	R/W MAP NO.
C'LC BY G.D.W.	REF. MAP NO.
C'K'D BY M.M.	REL-665
REVISED	666

COUNTY ENGINEER'S COPY

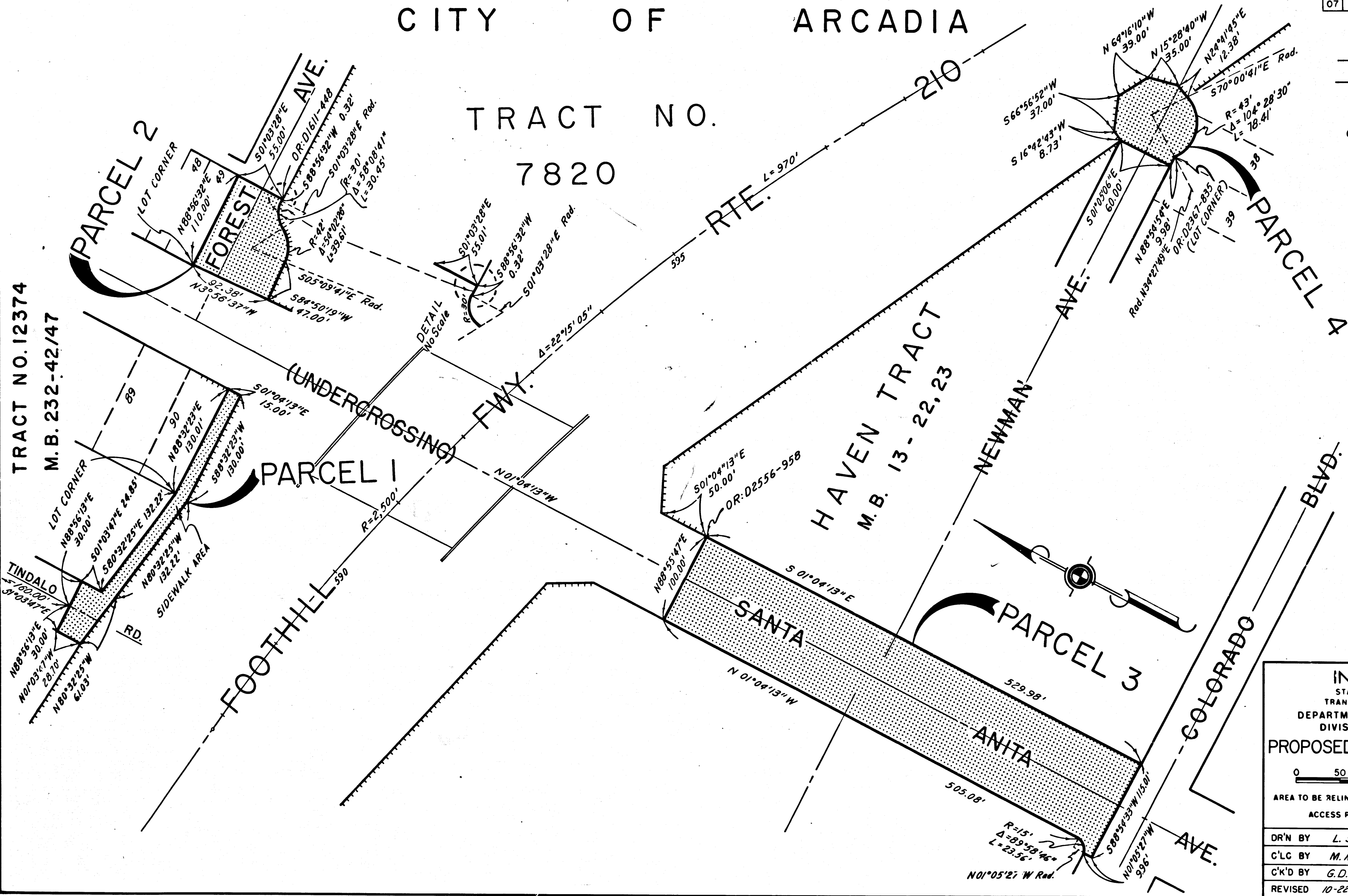
DIST	COUNTY	ROUTE	POST MILES	SHEET NO.	TOTAL SHEETS
07	LA	210	31.8/32.6	2	4

# CITY OF ARCADIA

TRACT NO. 7820

*R.W. Walker*  
SENIOR HIGHWAY ENGINEER  
Oct. 24, 1968  
DATE

FILED WITH LOS ANGELES COUNTY RECORDER, RAY E. LEE  
OCT 29 1968



TRACT NO. 12374  
M.B. 232-42/47

HAVEN TRACT  
M.B. 13-22,23

INTERSTATE  
STATE OF CALIFORNIA  
TRANSPORTATION AGENCY  
DEPARTMENT OF PUBLIC WORKS  
DIVISION OF HIGHWAYS

PROPOSED RELINQUISHMENT

0 50 100 150 200

AREA TO BE RELINQUISHED SHOWN THUS

ACCESS PROHIBITED

DR'N BY	L. S.	R/W MAP NO.	F-1221
C'LC BY	M. M.	REF. MAP NO.	
C'K'D BY	G.D.W.	REL-665	666
REVISED	10-22-58		

COUNTY ENGINEER'S COPY

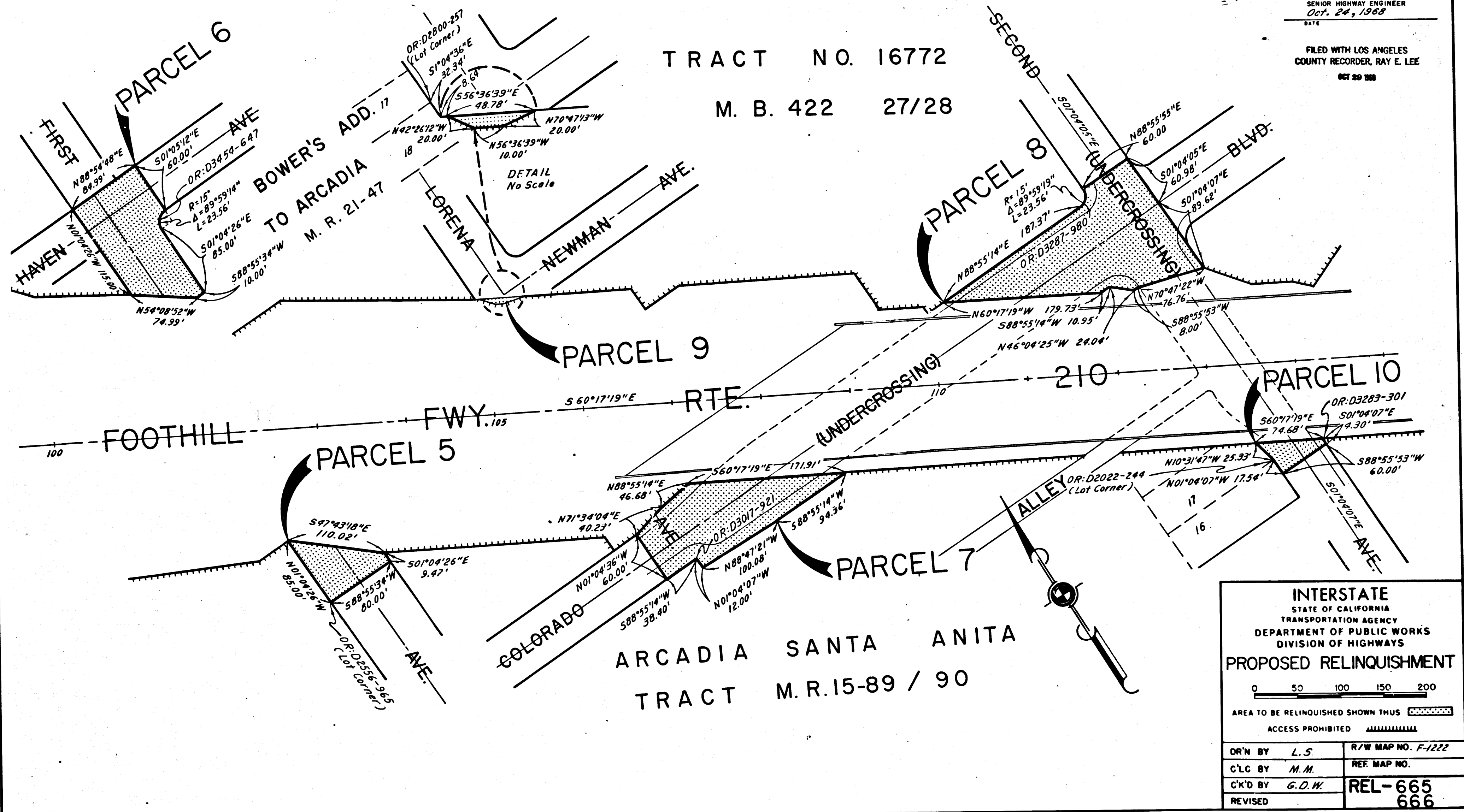
DIST	COUNTY	ROUTE	POST MILES	SHEET NO.	TOTAL SHEETS
07	LA	210	318/32.6	3	4

# CITY OF ARCADIA

TRACT NO. 16772  
M. B. 422 27/28

*R.W. Folkin*  
SENIOR HIGHWAY ENGINEER  
Oct. 24, 1968  
DATE

FILED WITH LOS ANGELES  
COUNTY RECORDER, RAY E. LEE  
OCT 29 1968



**INTERSTATE**  
STATE OF CALIFORNIA  
TRANSPORTATION AGENCY  
DEPARTMENT OF PUBLIC WORKS  
DIVISION OF HIGHWAYS

**PROPOSED RELINQUISHMENT**

0 50 100 150 200

AREA TO BE RELINQUISHED SHOWN THUS

ACCESS PROHIBITED

DR'N BY	L.S.	R/W MAP NO.	F-1222
C'LC BY	M.M.	REF. MAP NO.	
C'K'D BY	G.D.W.	REL-	665
REVISED			666

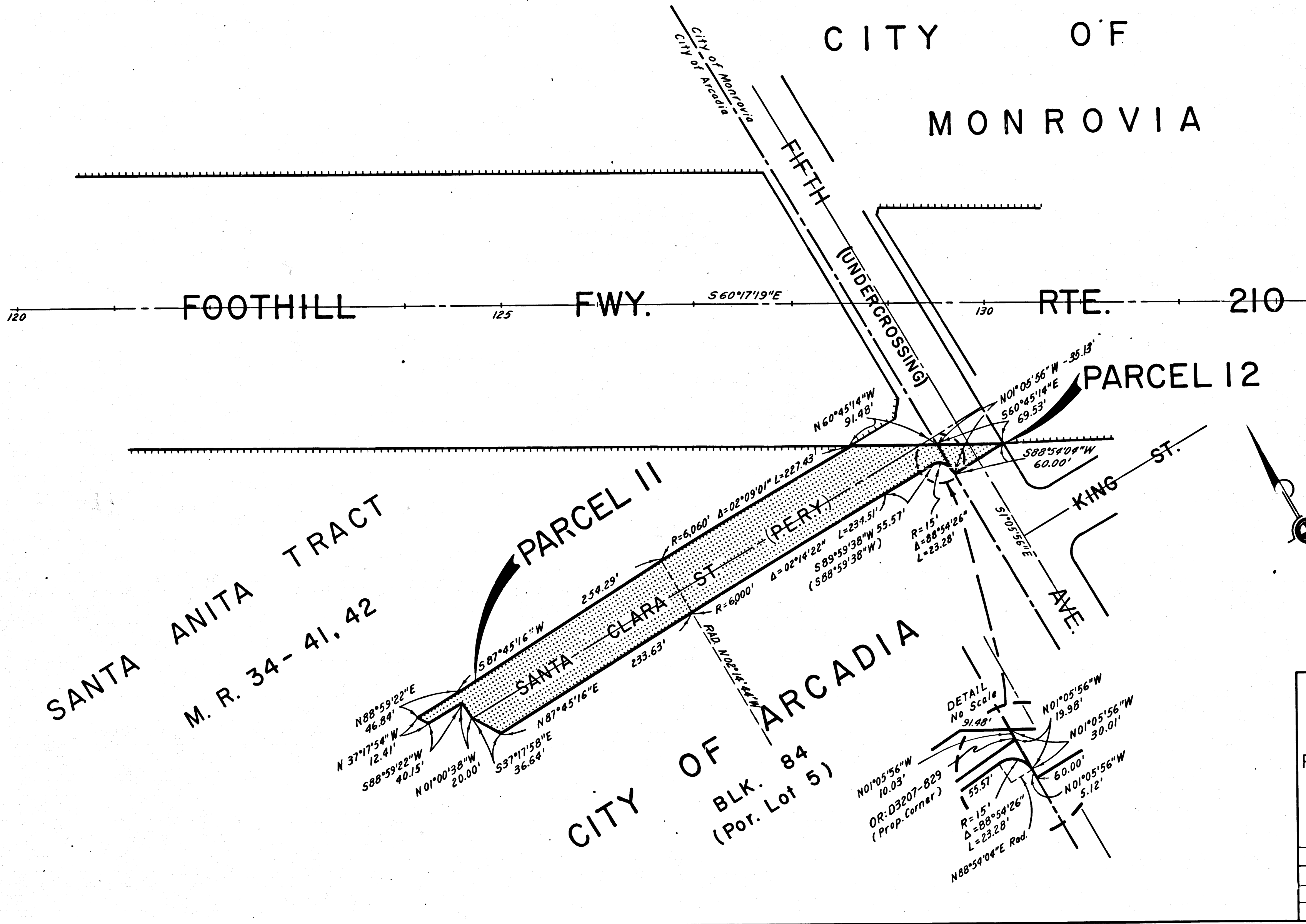
COUNTY ENGINEER'S COPY

DIST	COUNTY	ROUTE	POST MILES	SHEET NO.	TOTAL SHEETS
07	L.A.	210	31.8/32.6	9	9

*R.W. Fisher*  
 SENIOR HIGHWAY ENGINEER  
 Oct. 24, 1968  
 DATE

FILED WITH LOS ANGELES  
 COUNTY RECORDER, RAY E. LEE  
 OCT 29 1968

# CITY OF MONROVIA



**INTERSTATE**  
 STATE OF CALIFORNIA  
 TRANSPORTATION AGENCY  
 DEPARTMENT OF PUBLIC WORKS  
 DIVISION OF HIGHWAYS

**PROPOSED RELINQUISHMENT**

0 50 100 150 200

AREA TO BE RELINQUISHED SHOWN THUS

ACCESS PROHIBITED

DR'N BY	L. S.	R/W MAP NO.	F-1222
C'LG BY	M. M.	REF. MAP NO.	
C'K'D BY	G. D. W.	REL-665	
REVISED	8-27-68	666	

COUNTY ENGINEER'S COPY