

DIST	COUNTY	ROUTE	POST MILES	SHEET NO.	TOTAL SHEETS
07	L.A.	5	884-88.7	1	2

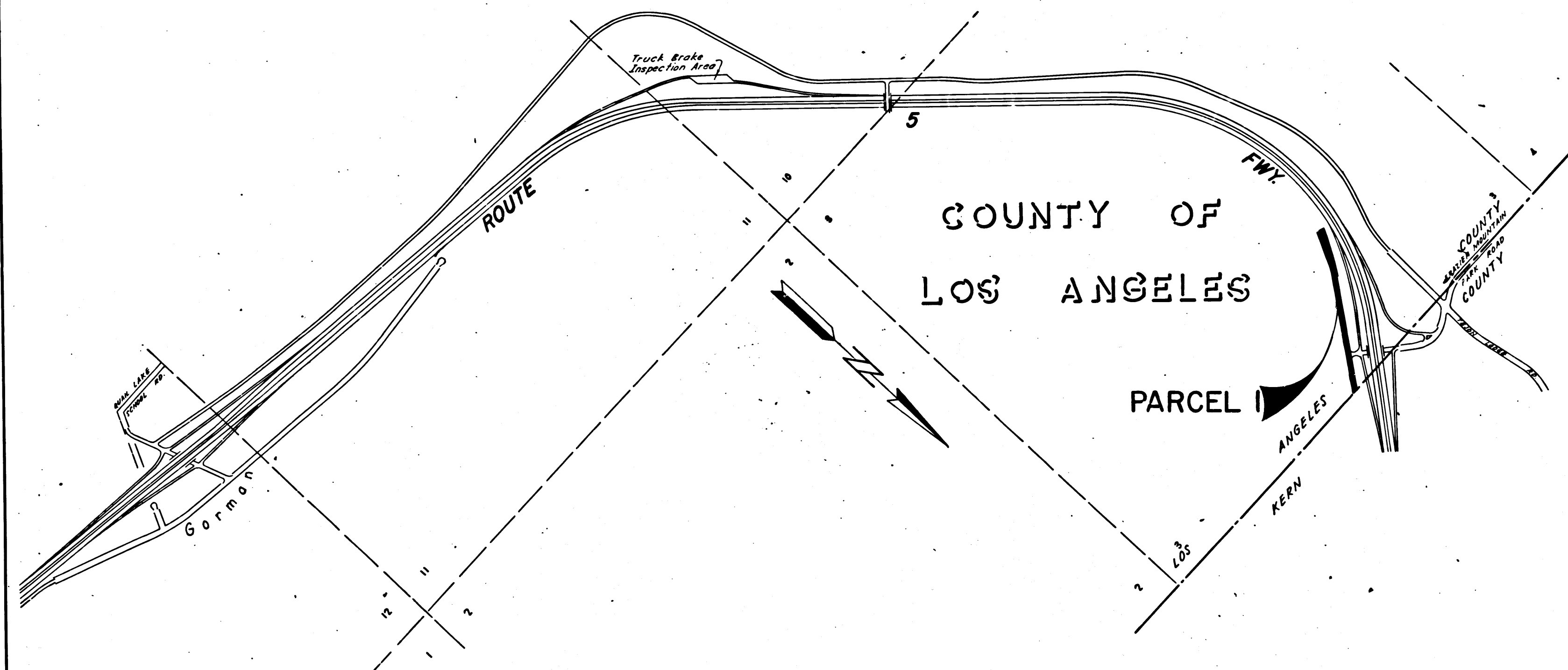
STATE OF CALIFORNIA  
 TRANSPORTATION AGENCY  
 DEPARTMENT OF PUBLIC WORKS  
 DIVISION OF HIGHWAYS

*A. L. Humelhook*  
 DEPUTY DISTRICT ENGINEER  
 REGISTERED CIVIL ENGINEER NO. 6416  
 August 14, 1972  
 DATE

RIGHT OF WAY MAPS OF  
**STATE HIGHWAY**  
 In the County of Los Angeles along Route 5 Fwy. between  
 0.3 mile south of the Kern Co. line and the Kern Co. line

2279

FILED  
 AT REQUEST OF  
 DEPT. OF PUBLIC WORKS  
 OCT. 26, 1972  
 10:10 AM  
 IN BOOK 10  
 AT PAGE 46  
 OF STATE HIGHWAY MAPS  
 LOS ANGELES COUNTY, CALIF.  
 COUNTY RECORDER  
 BY *[Signature]*  
 Deputy *Free*



INTERSTATE  
 STATE OF CALIFORNIA  
 TRANSPORTATION AGENCY  
 DEPARTMENT OF PUBLIC WORKS  
 DIVISION OF HIGHWAYS  
**PROPOSED RELINQUISHMENT**

SCALE  
 0 600 1200 1800 2400

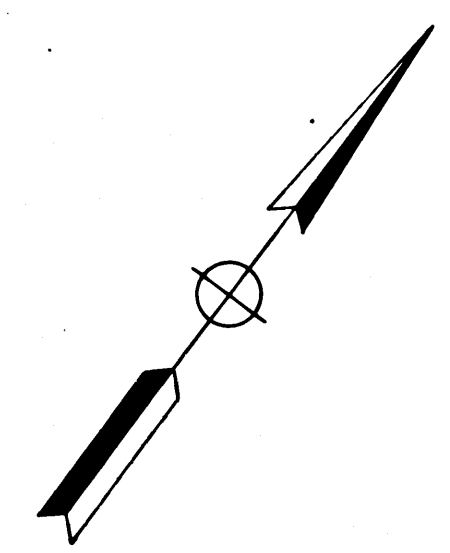
DR'N BY <i>L.W.K.</i>	R/W MAP NO. <i>F1324</i>
C'LC BY <i>M.P.</i>	CONTRACT NO. <i>202304</i>
C'K'D BY <i>H.L.</i>	<b>REL-736</b>
REVISED	

FILED WITH LOS ANGELES  
COUNTY RECORDER  
OCT 26 1972

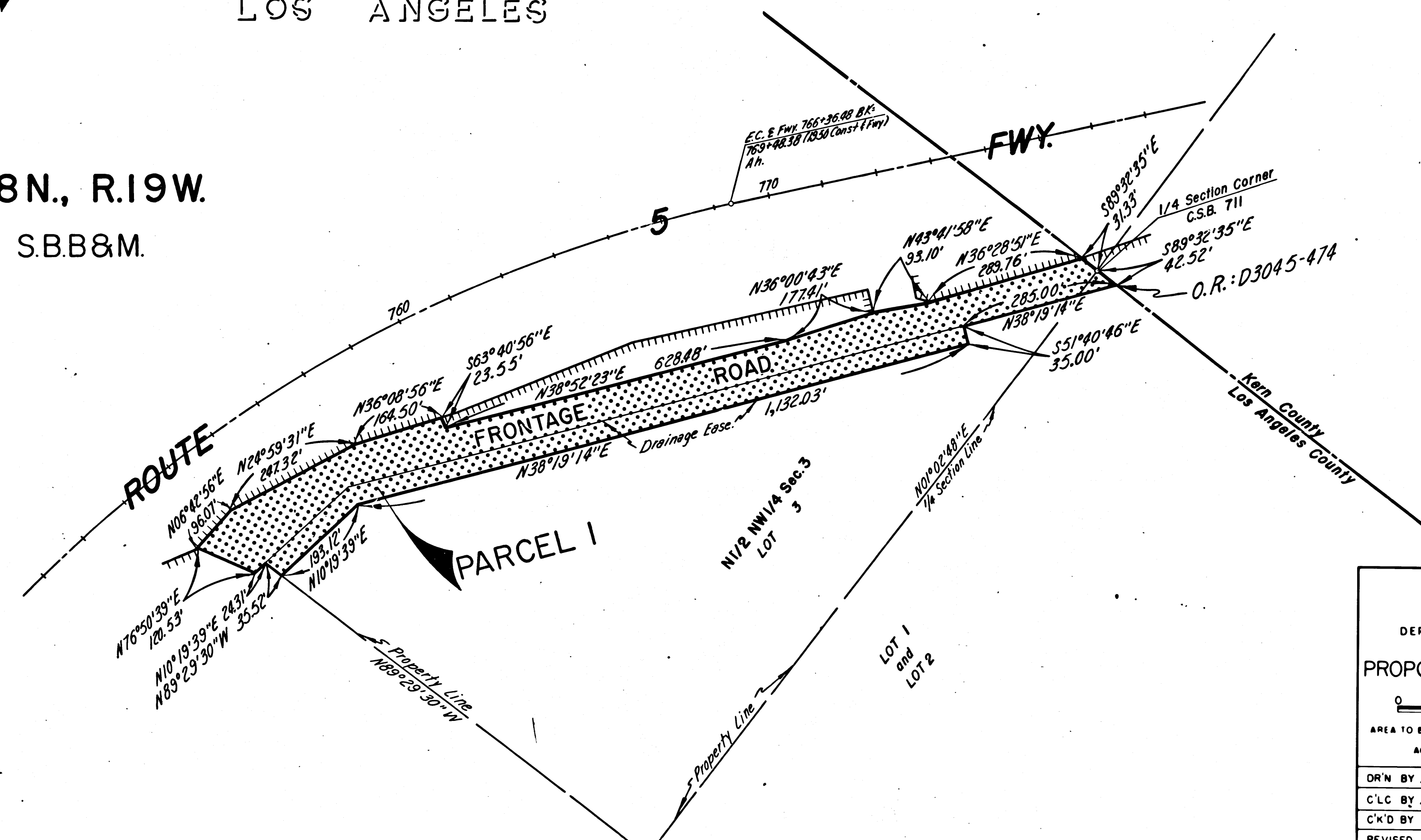
DIST	COUNTY	ROUTE	POST MILES	SHEET NO.	TOTAL SHEETS
07	L.A.	5	808-887	2	2

*Carl B. Mordley*  
DISTRICT RIGHT OF WAY ENGINEER  
REGISTERED CIVIL ENGINEER NO. 14734  
August 14, 1972  
DATE

COUNTY OF  
LOS ANGELES



T.8N., R.19W.  
S.B.B&M.



INTERSTATE  
STATE OF CALIFORNIA  
TRANSPORTATION AGENCY  
DEPARTMENT OF PUBLIC WORKS  
DIVISION OF HIGHWAYS

PROPOSED RELINQUISHMENT

0 100 150 200 250

AREA TO BE RELINQUISHED SHOWN THUS

ACCESS PROHIBITED

DR'N BY <i>L. Kuehn</i>	R/W MAP NO. <i>F-1324</i>
C'LC BY <i>M. Riley</i>	CONTRACT NO. <i>202304</i>
C'K'D BY <i>H. Lee</i>	REL-736
REVISED	