



**COLOR
ME!**

LA RIVER

MASTER

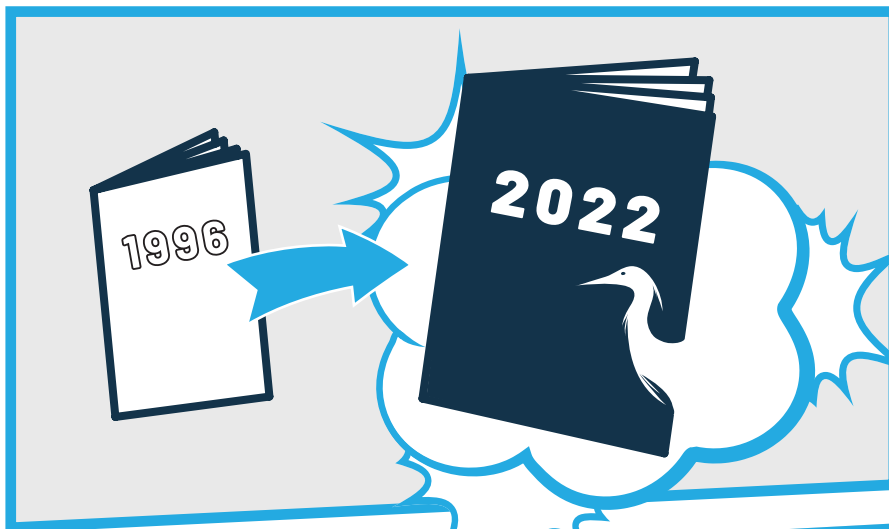
PLAN

ACTIVITY BOOK

.....
LA River Master Plan.org

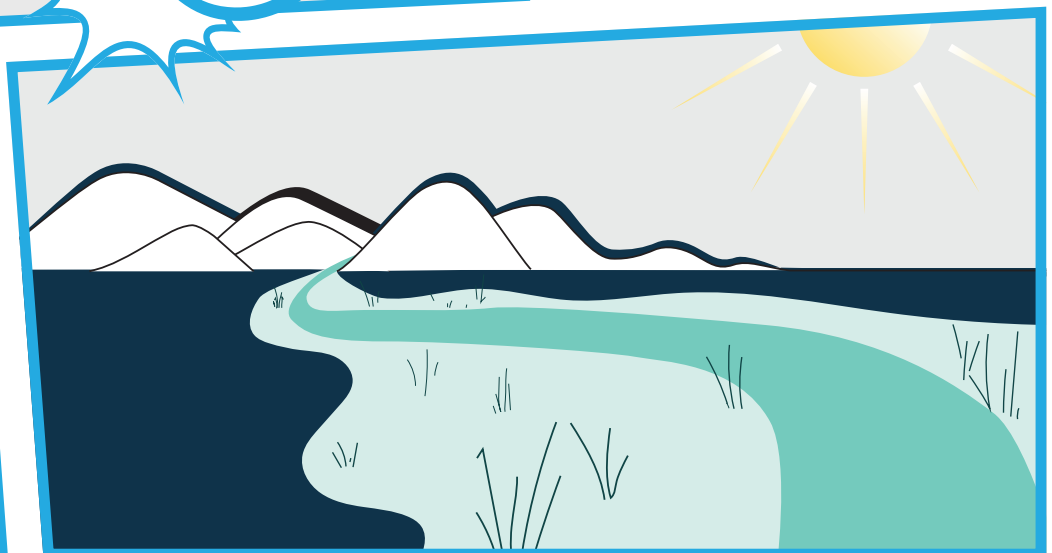
LA COUNTY HAS UPDATED ITS MASTER PLAN FOR THE LOS ANGELES RIVER! COUNTY OFFICIALS WORKED WITH COMMUNITY MEMBERS AND DESIGNERS LIKE LANDSCAPE ARCHITECTS, ARCHITECTS, AND ENGINEERS TO IMAGINE THE LA RIVER OF TOMORROW.

HOW CAN THE LA RIVER CONNECT OUR COMMUNITIES, PROVIDE SPACES FOR PLAY, SUPPORT ECOSYSTEMS, AND PREVENT FLOODING THROUGHOUT THE WATERSHED?

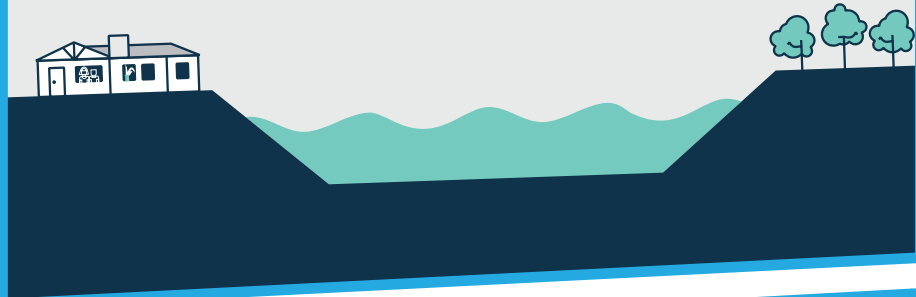


THE MASTER PLAN IS HELPING TO REIMAGINE THE FUTURE OF THE LA RIVER!

LONG AGO, THE LA RIVER WAS A NATURAL WATERWAY THAT CARRIED WATER FROM THE MOUNTAINS TO THE OCEAN. IT FLOODED OFTEN, AND THIS CREATED WETLANDS AND HABITAT FOR PLANTS AND ANIMALS.



AS CITIES DEVELOPED, THE ROLE OF THE LA RIVER CHANGED. IT WAS LINED WITH CONCRETE SO THAT IT COULD QUICKLY MOVE WATER OUT OF OUR COMMUNITIES AND STOP THEM FROM FLOODING.



THE RAINWATER FLOWING OFF OUR ROOFTOPS AND STREETS DRAINS INTO THE LA RIVER, WHICH CARRIES IT TO THE OCEAN.

IT IS IMPORTANT FOR THE RIVER TO KEEP DOING THIS JOB... BUT AS WE CREATE NEW PARKS AND GREENWAYS FOR THE PEOPLE OF LA COUNTY, WE CAN BE SURE TO SUPPORT PLANT AND ANIMAL LIFE, TOO. THE LA RIVER IS A PLACE THAT CREATURES GREAT AND SMALL CAN CALL THEIR HOME.



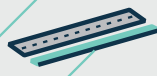
WE CAN ALSO COLLECT MORE WATER BEFORE IT GETS TO THE RIVER BY BUILDING GREEN STREETS, RAIN GARDENS, DAMS, AND CISTERNS THROUGHOUT THE WATERSHED. THIS WON'T SOLVE ALL FLOODING, BUT IT WILL HELP CLEAN THE WATER.



RAIN GARDEN



CISTERN



BIOSWALE



DRYWELL



PERMEABLE PAVEMENT

AS YOU EXPLORE THE PAGES IN THIS BOOK, SHARE WHAT YOU LEARN AND IMAGINE WITH YOUR FAMILY AND FRIENDS.



DESIGN YOUR OWN MURAL!

How does the LA River inspire you? From the time when Indigenous Peoples first lived along the river, the LA River has inspired artistic creations of all kinds. It has provided the material for beautiful woven baskets and has been the setting for famous films. The Master Plan is making sure that the river will continue to be a canvas where communities and individuals express themselves through artworks like murals, installations, and performances. **If you could design this pavilion art wall, how would it look?**



PLAN GOALS

The Master Plan describes nine major goals for the future of the LA River. These goals were developed with the help of community members who expressed what they like about the LA River, as well as what they would want to change. **Can you find words related to the nine Master Plan goals in this word search?**

V W L H O U S I N G D A I W
W S A O O E G E O N R E E U
F E C T N I A C C E S S N C
A D U S E F M O L H N N G K
E U O M A R S W A R T S A S
C C O E A Y Q C F E N H G I
O A Y T V N P U N S A C E R
S T E M R A D C A N B B M D
Y I R D N A V E U L R U E O
S O T E T I I A W L I E N O
T N T I T R D L E E T T T L
E I L P A R K S S E W U Y F
M F N O R E H N N Y R L R R
S W A T E R S U P P L Y Z E

**FLOOD RISK
PARKS
ECOSYSTEMS
ACCESS**

**TRAILS
ARTS
CULTURE
HOUSING**

**EDUCATION
ENGAGEMENT
WATER SUPPLY
WATER QUALITY**



THIS IS AN IMAGINED VIEW OF FERRARO FIELDS, ONE OF THE EXAMPLE PROJECTS INCLUDED IN THE MASTER PLAN. THE AREA WOULD LOOK LIKE A DRY, ROCKY CREEK BED MOST OF THE YEAR. ON VERY WET DAYS, WHEN WATER IN THE LA RIVER RISES, ITS WATER COULD OVERFLOW INTO THE HABITAT AREA, FILLING THE CREEK.



HOW MANY HERONS CAN YOU FIND?



As the Master Plan takes effect, you will start seeing a lot more of the heron, an LA River mascot. A heron icon will appear on new signs throughout the LA River corridor, helping direct you where to go. But keep your eyes peeled... you might see a real heron, too! **Can you find all 11 herons hidden in this image?**

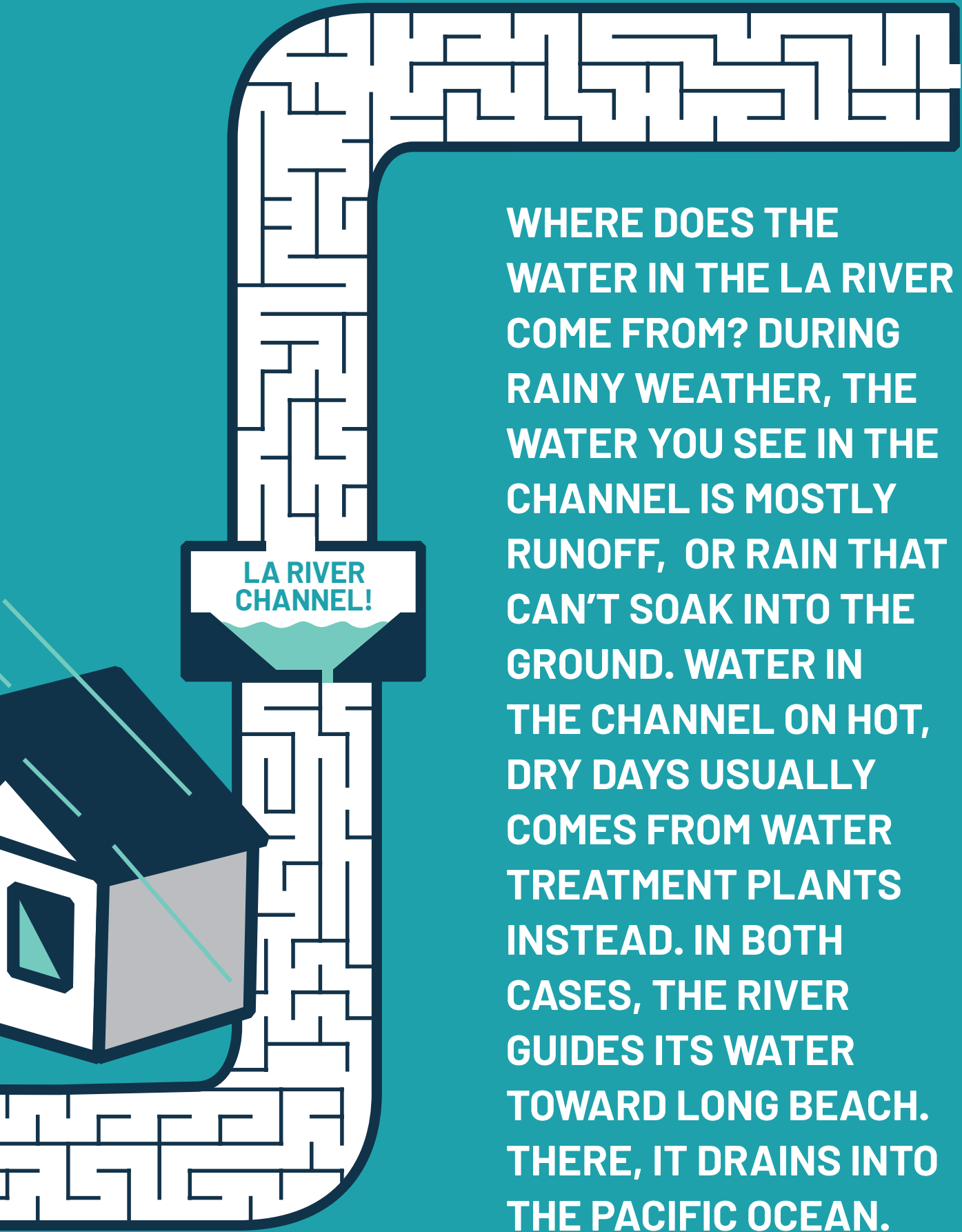
STORMWATER MANAGEMENT



START



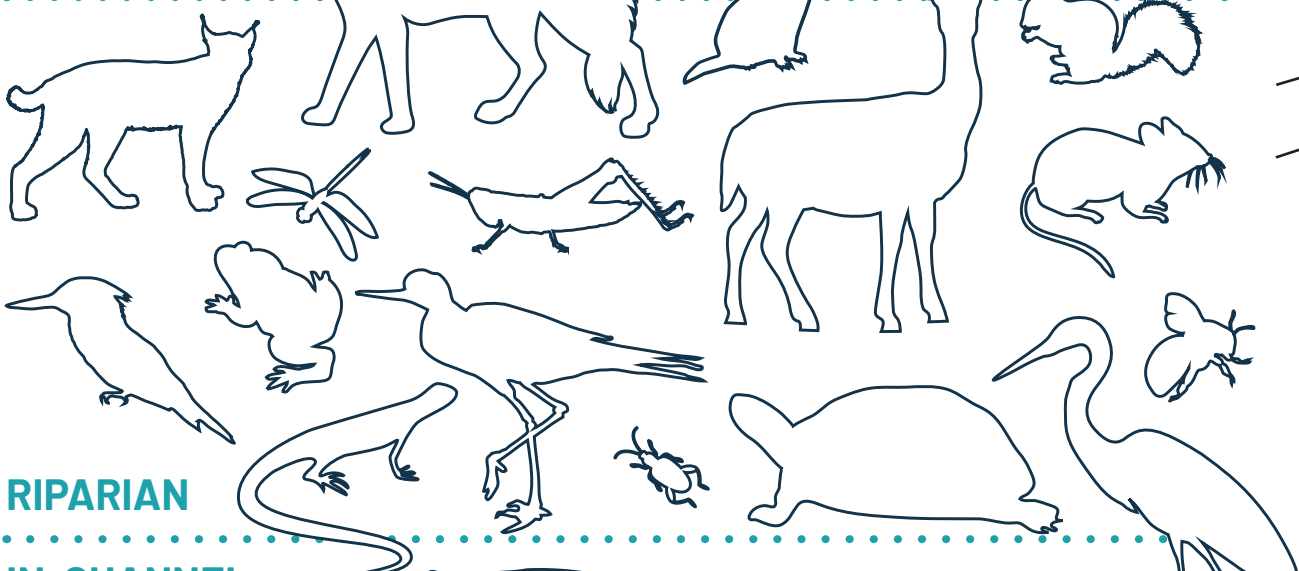
START



WHERE DOES THE WATER IN THE LA RIVER COME FROM? DURING RAINY WEATHER, THE WATER YOU SEE IN THE CHANNEL IS MOSTLY RUNOFF, OR RAIN THAT CAN'T SOAK INTO THE GROUND. WATER IN THE CHANNEL ON HOT, DRY DAYS USUALLY COMES FROM WATER TREATMENT PLANTS INSTEAD. IN BOTH CASES, THE RIVER GUIDES ITS WATER TOWARD LONG BEACH. THERE, IT DRAINS INTO THE PACIFIC OCEAN.



UPLAND



RIPARIAN

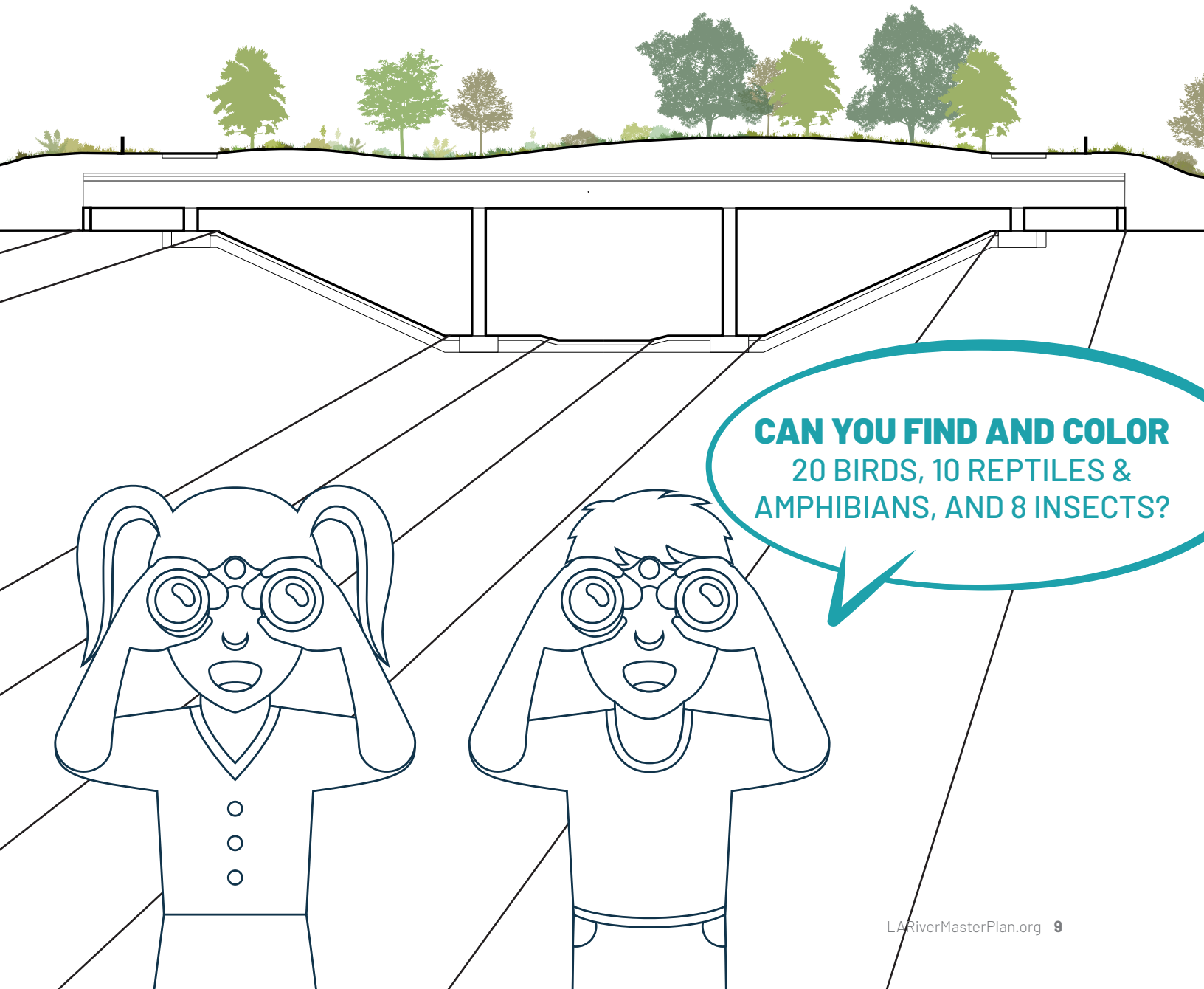


IN-CHANNEL



FAUNA OF THE LA RIVER

All future development along the LA River needs to be sure that it is helping, not hurting, the wildlife that lives in LA County. The river corridor provides important habitat areas for a wide range of flora (plants) and fauna (animals). These range from tiny insects to gliding birds to big mammals like mountain lions. Habitat bridges like the platform below can help them get from one side of the river to the other. **How many of these furry, feathered, scaly, and slimy friends have you seen along the LA River?**



**CAN YOU FIND AND COLOR
20 BIRDS, 10 REPTILES &
AMPHIBIANS, AND 8 INSECTS?**

You can read the full plan in both
English and Spanish and
learn more by visiting
LARiverMasterPlan.org

